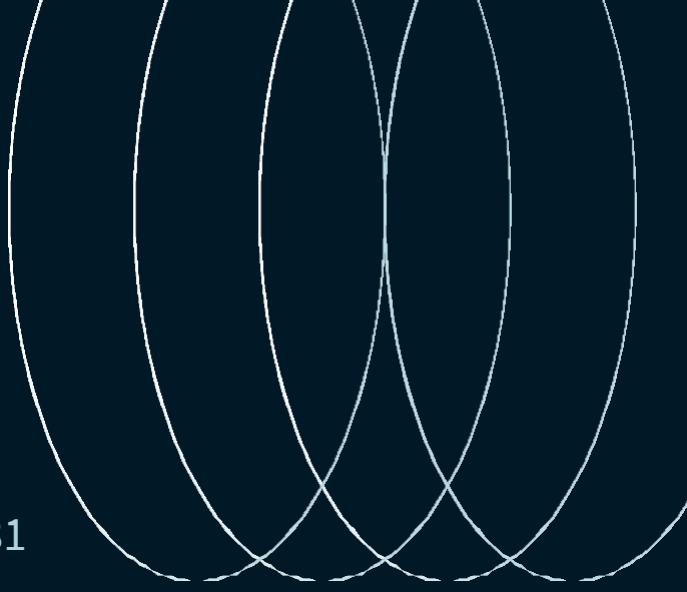
 **JLL** SEE A BRIGHTER WAY

# For lease

The 501 Building  
501 W. Schrock Road, Westerville, OH 43081



# Building overview

Enhance your company image, culture, and productivity at The 501 Building; Westerville’s most prestigious and well known office property in the Schrock Road corridor.

## Property features

- Landmark office building in Westerville
- Located in the heart of the Schrock road corridor
- Corporate headquarters quality construction and design
- Floor-to-ceiling glass throughout provides natural light and unmatched panoramic views
- A perfect building for professional services and tech companies
- Easy access to I-270, I-71, Cleveland Ave. and State Street
- Westerville local amenities just seconds away
- Convenient ten minute drive to Easton or Polaris
- Move-in ready suites
- Flexible lease terms



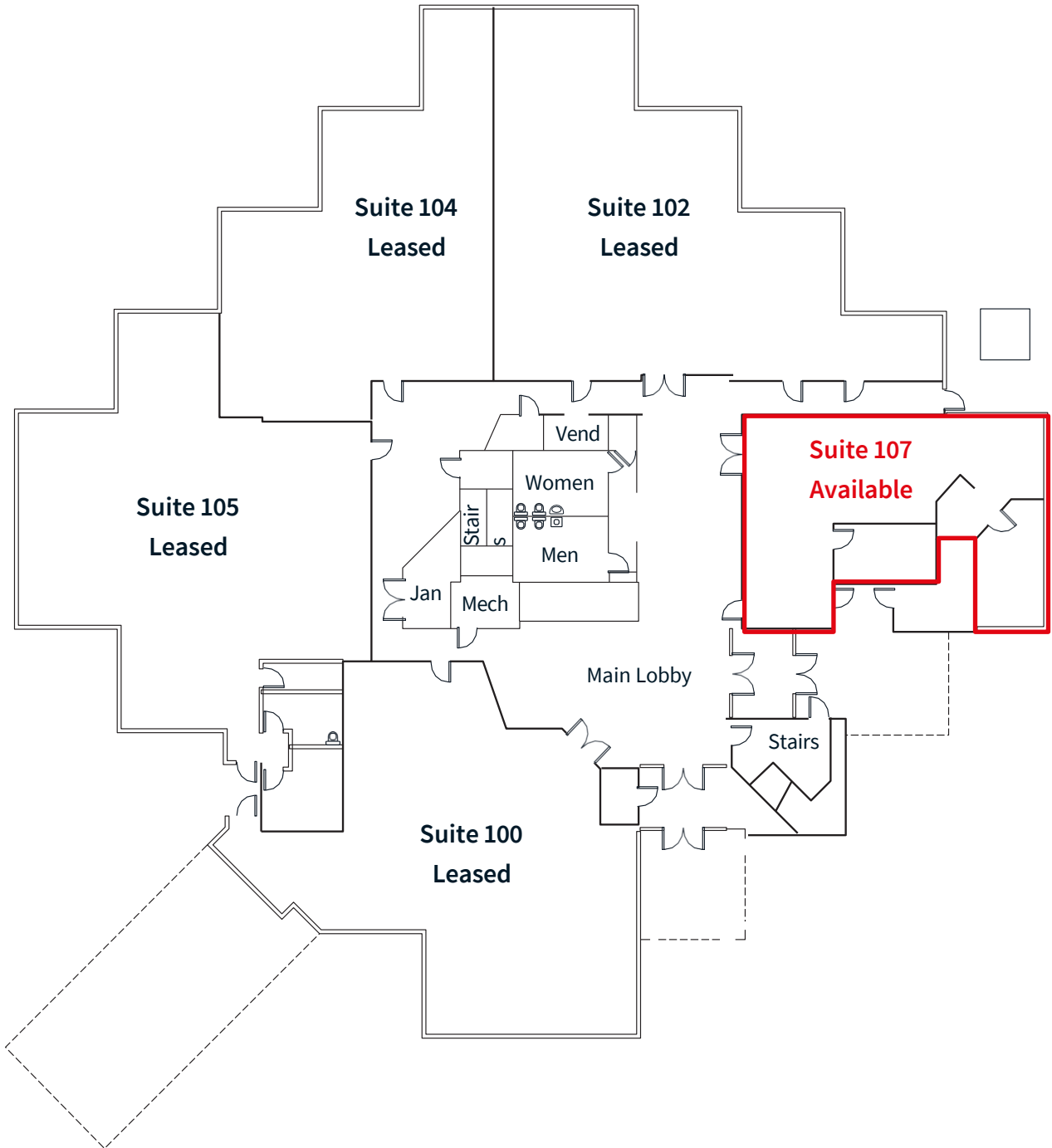
<b>Address</b>	501 W Schrock Rd., Westerville, OH 43081
<b>Building size</b>	60,000 s.f.
<b>Floors</b>	Four (4)
<b>Available for lease</b>	1,569 s.f.
<b>Available for sublease</b>	3,312 s.f.
<b>Parking</b>	270 spaces (4.5/1,000 s.f.)

# Available space

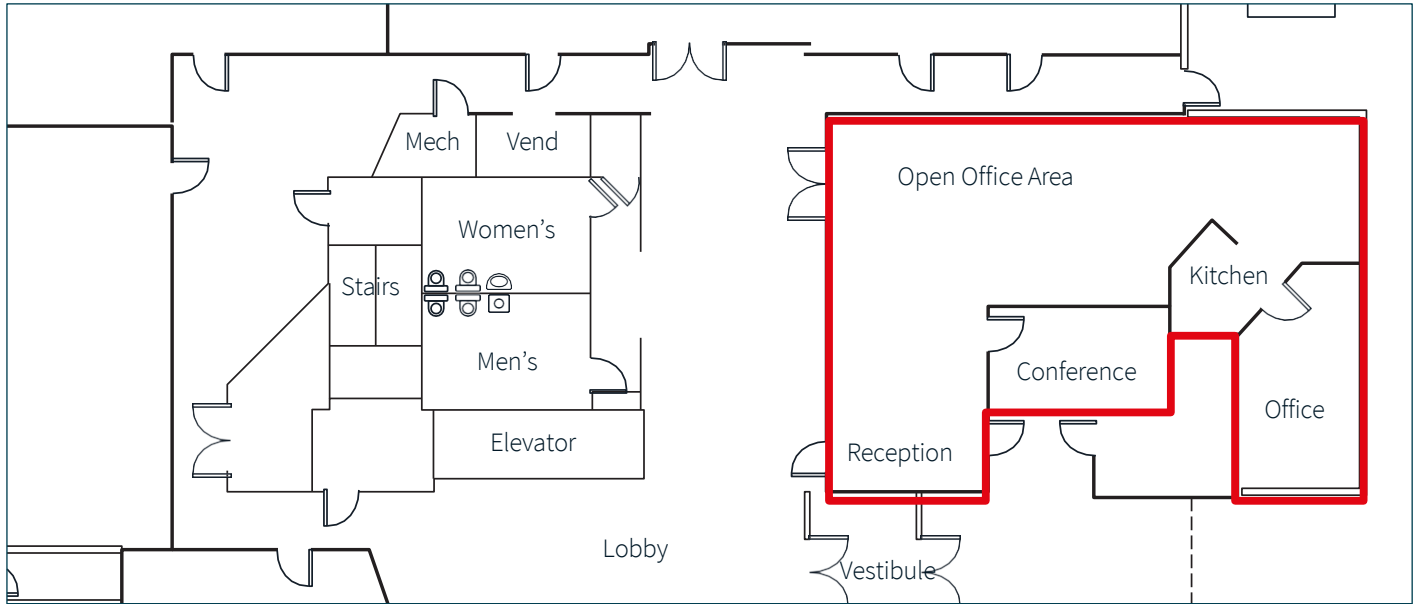
Suite	Lease rate	Lease type	Size (s.f.)	Available
Suite 107	\$12.95/s.f. NNN	Office	1,569	Vacant
Suite 301	\$25.00/sf FSG	Office	3,313	Sublease expires 7/31/2034



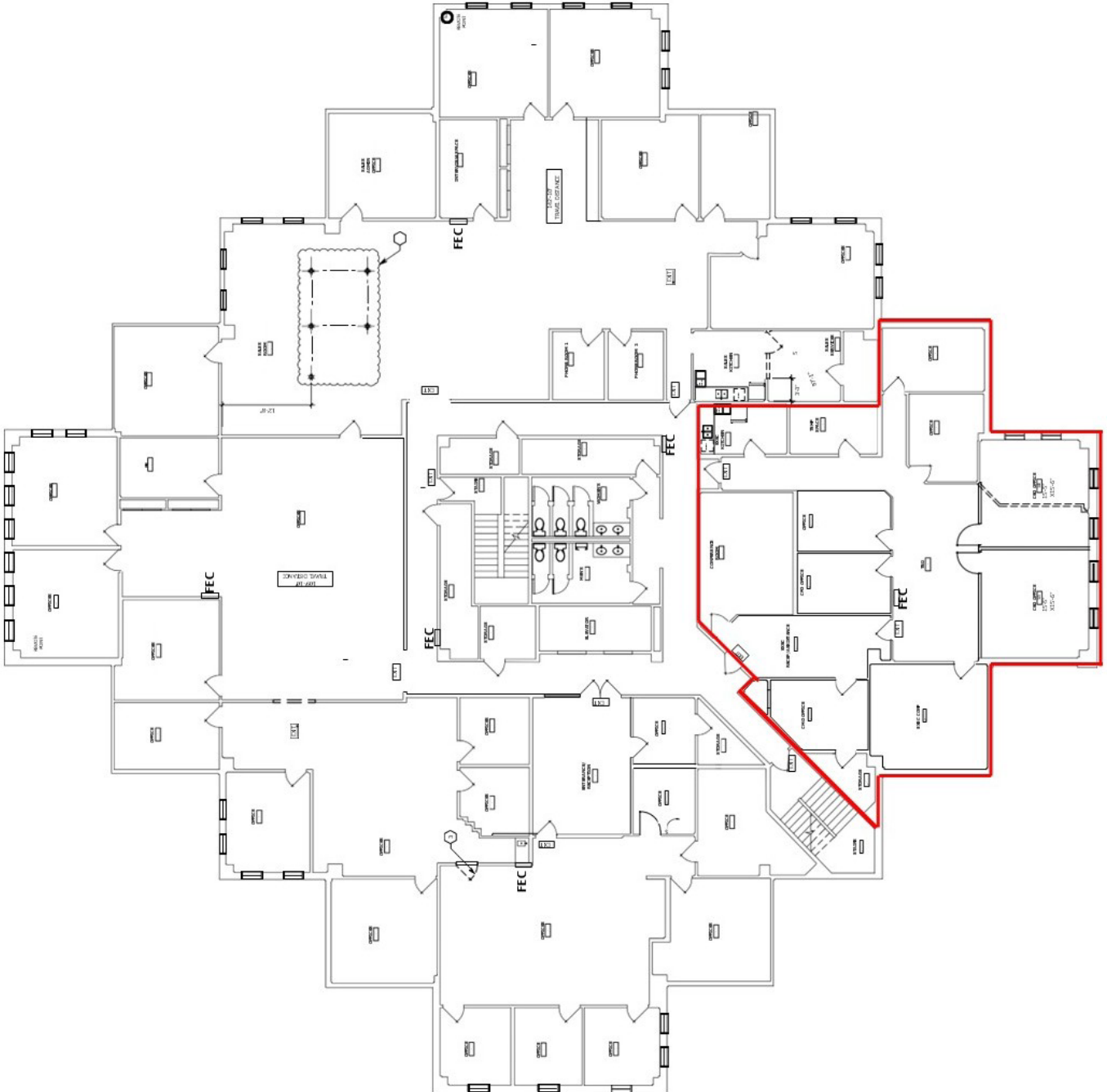
# First Floor Office



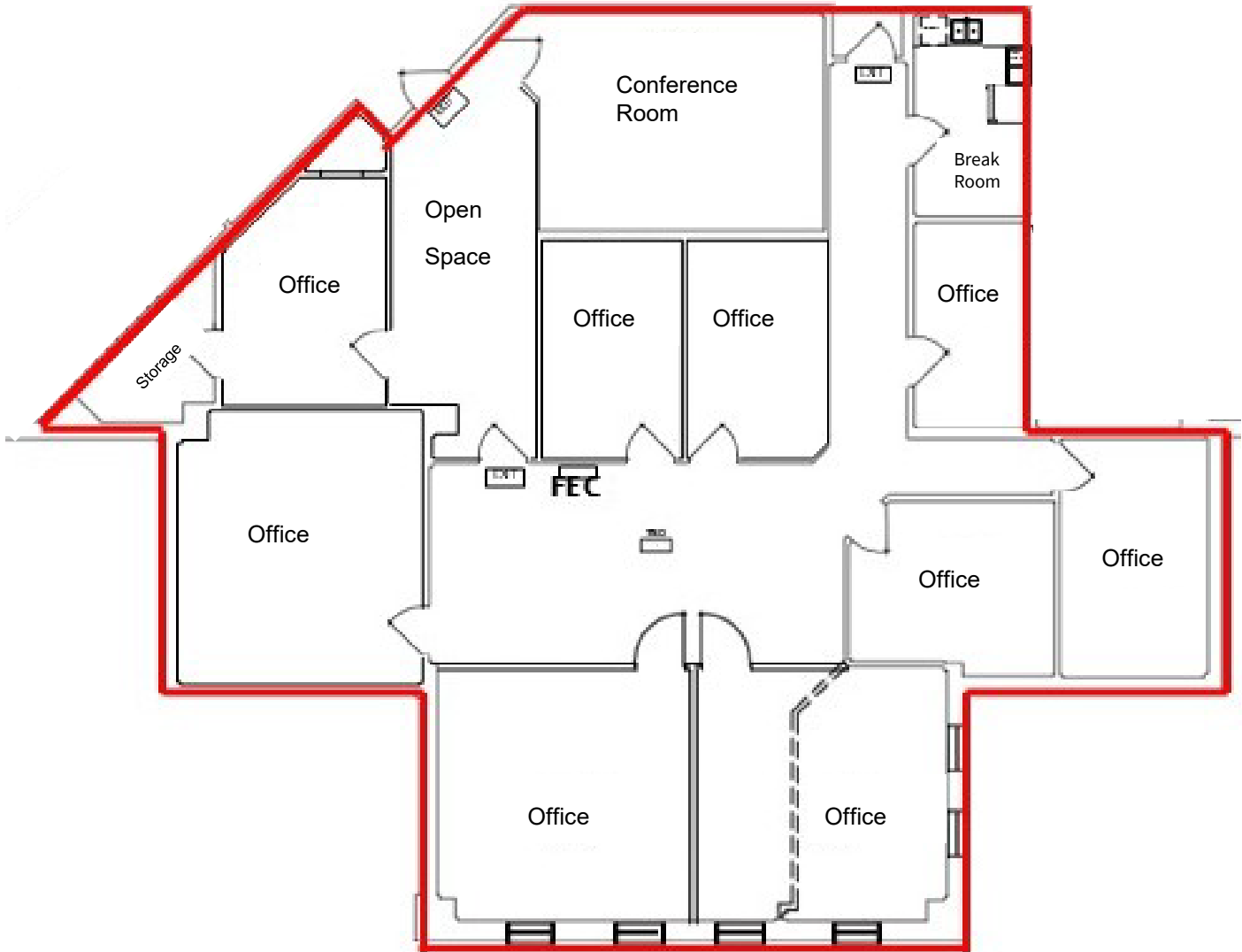
# Suite 107 - 1,569 s.f.



# Third Floor Office



Suite 301 – 3,312 s.f.





**Andrew Dutcher, SIOR**  
[andrew.dutcher@jll.com](mailto:andrew.dutcher@jll.com)  
+1 614 460 4403

**Joey Lamb**  
[joey.lamb@jll.com](mailto:joey.lamb@jll.com)  
+1 614 460 4412