 **JLL** SEE A BRIGHTER WAY

# For sublease

Office Space  
4,257 RSF Available

# Mission City

2355 Northside Drive, San Diego, Suite 100: 4,257 SF

## Highlights:

- Sublease Expires: 5/31/2030
- Asking Rate: \$3.35/SF +U
- \$8K Broker Bonus
- FF&E Available
- Recently renovated
- EV charging stations
- Walkable amenities



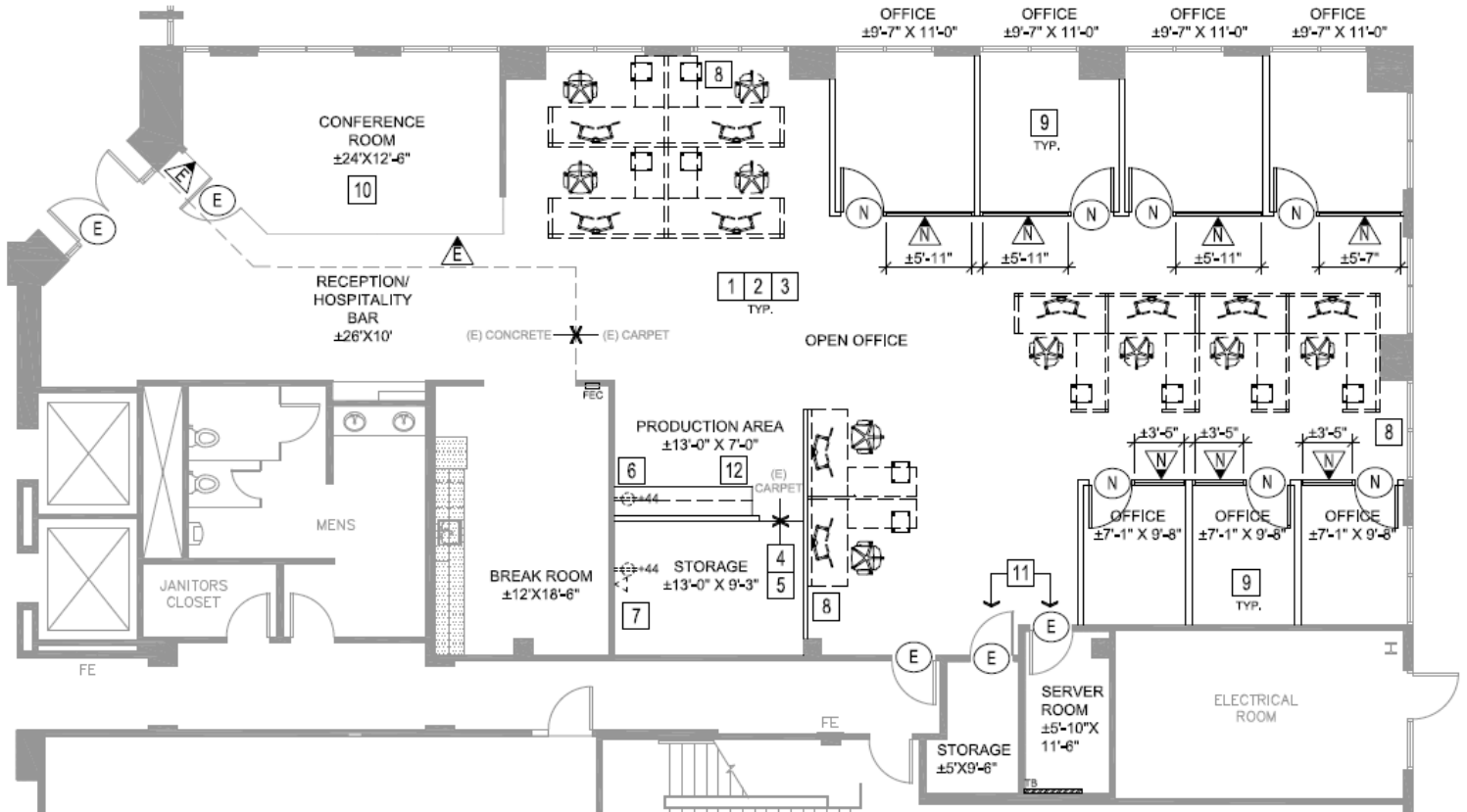
### Nicole Winters

Executive Vice President

Nicole.Winters@jll.com

(858) 410-1231

Mission City  
2355 Northside Drive,  
San Diego, Suite 100



### More Information about this Sublease:

- Class A building
- 15'6 ceiling height
- Floor to ceiling window line
- Plug and play
- One of the nicer suites in all of Mission Valley
- Fitness Center
- Tenant Lounge
- Outdoor recreation areas

**Nicole Winters**

Executive Vice President

Nicole.Winters@jll.com

(858) 410-1231



 **JLL** SEE A BRIGHTER WAY

Jones Lang LaSalle Americas, Inc. License #: 01856260