



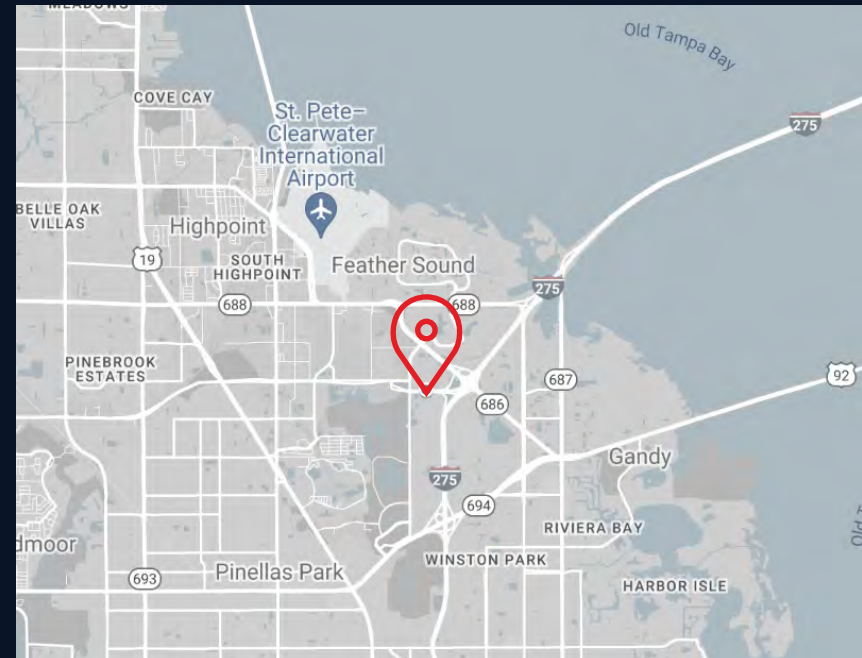
**JLL** SEE A BRIGHTER WAY

# For lease

2510-2520 118th Ave N  
St. Petersburg, FL 33716

## Property Specifications

- Up to 27,750 SF total
- Divisible to 12,500 SF
- Up to 5,566SF of office space
- 2,750 SF additional mezzanine
- Concrete block construction
- 100% air-conditioned
- 2 dock-high doors
- 1 ramp
- Sprinklered



**John C. Dunphy, CCIM, SIOR**  
*Executive Managing Director*  
JohnC.Dunphy@jll.com  
+1 813 387 13122

Jones Lang LaSalle Brokerage, Inc., a licensed real estate broker

Although information has been obtained from sources deemed reliable, neither Owner nor JLL makes any guarantees, warranties or representations, express or implied, as to the completeness or accuracy as to the information contained herein. Any projections, opinions, assumptions or estimates used are for example only. There may be differences between projected and actual results, and those differences may be material. The Property may be withdrawn without notice. Neither Owner nor JLL accepts any liability for any loss or damage suffered by any party resulting from reliance on this information. If the recipient of this information has signed a confidentiality agreement regarding this matter, this information is subject to the terms of that agreement. ©2023. Jones Lang LaSalle IP, Inc. All rights reserved.

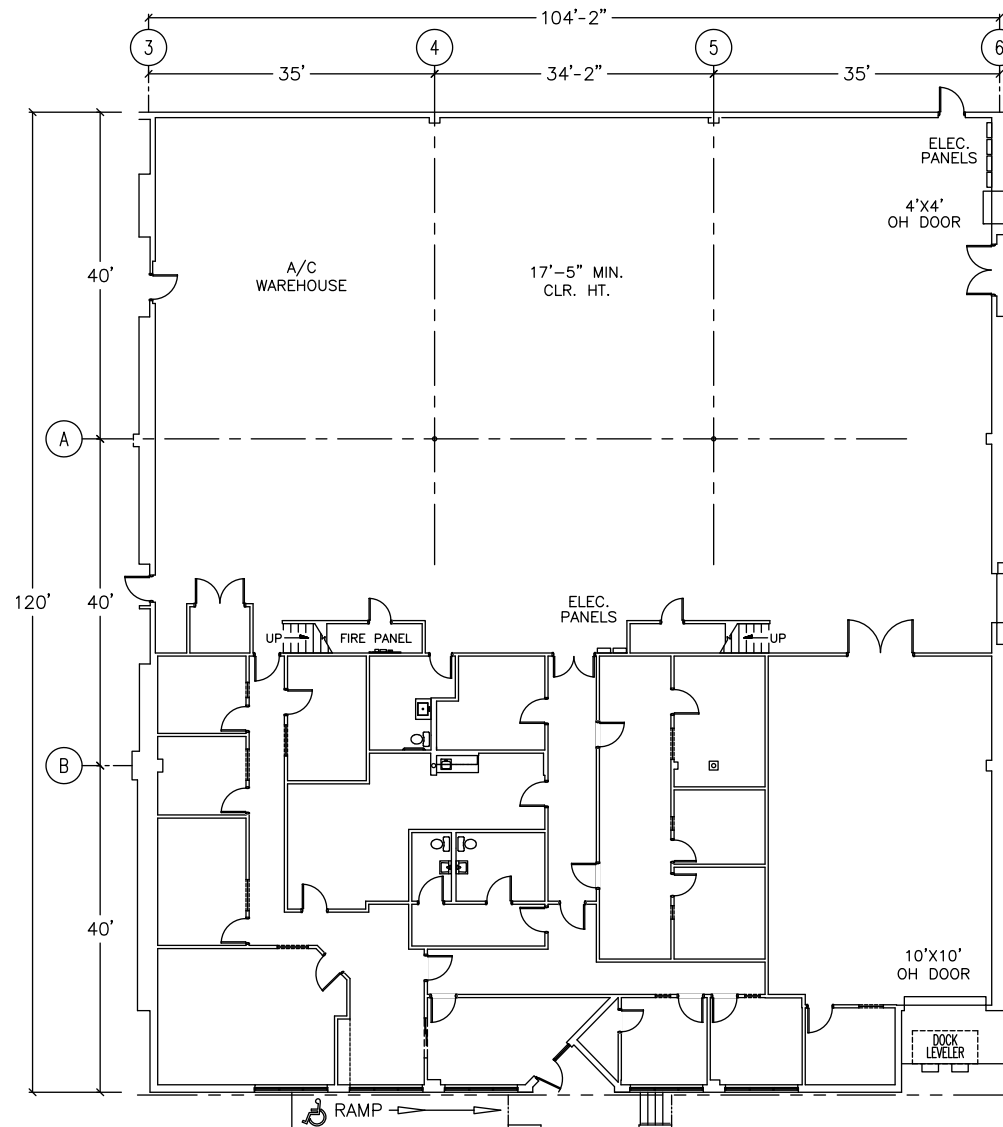
# For lease

2510-2520 118th Ave N, St. Petersburg, FL 33716



## Suite 2510

- 15,250 SF
- 4,940 SF of office space
- 2,750 SF additional mezzanine with 656 SF office
- Concrete block construction
- 100% air-conditioned
- 1 dock-high door
- Two office restrooms and one warehouse restroom
- Sprinklered



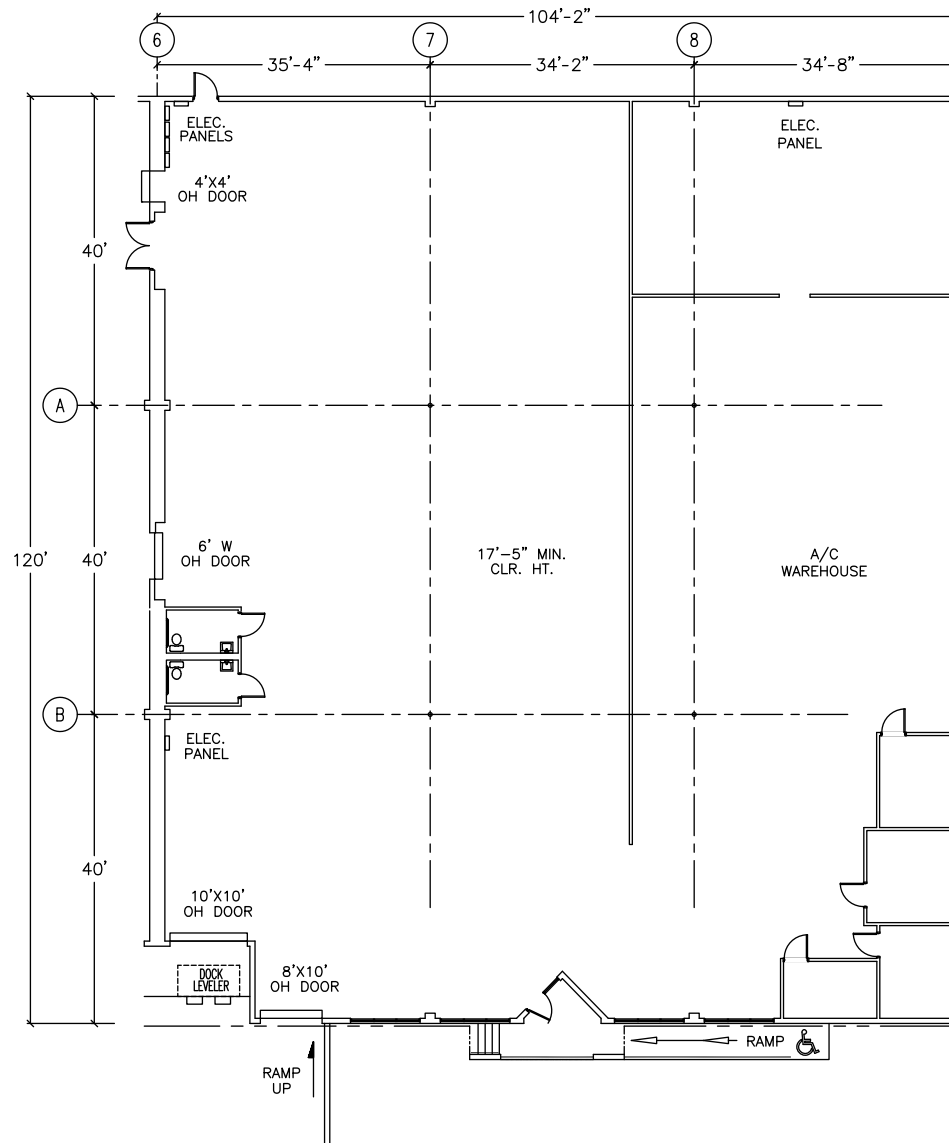
# For lease

2510-2520 118th Ave N, St. Petersburg, FL 33716



## Suite 2520

- 12,500 SF
- 626 SF of office space
- Concrete block construction
- 100% air-conditioned
- 1 dock-high door
- 1 ramp
- Office restroom and two warehouse restrooms
- Sprinklered



# For lease

2510-2520 118th Ave N, St. Petersburg, FL 33716



## Suite 2510 - 2520

- 27,750 SF total
- Divisible to 12,500 SF
- Up to 5,566 SF of office space
- 2,750 SF additional mezzanine with 656 SF office
- Concrete block construction
- 100% air-conditioned
- 2 dock-high doors
- 1 ramp
- Sprinklered

