

# 1644 PLATTE ST

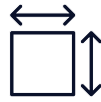
15,423 SF FOR LEASE



# PROPERTY OVERVIEW



4 Stories  
90,041 SF



15,423 RSF  
Available



Modern Fitness Center



Prime Platte Street location

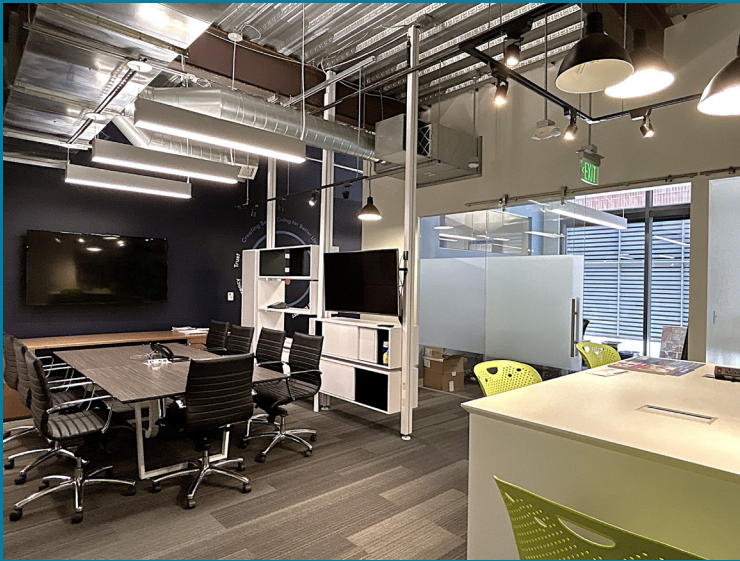


In close proximity to  
LoDo and LoHi

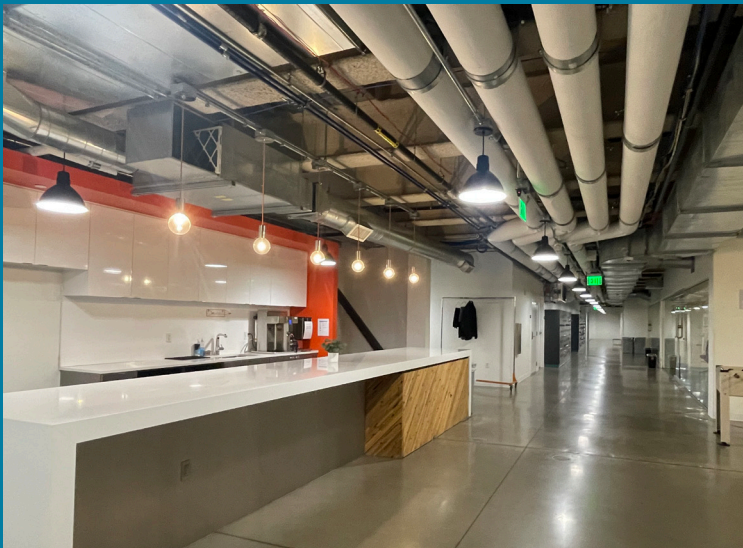


Easy Access to I-25

## SUITE 120 | 2,776 RSF



## LOWER LEVEL | 12,647 RSF



# WELCOME TO PLATTE STREET

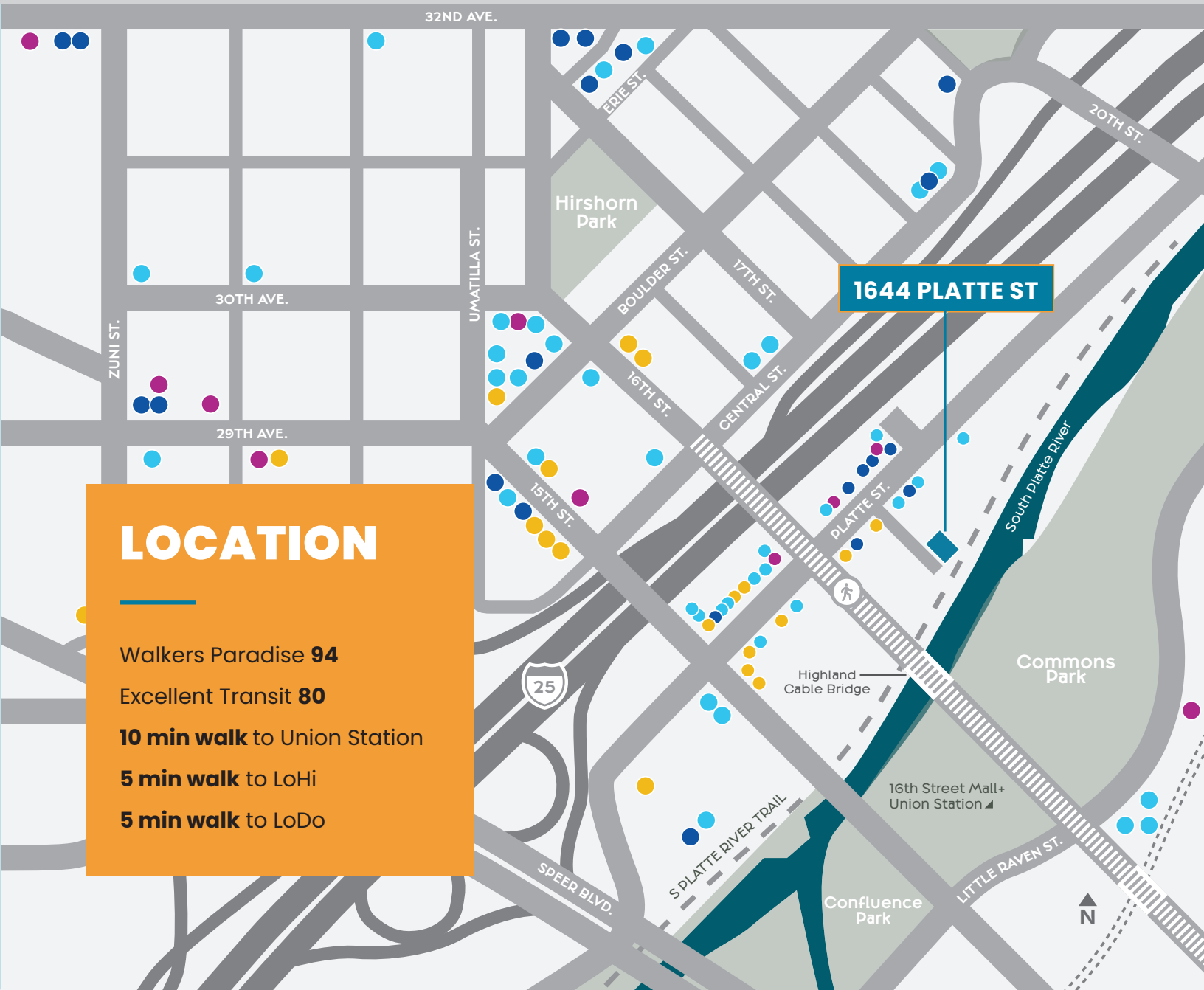


FOOD

RETAIL

DRINK

FITNESS



1644 PLATTE ST

## LOCATION

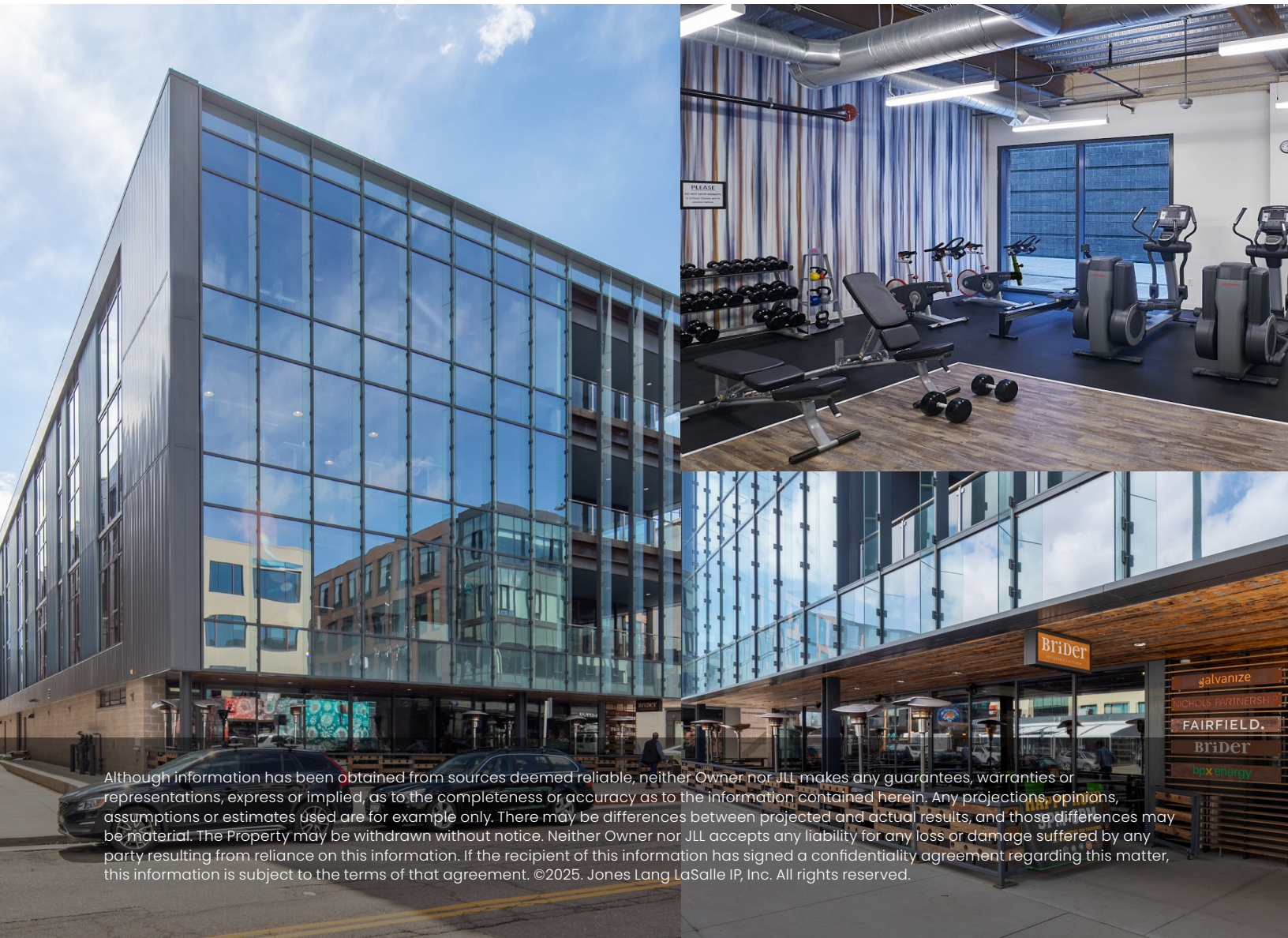
Walkers Paradise **94**  
Excellent Transit **80**  
**10 min walk** to Union Station  
**5 min walk** to LoHi  
**5 min walk** to LoDo

# 1644 PLATTE ST

## FOR LEASING INFORMATION

**James Roupp**  
+1 303 217 7947  
james.roupp@jll.com

**Jonathan Shirazi**  
+1 303 217 7968  
jonathan.shirazi@jll.com



Although information has been obtained from sources deemed reliable, neither Owner nor JLL makes any guarantees, warranties or representations, express or implied, as to the completeness or accuracy as to the information contained herein. Any projections, opinions, assumptions or estimates used are for example only. There may be differences between projected and actual results, and those differences may be material. The Property may be withdrawn without notice. Neither Owner nor JLL accepts any liability for any loss or damage suffered by any party resulting from reliance on this information. If the recipient of this information has signed a confidentiality agreement regarding this matter, this information is subject to the terms of that agreement. ©2025. Jones Lang LaSalle IP, Inc. All rights reserved.