



For lease

Interstate 4 Logistix Hub
8401 SR-33, Lakeland, FL 33809

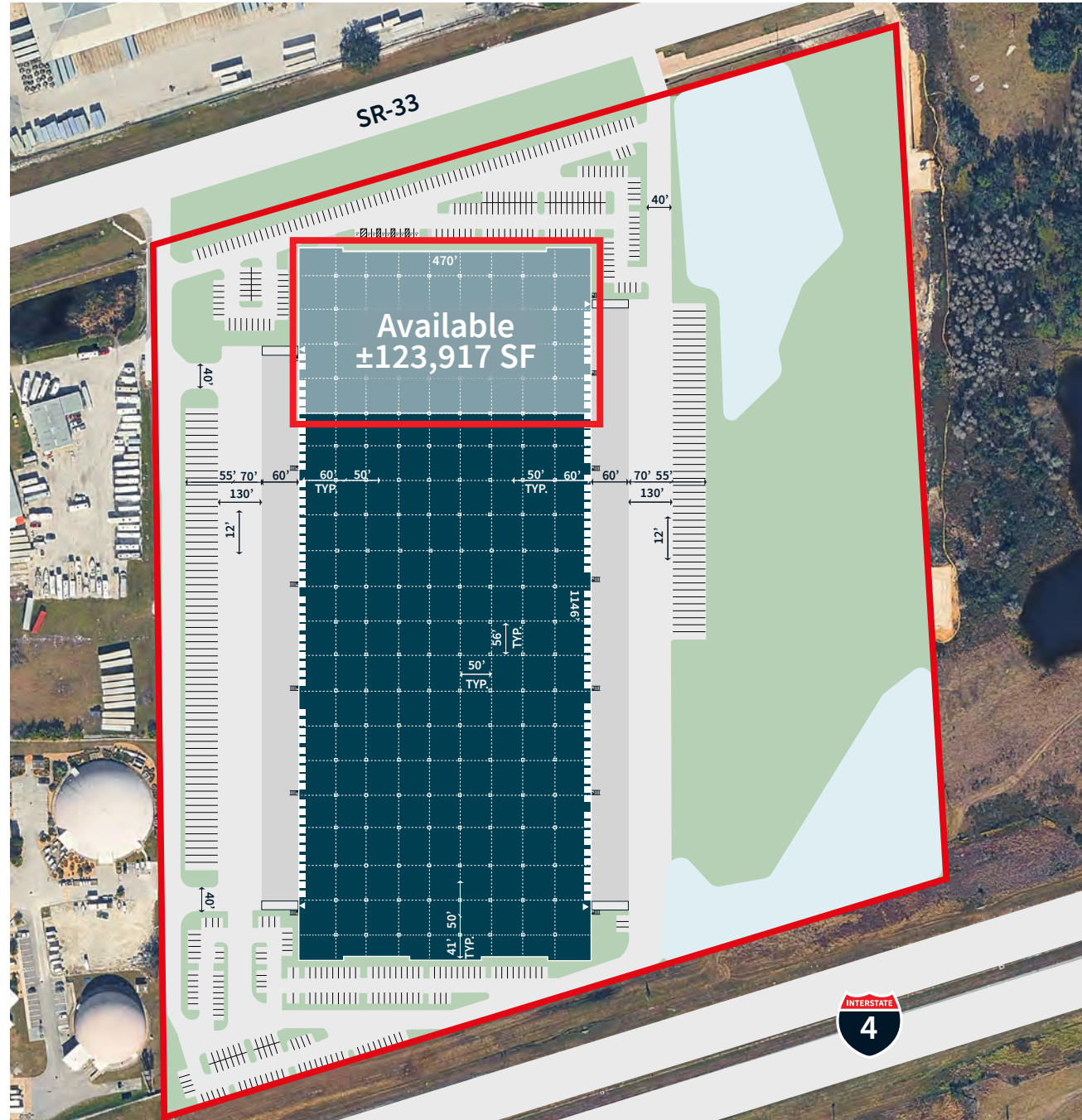
±123,917 SF of industrial warehouse space



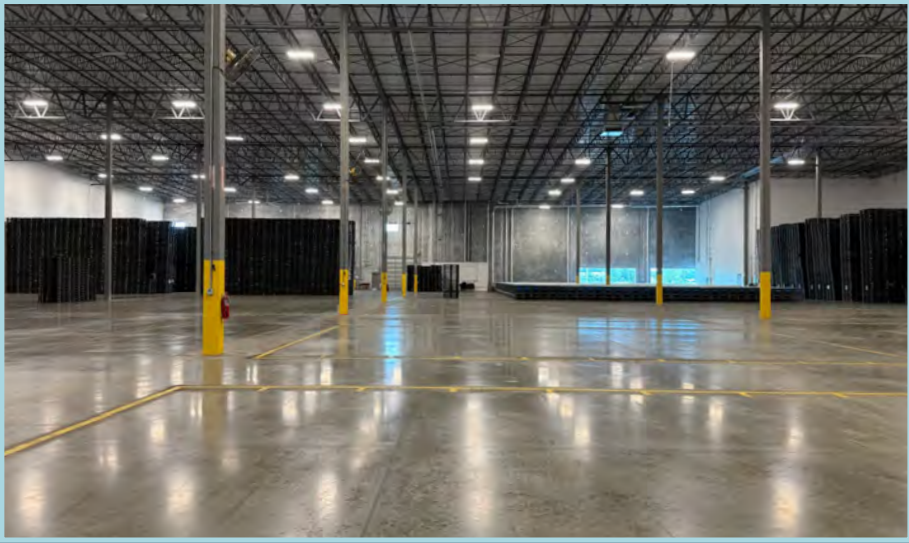
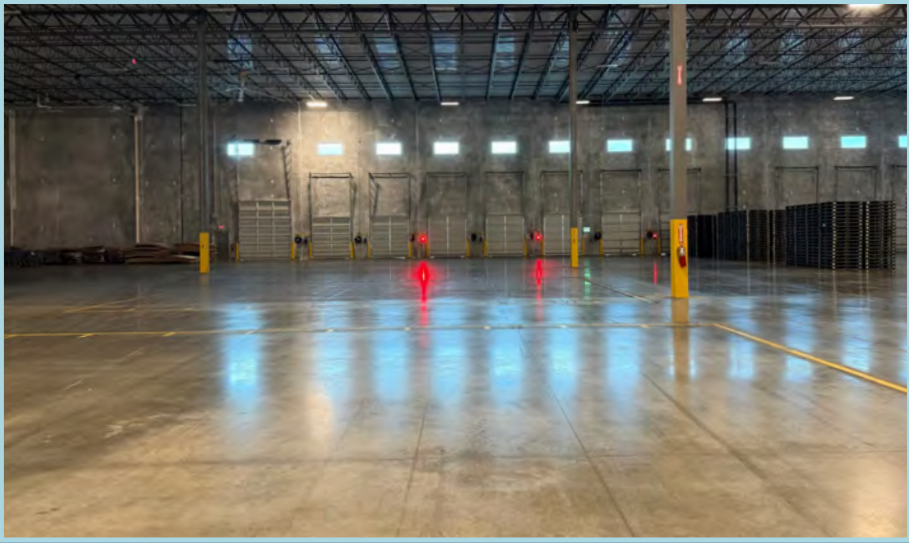
Availability highlights

Building size:	±537,354 SF
Available size:	±123,917 SF
Available:	60 days
Office:	2,729 SF
Year built:	2020
Dock-high doors:	17 (9' x 10')
Drive-in doors:	2 (12' x 14')
Clear height:	36'
Column spacing:	50' x 56'
Speed bays:	60' x 56'
Building dimensions:	± 470' x 1,146'
Floor thickness:	7" Slab (4,000 psi)
Fire protection:	ESFR sprinkler system
Air-condition:	100% A/C warehouse
Fans:	4 HVLS fans
Car parking:	62 exclusive parking spots, 101 shared parking spots
Off dock trailer parking:	22
Truck court depth:	185'
Construction:	Concrete tilt-up
Roof type:	TPO membrane over R-10 rigid insulation
Detention:	On-site

Site plan



Photos

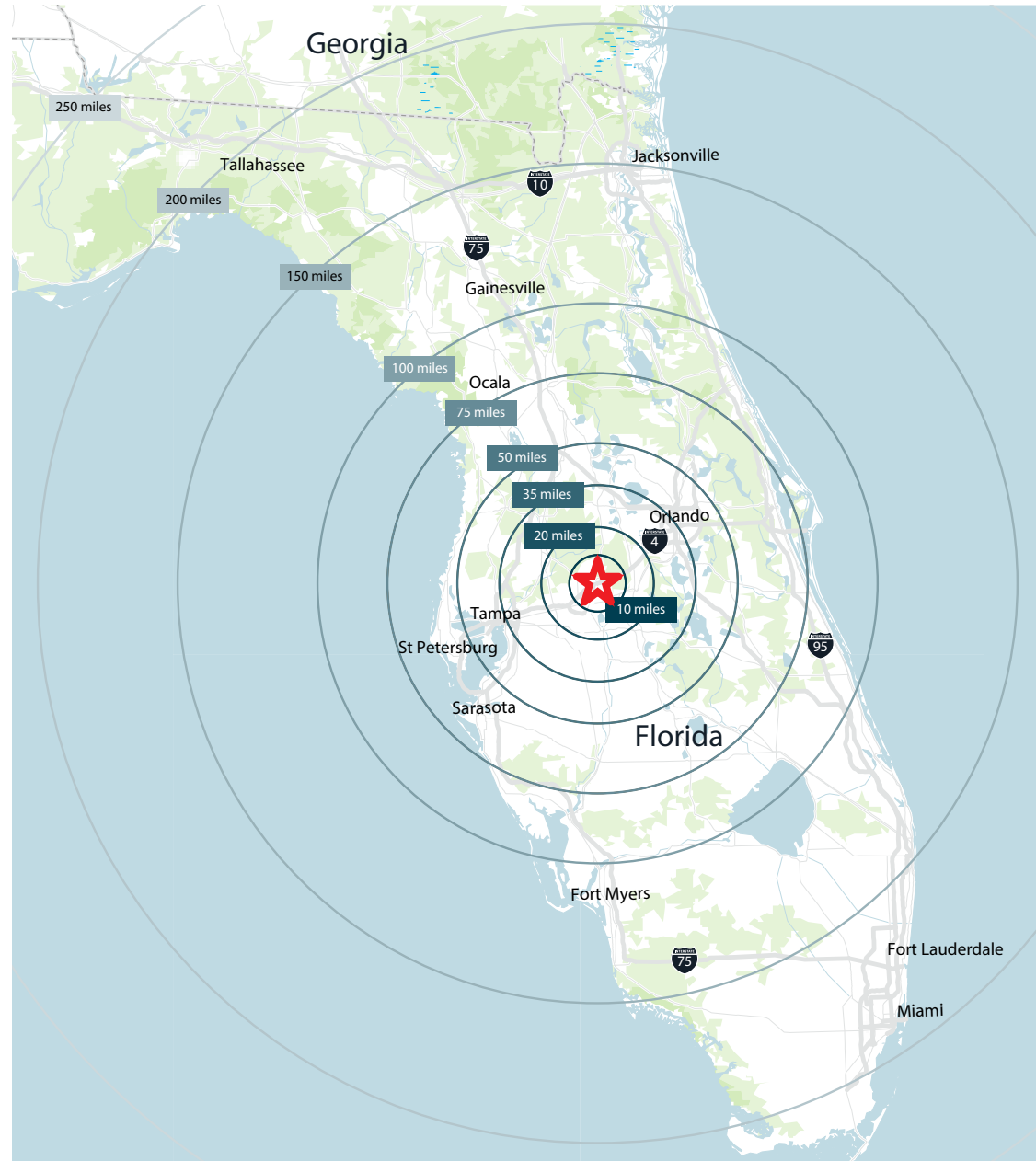


Demographics

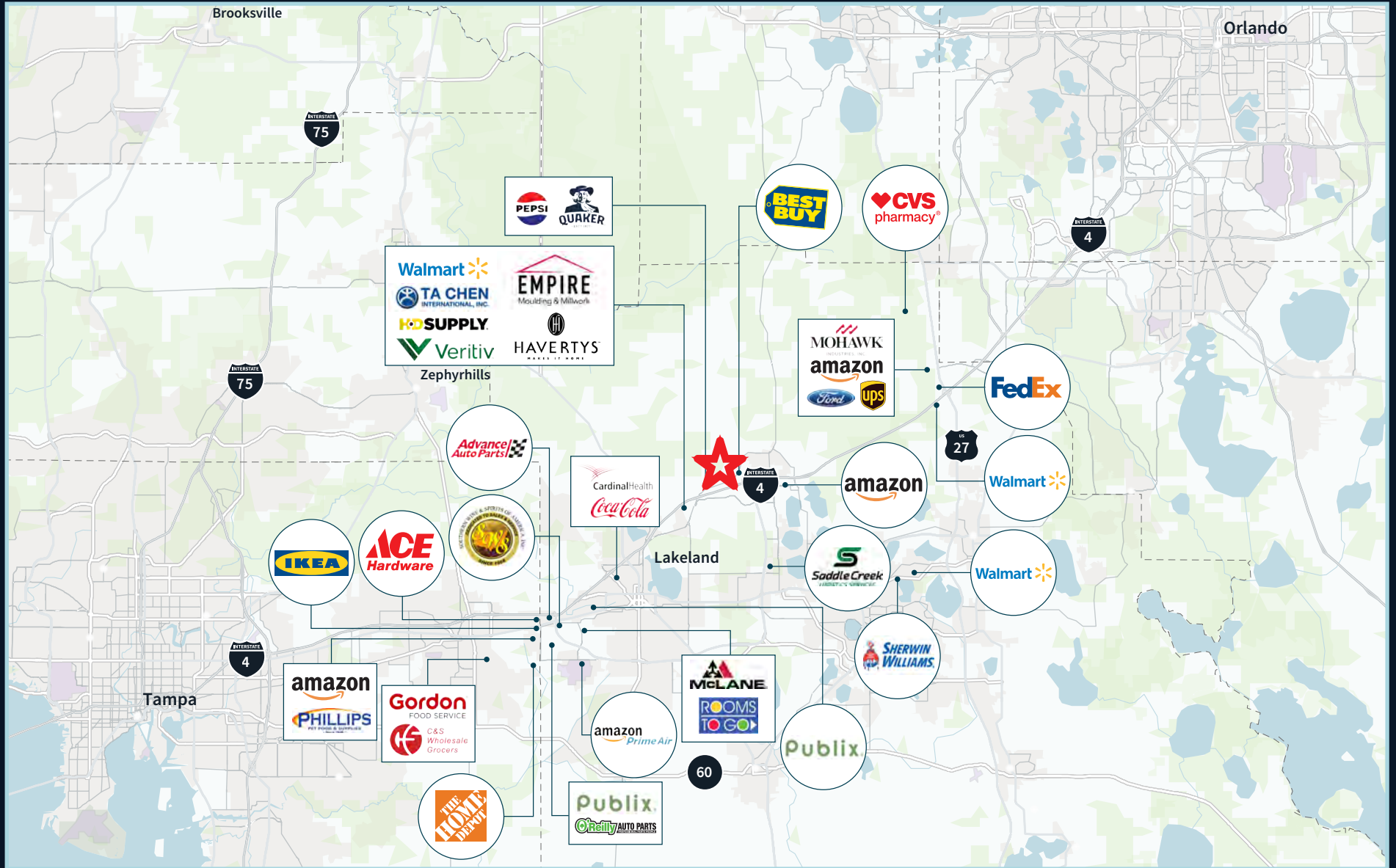
	20 Miles	50 Miles	100 Miles	200 Miles
2025 Total Population	864,308	5,851,195	11,128,660	21,686,193
2030 Total Population	961,879	6,343,071	11,911,656	22,919,835
2025-2030 Annual Growth Rate	2.16%	1.63%	1.37%	1.11%
2025 Employed Population 16+	397,093	2,943,787	5,310,399	10,648,012
2025 Total Households	331,155	2,243,383	4,564,274	8,783,632
2030 Total Households	371,220	2,446,726	4,920,586	9,378,690
2025-2030 Annual Growth Rate	2.31%	1.75%	1.51%	1.32%
2025 Median Household Income	\$73,045	\$83,947	\$81,229	\$83,111
2030 Median Household Income	\$84,528	\$100,082	\$96,301	\$99,450
2025 Average Household Income	\$95,481	\$115,298	\$113,411	\$118,867
2025 Median Age	40.7	40.2	44.5	43.9
2025 Total Businesses	22,458	204,643	408,892	925,570

Key distances:

Orlando	38 miles
Tampa	39 miles
Naples	143 miles
Jacksonville	149 miles
Palm Beach	150 miles
Miami	196 miles
Tallahassee	214 miles



Neighbors





Contact:

John Dunphy CCIM, SIOR

Executive Managing Director

+1 813 387 1312

johnc.dunphy@jll.com

Peter Cecora SIOR

Executive Managing Director

+1 813 387 1297

peter.cecora@jll.com

Cameron Montgomery

Executive Vice President

+1 407 473 4906

cameron.montgomery@jll.com

Although information has been obtained from sources deemed reliable, JLL does not make any guarantees, warranties or representations, express or implied, as to the completeness or accuracy as to the information contained herein. Any projections, opinions, assumptions or estimates used are for example only. There may be differences between projected and actual results, and those differences may be material. JLL does not accept any liability for any loss or damage suffered by any party resulting from reliance on this information. If the recipient of this information has signed a confidentiality agreement with JLL regarding this matter, this information is subject to the terms of that agreement. ©2026 Jones Lang LaSalle Brokerage, Inc. All rights reserved.