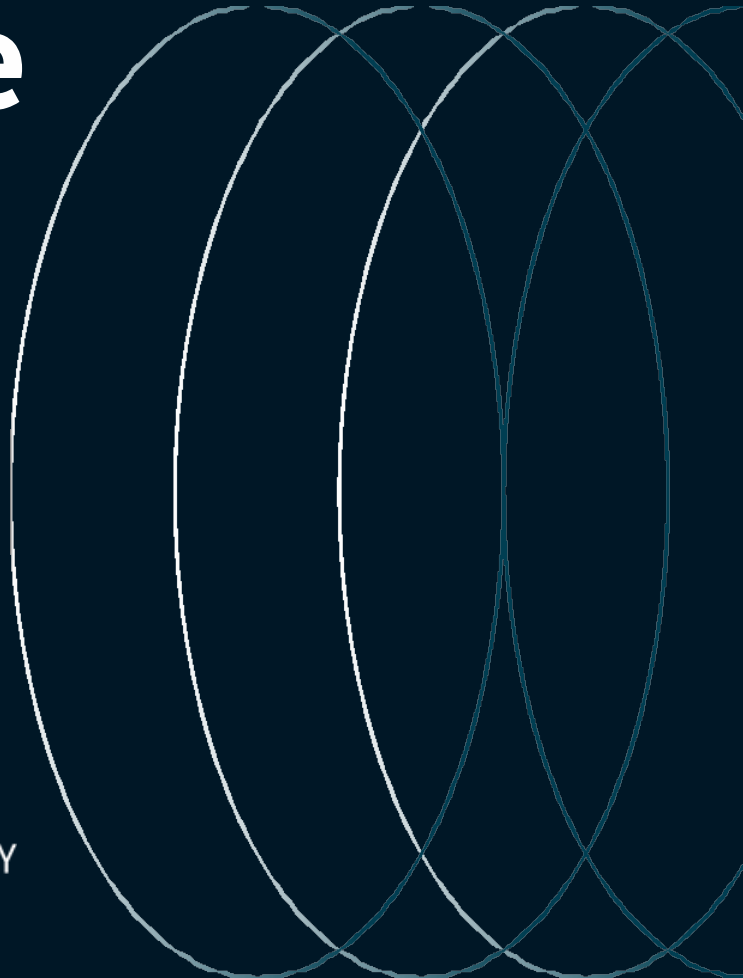


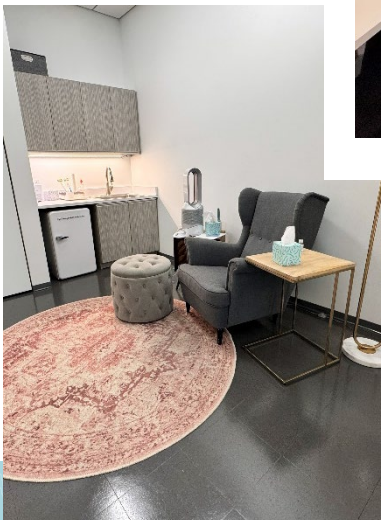
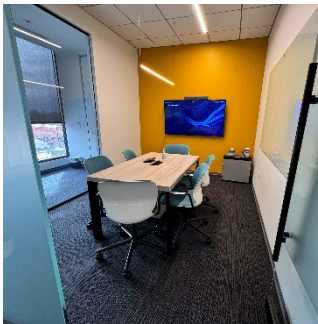
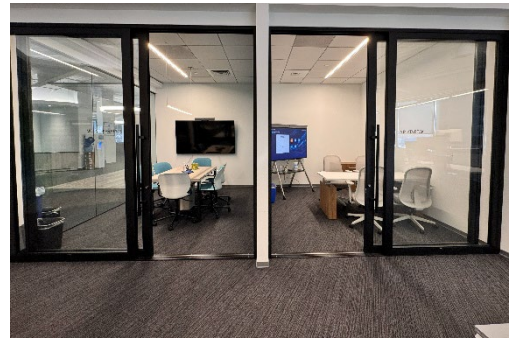
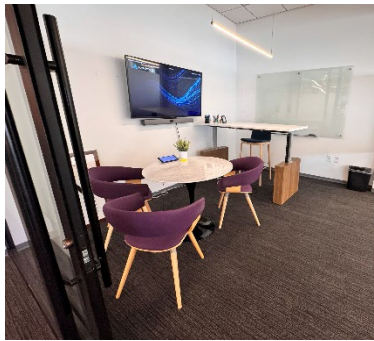
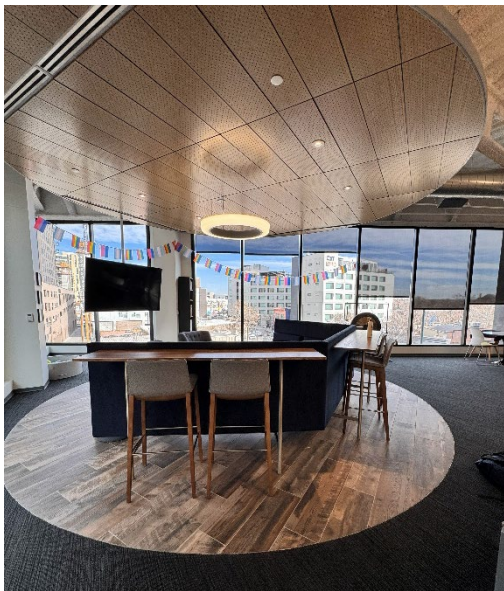
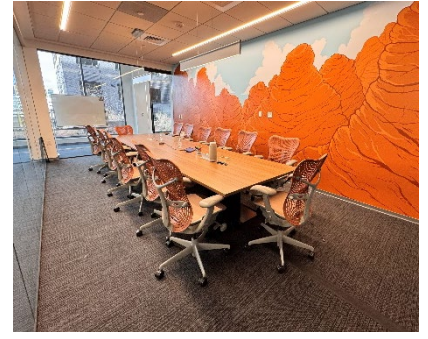
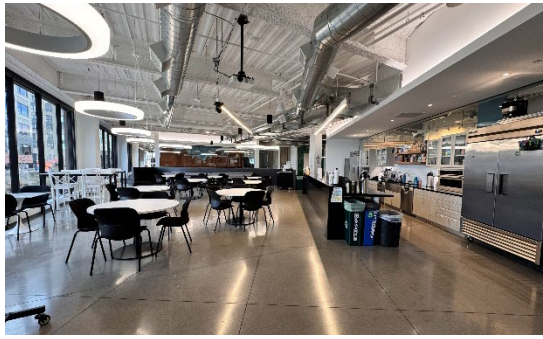
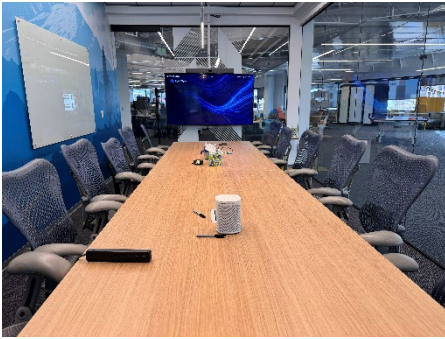
# For sublease

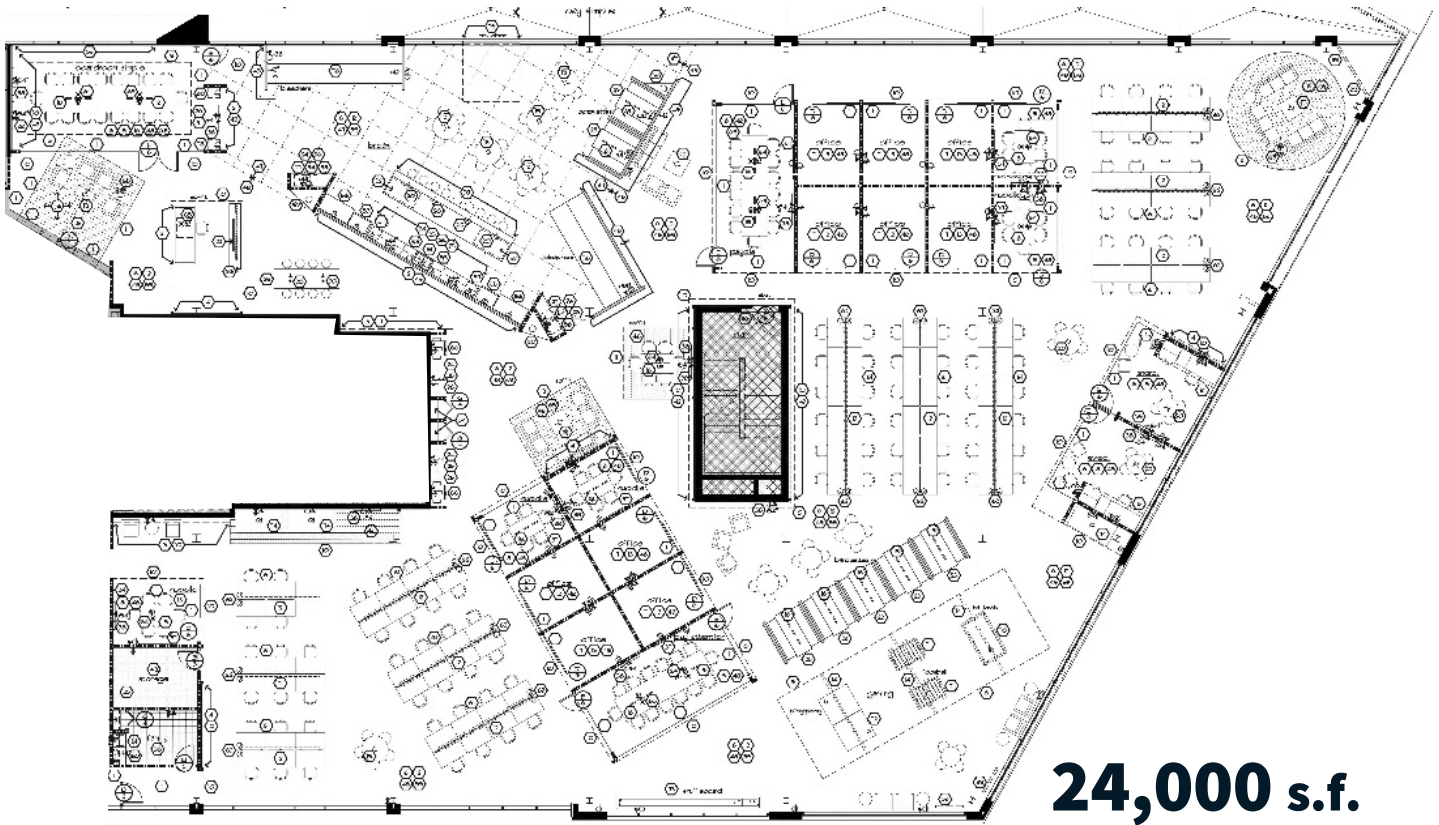
Plug and play space with  
direct access to large  
outdoor terrace!

4th Floor  
24,000 RSF Available

 **JLL** SEE A BRIGHTER WAY







## Space Highlights

Premises: 4<sup>th</sup> Floor - 24,000 s.f.

Rate: Negotiable

Term: Through December 31, 2030

Date Available: October 1, 2026

Parking: 1.25/1,000 RSF

Furniture: *High-end furnishings included!*

## Building Amenities:

- Adjacent to light rail
- Abundant nearby restaurants and retail
- Fitness center, showers, lockers
- Bike facilities
- Flexible common areas
- Garden terrace
- Café and restaurant

JLL

Ken Gooden  
+1 303 246 5202  
Ken.Gooden@am.jll.com

David Shirazi  
+1 303 390 5247  
David.Shirazi@am.jll.com

Tammy Baldwin  
+1 720 418 8027  
Tammy.Baldwin@am.jll.com

[jll.com/denver](http://jll.com/denver)

### DISCLAIMER

Although information has been obtained from sources deemed reliable, Owner, Jones Lang LaSalle, and/or their representatives, brokers or agents make no guarantees as to the accuracy of the information contained herein, and offer the Property without express or implied warranties of any kind. The Property may be withdrawn without notice. If the recipient of this information has signed a confidentiality agreement regarding this matter, this information is subject to the terms of that agreement. ©2017. Jones Lang LaSalle. All rights reserved.