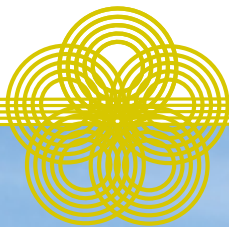


HELLO! FUKUOKA



Kyushu Area Map



Fukuoka Area Map



How to View the Information in this Pamphlet

● Telephone Numbers

The phone numbers listed in this pamphlet can only be used when calling from within Japan. When dialing these numbers via international call, add Japan's country code +81 to the beginning and omit the first 0. For instance, to call an establishment with the phone number 092-123-4567, dial +81-92-123-4567.

● Language Services

Available languages are displayed after each phone number.

- J** Japanese
- K** Korean
- E** English
- C** Chinese

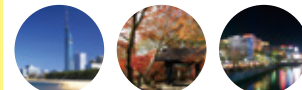
● Other Icons

[MC] Useful map codes on your car navigation system

● Bullet train
To Kagoshima: 2 hr, 10 min.

FUKUOKA Area ▶ P.17

Fukuoka is the largest city in Kyushu and centered around the Tenjin area, which is filled with shopping complexes as well as recreational places.



CHIKUGO Area ▶ P.34

Situated at a distance from the urban center of the prefecture, stunning views can be enjoyed in the Chikugo area. Take a short trip to go see the verdant tea plantations and glittering night sky!

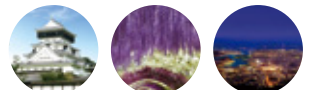


KOKURA

Approx. 70 min.
Approx. 20 min.

KITAKYUSHU Area ▶ P.23

This is a particularly lively region that boasts historically valuable places of interest, dazzling nightscapes, and cultural sites.



CHIKUHO Area ▶ P.29

Main attractions here include magnificent scenes of nature, classical residences, and traditional theaters.





Delicious, Classic Gourmet Dishes of Fukuoka

In Japan, Fukuoka is renowned for its ramen noodles, but there is much more to this prefecture. Here, we introduce excellent staples that you mustn't miss out on eating when you visit.

Selection of
Cuisines
in Fukuoka



Tonkotsu Ramen (Pork Bone Broth Noodles)

とんこつラーメン

Now famous worldwide, ramen is the comfort food of the people of Fukuoka. The combination of opaque soup made from pork bone with thin, firm noodles originated in Fukuoka. *Kaedama*, or an extra helping of noodles, is also unique to this region.

Photo credit: Fukuoka City



Udon

うどん

Thick noodles made of wheat, this Hakata delicacy is enjoyed with *dashi* (Japanese soup stock). Add different toppings such as *gobōten* (burdock root tempura), egg, and meat to find your favorite combination.



Hakata Mizutaki (Chicken Broth Hot Pot)

博多水炊き

The most common way to make this hot pot is with *dashi* (Japanese soup stock) made by boiling kombu kelp, but the Hakata way is to use an opaque soup made from chicken broth.



Yakitori (Skewered Grilled Chicken)

焼き鳥

Bite-sized pieces of chicken on skewers are basted and grilled. Many different parts are available at affordable prices, and it is a popular dish that pairs well with alcohol.

Hakata Wagyu (Hakata Japanese Beef)

博多和牛

This is a branded beef produced by approximately 50 cattle farms in Fukuoka Prefecture. The cattle are raised until around 20 months, and their tender and juicy meat is transformed into delicious dishes at the hands of local chefs.



Motsunabe (Offal Hot Pot)

もつ鍋

This nationally-renowned, local cuisine is a highly nutritious and hearty hot pot made with beef or pork offal (organ meats) and a generous serving of vegetables such as oriental garlic and Chinese cabbage.



Hitokuchi Gyoza (Bite-sized Dumplings)

一口餃子

Small dumplings made with different kinds of dough, filling, and shapes according to each shop. These are best eaten with beer.

Photo credit: Fukuoka City



Kaisen (Seafood)

海鮮

Experience the taste of freshly-caught and -sliced sashimi at the numerous *izakaya* (Japanese pubs) and seafood restaurants.

Photo credit: Fukuoka City

CHECK THIS OUT!



Yamecha (Yame Green Tea)

八女茶

Yame is home to the production of Japanese green tea called *sencha*, including the in-demand *gyokuro* variety, whose volume of production ranks first in Japan. Known for its sweet and rich flavors and strong umami, *gyokuro* from Yame has won the Minister of Agriculture, Forestry and Fisheries Award for 10 consecutive years at the National Tea Competitive Exhibition.

Restaurants

01

Ippudo
【一風堂】
Fukuoka City
[HP] <http://www.ippudo.com/>

02

Samurai.Udon
【侍.うどん】
Fukuoka City
[MAP] P:44 C-3 [MC] 13 290 319*22
[HP] <https://samurai-udon.com/>

03

Toriden
【とり田】
Fukuoka City
[HP] <http://www.toriden.com/>



04

Motsu Nabe Showraku
【もつ鍋笑楽】
Fukuoka City
[HP] <http://www.shoraku.jp/>

05

Yakitori-no-Hachibē
【焼とりの八兵衛】
Fukuoka City
[HP] <http://hachibei.com/>

06

Hōuntei
【宝雲亭】
Fukuoka City
[MAP] P:44 C-2 [MC] 13 319 545*17

07

Horichan Farm
【堀ちゃん牧場】
Fukuoka City
[MAP] P:43 A-2 [MC] 13 273 274*06
[HP] <http://horichanbokujouyou.com/>

08

Nagahama Fish Market
【長浜鮮魚市場】
Fukuoka City
[MAP] P:44 B-2 [MC] 13 371 871*55
[HP] <http://nagahamafish.jp/>

09

Yabeya Konomi Honke
【矢部家 許斐本家】
Yame City
[MAP] P:46 C-2 [MC] 37 142 638*55
[HP] <http://www.konomien.jp/>

Hakata Ikkousha
【博多一幸舎】
Fukuoka City
[HP] <http://www.ikkousha.com/>

Hakata Akachokobe
【博多あかちょこべ】
Fukuoka City
[MAP] P:44 C-2 [MC] 13 319 825*60

Hakata Hanamidori
【博多華味鳥】
Fukuoka City
[HP] <https://www.hanamidori.net/>

Motsunabe Sendou
【もつ鍋仙頭】
Fukuoka City
[MAP] P:44 B-2 [MC] 13 317 230*52
[HP] <http://motsunabe-sendo.com/>

Tenka-no-Yakitori Nobuhide Main Store
【天下の焼鳥 信秀本店】
Fukuoka City
[MAP] P:44 C-2 [MC] 13 349 121*03

Hakata Hitokuchi Gyoza Yaoman
【博多一口餃子 ヤオマン】
Fukuoka City
[MAP] P:44 C-2 [MC] 13 320 166*06
[HP] <http://ishidakikaku.co.jp/>

The Market F Grand Hyatt Fukuoka
【グランドハイアット福岡 レストラン「ザマーケット エフ」】
Fukuoka City
[MAP] P:44 C-2 [MC] 13 319 316*22
[HP] <https://fukuoka.grand.hyatt.com>

Keyaki-Dori Umibare
【けやき通り 海晴れ】
Fukuoka City
[MAP] P:44 B-3 [MC] 13 287 695*82
[HP] <http://www.behappy-obbu.co.jp/>

Kurihara-En Tea Shop
【お茶の栗原園】
Yame City
[MAP] P:44 B-3 [MC] 13 287 635*47



Popular, Local Sake of Fukuoka

Blessed with quality rice, water, and climate, Fukuoka produces many kinds of delicious Japanese sake.

A Selection of
Japanese Sake
Made in Fukuoka

01

Kitaya

[喜多屋]

Each bottle of sake is made with care by brewers, rather resembling a work of art. This brewery won the IWC Champion Sake 2013 trophy.

Kitaya

Yame City [MAP]P.46 C-2
[MC]37 171 076*30
[HP]http://www.kitaya.co.jp/

03

Niwa-no-Uguisu

[庭のうぐいす]

The bottles are labeled with a picture of a charming Japanese nightingale, *uguisu*. It pairs well with any meal, making it hard to resist seconds!

Yamaguchi Sake Brewery

Kurume City [MAP]P.43 B-2
[MC]37 625 752*77
[HP]http://niwanouguisu.com/

02

Mii-no-Kotobuki

[三井の寿]

This skilled brewery has won many awards and even inspired the author of the popular anime *Slam Dunk* to name one of his characters after it.

Mii-no-Kotobuki

Tachiarai Town, Mii District
[MAP]P.43 B-2
[MC]166 721 454*25

04

Kiku Bijin

[菊美人]

This smooth sake uses Yamada Nishiki, a type of rice perfect for sake-making. The sake name on the label was written by the renowned poet Hakushu Kitahara.

Kiku Bijin Sake Brewery

Miyama City [MAP]P.46 B-3
[MC]69 851 467*25
[HP]http://kikubijin.co.jp/



05

Hana-no-Tsuyu

[花の露]

This *junmai-shu* (pure rice sake) has a mild flavor distinct to Fukuoka. It goes well with a wide range of foods and can be served chilled, warm, as well as at room temperature.

Hana-no-Tsuyu

Kurume City
[MAP]P.46 B-2
[MC]37 306 352*22

07

Junmai Ginjo Tani

[純米吟醸 湊]

This brewery has been producing sake since 1699. Tani is light and round and goes down smoothly. Its calm yet enchanting aroma will whet your appetite.

Wakatakeya Sake Brewery

Kurume City [MAP]P.43 B-2
[MC]166 607 806*36
[HP]http://www.wakatakeya.com

06

Hakoiri Musume

[箱入娘]

This name, which refers to a girl brought up with tender care, reflects how this luxurious sake was made using the finest techniques. It is dry and also delicious when served chilled.

Takahashi Shōten

Yame City [MAP]P.46 C-2
[MC]37 142 685*52
[HP]http://www.shigemasu.co.jp/

08

Zanshin

[残心]

Made with Yamada Nishiki rice that does not contain any pesticides or chemical fertilizers. The name is derived from the state of continued awareness that is vital in the Japanese martial art of Kendo. The aftertaste is refreshing.

Hayashi Ryuhei Sake Brewery

Miyako Town, Miyako District
[MAP]P.43 C-2 [MC]36 470 212*63
[HP]http://www.kusugiku.jp/

Where to Buy and Drink Japanese Sake!

BUY

Sumiyoshi Liquor Store, Main Store

[住吉酒販 本店]

This specialized store is patronized by professional chefs! You can find carefully selected sake and foods that are suitable for various occasions.



Fukuoka City [MAP]P.44 C-3
[MC]13 289 770*60
[HP]http://sumiyoshi-sake.jp/

BUY

Tomozoe Main Store

[友添本店]

Sake from all 70 breweries in Fukuoka Prefecture are available here! You can also find rare sake that cannot be found elsewhere in Fukuoka.



Fukuoka City [MAP]P.44 C-2
[MC]13 319 034*11
[HP]http://www.tomozoe-honten.co.jp/

DRINK

Sake Bar Fukkura

[Sake Bar 福蔵]

A special feature of this bar, which only serves local sake from Fukuoka, is the limited-hour offer to taste a total of 30 kinds of sake as much as you want!



Fukuoka City [MAP]P.44 B-2
[MC]13 318 355*63
[HP]http://www.sagakura.com/fukkura

DRINK

Todoroki Liquor Store Yakuin Stand!

[とどろき酒店 薬院stand!]

This is the 2nd store of Todoroki Saketen in Hakata Ward. There is a bar here where you can have a drink while standing.



Fukuoka City [MAP]P.44 B-3
[MC]13 288 008*52
[HP]http://todoroki-saketen.com/

Sake Brewery Visits



Kitaya

[喜多屋]

Awarded the IWC Champion Sake 2013 trophy, this brewery is only open to visitors during the day. The shop guide can speak English!

Yame City ☎ 0943-23-2154 ■
[MAP]P.46 C-2 [MC]37 171 076*30
[HP]http://www.kitaya.co.jp/

•Reservation required



Kobayashi Sake Brewery Main Store

[小林酒造本店]

This long-established brewery is renowned for producing Bandai, one of Fukuoka's major sake. Visits can be arranged for groups of 5 or more people on Mon, Tues, Thurs, and Fri.

Umi Town, Kasuya District ☎ 092-932-0001 ■
[MAP]P.43 B-2 [MC]55 541 151*36
[HP]http://sakebandai.com/

•Reservation required

Events



Annual Event in February! Jojima Sake Brewery's Annual Opening of Sake Barrels!

Kurume City's 7 breweries are open to the public during this event. The main venue is filled with people to taste various kinds of sake! This is the perfect opportunity if you want to try freshly-made, new sake.

Jojima Chōmin-no-Mori Park (Kurume City)
Mid-February each year, held for 2 days
[MAP]P.46 A-2 [MC]37 306 195*63



Onsen Areas Throughout Fukuoka

Various kinds of *onsen* (natural hot springs) can be found all over Fukuoka.

A Selection of
Onsen
in Fukuoka

01

Wakita Onsen

脇田温泉

This hot spring is located between the cities of Fukuoka and Kitakyushu. Known as a "hot water for beautiful skin," it is characterized by its milky-textured, soft water.

Miyawaka City



The beautiful, scenic nature is also a must-see



Built along the bank of Inunaki River in the quiet mountains, bathers can enjoy cherry blossoms in the spring, fireflies in the summer, colorful foliage in the autumn, and snow in the winter.

02

Harazuru Onsen

原鶴温泉

This is one of the largest hot spring areas in Fukuoka Prefecture. There are 2 types of water that each brightens the skin and washes off old sebum. It is a popular bathing destination due to these beautifying effects.

Asakura City



A landscape that kindles nostalgia among the Japanese



In this area, you can find the Asakura Triple Water Wheels, which were constructed more than 200 years ago, as well as the Minou Mountain Range. Also nearby is Akizuki District, which is known as the Little Kyoto of Chikuzen.

[Other Onsen Areas in Fukuoka Prefecture]

03

Hakata Onsen

博多温泉

Accessible by train from Tenjin, which is the center of Fukuoka City, this salt spring is known to be beneficial for beautiful skin.

Fukuoka City

04

Futsukaichi Onsen

二日市温泉

This is one of the oldest springs in Fukuoka Prefecture. It is located near Dazaifu Tenmangu Shrine and easily reached by train or bus from Tenjin.

Chikushino City

05

Funagoya Onsen

船小屋温泉

This spring boasts Japan's carbonic acid. Carbonated springs are a rarity, as they only constitute 0.5% of all springs across the country.

Chikugo City

06

Chikugogawa Onsen

筑後川温泉

The milky texture of the water of this spring is well-noted to be beneficial for beautiful skin. Also available at this establishment are *rotenburo* (outdoor baths) with views of the nearby Chikugo River as well as delicious cuisine.

Ukiha City

Recommended Onsen Facilities (Reservation Required)

01

Nansuikaku

[補水園]
Miyawaka City
☎ 0949-54-0123
[MAP]P.43 B-2 [MC]168 070 656*17
[HP]http://www.nansuikaku.com/

02

Hodoai-no-Yado Roppokan

[ほどあいの宿 六峰館]
Asakura City
☎ 0946-62-1047
[MAP]P.43 B-2 [MC]166 648 659*63
[HP]http://www.roppo.jp/

Taisenkaku

[泰泉閣]
Asakura City
☎ 0946-62-1140
[MAP]P.43 B-2 [MC]166 678 082*88
[HP]http://www.taisenkaku.co.jp/

Hotel Parens Onoya

[ホテル パレンス 小野屋]
Asakura City
☎ 0946-62-1120
[MAP]P.43 B-2 [MC]166 649 690*30
[HP]http://www.parens.jp/

Yagurumaso

[やぐるま荘]
Asakura City
☎ 0946-62-0700
[MAP]P.43 B-2 [MC]166 649 726*74
[HP]http://yaguruma.jp/

03

Fujiinon

[富士の苑]
Fukuoka City
☎ 0120-4126-57
[MAP]P.43 B-2 [MC]13 172 393*74
[HP]http://www.fujiinon.co.jp/

04

Ivy Hotel Chikushino

[アイビーホテル筑紫野]
Chikushino City
☎ 092-920-2130
[MAP]P.43 B-2 [MC]55 242 511*41
[HP]http://www.ivyhotel.net/

05

Hotel Higuchiken

[ホテル樋口軒]
Chikugo City ☎ 0942-52-2101
[MAP]P.43 C-2 [MC]37 045 507*82
[HP]http://www.higuchiken.co.jp/

Funagoya Onsen River Station Koibotaru Bathing Facility

[川の駅船小屋 恋ほたる温泉館]
Chikugo City ☎ 0942-52-8866
[MAP]P.46 B-2 [MC]37 045 529*14
[HP]http://koibotaru.com/ (No reservation required)

06

Nijinoyado Hotel Hanageshiki - Renowned Onsen in Kyushu

[九州の名物温泉 虹の宿ホテル 花景色]
Ukiha City ☎ 0943-77-2110
[MAP]P.43 B-2 [MC]166 682 669*44
[HP]http://www.hanageshiki.jp/

Fukusenka Chikugogawa Onsen

[筑後川温泉 ふくせんか]
Ukiha City ☎ 0943-77-3131
[MAP]P.43 B-2 [MC]166 682 602*55
[HP]https://www.fukusenka.com/



Shrines and Temples with Enduring Histories

Shrines and temples have played crucial roles in the culture and history of Japan. Their appeal also lies in the mystical atmosphere of the buildings.



开 Dazaifu Tenmangu Shrine 太宰府天満宮

This is a nationally-renowned Shinto shrine that draws approximately 10 million worshippers every year. The scholar, politician, and poet Sugawara-no-Michizane (late 9th to the beginning of the 10th century) is enshrined here and revered as the god of learning.

Dazaifu City [MAP]P.43 B-2 [MC]55 364 076*88
[HP]http://www.dazaifutenmangu.or.jp/



Fortunes are also available in English!

开 Kushida Shrine 櫛田神社

This shrine is a vital part of the lives of the people of Fukuoka City. Hakata Gion Yamakasa, the annual festival designated by UNESCO as an Intangible Cultural Heritage, is dedicated here.

Fukuoka City
[MAP]P.44 C-2
[MC]13 319 706*66



Photo credit: Fukuoka City



开 Tôchô-Ji Temple 東長寺

This is the 8th-9th century Buddhist monk Kūkai's first temple that he founded in Japan. It is known for the 5-storied pagoda and one of the biggest, wooden, seated statues of Buddha in Japan.

Fukuoka City [MAP]P.44 C-2 [MC]13 349 029*22
Photo credit: Fukuoka City



开 Miyajidake Shrine 宮地嶽神社

Renowned for evoking good fortune and business prosperity, this shrine is home to what is said to be the biggest *shimenawa* (special rope for ritual purification) in Japan. The view from the path approaching the shrine is captivating.

Fukuoka City [MAP]P.43 B-1 [MC]375 118 200*60
[HP]http://www.miyajidake.or.jp/

Enhance your luck for love!



Koinoki Shrine 恋木神社

This is the one of the rarest shrines in Japan that is dedicated to the god of love. The approach to the shrine as well as the shrine itself is covered with heart motifs.

Chikugo City [MAP]P.46 B-2 [MC]37 103 407*25



CROAK



Noirin-Ji Temple 如意輪寺

This Buddhist temple has a history that goes back over 1,200 years. It is well-known for its unique, frog-themed stone statues and figurines that are placed throughout the premises.

Ogori City [MAP]P.43 B-2 [MC]55 008 821*63

Designated as a World Heritage Site



Munakata Taisha Shrines 宗像神社

Of this collection of 3 shrines, Hetsumiya can be easily visited by car or bus. Munakata Taisha is part of the group of sites that was inscribed on the UNESCO World Heritage List in 2017.

Munakata City [MAP]P.43 B-1 [MC]168 571 329*03
[HP]http://www.munakata-taisha.or.jp/

The best way to get here is to ride the Nishitetsu Bus "Munakata-go."
http://www.nishitetsu.jp/bus/rosen/munakata.html

Etiquette for Visiting Shrines

MANNER
01

When you arrive, wash your hands first. Make sure that you do not place your hands into the water, but rather, use the provided dipper to pour water over your hands away from the cistern.

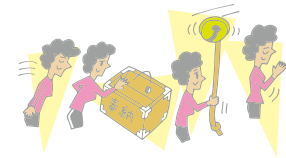


MANNER
02

When offering a prayer, line up behind fellow worshippers and wait for your turn. Do not cut lines or talk loudly.

MANNER
03

When it is your turn, bow in front of the shrine, ring the bell, close your eyes, and think of your wish. Please continue to be quiet at this moment as well.



MANNER
04

Drawing *omikujii* (paper fortunes) are part of the fun when worshipping at a shrine. 大吉 is read *daikichi* and this is the luckiest fortune. You can take your fortune home or tie it on the shrine premises.

Fukuoka's Traditional Crafts

Fukuoka produces 7 nationally-designated traditional crafts, including *Hakata-ori* textile and Hakata dolls. We boast many other types of textiles, potteries, and arts that have been passed down for centuries.

●.....Nationally-designated traditional crafts

01



●Hakata-Ori Textile [博多織]

This textile weaving began in Fukuoka after a Buddhist monk and a young merchant from Hakata visited the Song Dynasty of China in 1241 and acquired weaving techniques, which have been passed down the generations since. *Hakata-ori* is known for its thick fabric and distinct patterns, such as flowers and willow branches. It is often used for kimono belts called *obi*, including ones worn by the men who participate in the annual Yamakasa festival.



●Koishiwara-Yaki Pottery [小石原焼]

This pottery is known for a technique called *namagake*, in which the clay is glazed directly before firing. The resulting wares are appreciated for their simple and pleasant texture. There are also many unique patterns, such as *tobikanna*, *hakeme*, *kushime*, *nagashigake*, and *uchigake*.

02



●Agano-Yaki Pottery [上野焼]

Originally made as tea pottery, Agano-yaki is characterized by its many types of glazes that produce colorful and diverse designs on the thin and light body.



●Kurume Kasuri Textile [久留米絨]

This technique was invented by a 12-year-old girl during the Edo period (17th to mid-19th centuries). The indigo-dyed fabric woven with speckled patterns has become popular outside Japan as well.



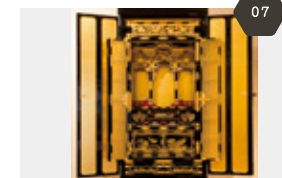
●Hakata Dolls [博多人形]

The origin of these dolls is believed to be clay figurines created as a hobby by a tile craftsman around 400 years ago. They have now become one of the most famous dolls of Japan.



●Yame Lanterns [八女提灯]

These lanterns are made out of local bamboo, washi paper made with the clear waters of the Yame area, and silk. Each of them is a masterpiece that exhibits the skills of the artisans.



●Yame Fukushima Buddhist Family Altars [八女福島仏壇]

Deceased family members are enshrined in private altars called *butsudan*. These made in Yame Fukushima are renowned for their lavish and elaborate designs. There are over 80 processes until completion.



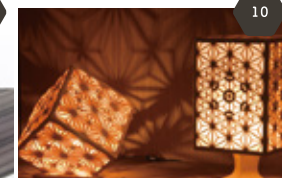
Takatori-Yaki Pottery [高取焼]

One of the 7 kilns of tea master Enshu, it was founded by Hachizan, a potter who arrived in Japan from the Korean peninsula around 1600, as an exclusive kiln for the ruling Kuroda family. It has a history of over 400 years.



Kokura-Ori Textile [小倉織]

A signature product of Kitakyushu, this sturdy and smooth fabric was woven for samurais' traditional clothing called *hakama* and *obi* (belts). This weave is characterized by its 3-dimensional vertical stripes.



Okawa Kumiko [大川組子]

This beautiful and meticulous craftwork has a history that goes back over 300 years. It is created by artisans who can adjust each piece to the micrometer.

Where to Purchase Fukuoka's Traditional Crafts

01 Hakata Machiya Folk Museum

[「博多町家」ふるさと館]
Fukuoka City
[MAP]P44 C-2 [MC]13 319 769*14
[HP]http://www.hakata-machiya.com/

OKANO, Hakata Riverain Store

[OKANO 博多リバーイン店]
Fukuoka City
[MAP]P44 C-2 [MC]13 348 028*41
[HP]http://okano1897.jp/

HAKATA JAPAN

[HAKATA JAPAN]
Fukuoka City
[MAP]P44 C-2 [MC]13 348 029*30
[HP]http://www.hakatajapan.jp/

Hakataori Kougeikan

[博多織工芸館]
Fukuoka City
[MAP]P43 A-2 [MC]13 277 893*60
[HP]http://sanui-orimono.co.jp/gallery/index

Umi-no-Ori-no-Sato Moriall

[宇美の織の里 もりおーる]
Umi Town, Kasuya District
[MAP]P43 B-2 [MC]35 543 068*85
[HP]http://www.hakataori.co.jp/moriall/

02/08 Pottery Gallery Tsuzumi at Tsuzumi-no-Sato

[つづみの里 陶ギャラリー 鼓]
Toho Village, Asakura District
[MAP]P43 C-2 [MC]748 011 357*47

Toho Mura Antenna Shop With+

[東峰村アンテナショップ With+]
Fukuoka City
[MAP]P43 A-2 [MC]13 284 639*22
[HP]http://withplus.jimdo.com/

Roadside Station Koishiwara

[道の駅 小石原]
Toho Village, Asakura District
[MAP]P43 C-2 [MC]748 159 370*14
[HP]http://toho-info.com/shop/michiko.html

03 Agano-Yaki Pottery Museum

[上野焼陶芸館]
Fukuchi Town, Tagawa District
[MAP]P43 B-2 [MC]36 753 323*03

04 Ikeda Kasuri Workshop

[池田絨工房]
Chikugo City
[MAP]P46 B-2 [MC]337 193 639*88

Hirokawa Aisai Market

[ひろかわ藍彩市場]
Hirokawa Town, Yame District
[MAP]P46 C-2 [MC]37 320 082*28
[HP]http://www.hirokankou.org/

Jibasan Kurume JR Kurume Station Store

[地場産くるとめ JR久留米駅店]
Kurume City
[MAP]P46 B-1
[MC]37 555 012*03

K KURUME KASURI

[K KURUME KASURI]
Fukuoka City
[MAP]P44 B-3 [MC]13 288 122*36
[HP]http://kurume-kasuri.jp/

05 Masuya, Hakata Station Store

[増屋 博多駅店]
Fukuoka City
[MAP]P44 C-2 [MC]13 320 471*85
[HP]https://hakata-masuya.com/

Hakata Doll Gallery Shogetsudo

[博多人形会館 松月堂]
Fukuoka City
[MAP]P44 B-2 [MC]13 318 837*63
[HP]https://shogetsudo.xsrv.jp/

Hakata Doll Shop Goto

[池田絨工房]
Fukuoka City
[MAP]P44 C-3 [MC]13 289 368*22
[HP]https://www.hakataningyou.com/

Hakata Doll Shop Hakusen

[博多人形のはくせん]
Fukuoka City
[MAP]P44 C-2 [MC]13 320 471*82
[HP]http://www.e-hakataningyou.com/

06/07 Yame Traditional Crafts Museum

[八女伝統工芸館]
Yame City
[MAP]P46 C-2 [MC]37 142 395*60
[HP]https://yamedentokougaikean.jimdo.com/

09 Shima-Shima Kokuraori, Main Store

[小倉 絹織 本店]
Kitakyushu City
[MAP]P45 C-2 [MC]16 465 217*66
[HP]http://shima-shima.jp/en

10 Okawa Woodwork Museum

[大川ウッドワークミュージアム]
Okawa City
[MAP]P46 A-2 [MC]37 030 805*85
[HP]https://woodworkmuseum.jimdo.com/

Kiri-Koubou & Kirikura

[桐里工房・桐蔵]
Okawa City
[MAP]P46 A-2 [MC]37 090 805*77
[HP]http://www.kirikoubou.com/about/kirikura

[TRADITIONAL JAPANESE CRAFTS OF FUKUOKA WEBSITE]

https://www.crossroadfukuoka.jp/traditionalcrafts/en/jpcraft/

Seasonal Flowers

Fukuoka is blessed with abundant flowers in each season. We have picked some of the best spots to view beautiful flowers, such as cherry blossoms—flowers representative of Japan—as well as autumn foliage.



[1] Cherry blossoms come in full bloom from late March to early April, painting the streets in what is called sakura pink. There are many renowned cherry blossom areas throughout Fukuoka prefecture, including Maizuru Park, which is the best viewing spot in Fukuoka City.

•Famous Viewing Spots for Cherry Blossoms
Maizuru Park [舞鶴公園] Fukuoka City [MAP]P:44 B-2 [MC]13 286 757*71
Amagi Park [甘木公園] Asakura City [MAP]P:44 B-2 [MC]155 020 753*03
Nagarekawa Cherry Blossom Avenue [流川桜並木] Ukiha City [MAP]P:43 C-3 [MC]166 588 336*47

[3] Directly facing the sun at all times, sunflowers are symbolic of summer. Yanagawa Sunflower Garden is the biggest in Fukuoka Prefecture, where the picturesque, golden scenery stretches as far as the eye can see.

•Famous Viewing Spots for Sunflowers
Yanagawa Sunflower Garden [柳川ひまわり園] Yanagawa City [MAP]P:46 A-3 [MC]69 720 184*47
Haki Sunflower Garden [杷木大ひまわり園] Asakura City [MAP]P:43 B-2 [MC]166 679 105*47

[2] The prime blooming season for wisteria is between late April and mid-May. It is a breathtaking sight when the flowers sway in the wind. Some of the best viewing spots include Kawachi Park, which boasts a 110 meter-long tunnel of wisteria blossoms.

•Famous Viewing Spots for Wisteria
Kawachi Wisteria Garden [河内藤園] Kitakyushu City [MAP]P:45 A-2 [MC]16 275 311*03
Nakayama Great Wisteria [中山の大藤] Yanagawa City [MAP]P:46 B-3 [MC]69 881 868*30
Kurogi Great Wisteria [黒木の太藤] Yame City [MAP]P:43 B-3 [MC]166 156 151*06

[4] Brightening up the town with vibrant yellow, red, and brown, Japan's autumn foliage is described to be the most beautiful in the world. Some of the best viewing spots are in Asakura City's Akizuki neighborhood, which is referred to as the Little Kyoto of the Chikuzen area.

•Famous Viewing Spots for Autumn Foliage
Akizuki Castle Remains [秋月城跡] Asakura City [MAP]P:43 B-2 [MC]155 173 471*71
Komyozen-ji Temple [光明禅寺] Dazaifu City [MAP]P:43 B-2 [MC]155 334 731*63
Gingkos at Taibaru [太原のイチョウ] Hirokawa Town, Yame District [MAP]P:46 C-2 [MC]37 292 372*60



Uminonakamichi Seaside Park [海の中道海浜公園]

Various kinds of flowers bloom here throughout the year, such as tulip from late March to mid-April, blue nemophila throughout April, hydrangea in June, and 1.5 million cosmos in October. The park also has a playground for children and is suitable for cycling, catering to those who enjoy outdoor fun.

Fukuoka City [MAP]P:43 A-2 [MC]13 552 437*74 [HP]https://uminaka-park.jp/



Nokonoshima Island Park [このしまアイランドパーク]

A 10-minute ferry ride from Fukuoka City will take you to this theme park. The island is renowned for its 500,000 canola flowers that bloom from mid-March to mid-April, as well as sunflowers in summer and cosmos in autumn.

Fukuoka City [MAP]P:43 A-2 [MC]13 456 344*71 [HP]http://nokonoshima.com/

Chikugo Regional Park [筑後広域公園]

You can enjoy seasonal flowers and trees, including cherry blossom and maple, at this spacious park adjacent to Kyushu Shinkansen Line's Funagoya Station.

Chikugo City [MAP]P:46 B-3 [MC]37 044 076*44 [HP]http://www.ajpark.jp/



FLOWER CALENDAR



Spend a Leisurely Time in Nature

Get Active Outdoors

Spend time in Fukuoka's countryside, moving about and picking fruits









01 Kyushu Olle: Explore Nature on Foot

Olle is a Korean word that refers to trekking courses, and it originally means "the narrow path that leads from the street to the front entrance of the house." There are 21 courses in Kyushu to walk along as you enjoy the landscape.




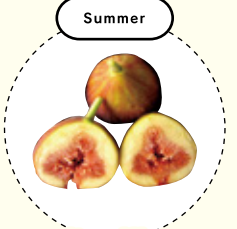

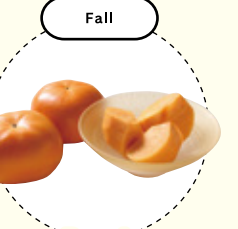
Following various signs that are placed at important locations along each course, such as objects called *kanse* as well as blue and red ribbons, is a unique feature of *olle*.

Fukuoka Olle Courses

- | | | | | | |
|---|---|--|---|---|---|
| <p>a</p>  <p>Munakata & Ōshima Island Course
[宗像・大島コース]</p> <p>Kyushu Olle's only course on an island, you can thoroughly enjoy the history and nature of the holy island of Ōshima, which has been designated as part of a World Heritage Site.
Munakata City [MAP]P.43 B-1</p> | <p>b</p>  <p>Yame Course
[八女コース]</p> <p>A course consisting of mild hilly terrain, it is especially suitable for beginners. The green tea fields and cherry blossoms in spring are breathtaking!
Yame City [MAP]P.43 B-3</p> | <p>c</p>  <p>Kurume & Mt. Koura Course
[久留米・高良山コース]</p> <p>There are so many things to see on this trail, including the wedded Sakaki trees, camellias of love, the hydrangea garden, and the Chikugo Plains!
Kurume City [MAP]P.43 B-3</p> | <p>d</p>  <p>Miyama & Mt. Kiyomizu Course
[みやま・清水山コース]</p> <p>After walking through the beautiful bamboo forest and cherry trees in Shinrin Park, climb Mt. Kiyomizu, and then enjoy shopping at the roadside station.
Miyama City [MAP]P.43 B-3</p> | <p>e</p>  <p>Chikuhō & Kawara Course
[筑豊・香春コース]</p> <p>Start at JR Saidōsho Station. You can enjoy a panoramic view of Mt. Kawaradake and the Saidōsho neighborhood from the peak of Yayama Hill, at 303 meters above sea level.
Kawara Town, Tagawa District [MAP]P.43 C-2</p> | <p>f</p>  <p>Fukuoka & Singu Course
[福岡・新宮コース]</p> <p>A course brimming with charm that features the sea, mountains, pine forests, and even history. Despite the urban locale, it can be enjoyed while feeling a sense of tranquility.
Shingu Town [MAP]P.43 B-2</p> |
|---|---|--|---|---|---|

ACTIVITY 02 Savor Fukuoka's Delicious Fruits!

Fukuoka produces delicious fruits every season. Premium fruits only exclusive to Fukuoka as well as fruit picking programs are very popular.

- | | | | |
|---|--|--|---|
| <p>Spring</p>  <p>Amaou Strawberries</p> <p>The name Amaou is an abbreviation of 4 Japanese words, which each mean red, round, big, and delicious. Only grown in Fukuoka, it is a popular brand across Japan.</p> | <p>Summer</p>  <p>Toyomitsu Hime Figs</p> <p>These strawberries are known for their rich juices, soft texture, and sugar content of over 17 degrees. The colorful and fleshy fruit will make your mouth water!</p> | <p>Fall to Winter</p>  <p>Amaui-Kiwis</p> <p>Fukuoka Prefecture's original brand, Amaui, has a sugar content of over 16 degrees and has a yellowish tone to the fruit.</p> | <p>Fall</p>  <p>Akiou Persimmons</p> <p>A new type of persimmon made in Fukuoka, these fruits are big, have a high sugar content, and have a crispy texture. It is the world's first fruit with very few seeds.</p> |
|---|--|--|---|

Fruit Picking Spots

- | | | | |
|---|---|--|--|
| <p>a</p>  <p>Ukiha Orchard Village Yamandon
[うきは果樹の村やまんどん]</p> <p>Ukiha City ☎0943-77-4174
[MAP]P.43 C-3 [MC]166 595 305*06
[HP]http://yamandon.com/
•Reservation required</p> | <p>b</p>  <p>Nakano Fruit Farm
[中野果実園]</p> <p>Kurume City ☎0943-72-2967
[MAP]P.43 B-3 [MC]166 580 214*63
[HP]http://www.nakanokajitsuken.jp/
•Reservation required</p> | <p>c</p>  <p>Blueberry-no-Mura Farm
[観光農園ブルーベリーの村]</p> <p>Kurume City ☎0942-78-0300
[MAP]P.43 B-2 [MC]37 685 596*88
[HP]http://www.blueberrynomura.com/
•Reservation required</p> | <p>d</p>  <p>Shiraki-no-Ichigo Strawberry Farm
[白木のいちご]</p> <p>Ogori City ☎090-8832-8391
[MAP]P.43 B-2 [MC]55 008 853*41
[HP]http://www.shiraki-ichigo.com/
•Reservation required</p> |
|---|---|--|--|

Highlights

Please refer to the website Japan Fruits (<https://the-way-of-japan.com/fruits/>) for information on picking seasons, fruit types, and other orchards and farms.

ACTIVITY 03 Nakama Footpath: Enjoy the Beautiful Landscapes of Each Season!

Footpaths allow you to enjoy nature and the townscape. With 6 different courses that each range from 3 to 5 km, you can explore Nakama's allure. Suitable for both solo travelers and groups.

NAKAMA FOOT PATH
Nakama City
[MAP]P.43 B-1
[HP]http://www.nakamap.jp/footpath/



ACTIVITY 04 Cycling: Feel the Wind as You Pedal!

There are several areas, including Shikanoshima Island and Onga District, where you can rent bicycles to enjoy cycling. Feel the brisk ocean breeze as you bike to your heart's content!

<Shikanoshima Island>
Shika Shima Cycle (Bicycle Rental Shop)
[MAP]P.43 A-2 [MC]13 577 149*44
Minato Cycle Station
[MAP]P.43 A-2 [MC]13 584 002*58
<Onga District>See p. 26



Shikanoshima & Uminonakamichi Cycle Tourism



GOOD PLACES TO VISIT
福岡エリア

FUKUOKA AREA

There is so much to see in the center and suburbs of Fukuoka City as well as in the popular neighboring city of Itoshima. This area also offers many unique experiences to all visitors.

FUKUOKA AREA

01

Seaside Momochi

[シーサイド百道]

This is the waterfront area that includes Fukuoka Tower and Fukuoka City Museum. The man-made beach beyond these landmarks is the perfect place to refresh yourself. Easily accessible by an approximately 20-min. bus ride from Tenjin.

Fukuoka City **[MAP]**P.43 A-2
[MC]13 312 703*44
[HP]<https://www.marizon-kankyo.jp/>



Photo credit: Fukuoka City



FUKUOKA AREA
02

Akizuki [秋月]

This district is referred to as the Little Kyoto of Chikuzen, as it continues to maintain its streetscape since its era as a flourishing castle town in the Edo period (17th to mid-19th centuries). The rows of blooming cherry blossom trees in spring and the multihued foliage in autumn are important aspects of the Japanese landscape.

Asakura City **[MAP]**P.43 B-2



You can enjoy seasonal sceneries Ohori throughout the year

FUKUOKA AREA

03



Photo credit: Fukuoka City



Photo credit: Fukuoka City

Ohori Park Noh Theater is a cultural facility that shows the Japanese traditional performing arts of Nohgaku and Kyogen.

Ohori Park [大濠公園]

An oasis for Fukuoka residents, the large pond occupies approximately 226,000 m² of the 398,000 m² park. The water and the leafy green of the trees create a beautiful landscape. Cafés and a restaurant are located within the premises.

Fukuoka City **[MAP]**P.44 A-2
[MC]13 285 823*66 **[HP]**<http://www.ohorikouen.jp/>



FUKUOKA AREA
04

Yatai (Food Stall) [屋台]

These are food stalls that open only at night. Renowned as a food culture unique to Fukuoka, most of the shops are found in the Tenjin and Nakasu neighborhoods. Most offer Hakata specialties such as *ramen* (noodles), *yakitori* (chicken skewers), and *gyōza* (dumplings).

Fukuoka City [HP] <http://yatai.fukuoka.jp/>
Photo credit: Fukuoka City



FUKUOKA AREA
05



Tsutaya Book Store in Ropponmatsu has a wide selection of books as well as stationery and knick-knacks!

Ropponmatsu 421

[六本松421]

A complex facility opened in 2017, it houses the Fukuoka City Science Museum, along with its planetarium, as well as various reputed restaurants and cafés.

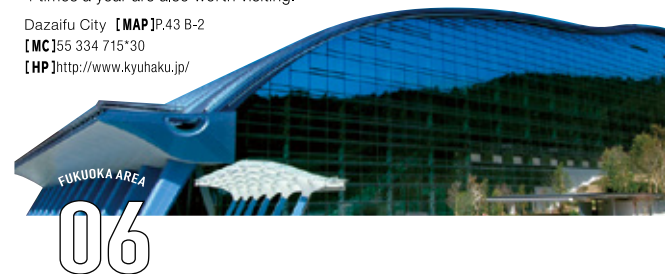
Fukuoka City [MAP]P.44 A-3 [MC]13 255 829*55 [HP] <http://www.jrkbm.co.jp/ropponmatsu421/>



Kyushu National Museum [九州国立博物館]

The history of Japan and its cultural exchanges with its neighbors throughout Asia are featured in this museum. Special exhibitions held 3 to 4 times a year are also worth visiting.

Dazaifu City [MAP]P.43 B-2 [MC]55 334 715*30 [HP] <http://www.kyuhaku.jp/>



FUKUOKA AREA
06



Triple Water Wheels [三連水車]

This is the oldest working group of water wheels in Japan that continue to direct water into the surrounding rice paddies. They can be seen in operation from mid-June to mid-October every year.

Asakura City [MAP]P.43 B-2 [MC]166 735 031*03

FUKUOKA AREA
07

Ainoshima Island [相島]

A small island located in the Genkai Sea off the coast of Fukuoka Prefecture, it is known as a "cat island." Social media has helped bring more visitors in recent years.

Shingu Town, Kasuya District [MAP]P.43 A-2 [MC]375 013 387*88



FUKUOKA AREA
08

Workshops



Suito Fukuoka [好いとう福岡]

This is a new kind of tourist information office that offers varied, easy-to-join programs such as kimono-wearing and sushi-making. Also available is a restaurant that offers Japanese banquet cuisine called *kaiseki*.

Fukuoka City ☎092-724-1055 [MAP]P.44 B-2 [MC]13 317 052*44 [HP] <https://suito.inboundhub.jp/ja>
•Reservation required



Yuki Tanaka's Hakata Doll Studio [田中勇気博多人形工房]

Run by Hakata Ningyo doll artist Yuki Tanaka and his wife, their doll-painting program is popular with tourists. The artists' careful instructions are reassuring for any beginner.

Fukuoka City ☎080-1600-1042 [MAP]P.44 C-2 [MC]13 319 759*25 [HP] <http://hakataningyo.boj.jp/>
•Reservation required



Hakata Traditional Craft and Design Museum [博多伝統芸能館]

This is a facility where visitors can experience the traditional culture of Hakata. Traditional arts such as dances by female entertainers called *Hakata geigi* and *Hakata koma* (spinning top) performances are available on monthly event days.

Fukuoka City ☎092-441-1118 [MAP]P.44 C-2 [MC]13 319 709*30 [HP] <http://member.fukunet.or.jp/dentou/>
•Reservation required



Chikushino City Park [筑紫野市総合公園]

This park is located at the foot of Mt. Tenpai and has ample playground equipment. Particularly popular among children are the roller slider and the gigantic Tenpai Ship shaped like a pirate vessel.

Chikushino City [MAP]P.43 B-2 [MC]55 180 322*28



Hostel Nekokura [ねこ蔵ホテル]

The concept of this accommodation is for the guests to enjoy one another's company by playing with cats. You can play with the felines within the shelter area only. A sake bar adjoins this hostel.

Fukuoka City ☎070-5028-0014 [MAP]P.44 C-1 [MC]13 380 120*28 [HP] <https://www.nekokura.co.jp/>
•Reservation required



Sample Riki [サンプルレキ]

Visitors can try their hand at making food samples at this food sample company. You will most certainly be astonished at the quality of the products, which look like real foods.

Fukuoka City ☎092-567-0018 [MAP]P.43 B-2 [MC]13 078 690*63 [HP] <http://www.5670018.com/>
•Reservation required

Popular Spots in Fukuoka

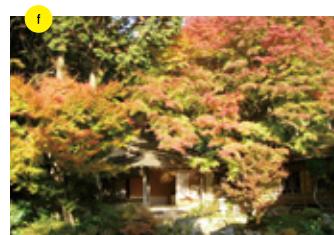
[ITOSHIMA]



Take a Trip to Resort-Like Itoshima

Below is a list of must-visit cafés and attractions in Itoshima, Fukuoka's number-one sightseeing area. Personalized bus tours are also popular.

MAP P.43 A-2



[a] The torii (sacred Shinto gate) facing the sea and the wedged rocks tied together with a shimenawa (sacred rope) are symbols of the Futamigaura Coast [b] Popular café Current [c] Angel's wings, a wall painting that is trending on social media [d] Sushi and Japanese Food Kū offers sushi along with a view of the ocean [e] Keya-no-Oto is the biggest of the top 3 basalt rock caves in Japan [f] Autumn and spring foliage is beautiful at Raizan Sennyoji Temple [g] Oyster shacks are a winter staple in Itoshima [h] Itosaisai is one of the most visited farmers' markets in Japan [i] Ito Monogatari yogurt drink, Tsumande Goran Itoshima Roll, and Mataichi's Hanashio Pudding are all popular desserts from Itoshima

- a** Futamigaura Coast [MC]224 788 175*28
- b** current [MC]224 664 591*55
- c** Angel's Wings [MC]224 789 733*22
- d** Sushi and Japanese Food Kū [MC]224 792 625*36
- e** Keya-no-Oto Sea Cave [MC]1030 043 156*22
- f** Raizan Sennyoji Daijōin Temple [MC]224 252 861*30
- g** Itosaisai Farmers' Market [MC]224 492 290*88
- h** Mataichi's Hanashio Pudding [MC]182 866 781*66
- i** Tsumande Goran Itoshima Roll [MC]224 727 523*28

CHECK!

Chibitabi Itoshima Bus Tour
Itoshima 1-Day Bus Trip

Participants meet at a JR train station to board a microbus on this personalized tour of Itoshima, "Chibitabi." The bus can be chartered for groups of 5 to 12 people (10,000 yen per person). In addition to their recommended courses, customized plans are also available. Closed every Wednesday.

[HP]http://officepal-travel.com/english
[MAIL]info@chibi-tabl.com



Hakata Izumi

[博多いづみ]

This traditional Japanese restaurant has been conveying the allure of fugu (pufferfish) cuisine since its founding in 1923. Here, you will encounter delicious dishes like no other.

Fukuoka City [MAP]P.44 C-2 [MC]13 289 796*22
[HP]http://www.hakata-izumi.com/

Listed in the Michelin Guide



Kayanoya Restaurant

[レストラン「茅乃舎」]

You can savor Japanese food at this traditional house with a thick, thatched roof. Reservation is recommended, as the restaurant is filled to capacity at lunchtime every day.

Hisayama Town, Kasuya District
☎ 092-976-2112
[MAP]P.43 B-2
[MC]68 002 627*82
[HP]http://www.kayanoya.com/restaurants/restaurant/
•Reservation required



Fukuoka Area

Gourmet Food Picks

French Patisserie Jurokku

[フランス菓子16区]

Renowned as the store that created dacquoise made of almond-flavored meringue.

Fukuoka City
[MAP]P.44 C-3 [MC]13 287 048*58
[HP]http://www.16ku.jp/

Ichiran, Headquarters
Flagship Store

[一蘭 本社総本店]

This is the flagship store of world-scale ramen house Ichiran, the pride of Fukuoka. Also featured is a yatai (food stall)-style storefront where you can enjoy alcoholic drinks with your noodles.

Fukuoka City
[MAP]P.44 B-2 [MC]13 318 715*28
[HP]https://ichiran.com/

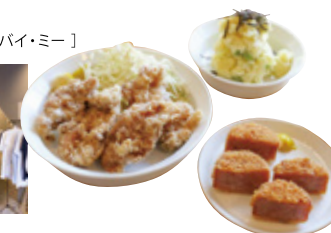
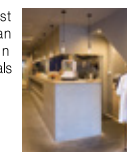


Hotel Stand by Me

[スタンド・バイ・ミー]

The concept behind this guest house is "a bar where you can spend the night." It is an up-and-coming place where locals and tourists meet and interact.

Fukuoka City [MAP]P.44 A-2
[MC]13 316 314*03
[HP]http://stand-by-me.jp/



ZAOU Tenjin Store

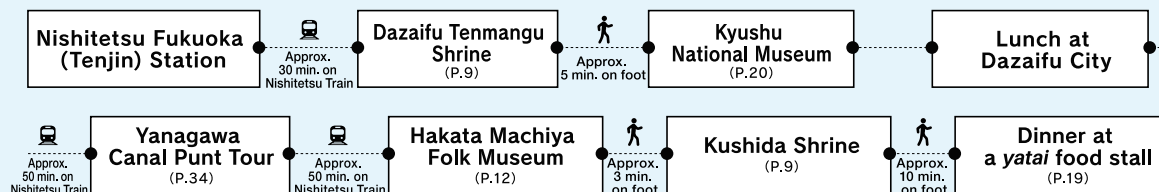
[ざうお 天神店]

This is a unique izakaya (Japanese pub) where tables are built along live fish tanks. Customers can fish their orders from their seats and have their catch prepared to their preference.

Fukuoka City
[MAP]P.44 B-2 [MC]13 317 851*77
[HP]http://www.zauo.com/



Recommended Course for 1-day Sightseeing



●Note: Purchase Nishitetsu Train's Dazaifu Stroll Ticket Pack and Dazaifu & Yanagawa Sightseeing Ticket Pack to enjoy the most economical fares for this course. [HP]http://www.ensen24.jp/kippu/

Kokura Castle

[小倉城]

Originally built in 1602, the current building was reconstructed in 1959. Documents on the families of the domain lords Hosokawa and Ogasawara are exhibited in the interior of the castle, in addition to a diorama of the castletown of Kokura among others.

Kitakyushu City
 [MAP]P.45 B-2 [MC]16 465 665*71
 [HP]<http://www.kokura-castle.jp/>



GOOD PLACES TO VISIT
 北九州エリア

KITAKYUSHU AREA

Kitakyushu City boasts various kinds of sightseeing destinations, from historical buildings such as a castle, temples, and residences that are replete with traditional Japanese ambience, to renowned flower-viewing spots and night view areas. Fun, hands-on programs are also gaining popularity.



Ashiyagama-no-Sato

[芦屋釜の里]

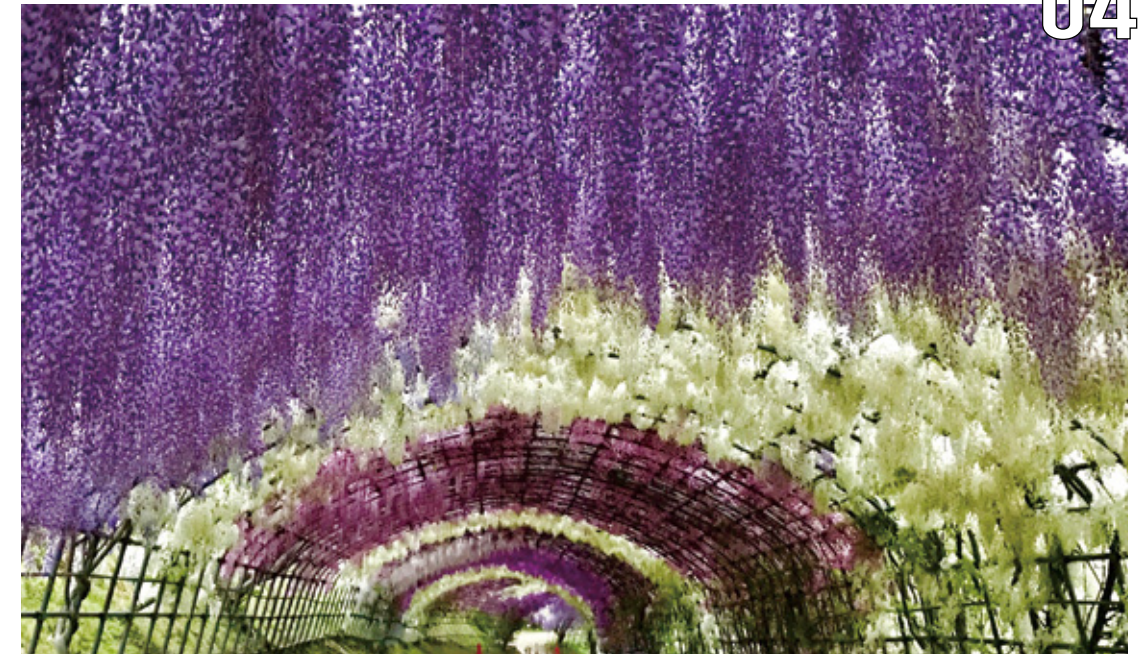
This facility's mission is to revive the Ashiyagama, a type of kettle for the traditional Japanese tea ceremony that was used from the mid-14th to the early 17th centuries.

Ashiya Town, Onaga District [MAP]P.43 B-1 [MC]68 859 119*41
 [HP]<https://ashiyakankou.com/ashiyagama/>

Kawachi Wisteria Garden [河内藤園]

A famous viewing spot for wisteria, it was selected by CNN as one of Japan's 31 most beautiful places. The best viewing time is from the end of April to early May. Visitors are required to purchase tickets in advance at convenience stores.

Kitakyushu City [MAP]P.45 A-2 [MC]16 275 311*03 [HP]<https://kawachi-fujien.com/>



Buzen Kokubun-Ji Temple's Three-Storeyed Pagoda

[豊前国分寺三重塔]

One of the tallest, 3-storeyed pagodas in Japan at a height of 23.5 meters. The *shinbashira*, the central pillar that penetrates the entire tower, is made from a single tree trunk of a tree that was estimated to be approximately 200 years old. It is one of the tangible cultural properties designated by the prefecture.

Miyako Town, Miyako District
 [MAP]P.43 C-2 [MC]96 657 057*36





KITAKYUSHU AREA
05

Mojikō Retro [門司港レトロ]

Many vintage buildings in this area are reminiscent of the Meiji to the early Showa era (mid-19th to mid-20th century). This port is also famous for the specialty dish called *Yakikare* (baked curry) as well as for having Japan's first bargain sales of bananas, now hosted by the Vendors' Association of Mojikō Bananas.

Kitakyushu City 【MAP】P.45 C-1 【MC】16 715 144*52 【HP】<http://www.mojiko.info/>



Many restaurants offer varieties of Yakikare, or baked curry, which is a popular local dish that is topped with cheese and heated in the oven.



KITAKYUSHU AREA
06

Former Kurauchi Residence [旧蔵内邸]

This is the former residence of the Kurauchi family that managed coal mines in the Chikuhō region from the Meiji (mid-18th to early 19th centuries) to early Showa eras (early 19th to late 20th centuries). The Japanese-style architecture of this building that was constructed over 110 years ago and the beautiful Japanese garden are a must-see.

Chikujo Town, Chikujo District 【MAP】P.43 C-2 【MC】96 509 018*17 【HP】<http://chikujo-rekishi.jp/category/kyukurauचितel/>

KITAKYUSHU AREA
07



Giant Chair in Buzen City

[豊前市の巨大椅子]

At 6 meters tall and 3 meters wide, this enormous chair has been gaining attention on social media. You can sit on top of it, but please be careful not to get injured!

Buzen City 【MAP】P.43 C-2 【MC】383 536 462*00 【HP】<http://moringakkou.wixsite.com/tanpopo>

Must See!
Pop Culture Spot

Anime, manga, games, and more!



Center of Japan's Globally-Popular Pop Culture!

Find various kinds of pop culture here, from anime to games. Particularly popular with tourists is Kitakyushu Manga Museum, where approximately 50,000 books are available for reading.

ARUARU City [あるあるシティ] Kitakyushu City 【MAP】P.45 B-2 【MC】16 496 103*17 【HP】<http://aruarucity.com/>

Workshops



Senbutsu Limestone Cave
[千仏鍾乳洞]

Suitable for a casual cave adventure at just 900 meters long! The zone where visitors proceed by walking through a knee-deep stream is particularly popular with children.

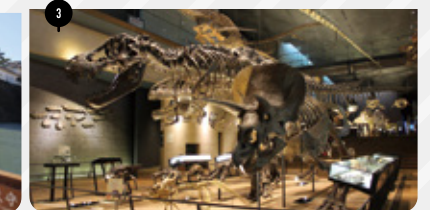
Kitakyushu City ☎ 093-451-0368 【MAP】P.43 C-2 【MC】16 018 114*22 【HP】<http://www.senbutsu-cave.com/>



Muromachi Comon
[室町コモン]

Kimono rental shop that caters to tourists. They also offer typically Japanese programs, such as experiencing a matcha tea ceremony and riding a rickshaw. You can make reservations online.

Kitakyushu City ☎ 050-3558-4736 【MAP】P.45 B-2 【MC】16 495 011*41 【HP】<https://8030812comon.shopinfo.jp/>
•Reservation required



Kitakyushu Museum of Natural History & Human History

[北九州市立いのちのたび博物館] One of the biggest natural and historical museums in western Japan. The popular exhibitions are both highly entertaining and educational, and the dinosaur skeletal preparations are particularly fascinating.

Kitakyushu City ☎ 093-681-1011 【MAP】P.45 A-2 【MC】16 397 819*85 【HP】<http://www.knmh.jp/>



TOTO Museum
[TOTOミュージアム]

TOTO boasts the top domestic share of sanitary ware production, of items such as toilet bowls and sinks. This museum displays its history and vision for manufacturing.

Kitakyushu City ☎ 093-951-2534 【MAP】P.45 B-2 【MC】16 434 268*60 【HP】<https://jp.toto.com/museum/>
•Reservation required



Seaside Cycling
[シーサイドサイクリング]

This 7.5-km cycling road connects Hatsu Beach with Ashiya Coast. The entire route follows the shore and offers a very enjoyable ride. Rental bicycles are also available.

Okagaki Town, Onga District ☎ 093-281-5050 【MAP】P.43 B-1 【MC】68 759 035*06 【HP】<http://okagaki-kankou.com/>



Genkai-Nada Sushi School
[玄海灘すし学校]

Lessons are offered every day, excluding Wednesdays, from April 1 to October 30. Here, you can make authentic sushi by the sea as you receive instructions from sushi chefs! You can later savor them along with freshly-fried tempura at the same venue located along the sea. Open to both adults and children.

Okagaki Town, Onga District ☎ 093-281-2277 【MAP】P.43 B-1 【MC】68 758 146*74 【HP】<http://www.markai-hospitality.com/>
•Reservation required

Popular Spots in Kitakyushu

[Night Views]



3 Top Nightscapes of Kitakyushu City's Sparkling Lights

Read below to find out about Kitakyushu's stunning nightscapes, from the observation platform on Mt. Sarakura that is easily reached by cable car to the breathtaking lights of the factory complex.



Night View from Mt. Sarakura

Take in the panoramic night view of Kitakyushu from the observatory platform near the summit of the 622-m mountain. **[MAP]**P.45 A-2 **[HP]**<http://sarakurayama-cablecar.co.jp/>



Night View of Mojiko

The harbor view from Mojiko Retro Observation Room's height of 103 m is simply stunning.



Factory Night View of Dōkai Bay

The Yahata area, home to steel and cement plants, is a mecca for factory nightscapes fans.

Umi Terrace Buzen

[うみてらす豊前]

Savor bite-sized oysters from Buzen Sea, a delicacy exclusive to winter. The restaurant run by the local fishermen's association also offers set meals of other seasonal seafood throughout the year.

Buzen City **[MAP]**P.43 C-2
[MC]145 722 600*55
[HP]<http://umiterrace-buzen.com/>



Japanese Restaurant Denbōji-no-Sho

[古民家食庵 伝法寺庄]

This restaurant was established in the 137-year-old former Takeuchi residence and offers local home-style dishes. Reservations must be made 2 days in advance.

Chikujo Town, Chikujo District
☎ 080-1760-3633 **[MAP]**P.43 C-2

[MC]196 418 230*88

[HP]<http://chikujo-rekishi.jp/category/denbouji/>

•Reservation required



 Kitakyushu Area
Gourmet Food Picks

Tetsu Nabe Main Store

[本店 鉄なべ]

A well-established restaurant known for the local delicacy Yahata Gyoza dumplings, this is the birthplace of gyoza served on cast-iron pans.

Kitakyushu City
[MAP]P.45 A-2
[MC]16 392 431*74



Daigakudo [大學堂]

This eatery was built in collaboration between Kitakyushu City University and Tanga Market. The popular Daigakudon is a bowl of rice on which customers top food that they buy in the market.

Kitakyushu City
[MAP]P.45 B-2
[MC]16 465 324*77
[HP]<http://www.daigakudo.net/>



KIKUTARO Traditional Japanese Sweets

[菓匠きくたろう]

This establishment offers a variety of traditional Japanese sweets such as *karinto*, *daituku*, and *ohagi*. Stop by the adjoining café to enjoy lunch as well.

Kitakyushu City
[MAP]P.43 C-1 **[MC]**16 234 519*77

[HP]<https://www.kikutaro.net/>



 Kitakyushu Area
Gift Picks

Yousukou-no-Butaman [揚子江の豚まん]

These Chinese-style, steamed pork buns made of juicy meat wrapped in soft dough are available at various locations, including the Kokura Station branch.

Kitakyushu City
[MAP]P.45 B-2 **[MC]**16 466 780*47
[HP]<http://yousukou.com/>



Grand Azur's Chocolate Bolt [グランダジュール ネジチョコ]

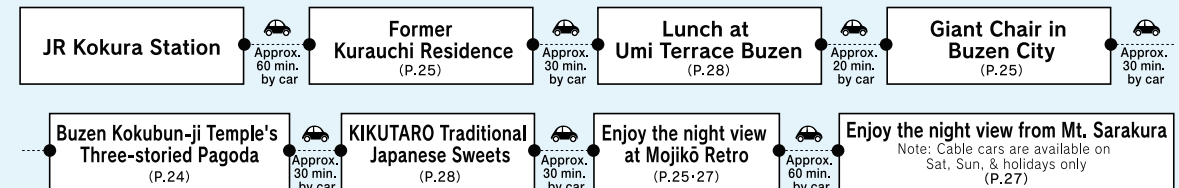
An assortment of chocolates shaped like nuts and bolts are characteristic of the steelworks town of Kitakyushu.

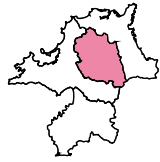
Kitakyushu City
[MAP]P.45 C-2
[MC]16 319 710*22

[HP]<http://grandazur.buyshop.jp/>



Recommended Course for 1-Day Sightseeing





GOOD PLACES TO VISIT
筑豊エリア

CHIKUHO AREA

The old buildings that remain in this district are a testament to its past as a coal-mining area that prospered until the 1950s. Visitors can also enjoy the surrounding, abundant nature.



CHIKUHO AREA

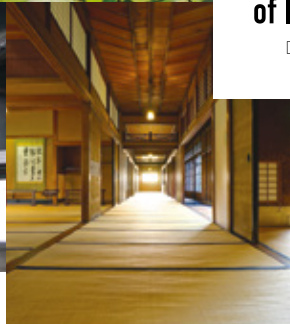
01

Former Residence of Ito Den-emon

[旧伊藤伝右衛門邸]

Ito Den-emon, known as the coal king of Chikuho, lived in this residence that was built for his marriage to the poet Byakuren Yanagiwara, who was active from 1915 to 1956. Many aspects of the building feature the skills of the carpenters who specialized in constructing shrines and temples.

Iizuka City
[MAP]P.45 B-3 [MC]55 892 019*52
[HP]http://www.kankou-iizuka.jp/denemon/



▲The most convenient way to get to this city is on the Nishitetsu Bus "Den-Emon Express."
[HP]http://www.nishitetsu.jp/bus/rosen/denemon.html

CHIKUHO AREA
02



Kaho Theater [嘉穂劇場]

This kabuki theater-style playhouse was founded in 1922 and rebuilt in 1931. It is the only surviving theater, maintained in its original form, out of the 48 that once existed in this Chikuho region alone. Many overseas visitors enjoy the free cosplay zone.

Iizuka City [MAP]P.45 B-3 [MC]55 772 892*88
[HP]http://kahogekijyo.com/



CHIKUHO AREA

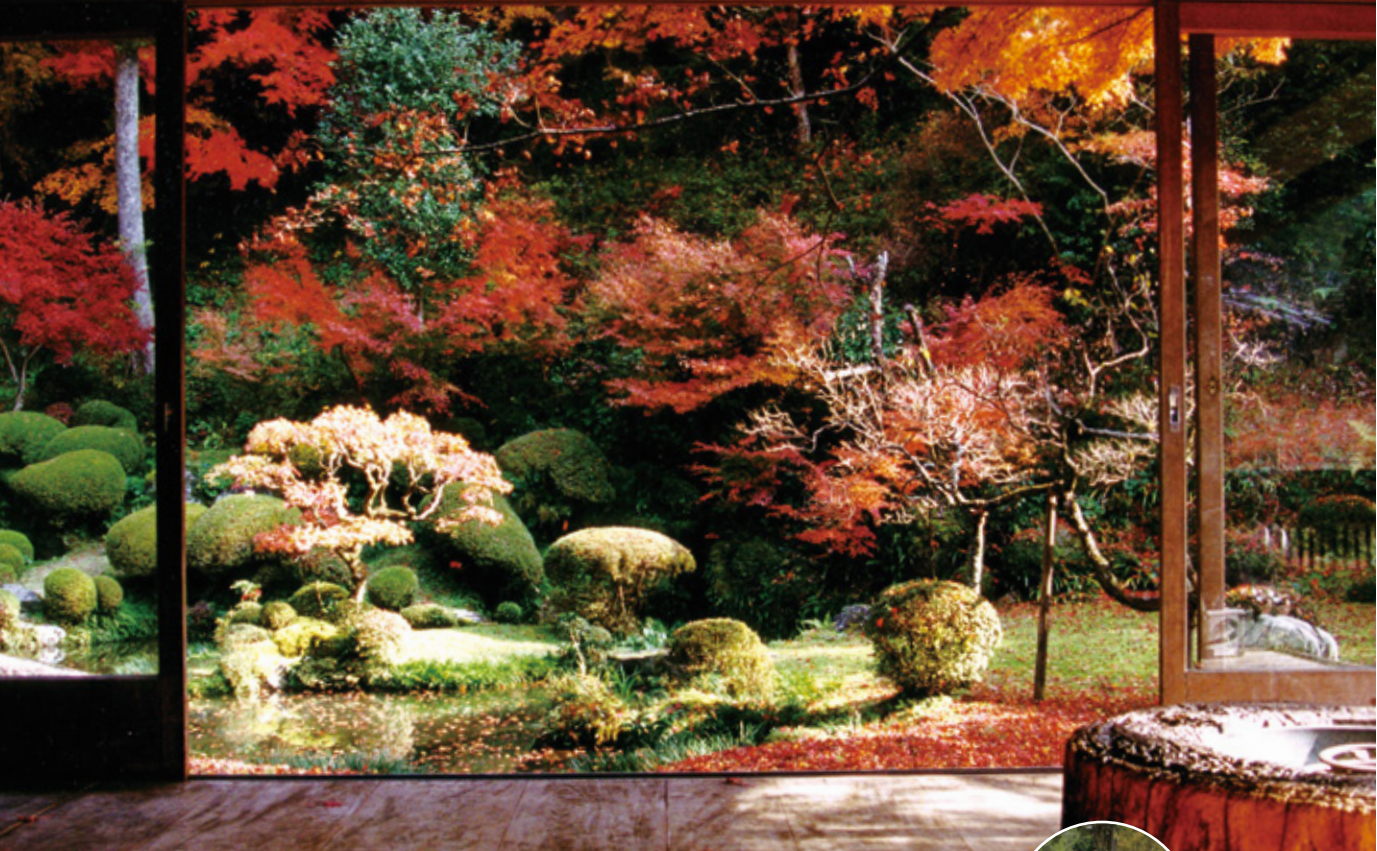
03

Yakiyama Pass

[八木山峠]

From late March to early April, 640 cherry blossom trees flower throughout the observatory park. Enjoy the flowers as you walk along the mall.

Iizuka City
[MAP]P.45 A-3 [MC]55 730 193*74



CHIKUHO AREA

04

Gyorakuen Garden [藤江氏魚楽園]

A traditional Japanese garden designed by the artist-monk Sesshū, the beauty of the fresh, leafy green in spring and colorful foliage in autumn is stunning. A café is located on the premises.

Kawasaki Town, Tagawa District [MAP]P.43 B-2 [MC]96 187 690*25 [HP]http://gyorakuen.jp/



Workshops



Agano-Yaki Pottery Gallery [上野焼陶芸館]

Products are exhibited and sold from all kilns manufacturing Agano ware, which boasts a history of over 400 years. Visitors can try their hands at painting pottery and using the potter's wheel for up to 30 individuals at a time.

Fukuchi Town, Tagawa District ☎ 0947-28-5864 [MAP]P.43 B-2 [MC]96 753 323*03 [HP]http://www.agano-yaki.com/

•Reservation required



Hiyoiko Honpo, Honami Factory [ひよ子本舗・穂波工場]

You can visit and watch the manufacturing process of Hiyoiko, the nationally-renowned confection that was born in Fukuoka (twice a day at 9:30 and 10:30). Freshly-baked Hiyoiko is offered at the end of the tour. Make your reservation up to one week before your preferred day.

Iizuka City ☎ 0948-23-0745 [MAP]P.45 A-4 [MC]55 681 815*41 [HP]http://www.hiyoiko.co.jp/company/factory.html#kengaku

•Reservation required



Iikane Palette [いいかねPalette]

This multipurpose facility utilizes a former elementary school building. The hostel was built on the concept of "staying overnight at school," and users can bring their own food to have a barbecue on the grounds.

Tagawa City ☎ 0947-49-3300 [MAP]P.45 C-4 [MC]96 335 346*63 [HP]http://palette.jp/net/

•Reservation required



Kurate Gakuen [くらて学園]

A Japanese subculture facility established in an abolished school, cosplay photo shoots and other projects can be held on site, including large events in the gymnasium.

Kurate Town, Kurate District ☎ 0949-28-7890 [MAP]P.43 B-2 [MC]68 380 202*60 [HP]http://kurategakuen.com/

•Reservation required



Rakushindo Honpo [楽心堂本舗]

This long-established confectionery store manufactures a traditional Japanese treat called *rakugan*, which is made of colored sugar and rice flour. Visitors can try their hand at making this popular offering for Buddhist and Shinto altars, but reservations must be made 2 weeks beforehand. No workshops from June through August. Note 1: Workshop capacity is from 1 to 10 participants. Note 2: Dates and time are limited to every 2nd and 4th Saturdays from 13:00.

Fukuchi Town, Tagawa District ☎ 0947-22-7288 [MAP]P.45 C-3 [MC]96 634 600*58 [HP]http://www.rakushindo.jp/

•Reservation required



Sun Village Akane [サンビレッジ茜]

Year-round skiing on a synthetic turf can be enjoyed at this outdoor sports facility. There also is a restaurant that serves local Chikuho beef barbecue among other dishes.

Iizuka City ☎ 0948-72-3331 [MAP]P.43 B-2 [MC]55 462 872*33 [HP]http://www.akane-ski-fukuoka.com/

•Reservation required

Tagawa City Coal Mining and Historical Museum

[田川市石炭・歴史博物館]

This museum exhibits coal mining-related documents as well as Sakubei Yamamoto's illustrations, which were the first of Japan's nominations that were inscribed on UNESCO's Memory of the World Register.

Tagawa City [MAP]P.45 C-3 [MC]96 487 478*60 [HP]http://www.joho.tagawa.fukuoka.jp/kij00390/



©Yamamoto Family

CHIKUHO AREA

05



CHIKUHO AREA

06

Kiyomizu Temple [清水寺]

Located at an altitude of approximately 200 meters, the view from this temple is outstanding. The sea of clouds that often appear early in the morning after a rainfall is particularly magical.

Miyawaka City [MAP]P.43 B-2 [MC]68 159 072*28

CHIKUHO AREA

07

Mt. Hiko [英彦山]

This power spot has been venerated as one of the top 3 hallowed grounds of Shugendo (path of training and testing). Hikosan Jingu Shrine is located halfway up the mountain and is easily reached by Hikosan Slope Car. Various kinds of flowers bloom each season in the flower garden at the foot of this mountain.

Soeda Town, Tagawa District [MAP]P.43 C-2 [MC]383 213 657*77 [HP]http://www.soeda-kankou.com/area01/index.html





Kanhokuto Sake Brewery [寒北斗酒造]

Made from local water and select rice, Kanhokuto is this sake brewery's label that enjoys high acclaim.

Kama City
 [MAP]P.43 B-2
 [MC]55 479 286*77
 [HP]http://kanhokuto.com/



Asahiya

[朝日家]

60-year-old eatery is famous for its horumon nabe, which is beef offal stir-fried and simmered in a cast iron hot pot.

Tagawa City
 [MAP]P.45 C-3
 [MC]96 488 798*77



Aogiri

[料亭 あおぎり]

Enjoy traditional Japanese cuisine in this nationally-registered tangible cultural property that has observed over 100 years of history pass by.

Tagawa City
 [MAP]P.45 C-3
 [MC]96 487 886*77
 [HP]http://aogiri.info/



Chikugo Area Gourmet Food Picks



NERO BOTANICA

[ネロボタニカ]

Built in the image of a botayama (spoil tip) that is formed from waste rock that is removed in coal mining, this dining complex houses motsunabe (offal hot pot) and sushi restaurants.

Iizuka City [MAP]P.45 B-4
 [MC]55 742 448*66 [HP]http://nerobota.jp/



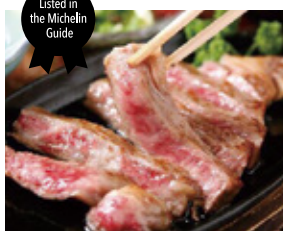
©yamamoto ikunori

Laputa Farm

[ラピュタファーム]

This all-you-can-eat buffet restaurant stands in the middle of a fruit orchard. Savor the best of the local, seasonal vegetables.

Kawasaki Town,
 Tagawa District
 [MAP]P.45 C-4
 [MC]96 249 646*00
 [HP]http://laputa-f.com/



Akanesou [あかね荘]

This restaurant specializes in Chikugo beef cuisine, such as steak and shabu-shabu hot pot. Savor this local, branded meat that does not appear often on the market!

Iizuka City
 [MAP]P.43 B-2
 [MC]55 494 472*25



CHIKUGO AREA 01 Yanagawa Canal Punt Tour

[柳川の川下り]

Take a leisurely ride on boats called donkobune through the canals that crisscross the city in grids. The average trip takes about 70 minutes to travel approximately 4 kilometers. Enjoy a different view of the town from the water.

Yanagawa City
 [MAP]P.46 A-3 [MC]69 875 573*30

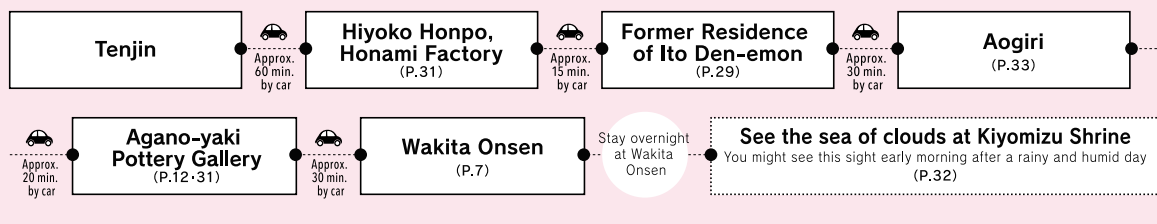


GOOD PLACES TO VISIT
 筑後エリア

CHIKUGO AREA

There are many sightseeing spots that are centered on the culture, traditions, and topography of this Chikugo area in southern Fukuoka prefecture. Another must-try is the food made from local fruits and vegetables.

Recommended Course for 1-Day Sightseeing





CHIKUGO AREA
02

Yame Central Tea Garden [八女中央大茶園]

This approximately 70-hectare tea plantation is located in Yame, one of the main tea production regions of Fukuoka. Take in the splendid landscape of the tea bushes growing on the gently rolling hills. The entire area forms an *olle* (hiking) course.

Yame City [MAP]P:43 B-3 [MC]37 205 695*41 [HP]http://www.city.yame.fukuoka.jp/kanko/3/1457320346856.html



CHIKUGO AREA
03

Miyanohara Pit at Miike Coal Mine [三池炭鉱 富原坑]

This is one of the Sites of Japan's Meiji Industrial Revolution inscribed on the UNESCO World Heritage List. Visitors can see the hoist control room made of red bricks as well as the oldest existing steel tower in Japan.

Omuta City [MAP]P:43 B-3 [MC]69 339 239*47 [HP]https://www.miike-coalmines.jp/miyanohara.html

Naritasan Kurume Temple [成田山 久留米分院]

This temple is famous for its 62-meter tall Kuse Jibo Kannon (Merciful and Compassionate Goddess of Salvation) statue, one of the tallest in Japan.

Kurume City [MAP]P:46 C-1 [MC]37 409 761*47 [HP]http://www.kurume-naritasan.or.jp/



CHIKUGO AREA
04

CHIKUGO AREA
05



Yanagawa Tachibana-Tei Ohana [柳川藩主立花邸 御花]

[柳川藩主立花邸 御花]

A nationally-designated scenic spot, traditional Japanese features include a beautiful garden that can be most appreciated from the parlor and the great hall that comprises 100 tatami mats.

Yanagawa City [MAP]P:46 A-3 [MC]69 843 482*22 [HP]http://www.ohana.co.jp/

Hoshino Village

A region blessed with starry nights and magnificent nature

The village of Hoshino is well-known for its beautiful night sky and green tea production. Tea making and tasting as well as lodging at onsen (hot spring) inns are some of the things that can be enjoyed here.



a Star Museum [星の文化館]

Star-gazing events are held on clear nights at this observatory that boasts a 100-cm diameter telescope (the biggest in Kyushu) and a planetarium. Offered all week, excluding Tuesdays, from 18:30. Also available are special programs limited to visitors staying overnight.

Yame City ☎ 0943-52-3000 [MAP]P:43 B-3 [MC]166 256 765*25 [HP]http://www.hoshinofurusato.com/constellation •Reservation required

b Tea Museum [茶の文化館]

Popular workshops include green tea and matcha tea making. Yame's specialty teas, such as the finest grade of *gyokuro* called *Shizuku*, along with Japanese confections, can be savored in the café area as well.

Yame City ☎ 0943-52-3003 [MAP]P:43 B-3 [MC]166 286 015*00 [HP]http://www.hoshinofurusato.com/tea •Reservation required

c Ike-no-Yamaso [池の山荘]

Located in the mountains at an altitude of 300 meters, guests can enjoy a panoramic view of Hoshino Village from the free-flowing, outdoor bath called *Miharashi-no-yu*, which is known to be a hot spring for beautiful skin with high alkalinity at a pH of 9.4.

Yame City ☎ 0943-52-2082 [MAP]P:43 B-3 [MC]166 286 433*00 [HP]http://www.hoshinomura-kenoyama.com/kenoyamasou.html •Reservation required

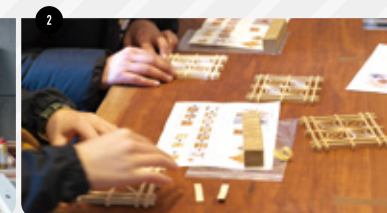
Workshops



1 Tsutsui Tokimasa Fireworks Company [筒井時正玩具花火製造所]

This fireworks factory was conferred the "Cool Japan Award 2017" and offers handmade *senko hanabi* (Japanese sparklers) workshops, which are rare in Japan. Artisans provide lectures on how to make the fireworks for your peace of mind.

Miyama City ☎ 0944-67-0764 [MAP]P:46 B-3 [MC]69 735 194*71 [HP]http://tsutsuitokimasa.jp/ •Reservation required



2 Okawa Woodwork Museum [大川ウッドワークミュージアム]

Visitors can try their hand at assembling *kumiko*, a woodwork technique in which wooden chips are fitted together without a single nail. Reservations are required beforehand at ¥1,500 per person.

Okawa City ☎ 0944-85-8607 [MAP]P:46 A-2 [MC]37 030 805*85 [HP]https://woodworkmuseum.jimdo.com/ •Reservation required



3 Shirou Kunimitsu [四郎國光]

This smithy was established in 1786 and continues to hand down the swordsmith tradition to this day. Visitors can experience cutting with a Japanese sword for ¥5,000 per person. Reservations must be made at least 10 days beforehand (maximum of 20 people per day).

Omuta City ☎ 0944-58-1340 [MAP]P:43 B-3 [MC]69 551 211*14 [HP]http://www.shirounimitsu.com/ •Reservation required

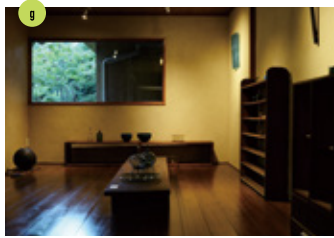
Popular Spots in Chikugo

[UKIHA]



Visit Ukiha Area, Reminiscent of Japan's Past

There are many spots where you can spend a relaxing time, such as the white-walled town, shrines, popular Japanese & Western confectionery shops, and a book café.

MAP P.43
B-2/B-3Listed in
the Michelin
Guide

[a] A shrine that offers an outstanding view of Ukiha City. [b] The townscape with white-walled buildings exudes a traditional Japanese ambience. [c] A book café with over 2,000 books. One of the popular dishes is the Mixed-berry French Toast. [d] This udon restaurant is directly operated by Nagao Noodle Company. Open only between 12:00 to 15:00 on Sundays. [e] A shop specializing in *dorayaki* inside Kura Tourist Center. [f] The must-try at this popular confectionery store is Karinto Minagi. [g] Displays and sells glass craftworks. [h] Mаметan, a caramel *monaka* dessert, is available here. [i] In spring, the cherry blossom avenue extends for 2 km along the south bank of Kose River.

a Ukiha Inari Shrine
[MC]166 560 308*47

d Udon Restaurant Ido
[MC]166 616 841*17

f Asahiame Honpo Kaguraya
Confectionery Store
[MC]166 876 195*74

h Japanese Confectionery Store Budouya
[MC]166 559 637*88

c MINOU BOOKS&CAFE
[MC]166 616 669*47

e Qui-ti-coco
[MC]166 616 880*11

g Gallery Budou-no-Tane
[MC]166 559 636*55

i Nagarekawa Cherry Blossom Avenue
[MC]166 588 336*47

Check it out!



Fukusenka Chikugogawa Onsen

[筑後川温泉 旅館ふくせんか]

Exceptionally located along the bank of Chikugo River, this inn's free-flowing onsen filled with beautifying properties is available for overnight guests for 24 hours! Non-guests can also soak in the bath between 8:00 and 21:00. Potable onsen water is also available.

Ukiha City ☎0943-77-3131

[MC]166 682 602*55 [HP]https://www.fukusenka.com

•Reservation required



Restaurant HEURIGE

[森のレストラン HEURIGE]

This restaurant is managed by the adjacent winery. Wine made from grapes grown in this vineyard is paired with original dishes made from local produce.

Kurume City

[MAP]P.43 B-3 [MC]166 548 266*55

[HP]http://www.kyoho-winery.com/restaurant_shop

Moican Ramen
Main Store

[モヒカンラーメン 本店]

A famous Kurume ramen house, tourists particularly enjoy the combination of ultra-thin noodles and mildly fragrant pork bone broth.

Kurume City

[MAP]P.46 C-1 [MC]37 466 827*58

[HP]http://mohikan-ramen.com/index.php

Chikugo Area
Gourmet
Food Picks

Kushiyaki

Hotarugawa [串焼 ほたる川]

Listed in
the Michelin
Guide

This eatery serves the local specialty, Kurume Yakitori (skewered grilled chicken). Their original grilled skewer of small intestine filled with burdock root is a must-try!



Kurume City

[MAP]P.46 C-1

[MC]37 527 549*44

Shoubunsu Vinegar Brewery

[庄分酢]

A vinegar brewery with a history of over 300 years, products include mild vinegar cider. Tastings and tours of the brewery available.



Okawa City

☎0944-88-1535

[MAP]P.46 A-2

[MC]87 149 356*25

[HP]http://www.shoubun.jp

•Reservation required

Chikugo Area
Gift
Picks

Unagi-no-Nedoko [うなぎの寝床]

This store showcases various products from around the Chikugo region. Many items convenient for day-to-day living, including *monpe* pants made from Kurume Kasuri textile.

Yame City ☎0943-22-3699

[MAP]P.46 C-2 [MC]37 141 680*06

[HP]http://unajino-nedoko.net

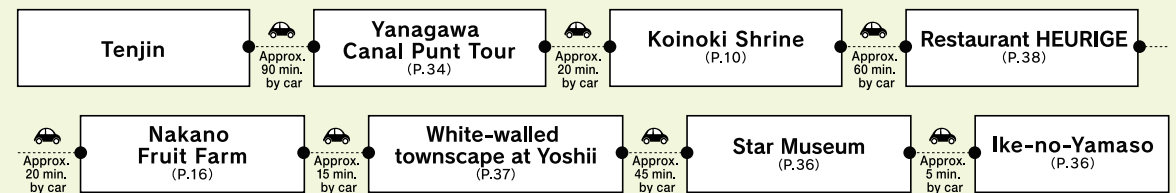


Monpe are very comfortable, traditional pants. Available in many different colors and patterns.



Kakuda Seicha's Okuyame green tea is known for its mild flavor

Recommended Course for 1-Day Sightseeing



Fukuoka Event Schedule

● ...Fukuoka Area ● ...Kitakyushu Area ● ...Chikuhō Area ● ...Chikugo Area

Spring March to May



May 3rd & 4th

- **Hakata Dontaku Minato Festival** (Fukuoka City)
The parades are a must-see at this festival that represents Fukuoka. It also draws one of the largest audiences out of all festivals across Japan.



3rd Sat & Sun of May

- **Kawawatari Jinkōsai Festival** (Tagawa City)
One of the 5 biggest festivals in Fukuoka Prefecture, 2 *mikoshi* (portable shrines) and 11 Yamakasa floats dynamically cross the river.

● FACo FUKUOKA ASIA COLLECTION

Mid-March (Fukuoka City)

The runway show is the highlight of this fashion event that is popular with young women.



● Kurume Tsutsuji Festival

April 5th to May 5th (Kurume City)

Held in Kurume Hyakunen Park when the azaleas are in bloom, over 300,000 plants of 150 cultivars are displayed.

● Ōkawa Woodcraft Festival

Mid-April (Ōkawa City)

Approx. 200 furniture companies from Ōkawa City, the capital city of furniture-making, exhibit and sell their newest collections!

● Agano-Yaki Pottery Spring Festival

Late April (Fukuchi Town, Tagawa District)

Find many amazing deals and exhibitions at this annual event held in the pottery village of Agano.



● Koshiwara-Yaki Pottery Spring Festival

May 3rd to 5th (Toho Village, Asakura District)

Held in both spring and autumn, you can purchase Koshiwara ware at a discount of 20% during these events!

Summer June to August



July 1st to 15th

- **Hakata Gion Yamakasa Festival** (Fukuoka City)
UNESCO Intangible Cultural Heritage
The towering Kazari Yamakasa displays and the Oiyama floats carried by the men of Hakata are truly impressive.



4th Fri to Sun of July

● Tobata Gion Ōyamagasa (Kitakyushu City)

UNESCO Intangible Cultural Heritage

One of the largest summer festivals in Fukuoka Prefecture, over 100,000 people visit annually to see this event.

● Kokura Gion Daiko

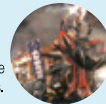
3rd Fri to Sun of July (Kitakyushu City)

Participants striking drums as they walk about the town are a sight to see in this festival, which has a history of approx. 390 years.

● Ōmuta Daijyama Festival

Last Sat & Sun of July (Ōmuta City)

In this fire ritual, people riding on floats decorated with massive serpents parade through the neighborhoods while setting off fireworks.



● Chikugo River Fireworks Festival

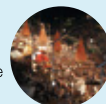
August 5th (Kurume City)

This event boasts a history of over 350 years and is known for its 18,000 fireworks that are set off along the river.

● Wasshoi Hyakuman Summer Festival

1st Sat & Sun of August (Kitakyushu City)

Some of the highlights of Kitakyushu's largest festival are the many dance performances and the display of 4,000 fireworks!



● Asia Port Festival in KANMON

August 13th (Kitakyushu City)

Fireworks are shot up at Moji in Kitakyushu as well as its opposite shore. Over 1.15 million people visit each year.

Autumn September to November



October 1st

- **Miare Festival** (Munakata City)
Many fishing boats parade to pray for safety and good catch.



Mid-November

● Keichiku Kagura-no-Sato Festival (Yukuhashi City)

The largest festival in the Keichiku region, where 7 surrounding municipals come together to perform a magnificent dance.

● Ōkawa Woodcraft Festival

Early October (Ōkawa City)

Held once again in autumn, all the manufacturers sell their fall collections in Ōkawa, the city of furniture!

● Koishiwara Autumn Pottery Festival

3 days, ending on the 2nd Mon of October

(Toho Village, Asakura District)

Approx. 50 kilns sell their potteries at a discount of 20%.



● Agano-Yaki Autumn Pottery Festival

Mid-October (Fukuchi Town, Tagawa District)

This is the prime opportunity to see the displays of the newest Agano ware, which boasts a history and tradition of over 400 years.

● Hakushu Festival Waterway Parade

November 1st to 3rd (Yanagawa City)

In commemoration of poet Hakushu Kitahara, who passed away on November 2nd, many paper lanterns are lit and released to flow down the canal.

● Kyushu Grand Sumo Tournament

Early November (Fukuoka City)

Each year in November, the Grand Sumo Tournament is held in Hakata Ward, Fukuoka City, for 2 weeks.

Winter December to February



February 11th to April 3rd

- **Yanagawa Dolls' Festival Sagemon Meguri** (Yanagawa City)
Hina dolls and colorful Sagemon ornaments are displayed to wish for children to grow up in good health.



January 7th

● Daizenji Tamataregu Shrine's "Oniyo" (Fire Festival) (Kurume City)

What is said to be Japan's largest torch, measuring 13 m tall and weighing 1.2 t, is lit up to offer a magical sight!

● Tooka Ebisu Festival

January 8th to 11th (Fukuoka City)

Many people offer prayers for prosperity in business. The lottery and eateries are only some of the many highlights of this festival.

● Fūrōgu Shrine Festival

February 8th to 11th (Ōkawa City)

Over 150,000 people visit the shrine during this time to see the rituals and participate in events to ward off evil spirits.

● Jojima Sake Brewery's Annual Opening of Sake Barrels

Mid-February (Kurume City)

Organized by several breweries in the area, you can taste many kinds of sake!



HINAMATSURI EVENTS

● Chikuzen Iizuka Dolls Festival

Early February to Late March (Iizuka City)

Hina dolls are displayed in various locations throughout Iizuka, brightening up the entire town.



● Chikugo Yoshii Hina Doll Tour

February 11th to April 3rd (Ukiha City)

During the plum trees' flowering season, many Hina dolls are displayed throughout the beautiful townscape of traditional, white-walled buildings.

TRANSPORTATION

Modes of Transportation in Fukuoka

Public transportation is highly recommended when traveling in and outside Fukuoka Prefecture. There are several methods you can choose from, depending on your destination, price range, and/or preferred speed.

Public Transportation



Nishitetsu Bus

You can reach many popular tourist destinations in Fukuoka City by bus! Long distance buses to various locations throughout Kyushu (and even Tokyo!) depart from the bus terminals at Hakata Station and Tenjin.

Nishitetsu Kurashi Net
[HP] <http://www.nishitetsu.jp/bus/>



Nishitetsu Train (Tenjin-Ōmura Line & Dazaifu Line)

The Tenjin-Ōmura Line connects Tenjin with the cities of Futsukaichi, Kurume, Yanagawa, and Ōmura, while the Dazaifu Line branches off at Nishitetsu Futsukaichi Station for Dazaifu. No additional fee is required to board the limited express or express trains! This is a convenient option for visiting Dazaifu or Yanagawa.

Nishitetsu Kurashi Net
[HP] <http://www.nishitetsu.jp/train/>



Fukuoka City Subway

Use the subway to move westward from Fukuoka Airport. The subway trains stop at major shopping areas such as Hakata and Tenjin, which are a 5-min ride and 11-min ride from the airport, respectively! This is also the best method to get to Momochi Beach and Itoshima.

[HP] <http://subway.city.fukuoka.lg.jp/eng/index.php>



JR Kyushu

From Hakata Station, you can go to various areas in and outside Fukuoka Prefecture. If you're traveling to Kumamoto and Kagoshima, the fast and convenient Kyushu Shinkansen is your best option! Hakata Station is also an excellent place to shop for souvenirs.

[HP] <http://www.jrkyushu.co.jp/english/>

When Traveling by Car

Car Rentals

There are many car rental shops around Fukuoka Airport and Hakata Station. Also available is a toll road pass exclusive to non-Japanese tourists, with which you can enjoy unlimited rides on expressways throughout Kyushu managed by NEXCO West Japan.



Kyushu Expressway Pass (KEP)

If you meet the requirement of providing valid proof of identity, such as your passport and international driver's license, this pass allows for unlimited driving on the Kyushu Expressway for ¥3,500 for 2 days up to ¥11,500 for 10 days.

[Available at] 180 stores across Kyushu of the following companies: Orix Rent-A-Car, Times Car Rental, Toyota Rent a Car, NISSAN Rent a Car, Nippon Rent-a-Car, Budget Rent a Car.

Taxis

The basic fare starts at ¥580. Premium Taxi, distinguished by the Hakata-ori textile patterns on the body, is best suited for sightseeing.

Fukuoka City Taxi Association

[HP] <http://www.taxi-fukcty.or.jp/>



Good Value Tickets <Transportation & Sightseeing>

These special tickets for activities and transportation are affordable options that you can't miss!

FUKUOKA TAIKEN BUS TICKET

You can choose 2 programs to experience things that are unique to Fukuoka/Japan, such as savoring local cuisine, watching a sports game, and trying on kimono. Accompanied by a pass for unlimited rides on Nishitetsu Bus, ¥2,570 is a bargain!

[Price] ¥2,570 [Available at] Nishitetsu Tenjin Express Bus Terminal, Nishitetsu Fukuoka (Tenjin) Station, etc.

Fukuoka Open Top Bus

This roofless, double-decker bus takes you around major tourist sites in Fukuoka City. Various courses are offered, such as the Hakata District or the Seaside Area. A multilingual website and rental audio guides are also available.

[Price] 1 Course: Adult ¥1,540, Child ¥770

[Available at] Fukuoka City Hall Ticket Counter

[HP] <https://fukuokaopentopbus.jp/>



Good Value Travel Passes

Many kinds of passes are available for public transportation. Be sure to make use of them according to your itinerary!

Kyushu Area

SUNQ Pass

This pass allows you to enjoy unlimited rides on expressway buses within the island of Kyushu as well as Shimonoeki City in Yamaguchi Prefecture (on Honshu Island). Almost all regular bus routes and even certain ship routes are also applicable! With a grand total of approx. 2,400 bus routes that you can take, this pass is all you need to get around Kyushu!

[Price] Northern Kyushu Area 3-Day Pass: ¥9,000 Southern Kyushu Area 3-Day Pass: ¥8,000 All Kyushu Area 3-Day Pass: ¥11,000, 4-Day Pass: ¥14,000

[Available at]

Nishitetsu Tenjin Expressway Bus Terminal, Hakata Bus Terminal, etc.
[HP] <http://www.sunqpass.jp/index.shtml>

JR Kyushu Rail Pass

This pass offers unlimited rides on all trains operated by JR Kyushu, including limited express trains, rapid trains, and even Shinkansen! Perfect for touring Kyushu's highlights.

[Price] Northern Kyushu Area 3-Day Pass: ¥8,500 All Kyushu Area 3-Day Pass: ¥15,000, 5-Day Pass: ¥18,000

[Available at]

Hakata Station, Kokura Station, JTB Fukuoka Airport Global Counter, etc.
[HP] <http://www.jrkyushu.co.jp/english/railpass/railpass.html>

Within Fukuoka Prefecture

FUKUOKA TOURIST CITY PASS

This 1-day pass is valid for Nishitetsu Bus, Nishitetsu Train, Showa Bus, JR Kyushu, and Fukuoka City Subway, allowing you to visit major tourist sites in Fukuoka City and Dazaifu. You can also receive special discounts at various facilities by presenting this Pass!

[Price] Fukuoka City: Adult ¥820, Child ¥410 (Excludes Nishitetsu Train) Fukuoka City + Dazaifu: Adult ¥1,340, Child ¥670

[Available at]

Nishitetsu Tenjin Expressway Bus Terminal, Nishitetsu Fukuoka (Tenjin) Station, etc.
[HP] <https://yokanavi.com/en/tourist-city-pass/>

MARUTTO FUKUOKA

This 2-in-1 ticket set offers unlimited rides on Nishitetsu Bus and Nishitetsu Train for 1 day each. You can also go to the cities of Dazaifu and Yanagawa, which are popular tourist destinations. As the bus ticket and train ticket are separate, you can use them on different days, allowing you to explore Fukuoka for up to 2 days with a single purchase!

[Price] Adult ¥2,000, Child ¥1,000

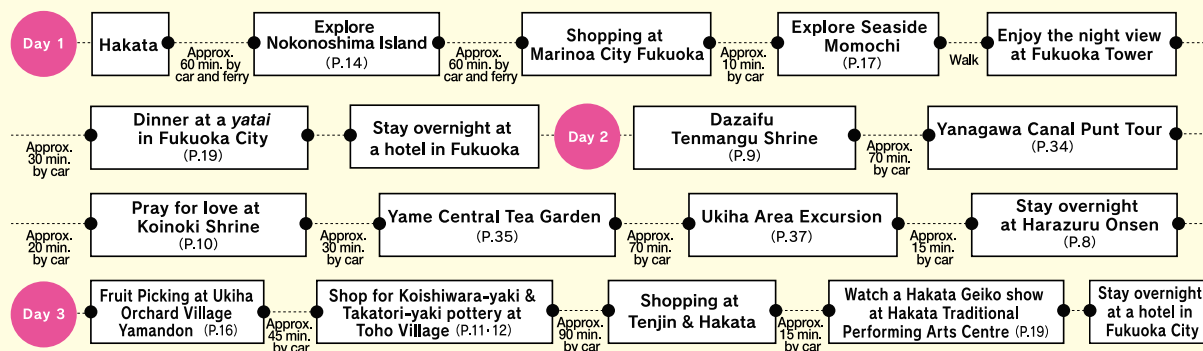
[Available at]

Nishitetsu Tenjin Expressway Bus Terminal, Nishitetsu Fukuoka (Tenjin) Station, etc.
[HP] <http://www.nishitetsu.jp/en/ticket/>

Recommended Course

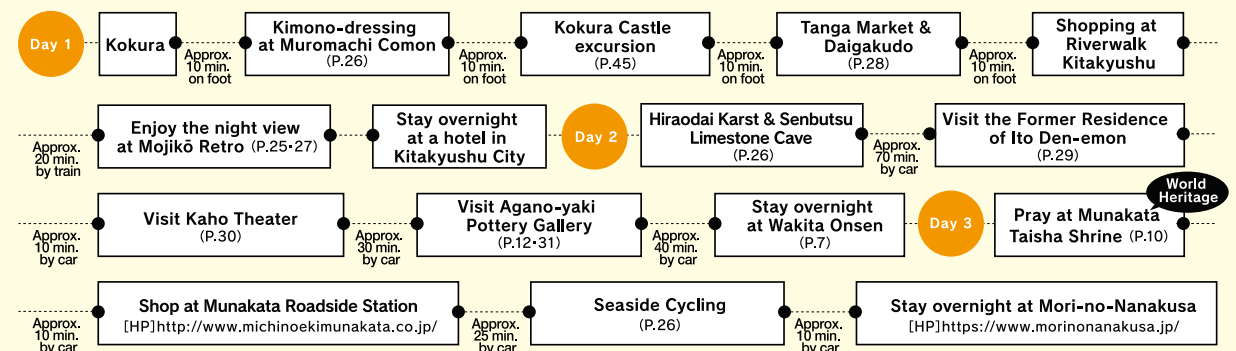
Start at Hakata

Fukuoka & Chikugo Area Course (Journey for Urban Excursion & Immersion in Nature)

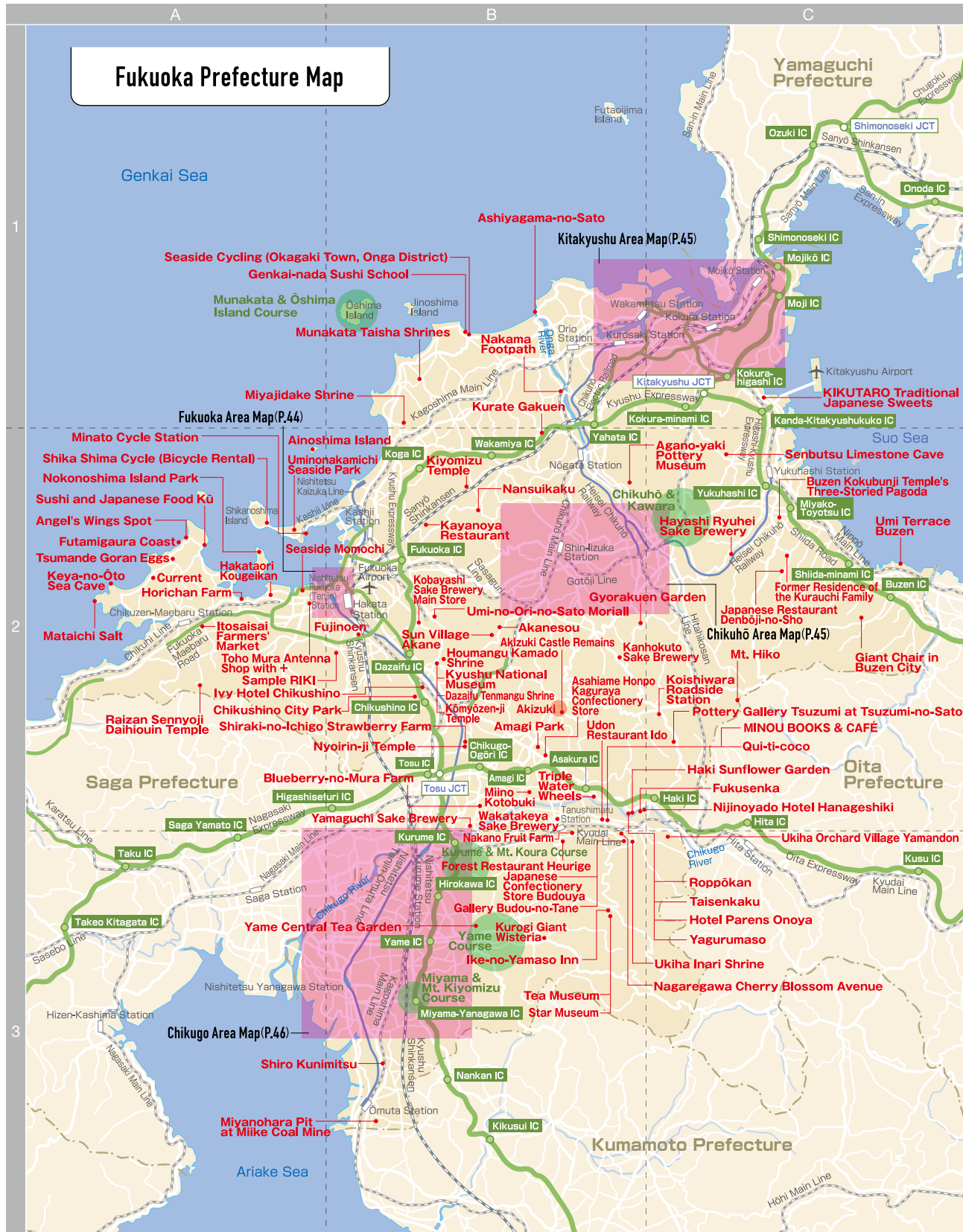


Start at Kokura

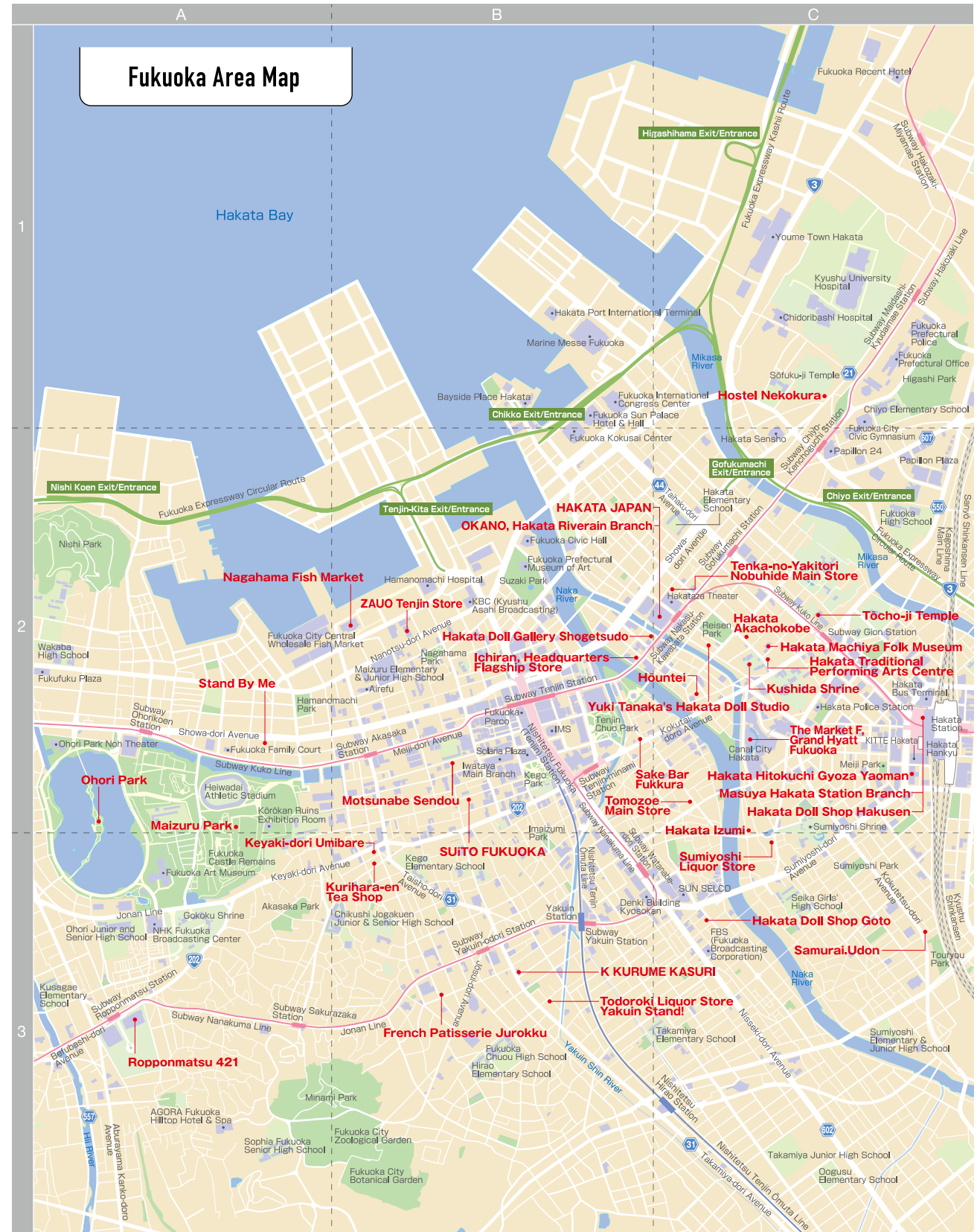
Kitakyushu & Chikuhō Area Course (Journey to Experience a Retro Townscape, History, and Culture)



Fukuoka Prefecture Map



Fukuoka Area Map





Japan on the World Map



Fukuoka, Japan



Airplane

Kitakyushu Airport (KKJ)

← Approx. 1 hr. 45 min.

Fukuoka Airport (FUK)

← Approx. 1 hr. 55 min.

← Approx. 2 hr. 05 min.

← Approx. 1 hr. 15 min.

Tokyo (Haneda Airport / HND)

Tokyo (Narita International Airport / NRT)

Osaka (Kansai International Airport / KIX)



Shinkansen

Hakata Station

← Approx. 4 hr. 55 min.

← Approx. 3 hr. 20 min.

← Approx. 2 hr. 25 min.

Tokyo Station

Nagoya Station

Shin-Osaka Station

Kitakyushu Airport

Fukuoka Airport

FUKUOKA

Hakata Station

Nagoya Station

Shin-Osaka Station

AICHI

OSAKA

Kansai International Airport

TOKYO

Narita International Airport

Tokyo Station

Haneda Airport



<https://m.facebook.com/fukuoka.prefecture.tourism>



VISIT FUKUOKA

<https://visit-fukuoka-japan.com>



Looking for the real Japan?
Try Fukuoka!

<http://www.travelerfriendly.jp/en/>

TRAVEL SUPPORT CALL CENTER

Dial **092-687-6639** FREE Interpretation Service
24 hours, 365 days, 15 languages

Emergency Phone Numbers

Police **110**

Fire Engine/Ambulance **119**