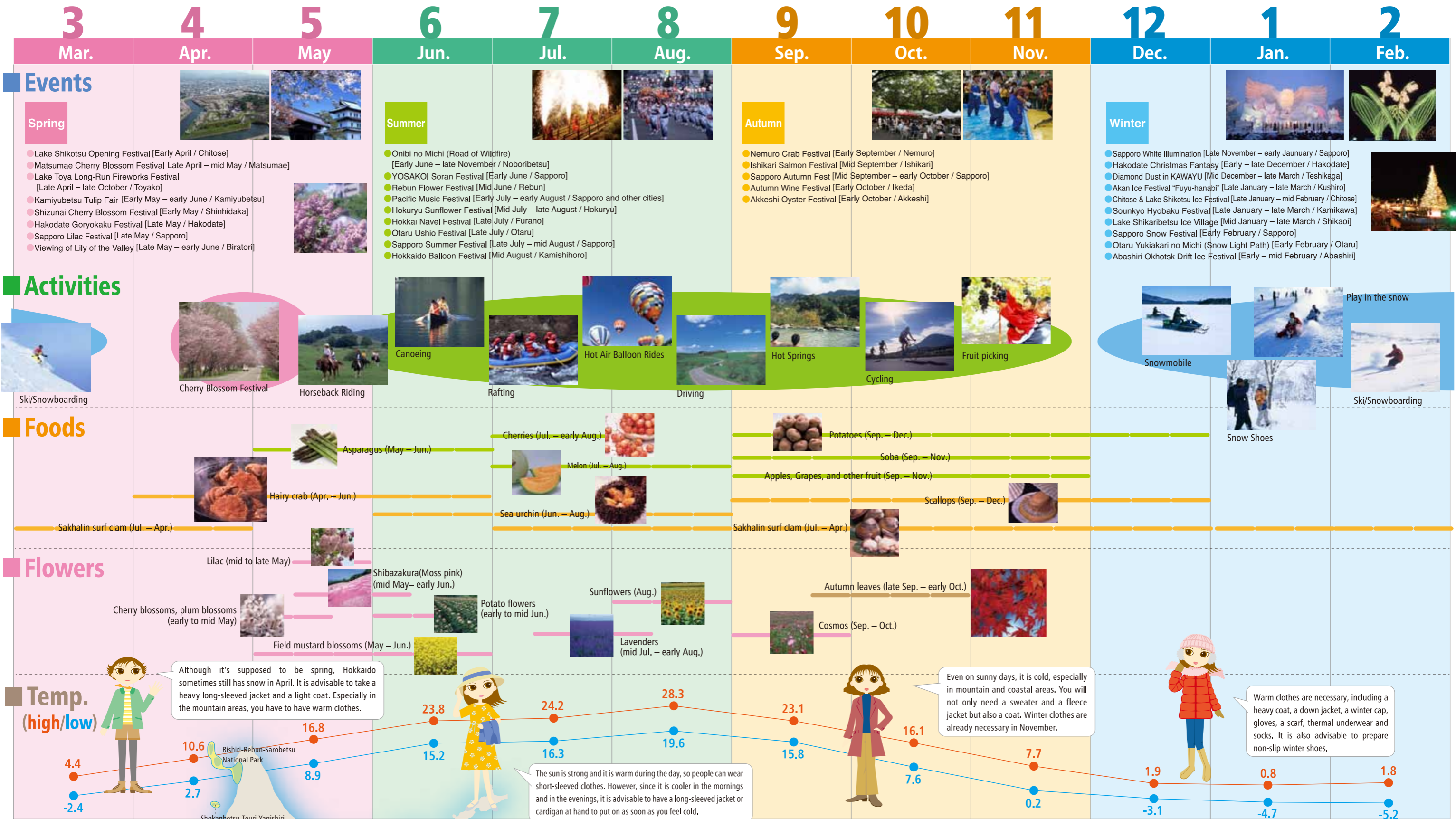


Hokkaido Calendar

Hokkaido has a long winter and a short summer, and is also characterized by cool weather and a low humidity throughout the year. It does not have a rainy season or lingering humid summer heat like the rest of Japan, but has four distinct and very nice seasons. Go and experience its seasonal attractions such as magnificent natural landscapes, events, fresh seasonal gourmet food, etc.



Although it's supposed to be spring, Hokkaido sometimes still has snow in April. It is advisable to take a heavy long-sleeved jacket and a light coat. Especially in the mountain areas, you have to have warm clothes.

The sun is strong and it is warm during the day, so people can wear short-sleeved clothes. However, since it is cooler in the mornings and in the evenings, it is advisable to have a long-sleeved jacket or cardigan at hand to put on as soon as you feel cold.

Even on sunny days, it is cold, especially in mountain and coastal areas. You will not only need a sweater and a fleece jacket but also a coat. Winter clothes are already necessary in November.

Warm clothes are necessary, including a heavy coat, a down jacket, a winter cap, gloves, a scarf, thermal underwear and socks. It is also advisable to prepare non-slip winter shoes.

About Hokkaido

Hokkaido is located in the northernmost region of Japan, 41 to 45 degrees north latitude, almost the same as Rome in Italy and Chicago in the U.S. In northern and eastern Hokkaido, the temperature can drop to below minus 30 degrees Celsius in winter. The total population of Hokkaido is approximately 5.48 million, and the population density is roughly 1/70 km². The people of Hokkaido live in the most spacious environment of Japan.

Hokkaido Gourmets



Access

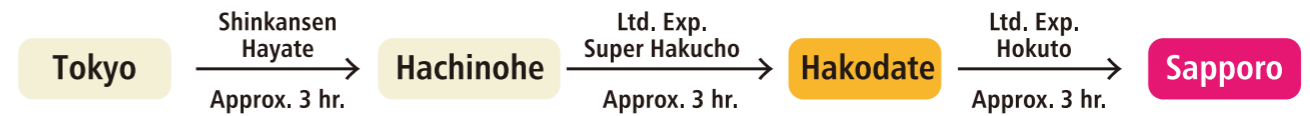


By Train

Direct trains from Honshu to Hokkaido include sleeper limited express trains from Tokyo (Ueno) and Osaka to Sapporo and limited express trains from Hachinohe to Hakodate. Since sleeper limited express trains move while you are asleep, you can use your time effectively during the trip.

Sleeper/limited express trains

Place of departure	Train name	Destination	Time required	Number of services
Ueno	Sleeper Ltd. Exp. Cassiopeia	Sapporo	17 hr. 12 min.	3/week
Ueno	Sleeper Ltd. Exp. Hokutosei	Sapporo	16 hr. 12 min.	1/day
Tokyo	Tohoku Shinkansen ⇄ Ltd. Exp. Super Hakucho	Hakodate	5 hr. 54 min.	8/day
Osaka	Sleeper Ltd. Exp. Twilight Express	Sapporo	22 hr. 02 min.	4/week



Japan Rail Pass

The Japan Rail Pass is available to foreign nationals making a short-term visit to Japan for sightseeing purposes. The pass can be used for all railways in the JR group, all local bus routes operated by JR Bus companies and on the JR West Miyajima Ferry. Some local lines are not included.

	For Ordinary Car	For First Class Car (Green Car)
1 week	28,300 yen (14,150 yen)	37,800 yen (18,900 yen)
2 weeks	45,100 yen (22,550 yen)	61,200 yen (30,600 yen)
3 weeks	57,700 yen (28,850 yen)	79,600 yen (39,800 yen)

● Japan Rail Pass <http://www.japanrailpass.net/>

Hokkaido Rail Pass

The exclusive Hokkaido Rail Pass providing huge savings for foreign tourists to Hokkaido. This pass allows unlimited rides on JR trains in Hokkaido during the valid period. It is also possible to reserve seats on limited express trains for free.

	For Ordinary Car	For First Class Car (Green Car)
3-DAY TICKET	15,000 yen (7,500 yen)	21,500 yen (10,750 yen)
5-DAY TICKET	19,500 yen (9,750 yen)	27,000 yen (13,500 yen)
7-DAY TICKET	22,000 yen (11,000 yen)	30,000 yen (15,000 yen)
FLEXIBLE 4-DAY TICKET	19,500 yen (9,750 yen)	27,000 yen (13,500 yen)

*The Flexible 4-Day Pass allows unlimited rides on any four days within 10 days from the first day of use.
 ● Hokkaido Railway Company <http://www2.jrhokkaido.co.jp/global/>

