

The Handy Unlimited Rides Pass

JR-WEST RAIL PASS

Extensive Regional Tourist Pass & One-way Ticket

Travel Across West Japan
on Trains from Kansai
to Hokuriku, Sanyo,
San'in, and Hakata!



For individuals Online reservation

Online reservations OK

Make reservations online with these sightseeing trains before departing.
(Reservations accepted beginning at 10:00 one month before the departure date)

5489 Reservation and purchasing information on
JR-WEST ONLINE TRAIN RESERVATION!

Regular tickets and special tourist products for Shinkansen, Limited Express, and other trains operated by JR-West are available for purchase from abroad online. After arriving in Japan, you can pick up your purchase at ticket vending machines and JR ticket offices (Midori-no-madoguchi) with a **5489** mark (mark for special tourist products)!

STEP 1 Make reservations and purchases abroad

Confirm product information and applicable areas before making your reservations and purchases online at JR-West's official website!



STEP 2 Pick up in Japan

Pick up your purchase at ticket vending machines and JR ticket offices (Midori-no-madoguchi) with a **5489** mark (mark for special tourist products)!



Details here



For prices and other detailed information, please visit the website. <https://www.westjr.co.jp/global/en/ticket/overview/>

For travel agencies Group travel

	Small groups (8 or more people)	Charter groups	Notes
Discount rate	Conditions subject to change	Conditions subject to change	
Reservation period	9 months – 14 days before	9 months – 2 months before	*Separate conditions specified by sightseeing trains, etc. may apply
Minimum passenger requirement	8 people	90% of seating capacity	
Deposit	300 yen per passenger for 90% of total reserved number	Equivalent to 10% of total fare	
Reservation method	Reserve through a Japanese travel agency (Contact our sales office for details)	Reserve through a Japanese travel agency (Contact our sales office for details)	
Available trains	HANAYOME NOREN, Belles montagnes et mer, La Malle de Bois, etSETOra, SL/DL YAMAGUCHI, marumaru no hanashi, AMETUCHI, Hello Kitty Shinkansen, Hello Kitty HARUKA, Kitara Train, Panda Kuroshio, Umi Yama Musubi, SAKUBI SAKURA, and others	HANAYOME NOREN, Belles montagnes et mer, La Malle de Bois, etSETOra, marumaru no hanashi, AMETUCHI, Umi Yama Musubi, Hello Kitty Shinkansen, Hello Kitty HARUKA, SAKUBI SAKURA *To charter other train services, please contact us for more information.	*Also accepting group reservations for Shinkansen, Limited Express, and ordinary train service. Contact us for more information.

*Conditions for SEA SPICA, the Sagano Romantic Train, and WEST EXPRESS GINGA differ from those listed above. Contact the respective sales office in your country for details.

*The information included within (including prices) is current as of March 16, 2024 and is subject to change.

Supporting travelers in the event of illness
or other travel problems!



Travel Support
by JR-WEST

Available exclusively to JR-West ticket users



For details



*The above content is based on information that will apply from March 16, 2024.

La Malle de Bois

Okayama ⇄ Mihara/Uno/Hinase/Kotohira

Take a journey to remember
on our sightseeing trains

Tour Japan on a JR-West Sightseeing Train

Belles montagnes et mer

Takaoka/Shin-Takaoka/Tonami ⇄ Johana/Himi



AMETUCHI

Tottori ⇄ Izumoshi Yonago ⇄ Izumo-Yokota
Tottori ⇄ Kinosaki-sen



HANAYOME NOREN

Kanazawa ⇄ Wakuraonsen



Sagano Romantic Train

Torokko-Saga ⇄ Torokko-Kameoka



WEST EXPRESS GINGA



Panda Kuroshio

Kyoto/Shin-Osaka ⇄ Wakayama/Shirahama/Shingu



etSETOra Hiroshima ⇄ Onomichi



Hello Kitty Shinkansen Shin-Osaka ⇄ Hakata



SEA SPICA Hiroshima Port ⇄ Mihara Port



Umi Yama Musubi
Kinosaki-sen ⇄ Teramae/Hamasaka/etc.



Hokuriku Shinkansen

Sanyo Shinkansen

Kyushu Shinkansen

*The information included within (including prices) is current as of March 16, 2024 and is subject to change.



Travel by train to get the most out of your trip!

Experience all of the distinctive West Japan sightseeing and character-wrapped trains featuring the unique charms of the different regions!

Experience the tranquility and beauty of the Hokuriku region and savor local cuisine.

Enjoy the beautiful scenery of the Hokuriku area from this "art gallery on rails".

Enjoy a trip through Hagi, Nagato, and Shimonoseki.

Your nostalgic journey begins here.

Enjoy an elegant journey between land and sky.

Begin your journey with a cast of strange yokai characters.

Connecting the regions of North Kinki and displaying its charms.



marumaru no hanashi
Shin-Shimonoseki/Shimonoseki ↔
Nagatoshi/Higashi-Hagi P5



SL/DL YAMAGUCHI
Shin-Yamaguchi ↔ Tsuwano P5



AMETUCHI
Tottori ↔ Izumoshi
Ametuchi (Kisuki Line) Yonago ↔ Izumo-Yokota
Ametuchi (Inaba/Tajima) Tottori ↔ Kinosakionsen P4



Kitaro Train
Yonago ↔ Sakaiminato P4



Umi Yama Musubi
Kinosakionsen ↔ Teramae/Hamasaka/etc. P8

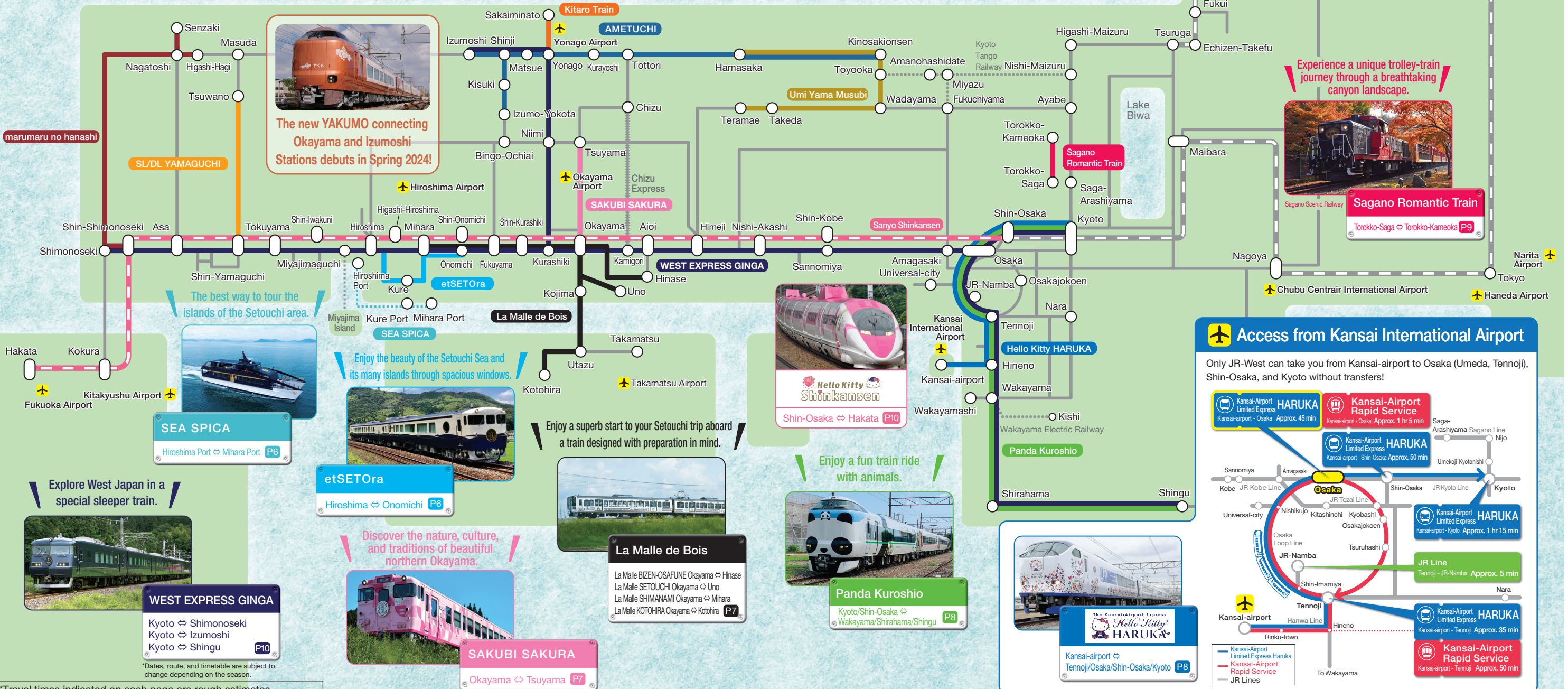
March 16, 2024
Start of Hokuriku Shinkansen service between Kanazawa and Tsuruga Station!



HANAYOME NOREN
Kanazawa ↔ Wakuraonsen P3



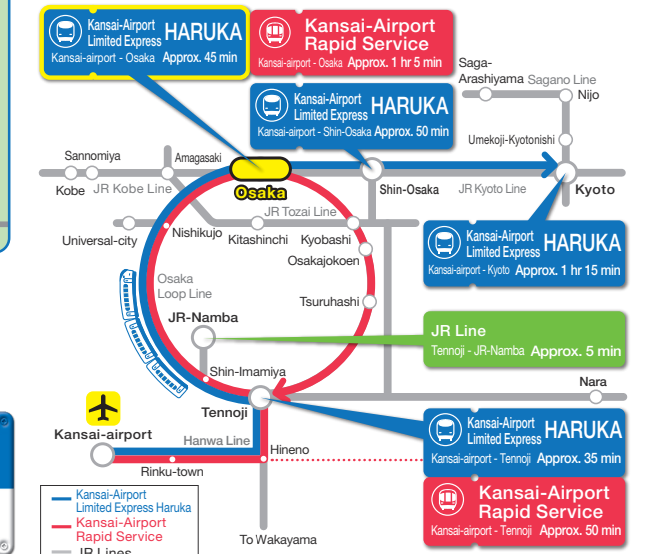
Belles montagnes et mer
Takaoka/Shin-Takaoka/Tonami ↔
Johana/Himi P3



*Travel times indicated on each page are rough estimates.
*The information included within (including prices) is current as of March 16, 2024 and is subject to change.

Access from Kansai International Airport

Only JR-West can take you from Kansai-airport to Osaka (Umeda, Tennoji), Shin-Osaka, and Kyoto without transfers!



Hokuriku Area

Inspired by the traditional crafts of the Hokuriku region. Passengers can also try unique local foods and participate in events.

HANAYOME NOREN

See Website for details!

Themed interior Local cuisine Great views Groups welcome (For travel agencies) See back cover (P11)

Light Japanese-style lunch set

Sweets Set

Drink and Snack Set

[Route] Kanazawa ⇄ Wakuraonsen [Capaity] 52 seats **Reserved seats only**

[Fare] Limited Express reserved seat ticket (regular season): Adult: 1,490 yen / Child: 740 yen (Kanazawa ⇄ Wakuraonsen) *Basic fare ticket is also required.

[Dates] Fridays, Saturdays, Sundays, and holidays (see Website for details)

Timetable *Also stops at Hakui and Nanao. *See Website for list of arrival and departure times

	Kanazawa	Wakuraonsen
No. 1	11:00	→ 12:31
No. 2	14:26	← 12:57
No. 3	15:28	→ 16:40
No. 4	18:27	← 17:07

Access

Tokyo → Hokuriku Shinkansen Approx. 2 hr 30 min → Kanazawa

Osaka → Limited Express (THUNDERBIRD) → Tsuruga → Hokuriku Shinkansen → Kanazawa

Osaka ⇄ Kanazawa Approx. 2 hr 25 min

Rail passes OK

*Additional fees may be required. For more information, please visit us on the web.

Online reservations OK

For details → P11

Seating arrangement

Car No. 2 Capacity: 28 seats

Car No. 1 Capacity: 24 seats

San'in Area

Delivering an incredible experience of the San'in region's unique blend of traditional and modern Japan with "native Japanese" themed trains.

AMETUCHI

See Website for details!

Themed interior Local cuisine Great views Groups welcome (For travel agencies) See back cover (P11)

Ametuchi Bento

San'in Sake and Snack Set

Makunouchi Tatara Bento

Hoshizoramai Sweets Set

Matsue Japanese Sweets Assortment

Un-Nan Sake Tour

Tottori ⇄ Kinosaki-onsen

Ametuchi Bento

[Route] Tottori ⇄ Izumoshi / Yonago ⇄ Izumo-Yokota / Tottori ⇄ Kinosaki-onsen [Capacity] 59 seats **Reserved seats only**

[Fare] Green Car reserved seat ticket: Adult/Child: 1,990 yen (Tottori ⇄ Izumoshi), 1,000 yen (Yonago ⇄ Izumo-Yokota)/(Tottori ⇄ Kinosaki-onsen) *Basic fare ticket is also required.

[Dates] Each route mainly operates on weekends (see Website for details)

Timetable *Information as of January 2024. See Website for latest details

Ametuchi	Tottori	Izumoshi	Ametuchi (Inaba/Tajima)	Tottori	Kinosaki-onsen
9:05	→ 12:37		April-October, 2024	9:00	→ 10:48
17:51	→ 13:51		November 2024-March 2025	14:19	→ 12:27
8:17	→ 11:21	Izumo-Yokota		9:00	→ 10:48
15:27	→ 12:03			17:58	→ 15:58

Access

Kyoto → Osaka → Limited Express (SUPER HAKUTO) Approx. 2 hr 25 min → Tottori

Hakata → San'yō Shinkansen → Okayama → Limited Express (SUPER INABA) Approx. 1 hr 45 min → Tottori

Hakata → San'yō Shinkansen → Okayama → Limited Express (YAKUMO) Approx. 2 hr 15 min → Yonago

Hakata → San'yō Shinkansen → Tottori → Limited Express (YAKUMO) Approx. 2 hr 15 min → Yonago

Rail passes OK

*Additional fees may be required. For more information, please visit us on the web.

Online reservations OK

For details → P11

Seating arrangement

Car No. 1

Car No. 2

Enjoy the beautiful natural scenery along the route of this sightseeing train. Each of the landscapes that pass by each minute is a piece of art.

Belles montagnes et mer

See Website for details!

Themed interior Local cuisine Great views Groups welcome (For travel agencies) See back cover (P11)

Mini Toyama Bay Sushi and Delicacies of Toyama Set

Drink and Snack Set

Drink Tasting Set

[Route] Takaoka/Shin-Takaoka ⇄ Johana / Tonami/Shin-Takaoka/Takaoka ⇄ Himi [Capacity] 39 seats **Reserved seats only**

[Fare] Reserved seat ticket: Adult: 530 yen / Child: 260 yen *Basic fare ticket is also required.

[Dates] Saturdays, Sundays (see Website for details)

Timetable *See Website for list of arrival and departure times. *Belles montagnes et mer No. 1 departs from Tonami Station. No. 4 stops at Takaoka Station.

Saturday service	Takaoka/Shin-Takaoka	Johana	Sunday service	Tonami/Shin-Takaoka/Takaoka	Himi			
No. 51	9:38	9:43	→ 10:22	No. 1	9:45	10:01	10:24	→ 10:55
No. 52	11:29	11:25	→ 10:43	No. 2	×	12:10	12:07	→ 11:06
No. 53	13:08	13:12	→ 13:56	No. 3	×	13:58	14:25	→ 14:59
No. 54	14:59	14:55	→ 14:10	No. 4	×	×	15:48	→ 15:15

*Also stops at Tonami, Fukuno, and Fukumitsu stations. *Also stops at Fushiki and Amaharashi stations.

Access

Tokyo → Hokuriku Shinkansen Approx. 2 hr 45 min → Shin-Takaoka

Osaka → Limited Express (THUNDERBIRD) → Tsuruga → Hokuriku Shinkansen → Shin-Takaoka

Osaka ⇄ Shin-Takaoka Approx. 2 hr 40 min

Rail passes OK

*Additional fees may be required. For more information, please visit us on the web.

Online reservations OK

For details → P11

Seating arrangement

Capacity: 39 seats

1 Ocean side / Tateyama Mountain Range

The train is decorated with six illustrations of characters from the iconic series including Kitaro, Medamaoyaji, and Nezumiotoko.

Kitaro Train

See Website for details!

Themed interior Groups welcome (For travel agencies) See back cover (P11)

Mini Toyama Bay Sushi and Delicacies of Toyama Set

Drink and Snack Set

Drink Tasting Set

[Route] Yonago ⇄ Sakaiminato **Non-reserved seats only**

[Fare] Basic fare ticket only [Dates] Every day

[Timetable] 1-2 trains/hour

*Character train schedules may vary depending on the day.

Rail passes OK

*Additional fees may be required. For more information, please visit us on the web.

Seating arrangement

Capacity: 39 seats

1 Ocean side / Tateyama Mountain Range

San'in Area

Enjoy the different designs inside the train, with Car No. 1's theme "The Japan that the West admired" (Japanese style) and Car No. 2's theme "The West that Japan admired" (Western style).

marumaru no hanashi

Themed interior

Local cuisine

Great views

Groups welcome
(For travel agencies)
See back cover (P11)

[Capacity] 60 seats **Reserved seats only**

Due to the disaster that occurred at the end of June 2023, train operations have been suspended on some sections of the San'in Line, and the marumaru no hanashi (San'in Line) has also been suspended for the time being. Please contact us for group private train service.

Seating arrangement

Car No. 1

Car No. 2

Enjoy your trip in the retro train interiors.

SL/DL YAMAGUCHI

Themed interior

Groups welcome
(For travel agencies)
See back cover (P11)

[Route] Shin-Yamaguchi ⇄ Tsuwano [Capacity] 245 seats **Reserved seats only** [Fare] Reserved seat ticket: Adult: 1,680 yen, Child: 840 yen / Green Car reserved seat ticket: Adult/Child: 2,500 yen *Basic fare ticket is also required.

[Dates] Visit the official website for service dates and time, trains in operation, and more.

Access

Rail passes OK

Online reservations OK

Sanyo Area

This train will allow you to experience the many charms of the Setouchi area. Sit back and enjoy the beauty of the Seto Inland Sea's many islands as you savor a range of alcoholic beverages, snacks, and sweets in your train car.

etSETOra

Themed interior

Local cuisine

Great views

Groups welcome
(For travel agencies)
See back cover (P11)

[Route] Hiroshima ⇄ Onomichi [Capacity] 40 seats **Reserved seats only**

[Fare] Green Car reserved seat ticket: Adult/Child: 1,000 yen *Basic fare ticket is also required.

[Dates] Mondays, Fridays, Saturdays, Sundays, and holidays (excluding New Year's holiday) See the website for details

Timetable

Access

Rail passes OK

Online reservations OK

Seating arrangement

Car No. 1

Car No. 2

The best way to tour the islands of the Setouchi area is aboard this high-speed sightseeing cruiser.

SEA SPICA

Themed interior

Great views

Groups welcome
(For travel agencies)
See back cover (P11)

[Route] Hiroshima Port ⇄ Mihara Port [Capacity] 90 seats **Reserved seats only**

[Fare] Varies by itinerary.

[Dates] Mondays, Fridays, Saturdays, Sundays, and holidays (see Website for details)

Timetable

Setouchi Shimatabi Line

etSETOra and SEA SPICA Sightseeing Route

etSETOra

Hiroshima Lv: 9:32

Mihara Ar: 12:17

Mihara Port Lv: 13:25

Ohkunoshima Approx. 30 min

Townscape of Mitarai Approx. 60 min

Kure Port Ar: 17:25

Hiroshima Port Ar: 18:00

5 *The information included within (including prices) is current as of March 16, 2024 and is subject to change. *Travel times are estimates. *Operation days vary for each train. Be sure to note the operation days for each train.

6 *Limited Express reserved seat tickets, Green reserved seat tickets, and other reserved seat tickets can be purchased from JR-West Ticket Offices or major Japanese travel companies up to 1 month before the travel date. *For more information on available rail passes, please visit <https://www.westjr.co.jp/global/en/>.

The interior is decorated with artworks and equipped with bicycle spaces.

Themed interior

Great views

Groups welcome
(For travel agencies)
See back cover (P11)

La Malle de Bois



La Malle de Bois



[Route] Okayama ⇄ Mihara, Uno, Hinase, Kotohira [Capacity] 51 seats **Reserved seats only**

[Fare] Green Car reserved seat ticket [Okayama ⇄ Mihara] Adult/Child: 1,000 yen, [Okayama ⇄ Uno] Adult/Child: 780 yen, [Okayama ⇄ Hinase] Adult/Child: 780 yen, [Okayama ⇄ Kotohira] Adult/Child: 1,000 yen *Basic fare ticket is also required.

[Dates] Saturdays, Sundays, and holidays (see Website for details)

Timetable

*Some stops not listed

La Malle SETOUCHI			La Malle BIZEN-OSAFUNE		
Okayama	10:11 → 11:12 17:24 ← 16:18	Uno	Okayama	9:40 → 10:52 15:24 ← 14:22	Hinase
La Malle SHIMANAMI			La Malle KOTOHIRA		
Okayama	10:19 → 12:03 17:11 ← 15:20	Mihara	Okayama	10:11 → 12:00 17:24 ← 15:20	Kotohira

Access



Rail passes OK

*Additional fees may be required.
For more information, please visit us on the web.

Online reservations OK

For details → P11



Enjoy special dishes and attentive hospitality on a guided trip to northern Okayama, home to the three famous hot springs of Mimasaka and breathtaking cherry blossom-viewing locations.

Themed interior

Local cuisine

Great views

Groups welcome
(For travel agencies)
See back cover (P11)



SAKUBI SAKURA



[Route] Okayama ⇄ Tsuyama [Capacity] 40 seats (One-car train) **Reserved seats only**

[Fare] Reserved seat ticket: Adult: 530 yen, Child: 260 yen *Basic fare ticket is also required.

[Dates] One round trip per day, mainly on Saturdays, Sundays, and holidays

Timetable

No. 2	Okayama	Tsuyama	No. 1	Tsuyama	Okayama
Okayama ↓ Tsuyama	10:55	12:27	Tsuyama ↓ Okayama	12:56	14:30

Access



Rail passes OK

*Additional fees may be required.
For more information, please visit us on the web.

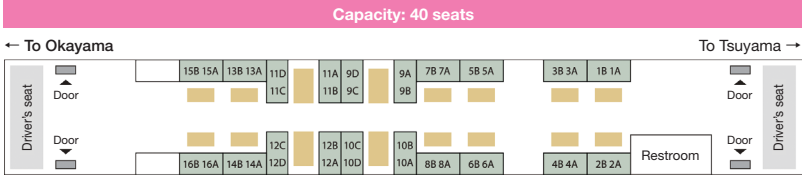
Online reservations OK

For details → P11



Seating arrangement

Capacity: 40 seats




Rail passes OK

*Additional fees may be required.
For more information, please visit us on the web.

Online reservations OK

For details → P11



This character-wrapped train was designed by JR-West in collaboration with the Adventure World theme park in Wakayama.

Themed interior

Groups welcome
(For travel agencies)
See back cover (P11)

Panda Kuroshio



Sustainable Smile Train

Smile Adventure Train



[Route] Kyoto/Shin-Osaka ⇄ Wakayama/Shirahama/Shingu

[Capacity] 360 seats *Varies by train **Reserved seating only**

[Fare] Limited Express reserved seat ticket (regular season): Adult: 2,730 yen / Child: 1,360 yen (Shin-Osaka – Shirahama)

[Dates] Every day *Kuroshio No. 1, No. 4, No. 25, and No. 26 are Panda Kuroshio trains every day.

Timetable

*Timetable for Saturdays, Sundays, and holidays

	Shin-Osaka	Osaka	Wakayama	Shirahama	Shingu
No. 1	7:34 →	7:40 →	8:48 →	10:12 →	11:59
No. 25	18:43 →	18:48 →	19:52		
	Shingu	Shirahama	Wakayama	Osaka	Shin-Osaka
No. 4			6:05 →	7:13 →	7:19
No. 26	13:29 →	15:26 →	16:50 →	17:46 →	17:51

Rail passes OK

*Additional fees may be required.
For more information, please visit us on the web.

Online reservations OK

For details → P11

Experience the modern Japanese flair of Hello Kitty on your way from Kansai International Airport to Kyoto.

Themed interior

Groups welcome
(For travel agencies)
See back cover (P11)

Hello Kitty HARUKA



The Kansai-Airport Express
Hello Kitty HARUKA



[Route] Kansai-airport ⇄ Tennoji/Osaka/Shin-Osaka/Kyoto

[Capacity] 248 - 384 seats *Varies by train **Reserved seats are available**

[Fare] Limited Express reserved seat ticket (regular season): Adult: 1,730 yen / Child: 860 yen (Kansai-airport ⇄ Osaka/Shin-Osaka/Kyoto) *Basic fare ticket is also required.

[Dates] Every day *Some Limited Express HARUKA are not wrapped with Hello Kitty decorations.

Rail passes OK

*Additional fees may be required.
For more information, please visit us on the web.

Online reservations OK


For details → P11

The Umi Yama Musubi is designed to resemble a Japanese treasure box, ensuring passengers “treasure” their trip aboard this train connecting the North Kinki region.


Themed interior


Groups welcome
(For travel agencies)
See back cover (P11)

Umi Yama Musubi



うみやまめすび





[Route] Kinosakionsen ⇄ Teramae/Hamasaka/etc. (Varies by season)

[Capacity] 41 seats **Non-reserved seats only**

[Fare] Basic fare ticket only

[Dates/Timetable] Varies by season.

Rail passes OK

*Additional fees may be required.
For more information, please visit us on the web.

Online reservations OK

For details → P11

Enjoy the landscapes and their seasonal differences of Kyoto's Sagano and Hozukyo areas on this 25 minutes fun-filled train adventure.

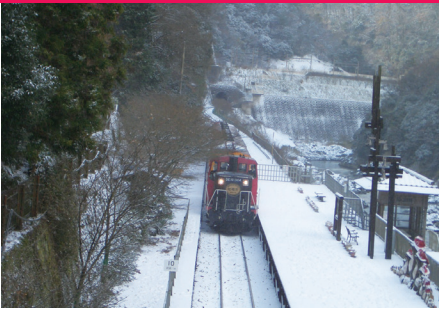
Sagano Romantic Train

Sagano Scenic Railway Co.,Ltd.

See Website for details!



Groups welcome (For travel agencies) See back cover (P11)



[Route] Torokko-Saga ⇄ Torokko-Kameoka
[Capacity] 304 seats **Reserved seats only**
[Fare] (incl. reserved seat fee and flat fare for all sections) Adult: 880 yen, Child: 440 yen (see Website for details)

Service Overview

[Operation] 8 roundtrips / day (regular schedule)
*Unscheduled trips may also occur.
[Time] Approx. 25 min (Torokko-Saga ⇄ Torokko-Kameoka) (See Website for timetable)

Access



Seating arrangement		Car No. 1 Capacity: 56 seats																Car No. 2 and 4 Capacity: 64 seats																		Car No. 3 and 5 Capacity: 60 seats															
		← Torokko-Kameoka																																		Torokko-Saga →															
Driver's seat		A D A D A D A D A D A D A D A D														↑ Entrance/Exit	A D A D A D A D A D A D A D A D A D																↑ Entrance/Exit	A D A D A D A D A D A D A D A D														↑ Entrance/Exit			
		2 4 6 8 10 12 14 16															2 4 6 8 10 12 14 16																	2 4 6 8 10 12 14 16																	
		B C B C B C B C B C B C B C B C															B C B C B C B C B C B C B C B C																	B C B C B C B C B C B C B C B C																	
		1 3 5 7 9 11 13 15															1 3 5 7 9 11 13 15																	1 3 5 7 9 11 13 15																	
		B C B C B C B C B C B C B C B C																B C B C B C B C B C B C B C B C																		B C B C B C B C B C B C B C B C															
		A D A D A D A D A D A D A D A D																A D A D A D A D A D A D A D A D																		A D A D A D A D A D A D A D A D															
		A D A D A D A D A D A D A D A D																A D A D A D A D A D A D A D A D																		A D A D A D A D A D A D A D A D															
		A D A D A D A D A D A D A D A D																A D A D A D A D A D A D A D A D																		A D A D A D A D A D A D A D A D															

*Seats A and D offer the best views.

*Car No. 5 (Rich Car) is an open-air traincar with no windows.

This Hello Kitty Shinkansen complete with a cute pink decorative ribbon design was created through a collaboration between Hello Kitty and the Sanyo Shinkansen.

See Website for details!



Groups welcome (For travel agencies) See back cover (P11)

Hello Kitty Shinkansen



[Route] Shin-Osaka ⇄ Hakata **Reserved seats are available**

[Fare] Shinkansen non-reserved limited express ticket: Adult: 4,960 yen / Child: 2,480 yen (Shin-Osaka ⇄ Hakata) *Basic fare ticket is also required.

[Dates] Every day [Capacity] 479 seats *Service is not offered on some days due to inspections or other factors.

Timetable

	Hakata	Shin-Osaka
KODAMA No. 842	7:04	→ 11:25
KODAMA No. 849	15:51	← 11:37

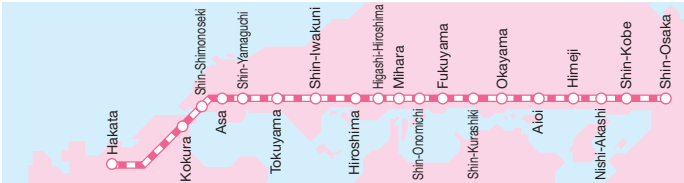
*See Website for list of arrival and departure times

Rail passes OK

*Additional fees may be required. For more information, please visit us on the web.

Online reservations OK

For details → P11



Buy charming souvenirs and experience traditional arts along the tracks on this hospitality-focused train service with many offerings both inside and outside the train.

WEST EXPRESS GINGA



*Dates, route, and timetable are subject to change depending on the season. **Reserved seats only**

Seating arrangement

Car No. 1 Green Car reserved seating (First Class) Capacity: 8 seats	Car No. 2 Ordinary car reserved seating (Couchette, reclining seats) Capacity: 26 seats *Some women's seats	Car No. 3 Ordinary car reserved seating (Reclining seats, family cabins) Capacity: 28 seats
Car No. 4 Free Space	Car No. 5 Ordinary car reserved seating (Couchette) Capacity: 18 seats	Car No. 6 Green private room (Premier Room) Capacity: [Day] 13 seats, [Night] 9 seats