

# Mojiko



Thanks to its history as a prosperous international trade port since the late 19th century, it has become one of the leading tourist spots in Fukuoka Prefecture.



(Map)



## Kanmon Strait and Shimonoseki

A boat takes you to Shimonoseki, the other side of the strait, in 5 minutes. Walking through the undersea tunnel is also popular.



## Mojiko Station

A landmark of the Mojiko area, built in 1914 and designated as an Important National Cultural Property.



## Kyushu Railway History Museum, Kanmon Strait Museum

A museum with a diverse collection related to railways, including a miniature train ride, and a museum where visitors can enjoy everything about the Kanmon Strait.

## Baked Curry and Craft Beer



## Mojiko Retro Observation Deck

Magnificent panoramic views of the Kanmon Strait and the cityscape can be observed.

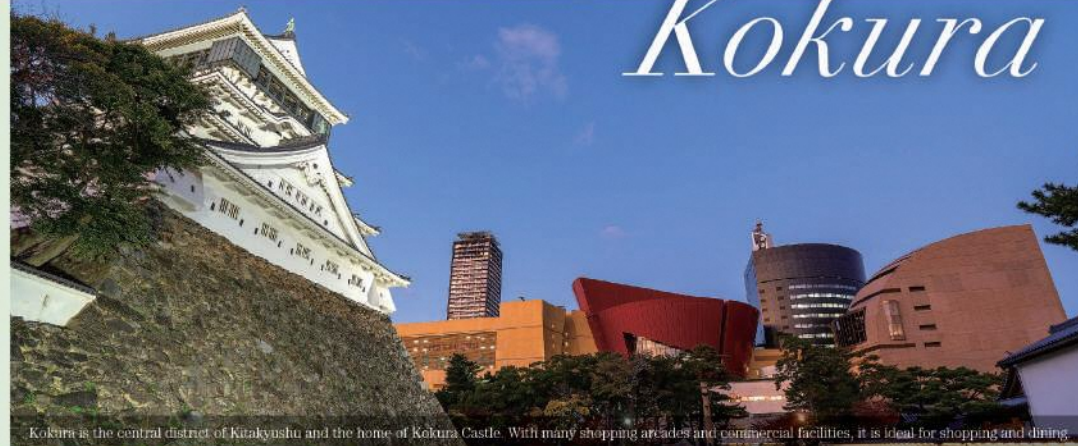


## Shiranoe Botanical Gardens

A huge botanical garden with flowers that bloom in every season.



# Kokura



Kokura is the central district of Kitakyushu and the home of Kokura Castle. With many shopping arcades and commercial facilities, it is ideal for shopping and dining.



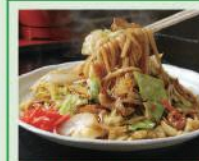
## Kokura Castle

Built in 1602. Adjacent are Kokura Castle Japanese Garden, which is a reconstruction of a samurai mansion and a lord's garden from the Edo period, and Shiro Terrace, where souvenirs can be bought.



## Tanga Market

This 100-year-old market, well-known as the "kitchen of Kitakyushu," features 110 stores.



## Kokura Original Yakiudon (Fried udon)

## Kitakyushu Manga Museum

Exhibitions on popular comics and animation are held regularly.



## Kitakyushu Museum of Natural History & Human History

A museum featuring world-class exhibitions of large dinosaur skeletons.



## Kitakyushu Municipal Museum of Art

Nicknamed the "Binoculars on the Hill", it offers magnificent views from its café.



## Wakamatsu Bund

A street with an atmosphere left over from the area's history as a prosperous coal port 100 years ago.



## Hibikinada Green Park

The park has many fun things to enjoy including a huge rose garden, a small zoo with kangaroos and ponies you can pet, and the world's longest swing set.

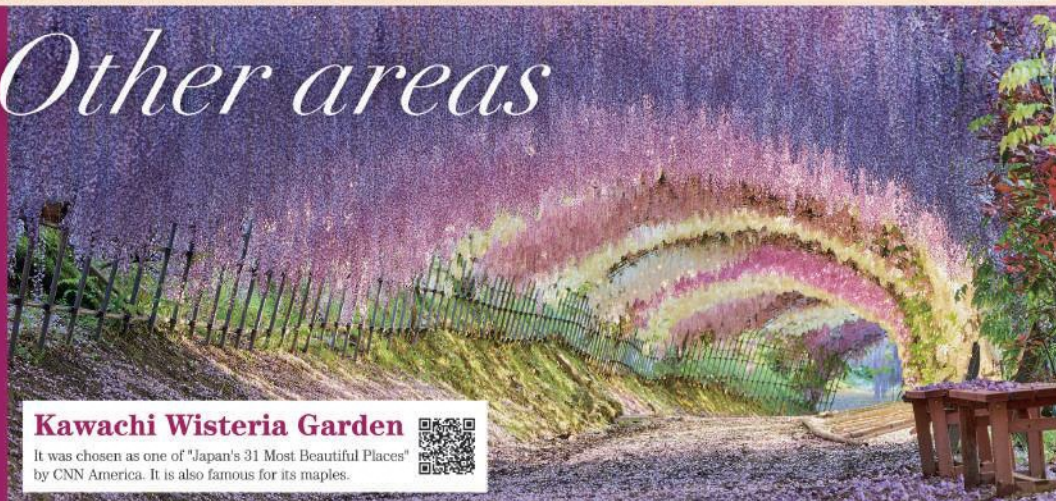


## Hiraodai Limestone Plateau

One of Japan's three major karst formations, featuring fun activities like caving, trekking, and camping.



# Other areas



## Kawachi Wisteria Garden

It was chosen as one of "Japan's 31 Most Beautiful Places" by CNN America. It is also famous for its maples.

