

Airport Luggage Delivery Service

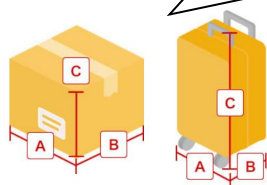
Send your luggage after arriving in Japan (Arrival)



This service is able to send your luggage from the airport to designated place.

A + B + C =

Dimensions of Luggage



- All data is as of November 2024.
- For more detail, please see below.

<https://www.jalabc.com/en/hands-freetravel/airport-baggage-delivery/from-the-airport.html>

Narita International Airport / Haneda Airport

destination/Size	120	140	160
Hokkaido	¥ 2,400	¥2,710	¥3,030
Northern Tohoku	¥ 2,060	¥2,310	¥2,630
Southern Tohoku			
Kanto/Koshinetsu	¥ 1,950	¥2,190	¥2,510
Tokai/Hokuriku			
Kansai	¥ 2,060	¥2,310	¥2,630
Chugoku	¥ 2,170	¥2,450	¥2,770
Shikoku			
Kyushu	¥ 2,400	¥2,710	¥3,030
Okinawa	¥ 3,390	¥4,030	¥4,680

Kansai International Airport

destination/Size	120	140	160
Hokkaido	¥ 3,050	¥3,280	¥3,510
Northern Tohoku	¥ 2,600	¥2,840	¥3,070
Southern Tohoku	¥ 2,500	¥2,730	¥2,960
Kanto/Koshinetsu	¥ 2,390	¥2,620	¥2,840
Tokai/Hokuriku			
Kansai	¥ 2,270	¥2,520	¥2,730
Chugoku			
Shikoku			
Kyushu	¥ 2,390	¥2,620	¥2,840
Okinawa	¥ 3,700	¥4,270	¥4,820

Chubu Centrair International Airport

destination/Size	120	140	160
Hokkaido	¥ 2,720	¥2,970	¥3,180
Northern Tohoku	¥ 2,400	¥2,630	¥2,860
Southern Tohoku	¥ 2,290	¥2,520	¥2,740
Kanto/Koshinetsu			
Tokai/Hokuriku	¥ 2,170	¥2,420	¥2,630
Kansai			
Chugoku	¥ 2,290	¥2,520	¥2,740
Shikoku			
Kyushu	¥ 2,400	¥2,630	¥2,860
Okinawa	¥ 3,600	¥4,170	¥4,720

Airport Luggage Delivery Service

**Send your luggage
to the airport
(Departure)**



<<Reservation required>>

We will pick up your luggage at your appointed location (hotels, accommodations etc.) and transport it to the Airport in Japan.

- All data is as of November 2024.
- For more detail, please see below.
<https://www.jalabc.com/en/hands-freetravel/airport-baggage-delivery/to-the-airport.html>

**Narita
Internatio
nal Airport
/Haneda
Airport
Terminal3**

destination/Size	120	140	160
Hokkaido	¥ 3,130	¥3,470	¥3,790
Northern Tohoku	¥ 2,730	¥3,070	¥3,390
Southern Tohoku			
Kanto/Koshinetsu	¥ 2,610	¥2,950	¥3,270
Tokai/Hokuriku			
Kansai	¥ 2,730	¥3,070	¥3,390
Chugoku	¥ 2,870	¥3,210	¥3,530
Shikoku			
Kyushu	¥ 3,130	¥3,470	¥3,790
Okinawa	¥ 4,120	¥4,790	¥5,440

**Kansai
Internatio
nal Airport**

destination/Size	120	140	160
Hokkaido	¥ 3,590	¥3,930	¥4,250
Northern Tohoku	¥ 3,000	¥3,340	¥3,660
Southern Tohoku	¥ 2,870	¥3,210	¥3,530
Kanto/Koshinetsu	¥ 2,730	¥3,070	¥3,390
Tokai/Hokuriku			
Kansai	¥ 2,610	¥2,950	¥3,270
Chugoku			
Shikoku			
Kyushu	¥ 2,730	¥3,070	¥3,390
Okinawa	¥ 4,120	¥4,790	¥5,440

**Chubu
Centrair
Internatio
nal Airport**

destination/Size	120	140	160
Hokkaido	¥ 3,280	¥3,620	¥3,940
Northern Tohoku	¥ 2,870	¥3,210	¥3,530
Southern Tohoku	¥ 2,730	¥3,070	¥3,390
Kanto/Koshinetsu			
Tokai/Hokuriku	¥ 2,610	¥2,950	¥3,270
Kansai			
Chugoku	¥ 2,730	¥3,070	¥3,390
Shikoku			
Kyushu	¥ 2,870	¥3,210	¥3,530
Okinawa	¥ 4,210	¥4,790	¥5,440

Mobile Service

SIM Cards in JAPAN



Unlimited Data SIM Card

Plan	Price
7 days	4,500 JPY
15 days	6,000 JPY
30 days	7,000 JPY

* The service we provide is different depending on the counter.

Mobile WiFi Rental in JAPAN



Data communication fee

1,313 JPY per day

*tax included

*Rental Fee: None

Translation Device Rental



Rental Fee

814 JPY per day

*tax included

* All data is as of September 2022.

Luggage Storage Service

JAL ABC will store any luggage that you won't be needing during your stay in Japan at one of our counters until you return to head home.

Small
(A4 size
envelope etc.)



Medium
(Suitcases, Golf
bags, etc.)



Large
(Ski/Snowboards
etc.)



Airport	Storage Charge (per day)		
	Small	Medium	Large
Narita	400JPY	600JPY	950JPY
Haneda	500JPY	700JPY	1,100JPY
Kansai	500JPY	750JPY	1,200JPY
Chubu	400JPY	600JPY	950JPY

- The prices are different depending on the counter. In addition, luggage storage times are calculated by calendar day (not by hours).

* All data is as of November 2024.

Selling Packing Material

We sell 4 sizes of carton box and Fragile Container. Each size and price are as follows.

Carton Box



Container
for Fragile
Articles



<outside>

<inside>



Type	Size (mm)	Price (per piece)	Purchase counter
Carton Box	398×218×177	310JPY	Narita, Haneda (terminal3), Chubu, Kansai Airport
	448×290×266	410JPY	
	548×318×327	460JPY	
	648×413×411	590JPY	
Container for Fragile	650×400×460	3,300JPY	Haneda (terminal3), Chubu, Kansai Airport *Departure Lobby ONLY

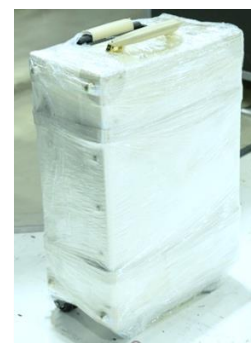
* All data is as of November 2024.

Baggage Wrapping Service

You can wrap your luggage to protect water and scratches etc.

*Please note that this service is at the JALABC Departure counter located in Narita International Airport Terminal 2 ONLY.

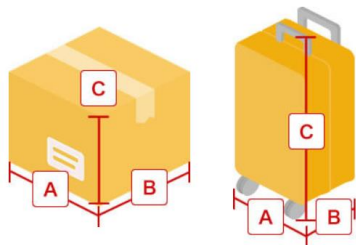
Service Counter	Size	Wrapping Charge (per piece)
Narita International Airport (Terminal2) and Haneda Airport (Terminal 3) *Departure Lobby	Medium*1	1,500JPY
	Large*2	2,500JPY



*1 Medium size : The Three dimensions of the luggage are within 160 cm.

*2 Large size: The Three dimensions of the luggage are within 240 cm.

(The maximum length of one side is within 200 cm.)



$$A + B + C = \text{Dimensions of Luggage}$$

* All data is as of November 2024.