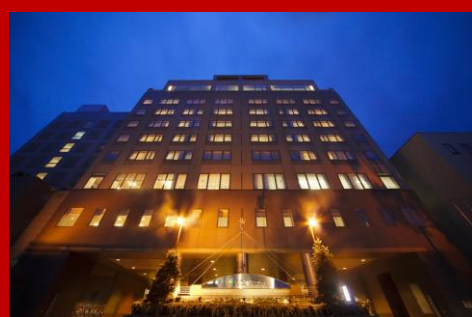




The “North” wing with the Japan Alps as a backdrop. The” East” wing ,where one enjoys Unfailing hospitality. And the new “South” wing opened in April 2003,13 story structure that stands in harmony with the surrounding natural scenery.The Hida Hotel Plaza stands a Takayama landmark.

This is the birth of the Resort hotel of 21st century, featuring the comfort of a city hotel along with all the care and attention to detail for which the Japanese are famous. Staying here brings an even greater touch of class to your travel – Come satisfy yourself at this “Landmark Resort.”

2-60,Hanaoka-cho,Takayama-shi,Gifu,JAPAN 506-0009
 TEL 81+577-33-4600 FAX 81+577-33-4602
 ▶http://www.hida-hotelp Plaza.co.jp/english/index.html
 ▶E-mail inbound@hida-hotelp Plaza.co.jp



North wing



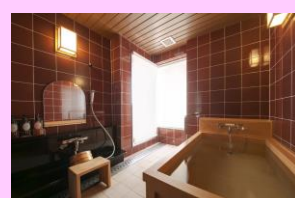
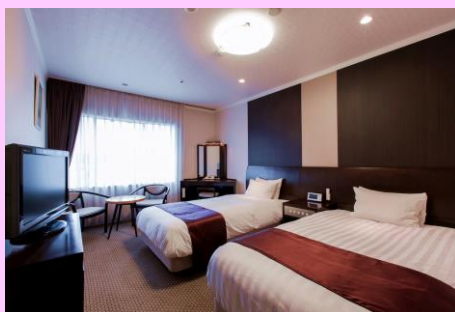
Entrance lobby



Souvenir shop “Hida-kouji”

■ East-Wing[Renovation on 2010]

- ▶ Japanese-style room
 - with twin bed on tatami-mats room (with Hida-furniture) 14Rooms [abt.50 ㎡]
 - Tatami-mats room 4 Rooms [abt.50 ㎡]
 - Deluxe Japanese-style room with Hinoki-bathtub 2 Rooms [abt.60 ㎡]
 - Japanese-style room as Universal-style (with Ostomate) 2 Rooms[abt.60 ㎡]
 - ▶ Western-style room
 - Twin-room 59Rooms [abt.27~ ㎡]
 - Single-room 5 Rooms [abt.13 ㎡]
 - Jr suite-room 5 Room [abt.40 ㎡]
 - Design rooms 3 Room with Hida-furniture called Oak [abt.30 ㎡]
- 92rooms(capacity:249guests)



■ North-Wing [Renovation on 2010]

▶ Japanese-style room

tatami-mats room 28Rooms [abt.50 m²]

▶ Western-style room

Twin-room 11Rooms [abt.31~ m²]

Wide Single-room 11 Rooms [abt.20 m²]

50rooms(capacity:205guests)



Enjoy wearing the separated Yukata called "Jinbei" in "ALL WINGS" ,,,,anywhere!!



■ South-Wing [open on 2003]

▶ Japanese-style room with

twin bed on tatami-mats room 12Rooms [abt.50~m²]

Japanese-style room

tatami-mats room 18Rooms[abt.50~m²]

Japanese-style room

twin bed on tatami-mats room

as Universal style 6 Rooms {abt.70 m²}



▶ Western-style room

Delux Twin-room (Hollywood style)

12Rooms[abt.31 m²]

Design Twin-rooms with Hida-furniture

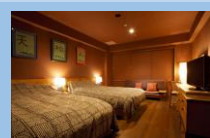
4 kinds of rooms[abt.31 m²]

Twin-room 8Rooms [abt.27 m²]

Wide Single-room 20 Rooms [abt.20 m²]

Single room 4 Rooms[abt.13 m²]

80rooms(capacity:284guests)



Facility Information

- 222 rooms (capacity:738 guests)
- Japanese Restaurant : Takumi-Chaya,Hana-Chaya
- Western-Restaurant : Bonjour
- Chinese-Restaurant : RaiRai-Hanten
- Banquet Room(11 rooms in total)
- Souvenir Shop : Hida-Kouji
- Coffee Shop(Café lounge) : Pico
- Japanese-Bar : Shabu-tei
- Swimming pool
- Parking-Area(Capacity:60 vehicles)

Large bathroom on basement floor was renewed on March 2008 with Edo-Age taste :Ukiyo-Furo



Here is TAKAYAMA's **NATURAL HOT SPRING** "HITEN no YU".
Please enjoy two kinds of public big bathes and relax your time!



和



洋



中

Enjoy a "Hida-pork"(one kind of Gifu-pork)

Enjoy French cuisine

Enjoy Modern Chinese

Enjoy Japanese dishes in an elegant atmosphere, and French cuisine employing Hida's seasonal Ingredients.
We provide authentic Chinese dishes using Hida's vegetables and own edible wild plants. As well as delicious food, we also offer the remarkable menu of specialty shop.

Café shop & lounge
"PICO"

French restaurant
"BONJOUR"

Japanese restaurant
"HANA-CHAYA"

Japanese Bar as "IZAKAYA"
"SHABU-TEI"



ひだホテルプラザ
認定証

旅行業が選ぶ
人気温泉旅館ホテル250選
The top 250 Ryokans in Japan's hot spring resorts
selected by the travel industry professionals.
2020年度



星のマークの評價がトップランクの
快適・安全・安心の証です
The awarded mark assures of the Japan's
top-ranking hospitality and safety.

主催 (株) 観光経済新聞社

Free Wi-fi in ALL Wings

More good information for you!!

About hotel location ;

*abt 5 minutes on foot from Takayama JR and Bus station.

*You can walk to morning market, old privates house, Higashiyama-walkingcourse and so on.

About our hotel ;

* Our hotel meets the earthquakes resistance standards in Japan
& has some private electric power generations for all GUEST.

* We are selected from « Onsen-hotel 250 elections awards in Japan <five stars>

HIDA TAKAYAMA SIGHTSEEING SPOTS

Depart from Hida Hotel Plaza

< on foot >

- 12 min. Higashiyama Temple Area
- 3 min. Karakuri Museum
- 5 min. Festival Floats Exhibition Hall
- 10 min. Takayama Museum of History and Art
- 15 min. Old Private Houses
- 15 min. Takayama Jinya / Morning Market
- 3 min. Miyagawa Morning Market
- 7 min. Hida Katsunaji Temple
- 3 min. Hida Hotel Plaza

< by car >

- 15 min. Hida Takayama Festival Forest
- 10 min. Hida Folk Village
- 10 min. Hida Takayama Crafts Experience Center

- Legend**
- ★ Tourist Facilities
 - Ⓜ Government & Other Public Offices
 - P Car Parks
 - ♿ Public Toilets
 - 🏦 Banks
 - ℹ Tourist Information Offices
 - 🏪 Convenience Stores
 - 🛒 Shopping Centers
 - 🏪 Drugstores
 - 📬 Post Offices
 - 🚓 Police Station & Police Box
 - 🏪 Other Shops & Facilities



International Tourist Hotel
Hida Hotel Plaza
 2-60 HANAOKA-CHO, TAKAYAMA CITY, GIFU PREF. 506-0009 PHONE 0577-33-4600