

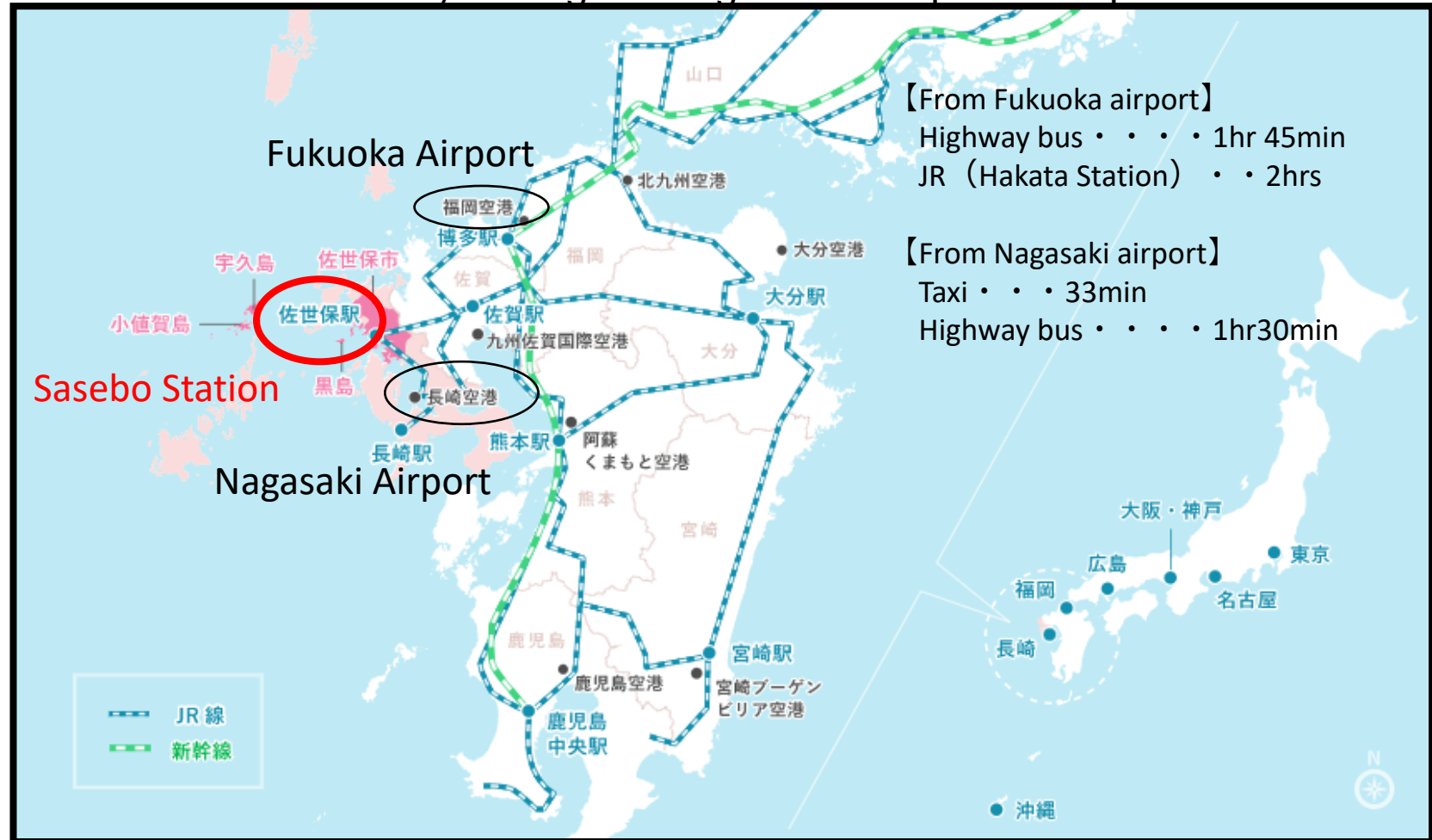
Tourism information of Sasebo city, Nagasaki

The overview of Sasebo city

Sasebo City is in the northern part of Nagasaki Prefecture and is a city surrounded by great nature, like Saikai National Park "Kujukushima".

Here, Sasebo has a history to be developed as a military port of the former Japan Navy, and is now an international port city with a US Navy base.

It is also known as a tourist city having the largest theme park in Japan "Huis Ten Bosch".



Huis Ten Bosch

Huis Ten Bosch



The overview of the contents

It's a stay-type resort and the theme park where faces beautiful Omura Bay and having lovely blooming flowers in each season. The canal surrounding the heavy brick cityscape of the park gives you peace of mind and healing.



Basic information

- Contact information : Huis Ten Bosch
- Website : <https://www.huistenbosch.co.jp/>
- TEL : + 8 1 - 5 7 0 - 0 6 4 - 1 1 0
- Available Languages : ☒ENG ☒CHN ☒KOR

Preventive measures for the new coronavirus

- Infection control of staffs / the facility
 - ☒Body temperature check ☒Wearing mask ☒Disinfection ☒ventilation
- Infection control of guests
 - ☒Body temperature check ☒Wearing mask ☒Keeping their contact info

Address

Huis Ten Bosch town Sasebo city
Nagasaki

Access

<By car> 20min from Sasebo station
<By JR> 5min walk from 「HuisTen Bosch station」

Available languages

☒ENG ☒CHN ☒KOR

Kujukushima

The most beautiful bay in the world “Kujukushima”



The overview of the contents

Kujukushima, which extends to the westernmost tip of mainland Japan, is a scenic spot consisting of the intricate ria coast and 208 large and small islands. "Kujyuku" means "99" in Japanese, but in this case it means not simply mentioning the number but means "innumerable", and it has 208 islands. Only four of them are manned islands and almost the entire area was designated as Saikai National Park in 1955.

Because here is the most densely populated island in Japan, you can find various marine life, that live in the sea with rich nutrients from the deep green forests and the lands. The delicate atmosphere that changes with each season or time gives you impressions that you will never get tired, even if you visit many times there.

● Kujukushima : <https://www.sasebo99.com/feature/kujukushima/about>

Kujukushima Tourist Park



The overview of the contents

From the wide grass open hill "View Hill" of approximately 4.7 hectares, you can overlook the large panorama of Kujukushima and would be impressed by its incredible landscape.

Basic information

- Contact information : Sasebo tourism convention association
- Opening : 9:00 ~18:00 (Weekdays)
- Website : <https://www.sasebo99.com/>
- Email address : sasebo-sales@sasebo-sight.com
- Available Languages : ☒ENG ☒CHN ☒KOR

Address

1746 Nozaki town Sasebo city
Nagasaki

Opening

8:00~20:00 (Mar~Sep)
8:00~19:00 (Oct~Feb)

Parking lot

Standard car 250 • Large car 30

Access

<By car> 20min from Sasebo station
<By bus> 10min walk from
"Tenkaiho" bus stop of
Saihi bus

Time required

Approximately 30min

Tenkaiho



The overview of the contents

Here is most popular observatory in Sasebo where you can see 180° wide panorama view including Kujukushima.

At the garden under this observatory, you can enjoy full of field mustard in spring, and in autumn, cosmos blooms all over the garden.

Many tourists come from outside the prefecture during these flower season.

Basic information

- Contact information : Sasebo tourism convention association
- Opening : 9:00~18:00 (weekdays)
- Website : <https://www.sasebo99.com/>
- Email address : sasebo-sales@sasebo-sight.com
- Available Languages : ☒ENG ☒CHN ☒KOR

Address

399 Funakoshi town Sasebo city
Nagasaki

Parking lot

Standard car 114 ・ Large car 5

Access

<By car> 20 min from Sasebo station
<By bus> “Tenkaiho” bus stop of
Saihi bus

Time required

Approximately 30min

Ishidake observatory



The overview of the contents

The observatory at the top of Ishidake mountain at an altitude of 191m. Because here is closer to the sea than Yumiharidake, You can get a 360° of great view Kujukushima, and many photographers, both professional and amateur, visit here to get their best shot. The scenery of the islands that you can find at the beginning of the Hollywood movie "The Last Samurai" was taken from here.



Basic information

- Contact information : Sasebo tourism convention association
- Opening : 9:00~18:00 (weekdays)
- Website : <https://www.sasebo99.com/>
- Email address : sasebo-sales@sasebo-sight.com
- Available Languages : ☒ENG ☒CHN ☒KOR

Address

2277Funakoshi town Sasebo city
Nagasaki

Parking lot

Large bus is not available

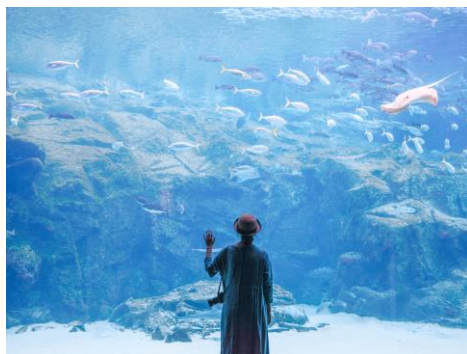
Access

<By car> 40 min from Sasebo
station

Time required

Approximately 20 min

Saikai National park Kujukushima aquarium Umikirara



The overview of the contents

Umikirara is a community-based aquarium that introduces marine creature living in the sea of Kujukushima.

- The dolphin show program “Jumping catch ball by dolphins”- This is the very original program.
- The “Kujukushima Bay Large Aquarium”-The outdoor type aquarium.
- The” Jellyfish Symphony Dome”-It is the biggest jellyfish exhibition facility in Japan.

Basic information

- Contact information : Kujukushima Pearl Sea Resort
- Opening : 9:00~17:00
- Website : <https://umikirara.jp/>
- TEL : + 8 1 - 9 5 6 - 2 8 - 4 1 8 7
- Available Languages : ☒ENG ☒CHN ☒KOR

Preventive measures for the new coronavirus

- Infection control of staffs / the facility
 - ☒Body temperature check ☒Wearing mask ☒Disinfection ☐ventilation
- Infection control of guests
 - ☒Body temperature check ☒Wearing mask ☒Disinfection ☐Keeping their contact info

Address

1008 Kashimae town Sasebo city
Nagasaki

Opening

9:00~18:00 (Mar~Oct)
9:00~17:00 (Nov~Feb)

Entry fee

1,470 JPY

Access

<Bu car> 15 min from Sasebo station
<By bus> “Pearl sea resort
Kujukushima aquarium”
bus stop of Saihi bus

Time required

Approximately 1 hr

Available Languages

☒ENG ☒CHN ☒KOR

Pearl harvesting experience



The overview of the contents

You can have experiences harvesting pearl from *Pinctada martensii*. Please bring the pearl you harvested to home.

Basic information

- Contact information : Kujukushima Pearl Sea Resort
- Opening : 9:00~17:00
- Website : <https://umikirara.jp/>
- TEL : + 8 1 - 9 5 6 - 2 8 - 4 1 8 7
- Available Languages : ☒ENG ☒CHN ☒KOR

Preventive measures for the new coronavirus

- Infection control of staffs / the facility
 - ☒Body temperature check ☒Wearing mask ☒Disinfection ☐ventilation
- Infection control of guests
 - ☒Body temperature check ☒Wearing mask ☒Disinfection ☐Keeping their contact info

Available to accept	Small groups • independents
Minimum number to operate	—
Fee	650 JPY (not including the fee for processing to accessories)
Travel agency's fee	—
Venue	Kujukushima Pearl Sea Resort (1008 Kashimae town Sasebo city Nagasaki)
Access	<By car> 15 min from Sasebo station <By bus> “Pearl sea resort Kujukushima aquarium” bus stop of Saihi bus
Deadline for booking	● days before (for group)
Opening	9:30~18:00 (Mar~Oct) 9:30~17:00 (Nov~Feb)
Time required	Approximately 5 min
Available languages	<input checked="" type="checkbox"/> ENG <input checked="" type="checkbox"/> CHN <input checked="" type="checkbox"/> KOR

99TRITON



The overview of the contents

New cruising menu that launched in June 2021. Because it is a catamaran model, which is a combination of two ships, and is more stable than a normal yacht, from kids to elder people can enjoy the cruise with this yacht. Besides the general excursion cruise in Kujukushima, 99TRITON offers you attractive cruises with meals like sushi, Italian and sweets made with local ingredients.

動画 : <https://www.youtube.com/watch?v=dpDDSmU5TXQ>

Basic information

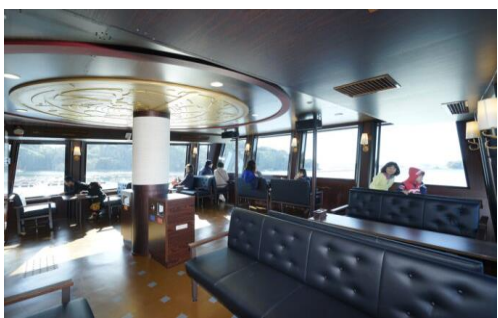
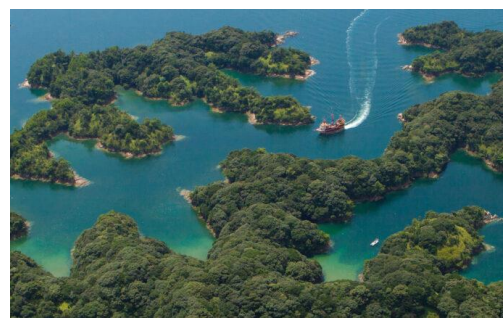
- Contact information : Kujukushima excursion cruise office
- Opening : 9:00~17:00
- Website : <https://catamaran.99cruising.jp/>
- TEL : + 8 1 - 9 5 6 - 2 8 - 1 9 9 9
- Available Languages : ☐ENG ☐CHN ☐KOR

Preventive measures for the new coronavirus

- Infection control of staffs / the facility
 - ☒Body temperature check ☒Wearing mask ☒Disinfection ☒ventilation
- Infection control of guests
 - ☒Body temperature check ☒Wearing mask ☒Disinfection ☐Keeping their contact info

Available to accept	Big & Small groups, and independents
Minimum number to operate	1 ~ 3 0 ppl
Fee	3,200 JPY~
Travel agency's fee	—
Venue	Kujukushima Pearl Sea Resort (1008 Kashimae town Sasebo city Nagasaki)
Access	<Bu car> 15 min from Sasebo station <By bus> “Pearl sea resort Kujukushima aquarium” bus stop of Saihi bus
Deadline for booking	Until the day before
Boarding time	9:30/10:50/12:10/13:30/14:50/16:10
Time required	Approximately 1hr
Available Languages	<input type="checkbox"/> ENG <input type="checkbox"/> CHN <input type="checkbox"/> KOR

Kujukushima Excursion cruise “Mirai”

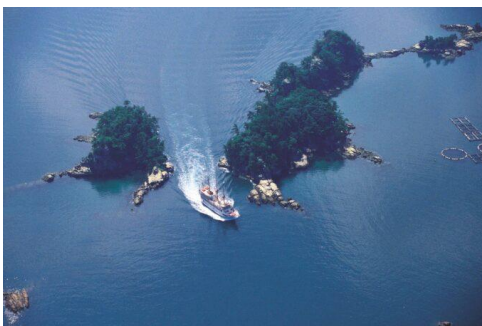


The overview of the contents

The Kujukushima Pirate Tour Boat Mirai has the idea of "running the sea toward the future." It is the first electric propulsion ship as an excursion ship in Japan, and is an eco-friendly one for future-oriented environment and nature. You can enjoy the panoramic view of Kujukushima from the large windows in the spacious guest rooms and the appearance with the motif of a pirate hat makes you exciting!

Basic information	
■ Contact information : Kujukushima excursion cruise office	
■ Opening	: 9:00~17:00
■ Website	: https://99cruising.jp/
■ TEL	: + 8 1 – 9 5 6 – 2 8 – 1 9 9 9
■ Available Languages	: <input checked="" type="checkbox"/> ENG <input checked="" type="checkbox"/> CHN <input checked="" type="checkbox"/> KOR
Preventive measures for the new coronavirus	
■ Infection control of staffs / the facility	
<input checked="" type="checkbox"/> Body temperature check <input checked="" type="checkbox"/> Wearing mask <input checked="" type="checkbox"/> Disinfection <input checked="" type="checkbox"/> ventilation	
■ Infection control of guests	
<input checked="" type="checkbox"/> Body temperature check <input checked="" type="checkbox"/> Wearing mask <input checked="" type="checkbox"/> Disinfection <input type="checkbox"/> Keeping their contact info	
Available to accept	Big & Small groups, and independents
Minimum number to operate	1 ~ 2 0 0 ppl
Fee	1,500JPY
Travel agency's fee	—
Venue	Kujukushima Pearl Sea Resort (1008 Kashimae town Sasebo city Nagasaki)
Access	<Bu car> 15 min from Sasebo station <By bus> “Pearl sea resort Kujukushima aquarium” bus stop of Saihi bus
Deadline for booking	Until the day before
Boarding time	11:30/13:30/14:30
Time required	Approximately 50 min
Available Languages	<input checked="" type="checkbox"/> ENG <input checked="" type="checkbox"/> CHN <input checked="" type="checkbox"/> KOR

Kujukushima Excursion cruise “Pearl Queen”



The overview of the contents

As the ship's name, the elegant white hull might attract you. The spacious interior of the ship that has a barrier-free structure and is decorated with wood grain makes you deep relaxed.

動画 : <https://www.youtube.com/watch?v=4RIYp5d1wZ8>

Basic information

- Contact information : Kujukushima excursion cruise office
- Opening : 9:00~17:00
- Website : <https://99cruising.jp/>
- TEL : + 8 1 - 9 5 6 - 2 8 - 1 9 9 9
- Available Languages : ☒ENG ☒CHN ☒KOR

Preventive measures for the new coronavirus

- Infection control of staffs / the facility
 - ☒Body temperature check ☒Wearing mask ☒Disinfection ☒ventilation
- Infection control of guests
 - ☒Body temperature check ☒Wearing mask ☒Disinfection ☐Keeping their contact info

Available to accept

Big & Small groups, and independents

Minimum number to operate

1 ~ 2 8 0 ppl

Fee

1,500 JPY

Travel agency's fee

—

Venue

Kujukushima Pearl Sea Resort
(1008 Kashimae town Sasebo city
Nagasaki)

Access

<By car> 15 min from Sasebo station
<By bus> “Pearl sea resort
Kujukushima aquarium”
bus stop of Saihi bus

Deadline for booking

Until the day before

Boarding time

10:00/11:00/13:00/14:00/15:00

Time required

Approximately 50 min

Available Languages

☒ENG ☒CHN ☒KOR

Relacruise



The overview of the contents

We will go around a special sightseeing course that large excursion ship cannot go through. Because the water surface is close, you can directly feel the atmospheres of Kujukushima up close. Besides that, a funny guide of the captain who is familiar with Kujukushima also make this cruise unforgettable.

Basic information

- Contact information : Kujukushima excursion cruise office
- Opening : 9:00~17:00
- Website : <https://99cruising.jp/>
- TEL : + 8 1 - 9 5 6 - 2 8 - 1 9 9 9
- Available Languages : ☒ENG ☒CHN ☒KOR

Preventive measures for the new coronavirus

- Infection control of staffs / the facility
 - ☒Body temperature check ☒Wearing mask ☒Disinfection ☒ventilation
- Infection control of guests
 - ☒Body temperature check ☒Wearing mask ☒Disinfection ☐Keeping their contact info

Available to accept	Small groups, and independents
Minimum number to operate	1 ~ 1 2 ppl
Fee	2,200 JPY
Travel agency's fee	—
Venue	Kujukushima Pearl Sea Resort (1008 Kashimae town Sasebo city Nagasaki)
Access	<Bu car> 15 min from Sasebo station <By bus> “Pearl sea resort Kujukushima aquarium” bus stop of Saihi bus
Deadline for booking	Until the day before
Boarding time	10:20/11:20/12:20/13:20/ 14:20/15:20/16:20
Time required	Approximately 50 min
Available Languages	<input type="checkbox"/> ENG <input type="checkbox"/> CHN <input type="checkbox"/> KOR

Kujukushima Oyster



The overview of the contents

"Kujukushima oyster" is one of the most popular ingredients with its plump texture and rich taste. Because you can enjoy oysters throughout the year, with "Pacific oysters" that cultivated in winter and "Rock oysters" in summer, Sasebo is the place to attract "Oyster lovers".

In particular, "Pacific oysters" that enter the season from the end of October, is super popular. You can try them at the oyster huts during the season from Oct to Mar. In every weekends and national holidays of Nov and Feb, the Kujukushima oyster events are held at the Kujukushima Pearl sea resort. Please come and try to grill fresh oyster there by yourself.

● Restaurant information in Sasebo : <https://www.sasebo99.com/gourmet/seafood#section-473>

Kujukushima rock oyster



The overview of the contents

"Kujukushima rock oyster" has its season in summer from June to August. The size of "Kujukushima oyster" is bigger than "Kujukushima Oyster"! They are raised in the beautiful and nutritious sea of Kujukushima, which is said to be a treasure trove of fish and shellfish, is very thick and firm, and has primping texture and rich flavor. It is recommended to chill and taste them raw, or to grille them on a barbecue is also wanderful 🎵 Please enjoy our "Kujukushima rock oyster" that carefully raised in the sea of Kujukushima , at the site!

● Restaurant information in Sasebo : <https://www.sasebo99.com/gourmet/seafood#section-473>

Kujukushima tiger blowfish



The overview of the contents

Sasebo is the city that produce the most cultivated tiger blowfish in Japan! The northern part sea of Kujukushima has good tide changes and enough depth, so it is a perfect condition for fish farming. "Kujukushima tiger blowfish", which is grown in such a rich environment, are fed early-picked oranges in order to improve its flavor and firmness. Please visit us and taste our tiger fish that have unique texture and full of umami with their fat and clear & vivid body.

● Restaurant information in Sasebo : <https://www.sasebo99.com/gourmet/seafood#section-473>

Saikai national park Kujukushima zoo and botanical garden Mori Kirara



The overview of the contents

Mori Kirara, located on a hill overlooking Kujukushima, is the zoo and botanical garden with the theme of nature and healing of Kujukushima. You can see the adorable animals living in the garden surrounded by beautiful flowers and trees.

Basic information

- Contact information : Kujukushima Pearl Sea Resort
- Opening : 9:00~17:00
- Website : <https://morikirara.jp/>
- TEL : + 8 1 - 9 5 6 - 2 8 - 4 1 8 7
- Available Languages : ☒ENG ☒CHN ☒KOR

Preventive measures for the new coronavirus

- Infection control of staffs / the facility
 - ☐Body temperature check
 - ☐Wearing mask
 - ☐Disinfection
 - ☐ventilation
- Infection control of guests
 - ☐Body temperature check
 - ☐Wearing mask
 - ☒Disinfection
 - ☐Keeping their contact info

Address

1008 Kashimae town Sasebo city
Nagasaki

Opening

9:00~17:00

Entry fee

830 JPY

Access

<By car> 15 min from Sasebo station
<By bus> "In front of the zoo &
botanical garden"
bus stop of Saihi bus

Time required

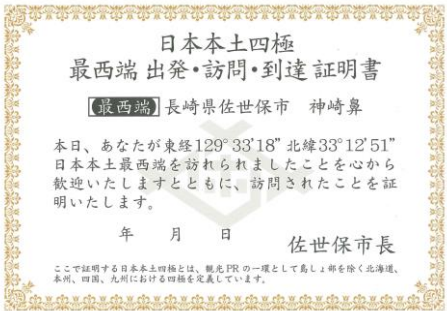
Approximately 1 hr

Available Languages

: ☐ENG ☐CHN ☐KOR

Photo spots

Kozakibana Park, the westernmost point of mainland Japan



The overview of the contents

Kozakibana, located at east longitude; lat. 129°33' and north latitude; lat. 33°12', is the westernmost point of mainland Japan. The blue sea and the sound of the surf might fascinate visitors. You will get a "Certificate of Visit to the Westernmost Point of Mainland Japan" by showing a photo at the Sasebo Tourist Information Center after visiting Kozakibana Park,

✂Please let the center know if you need allot certifications of your group.

Basic information

- Contact information : Sasebo tourism convention association
- Opening : 9:00 ~18:00 (Weekdays)
- Website : <https://www.sasebo99.com/>
- Email address : sasebo-sales@sasebo-sight.com
- Available Languages : ☒ENG ☒CHN ☒KOR

Address	35-4-1 Kusudomari Kosaza town Sasebo city Nagasaki
Parking lot	Ordinary car 5・Large car 1
Access	<By car> 40 min from Sasebo station
Time required	Approximately 30 min

Awashima shrine



The overview of the contents

This shrine is located on one of the islands of Kujukushima, and three gods who especially takes care of women are enshrined. Since people believe that this god has power giving babies or preventing from gynecological illnesses , the entire island is treated as a power spot.

Basic information

- Contact information : Sasebo tourism convention association
- Opening : 9:00 ~18:00 (Weekdays)
- Website : <https://www.sasebo99.com/>
- Email address : sasebo-sales@sasebo-sight.com
- Available Languages : ☒ENG ☒CHN ☒KOR

Address

168 Funakoshi town Sasebo city Nagasaki

Parking lot

Large buses are not available

Access

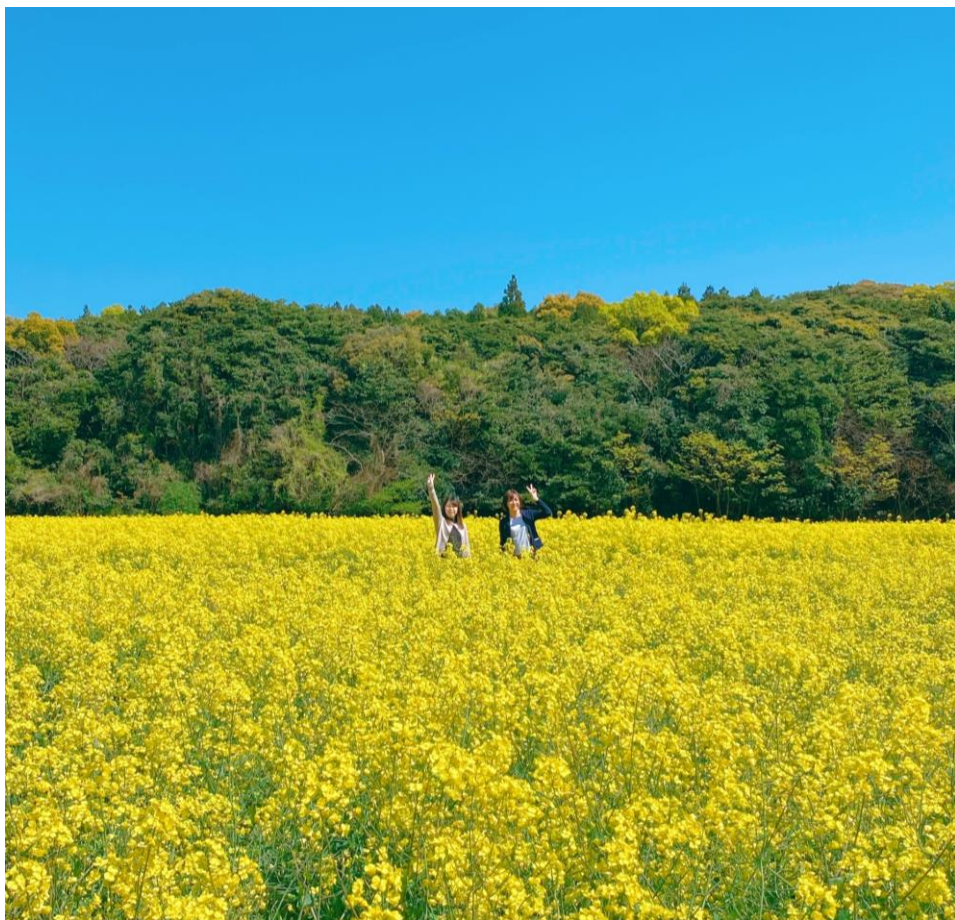
<By car> 40 min from Sasebo station

Time required

Approximately 30 min

Seasonal flowers

(Mar~April) Canola flowers/Tenkaiho



Basic information

- Contact information : Sasebo tourism convention association
- Opening : 9:00 ~18:00 (Weekdays)
- Website : <https://www.sasebo99.com/>
- Email address : sasebo-sales@sasebo-sight.com
- Available Languages : ☒ENG ☒CHN ☒KOR

The overview of the contents

Here is most popular observatory in Sasebo where you can see 180° wide panorama view including Kujukushima.

Address

399 Funakoshi town Sasebo city
Nagasaki

Parking lot

Standard car 114 • Large car 5

Access

<By car> 20 min from Sasebo station
<By bus> “Tenkaiho” bus stop of
Saihi bus

Time required

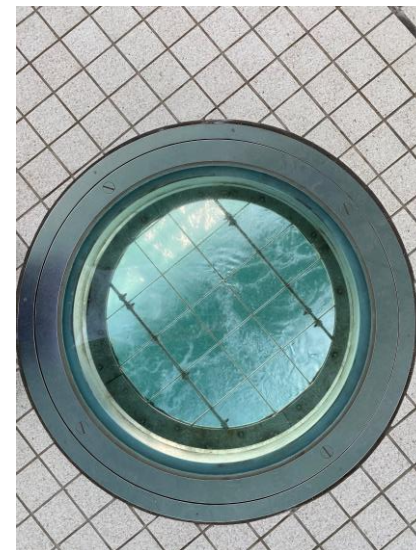
Approximately 30min

(Mar~Apr) Cherry blossoms/Saikaibashi park



The overview of the contents

Saikaibashi Park is at the foot of two Saikaibashi bridges that over Hario Seto strait. Hario Seto is a place where you can enjoy the tide flows quickly and the natural landscape such as the eddy tide. It is also famous as a place of full of cherry blossoms, and there are plenty of facilities such as slides, sledding slopes, softball fields, and gate ball fields, and you can enjoy healthy activities in the beautiful nature.



Basic information

- Contact information : Sasebo tourism convention association
- Opening : 9:00 ~18:00 (Weekdays)
- Website : <https://www.sasebo99.com/>
- Email address : sasebo-sales@sasebo-sight.com
- Available Languages : ☒ENG ☒CHN ☒KOR

Address

2678 Hariohigashi town
Sasebo city Nagasaki

Parking lot

Large buses are not available

Access

<By car> 20 min from
Sasebo station
<By bus> "Saikaibashi west or east
entrance" bus stop of
Saihi bus

Time required

Approximately 30min

(Apr~May) Azalea/Nagakushiyama park



The overview of the contents

You can enjoy about 100,000 azaleas from the beginning of April to the beginning of May. It is brilliant to see the northern Kujukushima from this park, so please visit this park anyone who want to enjoy both Kujukushima and azaleas.

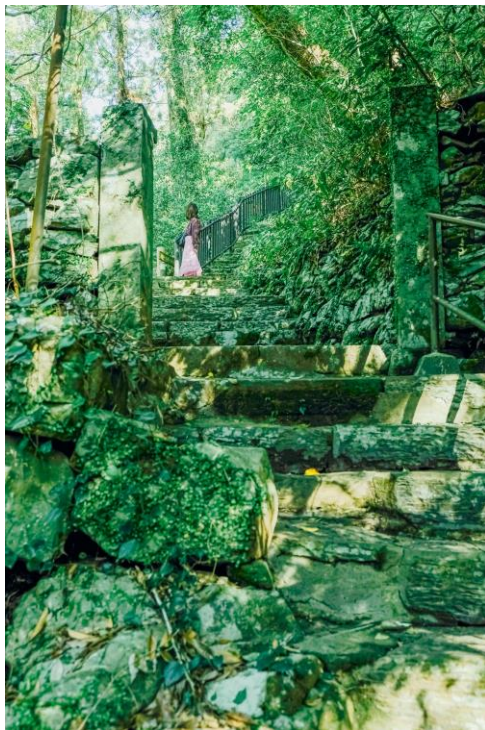


Basic information

- Contact information : Nagakushiyama park visitor center
- Opening : 9:00~17:00
- TEL : + 8 1 - 9 5 6 - 7 7 - 4 1 1 1
- Available Languages : Japanese only

Address	174-12 Nagakushi Shikamachi town Sasebo city Nagasaki
Entry fee	500 JPY (During the Azalea festival)
Parking lot	Large buses are available
Access	<By car> 45 min from Sasebo station <バス> 15 min walk from "nagakushiyama tsutsuji park" bus stop of Saihi bus
Time required	Approximately 1hr

(May~Aug) Fresh green/Senryugataki waterfall



The overview of the contents

This waterfall, which has 20 meters high and 6 meters deep, is divided into male waterfall and female waterfall. In the nature of the four seasons, the majestic appearance that praises the unchanging beauty shall give you an impression of deep emotion and peace.

Basic information

- Contact information : Sasebo tourism convention association
- Opening : 9:00 ~18:00 (Weekdays)
- Website : <https://www.sasebo99.com/>
- Email address : sasebo-sales@sasebo-sight.com
- Available Languages : ☒ENG ☒CHN ☒KOR

Address

659-1 Tanomoto Emukae town
Sasebo city Nagasaki

Parking lot

Large buses are not available

Access

<By car> 35 min from
Sasebo station

Time required

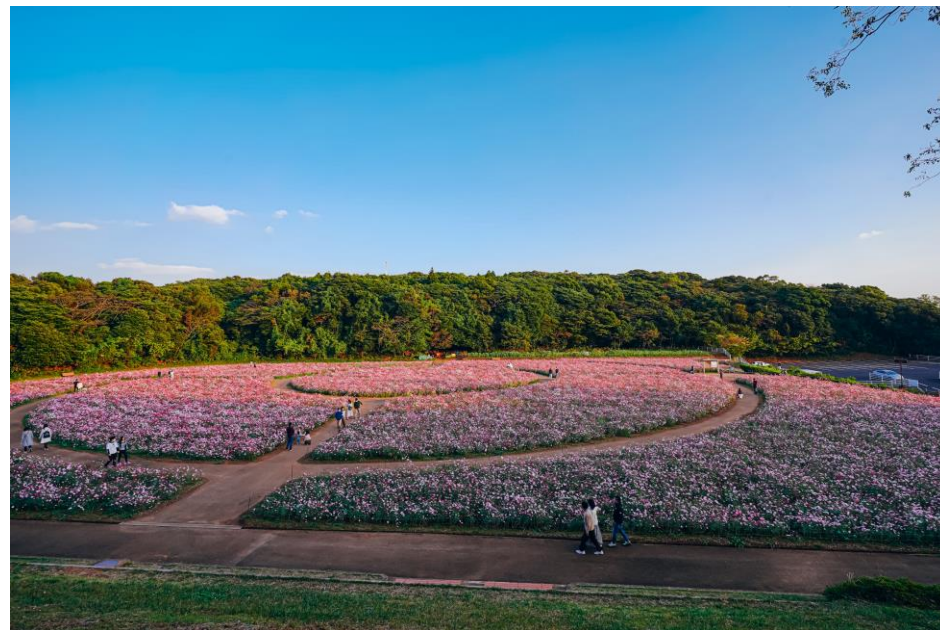
Approximately 30 min

(Oct) Cosmos/Tenkaiho



The overview of the contents

Here is most popular observatory in Sasebo where you can see 180° wide panorama view including Kujukushima.



Basic information

- Contact information : Sasebo tourism convention association
- Opening : 9:00 ~ 18:00 (Weekdays)
- Website : <https://www.sasebo99.com/>
- Email address : sasebo-sales@sasebo-sight.com
- Available Languages : ☒ENG ☒CHN ☒KOR

Address

399 Funakoshi town Sasebo city
Nagasaki

Parking lot

Standard car 114 • Large car 5

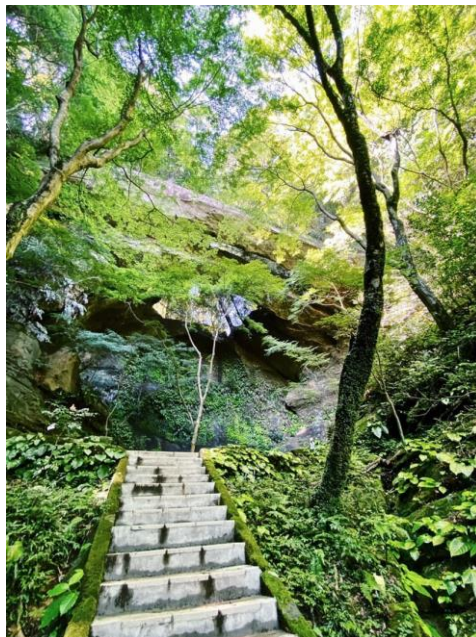
Access

<By car> 20 min from Sasebo station
<By bus> "Tenkaiho" bus stop of
Saihi bus

Time required

Approximately 30min

(Oct~Nov) Autumn leaves/Ohashi Goddess of Kannon temple



The overview of the contents

You can find a natural huge stone bridge is built like a floating bridge in the back of an elegant garden of Mihashi Kannonji Temple. There is a fern community designated as a national natural monument in the precincts. Because Makinodake Park locates next to the temple, you also enjoy cherry blossoms and autumn leaves in their season.

Basic information

- Contact information : Sasebo tourism convention association
- Opening : 9:00 ~18:00 (Weekdays)
- Website : <https://www.sasebo99.com/>
- Email address : sasebo-sales@sasebo-sight.com
- Available Languages : ☒ENG ☒CHN ☒KOR

Address

94 Naoya Yoshii town Sasebo city Nagasaki

Parking lot

Large buses are available

Access

<By car> 30 min from Sasebo station

Time required

Approximately 30 min

(Oct~Nov) Autumn leaves /Jufukuji Temple



The overview of the contents

At the season of autumn leaves, colorful "upside-down autumn leaves" will be on exhibit for a limited time. At this time, because a part of the tatami mats in the hall is peeled off and an acrylic board is fitted, you can see the autumn leaves in the garden are moved upside down. The scenery is just as beautiful as a cut-out picture, and it entertains the visitors. In the early summer season, "upside-down fresh green" will be released in the same way, so you can feel refreshed.

✂Please make reservation for group visiting



Basic information

- Contact information : Jufukuji Temple
- TEL : + 8 1 - 9 5 6 - 6 5 - 2 0 4 0
- Available Languages : Japanese only

Address

276Nagasaka Emukae town
Sasebo city Nagasaki

Entry fee

500 JPY (During the season of
autumn leaves)

Parking lot

Large buses are available

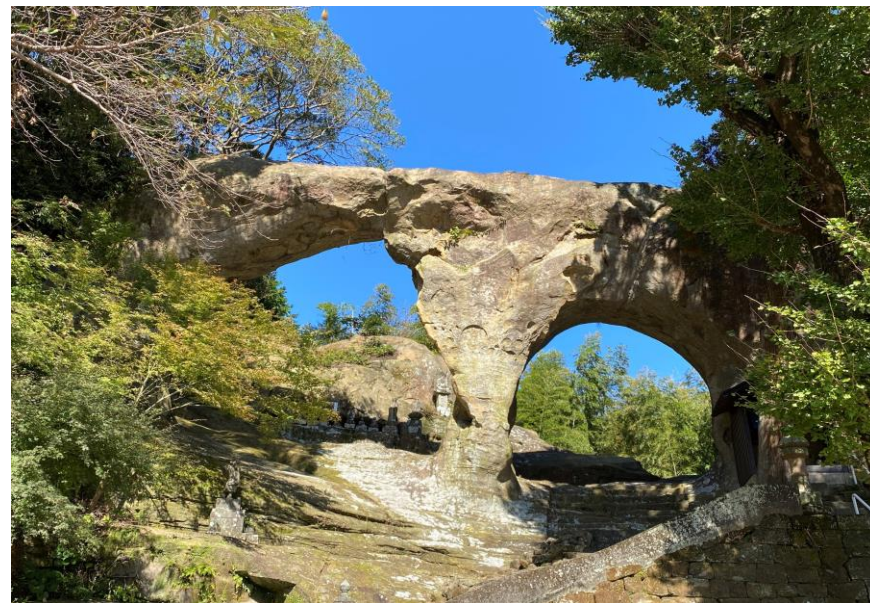
Access

<By car> 40 min from Sasebo
station
<By bus> 5 min walk from
"Emukae bus stop of Saihi bus."
<By train> 10 min walk from
"Emukaeshikamachi" station of
Matsuura railway

Time required

Approximately 30 min

(Oct~Nov) Autumn leaves／Neganeiwa rock



Basic information

- Contact information : Sasebo tourism convention association
- Opening : 9:00 ~ 18:00 (Weekdays)
- Website : <https://www.sasebo99.com/>
- Email address : sasebo-sales@sasebo-sight.com
- Available Languages : ☒ENG ☒CHN ☒KOR

The overview of the contents

This rock with the shape of glasses has a legend that a demon made. But surprisingly, this huge rock with 10m of the height and 20m of wide is a completely natural masterpiece.

Address

1266-1 Setogoe town Sasebo
city Nagasaki

Parking lot

Large buses are not available

Access

<By car> 20min from Sasebo
station
<By bus> 10 min walk from
"Sakaigi" bus stop of Saihi bus

Time required

Approximately 30 min

Historical places

Mukyudo



Basic information

- Contact information : Mukyudo Kensyo Preservation Association
- Opening : 9:00~17:00
- Website : + 8 1 - 9 5 6 - 5 9 - 2 0 0 3
- Available Languages :Japanese only

The overview of the contents

"Mukyudo" is a huge air raid shelter dug by teachers and elementary school students of Miyamura National School at that time during World War II (1943). The inside is approximately 5m wide and 20m deep, and is large enough to evacuate 500 students. Not only classrooms, but also there were toilets, kitchens, and food warehouses so that they could have lessons and live even while evacuating. You can learn there about the background of the wartime era.

※※Please make reservation for group visiting

Address	3-2 Joma town Sasebo city Nagasaki
Entry fee	Free
Parking lot	Large buses are available
Access	<By car> 20 min from Sasebo station <By bus> 3 min walk from "Miyasisyo Entrance" of Saihi bus
Time required	Approximately 40 min

Tonoo market · Tunnel Alley



The overview of the contents

Tonoo Market Street has been popular among Sasebo citizens as a kitchen where people can get fresh fish and vegetables since the Taisho era. There is an alley along the national highway, and it is called Tunnel Alley where is a market that was created by making use of the air raid shelter during the war.

Basic information

- Contact information : Sasebo tourism convention association
- Opening : 9:00 ~18:00 (Weekdays)
- Website : <https://www.sasebo99.com/>
- Email address : sasebo-sales@sasebo-sight.com
- Available Languages : ☒ENG ☒CHN ☒KOR

Address	Tonoo town to Matsukawa town Sasebo city Nagasaki
Opening	8:00~18:00 (Depending on each shop)
Shop holidays	Sun
Parking lot	None
Access Time required	5 min walk from Sasebo city
Time required	Approximately 30 min

SASEBO military port cruise



The overview of the contents

Sasebo is the port town that has the Maritime Self-Defense Force, the Japan Coast Guard, and the US Navy, and tells the history of "military ports" to us. Sasebo Port, which connects shipyards, Goto islands, Saikai sea, and the islands of Hirado , has been the face of Sasebo since ancient times when it was a small fishing port. Please enjoy the "SASEBO military port cruise" listening to the guide's explanations.

※Big group can charter the ship.

Movie : <https://www.youtube.com/watch?v=D6kpw6rNRJo>

Basic information

- Contact information : Sasebo Tourism information center
- Opening : 9:00~18:00
- Website : <https://www.sasebo99.com/>
- TEL : + 8 1 - 9 5 6 - 2 3 - 3 3 6 9
- E-mail address : 99@sasebo-sight.com
- Available Languages : ☒ENG

Preventive measures for the new coronavirus

- Infection control of staffs / the facility
 - ☒Body temperature check
 - ☒Wearing mask
 - ☒Disinfection
 - ☒ventilation
- Infection control of guests
 - ☒Body temperature check
 - ☒Wearing mask
 - ☒Disinfection
 - ☒Keeping their contact info

Available to accept	Big & Small groups, and independents
Minimum number to operate	1 ~ 8 0 ppl
Fee	2,000 JPY
Travel agency's fee	1 0 %
Venue	Sasebo Tourism information center 21-1 Miura town Sasebo city Nagasaki
Access	JR Sasebo station
Deadline for booking	Until the day before
Boarding time	1 1 : 3 0 ※Ticketing deadline is 11:00
Time required	Approximately 1hr 30 min
Operating Date	Sat, Sun and National holidays
Available languages	Translation App

Mikawachi-yaki pottery



The overview of the contents

What makes “Mikawachi pottery” , that is designated as a national traditional craft and has a history of 400 years, special is of applying beautiful and delicate paintings to white porcelain with an indigo dye called Gosu. A typical example of the pottery is "Karako-e", and "watermark carving", which boasts advanced technology and high artistry among Mikawachi-yaki. It is said that some works require half a year to complete. Even now, there are many kilns in the Mikawachi Sarayama area, and they continue to keep their traditional crafts.

Mikawachi-yaki pottery custom-made & traditional kiln tour



The overview of the contents

Mikawachi-yaki pottery is high-quality porcelains that represents Sasebo City, and its white porcelain dyed with a blue pattern and its delicate design are very popular. It has been loved by aristocrats not only in Japan but all over the world. In this activity, you will visit the well-established Mikawachi-yaki ware kiln with your guide. When you book this tour, please order the pottery you like from the catalog in advance. The selected pottery will be produced by craftsmen beforehand. On the day of the tour, you will be asked to take out the freshly baked your pottery from the kiln. This is a special process that other tours usually don't allow to do.

Basic information

- Contact information : Voyagin
- Website : <https://www.govoyagin.com/>
- Available Languages : ☒ENG ☒CHN ☒KOR

Preventive measures for the new coronavirus

- Infection control of staffs / the facility
 - ☒Body temperature check ☒Wearing mask ☒Disinfection ☒ventilation
- Infection control of guests
 - ☒Body temperature check ☒Wearing mask ☒Disinfection ☐Keeping their contact info

Available to accept	Small group, independents
Minimum number to operate	1 ~ 10 ppl
Sales price	72,650 JPY~
Travel agency's fee	—
Venue	Hiradokoshodanemongama 889 Mikawachi town Sasebo city Nagasaki
Access	<By car> 30min from Sasebo station
Deadline for booking	Until three months before
Available time to accept	13 : 00 ~ 14 : 30
Operating Date	1.5 hrs.
Available languages	<input checked="" type="checkbox"/> ENG <input type="checkbox"/> CHN <input type="checkbox"/> KOR

Shopping

Michi no eki (Roadside station) "Sasebox 99"



The overview of the contents

A roadside station where you can buy souvenirs and special products from Sasebo City. You can also enjoy local gourmet food such as Sasebo burger, lemon steak, and navy curry at the food court, .



Basic information

- Contact information : Michinoeki Sasebox 99
- Opening : 9:00~18:00
- Website : <http://sasebox99.com/>
- TEL : + 8 1 - 9 5 6 - 4 2 - 6 0 7 7
- Available Languages :Japanese only

Preventive measures for the new coronavirus

- Infection control of staffs / the facility
 - ☒Body temperature check
 - ☒Wearing mask
 - ☒Disinfection
 - ☐ventilation
- Infection control of guests
 - ☒Body temperature check
 - ☒Wearing mask
 - ☒Disinfection
 - ☐Keeping their contact info

Address

11 Atago town Sasebo city Nagasaki

Parking lot

Ordinary car 84 ・ Large car 8

Access

<By car> 15min from Sasebo station

Sasebo 5bangai (5th street)



The overview of the contents

You can reach the shopping mall by 1 minute walk from JR Sasebo Station, Minato Exit. 83 stores belong to his shopping mall facing the sea . You can enjoy not only shopping but also relaxing meals at restaurants and cafes watching the sea.



Basic information

- Contact information : Sasebo 5th street
- Opening : 10:00~21:00 (shops)
- Website : <https://sasebo-5bangai.com/>
- TEL : + 8 1 - 9 5 6 - 3 7 - 3 5 5 5
- Available Languages : Japanese only

Preventive measures for the new coronavirus

- Infection control of staffs / the facility
 - ☐ Body temperature check ☒ Wearing mask ☒ Disinfection ☒ ventilation
- Infection control of guests
 - ☐ Body temperature check ☒ Wearing mask ☒ Disinfection ☐ Keeping their contact info

Address

2-1 Shinminato town Sasebo city
Nagasaki

Parking lot

Large cars are not available

Access

5 min walk from Sasebo station

Sasebo Shikisaikan



Basic information

- Contact information : Sasebo shikisaikan
- Opening : 9:00~18:00
- TEL : + 8 1 - 9 5 6 - 3 0 - 7 7 4 4
- Available Languages : Japanese only

Preventive measures for the new coronavirus

■ Infection control of staffs / the facility

- ☐ Body temperature check ☒ Wearing mask ☒ Disinfection ☐ ventilation

■ Infection control of guests

- ☐ Body temperature check ☒ Wearing mask ☐ Keeping their contact info

Address

289-1 Mikawachihon town Sasebo city
Nagasaki

Parking lot

Large cars are available

Access

<By car> 30 min from Sasebo station
<By train> 10 min walk from
"Mikawachi" JR station

The overview of the contents

Because this shop sell more than 800 special products of Sasebo such as local agricultural or processed products, famous confectionery and Mikawachi-yaki pottery, and also has options of fresh seafood from the beautiful sea of Kujukushima. You can find best souvenirs there.

Gourmet

Sasebo burger



The overview of the contents

After the World War II, the US Navy base was set up in Sasebo City. And it brought various American cultures such as music, food, and fashion to the area. "Sasebo Burger" is one of such American cultures. It is said that around 1950, a shop got the burger recipe directly from the US Navy base and started making them. That's why People call Sasebo is "the place where hamburgers were introduced".

There are some definitions of Sasebo Burger, besides the main premise that "start making after receiving an order". Let's say "The head office should be in Sasebo" is the second one. And regarding to the ingredients, "Fresh raw vegetables are used for the burger" and "You should use original sauce" are essential conditions. Shops that meet these conditions offer unique menus, and there are more than 25 shops in Sasebo City, now. Please enjoy exploring to Sasebo eating Sasebo burger!

Sasebo Burger Handmade Experience



The overview of the contents

Please try to prepare the local gourmet “Sasebo burger” by yourself!
you also can enjoy this beautiful Kujukushima view from the shop. It might be wonderful if you can eat your handmade hamburger watching the beautiful view!

Movie : <https://youtu.be/1u6cPdUbSPE>

Basic information

- Contact information : Sasebo Tourism information center
- Opening : 9:00~18:00
- Website : <https://www.sasebo99.com/>
- TEL : + 8 1 - 9 5 6 - 2 3 - 3 3 6 9
- E-mail address : 99@sasebo-sight.com
- Available Languages : ☒ENG

Preventive measures for the new coronavirus

- Infection control of staffs / the facility
 - ☒Body temperature check ☒Wearing mask ☒Disinfection ☒ventilation
- Infection control of guests
 - ☐Body temperature check ☒Wearing mask ☐Keeping their contact info

Available to accept

Groups. Independences

Minimum number to operate

1 ~ 5 0 ppl

Sales price

1,000 JPY (All inclusive)

Travel agency's fee

5 %

Venue

The Sasebo burger original shop
190-1 Funakoshi town Sasebo city
Nagasaki

Access

<By car> 15 min from Sasebo station
<By car> 5 min from Kujukushima
Pearl Sea resort

Deadline for booking

Until 17:00 of the day before

Available time to accept

1 0 : 0 0 ~ 1 8 : 0 0

Operating Date

Approximately 1 hr

Available languages

Use translation App

Making candles of Sasebo burger & Beeswax wrap



The overview of the contents

You can have experiences making full-scale candles of Sasebo's local gourmet "Sasebo Burger" and eco-friendly "beeswax wrap" at the soap and candle specialty store. This workshop program includes teatime.

Basic information

- Contact information : Sasebo Tourism information center
- Opening : 9:00~18:00
- Website : <https://www.sasebo99.com/>
- TEL : + 8 1 - 9 5 6 - 2 3 - 3 3 6 9
- E-mail address : 99@sasebo-sight.com
- Available Languages : ☒ENG

Preventive measures for the new coronavirus

- Infection control of staffs / the facility
 - ☐ Body temperature check
 - ☐ Wearing mask
 - ☐ Disinfection
 - ☒ Ventilation
- Infection control of guests
 - ☐ Body temperature check
 - ☐ Wearing mask
 - ☐ Disinfection
 - ☐ Keeping their contact info

Available to accept

Small groups, Independents

Minimum number to operate

1 ~ 4 ppl

Sales price

1 person / 5,000 JPY
More than 2 people / 4,500 JPY

Travel agency's fee

5 %

Venue

Harujion
13-2 Yamate town Sasebo city Nagasaki

Access

<By car> 10 min from Sasebo station
<By bus> 1 min walk from "Yamate town entrance" of Saihi bus

Deadline for booking

Until 15:00 of the day before

Available time to accept

10:00 ~ 16:00

Time required

Approximately 2 hrs.

Available languages

Using translation App

Making sushi and Japanese omelet experiences at a seafood restaurant



The overview of the contents

You can learn how to make nigiri sushi, sushi rolls, and dashi maki (Japanese omelet) at a traditional seafood restaurant.(You can choose raw or cooked fish for your handmade sushi)

In addition, you can actually wear a sushi chef's coat, and while watching the craftsman's artistic handiwork, you can make sushi and omelet by yourself. After you prepare sushi and omelet, you can enjoy them as your lunch there.

Because you can get an English recipe after the experience, so you can enjoy making them again even after returning to your home country.

Basic information	
■ Contact information : Voyagin	
■ Website : https://www.govoyagin.com/	
■ Available Languages : <input checked="" type="checkbox"/> ENG <input checked="" type="checkbox"/> CHN <input checked="" type="checkbox"/> KOR	
Preventive measures for the new coronavirus	
■ Infection control of staffs / the facility	
<input checked="" type="checkbox"/> Body temperature check <input checked="" type="checkbox"/> Wearing mask <input checked="" type="checkbox"/> Disinfection <input checked="" type="checkbox"/> ventilation	
■ Infection control of guests	
<input checked="" type="checkbox"/> Body temperature check <input checked="" type="checkbox"/> Wearing mask <input checked="" type="checkbox"/> Disinfection <input type="checkbox"/> Keeping their contact info	
Available to accept	Small groups, Independents
Minimum number to operate	2 ~ 7 ppl
Sales price	6,000 JPY (All inclusive)
Travel agency's fee	—
Meeting point	Hidariishi station of Matsuura railway 8 Tahara town Sasebo city Nagasaki
Access	<By train> "Hidariishi" station of Matsuura railway
Deadline for booking	Until the three days before
Available time to accept	1 1 : 0 0 ~ 1 4 : 0 0
Time required	Approximately 2.5 hrs.
Available languages	Using translation App

Nagasaki Wagyu beef



The overview of the contents

Taking advantage of the cool climate in the summer and the warm climate in the winter at Sasebo, each cow is bred with great care and love. Its delicious enough to win the Prime Minister's Award and became the best in Japan at the 10th National Wagyu Ability Co-Promotion Society.

● Nagasaki Wagyu beef : <https://www.city.sasebo.lg.jp/nourinsuisan/nouchiku/nagasakiwagyu.html>

Lemon steak



The overview of the contents

"Lemon steak" is original gourmet of Sasebo and was created by arranging popular steaks to suit the tastes of Japanese people under the influence of the US Navy. Sprinkling with a lemon-flavored soy sauce-based sauce on slices of meat on hot iron plates makes this steak special. Please try this new refreshing taste of steak with plenty of lemon juice.

● Lemon steak : <https://www.sasebo99.com/gourmet/lemonsteak>

MY SASEBO PASS



Basic information

- Contact information : Sasebo tourism convention association
- Opening : 9:00~18:00 (weekdays)
- Website : <https://www.sasebo99.com/>
- Email address : sasebo-sales@sasebo-sight.com
- Available Languages : ☒ENG ☒CHN ☒KOR

The overview of the contents

"MY SASEBO PASS" makes you possible to enjoy "Sasebo gourmet" with cheaper price at more than 60 shops . Please enjoy sightseeing in Sasebo with a special price making use of your smartphone and this pass.

URL : https://www.sasebo99.com/my_sasebo_pass/

Available to accept	Big & Small groups , independents
Sales price	2,500 JPY (1 Pass+ 4 tickets)
Travel agency's fee Address	1 5 %
Address	Sasebo tourism convention association 21-1 Miura town Sasebo city Nagasaki
Venue	JR Sasebo station
Access	-
Exchange time	9 : 0 0 ~ 1 8 : 0 0
Available languages	<input checked="" type="checkbox"/> ENG <input checked="" type="checkbox"/> CHN <input checked="" type="checkbox"/> KOR

Umegae Sake brewery



The overview of the contents

Umegae Sake Brewery, where you can enjoy the history and atmosphere from 1787, is a 5-minute drive from Huis Ten Bosch. Please pick up your favorite at the brewery's direct sales store trying tasting more than 30 types of their products, such as sake, shochu, fruit liquor, and health-conscious amazake.

* You can also visit the sake brewery. (Reservation required)

Basic information

- Contact information : Umegae Sake brewery Ltd.,
- Website : <https://www.umegae-shuzo.com/>
- TEL : +8 1 - 9 5 6 - 5 9 - 2 3 1 1
- Available Languages : Japanese only

Preventive measures for the new coronavirus

- Infection control of staffs / the facility
 - ☐ Body temperature check ☒ Wearing mask ☒ Disinfection ☒ ventilation
- Infection control of guests
 - ☒ Body temperature check ☒ Wearing mask ☒ Disinfection ☐ Keeping their contact info

Address	317 Jyoma town Sasebo city Nagasaki
Parking lot	Ordinary cars: 54, Large cars: 5
Access Opening	<By car> 25min from Sasebo station <By bus> 7 min walk from 「Nagahata cho」 of Saihi bus
Opening	9 : 0 0 ~ 1 8 : 0 0
Entry fee	Free of charge
Time required	Approximately 30 min

Senryu Sake brewery



The overview of the contents

This brewery was founded in 1688 , and have been brewing at the same building and using the spring water of its founding .Their motto is to brew sake with local contract-grown rice, local water and local people.

Basic information

- Contact information : Senryu Sake brewery Ltd.,
- Website : <https://www.sake-honjin.com/>
- TEL : +8 1 – 9 5 6 – 6 5 – 2 2 0 9
- Available Languages : Japanese only

Preventive measures for the new coronavirus

- Infection control of staffs / the facility
 - ☐ Body temperature check ☒ Wearing mask ☒ Disinfection ☒ ventilation
- Infection control of guests
 - ☒ Body temperature check ☒ Wearing mask ☒ Disinfection ☐ Keeping their contact info

Address

209 Nagasaka Emukae town Sasebo city Nagasaki

Parking lot

Large cars are available

Access Opening

<By car> 45 min from Sasebo station
<By bus> "In front of Jonen-ji " of Saihi bus

Opening

8 : 1 5 ~ 1 6 : 4 5

Entry fee

Free of charge

Time required

Approximately 30 min

Experiences

Print experience on tote bags



The overview of the contents

You can choose your favorite design & color and make an original tote bag with a motif of Sasebo making use of silk screen. Why don't you try to make them as your souvenir with full of memories of Sasebo?

Basic information

- Contact information : Sasebo Tourism information center
- Opening : 9:00~18:00
- Website : <https://www.sasebo99.com/>
- TEL : + 8 1 - 9 5 6 - 2 3 - 3 3 6 9
- E-mail address : 99@sasebo-sight.com
- Available Languages : ☒ENG

Preventive measures for the new coronavirus

- Infection control of staffs / the facility
 - ☒Body temperature check ☒Wearing mask ☒Disinfection ☒ventilation
- Infection control of guests
 - ☐Body temperature check ☒Wearing mask ☒Disinfection ☐Keeping their contact info

Available to accept	Small groups • Independents
Minimum number to operate	1 ~ 4 ppl
Sales price	2,000 JPY (All inclusive)
Travel agency's fee	5 %
Venue	2-9 Yorozu town Sasebo city Nagasaki
Access	5 min from Sasebo station
Deadline for booking	Until 15:00 the day before
Available time to accept	1 0 : 0 0 ~ 1 7 : 0 0
Time required	Approximately 30min
Day off	Sun and National holidays
Available Languages	Using translation App

Making “Kogei cocoon ball”



The overview of the contents

"Mayudama (cocoon ball)" is a lucky charm that is widely known in Emukae-cho, Sasebo City. Inserting the cloth into the Styrofoam ball makes it possible to create your original cocoon ball.

Basic information

- Contact information : Sasebo Tourism information center
- Opening : 9:00~18:00
- Website : <https://www.sasebo99.com/>
- TEL : + 8 1 - 9 5 6 - 2 3 - 3 3 6 9
- E-mail address : 99@sasebo-sight.com
- Available Languages : ☒ENG

Preventive measures for the new coronavirus

- Infection control of staffs / the facility
 - ☒Body temperature check
 - ☒Wearing mask
 - ☒Disinfection
 - ☒ventilation
- Infection control of guests
 - ☒Body temperature check
 - ☒Wearing mask
 - ☒Disinfection
 - ☐Keeping their contact info

Available to accept	Big & Small groups , Independents
Minimum number to operate	1 ~ 1 5 ppl
Sales price	1,000 JPY (All inclusive)
Travel agency's fee	5 %
Venue	Takumi craft center 188-4 Nagasaka Kogei town Sasebo city Nagasaki
Access	<By car> 35 min from Sasebo station <By bus> 3 min walk from “Kogei ” of Saihi bus
Deadline for booking	Until 17:00 the day before
Available time to accept	10 : 00~12 : 00 / 13 : 00~15 : 00
Time required	Approximately 2 hrs
Day off	Sun, National holidays
Available Languages	Using translation App

Enjoying “irori” fireplace at the classic house



The overview of the contents

Let's make grilled rice balls around the “Irori” (Japanese fireplace) at 100-year-old classic house. You can experience relaxing and luxurious time in a space where you can feel the history of Japan.

Basic information

- Contact information : Sasebo Tourism information center
- Opening : 9:00~18:00
- Website : <https://www.sasebo99.com/>
- TEL : + 8 1 - 9 5 6 - 2 3 - 3 3 6 9
- E-mail address : 99@sasebo-sight.com
- Available Languages : ☒ENG

Preventive measures for the new coronavirus

- Infection control of staffs / the facility
 - ☒Body temperature check ☒Wearing mask ☒Disinfection ☒ventilation
- Infection control of guests
 - ☒Body temperature check ☒Wearing mask ☒Disinfection ☒Keeping their contact info

Available to accept	Big & Small groups ,Independents
Minimum number to operate	2 ~ 1 0 ppl
Sales price	2,000 JPY (All inclusive)
Travel agency's fee	5 %
Venue	Classic house style experiences craft center “Traikan” 1017-1 Fukui Yoshii town Sasebo city Nagasaki
Access	<By car> 40 min from Sasebo station <By bus> “Shimofukui” of Saihi bus
Deadline for booking	Until 15:00 the day before
Available time to accept	1 0 : 0 0 ~ 1 7 : 0 0
Time required	Approximately 2 hrs
Available languages	<input checked="" type="checkbox"/> ENG

Origami & calligraphy Experiences



The overview of the contents

You can feel free to experience Japanese culture there! Why don't you make decorations with origami or write your favorite characters with calligraphy?

Basic information

- Contact information : Sasebo Tourism information center
- Opening : 9:00~18:00
- Website : <https://www.sasebo99.com/>
- TEL : + 8 1 - 9 5 6 - 2 3 - 3 3 6 9
- E-mail address : 99@sasebo-sight.com
- Available Languages : ☒ENG

Preventive measures for the new coronavirus

- Infection control of staffs / the facility
 - ☒Body temperature check
 - ☒Wearing mask
 - ☒Disinfection
 - ☒ventilation
- Infection control of guests
 - ☐Body temperature check
 - ☒Wearing mask
 - ☒Disinfection
 - ☐Keeping their contact info

Available to accept

Big & Small groups, Independents

Minimum number to operate

2 ~ 5 ppl

Sales price

2,000 JPY (all inclusive)

Travel agency's fee

5 %

Venue

ILS SASEBO
Room 302, 1-16 Miura town Sasebo city
Nagasaki

Access

5 min from Sasebo station

Deadline for booking

Until 15:00 the day before

Available time to accept

1 0 : 0 0 ~ 1 7 : 0 0

Time required

Approximately 1.5 hrs

Available languages

☒ENG

Wearing Kimono Experiences



The overview of the contents

You can experience wearing traditional Japanese kimono. Please choose your favorite kimono and professionals put it on you, and you will take special hair setting and makeup that suit Kimono.

Basic information

- Contact information : Sasebo Tourism information center
- Opening : 9:00~18:00
- Website : <https://www.sasebo99.com/>
- TEL : + 8 1 - 9 5 6 - 2 3 - 3 3 6 9
- E-mail address : 99@sasebo-sight.com
- Available Languages : ☒ENG

Preventive measures for the new coronavirus

- Infection control of staffs / the facility
 - ☒Body temperature check
 - ☒Wearing mask
 - ☒Disinfection
 - ☒ventilation
- Infection control of guests
 - ☒Body temperature check
 - ☒Wearing mask
 - ☒Disinfection
 - ☐Keeping their contact info

Available to accept	Independents
Minimum number to operate	1 ~ 2 ppl
Sales price	7,000 JPY
Travel agency's fee	5 %
Venue	Kitagawa hair salon 5-1 Miyata town Sasebo city Nagasaki
Access	<By car> 10 min from Sasebo station <By bus> 1 min walk from "Miyata town" of Saihi bus
Deadline for booking	Until 17:00 the day before
Available time to accept	1 0 : 0 0 ~ 1 7 : 0 0
Time required	Approximately 2 hrs
Day off	Monday, First Sunday
Available Languages	<input checked="" type="checkbox"/> ENG

Painting & playing Spinning-top



The overview of the contents

You can experience of making only one original spinning-top in the world at a specialty store of Nagasaki Prefecture's craft "Sasebo Koma (spinning-top)". You can also learn how to turn a spinning-top.

*** You can watch the explanation movie in English / Korean / Chinese**

Basic information

- Contact information : Sasebo Tourism information center
- Opening : 9:00~18:00
- Website : <https://www.sasebo99.com/>
- TEL : + 8 1 - 9 5 6 - 2 3 - 3 3 6 9
- E-mail address : 99@sasebo-sight.com
- Available Languages : ☒ENG

Preventive measures for the new coronavirus

- Infection control of staffs / the facility
 - ☒Body temperature check ☒Wearing mask ☒Disinfection ☒ventilation
- Infection control of guests
 - ☐Body temperature check ☒Wearing mask ☒Disinfection ☐Keeping their contact info

Available to accept	Small groups & Independents
Minimum number to operate	2 ~ 4 ppl
Sales price	7,500 JPY
Travel agency's fee	5 %
Venue	Sasebo Koma honpo(spinning-top store) 9-13 Shimanji town Sasebo city Nagasaki
Access	5 min from Sasebo station
Deadline for booking	Until 12:00 the day before
Available time to accept	10 : 00~12 : 00 / 13 : 00~15 : 00
Time required	Approximately 1.5 hrs
Closed	Dec~Feb
Available languages	<input checked="" type="checkbox"/> ENG

Accommodation list in Sasebo city



What is “Team NAGASAKI SAFETY”?

The safety and security certification mark at the facilities in Nagasaki

With the cooperation of Nagasaki University, Nagasaki Prefecture is carrying out the program as "Team NAGASAKI SAFETY" and operates a certification system for safety and security that the public and private teams work together.

Certified facilities is working on preventive measures for the new coronavirus in accordance with the guidelines supervised by Nagasaki University.

In the procedures of certification, the auditor conducts on-site inspections, and after the certification, regular inspections should be executed to ensure safety and security so that you can truly enjoy "staying" , "eating" and "playing“ in Nagasaki.

Tenkuno yado Yamanoren



Basic information

- Contact information : Tenkuno yado Yamanoren
- Website : <http://www.yamanoren.co.jp/>
- TEL : + 8 1 - 9 5 6 - 7 6 - 2 9 0 0

Address

316 Uenoharaa Sechibaru town Sasebo city
Nagasaki

Access

<By car> 30 min from Sasebo
station

North part



Number of guest rooms : 20 rooms / Occupancy : 72 ppl

- Twin-bed room : 10 ■ Japanese style room : 8
- Western & Japanese style room : 1 ■ Barrier-free room : 1

Preventive measures for the new coronavirus

- Infection control of staffs / the facility
 - ☒ Body temperature check ☒ Wearing mask ☒ Disinfection ☒ ventilation
- Infection control of guests
 - ☒ Body temperature check ☒ Wearing mask ☒ Disinfection ☒ Keeping their contact info

Available languages

- Staff ☐ ENG ☐ CHN ☐ KOR
- Displays in the hotel ☐ ENG ☐ CHN ☐ KOR
- Displays in the room ☐ ENG ☐ CHN ☐ KOR

Barrier-free

- Shared areas ☒ Toilet ☒ Bathroom ☒ Others
- In guest rooms ☒ Room ☒ Toilet ☒ Bathroom

Wheelchair-accessible guest room

✓

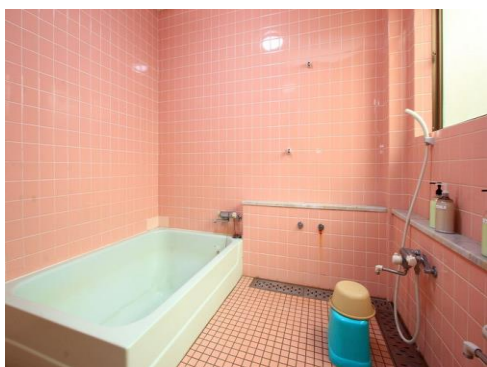
Hot spring/ Large public bath

✓

With pets

× (Assisting dogs are available)

Guest house Uminosachi



Basic information

- Contact information : Guest house Uminosachi
- Website : <https://www.resol-sasebo.com/>
- TEL : + 8 1 - 9 5 6 - 7 7 - 5 1 1 0

Address

388-27 Nagushi Shikamachi town Sasebo city
Nagasaki

Access

<By car> 45 min from Sasebo
station

North part



Number of guest rooms : 6 / Occupancy : 18 ppl

■ Japanese style room : 6

Preventive measures for the new coronavirus

■ Infection control of staffs / the facility

☒ Body temperature check ☒ Wearing mask ☒ Disinfection ☒ Ventilation

■ Infection control of guests

☒ Body temperature check ☒ Wearing mask ☒ Disinfection ☒ Keeping their contact info

Available languages

■ Staff ☐ ENG ☐ CHN ☐ KOR

■ Displays in the hotel ☐ ENG ☐ CHN ☐ KOR

■ Displays in the room ☐ ENG ☐ CHN ☐ KOR

Barrier-free

■ Shared areas ☐ Toilet ☐ Bathroom ☐ Others

■ In guest rooms ☐ Room ☐ Toilet ☐ Bathroom

Wheelchair-accessible guest room

×

Hot spring/ Large public bath

✓ (Sharing toilet and
bathroom)

With pets

×

Hotel Flags Kujukushima



Basic information

- Contact information : Hotel Flags Kujukushima
- Website : <https://flags99.jp/>
- TEL : + 8 1 - 9 5 6 - 2 8 - 2 1 1 1

Address 740 Kashimae town Sasebo city Nagasaki

Access <By car> 15 min from Sasebo station
<By bus> 8 min walk from "Kashimae iriguchi" of Saihi bus

Kujukushima



Number of guest rooms : 72 / Occupancy : 289 ppl

- Twin-bed room : 16 ■ Japanese style room : 38
- Western & Japanese style room : 12 ■ Other : 1

Preventive measures for the new coronavirus

- Infection control of staffs / the facility
- ☒ Body temperature check ☒ Wearing mask ☒ Disinfection ☒ ventilation
- Infection control of guests
- ☒ Body temperature check ☒ Wearing mask ☒ Disinfection ☒ Keeping their contact info

Available languages

- Staff ☒ ENG ☐ CHN ☐ KOR
- Displays in the hotel ☒ ENG ☐ CHN ☒ KOR
- Displays in the room ☒ ENG ☐ CHN ☐ KOR

Barrier-free

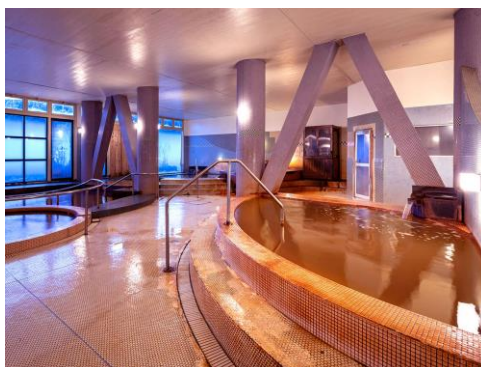
- Shared areas ☒ Toilet ☐ Bathroom ☒ Others
- In guest rooms ☐ Room ☐ Toilet ☐ Bathroom

Wheelchair-accessible guest room ✓

Hot spring/ Large public bath ✓

With pets X

Kujukushima Seaside terrace Hotel & Spa Hanamizuki



Basic information

- Contact information : Kujukushima Seaside terrace Hotel & Spa Hanamizuki
- Website : <https://www.saspa99.jp/>
- TEL : + 8 1 - 9 5 6 - 2 8 - 5 1 5 1

Address 1129 Kashimae town Sasebo city Nagasaki

Access <By car> 15 min from Sasebo town
<By bus> 10 min walk from "Kakomae iriguchi " of Saihi bus

Kujukushima



Number of guest rooms : 11 / Occupancy : 100 ppl

■ Japanese style room : 11

Preventive measures for the new coronavirus

■ Infection control of staffs / the facility

☒ Body temperature check ☒ Wearing mask ☒ Disinfection ☒ Ventilation

■ Infection control of guests

☒ Body temperature check ☒ Wearing mask ☒ Disinfection ☒ Keeping their contact info

Available languages

- Staff ☒ ENG ☐ CHN ☐ KOR
- Displays in the hotel ☒ ENG ☐ CHN ☐ KOR
- Displays in the room ☐ ENG ☐ CHN ☐ KOR

Barrier-free

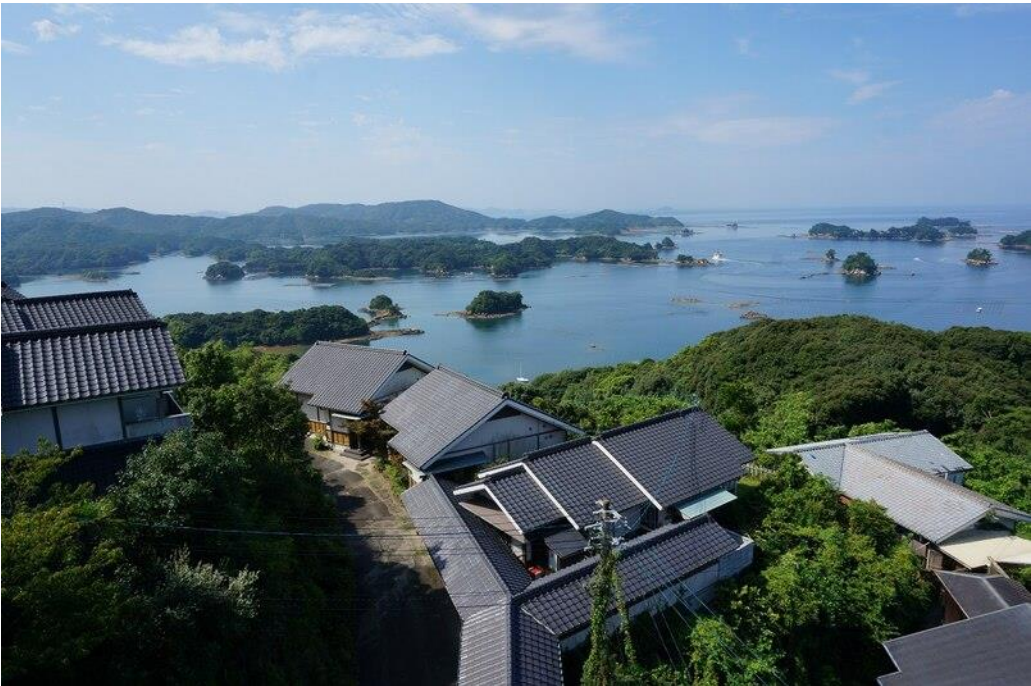
- Shared areas ☐ Toilet ☐ Bathroom ☐ Others
- In guest rooms ☐ Room ☐ Toilet ☐ Bathroom

Wheelchair-accessible guest room ✓

Hot spring/ Large public bath ✓

With pets X

Shiosai no yado “Hanaichi”



Basic information	
■ Contact information : Shiosai no yado “Hanaichi”	
■ Website	: https://sasebo871.com/
■ TEL	: + 8 1 – 9 5 6 – 2 8 – 5 5 3 3
Address	190-1 Funakoshi town Sasebo city Nagasaki
Access	<By car> 15 min from Sasebo station

Kujukushima



Number of guest rooms: 5 / Occupancy : 20 ppl	
■ Japanese style room : 5	
Preventive measures for the new coronavirus	
■ Infection control of staffs / the facility	
<input checked="" type="checkbox"/> Body temperature check <input checked="" type="checkbox"/> Wearing mask <input checked="" type="checkbox"/> Disinfection <input checked="" type="checkbox"/> ventilation	
■ Infection control of guests	
<input checked="" type="checkbox"/> Body temperature check <input checked="" type="checkbox"/> Wearing mask <input checked="" type="checkbox"/> Disinfection <input checked="" type="checkbox"/> Keeping their contact info	
Available languages	
■ Staff <input type="checkbox"/> ENG <input type="checkbox"/> CHN <input type="checkbox"/> KOR	
■ Displays in the hotel <input type="checkbox"/> ENG <input type="checkbox"/> CHN <input type="checkbox"/> KOR	
■ Displays in the room <input type="checkbox"/> ENG <input type="checkbox"/> CHN <input type="checkbox"/> KOR	
Barrier-free	
■ Shared areas <input type="checkbox"/> Toilet <input type="checkbox"/> Bathroom <input type="checkbox"/> Others	
■ In guest rooms <input type="checkbox"/> Room <input type="checkbox"/> Toilet <input type="checkbox"/> Bathroom	
Wheelchair-accessible guest room	×
Hot spring/ Large public bath	×
With pets	× (Assisting dogs are available)

Toyoko INN Saseboekimae



Basic information

- Contact information : Toyoko INN Sasebo ekimae
- Website : <https://www.toyoko-inn.com/index.php/search/detail/00187.html>
- TEL : + 8 1 - 9 5 6 - 4 2 - 1 0 4 5

Address 1-4 Miura town Sasebo city Nagasaki

Access In front of Sasebo station

Downtown



Number of guest rooms: 272 / Occupancy : 377 ppl

- Single-bed room : 219 ■ Double-bed room : 26
- Twin-bed room : 26

Preventive measures for the new coronavirus

- Infection control of staffs / the facility
 - ☒ Body temperature check ☒ Wearing mask ☒ Disinfection ☒ ventilation
- Infection control of guests
 - ☒ Body temperature check ☒ Wearing mask ☒ Disinfection ☒ Keeping their contact info

Available languages

- Staff ☒ ENG ☐ CHN ☐ KOR
- Displays in the hotel ☒ ENG ☐ CHN ☐ KOR
- Displays in the room ☒ ENG ☐ CHN ☐ KOR

Barrier-free

- Shared areas ☒ Toilet ☒ Bathroom ☒ Others
- In guest rooms ☒ Room ☒ Toilet ☒ Bathroom

Wheelchair-accessible guest room ✓

Hot spring/ Large public bath ×

With pets × (Assisting dogs are available)

Quintessa Hotel Sasebo



Basic information

- Contact information : Quintessa Hotel Sasebo
- Website : <http://quintessahotels.com/sasebo/>
- TEL : + 8 1 - 9 5 6 - 2 4 - 0 2 0 0

Address 5-24 Minato town Sasebo city

Access <By car> 6 min from Sasebo station
<By bus> 3 min walk from "Matsuura Chuo koenguchi" of Saihi bus

Downtown



Number of guest rooms: 162 / Occupancy : 339 ppl

- Double-bed room : 105 ■ Twin-bed room : 53
- Western style sweet room : 2

Preventive measures for the new coronavirus

- Infection control of staffs / the facility
 - ☒ Body temperature check ☒ Wearing mask ☒ Disinfection ☒ ventilation
- Infection control of guests
 - ☒ Body temperature check ☒ Wearing mask ☒ Disinfection ☒ Keeping their contact info

Available languages

- Staff ☒ ENG ☐ CHN ☐ KOR
- Displays in the hotel ☒ ENG ☐ CHN ☐ KOR
- Displays in the room ☒ ENG ☐ CHN ☐ KOR

Barrier-free

- Shared areas ☐ Toilet ☐ Bathroom ☐ Others
- In guest rooms ☐ Room ☐ Toilet ☐ Bathroom

Wheelchair-accessible guest room ✓

Hot spring/ Large public bath ×

With pets × (Assisting dogs are available)

Central Hotel Sasebo



Basic information

- Contact information : Central hotel Sasebo
- Website : <https://www.sasebo.co.jp/>
- TEL : + 8 1 - 9 5 6 - 2 5 - 0 0 0 1

Address 3-2 Kamikyo town Sasebo city Nagasaki

Access 6 min walk from Sasebo station

Downtown

◆◆◆◆◆
**team NAGASAKI
SAFETY**

Number of guest rooms: 170 / Occupancy : 241 ppl

- Single-bed room : 118
- Double-bed room : 8
- Twin-bed room : 26
- Western style sweet room : 2
- Japanese style room : 6
- Western & Japanese style room : 2
- Other : 4

Preventive measures for the new coronavirus

- Infection control of staffs / the facility
 - ☒ Body temperature check
 - ☒ Wearing mask
 - ☒ Disinfection
 - ☒ Ventilation
- Infection control of guests
 - ☒ Body temperature check
 - ☒ Wearing mask
 - ☒ Disinfection
 - ☒ Keeping their contact info

Available languages

- Staff ☒ ENG ☐ CHN ☐ KOR
- Displays in the hotel ☐ ENG ☐ CHN ☐ KOR
- Displays in the room ☒ ENG ☐ CHN ☐ KOR

Barrier-free

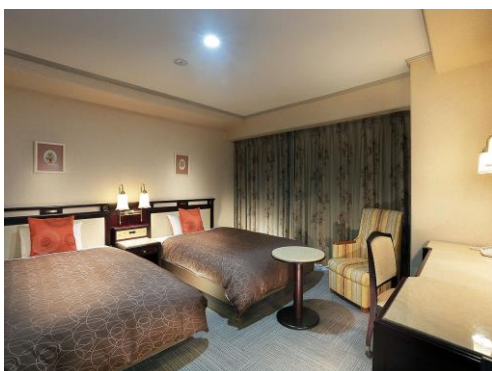
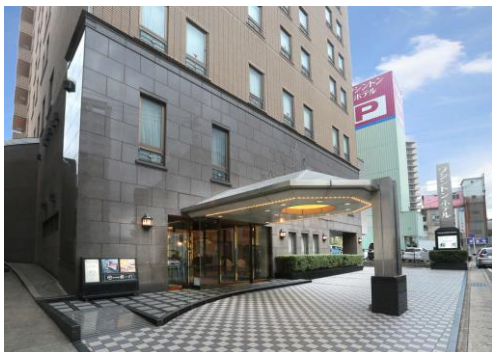
- Shared areas ☒ Toilet ☒ Bathroom ☒ Others
- In guest rooms ☒ Room ☒ Toilet ☒ Bathroom

Wheelchair-accessible guest room ✓

Hot spring/ Large public bath ×

With pets ✓

Sasebo Washington hotel



Basic information

- Contact information : Sasebo Washington hotel
- Website : <https://washington-hotels.jp/sasebo/>
- TEL : + 8 1 - 9 5 6 - 3 2 - 8 0 1 1

Address 12-7 Shiomi town Sasebo city Nagasaki

Access 5 min walk from Sasebo station

Downtown



Number of guest rooms: 190 / Occupancy : 213 ppl

- Single-bed room : 167 ■ Double-bed room:7
- Twin-bed room : 16

Preventive measures for the new coronavirus

- Infection control of staffs / the facility
 - ☒ Body temperature check ☒ Wearing mask ☒ Disinfection ☒ ventilation
- Infection control of guests
 - ☒ Body temperature check ☒ Wearing mask ☒ Disinfection ☒ Keeping their contact info

Available languages

- Staff ☒ ENG ☐ CHN ☐ KOR
- Displays in the hotel ☒ ENG ☒ CHN ☒ KOR
- Displays in the room ☒ ENG ☐ CHN ☐ KOR

Barrier-free

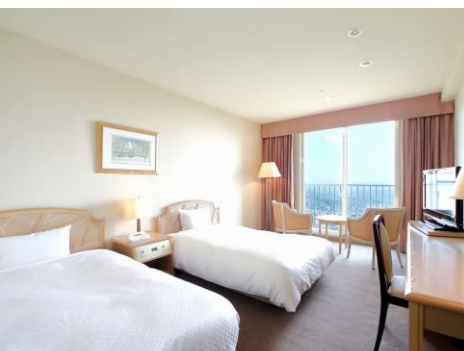
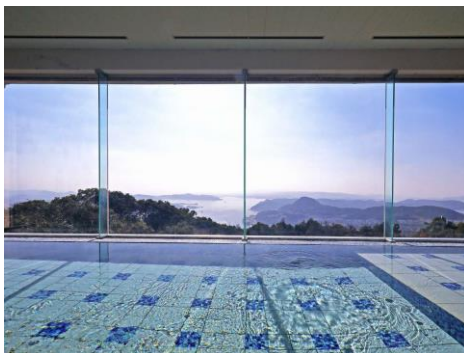
- Shared areas ☐ Toilet ☐ Bathroom ☒ Others
- In guest rooms ☐ Room ☐ Toilet ☐ Bathroom

Wheelchair-accessible guest room ×

Hot spring/ Large public bath ×

With pets × (Assisting dogs are available)

Yumihari no oka Hotel



Basic information

- Contact information : Yumihari no oka Hotel
- Website : <https://www.yumihari.com/>
- TEL : + 8 1 - 9 5 6 - 2 6 - 0 8 0 0

Address 510 Udogoe town Sasebo city Nagasaki

Access <By car> 20 min from Sasebo station

Downtown



Number of guest rooms: 105 / Occupancy : 210 ppl

- Single-bed room : 16 ■ Twin-bed room : 87
- Western style sweet room : 2

Preventive measures for the new coronavirus

- Infection control of staffs / the facility
 - ☒ Body temperature check ☒ Wearing mask ☒ Disinfection ☒ ventilation
- Infection control of guests
 - ☒ Body temperature check ☒ Wearing mask ☒ Disinfection ☒ Keeping their contact info

Available languages

- Staff ☒ ENG ☐ CHN ☐ KOR
- Displays in the hotel ☒ ENG ☐ CHN ☐ KOR
- Displays in the room ☐ ENG ☐ CHN ☐ KOR

Barrier-free

- Shared areas ☒ Toilet ☐ Bathroom ☒ Others
- In guest rooms ☐ Room ☐ Toilet ☐ Bathroom

Wheelchair-accessible guest room

✓

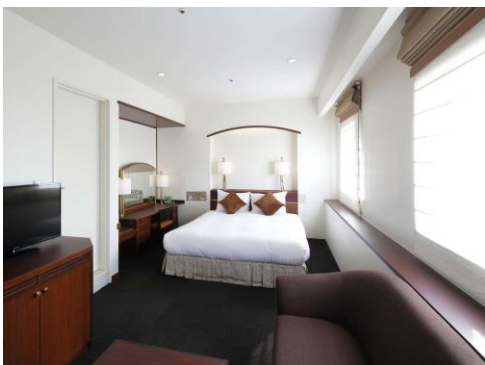
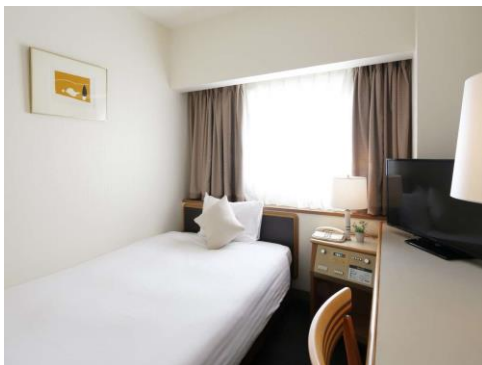
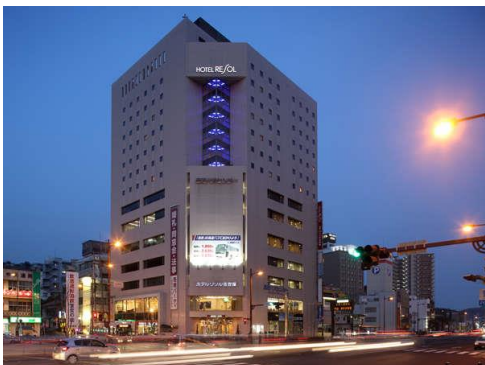
Hot spring/ Large public bath

✓

With pets

× (Assisting dogs are available)

Hotel Resol Sasebo



Basic information

- Contact information : Hotel Resol Sasebo
- Website : <https://www.resol-sasebo.com/>
- TEL : + 8 1 - 9 5 6 - 2 4 - 9 2 6 9

Address 8-17 Shirahae town Sasebo city Nagasaki

Access 3 min walk from Sasebo station

Downtown



Number of guest rooms: 152 / Occupancy : 204 ppl

- Single-bed room : 103 ■ Double-bed room:1
- Twin-bed room : 48

Preventive measures for the new coronavirus

- Infection control of staffs / the facility
 - ☒ Body temperature check ☒ Wearing mask ☒ Disinfection ☒ ventilation
- Infection control of guests
 - ☒ Body temperature check ☒ Wearing mask ☒ Disinfection ☒ Keeping their contact info

Available languages

- Staff ☒ ENG ☐ CHN ☐ KOR
- Displays in the hotel ☒ ENG ☒ CHN ☒ KOR
- Displays in the room ☒ ENG ☐ CHN ☐ KOR

Barrier-free

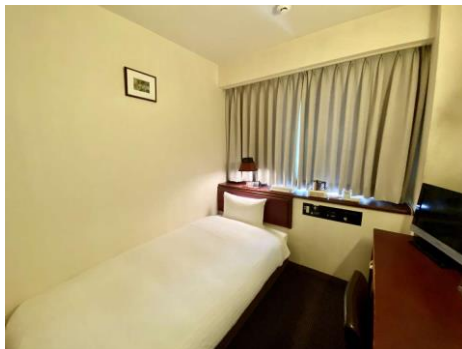
- Shared areas ☐ Toilet ☐ Bathroom ☐ Others
- In guest rooms ☐ Room ☐ Toilet ☐ Bathroom

Wheelchair-accessible guest room ×

Hot spring/ Large public bath ×

With pets × (Assisting dogs are available)

Smile Hotel Sasebo



Basic information

- Contact information : Smile Hotel Sasebo
- Website : <https://smile-hotels.com/hotels/show/sasebo>
- TEL : + 8 1 - 9 5 6 - 2 4 - 5 9 3 1

Address 8-8 Tokiwa town Sasebo city Nagasaki

Access 7 min walk from Sasebo station

Downtown



Number of guest rooms: 131 / Occupancy : 168 ppl

- Single-bed room : 103 ■ Double-bed room:1
- Twin-bed room : 48 ■ Other : 1

Preventive measures for the new coronavirus

- Infection control of staffs / the facility
 - ☒ Body temperature check ☒ Wearing mask ☒ Disinfection ☒ ventilation
- Infection control of guests
 - ☒ Body temperature check ☒ Wearing mask ☒ Disinfection ☒ Keeping their contact info

Available languages

- Staff ☒ ENG ☐ CHN ☐ KOR
- Displays in the hotel ☒ ENG ☐ CHN ☐ KOR
- Displays in the room ☒ ENG ☐ CHN ☐ KOR

Barrier-free

- Shared areas ☐ Toilet ☐ Bathroom ☒ Others
- In guest rooms ☒ Room ☐ Toilet ☐ Bathroom

Wheelchair-accessible guest room

✓

Hot spring/ Large public bath

×

With pets

× (Assisting dogs are available)

Hotel Lotus house Sasebo



Basic information	
■ Contact information : Hotel Lotus house Sasebo	
■ Website	: https://www.hotel-lotushouse.com/
■ TEL	: + 8 1 - 9 5 6 - 2 2 - 7 7 1 7
Address	8-17 Kogetsu town Sasebo city Nagasaki
Access	<By car> 6 min from Sasebo station <By bus> 7 min walk from “Shimanose” of Saihi bus

Downtown



Number of guest rooms: 82／Occupancy : 138 ppl	
■ Single-bed room : 40	■ Double-bed room:34
■ Twin-bed room : 6	■ Western style sweet room: 2
Preventive measures for the new coronavirus	
■ Infection control of staffs / the facility	
<input checked="" type="checkbox"/> Body temperature check	<input checked="" type="checkbox"/> Wearing mask <input checked="" type="checkbox"/> Disinfection <input checked="" type="checkbox"/> ventilation
■ Infection control of guests	
<input checked="" type="checkbox"/> Body temperature check	<input checked="" type="checkbox"/> Wearing mask <input checked="" type="checkbox"/> Disinfection <input checked="" type="checkbox"/> Keeping their contact info
Available languages	
■ Staff	<input checked="" type="checkbox"/> ENG <input type="checkbox"/> CHN <input type="checkbox"/> KOR
■ Displays in the hotel	<input checked="" type="checkbox"/> ENG <input type="checkbox"/> CHN <input type="checkbox"/> KOR
■ Displays in the room	<input checked="" type="checkbox"/> ENG <input type="checkbox"/> CHN <input type="checkbox"/> KOR
Barrier-free	
■ Shared areas	<input type="checkbox"/> Toilet <input type="checkbox"/> Bathroom <input type="checkbox"/> Others
■ In guest rooms	<input type="checkbox"/> Room <input type="checkbox"/> Toilet <input type="checkbox"/> Bathroom
Wheelchair-accessible guest room	×
Hot spring/ Large public bath	×
With pets	×

Sun West Hotel Sasebo



Basic information

- Contact information : Sun West Hotel Sasebo
- Website : <https://www.s-sasebo.com/>
- TEL : + 8 1 - 9 5 6 - 2 6 - 0 5 0 5

Address 1-15 Motoshima town Sasebo city Nagasaki

Access
<By car> 5 min from Sasebo station
<By bus> 4 min walk from “Kyo machi” of Saihi bus

Downtown



Number of guest rooms: 106 / Occupancy : 119 ppl

- Single-bed room : 95 ■ Double-bed room:4
- Twin-bed room : 7

Preventive measures for the new coronavirus

- Infection control of staffs / the facility
 - ☒ Body temperature check ☒ Wearing mask ☒ Disinfection ☒ ventilation
- Infection control of guests
 - ☒ Body temperature check ☒ Wearing mask ☒ Disinfection ☒ Keeping their contact info

Available languages

- Staff ☒ ENG ☐ CHN ☐ KOR
- Displays in the hotel ☐ ENG ☐ CHN ☐ KOR
- Displays in the room ☐ ENG ☐ CHN ☐ KOR

Barrier-free

- Shared areas ☐ Toilet ☐ Bathroom ☒ Others
- In guest rooms ☐ Room ☐ Toilet ☐ Bathroom

Wheelchair-accessible guest room ✓

Hot spring/ Large public bath ×

With pets × (Assisting dogs are available)

Leo Plaza Hotel Sasebo



Basic information

- Contact information : Leo Plaza Hotel Sasebo
- Website : <https://www.leoplazahotelsasebo.com/>
- TEL : + 8 1 - 9 5 6 - 2 2 - 4 1 4 1

Address 4-28 Miura town Sasebo city Nagasaki

Access 5 min walk from Sasebo station

Downtown



Number of guest rooms: 38 / Occupancy : 90 ppl

- Single-bed room : 27 ■ Double-bed room:5
- Twin-bed room : 5 ■ Other : 1

Preventive measures for the new coronavirus

- Infection control of staffs / the facility
 - ☒ Body temperature check ☒ Wearing mask ☒ Disinfection ☒ Ventilation
- Infection control of guests
 - ☒ Body temperature check ☒ Wearing mask ☒ Disinfection ☒ Keeping their contact info

Available languages

- Staff ☒ ENG ☐ CHN ☐ KOR
- Displays in the hotel ☒ ENG ☐ CHN ☐ KOR
- Displays in the room ☒ ENG ☐ CHN ☐ KOR

Barrier-free

- Shared areas ☐ Toilet ☐ Bathroom ☒ Others
- In guest rooms ☐ Room ☐ Toilet ☐ Bathroom

Wheelchair-accessible guest room

×

Hot spring/ Large public bath

✓

With pets

× (Assisting dogs are available)

Sasebo Green Hotel



Basic information

- Contact information : Sasebo Green Hotel
- Website : <https://www.hotelsasebo.com/>
- TEL : + 8 1 - 9 5 6 - 2 5 - 6 2 6 1

Address 4-1 Miura town Sasebo city Nagasaki

Access 3 min walk from Sasebo station

Downtown



Number of guest rooms: 74 / Occupancy : 89 ppl

■ Single-bed room : 59 ■ Twin-bed room : 15

Preventive measures for the new coronavirus

- Infection control of staffs / the facility
 - ☒ Body temperature check ☒ Wearing mask ☒ Disinfection ☒ ventilation
- Infection control of guests
 - ☒ Body temperature check ☒ Wearing mask ☒ Disinfection ☒ Keeping their contact info

Available languages

- Staff ☒ ENG ☐ CHN ☐ KOR
- Displays in the hotel ☒ ENG ☒ CHN ☒ KOR
- Displays in the room ☒ ENG ☒ CHN ☒ KOR

Barrier-free

- Shared areas ☒ Toilet ☐ Bathroom ☒ Others
- In guest rooms ☐ Room ☐ Toilet ☐ Bathroom

Wheelchair-accessible guest room ×

Hot spring/ Large public bath ×

With pets × (Assisting dogs are available)

Grand First INN Sasebo



Basic information	
■ Contact information : Grand First INN Sasebo	
■ Website	: http://www.firstinn.co.jp/s-index.html
■ TEL	: + 8 1 - 9 5 6 - 2 2 - 8 2 8 1
Address	7-1 Shiohama town Sasebo city Nagasaki
Access	7 min walk from Sasebo station

Downtown



Number of guest rooms: 58 / Occupancy : 80 ppl	
■ Single-bed room : 40 ■ Twin-bed room : 12 ■ Japanese style room : 6	
Preventive measures for the new coronavirus	
■ Infection control of staffs / the facility ☑ Body temperature check ☑ Wearing mask ☑ Disinfection ☑ ventilation	
■ Infection control of guests ☑ Body temperature check ☑ Wearing mask ☑ Disinfection ☑ Keeping their contact info	
Available languages	
■ Staff ☑ ENG □ CHN □ KOR ■ Displays in the hotel □ ENG □ CHN □ KOR ■ Displays in the room ☑ ENG □ CHN □ KOR	
Barrier-free	
■ Shared areas □ Toilet □ Bathroom □ Others ■ In guest rooms □ Room □ Toilet □ Bathroom	
Wheelchair-accessible guest room	×
Hot spring/ Large public bath	×
With pets	×

Business Kaneko Hotel



Basic information	
■ Contact information : Business Kaneko Hotel	
■ TEL	: + 8 1 - 9 5 6 - 2 4 - 5 4 4 0
Address	8-23 Tonoo town Sasebo city Nagasaki
Access	7 min walk from Sasebo station

Downtown



Number of guest rooms: 22 / Occupancy : 70 ppl

■ Japanese style room : 22

Preventive measures for the new coronavirus

■ Infection control of staffs / the facility
☒Body temperature check ☒Wearing mask ☒Disinfection ☒ventilation

■ Infection control of guests
☒Body temperature check ☒Wearing mask ☒Disinfection ☒Keeping their contact info

Available languages

■ Staff ☒ENG ☐CHN ☐KOR
■ Displays in the hotel ☐ENG ☐CHN ☐KOR
■ Displays in the room ☐ENG ☐CHN ☐KOR

Barrier-free

■ Shared areas ☐Toilet ☐Bathroom ☐Others
■ In guest rooms ☐Room ☐Toilet ☐Bathroom

Wheelchair-accessible guest room ×

Hot spring/ Large public bath ×

With pets ×

Sasebo Terminal Hotel



Basic information	
■ Contact information : Sasebo Terminal Hotel	
■ TEL	: + 8 1 - 9 5 6 - 2 2 - 3 3 0 0
Address	7-4 Shirahae town Sasebo city Nagasaki
Access	3 min walk from Sasebo station

Downtown



Number of guest rooms: 34 / Occupancy : 64 ppl	
■ Single-bed room : 18 ■ Twin-bed room : 2 ■ Japanese style room : 14	
Preventive measures for the new coronavirus	
■ Infection control of staffs / the facility ☑ Body temperature check ☑ Wearing mask ☑ Disinfection ☑ ventilation	
■ Infection control of guests ☑ Body temperature check ☑ Wearing mask ☑ Disinfection ☑ Keeping their contact info	
Available languages	
■ Staff ☑ ENG □ CHN □ KOR ■ Displays in the hotel ☑ ENG ☑ CHN ☑ KOR ■ Displays in the room □ ENG □ CHN □ KOR	
Barrier-free	
■ Shared areas □ Toilet □ Bathroom ☑ Others ■ In guest rooms □ Room □ Toilet □ Bathroom	
Wheelchair-accessible guest room	×
Hot spring/ Large public bath	×
With pets	×

Hotel Byblos



Downtown

Number of guest rooms:42/Occupancy : 61 ppl

■ Single-bed room : 39 ■ Twin-bed room : 3

Preventive measures for the new coronavirus

■ Infection control of staffs / the facility

☒Body temperature check ☒Wearing mask ☒Disinfection ☒ventilation

■ Infection control of guests

☒Body temperature check ☒Wearing mask ☒Disinfection ☒Keeping their contact info

Available languages

■ Staff ☒ENG ☐CHN ☐KOR

■ Displays in the hotel ☒ENG ☒CHN ☒KOR

■ Displays in the room ☐ENG ☐CHN ☐KOR

Barrier-free

■ Shared areas ☐Toilet ☐Bathroom ☐Others

■ In guest rooms ☐Room ☐Toilet ☐Bathroom

Wheelchair-accessible guest room

×

Hot spring/ Large public bath

×

With pets

×

Basic information

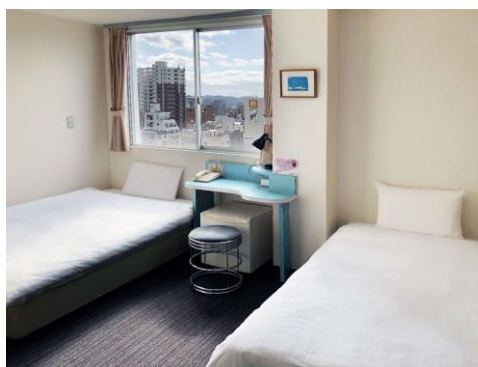
■ Contact information : Hotel Byblos

■ Website : <http://www.sasebo-byblos.com/>

■ TEL : + 8 1 - 9 5 6 - 2 2 - 7 7 1 7

Address 5-3 Koten town Sasebo city Nagasaki

Access <By car> 5 min from Sasebo station
<By bus> 6 min walk from "Kyomachi " of Saihi



Hotel Nikko Huis Ten Bosch



Basic information	
■ Contact information : Hotel Nikko Huis Ten Bosch	
■ Website	: https://www.jrhtb.hotelokura.co.jp/
■ TEL	: + 8 1 - 9 5 6 - 5 8 - 7 1 1 1
Address	6 Huis Ten Bosch town Sasebo city Nagasaki
Access	<By car> 20 min from Sasebo station <By JR> 10 min walk from “Huis Ten Bosch station”



Number of guest rooms:377／Occupancy : 844 ppl

- Single-bed room : 5 ■ Double-bed room:18
- Twin-bed room : 268 ■ Western style sweet room:3
- Other : 83

Preventive measures for the new coronavirus

- Infection control of staffs / the facility
 - ☒Body temperature check ☒Wearing mask ☒Disinfection ☒ventilation
- Infection control of guests
 - ☒Body temperature check ☒Wearing mask ☒Disinfection ☒Keeping their contact info

Available languages

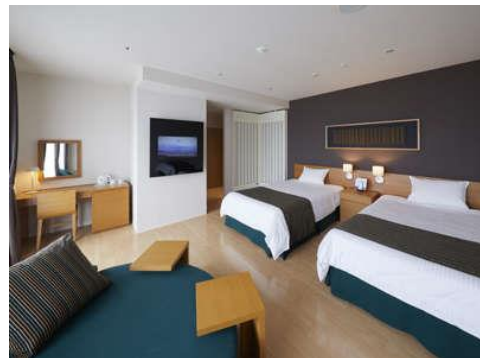
- Staff ☒ENG ☒CHN ☒KOR
- Displays in the hotel ☒ENG ☒CHN ☒KOR
- Displays in the room ☐ENG ☐CHN ☐KOR

Barrier-free

- Shared areas ☐Toilet ☐Bathroom ☒Others
- In guest rooms ☒Room ☒Toilet ☒Bathroom

Wheelchair-accessible guest room	✓
Hot spring/ Large public bath	✓
With pets	× (Assisting dogs are available)

Henna Hotel



Basic information	
■ Contact information : Henna Hotel	
■ Website	: https://www.h-n-h.jp/
■ TEL	: + 8 1 - 5 7 0 - 0 6 4 - 1 1 0
Address	Huis Ten Bosch town Sasebo city Nagasaki
Access	<By car> 20 min from Sasebo Station < By JR> 15 min walk from “Huis Ten Bosch” station

Huis Ten Bosch



Number of guest rooms:200／Occupancy : 737 ppl

■ Western style room : 144 ■ Japanese style room ; 56

Preventive measures for the new coronavirus

- Infection control of staffs / the facility
 - ☒Body temperature check ☒Wearing mask ☒Disinfection ☒ventilation
- Infection control of guests
 - ☒Body temperature check ☒Wearing mask ☒Disinfection ☒Keeping their contact info

Available languages

- Staff
 - ☒ENG ☐CHN ☐KOR
- Displays in the hotel
 - ☒ENG ☐CHN ☐KOR
- Displays in the room
 - ☐ENG ☐CHN ☐KOR

Barrier-free

- Shared areas
 - ☒Toilet ☐Bathroom ☒Others
- In guest rooms
 - ☒Room ☒Toilet ☒Bathroom

Wheelchair-accessible guest room

✓

Hot spring/ Large public bath

×

With pets

× (Assisting dogs are available)

Hotel Okura JR Huis Ten Bosch



Basic information

- Contact information : Hotel Okura JR Huis Ten Bosch
- Website : <https://www.jrhtb.hotelokura.co.jp/>
- TEL : + 8 1 - 9 5 6 - 5 8 - 7 1 1 1

Address 10 Huis Ten Bosch town Sasebo city Nagasaki

Access <By car> 20 minutes from Sasebo station
<By JR> 8 min walk from "Huis Ten Bosch" station

Huis Ten Bosch



Number of guest rooms:320/Occupancy : 675 ppl

- Double-bed room ; 6 ■ Twin-bed room : 298
- Western style sweet room : 5 ■ Japanese style room : 1
- Japanese & Western style room : 2 ■ Other : 8

Preventive measures for the new coronavirus

- Infection control of staffs / the facility
 - ☒Body temperature check ☒Wearing mask ☒Disinfection ☒ventilation
- Infection control of guests
 - ☒Body temperature check ☒Wearing mask ☒Disinfection ☒Keeping their contact info

Available languages

- Staff ☒ENG ☐CHN ☐KOR
- Displays in the hotel ☒ENG ☐CHN ☐KOR
- Displays in the room ☒ENG ☐CHN ☐KOR

Barrier-free

- Shared areas ☒Toilet ☒Bathroom ☒Others
- In guest rooms ☐Room ☐Toilet ☐Bathroom

Wheelchair-accessible guest room

×

Hot spring/ Large public bath

✓

With pets

× (Assisting dogs are available)

Hotel Europe



基本情報

- Contact information : Hotel Europe
- Website : <https://www.huistenbosch.co.jp/hotels/am/index>
- TEL : + 8 1 - 5 7 0 - 0 6 4 - 1 1 0

Address 7-7 Huis Ten Bosch town Sasebo city Nagasaki

Access <By car> 22 minutes from Sasebo station

Huis Ten Bosch

◆◆◆◆◆
team **NAGASAKI**
SAFETY

Number of guest rooms:310／Occupancy : 652 ppl

- Double-bed room : 20 ■ Twin-bed room : 280
- Western style sweet room : 10

Preventive measures for the new coronavirus

- Infection control of staffs / the facility
 - ☒Body temperature check ☒Wearing mask ☒Disinfection ☒ventilation
- Infection control of guests
 - ☒Body temperature check ☒Wearing mask ☒Disinfection ☒Keeping their contact info

Available languages

- Staff ☒ENG ☒CHN ☒KOR
- Displays in the hotel ☒ENG ☐CHN ☐KOR
- Displays in the room ☒ENG ☐CHN ☐KOR

Barrier-free

- Shared areas ☒Toilet ☐Bathroom ☒Others
- In guest rooms ☐Room ☐Toilet ☐Bathroom

Wheelchair-accessible guest room

×

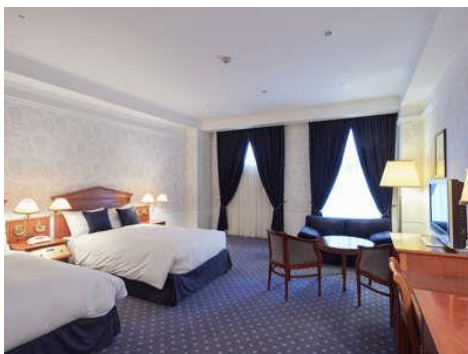
Hot spring/ Large public bath

×

With pets

× (Assisting dogs are available)

Hotel Amsterdam



Basic information

- Contact information : Hotel Amsterdam
- Website : <https://www.huistenbosch.co.jp/hotels/am/index>
- TEL : + 8 1 - 5 7 0 - 0 6 4 - 1 1 0

Address

7-7 Huis Ten Bosch town Sasebo city Nagasaki

Access

<By car> 22 minutes from Sasebo station

Huis Ten Bosch



Number of guest rooms:198/Occupancy : 575 ppl

- Double-bed room : 6 ■ Twin-bed room : 191
- Western style sweet room : 1

Preventive measures for the new coronavirus

- Infection control of staffs / the facility
 - ☒Body temperature check ☒Wearing mask ☒Disinfection ☒ventilation
- Infection control of guests
 - ☒Body temperature check ☒Wearing mask ☒Disinfection ☒Keeping their contact info

Available languages

- Staff ☒ENG ☐CHN ☐KOR
- Displays in the hotel ☐ENG ☐CHN ☐KOR
- Displays in the room ☐ENG ☐CHN ☐KOR

Barrier-free

- Shared areas ☒Toilet ☐Bathroom ☒Others
- In guest rooms ☐Room ☐Toilet ☐Bathroom

Wheelchair-accessible guest room

×

Hot spring/ Large public bath

×

With pets

× (Assisting dogs are available)

Water Mark Hotel Nagasaki Huis Ten Bosch



Basic information	
■ Contact information	: Water Mark Hotel Nagasaki Huis Ten Bosch
■ Website	: https://www.huistenbosch.co.jp/hotels/am/index
■ TEL	: + 8 1 - 9 5 6 - 2 7 - 0 5 0 5
Address	7-9 Huis Ten Bosch town Sasebo city Nagasaki
Access	<By car> 22 minutes from Sasebo station



Number of guest rooms:228／Occupancy : 500 ppl

- Single-bed room : 14 ■ Double-bed room:19
- Twin-bed room : 173

Preventive measures for the new coronavirus

- Infection control of staffs / the facility
 - ☒Body temperature check ☒Wearing mask ☒Disinfection ☒ventilation
- Infection control of guests
 - ☒Body temperature check ☒Wearing mask ☒Disinfection ☒Keeping their contact info

Available languages

- Staff ☒ENG ☒CHN ☐KOR
- Displays in the hotel ☒ENG ☐CHN ☐KOR
- Displays in the room ☐ENG ☐CHN ☐KOR

Barrier-free

- Shared areas ☒Toilet ☐Bathroom ☒Others
- In guest rooms ☐Room ☒Toilet ☐Bathroom

Wheelchair-accessible guest room	×
Hot spring/ Large public bath	×
With pets	× (Assisting dogs are available)

Forest villa



Basic information

- Contact information : Forest villa
- Website : <https://www.huistenbosch.co.jp/hotels/fv/index>
- TEL : + 8 1 - 5 7 0 - 0 6 4 - 3 0 0

Address 7-7 Huis Ten Bosch town Sasebo city Nagasaki

Access <By car> 22 minutes from Sasebo station

Huis Ten Bosch



Number of guest houses:99 / Occupancy : 416 ppl

Preventive measures for the new coronavirus

- Infection control of staffs / the facility
 - ☒ Body temperature check
 - ☒ Wearing mask
 - ☒ Disinfection
 - ☒ ventilation
- Infection control of guests
 - ☒ Body temperature check
 - ☒ Wearing mask
 - ☒ Disinfection
 - ☒ Keeping their contact info

Available languages

- Staff ☒ ENG ☒ CHN ☒ KOR
- Displays in the hotel ☒ ENG ☐ CHN ☐ KOR
- Displays in the room ☒ ENG ☐ CHN ☐ KOR

Barrier-free

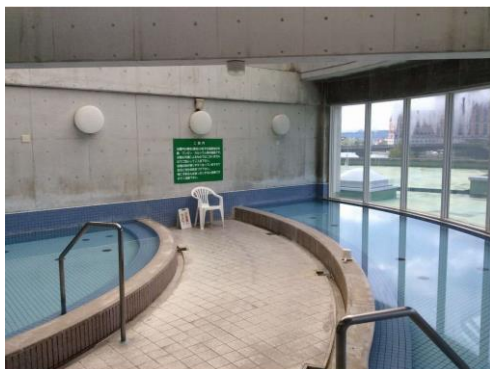
- Shared areas ☐ Toilet ☐ Bathroom ☒ Others
- In guest rooms ☐ Room ☐ Toilet ☐ Bathroom

Wheelchair-accessible guest room ×

Hot spring/ Large public bath ×

With pets ✓

Hotel Lorelei



Basic information

- Contact information : Hotel Lorelei
- Website : <http://www.lorelei.co.jp/>
- TEL : + 8 1 - 9 5 6 - 5 9 - 3 9 3 9

Address 449 Haenosaki town Sasebo city Nagasaki

Access <By car> 15 min from Sasebo station
<By JR> 2 min walk from "Huis Ten Bosch"

Huis Ten Bosch



Number of guest rooms: 95 / Occupancy : 286 ppl

- Twin-bed room : 75 ■ Western style sweet room : 1
- Western & Japanese style room : 15 ■ Other : 4

Preventive measures for the new coronavirus

- Infection control of staffs / the facility
 - ☒ Body temperature check ☒ Wearing mask ☒ Disinfection ☒ ventilation
- Infection control of guests
 - ☒ Body temperature check ☒ Wearing mask ☒ Disinfection ☒ Keeping their contact info

Available languages

- Staff ☒ ENG ☐ CHN ☐ KOR
- Displays in the hotel ☒ ENG ☒ CHN ☒ KOR
- Displays in the room ☒ ENG ☒ CHN ☒ KOR

Barrier-free

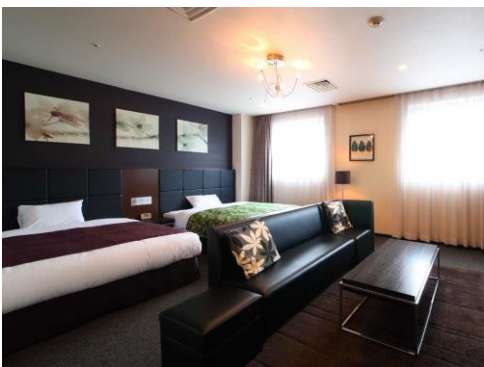
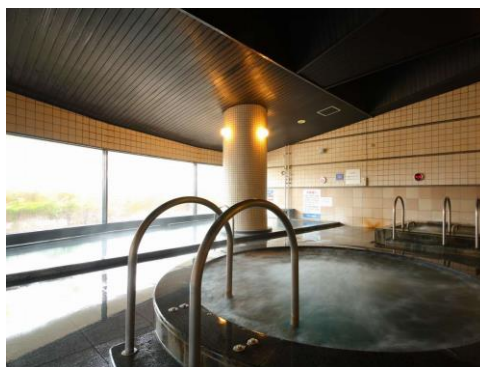
- Shared areas ☒ Toilet ☒ Bathroom ☒ Others
- In guest rooms ☒ Room ☒ Toilet ☒ Bathroom

Wheelchair-accessible guest room ✓

Hot spring/ Large public bath ✓

With pets × (Assisting dogs are available)

The Paradise Garden Sasebo



Basic information

- Contact information : The Paradise Garden Sasebo
- Website : <https://www.paradise-g.jp/>
- TEL : + 8 1 - 9 5 6 - 3 9 - 4 8 0 0

Address 853-12 Sakioka town Sasebo city Nagasaki

Access <By car> 20 min from Sasebo station
<By bus> 6 min walk from "Ishihama" of Saihi bus

South part



Number of guest rooms: 182 / Occupancy : 405 ppl

- Double-bed room:14 ■ Twin-bed room : 150
- Western style sweet room : 1

Preventive measures for the new coronavirus

- Infection control of staffs / the facility
 - ☒ Body temperature check
 - ☒ Wearing mask
 - ☒ Disinfection
 - ☒ Ventilation
- Infection control of guests
 - ☒ Body temperature check
 - ☒ Wearing mask
 - ☒ Disinfection
 - ☒ Keeping their contact info

Available languages

- Staff ☒ ENG ☒ CHN ☒ KOR
- Displays in the hotel ☒ ENG ☒ CHN ☒ KOR
- Displays in the room ☐ ENG ☐ CHN ☐ KOR

Barrier-free

- Shared areas ☒ Toilet ☐ Bathroom ☒ Others
- In guest rooms ☒ Room ☒ Toilet ☐ Bathroom

Wheelchair-accessible guest room ✓

Hot spring/ Large public bath ✓

With pets × (Assisting dogs are available)

Oedo Onsen Monogatari Saikaibashi Corazon Hotel



Basic information	
■ Contact information : Oedo Onsen Monogatari Saikaibashi Corazon Hotel	
■ Website	: https://corazon.ooedoonsen.jp/
■ TEL	: + 8 1 - 5 7 0 - 0 1 - 4 1 2 6
Address	2523-1 Hariohigashi town Sasebo city Nagasaki
Access	<By car> 25 min from Sasebo city <By bus> 1 min walk from “Saikaibashi Corazon Hotel” of Saihi bus

South part



Number of guest rooms: 94 / Occupancy : 274ppl	
■ Double-bed room: 4 ■ Twin-bed room : 48 ■ Western style sweet room : 2 ■ Western & Japanese style room : 17 ■ Other : 23	
Preventive measures for the new coronavirus	
■ Infection control of staffs / the facility <input checked="" type="checkbox"/> Body temperature check <input checked="" type="checkbox"/> Wearing mask <input checked="" type="checkbox"/> Disinfection <input checked="" type="checkbox"/> ventilation	
■ Infection control of guests <input checked="" type="checkbox"/> Body temperature check <input checked="" type="checkbox"/> Wearing mask <input checked="" type="checkbox"/> Disinfection <input checked="" type="checkbox"/> Keeping their contact info	
Available languages	
■ Staff <input checked="" type="checkbox"/> ENG <input checked="" type="checkbox"/> CHN <input type="checkbox"/> KOR ■ Displays in the hotel <input checked="" type="checkbox"/> ENG <input checked="" type="checkbox"/> CHN <input checked="" type="checkbox"/> KOR ■ Displays in the room <input checked="" type="checkbox"/> ENG <input checked="" type="checkbox"/> CHN <input checked="" type="checkbox"/> KOR	
Barrier-free	
■ Shared areas <input checked="" type="checkbox"/> Toilet <input checked="" type="checkbox"/> Bathroom <input checked="" type="checkbox"/> Others ■ In guest rooms <input type="checkbox"/> Room <input checked="" type="checkbox"/> Toilet <input type="checkbox"/> Bathroom	
Wheelchair-accessible guest room	✓
Hot spring/ Large public bath	✓
With pets	×

First INN Haiki



Basic information	
■ Contact information : First INN Haiki	
■ Website	: http://www.firstinn.co.jp/h-index.html
■ TEL	: + 8 1 - 9 5 6 - 3 9 - 2 1 1 1
Address	1-1-2 Haiki Sasebo city Nagasaki
Access	<By car> 15 min from Sasebo station <By bus> "Haiki ekimae" of Saihi bus

South part



Number of guest rooms: 51 / Occupancy : 80ppl	
■ Single-bed room : 28 ■ Double-bed room: 5 ■ Twin-bed room : 15 ■ Japanese style room : 1 ■ Other : 1	
Preventive measures for the new coronavirus	
■ Infection control of staffs / the facility <input checked="" type="checkbox"/> Body temperature check <input checked="" type="checkbox"/> Wearing mask <input checked="" type="checkbox"/> Disinfection <input checked="" type="checkbox"/> ventilation	
■ Infection control of guests <input checked="" type="checkbox"/> Body temperature check <input checked="" type="checkbox"/> Wearing mask <input checked="" type="checkbox"/> Disinfection <input checked="" type="checkbox"/> Keeping their contact info	
Available languages	
■ Staff <input type="checkbox"/> ENG <input type="checkbox"/> CHN <input type="checkbox"/> KOR ■ Displays in the hotel <input type="checkbox"/> ENG <input type="checkbox"/> CHN <input type="checkbox"/> KOR ■ Displays in the room <input checked="" type="checkbox"/> ENG <input type="checkbox"/> CHN <input type="checkbox"/> KOR	
Barrier-free	
■ Shared areas <input type="checkbox"/> Toilet <input type="checkbox"/> Bathroom <input checked="" type="checkbox"/> Others ■ In guest rooms <input type="checkbox"/> Room <input type="checkbox"/> Toilet <input type="checkbox"/> Bathroom	
Wheelchair-accessible guest room	×
Hot spring/ Large public bath	×
With pets	×

The list of restaurants for groups

Kujukushima Kaiyu



Basic information	
■ Website	: https://www.masueimaru.jp/kaiyuu/
■ TEL	: + 8 1 - 9 5 6 - 2 8 - 0 6 5 5
Address	1058-1 Kashimae town Sasebo city Nagasaki
Access	<By car> 12 min from Sasebo station
Parking lot	Large buses are available
Day off	1 st of Jan

Kujukushima



Occupancy : 100 ppl

■ Tatami sheets ■ Table sheets

Preventive measures for the new coronavirus

☒Body temperature check ☒Wearing mask ☒Disinfection ☒ventilation
☒ Installation of partitions or securing of table spacing

■ Infection control of guests
☒Body temperature check ☒Wearing mask ☒Disinfection

Available languages

■ Staff ☒ENG ☐CHN ☐KOR
■ Menu ☐ENG ☐CHN ☐KOR

Example menus for groups

■ Lemon steak set menu 1,980 JPY
■ Sashimi set menu 1,870 JPY
■ Seafood bowl 1,870 JPY
■ Nagasaki Chanpon noodle 968 JPY
■ Saraudon noodle



Kujukushima Seaside Terrace Hotel & Spa Hanamizuki “Kikyo-ya”



Kujukushima



Occupancy : 100 ppl

■ Tatami sheets ■ Table sheets

Preventive measures for the new coronavirus

- Infection control of staffs / the facility
 - ☒ Body temperature check ☒ Wearing mask ☒ Disinfection ☒ ventilation
 - ☒ Installation of partitions or securing of table spacing
- Infection control of guests
 - ☒ Body temperature check ☒ Wearing mask ☒ Disinfection

Available languages

- Staff ☐ ENG ☐ CHN ☐ KOR
- Menu ☐ ENG ☐ CHN ☐ KOR

Example menus for groups

- Lemon steak set menu 2,200 JPY
- Special seafood bowl 2,200 JPY
- Chazuke (tea / bouillon on rice) with red sea bream 1,230 JPY
- Squid set menu 1,630 JPY
- Miso soup with fan lobster 720 JPY

※ Menu is flexibly arrangeable, please ask the restaurant.



Basic information	
■ Website	: https://www.saspa99.jp/
■ TEL	: + 8 1 - 9 5 6 - 2 8 - 2 1 1 1
Address	1129 Kashimae town Sasebo city Nagasaki
Access	<By car> 12 min from Sasebo station
Parking lot	6 large buses are available to park
Day off	-

Marumo Suisan



Kujukushima

Occupancy : 100 ppl

■ Table sheets

Preventive measures for the new coronavirus

■ Infection control of staffs / the facility

☐ Body temperature check ☒ Wearing mask ☒ Disinfection ☒ ventilation ☒

Installation of partitions or securing of table spacing

■ Infection control of guests

☐ Body temperature check ☒ Wearing mask ☒ Disinfection

Available languages

■ Staff ☒ ENG ☒ CHN ☐ KOR

■ Menu ☒ ENG ☒ CHN ☐ KOR

Example menus for groups

■ Kujukushima Oyster 1kg 900 JPY

■ Kujukushima set (Oyster 1 kg, Oyster chowder, Sasa rice) 1,700 JPY

■ Kujukushima set A

(Oyster 2kg • turban shell 4 pcs • Dried squid) 2,900 JPY

■ Kujukushima set B

(Oyster 2kg • turban shell 4 pcs • Oyster dumpling 3 pcs)

Basic information

■ Website : <https://marumo99.jp/>
 ■ TEL : + 8 1 - 9 5 6 - 2 8 - 0 6 0 2

Address 944 Funakoshi town Sasebo city Nagasaki

Access <By car> 16 min from Sasebo station

Parking lot 3 large buses are available to park

Day off 13-15th of August, 1st of Jan



Shiosai no yado “Hanaichi”



Basic information

- Website : <https://sasebo871.com/>
- TEL : + 8 1 - 9 5 6 - 2 8 - 5 5 3 3

Address 190 Funakoshi town Sasebo city Nagasaki

Access <By car> 15 min from Sasebo station

Parking lot 6 large buses are available to park

Day off -

Kujukushima

◆◆◆◆◆
team **NAGASAKI**
SAFETY

Occupancy : 120 ppl

- Tatami sheets
- Table sheets

Preventive measures for the new coronavirus

- Infection control of staffs / the facility
- ☑ Body temperature check
- ☑ Wearing mask
- ☑ Disinfection
- ☑ ventilation
- ☑ Installation of partitions or securing of table spacing

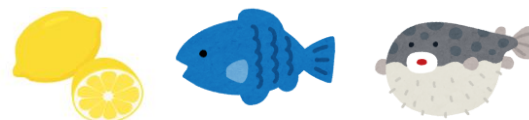
- Infection control of guests
- ☑ Body temperature check
- ☑ Wearing mask
- ☑ Disinfection

Available languages

- Staff
- ☑ ENG
- ☐ CHN
- ☐ KOR
- Menu
- ☑ ENG
- ☐ CHN
- ☐ KOR

Example menus for groups

- Lemon steak
- Beef stew of Navy's recipe
- Shabu-shabu of red sea bream



Sasebo burger original shop



Basic information	
■ Website	: https://sasebo871.com/
■ TEL	: + 8 1 - 9 5 6 - 2 8 - 5 5 3 3
Address	190 Funakoshi town Sasebo city Nagasaki
Access	<By car> 15 min from Sasebo station
Parking lot	6 large buses are available to park
Day off	-

Kujukushima



Occupancy : 80 ppl

- Terrace sheets ■ Table sheets

Preventive measures for the new coronavirus

- Infection control of staffs / the facility
☒Body temperature check ☒Wearing mask ☒Disinfection ☒ventilation
☒ Installation of partitions or securing of table spacing

- Infection control of guests
☒Body temperature check ☒Wearing mask ☒Disinfection

Available languages

- Staff ☒ENG ☐CHN ☐KOR
■ Menu ☒ENG ☐CHN ☐KOR

Example menus for groups

- Special burger 750 JPY
■ Bacon egg burger 700 JPY
■ ABC burger 900 JPY
■ French fries 200 JPY
■ Chicken nugget 300 JPY



Sasebo Sunset Tokotowa



Basic information

- Website : <https://www.pearlsea.jp/shop/tokotowa/shop.cgi>
- TEL : + 8 1 - 9 5 6 - 2 8 - 3 3 5 3

Address Kashimae town Sasebo city Nagasaki

Access <By car> 12 min from Sasebo station

Parking lot Large buses are available to park

Day off Irregular

Kujukushima



Occupancy : 96 ppl

■ Table sheets

Preventive measures for the new coronavirus

■ Infection control of staffs / the facility

- ☒ Body temperature check
- ☒ Wearing mask
- ☒ Disinfection
- ☒ ventilation
- ☒ Installation of partitions or securing of table spacing

■ Infection control of guests

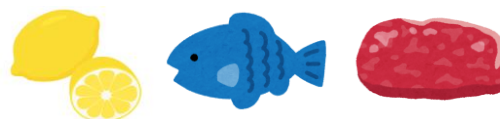
- ☒ Body temperature check
- ☒ Wearing mask
- ☒ Disinfection

Available languages

- Staff ☐ ENG ☐ CHN ☐ KOR
- Menu ☐ ENG ☐ CHN ☐ KOR

Example menus for groups

- Steamed Nagasaki wagyu beef course
- Nagasaki wagyu beef lemon steak



Bell beach



Kujukushima



Occupancy : 74 ppl

■ Terrace sheets ■ Table sheets

Preventive measures for the new coronavirus

■ Infection control of staffs / the facility

☒ Body temperature check ☒ Wearing mask ☒ Disinfection ☒ ventilation
☒ Installation of partitions or securing of table spacing

■ Infection control of guests

☒ Body temperature check ☒ Wearing mask ☒ Disinfection

Available languages

■ Staff ☐ ENG ☐ CHN ☐ KOR
■ Menu ☐ ENG ☐ CHN ☐ KOR

Example menus for groups

■ Special burger 680 JPY
■ French fries & drink set 350 JPY
■ Chicken & drink set 350 JPY



Basic information

■ Website : <https://www.masueimaru.jp/bellbeach/index.php/view/2>
■ TEL : + 8 1 - 9 5 6 - 2 8 - 7 7 1 8

Address 942-3 Kashimae town Sasebo city Nagasaki

Access <By car> 15 min from Sasebo station

Parking lot Large buses are available to park

Day off Every Thursdays

Fujinaga honten



Basic information

- Website : <https://www.fujinaga.com/shop-honten/>
- TEL : + 8 1 - 1 2 0 - 4 9 - - 2 4 8 7

Address	50-14 Ono own Sasebo city Nagasaki
Access	<By car> 20 min from Sasebo station
Parking lot	Large buses are available to park
Day off	Every Tuesdays

North part



Occupancy : 60 ppl

- Tatami sheets ■ Table sheets

Preventive measures for the new coronavirus

- ☒ Body temperature check ☒ Wearing mask ☒ Disinfection ☒ ventilation
- ☒ Installation of partitions or securing of table spacing

- Infection control of guests
- ☒ Body temperature check ☒ Wearing mask ☒ Disinfection

Available languages

- Staff ☐ ENG ☐ CHN ☐ KOR
- Menu ☐ ENG ☐ CHN ☐ KOR

Example menus for groups

- Kujukushima's seafood chirashi sushi lunch set 1,700 JPY
- Delicious meal set 1,700 JPY~



Porto Main shop



Basic information	
■ Website	: https://www.hakuju-ji.com/
■ TEL	: + 8 1 - 9 5 6 - 2 2 - 2 8 3 1
Address	4-19 Motoshima town Sasebo city Nagasaki
Access	<By car> 6 min from Sasebo station
Parking lot	-
Day off	Irregular

Downtown



Occupancy : 40 ppl

■ Table sheets

Preventive measures for the new coronavirus

- ☒ Body temperature check ☒ Wearing mask ☒ Disinfection ☒ ventilation
- ☒ Installation of partitions or securing of table spacing

■ Infection control of guests

- ☒ Body temperature check ☒ Wearing mask ☒ Disinfection

Available languages

- Staff ☐ ENG ☐ CHN ☐ KOR
- Menu ☐ ENG ☐ CHN ☐ KOR

Example menus for groups

- Lemon steak 1,800 JPY
- Beef stew of Navy's recipe 1,180 JPY



Nagasaki wagyu beef Aizan tei



Downtown



Occupancy : 30 ppl

■ Tatami sheets ■ Table sheets

Preventive measures for the new coronavirus

☒ Body temperature check ☒ Wearing mask ☒ Disinfection ☒ ventilation
☒ Installation of partitions or securing of table spacing

Infection control of guests

☒ Body temperature check ☒ Wearing mask ☒ Disinfection

Available languages

■ Staff ☒ ENG ☐ CHN ☐ KOR
 ■ Menu ☒ ENG ☐ CHN ☐ KOR

Example menus for groups

■ Buffet course including Nagasaki wagyu beef, Kirishima kurobuta pork etc.
 2,980 JPY ~

Basic information

■ TEL : + 8 1 - 9 5 6 - 2 5 - 2 7 6 4

Address 7-25 Motoshima town Sasebo city Nagasaki

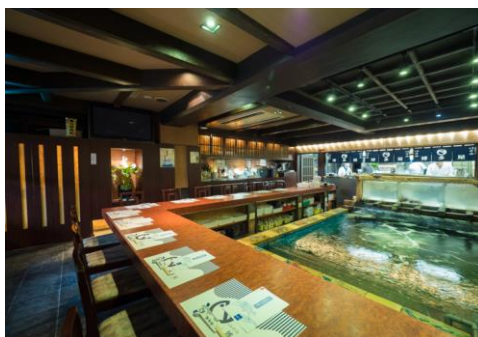
Access <By car> 5 min from Sasebo station

Parking lot -

Day off -



Sasebo Green Hotel Ikesu Hakataya



Basic information

- Website : <http://www.hotelsasebo.com/restaurant.html>
- TEL : + 8 1 - 9 5 6 - 2 5 - 6 2 6 1

Address 4-1 Miura town Sasebo city Nagasaki

Access <By car> 3 min from Sasebo city

Parking lot -

Day off -

Downtown



Occupancy : 30 ppl

- Tatami sheets
- Table sheets

Preventive measures for the new coronavirus

- ☒ Body temperature check
- ☒ Wearing mask
- ☒ Disinfection
- ☒ ventilation
- ☒ Installation of partitions or securing of table spacing

Infection control of guests

- ☒ Body temperature check
- ☒ Wearing mask
- ☒ Disinfection

Available languages

- Staff ☐ ENG ☐ CHN ☐ KOR
- Menu ☐ ENG ☐ CHN ☐ KOR

Example menus for groups

- Sasebo seafood set 3,300 JPY
- Fresh horse mackerel set 2,750 JPY



Leo Plaza Hotel Takino Chaya” Koitaro”



Downtown

Occupancy : 200 ppl

■ Tatami sheets ■ Table sheets

Preventive measures for the new coronavirus

☒ Body temperature check ☒ Wearing mask ☒ Disinfection ☒ ventilation
☒ Installation of partitions or securing of table spacing

■ Infection control of guests

☒ Body temperature check ☒ Wearing mask ☒ Disinfection

Available languages

■ Staff ☒ ENG ☐ CHN ☐ KOR
 ■ Menu ☒ ENG ☐ CHN ☐ KOR

Example menus for groups

■ Various set menu 1,980 JPY



Basic information

■ Website : <http://www.leoplazahotelsasebo.com/restaurant.html>
 ■ TEL : + 8 1 - 9 5 6 - 2 2 - 4 1 4 1

Address 4-28 Miura town Sasebo city Nagasaki

Access <By car> 3 min from Sasebo station

Parking lot 3 large buses are available to park

Day off 31st of Dec & 1st of Jan



Central Hotel Sasebo Restaurant “ Shiki ”



Basic information

- Website : <https://www.sasebo.co.jp/restaurant/>
- TEL : + 8 1 - 9 5 6 - 2 5 - 0 0 0 1

Address 3-2 Kamikyo town Sasebo city Nagasaki

Access <By car> 6 min from Sasebo station

Parking lot -

Day off -

Downtown



Occupancy : 100 ppl

- Tatami sheets
- Table sheets

Preventive measures for the new coronavirus

- ☒ Body temperature check
- ☒ Wearing mask
- ☒ Disinfection
- ☒ ventilation
- ☒ Installation of partitions or securing of table spacing

Infection control of guests

- ☒ Body temperature check
- ☒ Wearing mask
- ☒ Disinfection

Available languages

- Staff ☐ ENG ☐ CHN ☐ KOR
- Menu ☐ ENG ☐ CHN ☐ KOR

Example menus for groups

- Japanese / Western style set menu 3,500 JPY ~
- ※ You can choose the option as buffet style



Jidaiya



Basic information

- Website : <http://www.jidaiya.ne.jp/>
- TEL : + 8 1 - 9 5 6 - 3 0 - 7 0 4 0

Address 172-1 Yoshifuku town Sasebo city Nagasaki

Access <By car> 17 min from Sasebo station

Parking lot 2 large buses are available to park

Day off Every Mondays

South part



Occupancy : 60 ppl

■ Table sheets

Preventive measures for the new coronavirus

- ☒ Body temperature check ☒ Wearing mask ☒ Disinfection ☒ ventilation
- ☒ Installation of partitions or securing of table spacing

■ Infection control of guests

- ☒ Body temperature check ☒ Wearing mask ☒ Disinfection

Available languages

- Staff ☐ ENG ☐ CHN ☐ KOR
- Menu ☐ ENG ☐ CHN ☐ KOR

Example menus for groups

- Lemon steak set 1,100 JPY
- Special lemon steak set 1,800 JPY
- Stew set 2,000 JPY



Ichigyo Ichie



Basic information

- Website : <http://www.saikaibashi-toto.com/ichigyoichie/dinner.html>
- TEL : + 8 1 - 9 5 6 - 2 0 - 2 5 2 5

Address

2371-1 Hariohigashi town Sasebo city Nagasaki

Access

<By car> 25min Sasebo station

Parking lot

3 large buses are available to park

Day off

Irregular

South part



Occupancy : 80 ppl

- Tatami sheets
- Table sheets

Preventive measures for the new coronavirus

- ☒ Body temperature check
- ☒ Wearing mask
- ☒ Disinfection
- ☒ ventilation
- ☒ Installation of partitions or securing of table spacing

Infection control of guests

- ☒ Body temperature check
- ☒ Wearing mask
- ☒ Disinfection

Available languages

- Staff ☐ ENG ☐ CHN ☐ KOR
- Menu ☐ ENG ☐ CHN ☐ KOR

Example menus for groups

- Fresh squid set 3,300 JPY
- Nagasaki wagyu beef steak set 4,500 JPY
- Signature menu set 2,300 JPY
- Nagasaki wagyu beef Sukiyaki set 2,500 JPY



Sasebo Convention & Visitors Association

21-1 Miura-town, Sasebo-city, Nagasaki, Japan

Mail : sasebo-sales@sasebo-sight.com

(Available in ENG, CHN, KOR)

