

For further information:**Hokkaido Tourism Organization**

TEL +81-(0)11-231-0941
<http://en.visit-hokkaido.jp>

**Office of Prefectural Tourism Promotion,
 Department of Economic Affairs,
 Hokkaido Government**

N3 W6, Chuo-ku, Sapporo, Hokkaido
 TEL +81-(0)11-204-5305

Hokkaido-Sapporo Tourist Information Center

Hokkaido-Sapporo "Food and Tourism" Information Center
 North Exit, West Concourse, JR Sapporo Station
 N6 W4, Kita-ku, Sapporo, Hokkaido
 TEL +81-(0)11-213-5088
 FAX +81-(0)11-213-5089

**Sapporo International Communication
 Plaza Foundation**

3F, Sapporo MN Bldg., N1 W3, Chuo-ku, Sapporo, Hokkaido
 TEL +81-(0)11-211-3670
<http://plaza-sapporo.or.jp>

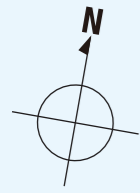


"visit HOKKAIDO" is an informative web site on sightseeing in Hokkaido.
<http://en.visit-hokkaido.jp>

Get international travel medical insurance to cover
 your medical expenses.
 *If you do not have insurance, you can get it after arriving in Japan.



Travel Around
Hokkaido



Hokkaido's major cities and tourist attractions can be easily reached by air, train (JR), car and ferry.

Index

Activities

White Season
Green Season



P03-04

Cuisine & Souvenirs



P05-07

Central Area

Area around Chitose
Sapporo
Otaru, Shakotan, Niseko
Toya, Noboribetsu, Shiraoi
Hidaka

P08-13

Southern Area

Hakodate
Esashi
Matsumae

P14-17

Northern Area

Asahikawa
Biei
Furano
TOMAMU
Area around Wakkanai

P18-21

Eastern Area

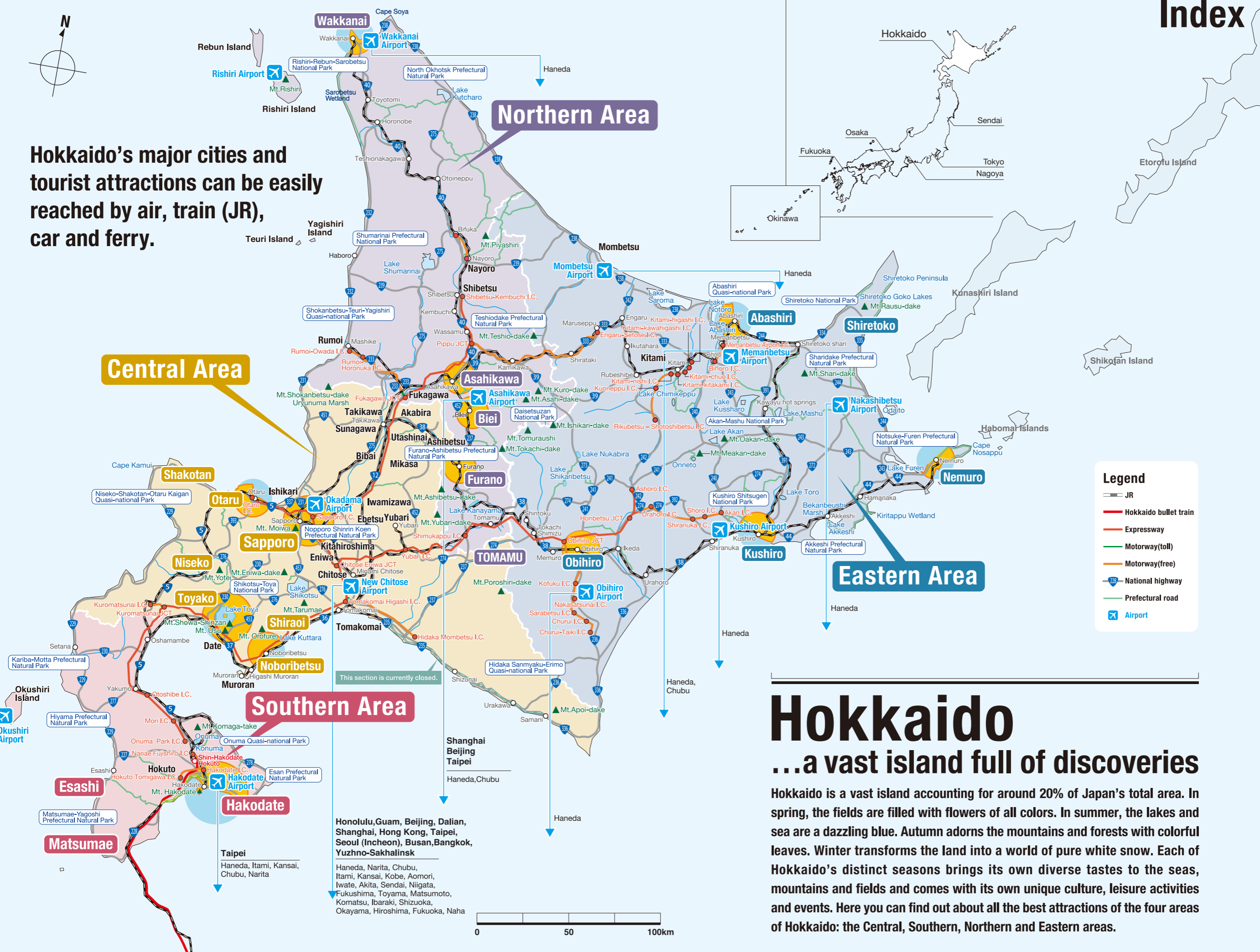
Obihiro
Kushiro
Akan
Shiretoko
Nemuro
Abashiri

P22-25

General Information

Useful Expressions P26
Model Courses P27-28
Hokkaido Calendar P29-30
Access P31-34

P26-34



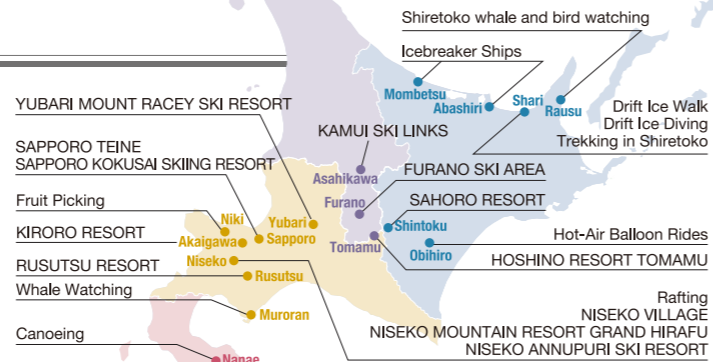
Hokkaido

...a vast island full of discoveries

Hokkaido is a vast island accounting for around 20% of Japan's total area. In spring, the fields are filled with flowers of all colors. In summer, the lakes and sea are a dazzling blue. Autumn adorns the mountains and forests with colorful leaves. Winter transforms the land into a world of pure white snow. Each of Hokkaido's distinct seasons brings its own diverse tastes to the seas, mountains and fields and comes with its own unique culture, leisure activities and events. Here you can find out about all the best attractions of the four areas of Hokkaido: the Central, Southern, Northern and Eastern areas.

Activities

Leap into the magnificent natural beauty of Hokkaido and enjoy a unique range of activities. No matter what the season, the mountains, rivers and land are packed with activities for you to enjoy. Try something new to make your trip really memorable!



SAPPORO KOKUSAI SKIING RESORT (Sapporo)
With the main course of 100 m wide and the course with lengths up to 3.6 km, there's plenty for you to enjoy, whether you're a beginner, an expert or bringing the whole family.
■Tel.011-598-4511 (Sapporo Kokusai Skiing Resort)
<http://www.sapporo-kokusai.jp>



RUSUTSU RESORT (Rusutsu)
Hokkaido's No.1 ski ground! Located on three mountains blanketed in the world-famous powder snow, there are 37 courses to choose from with everything from beginner to expert courses.
■Tel.0136-46-3111 (Rusutsu Resort)
<http://www.rusutsu.co.jp>



NISEKO MOUNTAIN RESORT GRAND HIRAFU (Kutchan)
In addition to the famous powder snow, you'll find a vast area of well-groomed snow. There are a huge variety of courses for everybody from families to experts.
■Tel.0136-22-0109 (Niseko Mountain Resort Grand HIRAFU)
<http://www.grand-hirafu.jp>



HOSHINO RESORT TOMAMU (Shimukappu)
Popular for its vast ski slopes and excellent powder snow created by the freezing temperatures. There's plenty for families to do in the well-equipped family area!
■Tel.0167-58-1122 (Hoshino Resort Tomamu)
<http://www.snowtomamu.jp>



FURANO SKI AREA (Furano)
One of Hokkaido's top ski resorts, this famous ski ground has hosted 10 FIS World Cups.
■Tel.0167-22-1111 (Furano Ski Area)
<http://ski.princehotels.co.jp/furano>



KIRORO RESORT (Akaigawa)
Located within an hour of Otaru and Sapporo, this resort has some of the best quality snow in Hokkaido. There are even ski in/ski out hotels.
■Tel.0135-34-7111 (Kiroro Resort)
<http://www.kiroro.co.jp>

SAPPORO TEINE (Sapporo)
■Tel.011-682-6000
<http://www.sapporo-teine.com>

YUBARI RESORT MOUNT RACEY (Yubari)
■Tel.0123-52-5151
<http://www.yubari-resort.com>

NISEKO VILLAGE (Niseko)
■Tel.0136-44-2211
<http://www.niseko-village.com>

KAMUI SKI LINKS (Asahikawa)
■Tel.0166-72-2311
<http://www.kamui-skilinks.com>

NISEKO ANNUPURI SKI RESORT (Niseko)
■Tel.0136-58-2080
<http://annupuri.info>

SAHORO RESORT (Shintoku)
■Tel.0156-64-4121
<http://www.sahoro.co.jp>



Snowshoeing (Various areas of Hokkaido)
Strap on a pair of snowshoes and you'll be able to walk easily without sinking into the deep snow. An unmissable experience!



Snowmobiles (Various areas of Hokkaido)
These small vehicles move easily through the deep snow of the mountains and up and down the ski slopes. Hop on a snowmobile and explore a magical white world.

White Season

Icebreaker Ships (Abashiri, Mombetsu)

In winter, the Sea of Okhotsk is covered by giant, floating masses of ice called "drift ice". Icebreaker ships smash their way safely through the ice. You can ride the "Aurora" from Abashiri or the "Garinko-go II" from Mombetsu.

"Aurora" from Abashiri
●Jan 20-Apr 2 ●Admission: ¥3,300
■Tel.0152-43-6000 (Doutou Kanko Kaihatsu)
<http://www.ms-aurora.com>



"Garinko-go II" from Mombetsu
●Jan 10-Mar 31
●Admission: ¥3,000
■Tel.0158-24-8000 (Okhotsk Garinko & Tower)
<http://www.o-tower.co.jp>



Drift Ice Walk (Shari)
Put on a dry suit and walk on the drift ice like the northern peoples who crossed the drift ice in ancient times.
●Feb-Mar (Must be 6 years or older and 130cm (4'3") or taller)
■Tel.0152-22-2125 (Shiretoko Shari Tourist Association)
<http://www.shiretoko.asia>

Drift Ice Diving (Shari and other areas)

Discover a mysterious world under the drift ice. Dry suits and regulators available for rental.
●Feb-Mar (participants must have a diving license)
■Tel.0152-24-2888 (Iruka Hotel)
Please e-mail us for further details.
info@iruka-hotel.com
<http://www.iruka-hotel.com/>



Trekking in Shiretoko (Shari)
Take a walk through the World Heritage Site of Shiretoko. With easy courses to scenic spots such as Purepe Falls and courses to popular attractions such as the Shiretoko Five Lakes and Lake Rausu, there's something to suit all fitness levels.
■Tel.0152-22-2125 (Shiretoko Shari Tourist Association)
<http://www.shiretoko.asia/>



Shiretoko Whale and Bird Watching (Rausu)
The seas of Shiretoko's World Heritage Site are home to some spectacular animals. See pods of orca in spring, sperm whales over 15 m long in summer and Steller's sea eagles during drift ice season in winter!
■Tel.0153-87-3360 (Shiretoko Rausu-cho Tourist Association)
<http://www.rausu-shiretoko.com/>
(English URL: <http://www.rausu-shiretoko.com/en/index.html>)



Fruit Picking (Niki and other areas)
Niki in central Hokkaido is famed for its fruits. From June to October, the town bustles with people picking and enjoying its abundant strawberries, cherries, grapes, prunes and more.
■Tel.0135-32-2711 (Niki Tourism Association)
<http://www.niki-kanko.jp/>



Whale Watching (Muran)
See minke whales swimming around your boat, approximately up to 400-strong pods of Pacific white-sided dolphins, and orca, the largest species of dolphin. 10 species of dolphins, whales and fur seals can be seen in the seas of Muroran between spring and autumn.
●May-Aug
■Tel.0143-23-0102 (Muran Tourist Association)
<http://www.muro-kanko.com>
■Tel.0143-27-1822 (KK ELM)
<http://www.kk-elm.jp>
■Tel.090-1644-6793 (STARMARINE)
<http://www.muro-nc.com/watching/>

Green Season



Hot-Air Balloon Rides
Take a ride in a hot air balloon and take in the 360-degree panorama from high in the air. In Tokachi, for example, you can see the horizon, winding rivers and mountain ranges from 30 m up.
●Apr 30-Sep 30 ●Admission: ¥2,000
■Tel.0155-32-6116 (Tokachi Nature Center)
<http://www.nature-tokachi.co.jp>

Horseback Riding (Various areas of Hokkaido)
Hokkaido is Japan's biggest horse breeding area. There are a large number of horse riding facilities, with some even providing lessons for beginners. See the nature of Hokkaido from the saddle.



Canoeing (Nanae)
The calm waters of Onuma are the perfect place for canoeing. You can even enjoy coffee brewed by the guide while you're out on the water.
■Tel.0138-67-3020 (Nanae Onuma International Tourism and Convention Association)
<http://www.onuma-guide.com>

Rafting (Niseko)
Take a ride down crystal clear waters in a rubber raft. Enjoy gently drifting through beautiful scenery and the white-knuckle excitement of whitewater rafting, all in the same trip! A non-stop thrill!
■Tel.0136-43-2051
(Michinoeki Niseko View Plaza Tourist Information Center)
<http://www.niseko-ta.jp/>



Golf (Various areas of Hokkaido)
Hokkaido is a golfer's paradise. The breathtaking nature of Hokkaido is the perfect background for a satisfying round.

Cuisine

One of the greatest joys of travelling to Hokkaido is the delicious cuisine you'll discover. Here is a guide to Hokkaido's must-try food, from home-style dishes to seasonal specialties and markets where you can have your pick of a mouthwatering array of fresh foods.



Sapporo Ramen Republic (Sapporo)

The 10th floor of Esta by Sapporo Station is packed with famous restaurants where you can enjoy a huge variety of ramen from Sapporo and throughout Hokkaido.

- 11:00am-10:00pm
- Open throughout the year
- Tel.011-213-2010 (Sapporo Ramen Republic)

Each region specializes in a different kind of ramen:

miso-flavored ramen in Sapporo, salt-flavored ramen in Hakodate and soy sauce-flavored ramen in Asahikawa and Kushiro. Unique flavors such as curry and shrimp ramen are also popular. Many of the restaurants would change the richness of the broth, amount of lard and how the noodles are boiled exactly how you want them.

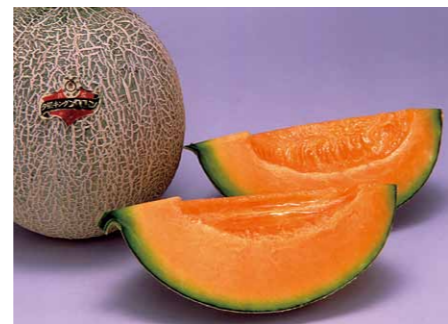
Sushi (Otaru and other areas)

If Sapporo is the place to go for ramen, Otaru is the place to go for sushi. You'll find over 120 sushi restaurants throughout the city, each with delicious seasonal ingredients and the finest service.



Ishikari Hotpot (Ishikari and other areas)

One of Hokkaido's most famous dishes, this local comfort food originated in the Ishikari area. The dish is made from salmon and vegetables such as cabbage in a white miso broth, garnished with Japanese pepper for a truly authentic touch.

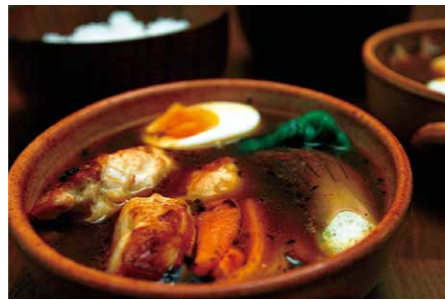


Melon (Yubari and other areas)

Red- and green-fleshed melons are grown in Yubari and many other areas throughout Hokkaido. The best time is late June to August.

Soup Curry (Sapporo and other areas)

Unlike the better-known roux curry, this curry is served as a light soup. Originating in Sapporo, the popularity of soup curry is spreading throughout Japan.



Hakodate Morning Market (Hakodate)

You'll find everything from seafood to sweets and delicacies at this gigantic market. There are also a large number of restaurants serving specialty seafood rice bowls or squid cuisine.

- 5:00am-afternoon (some stalls are open until 3:00pm. Opens 6:00am Jan-Apr)
- Open throughout the year
- Tel.0120-858-313 (Hakodate Morning Market)



Squid Somen (Hakodate)

If you're going to Hakodate, make sure to try one of its squid dishes. A must in summer is squid somen, made from fresh, finely chopped squid just like clear somen noodles.

Free Market (Hakodate)

This is where professional chefs get their ingredients! This market is highly renowned for its abundant seafood and top quality. You'll also find plenty of Hokkaido specialties!

- 8:00am-5:30pm
- Closed Sundays
- Tel.0138-27-2200 (Free Market)



Pacific Herring Soba (Esashi and other areas)

Japanese soba noodles topped with bitter-sweet boiled pacific herring. This dish is famous in Kyoto but originated in Esashi, Southern Hokkaido.



Sea Urchin (Rishiri/Rebun Islands, Shakotan and other areas)

The ultra-fresh sea urchin of Hokkaido makes for exceptional sushi, sashimi and donburi (rice bowl). The most famous areas are Rishiri and Rebun Islands in Northern Hokkaido and Shakotan in Central Hokkaido.



Kushiro Washo Market (Kushiro)

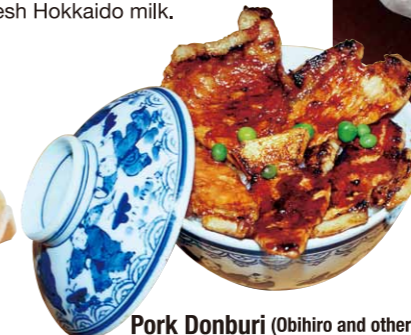
This market has created a dish called Katte-don (Whatever-you-like Rice Bowl) that is becoming a smash hit throughout Japan. Buy the seafood of your choice at one of the stalls and have it prepared on rice.

- 8:00am-6:00pm
- Closed Sundays
- Tel.0154-22-3226 (Kushiro Washo Market)



Soft-Serve Ice Cream

Enjoy rich, creamy ice cream and soft-serve ice cream made from fresh Hokkaido milk.



Pork Donburi (Obihiro and other areas)

High quality pork fried to aromatic perfection and placed on rice with bitter-sweet sauce. You'll find a large number of specialist restaurants in its birthplace, Obihiro.

Wine (Furano and other areas)

Hokkaido's most historic wine regions include Ikeda, Furano, Otaru, Hakodate and Yoichi. Toya and Mikasa have also recently emerged as prolific wine producers.



Crab

Enjoy rich Hanasaki crab, tuck into the ample meat of red king crab, and try horsehair crab in a variety of dishes, including miso-like paste found in a crab! What could be more luxurious than freshly boiled crab?



Oyster

The colder it gets, the better Hokkaido oysters taste. The most popular oysters are from Saroma and Akkeshi in Eastern Hokkaido. Enjoy them fried, in hot pots or vinegared.

Hugely popular!
Try these original dishes made from local ingredients!



Furano Omelet Curry

Curry meets omelet rice!



Tokachi Shimizu Gyutama Steak-don

Rice topped with beef steak seasoned with miso.



Okhotsk Abashiri Zangi-don

Deep-fried Okhotsk salmon goes perfectly with rice!



Akan Yakitori-don

Enjoy sika venison in three ways in this hearty dish. A unique dish!?



Habero Fried Shrimp and Octopus Dumpling

A healthy dish made from Alaskan Pink Shrimp and North Pacific Giant Octopus.



Tokachi Memuro Corn Fried Rice

Made with sweet corn fried lightly in butter.



Betsukai Jumbo Scallop Burger

A giant scallop spring roll sandwiched between two buns.



Shin-Biei Curry Udon <Grilled Noodles>

Curry udon noodles grilled with golden cheese.



Okhotsk Kitami Salt Yakisoba

Infused with a delicious scallop flavor!



Nemuro Rolled Pacific Saury Sushi

Rice and Pacific saury rolled in kombu kelp.

Souvenirs available at New Chitose Airport

Hokkaido is known as the “Kingdom of Sweets”, and each region produces its own unique variety of flavors. Delicious flavors made with superb, fresh local produce. What better gift to bring home from your Hokkaido adventure?



Shiroi Koibito (Ishiya Co., Ltd)

Our original recipe white chocolate sandwiched between freshly baked crispy langue de chat biscuit. Shiroi Koibito has remained extremely popular for over 30 years, and is one of the finest examples of Hokkaido confectionery.



Sanpouroku (Ryugetsu)

A luxurious buttery baumkuchen cake made with a mix of milk and white chocolate in the image of Hokkaido's most famous tree, the “Japanese White Birch”. This long-selling confectionery has been enjoyed for over 40 years, and is made with only the finest Hokkaido ingredients.

Hokkaido Kaitaku Okaki (Kitakaro)

“Okaki” is the name of a traditional Japanese baked cracker. These delicious aromatic crackers are made with high quality glutinous rice, Hokkaido salt, and other Hokkaido specialties including Erimo kelp, Okhotsk Esashi scallop, Shibetsu autumn salmon, Matsumae squid and Mashike deep-water shrimps.



Sapporo Agricultural College Milk Cookies (Kinotoya)

Kinotoya's official Hokkaido University milk cookies have received the Grand Gold Quality Award three years running since 2008 from the Monde Selection. The rich flavor created using lots of delicious Hokkaido milk and the light, melt-in-the-mouth texture make these cookies extra special.

Corn Chocolate (Hori)

Golden sweetcorn, ripened in the fresh Hokkaido summer and coated in luxurious white chocolate. Brimming with the goodness of Hokkaido, this crispy, delicately sweetened confectionery is a long-time family favorite.



Hokkaido Tourism PR Character “Kyun-chan”

Why not take home cute Kyun-chan goods to remind you of your own unique Hokkaido experience?

Kyun-chan shows the many charms of Hokkaido tourism. Many souvenirs and goods have been designed with Kyun-chan so you can choose the one that best reminds you of your favorite place or moment in Hokkaido. Kyun-chan is also the perfect way to show your friends the wonders of Hokkaido!

Kyun-chan goods available at:
Hokkaido Shiki-sai-kan
Sapporo Nishiten
inside JR Sapporo Station
Open: 6:30am-11:00pm
Tel.011-261-8655



*The photo is for illustrative purposes only

Don't forget Kyun-chan's friend “TV Tosan (daddy)”!

Kyun-chan's friend “TV Tosan” is the symbol of Odori Park in Sapporo and the unofficial character of Sapporo TV Tower. He has a bright red body, green belly warmer and single black antenna on his head. There are about 100 types of TV Tosan goods for sale, including the hugely popular hand-sized soft toy mobile phone strap. TV Tosan makes the perfect rare and unique Hokkaido gift!

What is Kyun-chan?

In Japanese, the word “Kyun” is used to describe the kind of “heart twinges” when we feel deeply moved. “Kyun-chan” is named with this word because we want visitors to take it home as a reminder of all of the wonderful people and places you meet on your visit. Kyun-chan is originally a pika, a small furry rabbit-like animal that only lives in Hokkaido. However, in order to conceal its timid nature, it has disguised itself as a Hokkaido sika deer and is now on a journey to find all of the hidden excitement and adventure Hokkaido has to offer.

TV Tosan goods available at:

Sapporo TV Tower Shop
(West1, Odori, Chuo-ku, Sapporo)
9:30am-9:30pm
*Times may change during event periods in Odori Park.

Central Area



Area around Chitose Sapporo Otaru, Shakotan, Niseko Toya, Noboribetsu, Shiraoui Hidaka

Hokkaido was developed in the latter half of the 19th century by the Japanese government and American engineers. Much of that history remains in this area, including Sapporo, which has been the center of Hokkaido since those days, and Otaru, where canals and gas lamps remain from bygone days. There is also an abundance of volcanoes, lakes and facilities where you can experience Ainu culture.

- ① Lake Shikotsu (Chitose)
- ② New Chitose Airport
- ③ DORAEMON WAKUWAKU SKY PARK
- ④ Chitose Outlet Mall Rera
- ⑤ Northern Horse Park (Tomakomai)
- ⑥ Ecorin Village (Eniwa)
- ⑦ JR Tower
- ⑧ Large Appliance Outlet Stores
- ⑨ Odori Park
- ⑩ Sapporo White Illumination
- ⑪ Sapporo Snow Festival
- ⑫ Sapporo Clock Tower
- ⑬ Susukino
- ⑭ The Former Hokkaido Government Office Building
- ⑮ Sapporo Tanukikoji Shopping Street
- ⑯ Hokkaido University
- ⑰ Mt. Moiwa Viewpoint
- ⑱ Sapporo Hitsujigaoka Observation Hill
- ⑲ Otaru Canal
- ⑳ Cape Kamui
- ㉑ Glasswork
- ㉒ Otaru Music Box Museum
- ㉓ Otaru
- ㉔ Okadama Airport
- ㉕ Asarigawa Hot Springs
- ㉖ Sapporo
- ㉗ Chitose
- ㉘ New Chitose Airport
- ㉙ Lake Shikotsu
- ㉚ Chitose-Shikotsuko Hyoto Festival (Ice festival)
- ㉛ Toya Caldera and Usu Volcano Global Geopark
- ㉜ Niseko Hot Springs
- ㉝ Jozankei Hot Springs
- ㉞ Showa-Shinzan International Yuki-gassen (Snowball Fight)
- ㉟ Kyogoku Fukidashi Koen
- ㊱ Mt. Yotei
- ㊲ Michinoeki Niseko View Plaza
- ㊳ Lake Toya
- ㊴ Lake Toya Hot Springs
- ㊵ Mt. Orofure
- ㊶ Noboribetsu Hot Springs
- ㊷ Oyunuma Brook Natural Footbath
- ㊸ Noboribetsu Hell Valley
- ㊹ The King of Hell “Enma”
- ㊺ Noboribetsu Date Jidaimura
- ㊻ Noboribetsu Flower Tunnel
- ㊼ Shikotsuko Hot Springs, Marukoma Hot Spring, Ito Hot Spring
- ㊽ The Ainu Museum POROTO KOTAN in Shiraoui
- ㊾ Lake Kutarra
- ㊿ Shizunai Nijikken Road
- Urakawa Yushun Village “AERU”

Shikotsuko Hot Springs (Chitose)
You'll be spoiled for choice when it comes to hot springs - Shikotsuko, Marukoma and Ito Hot Springs are all located by Lake Shikotsu. Try out each resort's unique water for the ultimate relaxation.
Tel.0123-24-8818
(Chitose Tourist Association)

Area around Chitose

New Chitose Airport is situated at the center of this area. With a large number of domestic and international flights departing and arriving from early in the morning to late at night, the airport is used by around 16 million people every year.

2 New Chitose Airport (Chitose)

New Chitose Airport connects Hokkaido with a large number of domestic and overseas airports. Commercial facilities and restaurants make the airport convenient for tourists and business travelers alike. The domestic terminal now contains a cinema, hot spring baths and even a chocolate factory, making it popular not only as a means of transportation but as an entertainment facility. ■Tel.0123-23-0111 (New Chitose Airport General Information Center)



© Fujiko-Pro, Shogakukan, TV-Asahi, Shin-ei and ADK

4 Chitose Outlet Mall Rera (Chitose)

This massive open mall has over 400 brand outlet stores selling not only fashion items but sporting, outdoor and interior goods. A free shuttle bus runs between the mall and New Chitose Airport.

● 10:00am-7:00pm (11:00am for some restaurants) ● Open throughout the year
■Tel.0123-42-3000
(Chitose Outlet Mall Rera)



6 Northern Horse Park (Tomakomai)

Around 15 minutes by car from New Chitose Airport, this vast park is fun for the whole family. Take a ride in a horse drawn carriage, try horseback riding, enjoy mini-golf which is originated in Hokkaido or take in the beautiful seasonal flowers in the park's garden.

● 9:00am-5:00pm (hours differ in winter and summer)
■Tel.0144-58-2116
(Northern Horse Park)



3 DORAEMON WAKUWAKU SKY PARK (Chitose)

An entertainment park dedicated to the hugely popular cartoon Doraemon that is a hit not only throughout Asia but all over the world. The park consists of seven zones, including a park zone full of attractions involving the secret tools from Doraemon and a shopping zone packed with Doraemon merchandise.



● 3F Smile Road, Annex Facility, New Chitose Airport Passenger Terminal Building
● Park Zone: 10:00am-6:00pm
● Park Zone Admission: Adult: ¥600, Student aged 13-18: ¥400, Child aged 3-12: ¥300, Child under 3: Free
■Tel.0123-46-3355

"Nobita's room" is reproduced at the park zone (fee applies).

5 Chitose-Shikotsuko Hyoto Festival (Ice festival) (Chitose)

The water of Lake Shikotsu and the subzero air around it combine to create natural works of art you can only see in the North. The ice waves sparkle in blue in the day and are lit up at night, creating a surreal, mysterious sight.

● Late Jan-mid Feb ● Held by Lake Shikotsu
■Tel.0123-23-8288
(Lake Shikotsu Festival Planning Committee)



7 Ecorin Village (Eniwa)

Ecorin Village is a 40-hectare (99-acre) pasture area with a variety of attractions for you to enjoy. Take in the beauty of the 30 Ginga (Galactic) Gardens or see animals such as sheep and llamas on the Farm Tour or at the Sheepdog Shows. You can even meet adorable alpacas!

● Ginga Gardens: 9:30am-5:30pm
*Opening hours differ depending on the attraction and season. (winter closed)
■Tel.0123-34-7800
(Ecorin Village)



10 Sapporo White Illumination (Sapporo)

When Sapporo is blanketed with white snow, the night sky of the city center is lit up with decorative lights, creating a magical beauty.

● Late Nov-mid Mar
● Odori Park, Ekimae Avenue, South 1 Avenue
■Tel.011-211-3341
(Sapporo White Illumination Executive Committee)



14 Susukino (Sapporo)

The heart of Sapporo's nightlife, Susukino is packed with bars, pubs and restaurants serving local cuisine. Make sure you try the delicious ramen in the "Ramen Yokocho (alley)".

■Tel.011-518-2005
(Susukino Tourist Association)



13 Sapporo Clock Tower (Sapporo)

One of Sapporo's most famous attractions, it was built in 1878 as the military drill hall of the former Sapporo Agricultural College, now Hokkaido University. National Important Cultural Property.

● 8:45am-5:10pm ● Admission: ¥200
*Closed for renovations between Jun 1 - Oct 31, 2018.
■Tel.011-231-0838 (Sapporo Clock Tower)



16 Sapporo Tanukikoji Shopping Street (Sapporo)

A huge attraction for tourists and locals alike, this crowded shopping arcade has a huge mix of shops, ranging from traditional kimono shops to duty free shops and drugstores.

■Tel.011-241-5125
(Sapporo Tanukikoji Shopping Street Promotion Association)



18 Mt. Moiwa Viewpoint (Sapporo)

Located roughly in the center of Sapporo, Mt. Moiwa offers one of the top three night views in Hokkaido. A ropeway or the Morris car (mini cable car) takes you to the summit of the mountain.

■Tel.011-561-8177
(Mt. Moiwa Ropeway)

19 Sapporo Hitsujigaoka Observation Hill (Sapporo)

This popular tourist attraction has a bronze statue of Dr. William S. Clark, a professor deeply involved with Hokkaido University. You can even enjoy "Jingisukan", a famous Hokkaido dish of grilled mutton, as you admire the idyllic scenery.

■Tel.011-851-3080 (Sapporo Hitsujigaoka Observation Hill Administration Office)



10 Odori Park (Sapporo)

A city oasis around 1.5 km long, Odori Park has around 4,700 trees including cherry trees, and is also home to sculptures by the late, world-famous sculptor Isamu Noguchi. It also has a number of beautiful fountains. ■Tel.011-211-3341 (Sapporo Tourist Association)



12 Sapporo Snow Festival (Sapporo)

This world-famous festival is the biggest winter event in the snowy north of Japan. You will see over 200 snow and ice sculptures, including giant snow sculptures over 10 m high and snow sculptures that are hand-made by locals.

● Early-mid Feb ● Odori, Community Dome Tsudome and Susukino
■Tel.011-211-3341 (Sapporo Snow Festival Executive Committee)



15 The Former Hokkaido Government Office Building (Sapporo)

This late 19th-century building is affectionately called the "redbrick" by locals. Its front garden is a city oasis, with beautiful cherry blossoms in the spring and colorful leaves in the autumn.

● 8:45am-6:00pm ● Closed Dec 29-Jan 3
■Tel.011-204-5019 (8:45am-5:30pm weekdays)
■Tel.011-204-5000 (weekends, national holidays)

17 Hokkaido University (Sapporo)

Hokkaido's only one comprehensive university, with a history of around 140 years. In the grounds you can see Important Cultural Properties, monuments, and rows of ginkgo and poplar trees.

■Tel.011-716-2111
(Hokkaido University)



Sapporo

With a population of 1.9 million, Sapporo is Hokkaido's fashion, culture and information center. It also has an abundance of nature and a wealth of historic and scenic attractions for you to enjoy.



8 JR Tower (Sapporo)

This complex is packed with things to see and do, including shopping malls, restaurants and a cinema and so on. The top (38th) floor offers a stunning 360-degree panorama. JR Tower is connected to JR Sapporo Station.

■Tel.011-209-5050 (Sapporo Station General Development)



9 Large Appliance Outlet Stores (Sapporo and the other areas)

You'll find everything from digital cameras to appliances such as rice cookers and even cosmetics and watches. The large appliance outlet stores near Sapporo Station sell everything for discount prices, including new products.

Otaru, Shakotan, Niseko

Stroll through Otaru's picturesque streets with a foreign flavor, take in the spectacular ocean scenery from Shakotan, or enjoy the world famous modern resort facilities at Niseko. Whatever your idea of the perfect holiday, there's something for you in this area.

Activities

Cuisine & Souvenirs

Central Area

Southern Area

Northern Area

Eastern Area

General Information



21 Glasswork (Otaru)
Otaru's glass working tradition began with a factory making glass fishing equipment. Its many home-style glass works make extremely popular souvenirs. Some studios will even let you try glass working yourself.
■ Tel.0134-33-2510 (Otaru Tourism Association)

22 Otaru Music Box Museum (Otaru)
This museum is packed with music boxes playing charming melodies. As well as boxes, the museum's incredible collection includes musical glassworks, ceramics, woodcrafts and even stuffed toys. Perfect for souvenirs.
● 9:00am-6:00pm (open until 7:00pm Fridays, Saturdays and public holidays in summer)
■ Tel.0134-22-1108 (Otaru Music Box Museum Main Building) J



23 Asarigawa Hot Springs (Otaru)
Located just a 15-minute drive from the Otaru city center, this resort area is full of things to enjoy, including hotels with hot springs, an auto camp ground and a ski ground.
■ Tel.0134-33-2510 (Otaru Tourism Association)



25 Kyogoku Fukidashi Koen (Kyogoku)
The rain and snow on Mt. Yotei provide a delicious supply of spring water that people come from far away to enjoy.
■ Tel.0136-42-2111 (Kyogoku) J



26 Mt. Yotei (Niseko and other areas)
Mt. Yotei is often dubbed the "Mt. Fuji of Ezo (the former name of Hokkaido)" for its beautiful shape that resembles Mt. Fuji. There are four mountaineering tracks where you can enjoy Mt. Yotei's diverse range of alpine plants and flowers. There are several springs around the mountain that you can even take water from.

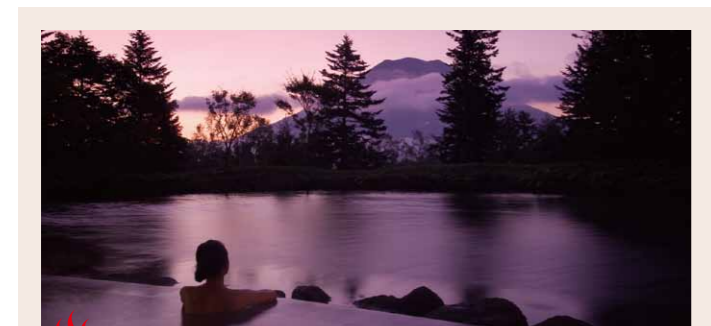


20 Otaru Canal (Otaru)
Otaru's distinctive canal and gas lamps from the early 20th century have often appeared in films and TV dramas. At souvenir shops near the canal, you can buy Japanese sake and other products, enjoy delicious cuisine such as soba at numerous restaurants and learn about the history of Otaru at a fascinating museum. You'll also find hotels and markets.
■ Tel.0134-33-2510 (Otaru Tourism Association)



23 Cape Kamui (Shakotan)
The Shakotan area has always been a prolific fishing region. Every season offers a mouthwatering bounty of fresh seafood, but the summer sea urchins are especially delicious. Cape Kamui offers a magnificent view of the clear blue Sea of Japan.
■ Tel.0135-44-3715 (Shakotan Tourist Association) J

24 Michinoeki Niseko View Plaza (Niseko)
The place to go for tourist information on Niseko. You can try specialties and soft-serve ice cream made from local milk.
● Tourist Information Center open 9:00am-6:00pm
■ Tel.0136-43-2051 (Michinoeki Niseko View Plaza Tourist Information Center) J



Niseko Hot Springs (Niseko, Rankoshi, Kutchan)
The Niseko area is packed with hot spring resorts. And you don't even need to stay in a hotel to enjoy its hot springs - many hotels and inns offer day bathing.
■ Tel.0136-43-2051 (Michinoeki Niseko View Plaza Tourist Information Center) J

Toya, Noboribetsu, Shiraoi

This area is full of unique things to see and do. Visit the internationally recognized Toya Caldera and Usu Volcano Global Geopark, bathe in the nationally renowned Noboribetsu Hot Spring Resort, and absorb some of the traditional culture of the Ainu, Hokkaido's indigenous people.

Activities

Cuisine & Souvenirs

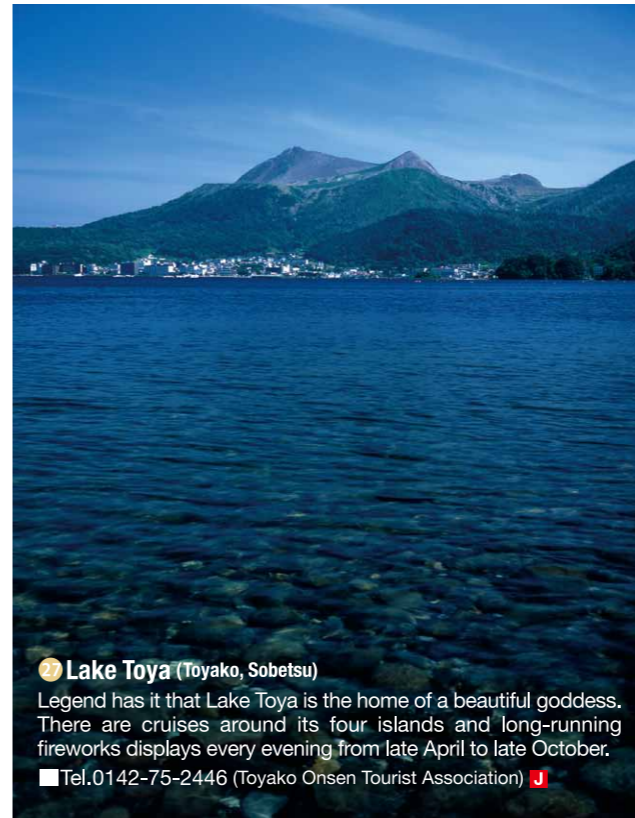
Central Area

Southern Area

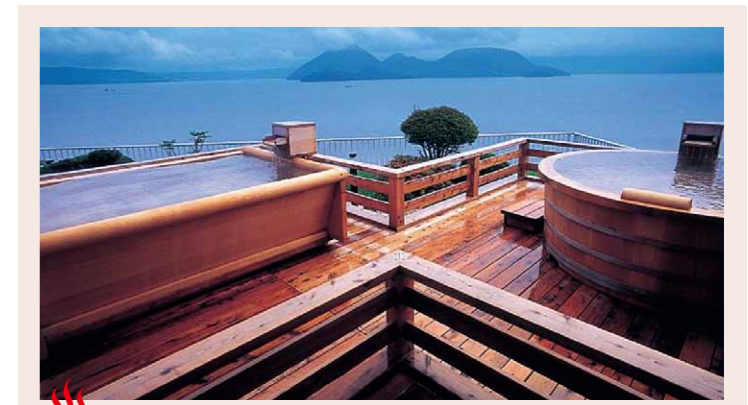
Northern Area

Eastern Area

General Information



27 Lake Toya (Toyako, Sobetsu)
Legend has it that Lake Toya is the home of a beautiful goddess. There are cruises around its four islands and long-running fireworks displays every evening from late April to late October.
■ Tel.0142-75-2446 (Toyako Onsen Tourist Association) J



Lake Toya Hot Springs (Toyako, Sobetsu)
This hot spring resort was the venue of the 2008 G8 Summit. The resort offers one of Hokkaido's top three landscapes, with views of Lake Toya, Mt. Yotei and the surrounding mountains.
■ Tel.0142-75-2446 (Toyako Onsen Tourist Association) J

28 Toya Caldera and Usu Volcano Global Geopark (Toyako)
See the effects of the volcanic eruption in 2000, including craters, wrecked roads and destroyed buildings. You'll also find a footpath where you can take in the atmosphere of the Global Geopark, and plenty of facilities such as a visitor center.
■ Tel.0142-74-3015 (Toya Caldera and Usu Volcano Global Geopark Council)



29 Usuzan Gondola (Sobetsu)
The summit of Mt. Usu offers a spectacular view of Lake Toya, Mt. Yotei and Mt. Showa-Shinzan, the lava dome created by one of Mt. Usu's eruptions. You can also see craters up close on the walking track near the summit.
■ Tel.0142-66-2750 (Sobetsu Tourist Association) J

30 Showa-Shinzan International Yukigassen Snowball Fight (Sobetsu)
Two teams battle it out in the "Yukigassen" snowball fight! The competition is intense, with teams coming from overseas to compete every year.
● Late Feb ● At the foot of Mt. Showa-Shinzan
■ Tel.0142-66-2244 (Showa-shinzan International Yukigassen Executive Committee) J



31 Mt. Orofure (Sobetsu, Noboribetsu)
Make sure to visit the viewpoint on this mountain, where you can see stunning scenery from the Pacific Ocean to Mt. Yotei. Orofure Pass is famous for the beautiful hoar frost that covers the trees in winter.



Shikotsu Toya National Park
A national park is a park designated by the national government for showcasing the best of Japanese natural scenery. Six of Japan's 30 national parks are in Hokkaido. You can't help but feel calmed by the harmonic combination of forest, lakes and mountains in Shikotsu Toya National Park. The 2008 G8 Summit was held at Lake Toya.





32 Noboribetsu Hell Valley (Noboribetsu)

An around 450m-wide crater formed by volcanic eruptions, Noboribetsu Hell Valley is named for its active geysers and fumaroles spurting water and steam, and bubbling pools of boiling water. You can bathe in these diverse and plentiful hot springs at the various hotels and inns nearby.

■Tel.0143-84-3311
(Noboribetsu Tourism Association)

33 The King of Hell "Enma" (Noboribetsu)

In the center of Noboribetsu Hot Spring Resort, you'll find a shrine (Enma-do) with a statue of Enma, the King of Hell. Traditional Japanese mechanisms make the statue move five to seven times a day.

■Tel.0143-84-3311
(Noboribetsu Tourism Association)



35 Noboribetsu Flower Tunnel (Noboribetsu)

In mid-May, Noboribetsu is adorned by the beautiful pink flowers of around 2,000 cherry trees, like a scene from a traditional Japanese scroll. You can see this spectacular sight on the way to Noboribetsu Hot Springs.

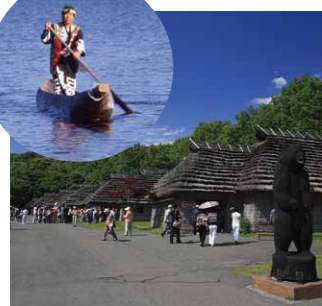
■Tel.0143-84-3311
(Noboribetsu Tourism Association)



34 Oyunuma Brook Natural Footbath (Noboribetsu)

Oyunuma River is a "hot spring river" that flows from Oyunuma. Dunk your feet in this natural foot bath on your way along the riverside walking track.

■Tel.0143-84-3311
(Noboribetsu Tourism Association)



36 The Ainu Museum POROTO KOTAN (Shiraoi)

Learn about Ainu history, lifestyle and culture and see performances of Ainu music and dance at the Ainu folk museum by Lake Poroto. The traditional Ainu dancing is an Important Intangible Folk Cultural Property of Japan and is even listed as a UNESCO Intangible Cultural Heritage.

●8:45am-5:00pm ●Closed Dec 29-Jan 5
*The facility will be closed after Mar 31, 2018, and is scheduled to reopen in Apr, 2020.
●Admission: ¥800
■Tel.0144-82-3914
(The Ainu Museum POROTO KOTAN) J



37 Lake Kuttara (Shiraoi)

This caldera lake in the Shiraoi area has some of the clearest water in Japan. The "mystery lake" is also extremely rare in that it is not connected to any rivers.

■Tel.0144-82-2216
(Shiraoi Tourist Association) J

Hidaka

Surrounded by sea and mountains, the Hidaka area is one of the warmest areas of Hokkaido with a comparatively low snowfall. It is famous for its racehorse breeding, the abundant alpine flora on its mountains and its specialties such as shishamo smelt.

38 Shizunai Nijucken Road (Shinhidaka)

This is Japan's longest cherry tree-lined road, with around 3,000 cherry trees lining a 7 km stretch of road. In early to mid-May, 200 thousands people come from all over Japan to see the spectacular sight of the trees in bloom.

■Tel.0146-42-1000
(Shinhidaka Tourist Association) J



Urakawa Yushun Village "AERU" (Urakawa)

Urakawa is famous for its horse breeding. You can ride horses at this accommodation facility, as well as enjoying park golf or a dip in a hot spring containing precious natural mineral ores.

■Tel.0146-28-2111
(Urakawa Yushun Village "AERU") J



Noboribetsu Hot Springs (Noboribetsu)

Noboribetsu is home to nine types of hot springs, each with different healing effects. With a greater variety than almost anywhere else in the world, Noboribetsu is often dubbed the "Hot Spring Department Store".

■Tel.0143-84-3311 (Noboribetsu Tourism Association)

34 Noboribetsu Date Jidaimura (Noboribetsu)

A vast theme park recreating a samurai town. Attractions include 94 buildings including a lord's house and ninja's house.

●9:00am-5:00pm
(closes at 4:00pm Nov-Mar)
●Open throughout the year
●Admission: ¥2,900

■Tel.0143-84-3311
(Noboribetsu Tourism Association)



Southern Area



Hakodate Esashi Matsumae

Southern Hokkaido is a fascinating fusion of east and west. Castles and tourist attractions where you can step back to samurai times are set against Western and Russian cultures amid romantic streets and year-round natural beauty. This area is full of surprises!



1 Onuma Quasi-national Park (Nanae)

With active volcano Mt. Komaga-take, Onuma and other lakes of all sizes and lush greenery, Onuma Quasi-national Park's natural scenery is so beautiful that it was selected as one of the New Three Views of Japan. It is said to be Hokkaido's first resort...and it's less than an hour by car from Hakodate!

■Tel.0138-67-3020
(Nanae Onuma International Tourism and Convention Association)

① Matsumae Castle/
Matsumae Castle Museum
② Matsumae Clan Mansion
③ Cherry Blossoms in Matsumae

④ Mt. Hakodate
⑤ Hakodate Russian Orthodox Church
⑥ The Special Historic Site Fort Goryokaku (Goryokaku Park)
⑦ Old Red Brick Warehouses
⑧ Old Public Hall Of Hakodate Ward
⑨ Motomachi Area
⑩ Hakodate Christmas Fantasy
⑪ Hakodate Trams

Hakodate

With countless unique attractions such as the “world’s best” night view, wide range of delicious seafood and traditional street scenery, Hakodate attracts over 4.3 million tourists each year.

2 Mt. Hakodate (Hakodate)

This 334m mountain towers over Hakodate, watching over the city streets. Artillery batteries and other war vestiges remain from its days as a military fortress. The viewpoint at the summit offers a night view that captivates tourists from throughout Japan and all over the world, whatever the season.

■Tel.0138-23-5440
(Hakodate Tourist Information Center)



3 Hakodate Russian Orthodox Church (Hakodate)

Built in 1916, this building houses a Russian Byzantine-style church established in 1859. Its distinctive white walls, green roof and crown-like domed turrets set a romantic scene with spring cherry blossoms, autumn leaves and winter snow as a backdrop.

●10:00am-5:00pm (Hours differ on Saturday and Sunday)
●Admission: ¥200
■Tel.0138-23-5440 (Hakodate Tourist Information Center)

4 The Special Historic Site Fort Goryokaku (Goryokaku Park) (Hakodate)

With a star-shaped fort that is a rare sight throughout the world, this area was the setting of the Battle of Hakodate in the late 19th century. It is now a park renowned for its cherry blossoms in spring. You’ll also find the restored building of the Hakodate Magistrate’s Office, which served as a municipal hall in the samurai days.

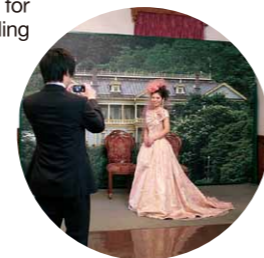
Hakodate Magistrate’s Office
●9:00am-6:00pm (closes 5:00pm Nov-Mar) ●Admission: ¥500
■Tel.0138-23-5440 (Hakodate Tourist Information Center)



6 Old Public Hall Of Hakodate Ward (Hakodate)

This distinctive blue-grey and yellow building is a must-see attraction for visitors to Hakodate. Built in 1910 as a meeting place for citizens, the building offers a view all the way to Hakodate Port from its second-floor balcony.

●9:00am-7:00pm (closes 5:00pm Nov-Mar)
●Admission: ¥300
■Tel.0138-23-5440 (Hakodate Tourist Information Center)



You can even have your photo taken in a gorgeous period costume! (fee applies)
■Tel.0138-23-5440
(Hakodate Tourist Information Center)



5 Old Red Brick Warehouses (Hakodate)

Located in the Bay Area near Hakodate Station, these seven red brick warehouses are one of Hakodate’s top tourist attractions. Each houses a different style of shop or restaurant, including souvenir shops.

■Tel.0138-23-5440
(Hakodate Tourist Information Center)

7 Motomachi Area (Hakodate)

The Motomachi area is one of Hakodate’s most popular areas, with strongly Western-influenced attractions, architecture that blends eastern and western influences and cobblestone streets creating a romantic atmosphere. There’s a new discovery at every turn!

■Tel.0138-23-5440 (Hakodate Tourist Information Center)



8 Trappist Monastery (Hokuto)

Japan’s first Catholic monastery built in 1896. The butter, cookies and jam made in the monastery are an iconic Hokkaido souvenir. The monastery is around 40 minutes by train from Hakodate, with Oshima-Tobetsu being the nearest station.

■Tel.0138-75-2139 (Trappist Monastery)



Yunokawa Hot Springs (Hakodate)

Yunokawa’s history as a hot spring resort dates back to 1453. There is a famous legend that says this water once cured a gravely ill feudal lord.

■Tel.0138-23-5440 (Hakodate Tourist Information Center)



11 Hokkaido Kombu Museum (Nanae)

This museum is dedicated to kombu kelp, a Hokkaido specialty renowned throughout Japan for its health benefits. As well as showing how kombu grows and is caught, the museum is one of only a few places where you can see kelp products being made. There are also plenty of delicious souvenirs to choose from.

●9:00am-5:00pm ●Closed Dec 31-Jan 1
●Admission: Free
■Tel.0138-66-2000 (Hokkaido Kombu Museum)



Shikabe Kanketsusen Park (Shikabe)

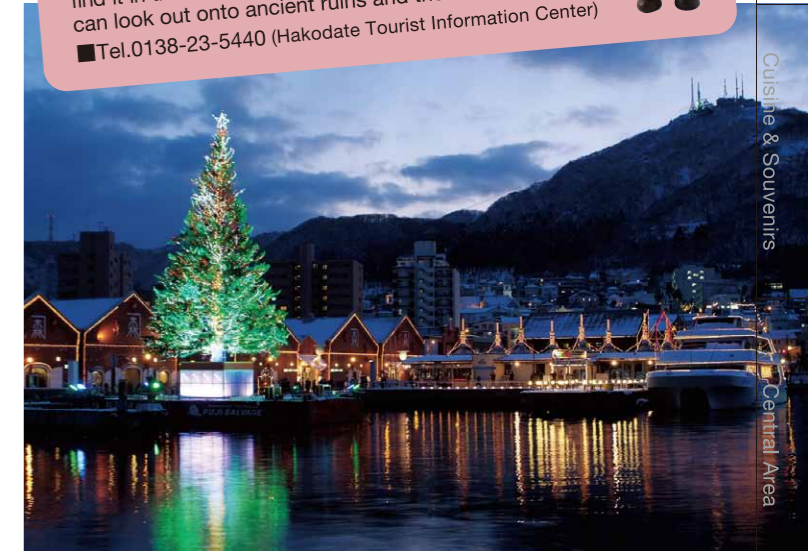
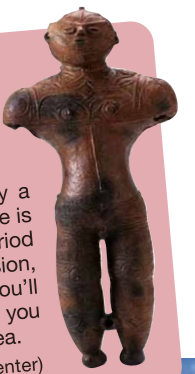
Shikabe is a hot spring paradise, with over 30 springs throughout the town. You’ll be enthralled by Shikabe Geyser, where water spurts over 15m high.

■Tel.01372-7-3500
(Shikabe Onsen Kankou Kyoukai)

The Hollow Clay Figure: Hokkaido’s Only National Treasure of Japan

This hollow clay figure was discovered in 1975 by a Hakodate local who was doing farm work. The figure is estimated to have been made in the late Jomon period, around 3500 years ago, and has a peaceful expression, beautiful body line and skillful geometric patterns. You’ll find it in the Hakodate Jomon Culture Center, where you can look out onto ancient ruins and the beautiful sea.

■Tel.0138-23-5440 (Hakodate Tourist Information Center)



9 Hakodate Christmas Fantasy (Hakodate)

Hakodate Christmas Fantasy is held in the Bay Area every year, with a giant Momi fir tree from Hakodate’s sister city of Halifax, Canada serving as a Christmas tree. In December, decorative lighting is also set up in the Motomachi areas, setting a Christmas mood.

●Dec 1-25 ●By the Old Brick Warehouses
■Tel.0138-23-5440 (Hakodate Tourist Information Center)



10 Hakodate Trams (Hakodate)

Hakodate’s main attractions, including Yunokawa Hot Springs, Goryokaku Park and Mt. Hakodate, are connected by trams, including the popular old-fashioned Hakodate Haikara-go, which runs from April to October every year. ■Tel.0138-23-5440 (Hakodate Tourist Information Center)



Esashi

Esashi has been a prosperous port town since the 17th century, serving as a port of call for commercial ships from all over Japan. Many historic buildings remain from the early days, giving you a unique insight into traditional Japanese culture.

12 Esashi Ubagami Grand Shrine Togyo Festival (Esashi)

This festival began over 370 years ago to express gratitude for a bountiful catch. Thirteen floats with lavish decorations and beautiful Japanese dolls are carried through the town to traditional music. This authentically Japanese scene is one of only a few of its kind in Hokkaido.

● Aug 9-11 ● Throughout the town
 ■ Tel.0139-52-4815 (Esashi Tourism Association) **J**



13 Esashi Inishie Road (Esashi)

"Inishie", a word for "olden days", is an apt name for this road extending from the station. The road is lined with countless historic buildings and monuments showing you how people lived and traded in the samurai days. There are also restaurants where you can enjoy traditional Esashi cuisine.

■ Tel.0139-52-4815 (Esashi Tourism Association) **J**

14 Esashi Oiwake Hall (Esashi)

Esashi Oiwake is a style of folk songs over 200 years old. As well as learning about the songs and their history, you can listen to Esashi Oiwake songs on a tatami mat and even learn how to sing one!

● 9:00am-5:00pm
 ● Admission: ¥500
 ■ Tel.0139-52-0920 (Esashi Oiwake Hall) **J**



15 Okushiri Island (Okushiri)

See unusual rocks on the seashore, view the island from a vantage point and enjoy the kind hospitality of the locals on this island off the coast of Southern Hokkaido. As well as fresh sea urchin and abalone, you can enjoy delicious mountain vegetables. Make sure you try Okushiri-style fish stew and take a walk on the scenic footpath.

■ Tel.01397-2-2351 (Okushiri) **J**



Matsumae

Located on the southern tip of Hokkaido, Matsumae is Japan's northernmost castle town, with such a traditional Japanese flavor that it has been dubbed "Little Kyoto in the North". It is also famous for its cherry blossoms, with over 10,000 cherry trees of 250 kinds.

16 Matsumae Castle/ Matsumae Castle Museum (Matsumae)

Japan's northernmost castle and the last to be built in the traditional style. The main tower is now a museum, where you can see armor, clothing, famous artworks and more. There's also an observatory where you can see all the way across the town to the Tsugaru Strait.

● 9:00am-5:00pm (Apr 10-Dec 10) ● Admission: ¥360
 ■ Tel.0139-42-2216 (Matsumae Castle/Matsumae Castle Museum) **J**



17 Matsumae Clan Mansion (Matsumae)

Step back to the period of the feudal government (Edo era 17th to mid-19th century) at this theme park. You'll feel like you're in a period film as you take in the 14 authentic buildings and even try on traditional Katchu armor (fee applies).

● 9:00am-5:00pm (Early Apr-end of Oct)
 ● Admission: ¥360
 ■ Tel.0139-43-2439 (Matsumae Clan Mansion) **J**



18 Cherry Blossoms in Matsumae (Matsumae)

Matsumae is home to 10,000 cherry trees of 250 varieties. Late April is the start of a month-long cherry blossom paradise as the different species bloom in succession in the Matsumae Park.

■ Tel.0139-42-2726 (Matsumae Tourism Promotion Association) **J**

Northern Area



Asahikawa

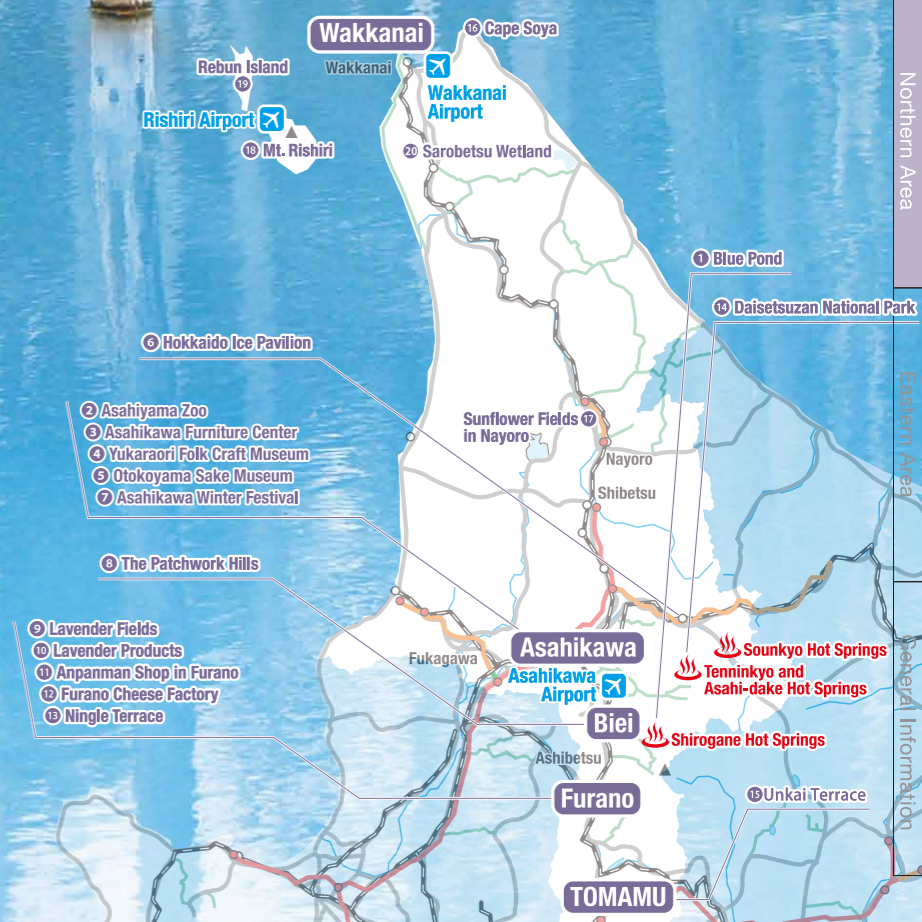
Biei

Furano

TOMAMU

Area around Wakkanai

Extending from Asahikawa and Furano areas to the northernmost point of Cape Soya, Northern Hokkaido has plenty to see and do, from beautiful flowers in the summer to iconic snow and ice events in the winter. The land and seas offer an abundance of mouthwatering foods, and the winter chill enhances the deliciousness of the area's top class sake.



1 Blue Pond (Biei)

This pond was formed in 1988 when a dam was created to protect citizens from eruptions of the nearby Mt. Tokachi-dake. It is named "Aoi Ike (Blue Pond)" for the bright blue color caused by sunlight hitting particles in the water, creating a uniquely beautiful scene that is becoming increasingly popular with Japanese and overseas tourists alike.

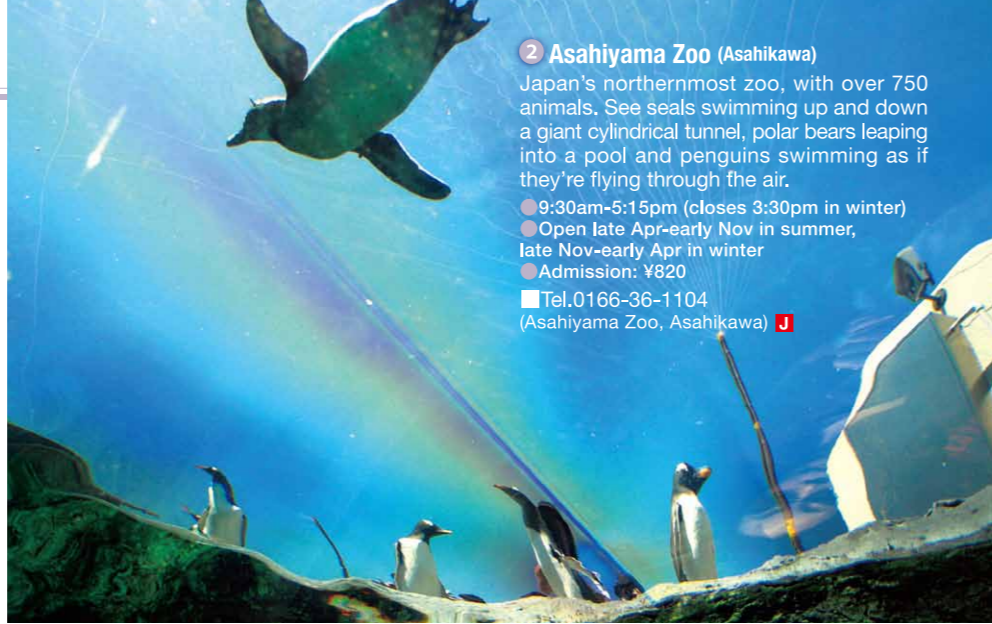
■ Tel.0166-92-4378 (Biei Tourism Association) **J**

Asahikawa

Asahikawa is Hokkaido's second largest city and Northern Hokkaido's transportation hub. It is famous for Asahiyama Zoo, where animals' natural lifestyle can be observed, and for its world-renowned wooden furniture. It is also well-known for its arts and cuisine.



3 Asahikawa Furniture Center (Asahikawa)
Asahikawa Furniture Center displays 1,700 pieces from 32 furniture makers based in and around Asahikawa. See, touch and try out chairs and other furniture that combine practicality with stunning designs. You can even buy furniture here too!
● 9:00am-5:00pm
● Closed on the 2nd and 4th weekend of each month and on public holidays.
■ Tel.0166-48-4135
(Asahikawa Furniture Industry Cooperative) J



2 Asahiyama Zoo (Asahikawa)
Japan's northernmost zoo, with over 750 animals. See seals swimming up and down a giant cylindrical tunnel, polar bears leaping into a pool and penguins swimming as if they're flying through the air.
● 9:30am-5:15pm (closes 3:30pm in winter)
● Open late Apr-early Nov in summer, late Nov-early Apr in winter
● Admission: ¥820
■ Tel.0166-36-1104
(Asahiyama Zoo, Asahikawa) J



5 Otokoyama Sake Museum (Asahikawa)
Otokoyama Brewery has made sake with Asahikawa's deliciously pure water for over 340 years. In addition to exhibits about how the sake is made, you can see sake sets from the Edo period and even ukiyo-e prints by the great Kitagawa Utamaro.
● 9:00am-5:00pm ● Admission: Free
■ Tel.0166-47-7080 (Otokoyama Sake Museum) J



4 Yukaraori Folk Craft Museum (Asahikawa)
Yukaraori was created by Aya Kiuchi, a dyeing and weaving artist from Asahikawa City. See beautiful works depicting the nature of Hokkaido in a manner reminiscent of an oil painting, each containing 200 to 300 different colors.
● 9:00am-5:00pm ● Admission: ¥450
■ Tel.0166-62-8811
(Yukaraori Folk Craft Museum) J



6 Hokkaido Ice Pavilion (Kamikawa)
Experience -20°C to -41°C (-4°F to -41.8°F) cold and see an ice-themed art gallery at the Ice Hall, the world's first and biggest attraction for enjoying cold and ice. You can even do various experiments!
● 8:30am-5:30pm
● Admission: ¥1,080
■ Tel.01658-2-2233
(Hokkaido Ice Pavilion) J



7 Asahikawa Winter Festival (Asahikawa)
Don't miss this vast festival with eight-story high snow sculptures that have made the Guinness Book of World Records, glittering ice sculptures and a giant snow slide.
● Mid-Feb
● By the Asahibashi Bridge, Ishikari River, Heiwa-dori Shopping Park
■ Tel.0166-25-7168
(Asahikawa) J

©TOMY

Tenninkyo and Asahi-dake Hot Springs (Higashikawa)
See the spectacular Hagoromo-no-Taki Falls at Tenninkyo Hot Springs in Daisetsuzan National Park. At Asahi-dake Hot Springs you can climb Mt. Asahi-dake in summer or enjoy snow sports in winter before relaxing in the hot springs at the foot of the mountain.
■ Tel.0166-82-3761 (Higashikawa Tourism Association) J



Sounkyo Hot Springs (Kamikawa)
This hot spring resort is located roughly in the center of 24 km columns near the foot of the Daisetsuzan Mountain Range. With its spectacular columnar joint and mountain backdrop, this is the ultimate Japanese hot spring scenery.
■ Tel.01658-2-1811 (Sounkyo Tourist Association) J

Biei

Take in the picturesque landscapes of rolling hills, vast sky and beautiful greenery and flowers that have graced many commercials and films. Look out over the area from its many viewpoints or enjoy a scenic drive through the winding country roads.

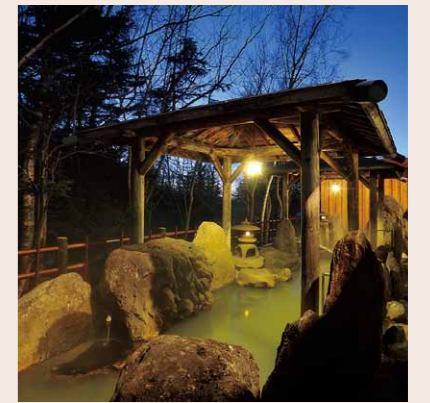
8 The Patchwork Hills (Biei)
Seasonal crops of all colors create a patchwork effect on the hills of Biei. Hokusei-no-Oka View Park offers full view of the patchwork hills.
● Best Attractions:
1) Ken and Mary Tree (Poplar)
2) Seven Stars Tree (Daimyo Oak)
3) The perfect proportions between Mild Seven Hill and its trees
■ Tel.0166-92-4378
(Biei Tourist Association) J



Ken and Mary Tree



Mild Seven Hill



©Biei Shirogane Hot Springs

Shirogane Hot Springs (Biei)
A top quality spring near the foot of the mountains with a breathtaking mountain view. The refreshing sight of white birch trees can also be seen on the way from Biei.
■ Tel.0166-94-3025
(Biei Shirogane Spa Association) J

Furano

Located roughly in the center of Hokkaido, Furano was the setting of the nationally aired TV show "Kita no Kuni Kara (The Northern Country)". The mountainous city is covered with fragrant purple lavender in summer and world-famous snow in winter.



9 Lavender Fields (Furano)

In summer, the area is filled with the dainty purple flowers and delicate fragrance of lavender. The vast fields throughout Furano and its surrounding towns begin to bloom in late June, reaching their best in mid to late July. One of the best summer sights in Hokkaido!
■ Tel.0167-22-5777 (Furano Tourism Association)



10 Lavender Products (Furano)

The scent of lavender has been known for its relaxation properties since the days of Ancient Rome. Take home potpourri, bath salts and soaps made from gorgeously scented lavender from the fields and gardens of Furano.
■ Tel.0167-22-5777
(Furano Tourism Association)

11 Anpanman Shop in Furano (Furano)

Anpanman is loved by kids not only in Japan but throughout Asia. In Furano Jam Garden you'll find an Anpanman shop run by creator Takashi Yanase himself, with a gallery of precious celluloid pictures and Hokkaido's biggest Anpanman merchandise shop.
● 9:00am-5:30pm
■ Tel.0167-29-2235
(Anpanman Shop in Furano) J



12 Furano Cheese Factory (Furano)

This factory produces and sells delicious natural butter and cheese made from fresh milk, including Japan's first red wine cheese. You can even try rich Furano milk, ice cream and freshly baked pizza.
● 9:00am-5:00pm (closes 4:00pm in winter)
● Closed during New Year's holiday period and for maintenance
■ Tel.0167-23-1156
(Furano Cheese Factory) J



13 Ningle Terrace (Furano)

This shopping area in the forest was created by So Kuramoto, who wrote the Furano-based TV show "Kita no Kuni Kara (The Northern Country)". You'll find 15 shops such as craft shops, studios and cafes in charming log cabins.
● 12:00pm-8:45pm
■ Tel.0167-22-1111
(New Furano Prince Hotel)



14 Daisetsuzan National Park (Furano and other areas)

Daisetsuzan National Park is the largest national park in Japan and is home to Hokkaido's highest mountain, Mt. Asahi-dake. The hot spring resorts near the foot of the mountains, such as Sounkyo, Tenninkyo, Shirogane and Lake Shikaribetsu, are highly popular bases for outdoor activities and sightseeing in the mountains.
■ Tel.0166-97-2153 (Asahi-dake Visitor Center)
■ Tel.01658-9-4400 (Sounkyo Visitor Center) J

TOMAMU

An all-inclusive resort in Shimukappu, a nature-rich village in the center of Hokkaido. There's plenty for you to enjoy, from a terrace where you can see the clouds at your feet in summer to skiing on some of Hokkaido's best powder snow in winter and a variety of nature experiences.



15 Unkai Terrace (Shimukappu)

Take a gondola to this terrace above the clouds and see majestic mountains reaching through the carpet of white clouds at your feet. This spectacular scenery can only be seen in summer and autumn.

- Early morning: mid May-mid Oct
- Admission: ¥1,900

■ Tel.0167-58-1111 (Hoshino Resort Tomamu)

Chapel on the Water (Shimukappu)

Coexistence with nature is the core concept of this unique church built by world-renowned architect Tadao Ando. The giant cross rises out of waters reflecting the sky, creating a magical atmosphere.



Area around Wakkanai

Japan's northernmost region has a lot to offer, from the frontier city of Wakkanai to the floral paradises of Rishiri and Rebun Islands. Make sure to try some of the region's famously delicious seafood.



16 Cape Soya (Wakkanai)

On a clear day, you can see the Russian island of Sakhalin from this cape at the northernmost point of Japan. It is surrounded by parks, monuments and cultural properties, with the periglacial landscape of the gently rolling Soya Hills as a backdrop.

■ Tel.0162-23-6468 (Wakkanai) J

17 Sunflower Fields in Nayoro (Nayoro)

From late July to mid-August, you can see over 6 million charming sunflowers under the vast summer sky. Take in this fairy tale scenery that has even appeared in films.

■ Tel.01654-3-2111 (Nayoro) J



Provided by Nayoro City

19 Rebun Island (Rebun)

This island in the Sea of Japan is Japan's northernmost island. Summer brings around 300 kinds of alpine flowers, including some unique to the island. Take a stroll along the popular footpath and see them for yourself.

■ Tel.0163-86-1001 (Rebun Island Tourist Association) J



18 Mt. Rishiri (Rishiri, Rishirifuji)

Also known as Rishiri-Fuji for its beautiful shape that resembles Mt. Fuji, Mt. Rishiri is a treasure trove of alpine plants, many of which cannot be found anywhere else. From the summit you can see the neighboring Rebun Island and even Sakhalin!

■ Tel.0163-82-1114 (Rishirifuji Kanko Kyoukai) J



20 Sarobetsu Wetland (Toyotomi)

In the center of the vast plain, you'll find a wild flower garden with 100 kinds of flowers. Learn about the nature and history of the marsh at the Sarobetsu Wetland Center and take a stroll through the magnificent scenery on the walking tracks!

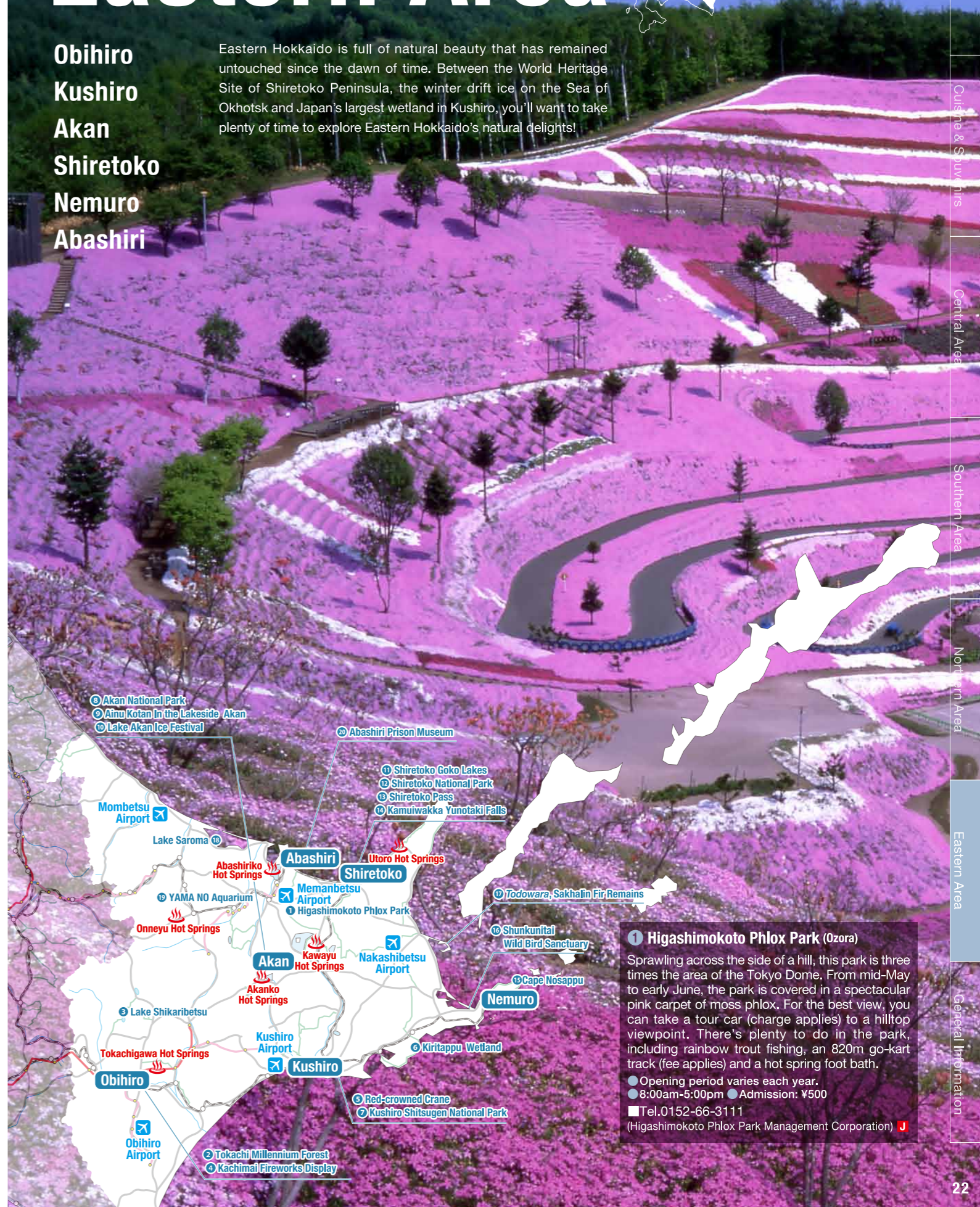
■ Tel.0162-82-1728 (Toyotomi Tourist Association) J

Eastern Area



Obihiro
Kushiro
Akan
Shiretoko
Nemuro
Abashiri

Eastern Hokkaido is full of natural beauty that has remained untouched since the dawn of time. Between the World Heritage Site of Shiretoko Peninsula, the winter drift ice on the Sea of Okhotsk and Japan's largest wetland in Kushiro, you'll want to take plenty of time to explore Eastern Hokkaido's natural delights!

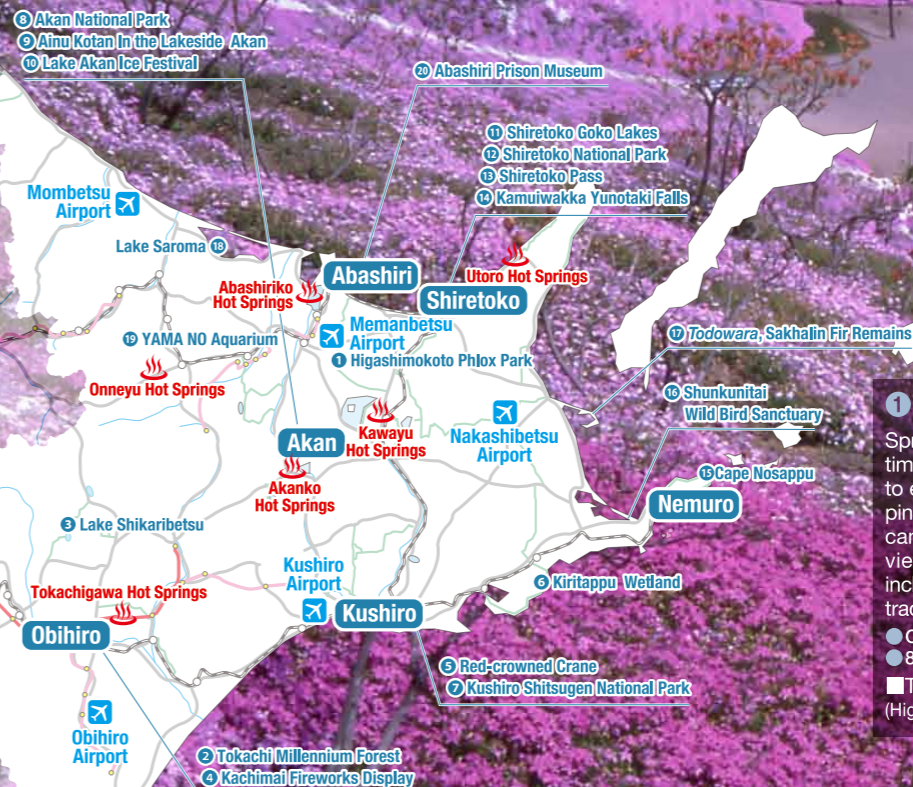


1 Higashimokoto Phlox Park (Ozora)

Sprawling across the side of a hill, this park is three times the area of the Tokyo Dome. From mid-May to early June, the park is covered in a spectacular pink carpet of moss phlox. For the best view, you can take a tour car (charge applies) to a hilltop viewpoint. There's plenty to do in the park, including rainbow trout fishing, an 820m go-kart track (fee applies) and a hot spring foot bath.

- Opening period varies each year.
- 8:00am-5:00pm ● Admission: ¥500

■ Tel.0152-66-3111 (Higashimokoto Phlox Park Management Corporation) J



Obihiro

Obihiro is the only designated city in Tokachi, which has the most breathtakingly vast expanses of land in all of Hokkaido. It is a flourishing farming area due to its fertile land and abundant nature. The area is also famous for its sweets and as the birthplace of pork donburi (rice bowl).



2 Tokachi Millennium Forest (Shimizu)

Enjoy cuisine from one of Japan's most prolific farming areas or meet adorable goats raised in the forest, surrounded by the natural Hokkaido beauty of this vast area. You can even try riding a Segway!

- 9:30am-5:00pm (varies for each attraction)
- Closed in winter
- Admission: ¥1,000

■ Tel.0156-63-3000 (Tokachi Millennium Forest)



3 Lake Shikaribetsu (Shikaoi)

Daisetsuzan National Park's only natural lake, Lake Shikaribetsu is surrounded by primeval forest that is home to pikas, living fossils from the Ice Age.

■ Tel.0156-66-4034 (Shikaoi Tourist Association)

4 Kachimai Fireworks Display (Obihiro)

Fireworks displays are a ubiquitous summer tradition in Japan, but few in Hokkaido come close to rivaling the size and beauty of this hugely popular display.

● mid Aug
■ Tel.0155-22-7555 (Tokachi Mainichi Newspaper)



9 Tokachigawa Hot Springs (Otofuke)

This hot spring resort 20 minutes by car from Obihiro Station is known for its golden-brown water containing large amounts of plant matter that is extremely good for the skin.

■ Tel.0155-32-6633 (Otofuke Tokachigawa Onsen Tourist Association)

Kushiro

Located in the southeast of Hokkaido, Kushiro is one of Eastern Hokkaido's most famous cities. The city center faces onto a beautiful harbor with Pacific saury and salmon, and inland you'll find the expansive Kushiro Wetland and other unspoiled nature.

5 Red-crowned Crane (Kushiro, Tsurui and other areas)

The red-crowned crane is a Special Natural Monument of Japan that can currently only be found in Eastern Hokkaido. In Kushiro City you'll find the Japanese Crane Reserve, which raises around 20 red-crowned cranes at any given time.

● Japanese Crane Reserve: 9:00am-6:00pm (closes 4:00pm Oct 9-Apr 9) ● Admission: ¥470

■ Tel.0154-56-2219 (Japanese Crane Reserve)



7 Kushiro Shitsugen National Park (Kushiro and other areas)

Kushiro Wetland is Japan's largest wetland and the first in Japan to be designated a Ramsar Wetland of International Importance in 1980. It is home to various waterfowl such as the red-crowned crane and a wide range of other rare wild fauna.

■ Tel.0154-31-1993 (Kushiro Tourism Association)



6 Kiritappu Wetland (Hamanaka)

Surrounded by forest and sea, Kiritappu Wetland is renowned for its profusions of diverse alpine and saltwater flowers that can be seen from spring to autumn. Many people also come to see the yachi-bozu, overgrown sedge roots forming unusual shapes like natural works of art.

■ Tel.0153-62-2111 (Hamanaka Tourist Association)

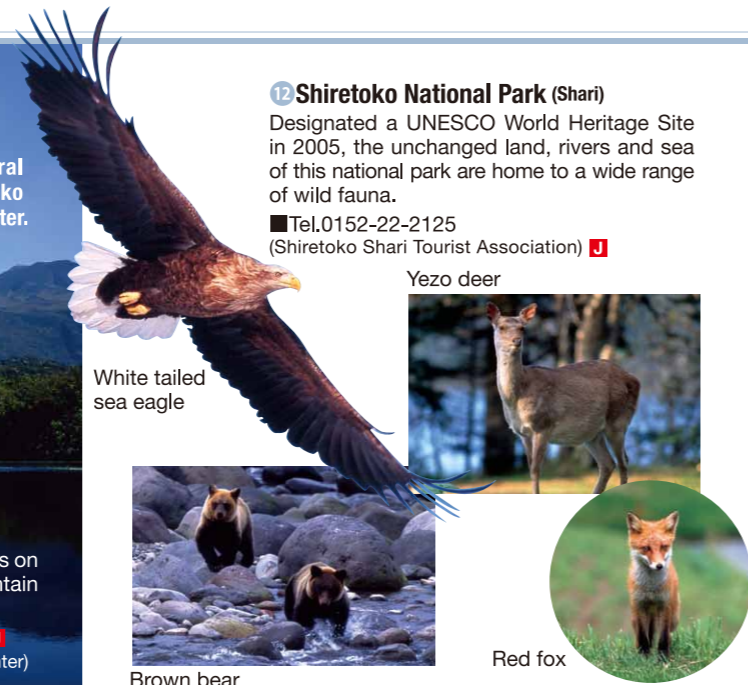
Shiretoko

Shiretoko National Park is a World Heritage Site with unspoiled natural ecosystems remaining from ancient times. Nearby you'll find the Shiretoko World Heritage Conservation Center and Shiretoko National Park Nature Center.

11 Shiretoko Goko Lakes (Shari)

Five magical lakes surrounded by primeval forest. Stroll around all five lakes on the walking track and see a breathtaking panorama of the Shiretoko Mountain Range from the viewpoint. You might even see a wild animal or two!

■ Late Apr-mid Nov Tel.0152-24-3323 (Shiretoko Goko Lakes Field House)
■ Period other than above Tel.0152-24-2114 (Shiretoko National Park Nature Center)



White tailed sea eagle

Yezo deer

Brown bear

Red fox

12 Shiretoko National Park (Shari)

Designated a UNESCO World Heritage Site in 2005, the unchanged land, rivers and sea of this national park are home to a wide range of wild fauna.

■ Tel.0152-22-2125 (Shiretoko Shari Tourist Association)

Akan

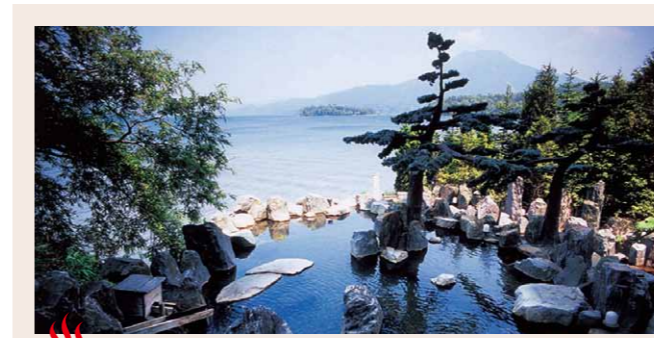
Surrounded by majestic mountains and primeval forest, this hot spring town has plenty to do. Enjoy outdoor activities on and around the water in summer or in the mountains in winter. A rich Ainu culture also remains - discover the culture and history of Hokkaido's indigenous people.



9 Ainu Kotan in the Lakeside Akan (Akanko Hot Springs, Kushiro)

Walk up the Ainu kotan (village) hill lined with folk craft stores and right in front of you, you'll find Onne Chise, a traditional building that was used for Ainu dance performances until 2011. The following year, the Ainu Theater Ikoro was completed behind Onne Chise, where you can enjoy traditional Ainu dance performances, puppet plays and the Iomante Fire Festival (fee applies).

● Inquire in advance about performance times.
■ Tel.0154-67-2727 (The Akan Ainu Industrial Arts Association)



Akanko Hot Springs (Akanko Hot Springs, Kushiro)

A popular hot spring among the Ainu people in the mid-19th century, this resort includes small hand and foot baths.

■ Tel.0154-67-3200 (Akan Tourism Association)

8 Akan National Park (Kushiro and other areas)

This national park is full of unique sights, including Lake Mashu, one of the world's clearest lakes, Lake Kussharo, Japan's largest caldera lake, Lake Akan, and Onneto. You can see Mt. Meakan-dake and Oakan-dake rising majestically in the background. Lake Akan is known for its marimo (a type of floating green algae ball, which is a Special Natural Monument of Japan).



10 Lake Akan Ice Festival (Akanko Hot Springs, Kushiro)

Build snowmen, go inside snow igloos and enjoy ice slides on the ice over Lake Akan. Experience all the fun that the Hokkaido winter has to offer!

● Early Feb-mid Mar
● On the ice over Lake Akan
■ Tel.0154-67-3200 (Akan Tourism Association)



Kawayu Hot Springs (Teshikaga)

A truly authentic Japanese hot spring, with steam rising and the scent of sulfur wafting through the air. The spring is also renowned for its quality.

■ Tel.015-482-2200 (Lake Mashu Tourist Association)



13 Shiretoko Pass (Shari)

Located on a 738 m (2,412.3 foot)-high ridge in the Shiretoko Mountain Range, you can see snow on this pass even in late July. On a clear day you can see as far as Kunashiri Island and the brightly colored autumn leaves of Mt. Rausu-dake are truly spectacular.

● Open late Apr-early Nov
■ Tel.0152-22-2125 (Shiretoko Shari Tourist Association)

14 Kamuiwakka Yunotaki Falls (Shari)

This waterfall is created by a hot spring formed on the active volcano of Mt. Iou. The spring flows into the river, making the entire river look like a flowing hot spring. This extremely popular attraction is one of the top eight scenic spots of Shiretoko.

■ Tel.0152-22-2125 (Shiretoko Shari Tourist Association)



Utoro Hot Springs (Shari)

This hot spring resort is the place to stay when touring Shiretoko! The various accommodation facilities offer everything you could want, including the finest cuisine and even events.

■ Tel.0152-22-2125 (Shiretoko Shari Tourist Association)

Nemuro

Take in the countless scenic spots where the land meets the sea, then tuck into the most delicious crab and other fresh seafood that you'll ever taste. There is so much to enjoy here in the easternmost part of Hokkaido.



15 Cape Nosappu (Nemuro)

The first place to see the sun each morning, making it a hugely popular destination for the first sunrise of the year. It is also home to Hokkaido's oldest lighthouse, with a history dating back to 1890.

■Tel.0153-24-3104
(Nemuro Tourist Association)

16 Shunkunitai Wild Bird Sanctuary (Nemuro)

This narrow 8 km by 1.3 km (5 by 0.8 mile) spit has been dubbed a "miracle island" for the unique northern plants that cover the sand in summer. Take a stroll through the crisp air of Shunkunitai.

■Tel.0153-24-3104
(Nemuro Tourist Association)



17 Todowara, Sakhalin Fir Remains (Betsukai)

The remains of these Sakhalin fir trees eaten away by the sea brine look like a scene from the end of the world, but in summer they are surrounded by delicately beautiful flowers, creating a surreal scene.

■Tel.0153-82-1270
(Notsuke Peninsula Tourist Information Center)

Abashiri

The main city of the Okhotsk coastline, Abashiri offers a truly diverse range of seasonal landscapes. Particularly popular is the drift ice that covers the Sea of Okhotsk in winter.



18 Lake Saroma (Kitami)

Hokkaido's largest lake. Around Lake Saroma you'll find Wakka Wild Flower Garden and Tokoro Ruin Forest, where over 300 kinds of flowers jostle for position. The lake is also famous for its sunset views from the east side, and for its delectable scallops.

■Tel.0152-54-2140 (Tokoro Tourist Association)



19 YAMA NO Aquarium (Kitami)

See Japan's first man-made recreation of a waterfall basin and the world's first aquarium that freezes in winter. Marvel at the size of the legendary freshwater Sakhalin taimen and see giant fish grown in hot spring water.

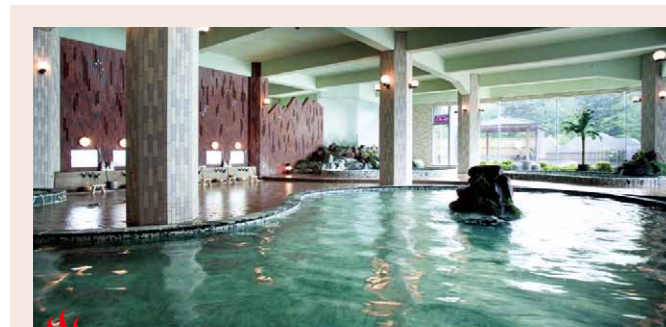
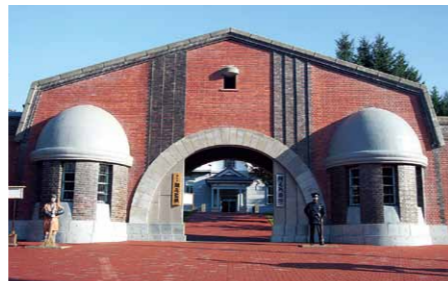
● 8:30am-5:00pm (9:00am-4:30pm in winter) ● Admission: ¥670
■Tel.0157-45-2223
(YAMA NO Aquarium)

20 Abashiri Prison Museum (Abashiri)

See the buildings that actually housed Abashiri Prison from the late 19th century (Meiji era) onward at this open-air historical museum. Moved from their original location and carefully preserved, these ten buildings are of such historical significance that they have been designated a Tangible Cultural Property of Japan.

● 8:30am-6:00pm
(9:00am-5:00pm Oct-Apr)
● Admission: ¥1,080

■Tel.0152-45-2411
(Abashiri Prison Museum)



Abashiriko Hot Springs (Abashiri)

From resort hotels to Japanese-style inns and auberges (French-style inn and restaurant), there's accommodation for everybody and every occasion.

■Tel.0152-44-6111 (Abashiri)

Onneyu Hot Springs (Kitami)

This hot spring resort has a history of over a century. The accommodation facilities at this resort provide this famously skin-whitening hot spring water straight from the source.

■Tel.0157-45-2921 (Onneyu Onsen Tourist Association)



Useful Expressions Talk to the Locals!

Greetings

Here are some simple greetings. Why not try saying some of these to the locals?

Good morning.	Oha yo u Gozaimasu
Hello/Good afternoon.	Kon ni chi wa
Good evening.	Kon ban wa
Good night.	Oyasumi nasai
Nice to meet you.	Hajime mashite
Thank you. (in advance)	Yoroshiku onegai shimasu
Thank you.	Arigatou Gozaimasu
I'm sorry.	Gomen nasai
Goodbye.	Sayo u nara
I hope to see you again.	Mata Aimashou

Used when asking somebody to do something for you.

"Point at the Sentence" Travel Conversation Booklet

Home >> Library >> Brochures



visit HOKKAIDO
<http://en.visit-hokkaido.jp>

Asking for Help

Here are some useful expressions to use when shopping or getting around Hokkaido.

Where is ●●?	●● wa doko desuka	Show them your map and they can show you the way.
What is this?	Kore wa nan desuka	Use this if you would like to know what is in a dish.
How much is this?	Kore wa ikura desuka	
Is this made in Hokkaido?	Kore wa HOKKAIDO san desuka	
What do you recommend?	Osusume wa nan desuka	Useful question to ask store employees.
Could you please show me how to eat this?	Tabekata wo oshiete kudasai	
Could you please show me how to use this?	Tsukaikata wo oshiete kudasai	
Could you please take my photo?	Shashin wo totte kudasai	
Which souvenirs are popular?	Ninki no omiyage wa doredesuka	
Do you speak English?	Eigo wo hanase masuka	

Making Conversation

Why not try making conversation with shop employees or people you meet at tourist attractions?

I am from ●●.	●● kara kimashita
My name is ●●.	Watashi no namae wa ●● desu
I'm really enjoying Hokkaido.	HOKKAIDO wa itokoro desune
I went to ●● (and ●●).	●● (to ●●) ni ikimashita
I'm going to go to ●● too.	●● nimo iki masu
This looks delicious.	Oishi sou desune
Where can I buy that?	Sore wa doko de kaemasuka
This is really fun!	Totemo tanoshii desu
We are friends.	Watashi tachi wa tomodachi desu
I hope you can come to my country too.	Watashino kuni nimo asobini kite kudasai

A good topic of conversation with locals.

Model Courses

Here are some examples of tour courses in each area of Hokkaido that will give you some ideas as you plan your own unique adventure!

5 days in Central Area

1 day	✈️ New Chitose Airport ▶ Niseko  Mt. Yotei ▶P11	Lodging Niseko
2 day	Niseko (Outdoor activities etc.)  ▶P04 ▶ Niki (Fruit Picking)  ▶P04 ▶ Otaru  ▶P11	Lodging Otaru
3 day	Otaru (Making a Music Box, strolling around, eating sushi etc.)  ▶P05 ▶ Jozankei	Lodging  Jozankei Hot Springs
4 day	Sapporo (Strolling around Jozankei Area, Sightseeing: Hokkaido Government Office Building in Sapporo, Hitsujigaoka Observation Hill etc.)  ▶P11  ▶P11  ▶P11	Lodging Sapporo
5 day	Sapporo (Shopping) ▶ New Chitose Airport ✈️	

5 days in Southern Area

1 day	✈️ New Chitose Airport ▶ Lake Toya  Lake Toya ▶P12	Lodging  Lake Toya Hot Springs
2 day	Lake Toya (Sightseeing Cruise etc.) ▶ Sobetsu (Mt. Showa-Shinzan) ▶ Hakodate (Night View)	Lodging  Hakodate Yunokawa Hot Springs
3 day	Hakodate (Hakodate Morning Market, Goryokaku Park etc.)  ▶P05  ▶P15 ▶ Onuma  ▶P04 ▶ Noboribetsu	Lodging  Noboribetsu Hot Springs
4 day	Noboribetsu (Hell Valley, Noboribetsu Date Jidaimura etc.)  ▶P13  ▶P13 ▶ Shiraoi (Ainu Folk Museum etc.)  ▶P13 ▶ Sapporo	Lodging Sapporo
5 day	Sapporo (Sightseeing & shopping) ▶ New Chitose Airport ✈️	

5 days in Northern Area

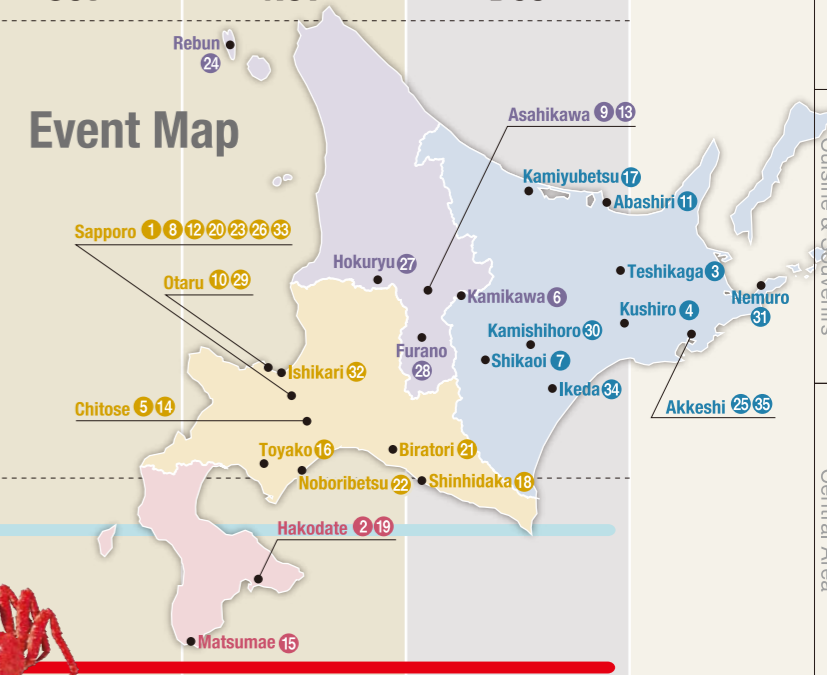
1 day	✈️ New Chitose Airport ▶ Sapporo (Susukino)  Susukino ▶P10	Lodging Sapporo
2 day	Sapporo (Sightseeing: Odori Park, Clock Tower, Hokkaido Government Office Building etc. & Shopping) ▶ Asahikawa	Lodging Asahikawa
3 day	Asahikawa (Asahiyama Zoo, Yukaraori Folk Craft Museum etc.)  ▶P19  ▶P19 ▶ Furano and Biei  ▶P20	Lodging  Shirogane Hot Springs
4 day	Furano and Biei (Lavender Fields, Cycling etc.)  ▶P20  ▶P20  ▶P20 ▶ Sapporo 	Lodging Sapporo
5 day	Sapporo ▶ New Chitose Airport ✈️	

5 days in Eastern Area

1 day	✈️ New Chitose Airport ▶ Sapporo (Sightseeing & shopping)  JR Tower ▶P09	Lodging Sapporo
2 day	Sapporo ▶ Obihiro (Sweets and Pork Donburi etc.)  ▶P06  ▶P06 ▶ Otofuke  ▶P23	Lodging  Tokachigawa Hot Springs
3 day	Tokachigawa (Hot-Air Balloon Rides etc.)  ▶P04 ▶ Ikeda (Wine Castle) ▶ Kushiro	Lodging Kushiro
4 day	Kushiro (Washo Market, Wetland etc.)  ▶P06  ▶P23 ▶ Lake Akan (Ainu Culture)  ▶P24	Lodging  Akanko Hot Springs
5 day	Lake Akan ▶ Kushiro Airport ✈️	

Hokkaido Calendar

Month	Jan	Feb	Mar	Apr	May	Jun	Jul	Aug	Sep	Oct	Nov	Dec									
Events	Winter 1 Sapporo White Illumination [Late Nov-early Jan] (Sapporo) 2 Hakodate Christmas Fantasy [Early-late Dec] (Hakodate) 3 Diamond Dust in KAWAYU [Mid Dec-late Mar] (Teshikaga) 4 Akan Ice Festival [Late Jan-late Mar] (Kushiro) 5 Chitose & Lake Shikotsu Ice Festival [Late Jan-mid Feb] (Chitose) 6 Sounkyo Hyobaku Festival [Late Jan-late Mar] (Kamikawa) 7 Lake Shikaribetsu Ice Village [Mid Jan-late Mar] (Shikaoi) 8 Sapporo Snow Festival [Early Feb] (Sapporo) 9 Asahikawa Winter Festival [Early Feb] (Asahikawa) 10 Otaru Yukiakari no Michi (Snow Light Path) [Early Feb] (Otaru) 11 Abashiri Okhotsk Drift Ice Festival [Early-mid Feb] (Abashiri) 12 International Dog Sled Race in Sapporo [Early Mar] (Sapporo) 13 Vasaloppet Japan [Late Mar] (Asahikawa)			Spring 14 Lake Shikotsu Opening Festival [Mid Apr] (Chitose) 15 Matsumae Cherry Blossom Festival [Late Apr-late May] (Matsumae) 16 Lake Toya Long-Run Fireworks Festival [Late Apr-late Oct] (Toyako) 17 Kamiyubetsu Tulip Fair [Early May-early Jun] (Kamiyubetsu) 18 Shizunai Cherry Blossom Festival [Early May] (Shinhidaka) 19 Hakodate Goryokaku Festival [Late May] (Hakodate) 20 Sapporo Lilac Festival [Late May] (Sapporo) 21 Viewing of Lily of the Valley [Late May-early Jun] (Biratori)			Summer 22 Onibi no Michi (Road of Wildfire) [Early Jun-late Nov] (Noboribetsu) 23 YOSAKOI Soran Festival [Early Jun] (Sapporo) 24 Rebun Flower Festival [Early Jun] (Rebun) 25 Akkeshi Iris Festival [Late Jun-early Jul] (Akkeshi) 26 Pacific Music Festival [Early Jul-early Aug] (Sapporo and other cities) 27 Hokuryu Sunflower Festival [Mid Jul-late Aug] (Hokuryu) 28 Hokkai Navel Festival [Late Jul] (Furano) 29 Otaru Ushio Festival [Late Jul] (Otaru) 30 Hokkaido Balloon Festival [Early Aug] (Kamishihoro)			Autumn 31 Nemuro Crab Festival [Early Sep] (Nemuro) 32 Ishikari Salmon Festival [Mid Sep] (Ishikari) 33 Sapporo Autumn Fest [Mid-late Sep] (Sapporo) 34 Autumn Wine Festival [Early Oct] (Ikeda) 35 Akkeshi Oyster Festival [Early Oct] (Akkeshi)											
Food	Squid: All Year Round			Sea Urchin: May-Sep			Melon: Jun-late Jul			King Crab: Sep-Dec											
Sunrise / Sunset	7:01am / 4:30pm	6:27am / 5:11pm	5:38am / 5:47pm	4:45am / 6:23pm	4:06am / 6:56pm	3:55am / 7:17pm	4:13am / 7:08pm	4:46am / 6:30pm	5:19am / 5:36pm	5:54am / 4:44pm	6:33am / 4:07pm	7:02am / 4:03pm									
Temp. (high/low)	0.8 / -4.7	1.8 / -5.2	4.4 / -2.4	10.6 / 2.7	16.8 / 8.9	23.8 / 15.2	24.2 / 16.3	28.3 / 19.6	23.1 / 15.8	16.1 / 7.6	7.7 / 0.2	1.9 / -3.1									
Flowers & Plants	Cherry Blossom: Late Apr-mid May			Tulip: Early May-early Jun			Moss pink: Mid May-late Jun			Lavender: Mid Jun-late Jul			Sunflower: Mid Jul-late Aug			Glasswort: Mid-late Sep			Autumn leaves: Mid Sep-late Oct		



An overcoat, gloves, hat and suitable shoes for walking on snow and ice are essential.

Early mornings and evenings are chilly, so make sure to bring a light coat or long-sleeved jacket.

Best Season

Some days reach over 30°C (86°F), but you may need a light jacket at night or if visiting the mountains or lakes.

You'll need a sweater or coat when the autumn leaves reach the plains.

Brief Guide to Hokkaido

Hokkaido is the northernmost island in Japan and is surrounded by the Pacific Ocean, Sea of Japan and Sea of Okhotsk. Thanks to its fertile land and abundant seas, Hokkaido enjoys thriving crop farming, stock farming and fishing industries, producing top-quality foods year round that have put Hokkaido on the map as a gastronomic paradise.



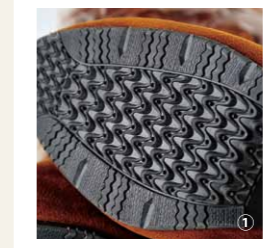
It also offers spectacular natural scenery that cannot be seen anywhere else in Japan, with five quasi-national parks, the World Heritage Site of Shiretoko, Toya Caldera and Usu Volcano Global Geopark and 13 Ramsar Wetlands of International Importance. In Hokkaido you don't have to go far to see majestic, age-old mountains, lush greenery and forests, wetlands and lakes that are home to a diverse range of flora and fauna. Hokkaido's seasons are very distinct. Summers are comfortable with little humidity and winter brings beautiful snow and subzero chills.

Statistics

Location: 41.21-45.33°N
139.20-148.53°E
Area: 83,456 km² (32,223 square miles)
Population: 5,416,711 (as of end of March 2014)

Hokkaido is Japan's northernmost and largest administrative region, accounting for around 22% of Japan's overall area. It has the eighth highest population of Japan's 47 administrative regions, and has 179 municipalities.

Important points about winter sightseeing in Hokkaido Winter Shoes and Walking on Snow



High-heels or regular flat shoes (shoes without much grip) are not suitable for Hokkaido winters. You need to bring or purchase winter shoes that have a thick, strong grip (pic.①) or non-slip attachments. There are many types of non-slip attachments available that can easily be fitted to most types of shoe (pic.②). You can purchase them at the airport, convenience stores or shoe shops. Also, when walking on icy roads, you should try and bring your foot down flat on the road surface and walk with a shorter stride, kind of like a penguin.

Activities
Cuisine & Souvenirs
Central Area
Southern Area
Northern Area
Eastern Area
General Information

Activities
Cuisine & Souvenirs
Central Area
Southern Area
Northern Area
Eastern Area
General Information

Getting Around Hokkaido

All you need to know about flights, trains (JR), ferries, car rentals and intercity buses in Hokkaido!

See each service provider's website for more details.

By Train

Areas throughout Hokkaido are connected by JR railway services. There are convenient express services to all major cities. There are also a large number of trains from New Chitose Airport to Sapporo and Otaru for your convenience.

Limited express trains

Ltd. Exp. Super-Kamui	Sapporo ⇄ Asahikawa
Ltd. Exp. Super-Lilac	About 1 h 30 min
Ltd. Exp. Super-Tokachi	Sapporo ⇄ Obihiro
Ltd. Exp. Super-Ozora	About 2 h 40 min
Ltd. Exp. Super-Soya	Sapporo ⇄ Wakkanai
	About 5 h 10 min
Ltd. Exp. Super-Hokuto	Sapporo ⇄ Hakodate
	About 3 h 30 min
Ltd. Exp. Super-Ozora	Sapporo ⇄ Kushiro
	About 4 h 10 min
Ltd. Exp. Okhotsk	Sapporo ⇄ Abashiri
	About 5 h 30 min

JR Hokkaido Rail Pass

3-day	Ordinary Car	¥16,500
	Children(age 6-11)	¥8,250
Flexible 4-day	Ordinary Car	¥22,000
	Children(age 6-11)	¥11,000
5-day	Ordinary Car	¥22,000
	Children(age 6-11)	¥11,000
7-day	Ordinary Car	¥24,000
	Children(age 6-11)	¥12,000

JR Hokkaido
http://www.2jr.hokkaido.co.jp/global

By Ferry

Ferry services are available to islands such as Okushiri Island in Southern Hokkaido and Rishiri and Rebun Islands in Northern Hokkaido. Prior confirmation is needed in winter, as services may be cancelled due to inclement weather.

Heart Land Ferry
http://www.heartlandferry.jp
Haboro Enkai Ferry
http://www.haboro-enkai.com

By Air

Flights are available so that you can travel long distances across Hokkaido quickly and get the most out of your trip. There are flights connecting New Chitose and Okadama Airports in Sapporo with Hakodate, Eastern Hokkaido airports such as Memanbetsu, and outlying islands. Prior bookings are required.

JAL http://www.jal.co.jp
ANA http://www.ana.co.jp/
HAC http://www.hac-air.co.jp/

By Car

If you'd like to explore Hokkaido at your own pace, a car rental is for you. Expressways are available throughout Hokkaido, with convenient roadside stations (Michinoeki) along the way where you can stop for a rest and pick up route information.

Rentacar
Nippon Rent-A-Car
http://www.nipponrentacar.co.jp/
Nissan Rent-A-Car
http://nissan-rentacar.com/
Toyota Rent-A-Car
http://rent.toyota.co.jp
Times Car Rental
http://www.timescar-rental.com
Honda Rent-A-Lease
http://www.hondarent.com/
OTS Rent-A-Car
http://otsrentacar.ne.jp/hokkaido/

By Bus

Intercity and Regular Sightseeing Buses

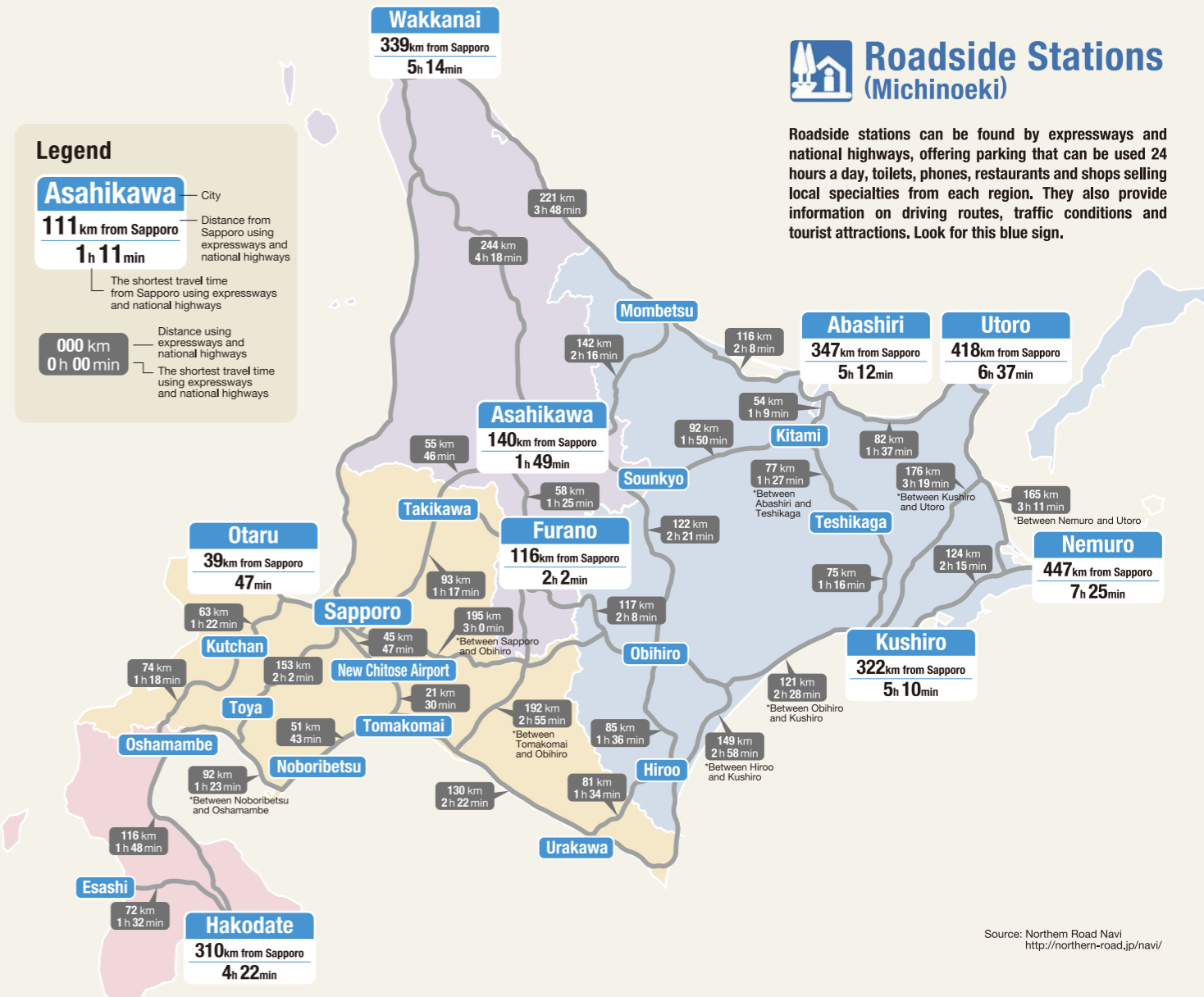
Sapporo and other major cities in Hokkaido are connected by intercity bus services. While trains are faster, bus services offer lower fares. Major tourist cities also offer regular sightseeing buses connecting a large number of tourist attractions – great for first-time visitors!

Donan Bus
http://www.donanbus.co.jp
Hokkaido Chuo Bus
http://www.chuo-bus.co.jp
Engan Bus
http://www.engan-bus.co.jp
Soya Bus
http://www.soyabus.co.jp
Hokuto Kotsu
http://www.hokto.co.jp

Dohoku Bus
http://www.dohokubus.co.jp
Furano Bus
http://www.furanobus.jp
Kushiro Bus
http://www.kushirobus.jp
JR Hokkaido Bus
http://www.jrhokkaidobus.com
Tokachi Bus
http://www.tokachibus.jp
Hokkaido Takushoku Bus
http://www.takubus.com

Hokkaido Kitami Bus
http://www.h-kitamibus.co.jp
Abashiri Bus
http://www.abashiribus.com
Akan Bus
http://www.akanbus.co.jp
Nemuro Kotsu
http://nemurokotsu.ftw.jp
Shari Bus
http://www.sharibus.co.jp

Written only in Japanese



Getting to Hokkaido

Hokkaido can be accessed from overseas with an easy stopover at
See each service provider's website for more details.

a larger Japanese airport, with some overseas airports even offering direct flights. Hokkaido can also be reached by rail from Tokyo and Osaka.



By Air

New Chitose Airport can be reached by direct flights not only from airports throughout Hokkaido and Japan, but from overseas countries such as China, Hong Kong, Korea, Taiwan, Russia and Guam. There are a large number of flights between New Chitose Airport and Haneda Airport in Tokyo, from early in the morning to late at night. Haneda Airport also offers flights to other Hokkaido airports, including Hakodate, Asahikawa, Obihiro, Kushiro and Wakkanai.

- JAL <http://www.jal.com> Tel. 0570-025-071 (domestic)
 - ANA <http://www.anaskyweb.com> Tel. 0570-029-709
 - Eva Air <http://www.evaair.com>
 - China Airlines <http://www.china-airlines.com>
 - Cathay Pacific Airways <http://www.cathayair.com>
 - HongKong Airlines <http://www.hongkongairlines.com>
 - China Eastern Airlines <http://www.ceair.com>
 - Air China <http://www.airchina.com>
 - Spring Airlines <https://en.ch.com>
 - Korean Air <http://www.koreanair.com>
 - Jin Air <http://www.jinair.com>
 - T'way <http://www.twair.com>
 - Thai Air <http://www.thairways.com>
 - Hawaiian Airlines <http://www.hawaiianairlines.com>
 - Aurora Airlines <http://www.flyaurora.ru>
 - Eastar Jet <https://www.eastarjet.com>
 - JEJU air <http://www.jejuair.net>
 - Air Busan <https://en.airbusan.com>
 - Juneyao Airlines <http://www.juneyaoair.com>
 - Hainan Airlines <https://www.hainanairlines.com>
 - Tianjin Airlines <http://www.tianjin-air.com>
 - Peach Aviation Limited <http://www.flypeach.com>
 - Air Asia <https://www.airasia.com>
 - United Airlines <https://www.united.com>
- *Please see the website below for information on departures and arrivals of domestic routes.

New Chitose Airport Terminal Building <http://www.new-chitose-airport.jp>



New Chitose Airport

By Train

After the launch of Hokkaido Shinkansen (Shin-Aomori ⇄ Shin-Hakodate-Hokuto) in March 2016, Hokkaido and Tokyo are now connected in 4 hours and 2 minutes at the fastest via Shinkansen (Hayabusa).



JR Hokkaido www2.jrhokkaido.co.jp/global

Japan Rail Pass <http://www.japanrailpass.net>

JR East-South Hokkaido Rail Pass <http://www.jreasthokkaido.com/e/>



Hokkaido Shinkansen Series H5
(Photo by HOKKAIDO RAILWAY COMPANY)

Japan Rail Pass (Upper row: Adult fare / Lower row: Child fare)

	Ordinary cars	First-class (Green) cars
7-day	¥29,110 ¥14,550	¥38,880 ¥19,440
14-day	¥46,390 ¥23,190	¥62,950 ¥31,470
21-day	¥59,350 ¥29,670	¥81,870 ¥40,930

Japan Rail Pass
<http://www.japanrailpass.net/>

An economical way to reach Hokkaido from other parts of Japan!

The Japan Rail Pass is available to foreign nationals making a short-term visit to Japan for sightseeing purposes.

The pass can be used for all railways in the JR group, all local bus routes operated by JR Bus companies and on the JR West Miyajima Ferry (Miyajima - Miyajimaguchi). Some local lines are not included.