



Online seat reservation service is available!

Contents: 1. Online seat reservation service is available! 2. Take Ltd. Exp. Suzuran From Sapporo to Noboribetsu! 3. Hot spring for beauty-Tokachigawa Onsen

1. Online seat reservation service is available!

Seat reservation for limited express trains etc. could not have been made in advance before unless you purchased a rail pass or exchanged your Exchange Order for a rail pass after arriving in Japan. In order to improve customer's convenience, online seat reservation is now available even for those who are planning to get a rail pass. This service started on February 1, 2017.

① Travelers with a rail pass (Hokkaido Rail Pass, etc.)

Reserved seat tickets can be booked from one month before your traveling date. Please reserve seats from the following website.

<https://www.eki-net.com/pc/jreast-shinkansen-reservation/English/wb/common/Menu/Menu.aspx>



※ You will be required to create a user account before making your booking.

Please have a credit card and e-mail address available to use with this account. Account registration is free of charge.

Bookings can also be made prior to purchasing your rail pass.

※ Please purchase your rail pass separately at a designated travel agency overseas or the places in Japan where passes are sold. Rail passes cannot be purchased using JR-EAST Train Reservation.

※ Reserved seat limited express ticket charges will be displayed on the reservation confirmation screen after making your reservation, even if you made a reservation under the condition that you will using a rail pass. Your credit card has not been charged at this point. It's free of charge if retrieving the reserved seat ticket by the deadline.

② Travelers without a rail pass

Reserved seat tickets can be booked from one month before your traveling date through "JR-East Train Reservation" even if you are a traveler without a rail pass.

*Basic fare ticket charge is not included in the price amount indicated on the reservation confirmation screen. You are required to purchase a basic fare ticket separately. When receiving a reserved seat ticket, please be sure to purchase the appropriate basic fare ticket.

Example: If booking a reserved seat on the Super Hokuto No. 6, the 3,110 yen amount displayed on the reservation confirmation screen only accounts for the reserved seat limited express ticket from Sapporo to Hakodate.

For riding the train, it is necessary to purchase a separate basic fare ticket for Sapporo to Hakodate for 5,720 yen. The total fare for tickets (one-way) will be 8,830 yen.

Reservations cannot be made for temporary train and sightseeing train. Information for eligible trains, receiving locations, and cancellations, please check the URL below.

<http://www2.jrhokkaido.co.jp/global/english/tr/>



Frequently Asked Questions

Q. Can I book a reserved seat before I purchase a Rail Pass?

A. Yes, you can. When a reservation is made, a reservation confirmation notice will be sent to your email address. Please check the contents of the notice. When you purchase a Rail Pass or exchange your Exchange Order for a Rail Pass after you arrive in Japan, please present the reservation number and the credit card you registered upon reservation.



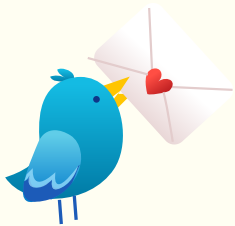
Q. I'd like to reserve a train from Asahikawa to Furano, but this section does not get displayed.

A. Local trains, sightseeing trains, and extra trains cannot be reserved through JR-EAST Train Reservation.

Local trains or sightseeing trains 'Furano Biei Norokko Trains' run between Asahikawa and Furano. There are no reserved seats on local trains. As all seats are non-reserved, they cannot be booked through JR-EAST Train Reservation. If you have a Rail Pass, you can board the train with that alone. If you do not have a Rail Pass, purchase a basic fare ticket for the section you'd like to travel.

Sightseeing trains 'Furano Biei Norokko Trains' cannot be reserved either.

※Furano Lavender Express Trains, SL Fuyu-no-Shitsugen-go Trains, the Kushiro Shitsugen Norokko Train and the Ltd. Exp. Lilac Asahiyama Zoo Train cannot be reserved either.



Q. I have booked a reserved seat from Tomamu to Minami-Chitose. Can I collect my ticket at Tomamu Station?

A. Tickets reserved through JR-EAST Train Reservation can only be picked up at JR Information Desk, JR Travel Service Centers (Twinkle Plaza), and stations specified on the JR-EAST Train Reservation site. As Tomamu Station is not one of the specified stations, tickets cannot be picked up there.

Also, Tomamu is an unstaffed station. Tickets cannot be purchased there, either.

Please purchase tickets or pick up your reserved ticket booked through JR-EAST Train Reservation before you get to Tomamu.



For more frequently asked questions, please visit our website.

<http://www2.jrhokkaido.co.jp/global/english/faq/faq07.html>



2. Take Ltd. Exp. Suzuran from Sapporo to Noboribetsu!



Noboribetsu onsen is one of the most famous hot spring resorts in Hokkaido. There are 9 kinds of spring quality, producing up to 10,000t hot spring water every day. Having various kinds of spring quality makes it a unique hot spring area. In the center of town, there are tens of traditional handcrafts shops and souvenirs shops. The street is filled with hot spring atmosphere. Taking a walk with wearing yukata after the bath is one way to enjoy the hot spring trip.



★If you want to have a day trip to Noboribetsu Onsen, the following traveling course is recommended.

📍Noboribetsu Sekisuitei Hot Springs and Lunch <http://www2.jrhokkaido.co.jp/global/english/travel/index.html>



Do you want to arrive at Noboribetsu hot spring at the check-in time to enjoy hotel facilities? For passengers who want to get to the destination comfortably and avoid those crowded Ltd. Exp. trains heading for Hakodate, it is recommended to take the Ltd. Exp. Suzuran No.6, which heads for Mutoran.

Ltd. Exp. Suzuran No. 6	Sapporo 13:55Dep.	Noboribetsu 15:09Arr.
----------------------------	----------------------	--------------------------

On the next day of the stay in Noboribetsu Onsen, for passengers who want to have lunch and go sightseeing in Sapporo but avoid crowded Ltd. Exp. trains from Hakodate, it is recommended to take the Ltd. Exp. Suzuran No. 5, which comes from Higashi-Mutoran instead.

Ltd. Exp. Suzuran No. 5	Noboribetsu 9:37Dep.	Sapporo 11:01Arr.
----------------------------	-------------------------	----------------------



3.Hot spring for beauty-Tokachigawa Onsen

Hokkaido has many popular hot springs and is called hot spring paradise. The most popular one in Obihiro and Tokachi area is Tokachigawa Onsen. It is a plant-derived moor hot spring, known as "bijin-no-yu" (hot spring for beauty) for its high skin-moisturizing effect.



How to get there



📌 Timetable for trains and buses

To Tokachigawa Onsen

	Sapporo	Obihiro		Obihiroekimae	Tokachigawa Onsen
Ltd. Exp. Super Ozora No.5	11:53Dep.	14:21Arr.	Bus	15:26Dep.	15:54Arr.
Ltd. Exp. Super Ozora No.7	14:16Dep.	16:59Arr.		18:11Dep.	18:39Arr.

To Sapporo

	Tokachigawa Onsen	Obihiroekimae		Obihiro	Sapporo
Bus	08:06Dep.	08:40Arr.	Ltd. Exp. Super Tokachi No.4	08:51Dep.	11:40Arr.
	09:55Dep.	10:29Arr.	Ltd. Exp. Super Tokachi No.6	11:10Dep.	13:56Arr.

