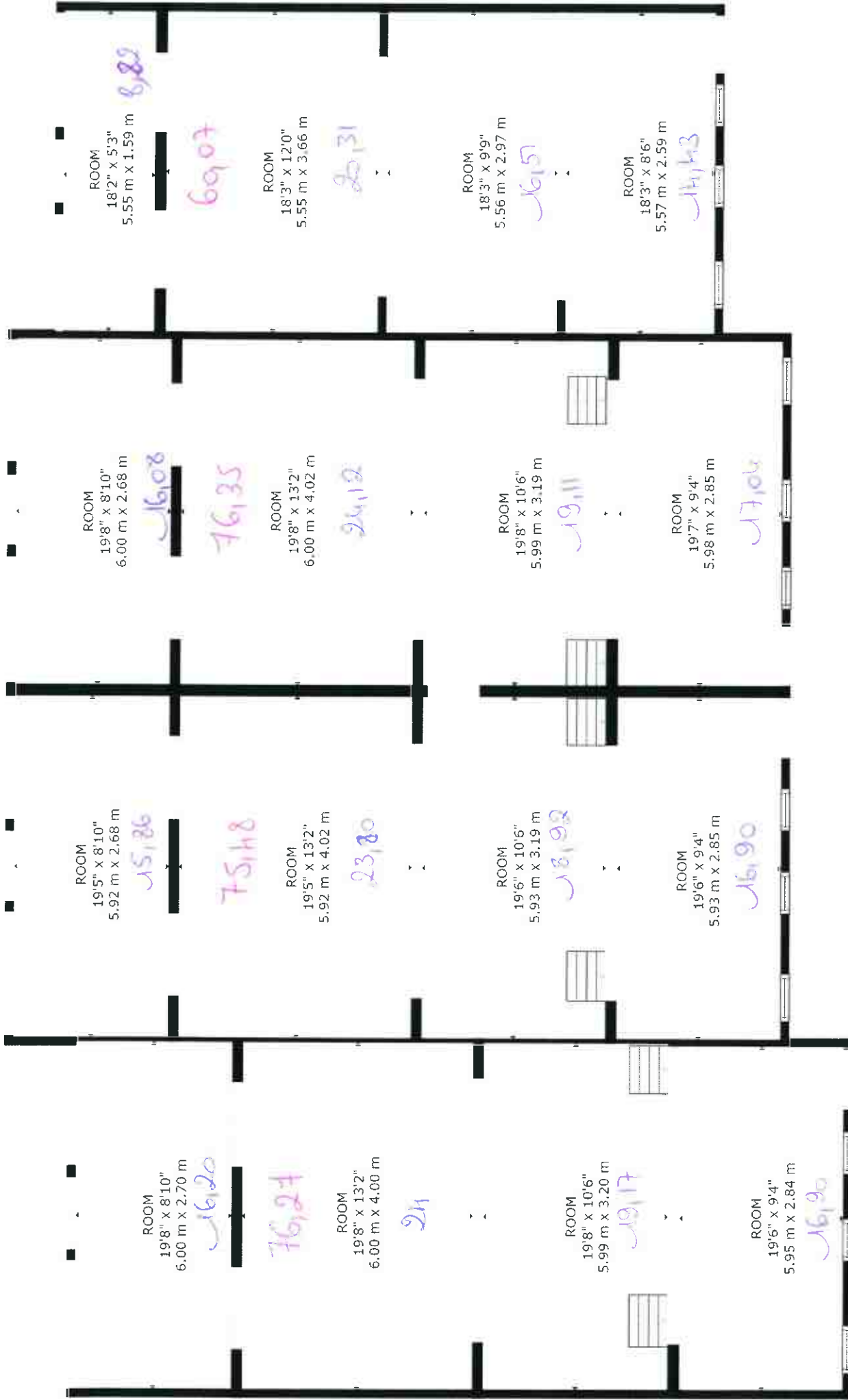


Basement 1 - 3 units base = 235,00 m²

GROSS INTERNAL AREA
 FLOOR 1: 2610 sq ft, 243 m²
 TOTAL: 2610 sq ft, 243 m²



Bahment k unit's total = 288,17

GROSS INTERNAL AREA
 FLOOR 1: 3294 sq ft, 306 m²
 TOTAL: 3294 sq ft, 306 m²



Balkon 2 - 3 unités haut = 230,87

GROSS INTERNAL AREA
FLOOR 1: 2602 sq ft, 242 m²
TOTAL: 2602 sq ft, 242 m²