

ROLEX MIDDLE SEA RACE 2019

Weather briefing

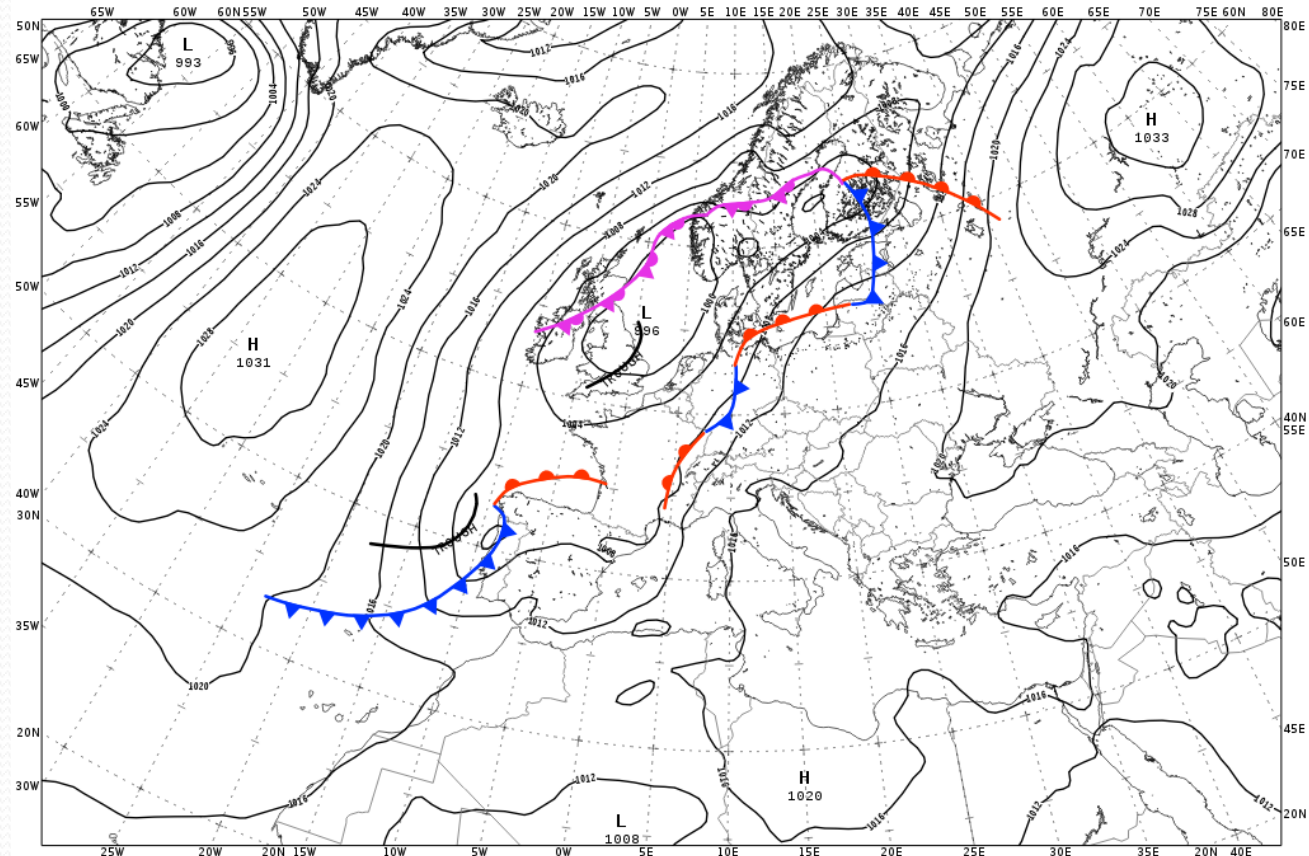
Lt. Col. Arturo CANNITO
ITAF Weather Service
Friday 18th October 2019

Surface analysis 12:00 UTC October 19th

ANALISI AL SUOLO CON FRONTI del 19 10 2019 12UTC

WEATHER SITUATION

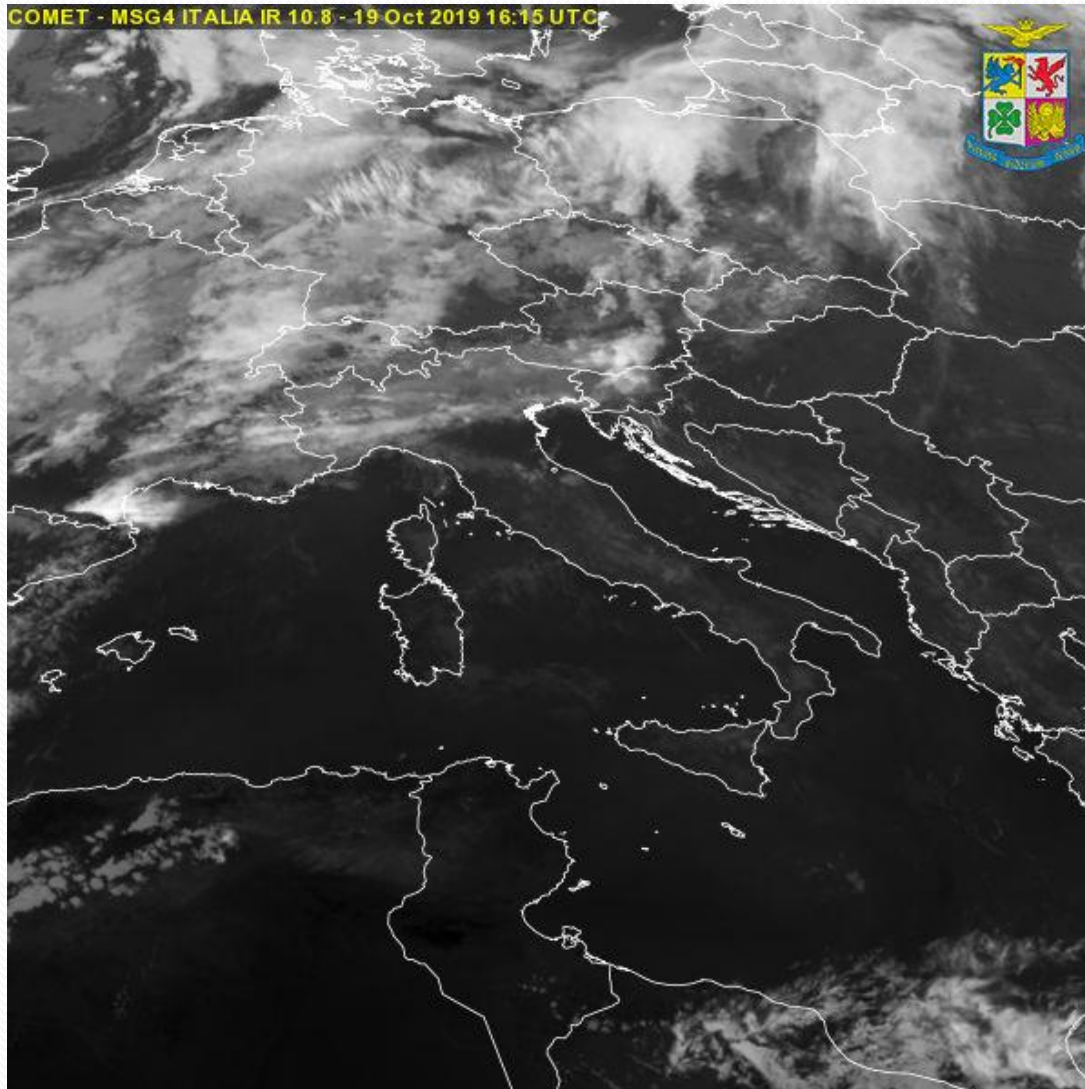
FLAT FIELD OF 1016 HPA
OVER THE WHOLE
MEDITERRANEAN SEA



GALES IN PROGRESS: NIL
EXPECTED GALES: NIL.



Satellite 19 October 16:15 UTC





Weather forecast



Weather forecast Sunday October 20th -12:00 UTC

ECMWF Forecast Time + 36h

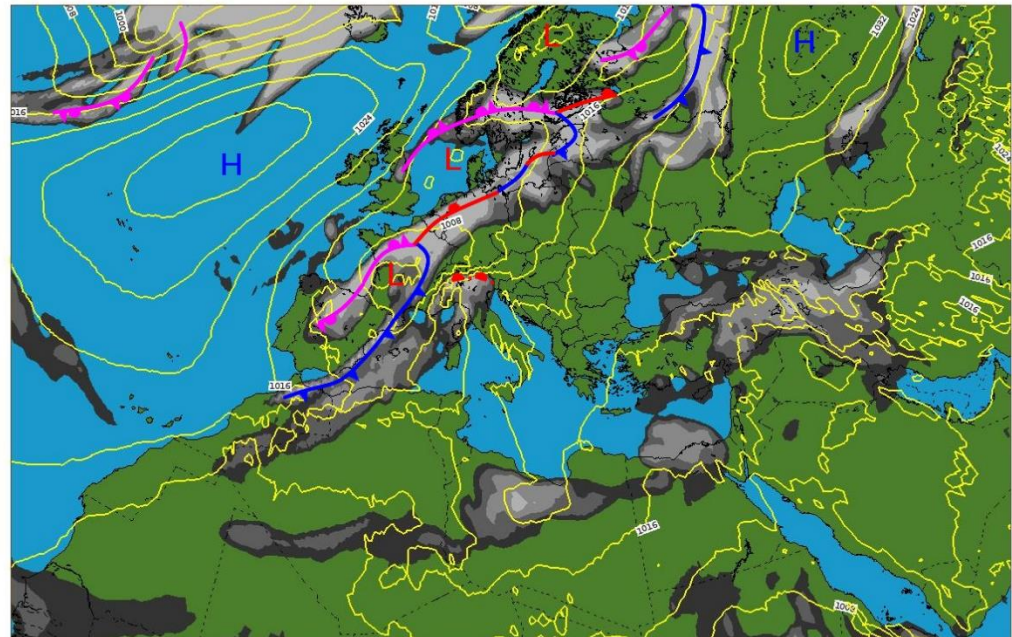
FORECAST:

Surface pressure
temporary
building up over central
Mediterranean Sea.

Presence of a large low
pressure system that is
extending
from England toward
Iberian Peninsula.
It will cause moderate
southerly wind mainly
over Sicily channel



ECMWF 19 October 2019 00UTC Forecast T+36 VT: Sunday 20 October 2019 12UTC
Umidita` relativa 700hPa (%) + MSLP (hPa)



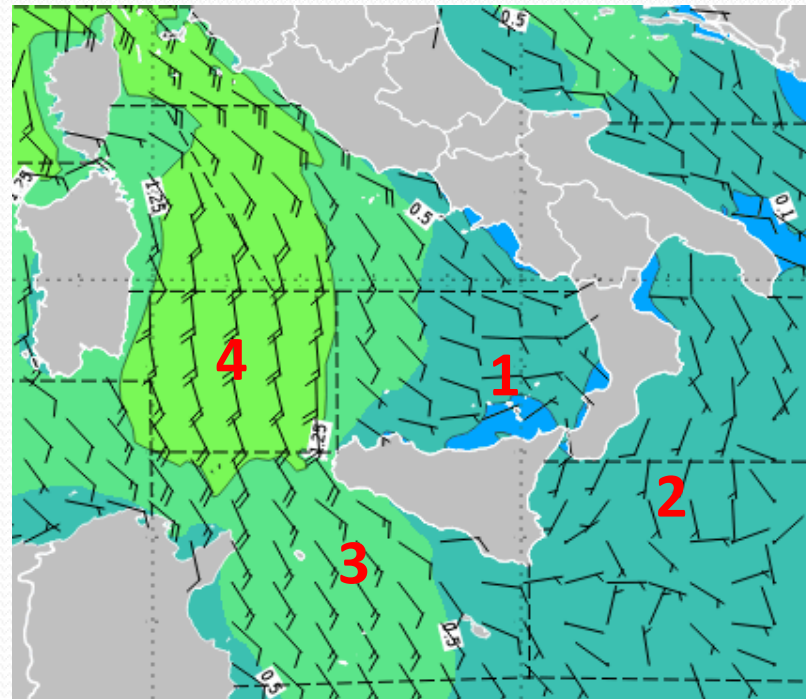
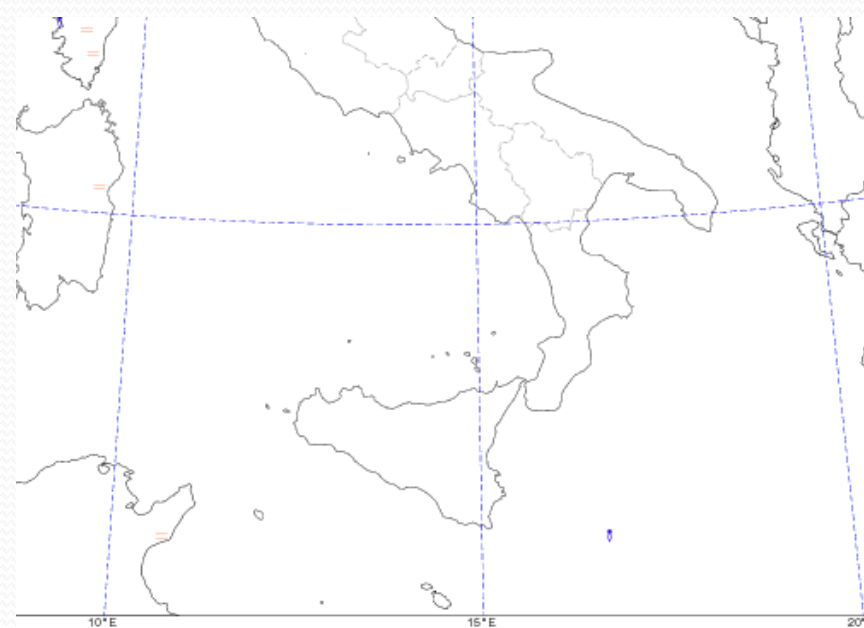
60 70 80 90 100

Mgjes+4 26.1 (64 bit) - tonak4 - smman - Sat Oct 19 06:57:43 2019

EXPECTED THUNDERSTORMS: NIL
EXPECTED GALES: NIL.

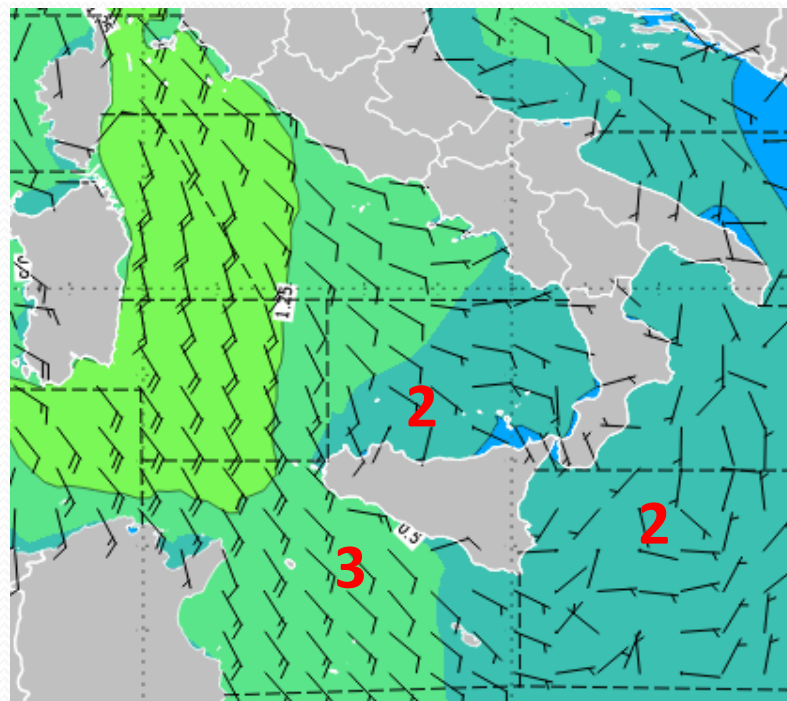
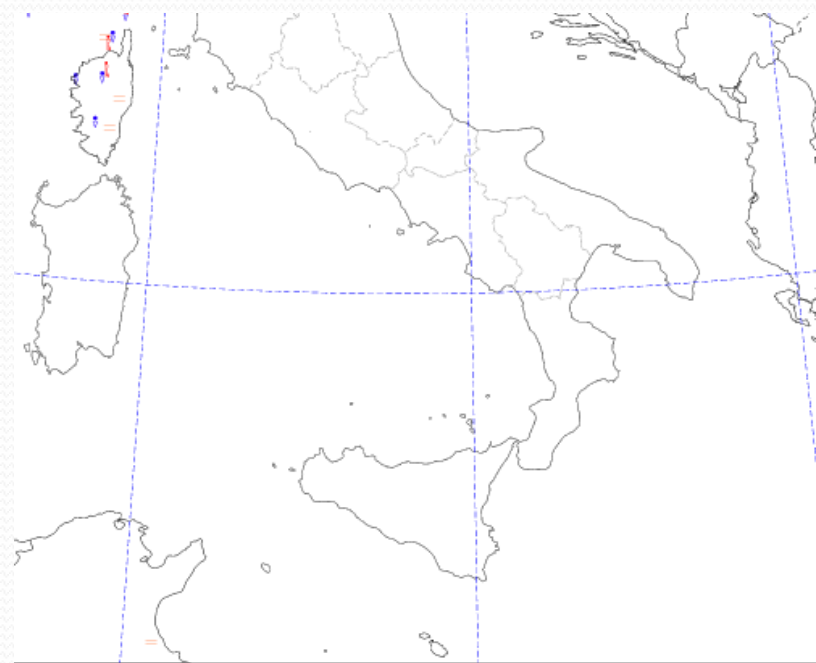
Weather forecast Sunday October 20th -12:00 UTC

Model COSMO –ME_COMET + Nettuno HR



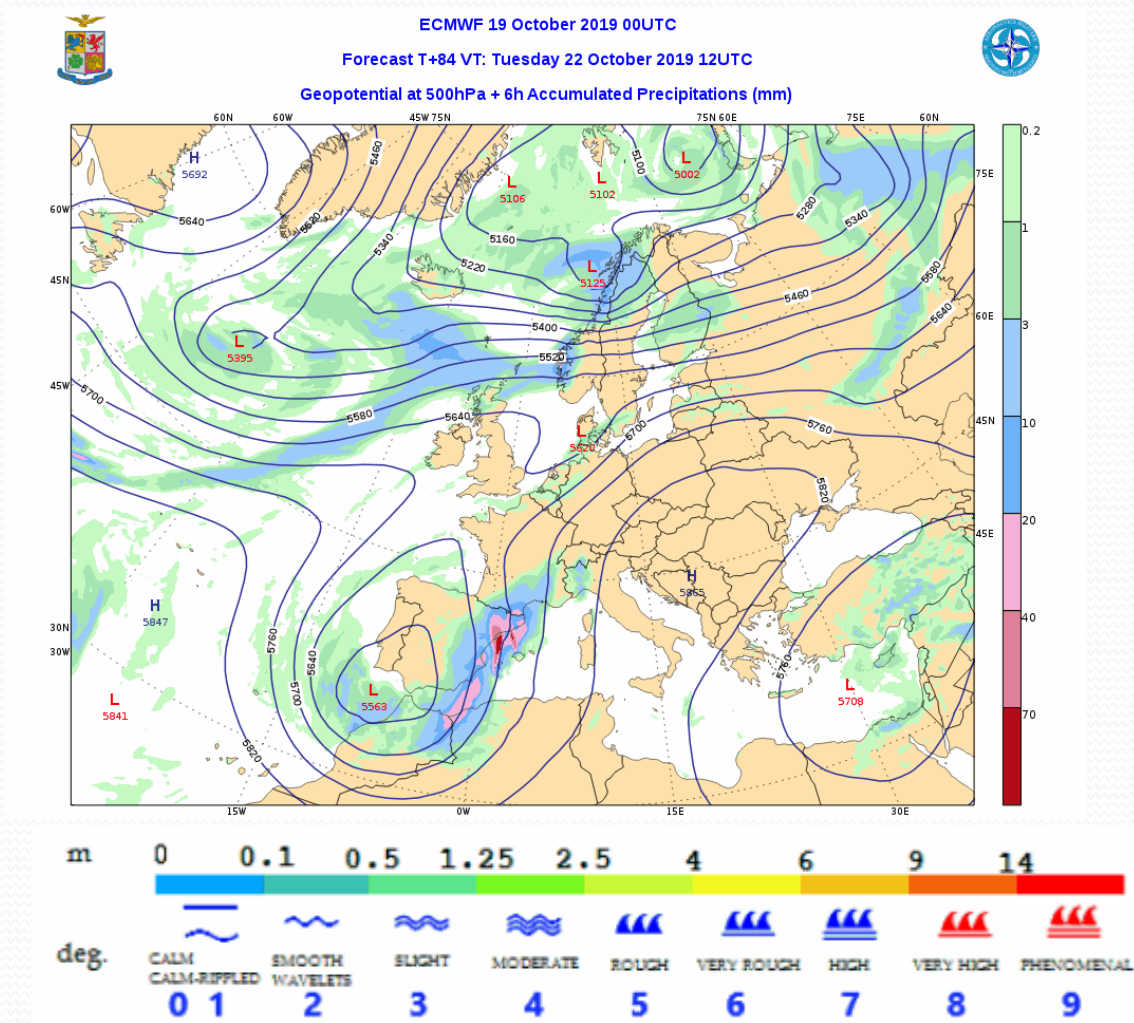
Weather forecast Monday October 21st 00:00 UTC

Models: COSMO –ME_COMET + Nettuno HR



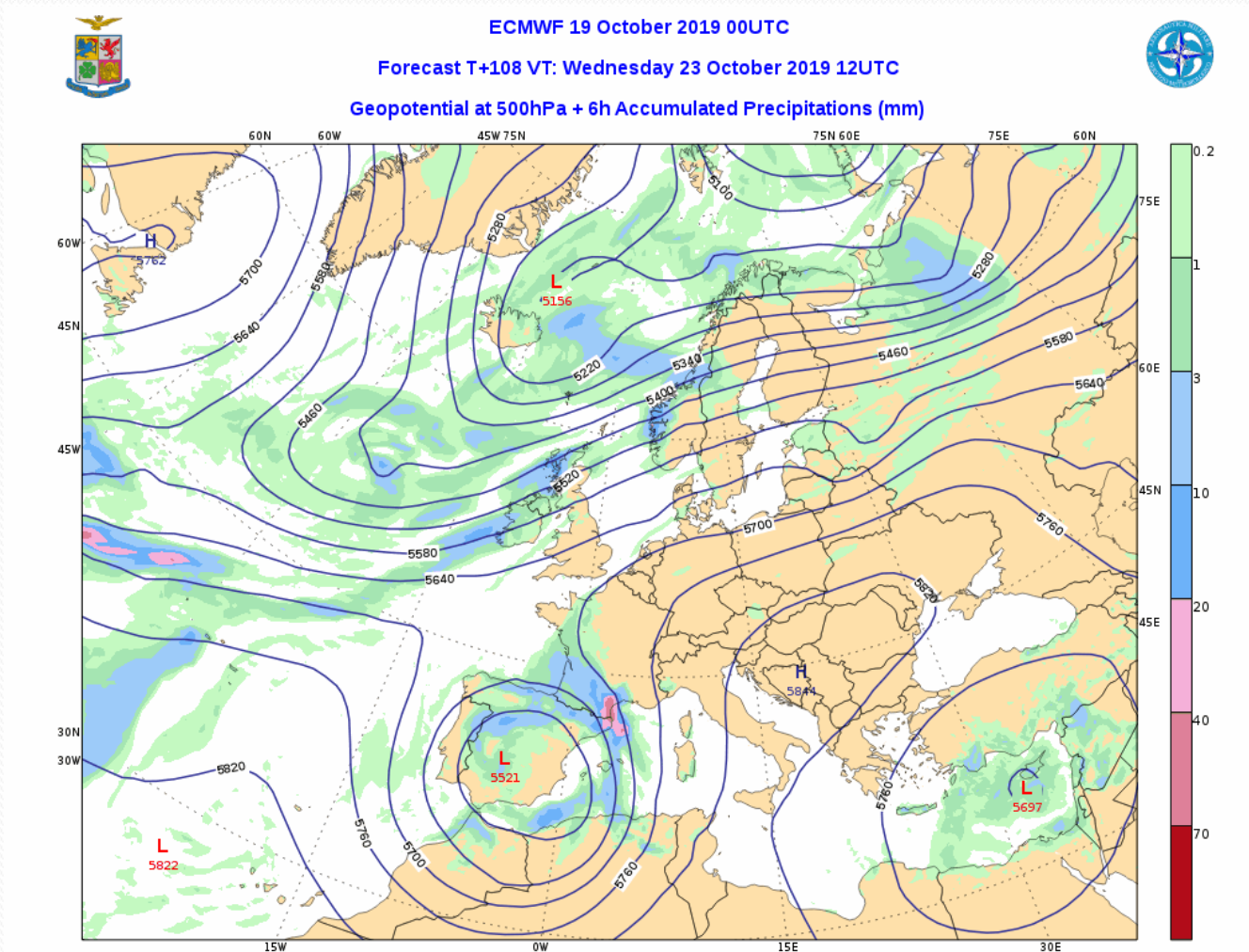
Weather forecast Tuesday October 22nd 12:00 UTC

Model: ECMWF



Weather forecast - Wednesday October 23rd 12:00 UTC

Model ECMWF



Weather forecast Thursday October 24th- 12:00 UTC

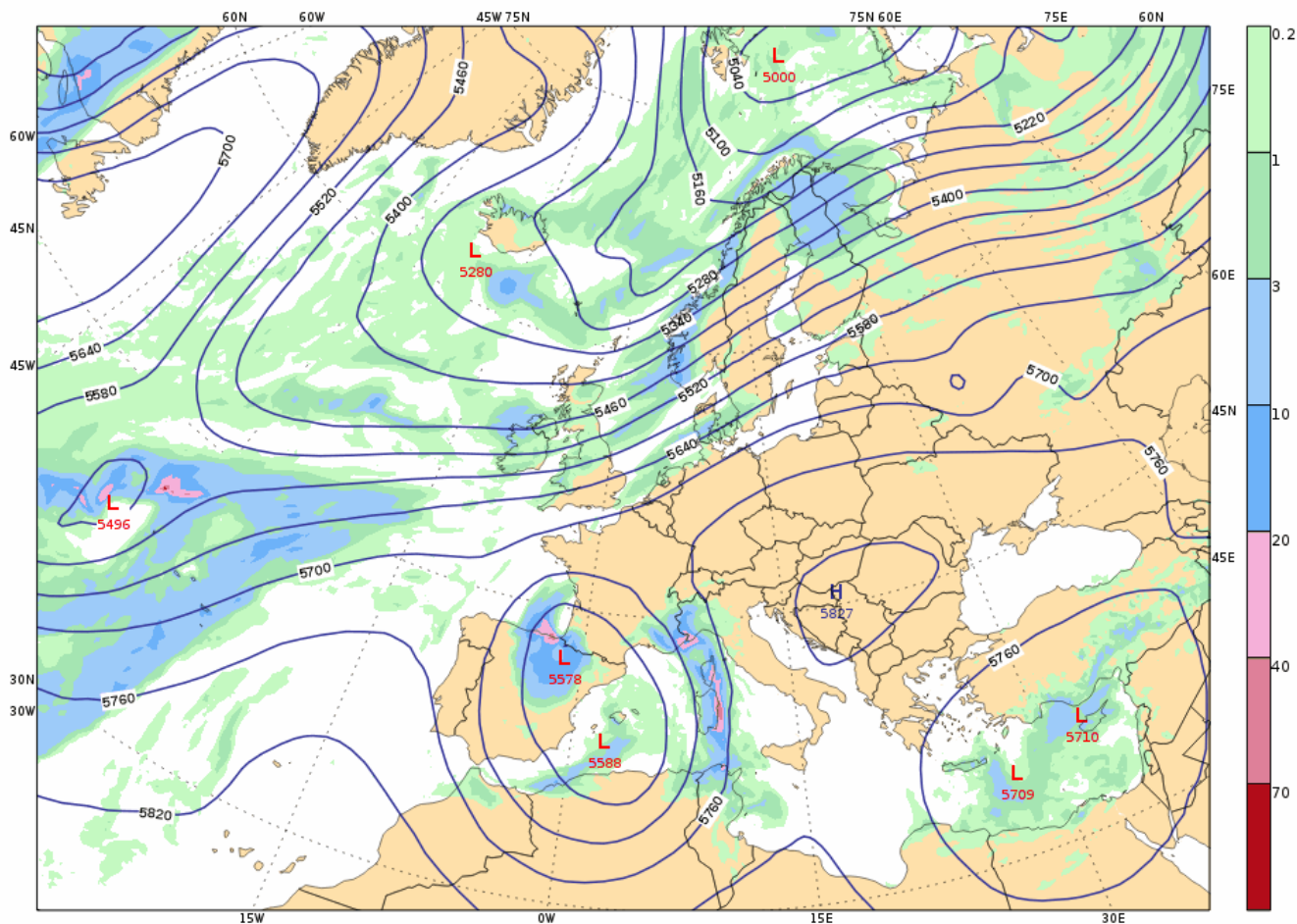
Model: ECMWF

ECMWF 19 October 2019 00UTC

Forecast T+132 VT: Thursday 24 October 2019 12UTC



Geopotential at 500hPa + 6h Accumulated Precipitations (mm)





Route forecast 12:00 UTC Sunday October 20th

Model COSMO –ME_COMET + Nettuno HR

WEATHER											
TEMPERATURE	21°C		21°C		22°C		23°C		24°C		
WAVE DIRECTION											
WAVE HEIGHT	0,2		0,2		0,2		0,2		0,2		
WIND											

MESSINA

SEA SURFACE TEMPERATURE = 22 -24 °C

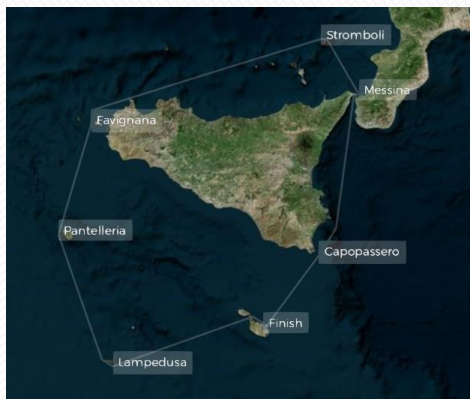
STROMBOLI

SUNRISE 05:11

SUN SET 16:17

SUNRISE 05:13

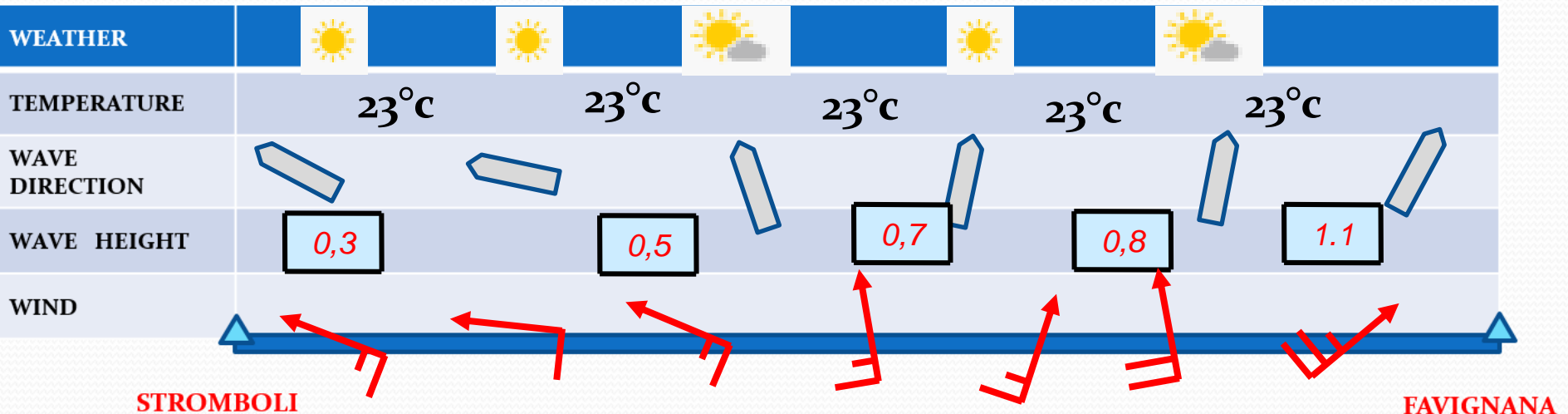
SUN SET 16:17





Route forecast 12:00 UTC Sunday October 20th

Model COSMO –ME_COMET + Nettuno HR



SEA SURFACE TEMPERATURE = 22 -23 °C

SUNRISE 05:13

SUN SET 16:17

SUNRISE 05:23

SUN SET 16:30

