

KITCHEN PRO

PRECISION WIRELESS THERMOMETER 2 PROBES

Owner's Manual



IMPORTANT

Read and follow all warnings and instructions before assembly and use.
Keep this manual for future reference.

KITCHEN PRO PRECISION WIRELESS THERMOMETER 2 PROBES

SPECIFICATIONS

Probe		Booster	
Temperature range	Internal: -10°C to 100°C/14°F to 212°F Ambient: -10°C to 300°C /14°F to 572°F	Display	26mm x 31mm
Accuracy	Internal: ±1.0°C/±1.8°F Ambient: ±3.0°C/ ±5.4°F	Battery	3.7 volt 550mAh
Dimensions	128mm x 8.3mm	Dimensions	154mm x 50mm x 25mm
Water resistance	IP67	-	
Wireless output power	10dBm	Connection	Wireless 5.3
Probe material	Food grade 304 stainless steel	Energy saving mode	Display automatically darkens after 5 minutes of no operation
Battery life	48 hours	Battery life	48 hours
Charging time	30 minutes	Charging time	1 hour
Range	The max distance for probe to the booster/charging case is 100 metres. If the BBQ lid is closed the range from the probe to the charging case is only 1 metre.	Range	The max distance for the booster/charging case to phone is 150 metres

PRODUCT FEATURES

- Built-in wireless thermometer with two temperature probes
- Wireless range extension of 100 metres from the booster
- Two second reading time
- Internal temperature probe measures -10°C to 100°C, ambient probe measures -10°C to 300°C
- USB-C rechargeable
- Runs for 48 hours off a single charge
- Easily monitor cooking via the Temprobe app

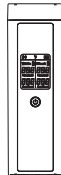
SAFETY PRECAUTIONS

1. Clean probes gently with mild soap; avoid using anything abrasive.
2. Wipe booster with a damp cloth; never submerge.
3. Insert probe beyond safety notch.
4. Avoid placing the booster near heat sources.
5. Wear protection when handling hot probes.
6. Avoid direct flame or charcoal exposure.
7. Dry thoroughly before charging.
8. Store the probes safely in the booster/charging case.
9. Handle probes carefully; keep out of children's reach.

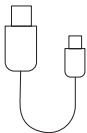
WHAT'S IN THE BOX



Temperature probes x 2



Booster unit/charging case



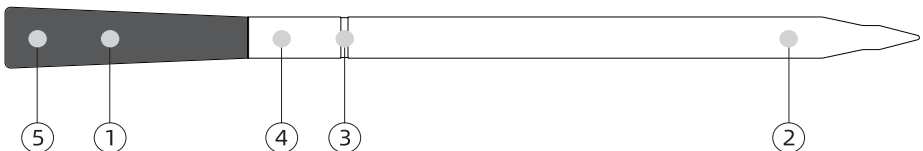
USB-C charging cable



Owner's manual

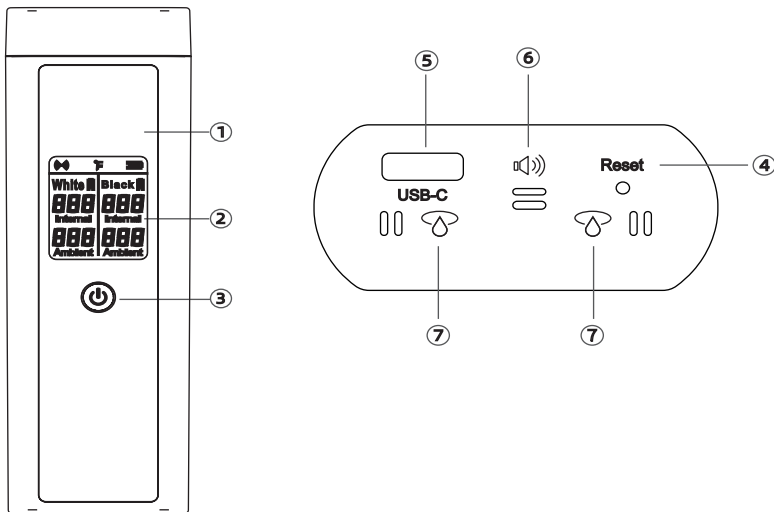
Note: Please charge the thermometer using the booster unit for one hour before first use to ensure optimal battery performance after transport.

PROBE DIAGRAM



1. Ambient temperature sensor: Located near the ceramic handle, measures temperatures from -10°C to 300°C/14°F to 572°F.
2. Internal temperature sensor: Located at the tip of the probe, measures temperatures from -10°C to 100°C/14°F to 212°F.
3. Safety notch: Ensures accurate internal temperature reading. Insert the probe past this notch.
4. Stainless steel probe: Made of food grade stainless steel.
5. High density zirconia ceramic handle: Provides comfortable and safe handling.

BOOSTER DIAGRAM



1. VA display screen: Enables clear visibility even in low light conditions.
2. Screen display: Shows battery levels and both internal and ambient temperatures.
3. Pair/silence button functions:
 - a. Hold for three seconds: Turn booster ON/OFF.
 - b. Tap three times: Pair probes.
 - c. Press once: Silence temperature alarms.
 - d. Press once: Brighten screen if dim.
4. Reset button: Reboot the booster if abnormal function occurs.
5. USB-C charging port: Requires 5V 1500mA minimum input.
6. Speaker: Alerts when preset temperatures are reached or when overheating occurs (over 100°C/212°F internal or 300°C/572°F ambient).
7. Weep hole: Protects internal components from moisture.

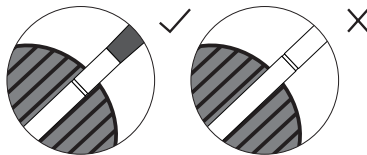
INTRODUCTION TO THE CONTROL PANEL



OPERATION INSTRUCTIONS

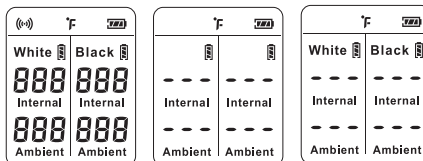
Before first use

1. Ensure full charge and review safety instructions.
2. Download the free Temprobe App from iOS App Store or Google Play.
3. Insert the probe into the meat beyond the safety notch for accurate reading

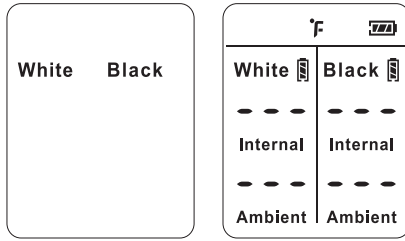


Power control

- Power on: Hold power button for three seconds. Booster activates and screen changes to active mode.



- Power off: Hold the power button for three seconds. "OFF" will display.
- Energy saving mode: Screen dims automatically after five minutes of inactivity.
- Connecting mode: Display indicates pairing process, automatically switching to active display once connected.

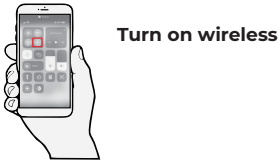


Connection settings

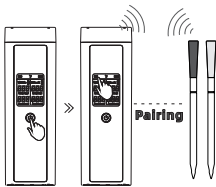
1. Download the free Tempprobe App from iOS App Store or Google Play.



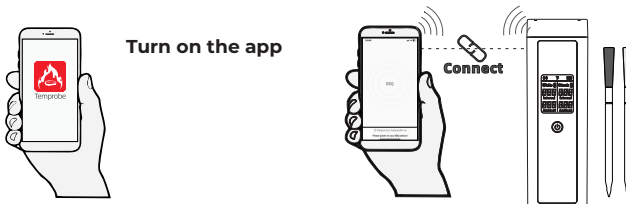
2. Activate wireless on your smartphone.



3. Pair probes to booster: Required before first setup or after replacing probes.



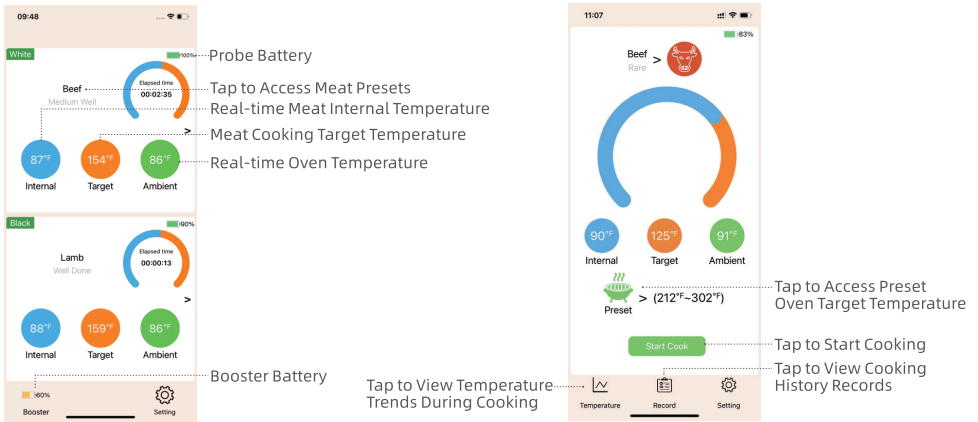
4. Open the app and connect.



5. You're ready to cook!

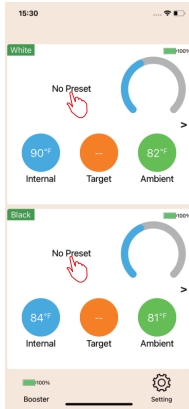
App Interface overview

- Probe battery levels
- Meat preset access
- Real-time internal and oven temperature display
- Cooking history and trends
- Cooking timer recording
- Temperature unit switching (°C/°F)



Cooking settings

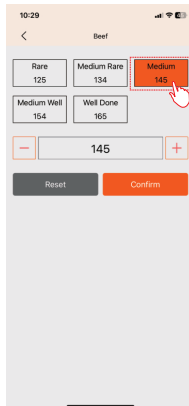
1. Select meat type.



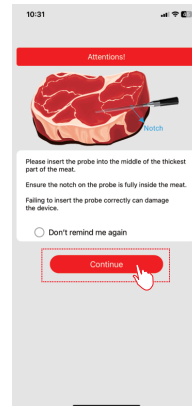
2. Enter preset options



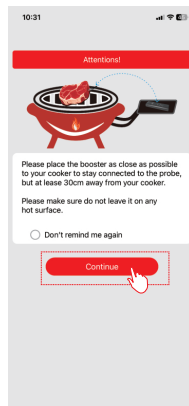
3. Confirm target temperature.



4. Insert probes properly into the meat.



5. Place the booster appropriately.



6. Start cooking and monitor via app.



TROUBLESHOOTING

Booster prompt	Possible cause	Solution
Probe battery low	Probe battery is low	Place probe into booster to recharge.
Booster battery low	Booster battery is low	Charge via USB-C cable.
Overheating	Probe exposed to extreme heat	Remove from heat and allow cooling.
Probe lost	Disconnection issue	Re-pair probe via booster re-pair function.

GET IN TOUCH WITH CUSTOMER SERVICE

If you experience any issues with your Kitchen Pro Precision Wireless Thermometer 2 Probes, get in touch with our Customer Service team by email at customerservice@kitchenwarehouse.com.au or by phone on 1800 332 934 between the hours of 9am and 7pm (AEST) Monday to Friday. Alternatively you can use the Live Chat function on our website by visiting www.kitchenwarehouse.com.au/contact-us

Warranty

Our goods come with guarantees that cannot be excluded under the Australian Consumer Law. You are entitled to a replacement or refund for a major failure and for compensation for any other reasonably foreseeable loss or damage. You are also entitled to have the goods repaired or replaced if the goods fail to be of acceptable quality and the failure does not amount to a major failure.

The benefits of this warranty are in addition to any rights and remedies imposed by Australian State and Federal legislation that cannot be excluded. Nothing in this warranty excludes, restricts or modifies any State or Federal legislation applicable to the supply of goods which cannot be so excluded, restricted or modified.

Guarantee

We warrant that, subject to the exclusions and limitations below, the Product will be free from defects in materials and workmanship under normal domestic household use for the 12 month warranty period. The warranty period commences on the date of sale by the original retailer to the original purchaser. The warranty applies only while the Product is owned by the original purchaser.

Use of the Product in a commercial capacity will void this warranty. If a defect appears in the Product before the end of the warranty period and we find the Product to be defective in materials or workmanship, we will replace the Product with a product comparable in quality and value.

We reserve the right to change or discontinue our product ranges at any time without notice and without liability.

Exclusions

This warranty does not apply if proper care and/or usage instructions are not followed. This warranty does not cover scratches, stains, discoloration or damage caused by misuse.

How to claim

If a fault/defect is identified cease using the Product immediately. To make a claim on this guarantee, take the Product, proof of purchase and

full details of the alleged defect to any Kitchen Warehouse store.

Limitations

We make no express warranties or representations other than as set out in this guarantee. The replacement of the Product or the refund of the purchase price is the absolute limit of our liability under this guarantee.

Distributed by Kitchen Warehouse.

KITCHEN PRO

Kitchen Pro is a registered trademark of Kitchen Warehouse Pty Ltd. The printed material appearing in this document and related packaging is protected by copyright.

Kitchen Warehouse Pty Ltd
1 Pensioner Guard Road
North Fremantle, WA, 6159
www.kitchenwarehouse.com.au
1800 332 934
customerservice@kitchenwarehouse.com.au