

sodastream® *Art*

**YOUR
SPARKLE.
YOUR
CREATION.**

**REGISTER NOW!
AND GET AN EXTRA
1 YEAR WARRANTY**

scan or go to:
sodastream.com/rega



NEED HELP? CALL US: **1300 763 278**

Fresh Sparkling Water

HANDMADE BY YOU

Now you can craft your own handmade sparkly drinks from the convenience of your home and help Planet Earth have less waste and more sparkle!

Your new ART Sparkling Water Maker is all about unlimited personal creation. With just a pull of a lever you can turn any H₂O into H₂Wow, and enjoy bubbly masterpieces whenever you want.

In just 3 minutes, you'll be able to experience your first sparkly drink!

CONTENTS

ALL YOU NEED FOR A FRESH START	4
GET TO KNOW YOUR ART™	5
HOW TO'S	6
CO ₂ CYLINDER QUICK CONNECT	6
SNAP-LOCK SYSTEM BOTTLE INSERT	8
THE ART OF FIZZING	10
USER INSTRUCTIONS	12
USER LICENSE	12
SETUP	13
CARE	14
FOR YOUR SAFETY	15
LIMITED WARRANTY	16



For your safety, please read the set up and safety instructions on pages 15 and 17 before using the Sparkling Water Maker. Save these instructions and provide them to any subsequent users.

For more details and information regarding our Sparkling Water Makers, including how to use and troubleshooting guide, please go to the support site: sodastream.com.au

ALL YOU NEED FOR A HANDMADE SPARKLY DRINK



soda**stream** ART™
SPARKLING
WATER MAKER



1 LITRE
CARBONATING
BOTTLE + CAP



soda**stream**
QUICK CONNECT
CO₂ CYLINDER*

—
Patent Pending Technology

*60L SodaStream® CO₂ Cylinder (under license) makes up to 60L of sparkling water depending on the level of carbonation and type of Sparkling Water Maker

GET TO KNOW YOUR ART™



COMPATIBLE WITH THE FOLLOWING ONLY:

SodaStream reusable
Carbonating Bottles*



1L



0.5L



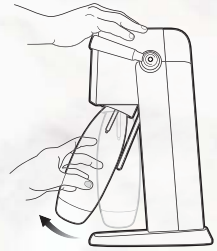
1L

SodaStream Quick Connect
CO2 Cylinder



*Check for compatibility on the Bottle pack.

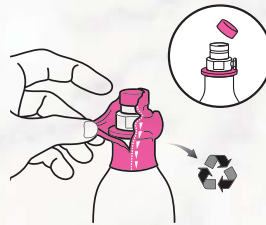
QUICK CONNECT CO₂ CYLINDER



**FOR A SIMPLE
SET UP VIDEO -
SCAN AND WATCH**



**Pull out the
carbonating bottle
before inserting the
CO₂ cylinder**



1

**Remove the plastic
cover and pull off
the cap**

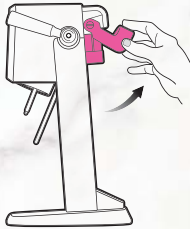
2

**Pull open the
back cover**



**Please carefully read the full SET UP instructions
and safety warnings on p.15 and p.17**

*Make sure the carbonation bottle is not connected to the
Sparkling Water Maker before inserting the cylinder.

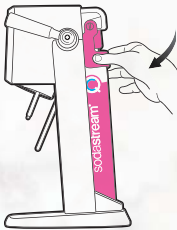


3 Raise the pink handle



Bottom first

4 Insert the cylinder, bottom first*



5 Lower the handle to lock



6 Replace the back cover

STUFF TO KNOW



Remember - your cylinder is reusable, when it runs out of CO₂, simply bring it back and get it exchanged.

PAID ONLY FOR THE CO₂ REFILL!

Get an extra cylinder so you never run out of bubbles!



Make sure to exchange with the right CO₂ cylinder for your Sparkling Water Maker.



✓
compatible
with your
sodaStream
ART™

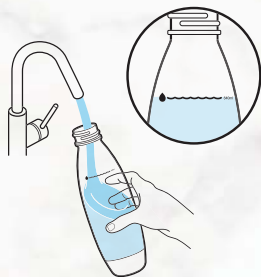


✗
not
compatible

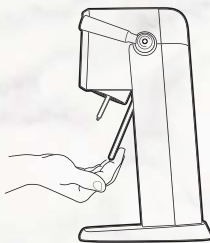
SNAP-LOCK
SYSTEM
**BOTTLE
INSERT**



**PREFER
A HOW-TO
VIDEO?**
Simply scan:



- 1** Fill the carbonating bottle with cold water up to the fill line
- !** Always fizz water before adding any flavour

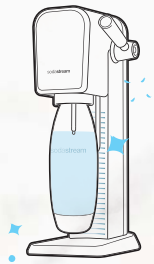


- 2** Make sure the bottle rest is tilted out



3 Insert bottle neck into the snap-lock. Push it **up** and then **back**.

! Bottle is inserted correctly when there's a gap between the bottle and the base



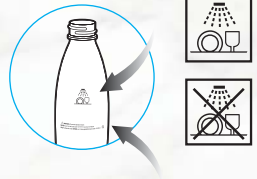
EXCELLENT!

Now the last bubbly step

STUFF TO KNOW



To check if your bottle is dishwasher safe or not, look for one of these icons:



The bottle's expiration date is here



DID YOU KNOW?

1 sodastream can save thousands of single use plastic bottles*



*Based on GlobalData Plc Global Volume Packaging Database for years 2017-2020

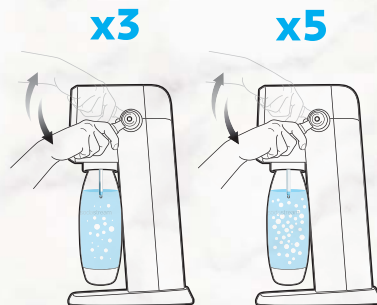
THE ART OF FIZZING



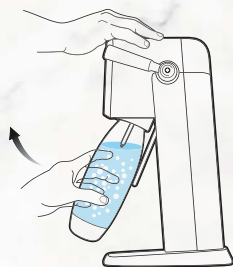
**PREFER
A HOW-TO
VIDEO?**
Simply scan:



- 1** **FIRMLY PUSH** the carbonating lever all the way down, **HOLD** for **1 SECOND**, and **RELEASE**



- 2** Repeat as desired:
3 times for standard fizz
5 times for strong fizz



3 Pull the bottle towards you



REGISTER NOW
For an
extra 1 year
warranty



TADA!

YOUR CREATION IS READY

Having bubble trouble?

1300 763 278

STUFF TO KNOW



PRO'S TIP:

Cold water fizzes better. Keep an extra bottle in the fridge, so you always have one ready to sparkle!



Want some flavour with your fizz?

Try our range of flavours at:

SODASTREAM.COM.AU



USER LICENSE

**FOR ONE SODASTREAM QUICK CONNECT CYLINDER
NOT FOR SALE
PROPERTY OF SODA-CLUB (CO2) GMBH OR ITS AFFILIATES
PROVIDED UNDER LICENSE AND PATENT PENDING**

This is a legally binding document between Soda-Club (CO2) GmbH or its affiliates ("SodaStream") and the consumer regarding the right to use a SodaStream CO₂ Quick Connect Cylinder (the "Cylinder").

The Cylinder is proprietary to SodaStream, patent pending and protected by other intellectual property rights. Further, to protect users' safety and health, various directives and regulations govern and regulate the use, refilling, maintenance, retesting and repair of the Cylinder. SodaStream possesses the legally required knowledge and expertise to be responsible for strict legal compliance that can only be guaranteed if the Cylinder is maintained, examined, retested and refilled by it. Thus, the Cylinder remains the property of SodaStream and is provided under License.

1. When empty, please return the Cylinder to either SodaStream or an authorised SodaStream distributor in exchange for a full Cylinder, for the price of the gas refill only. This License will continue to bind the use of each subsequent Cylinder.
2. Refilling an empty Cylinder by third parties may infringe SodaStream's intellectual property rights, including patents and other proprietary rights, may be risky and may violate certain laws. SodaStream only warrants the safety of Cylinders refilled by it, bearing a SodaStream tamper proof valve seal. You may not remove or change any proprietary notice appearing on or accompanying the Cylinders.
3. If you return the Cylinder to SodaStream or an authorised SodaStream distributor, in good condition, without exchanging it for a full one, you will be entitled to a return fee of \$2 or local equivalent.
4. The Cylinder, together with this User License, may be transferred to a third party provided the third party agrees to be bound by the conditions and ownership rights expressed herein. Possession of this User License proves the right of its holder to use one Cylinder under the terms herein.

The laws of Switzerland govern this License.

For questions, please contact SodaStream International BV, Dongenseweg 200, 5047 SH Tilburg, NL.

SET UP

INSTALLING THE CO₂ QUICK CONNECT CYLINDER

1. Place the SodaStream® Art™ Sparkling Water Maker on a flat sturdy surface and remove the back cover.

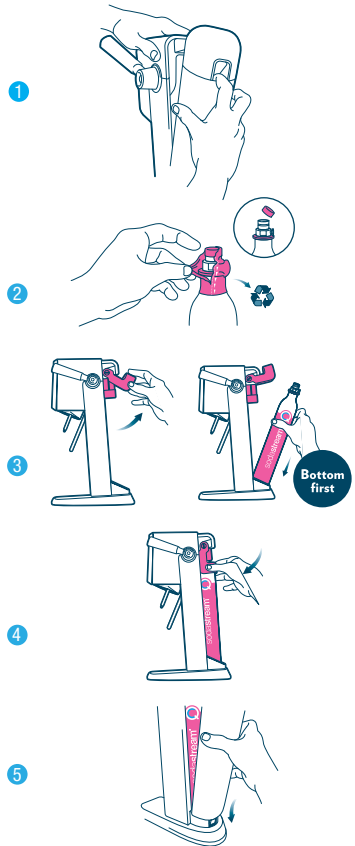
2. Remove seal and cap from the SodaStream CO₂ Quick Connect Cylinder.

WARNING! Never insert or replace the CO₂ Quick Connect Cylinder while a Carbonating Bottle is installed in the Sparkling Water Maker. This can cause the Carbonating Bottle to be ejected or burst.

3. Raise cylinder Pink Handle. Insert the CO₂ Quick Connect Cylinder in the back of the Sparkling Water Maker.

4. Lower cylinder Pink Handle.

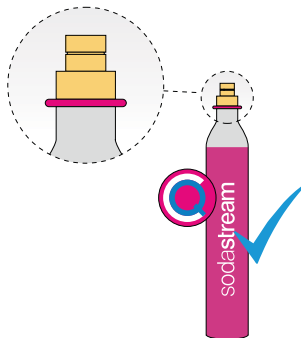
5. Reinstall the back cover. Now you are ready to create the bubbles.



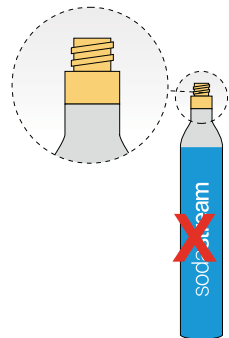
SODASTREAM® CO₂ QUICK CONNECT CYLINDER

COMPATIBLE SODASTREAM®
CO₂ QUICK CONNECT CYLINDER

Please note that the SodaStream® Art™ is only compatible with the CO₂ Quick Connect Cylinder and is **NOT** compatible with the SodaStream® CO₂ Screw System Cylinder or other cylinders.

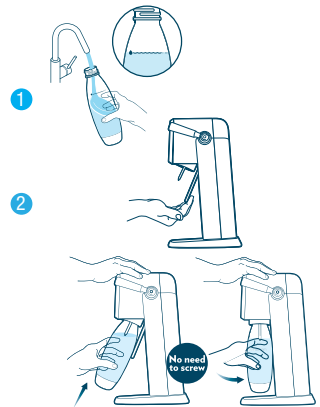


NON-COMPATIBLE
CO₂ SCREW SYSTEM CYLINDER

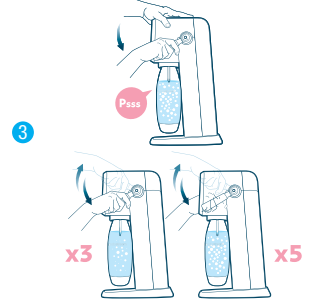


CREATE THE BUBBLES

1. Fill the Carbonating Bottle with cold water up to the fill line. **WARNING! Do not carbonate anything other than water. Other liquids can contaminate and clog internal parts, potentially resulting in excessive pressure, bottle failure during carbonation and serious injury. Never carbonate after flavouring has been added.**
2. To insert the Carbonating Bottle, make sure that the Carbonating Bottle rest is angled forward. Please make sure you do not pull the carbonating tube. **WARNING! Never use a Sparkling Water Maker with a broken carbonating tube.** This can cause excessive pressure, bottle failure and serious injury. Insert the Carbonating Bottle neck into the Snap-Lock. Push the Carbonating Bottle up and back. The Snap-Lock will hold the Carbonating Bottle.
3. To carbonate, push down on the carbonating lever in short 1 second presses; 3 presses for standard carbonation and 5 presses for high.
4. When the desired level of carbonation is achieved, gently pull the Carbonating Bottle towards you until it reaches its fully forward position. This will release the pressure in the Carbonating Bottle and allow the Carbonating Bottle to be released from the Snap-Lock. **WARNING! Do not remove Carbonating Bottle until after hearing the sound of excess CO₂ being released.** Never force the Carbonating Bottle out of the Snap-Lock. Always allow the Sparkling Water Maker to release the Carbonating Bottle. If the Carbonating Bottle does not immediately release from the Snap-Lock wait a few moments. If it still does not release, then push the Carbonating Bottle back into the vertical position and gently pull it towards you again. **Attempting to remove the Carbonating Bottle while it is still pressurised can cause uncontrolled ejection of the Carbonating Bottle and may result in serious injury.**



Note: when inserted correctly, there is a small gap between the bottom of the Carbonating Bottle and the base. Do not carbonate if the Carbonating Bottle is resting on the base, or water will splash out.



Note: You may see small pieces of ice appear in the water during carbonation of very cold water. Any ice created will simply melt.



CARE

SPARKLING WATER MAKER CARE

- Never use abrasive cleaners or sharp tools to clean. If needed, use a mild liquid dish soap and a soft damp cloth to gently clean.
- Wipe spills to keep base dry.
- Do not place in water or wash in a dishwasher, doing so will seriously damage your Sparkling Water Maker.

CARBONATING BOTTLE CARE

- For Carbonating Bottles which are not "dishwasher safe", to clean, rinse Carbonating Bottles with cold or lukewarm water. **WARNING! Do not expose to heat above 50°C. Never wash or rinse in hot water.**
- **Do not wash in dishwasher.**
- For "dishwasher safe" Carbonating Bottles, to clean, either wash in dishwasher or rinse Carbonating Bottles with cold or lukewarm water. **WARNING! Do not expose to heat above 70°C.**

FOR YOUR SAFETY

SAVE THESE INSTRUCTIONS AND PROVIDE THEM TO ANY SUBSEQUENT USERS.

WARNING! Before using the Sparkling Water Maker, to reduce risk of personal injury and damage to your product, please read this important safety information.

Before allowing anyone to use your Sparkling Water Maker, please be sure they understand how to do so safely. Any servicing or repair should be performed by a SodaStream-authorized service representative. The Sparkling Water Maker is only intended for use by people over the age of 12. People with reduced physical or mental capabilities should only use the product if they are supervised by an adult responsible for their safety and after they have been given instruction concerning the safe use of the product.

TO REDUCE THE RISK OF EITHER SERIOUS INJURY OR DAMAGE TO THE SPARKLING WATER MAKER DURING CARBONATION:

- Only use your Sparkling Water Maker in its upright position, on a flat, stable surface.
- Do not place your Sparkling Water Maker on a hot surface (e.g. kitchen oven/stove) and never use it close to a flame or leave in direct sunlight.
- Carbonate water only.
- Do not add flavour before carbonation. Other liquids (except water) can contaminate and clog internal parts, potentially resulting in excessive pressure and bottle failure during carbonation.
- Do not use the machine if the carbonating tube is broken or missing.
- Check that your Carbonating Bottle is properly connected before carbonating.
- Do not move your Sparkling Water Maker or remove the Carbonating Bottle during carbonation.
- Do not carbonate an empty Carbonating Bottle.

CARBON DIOXIDE CO₂ CYLINDER

To reduce the risk of a CO₂ leak, personal injury and property damage:

- Do not use any cylinder other than the SodaStream CO₂ Quick Connect Cylinder compatible with the Art™ Pink Handle System.
- Do not insert a CO₂ Cylinder into the Sparkling Water Maker when a Carbonating Bottle is installed.
- Do not use if damaged. Inspect the CO₂ Cylinder and CO₂ Cylinder valve prior to use for dents, punctures, or other damage. If damaged, contact a SodaStream-authorized service representative.
- Do not tamper with the CO₂ Cylinder in any way, including puncturing, incinerating or removing the valve.
- Do not expose the CO₂ Cylinder to heat above 50°C. Protect from sunlight. Store in a well-ventilated area.
- Do not remove a CO₂ Cylinder from the Sparkling Water Maker when it is being operated.
- Do not handle or remove a CO₂ Cylinder while it is discharging CO₂.
- In the event of a CO₂ leak, ventilate the area, breathe fresh air and if feeling unwell seek immediate medical attention.

CARBONATING BOTTLE

To reduce the risk of bottle failure which can result in personal injury and property damage:

- For Carbonating Bottles not marked as "dishwasher safe", do not expose to heat above 50°C. Never wash or rinse in hot water. Do not wash in dishwasher.
- For "dishwasher safe" Carbonating Bottles, do not expose to heat above 70°C.
- Do not place the Carbonating Bottle next to a heat source such as your kitchen oven/stove.
- Do not leave the Carbonating Bottle in your car.
- Do not place the Carbonating Bottle in the freezer or in extreme cold below 1°C.
- Do not use the Carbonating Bottle if damaged, deformed, changes in shape, scratched, worn, or discoloured.
- Do not use a Carbonating Bottle after its expiration date.
- Only carbonate with Carbonating Bottles specifically designed to work with this Sparkling Water Maker, as shown on page 4.

SODASTREAM LIMITED WARRANTY

SODASTREAM SPARKLING WATER MAKERS

Great care has been taken to ensure that your Sparkling Water Maker was delivered to you in good condition. SodaStream warrants, subject to the terms and conditions set forth in this limited warranty, that your Sparkling Water Maker will be free of defects in materials and workmanship under normal home use for 2 (two) years following the date of purchase. It is recommended that you register your Sparkling Water Maker online by visiting www.sodastream.com.au and completing the product registration form available on the website.

If your Sparkling Water Maker malfunctions within the warranty period, and we determine the problem is due to faulty workmanship or materials, SodaStream will repair or replace it free of charge at SodaStream's discretion within the limitations set out in this warranty. SodaStream may replace your Sparkling Water Maker with a reconditioned Sparkling Water Maker, or an equivalent one if the model you purchased is no longer available. No refunds shall be given. This limited warranty is available to consumers who purchased the Sparkling Water Maker for personal, family or household use.

This warranty DOES NOT cover damages to Sparkling Water Maker resulting from:

- Abuse, misuse, alteration of the Sparkling Water Maker, or commercial use.
- carbonating liquids other than water.
- Normal wear and tear (e.g. discolouration).
- Product malfunctions that were a result, in whole or in part, by alteration, disassembly, or repair of the Sparkling Water Maker by a servicer other than an authorised SodaStream Service Centre.
- The use of CO₂ Cylinders or carbonating bottles other than those approved by SodaStream for use with your Sparkling Water Maker.
- The use of the Sparkling Water Maker with an adapter connected to the Cylinder valve or to the Sparkling Water Maker.
- The use of an expired Carbonating Bottle.
- Accident, shipment or anything other than normal household use.

This warranty DOES NOT cover the Carbonating Bottles and CO₂ Cylinders.

SodaStream is not liable for incidental or consequential damages. The consumer's sole and exclusive remedy shall be repair or replacement according to the terms and conditions of this warranty. Some local laws do not allow the exclusion or limitation of these damages, so these exclusions may not apply to you. To the extent that this warranty is inconsistent with local law, this warranty shall be deemed modified to be consistent with such local law.

You may also have other rights, which vary in accordance with local laws. The benefits given to the consumer by this warranty are in addition to other rights and remedies that may be afforded to the consumer by law in relation to this Sparkling Water Maker.

TO OBTAIN WARRANTY SERVICE FOR YOUR SPARKLING WATER MAKER

If your Sparkling Water Maker is in need of warranty service, please contact SodaStream Customer Service by visiting www.sodastream.com.au. A SodaStream representative will give you specific instructions on how to arrange for the shipment of your Sparkling Water Maker, at your expense, to one of our authorised service centres. Only SodaStream, or its agents, are authorised to provide warranty repairs or service to your Sparkling Water Maker.

SODASTREAM WARRANTY - ADDITIONAL INFORMATION

Our Sparkling Water Maker comes with guarantees that cannot be excluded under the Australian Consumer Law. Australian residence are entitled to a replacement or refund for a major failure and compensation for any other reasonably foreseeable loss or damage. Australian residence are also entitled to have the Sparkling Water Maker repaired or replaced if it fails to be of acceptable quality and the failure does not amount to a major failure. The issuer of this warranty is SodaStream Australia Pty Ltd., 21 Henderson Road, Knoxfield, Victoria 3180, Australia, Telephone No.: 1300 763 278, email: sales-australia@sodastream.com Should the Sparkling Water Maker suffer a major failure or other reasonably foreseeable damage, contact us at the above phone number, email or mailing address to present your claim for the warranty. If Australian residence are returning the Sparkling Water Maker in accordance with their rights under the Australian Consumer Law: (a) the Sparkling Water Maker does not need to be in its original packaging to be returned, however you must ensure that the Sparkling Water Maker is adequately protected for transit; and (b) Australian residence will be required to pay any delivery costs when returning items to us, however SodaStream Australia Pty Ltd., will refund reasonable delivery costs if they are entitled to a remedy under the Australian Consumer Law (subject to you providing proof of these costs). The benefits to the Australian consumer given by this warranty are in addition to other rights and remedies that may be afforded to the Australian consumer by law in relation the Sparkling Water Maker.

NON-WARRANTY SERVICE

If SodaStream or its authorised agents determine that the malfunction or damage to your Sparkling Water Maker is not covered by the warranty, SodaStream will repair the Sparkling Water Maker only upon payment of the determined repair charge.

SODASTREAM CO₂ QUICK CONNECT CYLINDERS

Your Sparkling Water Maker has been designed to operate with a SodaStream CO₂ Quick Connect Cylinder. The use of other CO₂ Cylinders is not recommended as they may not be compatible with a SodaStream Sparkling Water Maker. Damages resulting from the use of a cylinder other than a the SodaStream CO₂ Quick Connect Cylinder or use of the SodaStream CO₂ Quick Connect Cylinder not in accordance with the instructions included in this User Guide are not covered by the warranty.

The SodaStream CO₂ Quick Connect Cylinder is provided to you under license. The license allows you to exchange your empty Cylinder for a full one for the price of the CO₂ only.

SODASTREAM CARBONATING BOTTLES

Your Sparkling Water Maker has been designed to operate with a compatible SodaStream Carbonating Bottle. Damages resulting from the use of a carbonating bottle other than a compatible SodaStream Carbonating Bottle or use of Carbonating Bottles not in accordance with the instructions included in this User Guide are not covered by the warranty. SodaStream Carbonating Bottles are available from authorised SodaStream retailers.

TERMS AND CONDITIONS

Any and all claims, complaints, demands for judgment or legal actions brought hereunder relating in any way to your Sparkling Water Maker, Carbonating Bottle or CO₂ Quick Connect Cylinder shall be governed by, and construed in accordance with, the laws of the State in which the SodaStream Sparkling Water Maker was purchased and will be subject to binding arbitration as set out under the heading "Dispute Resolution by Binding Arbitration".

PRODUCT DISPOSAL INSTRUCTIONS

Please recycle your expired and damaged Carbonating Bottles in accordance with local recycling laws. The packaging in which SodaStream products are supplied is made of recyclable materials. Contact your local authority for further information on recycling.

MACHINE RATING INFORMATION

Maximum Working Pressure: 116 psi/8 bar

Maximum Allowed Operating Temperature: 104°F/40°C

Minimum Allowed Operating Temperature: 41 F/ 5 C

SodaStream is a registered trademark of Soda-Club (CO2) GmbH or its affiliates.

IF THE BOTTLE HAS WARNING ICONS, SEE MEANING BELOW:



Read the manual



Bottle failure may result in personal injury



Never expose to temperatures above 50°C / 120°F or below 1°C / 34°F



Carbonate water only



Never wash in dishwasher



Never use if damaged or deformed



Never use after expiry date

FOR DISHWASHER-SAFE BOTTLES



Never expose to temperatures above 70°C / 158°F or below 1°C / 34°F



Dishwasher safe

CRAFT YOUR OWN

Blushing Lemonade

SPARKLY MOCKTAIL

INGREDIENTS

- ◆ 200ml / 7oz. lavender syrup
- ◆ 200ml / 7oz. fresh lemon juice
- ◆ 600ml / 20oz. SodaStream sparkling water

PREPARATION

Pour all the ingredients into a pitcher and serve.

For the lavender syrup:

- ◆ 100g / 3½oz. dried lavender flower buds
- ◆ 500ml / 17oz. sugar
- ◆ 500ml / 17oz. water

In a saucepan, bring the water and lavender to a boil. Stir in sugar until it fully dissolves. Reduce heat and simmer for 10 minutes. Remove from heat and let cool. Steep for 1 hour. Strain and refrigerate.

GARNISH

Lemon and fresh lavender

SERVE IN

Martini glass



CALL US

WE'RE HERE FOR ALL YOUR
BUBBLY QUESTIONS:

SODASTREAM.COM.AU 1300 763 278

COME ON BOARD

REGISTER YOUR MACHINE AND RECEIVE
EXCLUSIVE INFORMATION AND OFFERS

Go to sodastream.com/rega or scan the code:





sodastream®