

**ensò**  
a sodastream  
experience™

# USA and Canada only **USER LICENSE**

**FOR ONE SODASTREAM QUICK CONNECT CYLINDER NOT FOR SALE  
PROPERTY OF SODASTREAM INDUSTRIES LTD.  
OR ITS AFFILIATES PROVIDED UNDER LICENSE AND PATENT PENDING**

This is a legally binding document between SodaStream Industries Ltd. or its affiliates ("SodaStream") and the consumer regarding the right to use a SodaStream CO<sub>2</sub> Quick Connect Cylinder (the "Cylinder").

The Cylinder is proprietary to SodaStream, patent pending and protected by other intellectual property rights. Further, to protect users' safety and health, various directives and regulations govern and regulate the use, refilling, maintenance, retesting and repair of the Cylinder. SodaStream possesses the legally required knowledge and expertise to be responsible for strict legal compliance that can only be guaranteed if the Cylinder is maintained, examined, retested and refilled by it. Thus, the Cylinder remains the property of SodaStream and is provided under License.

1. When empty, please return the Cylinder to either SodaStream or an authorized SodaStream distributor in exchange for a full Cylinder, for the price of the gas refill only. This License will continue to bind the use of each subsequent Cylinder.
2. Refilling an empty Cylinder by third parties may infringe SodaStream's intellectual property rights, including patents and other proprietary rights, may be risky and may violate certain laws. SodaStream only warrants the safety of Cylinders refilled by it, bearing a SodaStream tamper proof valve seal. You may not remove or change any proprietary notice appearing on or accompanying the Cylinders.
3. If you return the Cylinder to SodaStream or an authorized SodaStream distributor, without exchanging it for a full one, you will be entitled to a return fee of 2 \$ or local equivalent.
4. The Cylinder, together with this User License, may be transferred to a third party provided the third party agrees to be bound by the conditions and ownership rights expressed herein. Possession of this User License proves the right of its holder to use one Cylinder under the terms herein.

For questions, please contact SodaStream International BV, Dongenseweg 200, 5047 SH Tilburg, The Netherlands.

**STEP INTO A WORLD OF EXPERIENCES**

[www.sodastream.com](http://www.sodastream.com)  
[www.sodastream.ca](http://www.sodastream.ca)

# UK only **USER LICENSE**

## **FOR ONE SODASTREAM QUICK CONNECT CYLINDER NOT FOR SALE PROPERTY OF SODASTREAM INDUSTRIES LTD. OR ITS AFFILIATES PROVIDED UNDER LICENSE AND PATENT PENDING**

This is a legally binding document between SodaStream Industries Ltd. or its affiliates ("SodaStream") and the consumer regarding the right to use a SodaStream CO<sub>2</sub> Quick Connect Cylinder (the "Cylinder").

The Cylinder is proprietary to SodaStream, patent pending and protected by other intellectual property rights. Further, to protect users' safety and health, various directives and regulations govern and regulate the use, refilling, maintenance, retesting and repair of the Cylinder. SodaStream possesses the legally required knowledge and expertise to be responsible for strict legal compliance that can only be guaranteed if the Cylinder is maintained, examined, retested and refilled by it. Thus, the Cylinder remains the property of SodaStream and is provided under License.

1. When empty, please return the Cylinder to either SodaStream or an authorized SodaStream distributor in exchange for a full Cylinder, for the price of the gas refill only. This License will continue to bind the use of each subsequent Cylinder.
2. Refilling an empty Cylinder by third parties may infringe SodaStream's intellectual property rights, including patents and other proprietary rights, may be risky and may violate certain laws. SodaStream only warrants the safety of Cylinders refilled by it, bearing a SodaStream tamper proof valve seal. You may not remove or change any proprietary notice appearing on or accompanying the Cylinders.
3. If you return the Cylinder to SodaStream or an authorized SodaStream distributor, without exchanging it for a full one, you will be entitled to a return fee of 1£ or local equivalent.
4. The Cylinder, together with this User License, may be transferred to a third party provided the third party agrees to be bound by the conditions and ownership rights expressed herein. Possession of this User License proves the right of its holder to use one Cylinder under the terms herein.

For questions, please contact SodaStream International BV, Dongenseweg 200, 5047 SH Tilburg, The Netherlands.

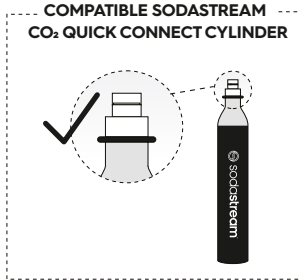
## **STEP INTO A WORLD OF EXPERIENCES**

[www.sodastream.com](http://www.sodastream.com)  
[www.sodastream.co.uk](http://www.sodastream.co.uk)  
[www.sodastream.com.au](http://www.sodastream.com.au)

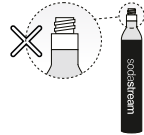
# SET UP

## SODASTREAM® CO<sub>2</sub> QUICK CONNECT CYLINDER

Please note that **ensō™/MC** is only compatible with the SodaStream CO<sub>2</sub> Quick Connect Cylinder and is NOT compatible with the SodaStream® CO<sub>2</sub> Screw System Cylinder or other cylinders.



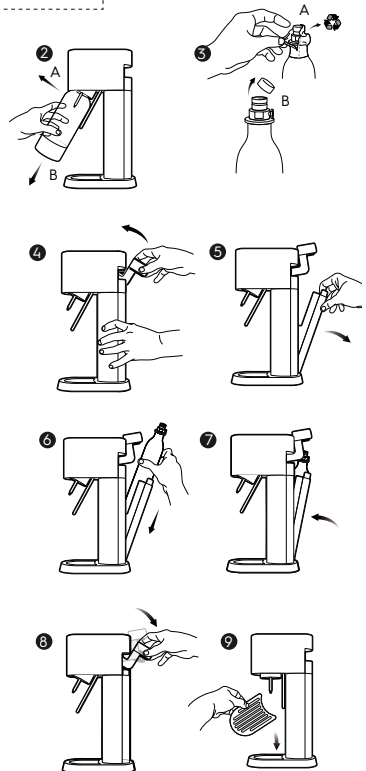
NON-COMPATIBLE  
CO<sub>2</sub> SCREW SYSTEM CYLINDER



### INSTALLING THE CO<sub>2</sub> QUICK CONNECT CYLINDER

1. Place **ensō™/MC** Sparkling Water Maker on a flat sturdy surface.
2. Gently pull the plastic carbonating bottle towards you until it reaches its fully forward position. This will allow the plastic carbonating bottle to be released from the Snap-Lock.
3. Remove seal and cap from the SodaStream CO<sub>2</sub> Quick Connect Cylinder. **WARNING! Never insert or replace the CO<sub>2</sub> Quick Connect Cylinder while a Carbonating Bottle is installed in the Sparkling Water Maker. This can cause the Carbonating Bottle to be ejected or burst.**
4. Raise the cylinder handle.
5. Open the cylinder compartment.
6. insert the CO<sub>2</sub> Quick Connect Cylinder into the cylinder compartment of the Sparkling Water Maker.
7. Close the cylinder compartment.
8. Lower the cylinder Handle.
9. Place the drip tray on the base of your Sparkling Water Maker.

Now you are ready to create the bubbles.



# CREATE THE BUBBLES

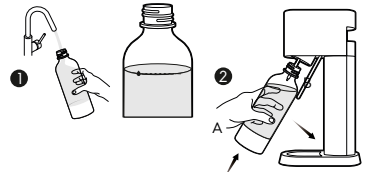
## ONLY COMPATIBLE WITH THE FOLLOWING PLASTIC BOTTLES:

Check for compatibility on the bottle pack.

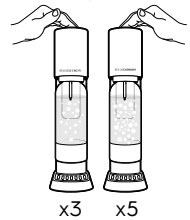
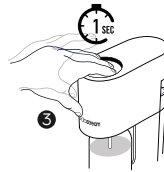
1. Fill the plastic carbonating bottle with cold water up to the fill line. **WARNING! Do not carbonate anything other than water. Other liquids can contaminate and clog internal parts, potentially resulting in excessive pressure, bottle failure during carbonation and serious injury. Never carbonate after flavoring has been added.**
2. To insert the plastic carbonating bottle make sure that the bottle rest is angled forward. Please make sure you do not pull the carbonating tube. **WARNING! Never use a Sparkling Water Maker with a broken carbonating tube. This can cause excessive pressure, bottle failure and serious injury.** Insert the Plastic Carbonating Bottle neck into the Snap-Lock system. Push the Plastic Carbonating Bottle up and back. The Snap-Lock will hold the Plastic Carbonating Bottle.
3. To carbonate, press the carbonating button in short 1 second presses; 3 presses for standard carbonation and 5 presses for strong carbonation.
4. When the desired level of carbonation is achieved, gently pull the plastic carbonating bottle towards you until it reaches its fully forward position. This will release the pressure in the plastic carbonating bottle and allow the plastic carbonating bottle to be released from the Snap-Lock.



SodaStream- plastic carbonating bottles



**Note:** When inserted correctly, there is a small gap between the bottom of the Plastic Carbonating Bottle and the base. Do not carbonate if the Plastic Carbonating Bottle is resting on the base, or water will splash out.

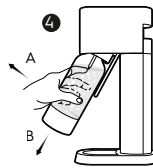


**WARNING! Do not remove Plastic Carbonating Bottle until after hearing the sound of excess CO<sub>2</sub> being released.** Never force the Plastic Carbonating Bottle out of the Snap-Lock. Always allow the Sparkling Water Maker to release the Plastic Carbonating Bottle. If the Plastic Carbonating Bottle does not immediately release, then push the Plastic Carbonating Bottle back into the vertical position and gently pull it towards you again. **Attempting to remove the Plastic Carbonating Bottle while it is still pressurized can cause uncontrolled ejection of the Plastic Carbonating Bottle and may result in serious injury.**

## CARE

### SPARKLING WATER MAKER CARE

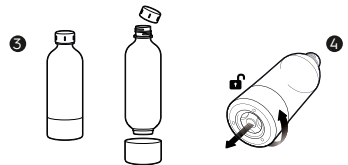
1. Never use abrasive cleaners or sharp tools to clean. To make your Sparkling water maker shine like new, use the special cleaning cloth supplied with the machine. You can also use stainless steel cleaning agents for home appliances.
2. Remove the drip tray and wipe spills to keep base dry. Drip tray is dishwasher-safe.
3. Do not place your Sparkling Water Maker in water or wash in a dishwasher, doing so will seriously damage your Sparkling Water Maker.



**Note:** You may see small pieces of ice appear in the water during carbonation of very cold water. Any ice created will simply melt.

### PLASTIC CARBONATING BOTTLE CARE

1. For plastic carbonating bottles which are not "dishwasher safe", to clean, rinse plastic carbonating bottles with cold or lukewarm water. **WARNING! Do not expose to heat above 50°C / 120°F. Never wash or rinse in hot water. Do not wash in dishwasher.**
2. For "dishwasher safe" plastic carbonating bottles, to clean, either wash in dishwasher or rinse Plastic Carbonating Bottles with cold or lukewarm water. **WARNING! Do not expose to heat above 70°C / 158°F.**
3. The bottle base is removable. Removing the base & cap before cleaning ensures best hygiene. After removing the base, follow cleaning instructions of the bottle as shown above. The metal base cup may be cleaned in the dishwasher.
4. To remove the base - hold the bottle, gently turn and pull the base until it comes loose. After cleaning, put it back by turning until it clicks into place.



# FOR YOUR SAFETY

## SAVE THESE INSTRUCTIONS AND PROVIDE THEM TO ANY SUBSEQUENT USERS.

**WARNING!** Before using the Sparkling Water Maker, to reduce risk of personal injury and damage to your product, please read this important safety information.

Before allowing anyone to use your Sparkling Water Maker, please be sure they understand how to do so safely. Any servicing or repair should be performed by a SodaStream-authorized service representative. The Sparkling Water Maker is only intended for use by people over the age of 12. People with reduced physical or mental capabilities should only use the product if they are supervised by an adult responsible for their safety and after they have been given instruction concerning the safe use of the product. Do not transport the machine with the cylinder and/or bottle attached.

## TO REDUCE THE RISK OF EITHER SERIOUS INJURY OR DAMAGE TO THE SPARKLING WATER MAKER DURING CARBONATION:

- Only use your Sparkling Water Maker in its upright position, on a flat, stable surface.
- Do not place your Sparkling Water Maker on a hot surface (e.g. kitchen oven/stove) and never use it close to a flame or leave in direct sunlight.
- Carbonate water only.
- Do not add flavor before carbonation. Other liquids (except water) can contaminate and clog internal parts, potentially resulting in excessive pressure and bottle failure during carbonation.
- Do not use the Sparkling Water Maker if the carbonating tube is broken or missing.
- Check that your plastic carbonating bottle is properly connected before carbonating.
- Do not move your Sparkling Water Maker or remove the plastic carbonating bottle during carbonation.
- Do not carbonate an empty plastic carbonating bottle.
- Do not transport the machine with the cylinder and/or bottle attached.

## CARBON DIOXIDE CYLINDER

To reduce the risk of a CO<sub>2</sub> leak, personal injury and property damage:

- Do not use any cylinder other than the SodaStream® CO<sub>2</sub> Quick Connect Cylinder compatible with this Sparkling Water Maker.
- Do not insert a CO<sub>2</sub> Cylinder into the Sparkling Water Maker when a plastic carbonating bottle is installed.
- Do not use if damaged. Inspect the CO<sub>2</sub> Cylinder and CO<sub>2</sub> Cylinder valve prior to use for dents, punctures, or other damage. If damaged, contact a SodaStream-authorized service representative.
- Do not tamper with the CO<sub>2</sub> Cylinder in any way, including puncturing, incinerating or removing the valve.
- Do not expose the CO<sub>2</sub> Cylinder to heat above 50°C / 120°F. Protect from sunlight. Store in a well-ventilated area.
- Do not remove a CO<sub>2</sub> Cylinder from the Sparkling Water Maker when it is being operated.
- Do not handle or remove a CO<sub>2</sub> Cylinder while it is discharging CO<sub>2</sub>.

In the event of a CO<sub>2</sub> leak, ventilate the area, breathe fresh air and if feeling unwell seek immediate medical attention.

## PLASTIC CARBONATING BOTTLE

To reduce the risk of bottle failure which can result in personal injury and property damage:

- For plastic carbonating bottles not marked as "dishwasher safe", do not expose to heat above 50°C / 120°F. Never wash or rinse in hot water. Do not wash in dishwasher.
- For "dishwasher safe" plastic carbonating bottles, do not expose to heat above 70°C / 158°F.
- Do not place the plastic carbonating bottle next to a heat source such as your kitchen oven/stove.
- Do not leave the plastic carbonating bottle in a car.
- Do not place the plastic carbonating bottle in the freezer or in extreme cold below 1°C / 34°F.
- Do not use the plastic carbonating bottle if damaged, deformed, changes in shape, scratched, worn, or discolored.
- Do not use a plastic carbonating bottle after its expiration date.
- Only carbonate with plastic carbonating bottles specifically designed to work with this Sparkling Water Maker, as shown on page 6 above.

## BOTTLE WARNING ICONS



Read the manual



Bottle failure may result  
in personal injury



Never use after  
expiry date



Never wash  
in dishwasher



Never expose to temperatures  
above 120°F / 50°C  
or below 34°F / 1°C



Carbonate  
water only



Never use if damaged  
or deformed

## FOR DISHWASHER-SAFE BOTTLES



Never expose to temperatures above  
158°F / 70°C or below 34°F / 1°C



Dishwasher safe

## SODASTREAM LIMITED WARRANTY

### SODASTREAM® SPARKLING WATER MAKERS

Great care has been taken to ensure that your Sparkling Water Maker was delivered to you in good condition. SodaStream® warrants, subject to the terms and conditions set forth in this limited warranty, that your Sparkling Water Maker will be free of defects in materials and workmanship under normal home use for 2 (two) years following the date of purchase. It is recommended that you register your Sparkling Water Maker online by visiting [www.sodastream.com](http://www.sodastream.com) and completing the product registration form available on the website.

If your Sparkling Water Maker malfunctions within the warranty period, and we determine the problem is due to faulty workmanship or materials, SodaStream will repair or replace it free of charge at SodaStream's discretion within the limitations set out in this warranty. SodaStream may replace your Sparkling Water Maker with a reconditioned Sparkling Water Maker, or an equivalent one if the model you purchased is no longer available. No refunds shall be given. This limited warranty is available to consumers who purchased the Sparkling Water Maker for personal, family or household use.

**This warranty DOES NOT cover damages to Sparkling Water Maker resulting from:**

- Abuse, misuse, alteration of the Sparkling Water Maker, or commercial use.
- Carbonating liquids other than water.
- Normal wear and tear (e.g. discoloration).
- Product malfunctions that were a result, in whole or in part, by alteration, disassembly, or repair of the Sparkling Water Maker by a servicer other than an authorized SodaStream Service Center.
- The use of CO<sub>2</sub> Cylinders or carbonating bottles other than those approved by SodaStream for use with your Sparkling Water Maker.
- The use of the Sparkling Water Maker with an adapter connected to the Cylinder valve or to the Sparkling Water Maker.
- The use of an expired plastic carbonating bottle.
- Accident, shipment or anything other than normal household use.

**This warranty DOES NOT cover the carbonating bottles and CO<sub>2</sub> Cylinders**

SodaStream is not liable for incidental or consequential damages. The consumer's sole and exclusive remedy shall be repair or replacement according to the terms and conditions of this warranty. Some local laws do not allow the exclusion or limitation of these damages, so these exclusions may not apply to you. To the extent that this warranty is inconsistent with local law, this warranty shall be deemed modified to be consistent with such local law. You may also have other rights, which vary in accordance with local laws. The benefits given to the consumer by this warranty are in addition to other rights and remedies that may be afforded to the consumer by law in relation to this Sparkling Water Maker.

**TO OBTAIN WARRANTY SERVICE FOR YOUR SPARKLING WATER MAKER**

If your Sparkling Water Maker is in need of warranty service, please contact SodaStream Customer Service by visiting [www.sodastream.com](http://www.sodastream.com). A SodaStream representative will give you specific instructions on how to arrange for the shipment of your Sparkling Water Maker, at your expense, to one of our authorized service centers. Only SodaStream®, or its agents, are authorized to provide warranty repairs or service to your Sparkling Water Maker.

**NON-WARRANTY SERVICE**

If SodaStream® or its authorized agents determine that the malfunction or damage to your Sparkling Water Maker is not covered by the warranty, SodaStream® will repair the Sparkling Water Maker only upon payment of the determined repair charge.

**FOR CALIFORNIA RESIDENTS**

California residents may also obtain warranty service by returning any malfunctioning Sparkling Water Maker directly to a retail store that sells similar SodaStream products. At the retail store's discretion, it may either replace the Sparkling Water Maker or arrange for shipment to a SodaStream repair facility. Sparkling Water Maker registration is not a prerequisite for warranty protection.

**FOR AUSTRALIAN RESIDENTS**

Our Sparkling Water Maker comes with guarantees that cannot be excluded under the Australian Consumer Law. Australian residents are entitled to a replacement or refund for a major failure and compensation for any other reasonably foreseeable loss or damage.

Australian residents are also entitled to have the Sparkling Water Maker repaired or replaced if it fails to be of acceptable quality and the failure does not amount to a major failure. The issuer of this warranty is SodaStream Australia Pty Ltd., 21 Henderson Road, Knoxfield, Victoria 3180, Australia, Telephone No.: 1300 763 278, email: [sales-australia@sodastream.com](mailto:sales-australia@sodastream.com) Should the Sparkling Water Maker suffer a major failure or other reasonably foreseeable damage, contact us at the above phone number, email or mailing address to present your claim for the warranty. If Australian residents are returning the Sparkling Water Maker in accordance with their rights under the Australian Consumer Law: (a) the Sparkling Water Maker does not need to be in its original packaging to be returned, however you must ensure that the Sparkling Water Maker is adequately protected for transit; and (b) Australian residents will be required to pay any delivery costs when returning items to us, however SodaStream Australia Pty Ltd., will refund reasonable delivery costs if they are entitled to a remedy under the Australian Consumer Law (subject to you providing proof of these costs). The benefits to the Australian consumer given by this warranty are in addition to other rights and remedies that may be afforded to the Australian consumer by law in relation the Sparkling Water Maker.

## **SODASTREAM® CO<sub>2</sub> QUICK CONNECT CYLINDERS**

Your Sparkling Water Maker has been designed to operate with a SodaStream® CO<sub>2</sub> Quick Connect Cylinder. The use of other CO<sub>2</sub> Cylinders is not recommended as they may not be compatible with a SodaStream® Sparkling Water Maker. Damages resulting from the use of a cylinder other than a the SodaStream® CO<sub>2</sub> Quick Connect Cylinder or use of the SodaStream CO<sub>2</sub> Quick Connect Cylinder not in accordance with the instructions included in this User Guide are not covered by the warranty. The SodaStream® CO<sub>2</sub> Quick Connect Cylinder is provided to you under license. The license allows you to exchange your empty Cylinder for a full one for the price of the CO<sub>2</sub> only.

## **SODASTREAM® PLASTIC CARBONATING BOTTLES**

Your Sparkling Water Maker has been designed to operate with a compatible SodaStream® plastic carbonating bottle. Damages resulting from the use of a carbonating bottle other than a compatible SodaStream® plastic carbonating bottle or use of carbonating bottles not in accordance with the instructions included in this User Guide are not covered by the warranty. SodaStream® plastic carbonating bottles are available from authorized SodaStream® retailers.

### **TERMS AND CONDITIONS for all EXCEPT U.S.A. consumers:**

Any and all claims, complaints, demands for judgment or legal actions brought hereunder relating in any way to your Sparkling Water Maker, plastic carbonating bottles or CO<sub>2</sub> Quick Connect Cylinder shall be governed by, and construed in accordance with the local laws of the country in which the SodaStream® Sparkling Water Maker was purchased.

### **TERMS AND CONDITIONS [for U.S.A. consumers only]:**

Any and all claims, complaints, demands for judgment or legal actions brought hereunder relating in any way to your Sparkling Water Maker, plastic carbonating bottle or CO<sub>2</sub> Cylinder shall be governed by, and construed in accordance with, the local laws of the State in which the SodaStream® Sparkling Water Maker was purchased and will be subject to binding arbitration as set out under the heading "Dispute Resolution by Binding Arbitration".

### **[The following paragraph for U.S.A. consumers only]**

#### **DISPUTE RESOLUTION BY BINDING ARBITRATION PLEASE READ CAREFULLY. IT AFFECTS YOUR RIGHTS.**

Any dispute, controversy or claim arising out of or relating to any SodaStream product including, but not limited to, claims of personal injury and/or property damage, shall be submitted to arbitration administered by the American Arbitration Association in accordance to its then existing Consumer Arbitration Rules. The AAA Rules are available online at [HYPERLINK "http://www.adr.org/"](http://www.adr.org/)www.adr.org, or by calling the AAA at 800.778.7879. The Federal Arbitration Act (Title 9 of the U.S. Code) shall govern the interpretation, enforcement, and proceedings relating to this arbitration. Arbitration is more informal than a lawsuit in court. It uses a neutral arbitrator instead of a judge or jury, allows for more limited discovery than in court, and is subject to very limited review by courts. Arbitrators can award the same damages and relief that a court can award. By agreeing to arbitration, the parties understand and agree that they are waiving their rights to maintain other available resolution processes, such as a court action or administrative proceeding, to settle their disputes. Any claim shall be brought only in the party's individual capacity, and shall not in any case be brought by the party as a plaintiff or class member in any purported class or representative proceeding. A party who intends to seek arbitration must first send to the other, by certified mail, a written Notice of Dispute ("Notice"). The Notice to SodaStream should be addressed to SodaStream's Corporate Office set out on [www.sodastream.com](http://www.sodastream.com) ("Notice Address"). The Notice must (a) describe the nature and basis of the claim or dispute; and (b) set forth the specific relief sought. If an agreement to resolve the claim is not reached within 30 days after the Notice is received, any party may commence an arbitration proceeding. During the arbitration, the amount of any settlement offer made by a party shall not be disclosed to the arbitrator. There shall be one arbitrator. The arbitrator shall have the power to rule on his or her own jurisdiction, including, but not limited to, any objections with respect to the existence, scope, or validity of the arbitration provision or to the arbitrability of any claim or counterclaim. The arbitrator's award shall be binding on all parties, and judgment upon the award may be entered by any court of competent jurisdiction.

### **PRODUCT DISPOSAL INSTRUCTIONS**

Please recycle your expired and damaged plastic carbonating bottles in accordance with local recycling laws. The packaging in which SodaStream products are supplied is made of recyclable materials. Contact your local authority for further information on recycling.

### **MACHINE RATING INFORMATION**

Maximum Working Pressure: 116 psi/8 bar

Maximum Allowed Operating Temperature: 40°C/104°F

SodaStream® is a registered trademark of SodaStream (Switzerland) GmbH or its affiliates.

# ensò

## a sodastream experience™

### AUSTRIA

SodaStream Österreich GmbH  
Arbeitergasse 50, 2333 Leopoldsdorf,  
Service-Hotline: 0800 204041  
(kostenlos, Mo.-Fr. 9-17 Uhr)

### BENELUX

SodaStream Enterprises NV,  
Reduittlaan 42, 4814DC Breda  
Nederland / Pays-Bas  
Tel: 0800-0223637 (NL)  
Tel: 0800-74807 (BE)  
Tel: 0800-28527 (LUX)

### CANADA

SodaStream Canada  
325A Annagem Blvd  
Mississauga, ON  
Canada L5T 3A7  
Tel./Tél.: 1.877.436.586

### FRANCE

SodaStream France SAS  
20, rue Véga - CS 10015,  
44482 CARQUEFOU Cedex  
Tel: 02 28 16 61 02

### GERMANY/ DEUTSCHLAND

SodaStream GmbH  
Solmsstrasse 4, 60486 Frankfurt am Main,  
Service-Hotline: 0800 1 831066  
(kostenlos, Mo.-Fr. 9-17 Uhr)

### POLAND:

SODASTREAM POLAND SP. Z O.O.  
Beyond Office  
ul. Żelazna 51/53  
00-841 Warszawa  
Infolinia: +48 22 152 33 26  
[www.sodastream.pl](http://www.sodastream.pl)

### ITALY

SodaStream International B.V.  
Italian Branch  
Viale dell'Industria 60 - 35129 Padova (PD)  
Tel: +39049.6720001

### PORTUGAL

CLEVERHOUSE Lda  
Rua Silva Porto, 476  
4 Andar - Sala A  
4250 - 470 Porto  
Tel: +351-228-310-796

### SPAIN

SodaStream Iberia, S.L.  
Avenida de Europa, 14  
28108 Alcobendas  
Madrid - España.

SCHWEIZ / SUISSE / SVIZZERA  
SodaStream (Switzerland) GmbH  
Bösch 67, 6331 Hünenberg  
Tel.: 0800 800 812

### UK

SodaStream Worldwide Trading  
Company  
The Limes-12 Dunstable Street  
Amphill, Bedfordshire  
MK45 2GJ, United Kingdom  
Tel: 0800 0858375

### USA

Sodastream USA Inc.  
Purchase, NY 10577  
[www.sodastream.com](http://www.sodastream.com)  
Customer Support Information:  
1.800.763.2258

