

WOLSTEAD

Pulse Stick Blender 1200W

Owner's Manual



IMPORTANT:

Read and follow all warnings and instructions before assembly and use.
Keep this manual for future reference.

SPECIFICATIONS

- Model number: 710272
- Voltage: 220-240V ~ 50/60Hz
- Power consumption: 1200W

PRODUCT FEATURES

This 1200W stainless steel stick blender delivers powerful, versatile performance for any kitchen. Its durable stainless steel shaft and titanium-plated blade ensure smooth, consistent results. With an ergonomic design and handy accessories, it makes blending, chopping, and mixing fast and effortless.

- Blending shaft and blades are made from premium stainless steel
- Titanium-plated, stainless steel chopping blade stays sharper for longer, delivering exceptional durability and resistance to corrosion
- Calibrated 500mL chopping bowl and 800mL beaker make it easy to measure ingredients
- Beaker includes a silicone lid so you can prep and store in one container
- Ergonomic handle with seven adjustable speeds

SAFETY PRECAUTIONS

Please read these instructions carefully before using the appliance:

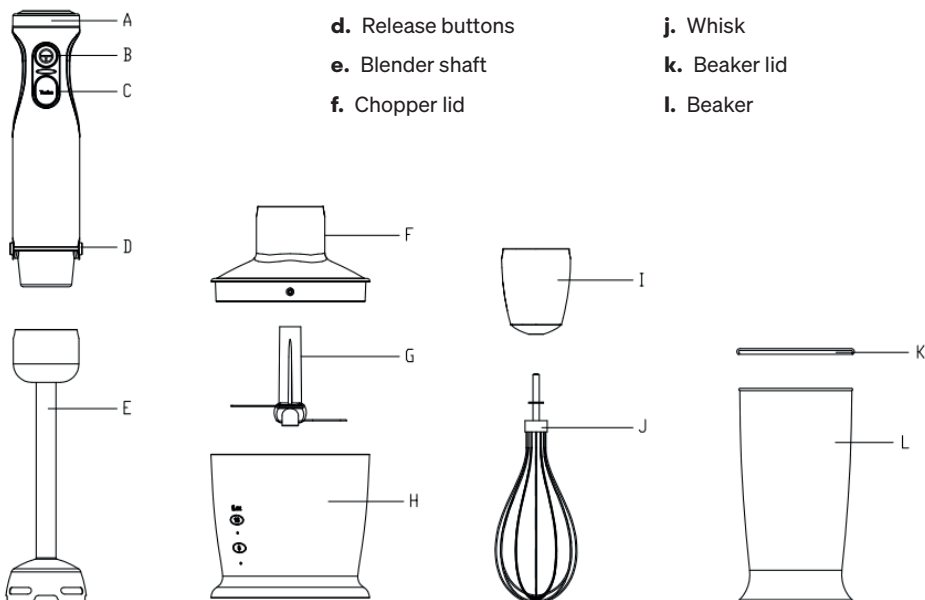
1. Read all instructions before using.
2. Ensure the voltage is compliant with the voltage range stated on the rating label.
3. If the supply cord is damaged, it must be replaced by the manufacturer, its service agent or similarly qualified persons in order to avoid a hazard.
4. This appliance is not intended for use by persons (including children) with reduced physical, sensory or mental capabilities, or lack of experience and knowledge, unless they have been given supervision or instruction concerning use of the appliance by a person responsible for their safety.
5. Children should be supervised to ensure that they do not play with the appliance.
6. This appliance is intended to be used in household and similar applications such as:
 - a. Staff kitchen areas in shops, offices and other working environments.
 - b. Farmhouses.
 - c. By clients in hotels, motels and other residential type environments.
 - d. By bed and breakfast type environments.
7. Always disconnect the appliance from the power supply if unattended and before assembling, disassembling or cleaning.
8. Do not use attachments or accessories which are not recommended by the manufacturer.
9. The product is only suitable for the purpose indicated in this manual. Do not use this product or any part for other purposes. If it is operated incorrectly, it may cause injury.

10. Always use the appliance on a firm and stable surface and keep it 30cm from other objects and the wall to ensure heat is easily released.
11. Never plug the appliance into power unless fully assembled. Always unplug before disassembling or handling the blades.
12. The blades are extremely sharp. Handle with care.
13. Keep hands and utensils away from the container while blending.
14. Avoid contact with moving parts.
15. Do not let the cord or motor come into contact with hot surfaces.
16. Do not blend hot liquids.
17. The measuring beaker and chopping bowl are not microwave safe.
18. Use in short intervals (maximum of three cycles):
 - Soft food: maximum of one minute
 - Hard food: maximum 15 seconds per cycle
19. Never place the cutting blade on the base without securing the bowl properly.
20. Ensure the cover is securely locked before use.

GET TO KNOW THE WOLSTEAD PULSE STICK BLENDER

Overview of parts

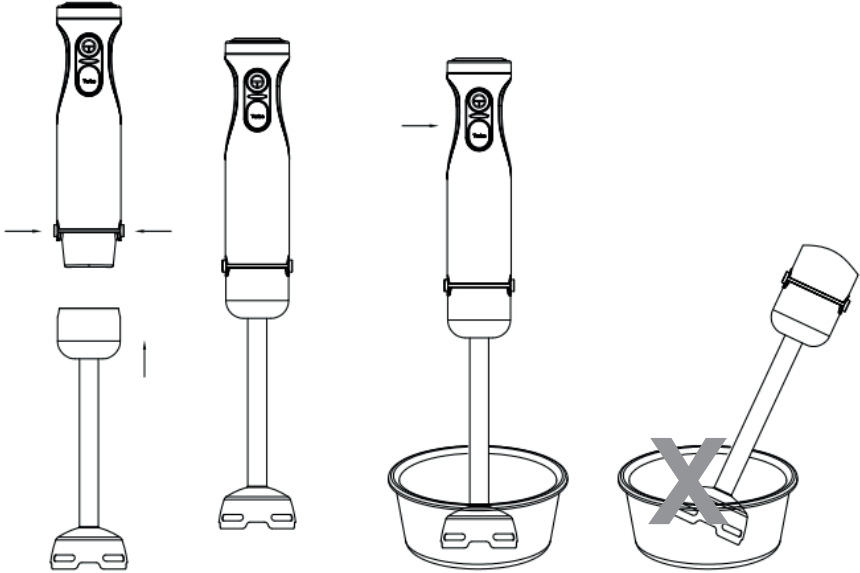
- a. Speed control
- b. On button
- c. Turbo button
- d. Release buttons
- e. Blender shaft
- f. Chopper lid
- g. "S" blade
- h. Chopping bowl
- i. Whisk holder
- j. Whisk
- k. Beaker lid
- l. Beaker



OPERATING INSTRUCTIONS

Using the hand blender

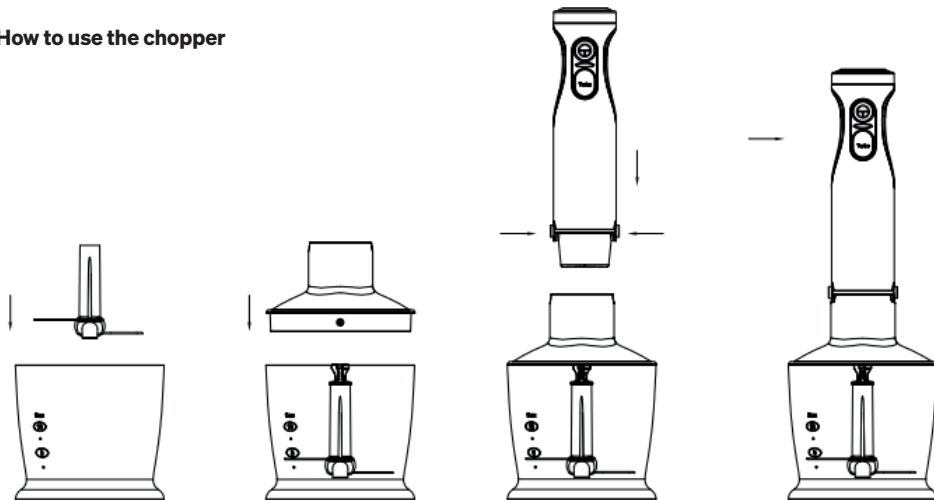
Perfect for preparing dips, sauces, soups, mayonnaise, baby food and milkshakes.



1. Insert the blender shaft (E) into the motor unit until it clicks into place.
2. Place the blender in the vessel or beaker. Press the ON button or the TURBO button to begin blending.
3. Unplug the appliance. Press the release buttons (D) to detach the blender shaft.

You can use the hand blender in the included beaker or any other appropriate vessel.

How to use the chopper



Suitable for chopping meat, cheese, onions, herbs, garlic, carrots, walnuts, almonds, prunes and more. Do NOT use the chopper for extremely hard items like ice cubes, nutmeg, coffee beans or bones.

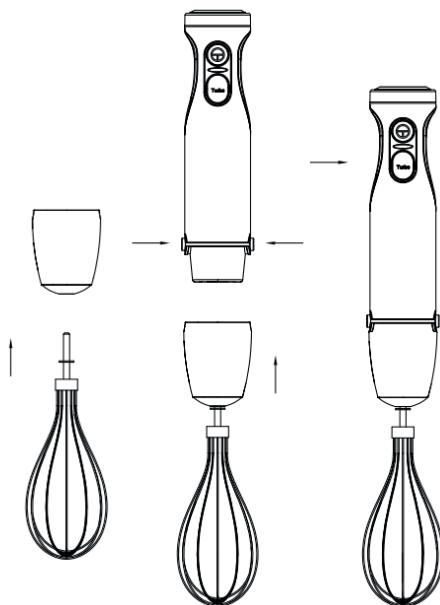
Before you start chopping:

1. Carefully remove the plastic cover from the blade. Caution: The blade is very sharp. Always handle it by the plastic part.
2. Place the blade onto the centre pin of the chopping bowl.
3. Add food to the chopping bowl.
4. Place the chopper lid (F) on top.
5. Attach the motor unit securely.
6. Press the ON button or the TURBO button to begin chopping. Hold both the motor unit and the bowl for stability.
7. After use, unplug the appliance and press the release buttons to remove the motor unit.
8. Remove the chopper lid.
9. Carefully remove the blade.
10. Empty the chopped food.

How to use the whisk

Great for whipping cream, beating egg whites, making sponge mixes, and ready-mix desserts.

1. Insert the whisk (J) into the whisk holder (I). Attach the assembled whisk to the motor unit until it locks.
2. Place the whisk in a vessel or the included beaker. Press the ON button to begin mixing.
3. Unplug after use. Press the release button to detach the whisk attachment then remove the whisk.



Processing guide (500mL chopping bowl)

Food	Maximum amount	Operation time
Meat	250g	15 sec
Herbs	50g	10 sec
Nut, almonds	150g	15 sec
Cheese	100g	10 sec
Bread	80g	10 sec
Onions	200g	10 sec
Biscuits	150g	10 sec
Soft fruit	200g	10 sec

Cleaning and maintenance

Do not immerse the motor unit in water. Wipe it and the chopper lid with a damp cloth only.

1. All other parts (whisk, beaker, chopping bowl) are dishwasher safe. We recommend hand washing to extend the life of the attachments.
2. After chopping salty foods, rinse blades immediately.
3. Avoid using harsh cleaners or descaling agents.
4. Wipe stained plastic parts with vegetable oil before dishwashing.
5. Always unplug the appliance before cleaning.
6. Blades are sharp. Handle with care.

WARRANTY

Get in touch with Customer Service

If you experience any issues with your Wolstead Pulse Stick Blender 1200W, get in touch with our Customer Service team by email at customerservice@kitchenwarehouse.com, au or by phone on 1800 332 934 between the hours of 9am and 7pm (AEST) Monday to Friday. Alternatively you can use the Live Chat function on our website by visiting www.kitchenwarehouse.com.au/contact-us

90 day money back guarantee

We promise you a full refund within 90 days if your Wolstead product does not fulfil your expectations. This guarantee applies to qualified purchases of all Wolstead branded products from participating stockists online and in-store from eligible delivery locations. The qualified product must be returned within 90 days from the date of purchase. We shall issue a full refund when the customer presents proof of purchase. We shall issue a store credit when proof of purchase is unavailable. The product packaging is not required to avail of the refund. The amount refunded will be the price of the products in the currency shown on the proof of purchase.

Exclusions

This warranty does not apply if proper care and/or usage instructions are not followed. This warranty does not cover scratches, stains, discoloration or damage caused by misuse.

How to claim

If a fault/defect is identified cease using the Product immediately. To make a claim on this guarantee, take the Product, proof of purchase and full details of the alleged defect to any Kitchen Warehouse store.

Limitations

We make no express warranties or representations other than as set out in this guarantee. The replacement of the Product or the refund of the purchase price is the absolute limit of our liability under this guarantee.

Warranty

Our goods come with guarantees that cannot be excluded under the Australian Consumer Law. You are entitled to a replacement or refund for a major failure and for compensation for any other reasonably foreseeable loss or damage. You are also entitled to have the goods repaired or replaced if the goods fail to be of acceptable quality and the failure does not amount to a major failure.

The benefits of this warranty are in addition to any rights and remedies imposed by Australian State and Federal legislation that cannot be excluded. Nothing in this warranty excludes, restricts or modifies any State or Federal legislation applicable to the supply of goods which cannot be so excluded, restricted or modified.

Guarantee

We warrant that, subject to the exclusions and limitations below, the Product will be free from defects in materials and workmanship under normal domestic household use for the 12 month warranty period. The warranty period commences on the date of sale by the original retailer to the original purchaser. The warranty applies only while the Product is owned by the original purchaser.

Use of the Product in a commercial capacity will void this warranty. If a defect appears in the Product before the end of the warranty period and we find the Product to be defective in materials or workmanship, we will replace the Product with a product comparable in quality and value.

We reserve the right to change or discontinue our product ranges at any time without notice and without liability.

WOLSTEAD

Distributed by Kitchen Warehouse.

Wolstead is a registered trademark of Kitchen Warehouse Pty Ltd. The printed material appearing in this document and related packaging is protected by copyright.

Kitchen Warehouse Pty Ltd
1 Pensioner Guard Road
North Fremantle, WA, 6159
www.kitchenwarehouse.com.au
1800 332 934
customerservice@kitchenwarehouse.com.au