



## Inner-Safe™ Batt Insulation



Inner-Safe batt insulation meets and exceeds NFPA 13 Standard requirements—saving time and money on multi-family construction projects and mixed-use construction projects requiring NFPA 13 Standard Code by offering a superior alternative to sprinklers in interstitial spaces. Inner-Safe works with the typical joist types found in multi-family projects: I-Joist and Open Web.

### DEFINING NFPA 13

#### NFPA 13, SECTION

##### 8.15.1.2.7:

Non-Combustibles filled with non-combustible insulation shall not require sprinkler protection.

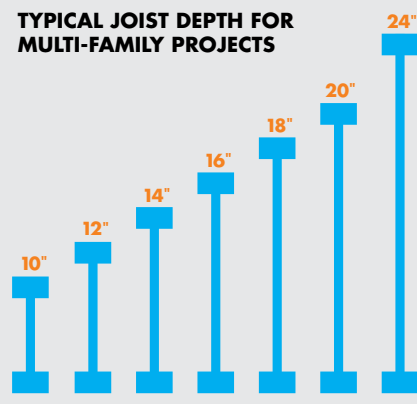
#### NFPA 13, SECTION

##### 8.15.1.2.7.1:

A maximum 2 in. air gap at the top of the space shall be permitted.

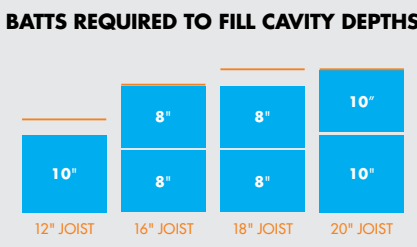
The language above, excerpted from NFPA 13 Standard, highlights revised sections that address requirements for the filling of interstitial spaces. Note that non-combustible insulation is now permitted—and that the code allows a maximum two-inch air gap at the top of the space. All trademarks are the property of their respective owners.

#### TYPICAL JOIST DEPTH FOR MULTI-FAMILY PROJECTS

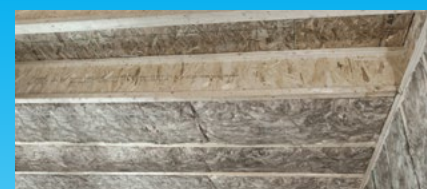


Inner-Safe Non-Combustible Batt Insulation works with all common joist types used in multi-family construction.

#### BATTS REQUIRED TO FILL CAVITY DEPTHS



The chart above shows a representative sample of different configurations, in single- or double-batt configurations, that meet NFPA 13 Standard requirements.



Inner-Safe batt insulation installed in I-Joist interstitial space.



Inner-Safe batt insulation installed in Open Web interstitial space.

# What Inner-Safe™ brings to your project:

## Simplicity

- Satisfies a range of joist depths from 8" to 24"
- Easier to estimate and allocate labor
- Friction-fits into cavities—no fasteners or support needed
- Same batt crews for walls and floor
- Provides easier inspection via a depth indicator on its packaging

## Advantages over sprinklers

- Requires no specialized labor or equipment to install
- Eliminates long-term maintenance and inspection costs
- Enhances thermal separation and noise reduction

## Advantages over loose fill and traditional batt insulation

- Requires no additional specialized equipment such as blowing wool trucks or machines, improving job site efficiencies
- Eliminates additional labor and netting needed for loose fill installs
- Installation costs are very competitive

## USE KNAUF INSULATION THROUGHOUT YOUR PROJECT

In multi-family and other construction projects, our products work together to seal the building envelope—offering enhanced comfort, energy-efficiency and sustainability.

Learn more about our full product line now, by visiting [knaufinsulation.us/en/products](http://knaufinsulation.us/en/products)



## INSTALLATION PROCESS



**STEP 1:** Remove product from package



**STEP 2:** Insert insulation into interstitial space



**STEP 3:** Mark and install validation tag

**Knauf Insulation, Inc.**  
One Knauf Drive  
Shelbyville, IN 46176

Sales ..... (800) 825-4434, ext. 8485  
Technical Support..... (800) 825-4434, ext. 8727

[www.knaufinsulation.us](http://www.knaufinsulation.us)

This product is covered by one or more U.S. and/or other patents.  
See [www.knaufinsulation.us/patents](http://www.knaufinsulation.us/patents)

© 2018 Knauf Insulation, Inc. BI-BTIS-SL | 08-18

