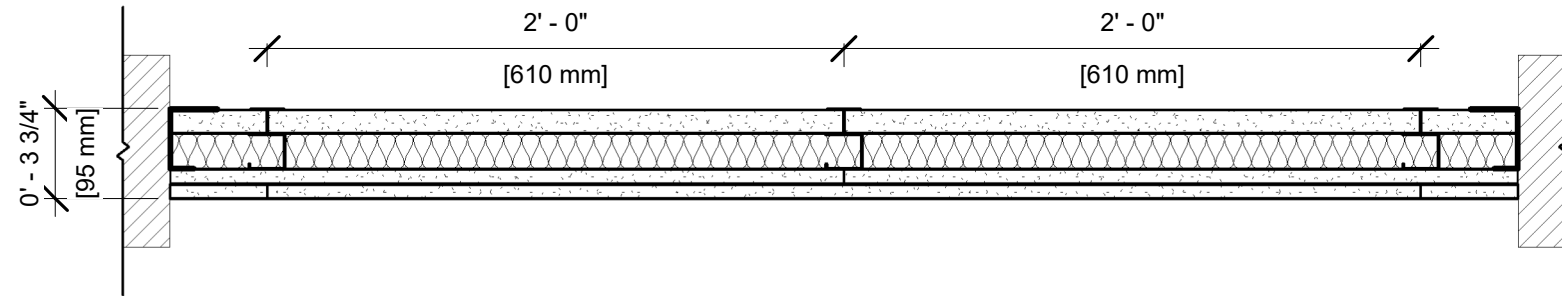


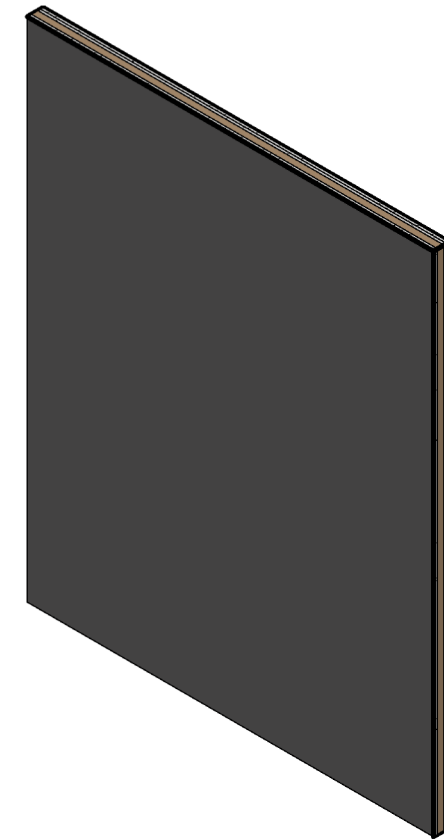
UL DESIGN NO. U415 B

FIRE RATING: 2 Hour
 STC: 37
 SYSTEM THICKNESS: 3 3/4"



ASSEMBLY OPTIONS:

- GYPSUM BOARD:** ONE LAYER 1" THICK GYPSUM LINER PANEL (UL TYPE SLX™)
- STEEL STUDS:** 2-1/2" CH STUDS, 20 GA. MSG., SPACED 24" O.C. WITH OPTIONAL KNAUF EcoBatt® INSULATION
- GYPSUM BOARD:** TWO LAYERS 5/8" THICK GYPSUM BOARD (UL TYPE ULIX™)



NOTES:

STUD AND INSULATION SIZES ARE MINIMUM UNLESS OTHERWISE STATED IN DESIGN.

FOR THE MOST UP-TO-DATE INFORMATION OR ASSEMBLY OPTIONS, REFER TO THE UL FIRE RESISTANCE DIRECTORY.

UL TYPE ULIX™ REQUIRES THE USE OF INSULATION FOR SINGLE-LAYER, STEEL-FRAMED UL FIRE-RATED ASSEMBLIES.

REFER TO THE UL FIRE RESISTANCE DIRECTORY FOR INFORMATION REGARDING PRODUCT ORIENTATION AND FASTENING REQUIREMENTS.