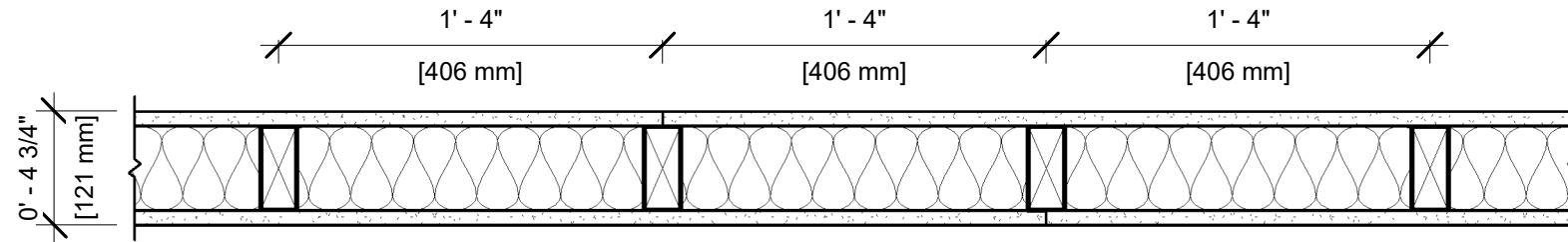


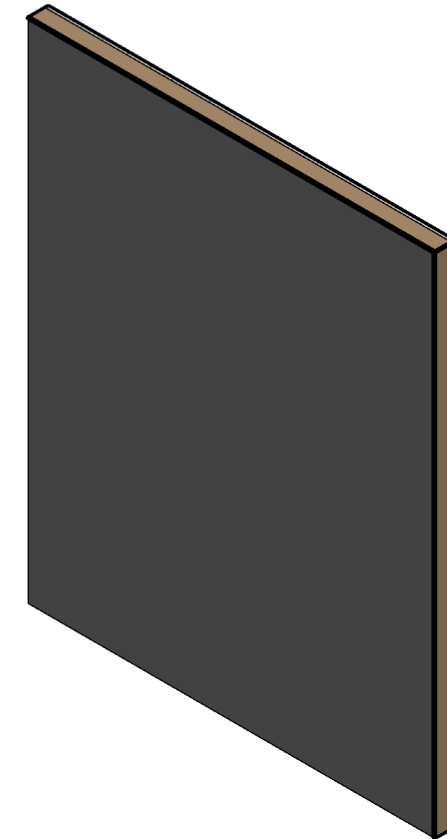
## UL DESIGN NO. U305

FIRE RATING: 1 Hour  
STC: 32  
SYSTEM THICKNESS: 4 3/4"



### ASSEMBLY OPTIONS:

**GYPSUM BOARD:** ONE LAYER 5/8" THICK GYPSUM BOARD (UL TYPE SCX™)  
**WOOD STUDS:** 2X4 WOOD STUDS, 16" O.C. 3-1/2" KNAUF EcoBatt® INSULATION OPTIONAL  
**GYPSUM BOARD:** ONE LAYER 5/8" THICK GYPSUM BOARD (UL TYPE SCX™)



### NOTES:

STUD AND INSULATION SIZES ARE MINIMUM UNLESS OTHERWISE STATED IN DESIGN.

FOR THE MOST UP-TO-DATE INFORMATION OR ASSEMBLY OPTIONS, REFER TO THE UL FIRE RESISTANCE DIRECTORY.

REFER TO THE UL FIRE RESISTANCE DIRECTORY FOR INFORMATION REGARDING PRODUCT ORIENTATION AND FASTENING REQUIREMENTS.