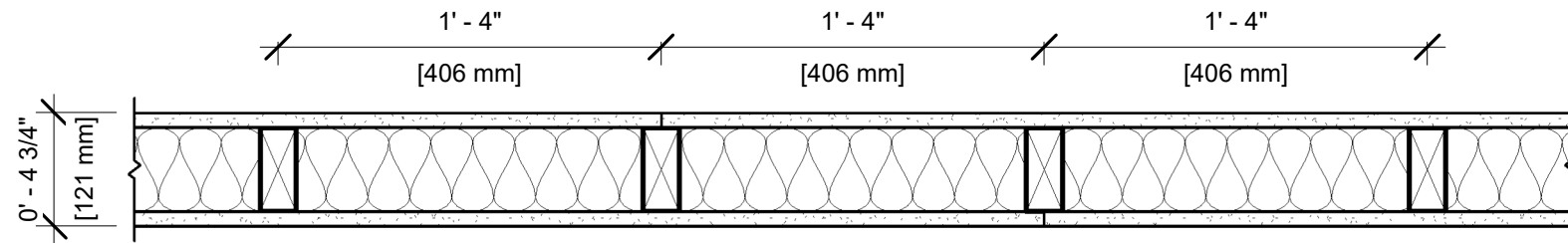


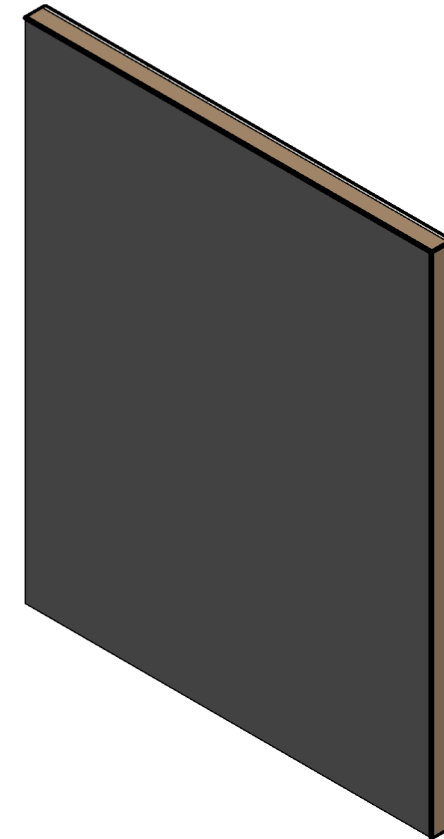
**UL DESIGN NO. U305**

FIRE RATING: 1 Hour  
 STC: 34  
 SYSTEM THICKNESS: 4 3/4"



**ASSEMBLY OPTIONS:**

- GYPSUM BOARD:** ONE LAYER 5/8" THICK GYPSUM BOARD (UL TYPE SCX™)
- WOOD STUDS:** 2X4 WOOD STUDS, 16" O.C.
- INSULATION:** 3-1/2" KNAUF EcoBatt® INSULATION IN CAVITY
- GYPSUM BOARD:** ONE LAYER 5/8" THICK GYPSUM BOARD (UL TYPE SCX™)



**NOTES:**

STUD AND INSULATION SIZES ARE MINIMUM UNLESS OTHERWISE STATED IN DESIGN.

FOR THE MOST UP-TO-DATE INFORMATION OR ASSEMBLY OPTIONS, REFER TO THE UL FIRE RESISTANCE DIRECTORY.

REFER TO THE UL FIRE RESISTANCE DIRECTORY FOR INFORMATION REGARDING PRODUCT ORIENTATION AND FASTENING REQUIREMENTS.