

QUIET.BOX Live

CLOSENESS AT A DISTANCE: OUR ROOM-IN-ROOM SOLUTION

FAN BOX

Various colours, including
RAL shades, to choose from

CEILING SAIL

with concealed ventilation

**VOICE LEVEL
REDUCTION**
Classification B
according to
ISO 23351-1

DOOR HINGES

3D-adjustable in silver,
optional in white or black

AMBIENTE LIGHT
can be incorporated for
good front lighting

CEILING-MOUNTED LIGHTS

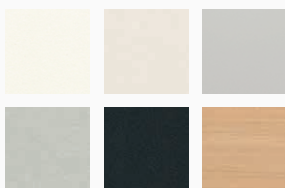
6-spot ceiling canopy for
homogeneous background lighting
supplied by Artemide.

PROFILES

Various colours,
including RAL shades,
to choose from

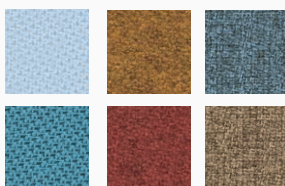
OPAQUE PANELS

can be chosen from the K+N
plastic/melamine finishes
(solid colour and wood effect)



FABRIC INNER SURFACES

for optimum internal
acoustics choose from the
K+N fabric collection
(Economy 71, Comfort 92,
Standard 901, 902 and 201)



ELECTRICS

Three variants are
available,
see back.

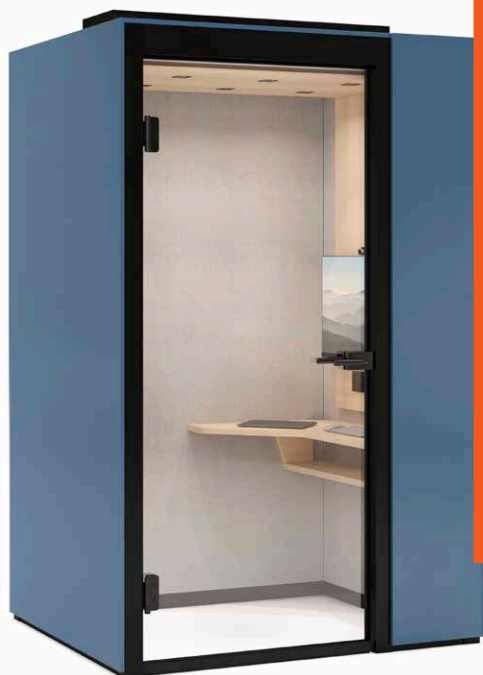
CONSOLE UNIT
optionally available with
or without shelf.
Colour choices in
melamine wood effect
from K+N collection,
including ceiling and
monitor panels.

DOOR ACOUSTIC GLAZING

Hinges and position optionally
left or right
(optional DIN right/DIN left)
Sound insulation value R_w 38 dB

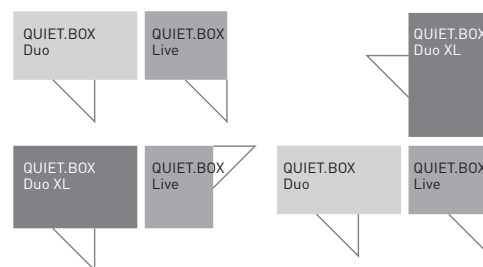


QUIET.BOX Live INFOCARD



Size	1,200 x 1,500 x 2,226 mm
Required room height	2,400 mm
Ceiling	Acoustic ceiling with concealed air outlets and integrated ceiling spotlights.
Wall configuration	2 variants
Absorption (echo)	Yes
Voice level reduction	Classification B according to ISO 23351-1
Door	Hinged door (DIN right, DIN left)
Ventilation	Controllable, active ventilation
Climate control	No
Lighting	Basic lighting via ceiling spotlights, optionally with ambient and video lighting
Installation time (excl. transport)	under one day
Reconfiguration on the same footprint	approx. 1/2 day
Construction	Low-noise
Flexibility	All components can be reused
Fastened to the floor of the building	No
Electrics	In 3 variants
Sound insulation	Solid walls up to 43 dB, glazed sections 38 dB

Possible combinations
with the QUIET.BOX Duo and
QUIET.BOX Duo XL configured
as a block.



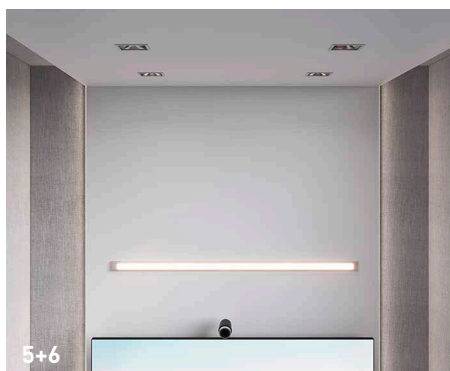
1



2



3+4



5+6

1 | CONSOLE UNIT

Cockpit feature to store hardware on one side without obstructing the view of the screen.

2 | CABLE PASS-THROUGH

to help organise tangled cables.

3 | ELECTRONIC CONTROLS

Motion detector and TFT control.

4 | ELECTRICS

In three variants.
Conference: 2x mains power, 1x HDMI, 1x USB
Work: 1x mains power, 1x USB
Talk: 1x mains power

5 | BACKGROUND LIGHTING

Indirect lighting for shadow-free face illumination.

6 | FRONT LIGHTING

for perfect front lighting during video conferences.