

ACCESSORIES

# PRODUCTIVITY BEGINS WITH THE RIGHT ACCESSORIES



# Accessories for all working environments. As flexible as you are.

As modern working environments change, so too do the demands placed on individual workstations. Mobile devices, changing uses, and individual working styles require flexible and well-organized solutions. Order, functionality, and a clear structure are becoming decisive factors for efficient working.

The selected accessories complement the furniture from König + Neurath perfectly and fit harmoniously into existing workplace and room concepts. **They support workflows, ensure clarity, and contribute to a tidy, professional appearance.**

See for yourself!



# CLEAN DESK

**PERFECT FOR YOUR "NEW WORK" CONCEPT WITH FLEXIBLE WORKPLACES.** A structured workspace creates clarity and ensures a smooth working day. The Clean Desk Organizer keeps all your important items such as your laptop, documents, pens, or water bottle in their place, neatly stored and always within reach. It is the ideal solution, especially for flexible working models without a fixed workplace. With the Clean Desk Organizer, you can conveniently take all your personal work materials with you from desk to desk – everything stays together, organized, and ready to use.



**X-LARGE**  
front view



**X-LARGE**  
back view



**X-LARGE**  
with strap, front view



**X-LARGE**  
with strap, back view

# CLEAN DESK ORGANIZER



**MATERIAL**  
The Clean Desk Organizer is made of recycled felt, a special EU blend.

**1 | CLEAN DESK ORGANIZER „X-LARGE“**  
With its many storage compartments, the “X-Large” offers enough space for all important items such as a laptop, documents, water bottle, and pens. Thanks to its well-thought-out design, it is ideal for flexible workplaces and allows easy transport from desk to desk.



**2 | HIGH-QUALITY MANUFACTURING**  
The stylish carrying handle made of high-quality felt impresses with its pleasant feel and robust quality.

**3 | CARRYING STRAP**  
For the “X-Large” version, a flexible carrying strap can also be installed, which is ideal for quickly changing desks.

**4 | ORDER ON EVERY DESK**  
The well-designed interior compartments allow you to stow away all your important items in no time at all. There’s plenty of room for your mouse, water bottle, and other essentials.



**5 | SAFE TRANSPORT**  
The integrated zipper allows you to safely store all your smaller items.

## USAGE AND FEATURES



**X-LARGE ORGANIZER with strap**  
**W: 500 mm H: 250 mm D: 200 mm**

Suitable for 600 mm deep lockers.

With shoulder strap, small felt carrying handles, additional felt base plate, 4 large pockets, 1 bottle holder, 2 laptop pockets, 1 zippered compartment, felt handles, external business card pocket.



**X-LARGE ORGANIZER**  
**W: 500 mm H: 250 mm D: 150 mm**

Suitable for 600 mm deep lockers.

Felt carrying handles 57 cm long, additional felt base plate, 3 interior compartments, 1 bottle holder, 1 elongated interior compartment, 2 exterior compartments, 1 exterior zipper compartment, exterior business card compartment.



**STANDARD ORGANIZER**  
**W: 430 mm H: 210 mm D: 150 mm**

Suitable for 500/600 mm deep storage cabinets.

Felt carrying handles 57 cm long, additional felt base plate, 3 interior compartments, 1 bottle holder, 1 elongated interior compartment, 2 exterior compartments, 1 exterior zipper compartment, exterior business card compartment.



**SMALL ORGANIZER**  
**W: 380 mm H: 250 mm D: 150 mm**

Suitable for 450/500/600 mm deep storage cabinets.

Felt carrying handles 57 cm long, additional felt base plate, 3 interior compartments, 1 bottle holder, 1 elongated interior compartment, 2 exterior compartments, 1 exterior zipper compartment, exterior business card compartment.

# STOW AWAY AND STORE

**EFFICIENT AND TIDY: SMART STORAGE SPACE FOR THE WORKPLACE.** Sufficient storage space at the workplace is crucial for creating an orderly and efficient environment. With clever solutions such as mobile storage, well-designed drawer solutions, and practical desk organizers, the workplace remains free of clutter and important items are always within reach. A smart storage solution not only promotes organization, but also a pleasant and productive working atmosphere.



PERSONALBOX



TOOLBOX




STORAGE BOX



FELT ORGANISER

# PERSONALBOX

**1 | PERSONALBOX**  
Multifunctional use as storage space and seating (with mobile frame on casters and non-slip upholstered cover).



**MATERIAL**  
The PERSONALBOX in black is sustainably manufactured from 88.4% recycled plastic. (ABS/PA6 GF30-Recyclat).



1



2



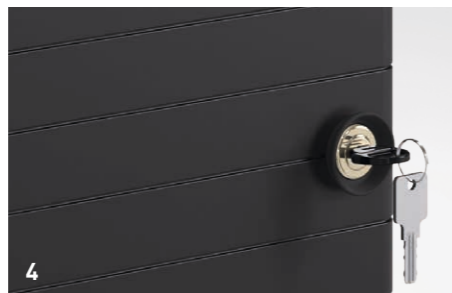
2



3

**2 | CONNECTION TO TABLETOP**  
The box can be attached to the left or right of a 25 mm panel using a console adapter. The adapter set is included in delivery. The box can be rotated 180° and can therefore be mounted on either side.

**3 | SETUP OPTIONS**  
Optional interior features include key and cell phone holders.

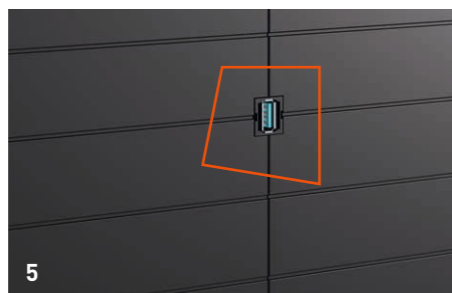


4



4

**4 | LOCKING SYSTEMS**  
The door closes with a soft-close mechanism. It can be equipped with a replacement cylinder or combination lock on request.



5

**5 | KEYSTONE**  
The connector system for plug connectors can be supplied with the additional USB-A 3.0 Key Stone configuration option.

# TOOLBOX



1

**1 | FUNCTIONAL TOOLBOX**  
The Toolbox, made of sturdy plastic, is ideal for seminar rooms and workshop situations. Pens and other materials remain neatly stored and can be easily removed at any time.



2



3

**2 | STORAGE**  
With external dimensions of 324 x 161 x 120 mm (WxDxH), it is compact but spacious enough for all your essential work tools.

**3 | SIMPLE HANDLING**  
The well-thought-out design with a practical carrying handle ensures particularly easy and functional handling.



4



4

**4 | CUP INSERTS**  
The removable cup inserts allow for flexible storage of small utensils and are available in black or gray, while the Toolbox itself is available in black or white.



4

# STORAGE BOX

# PEN HOLDERS

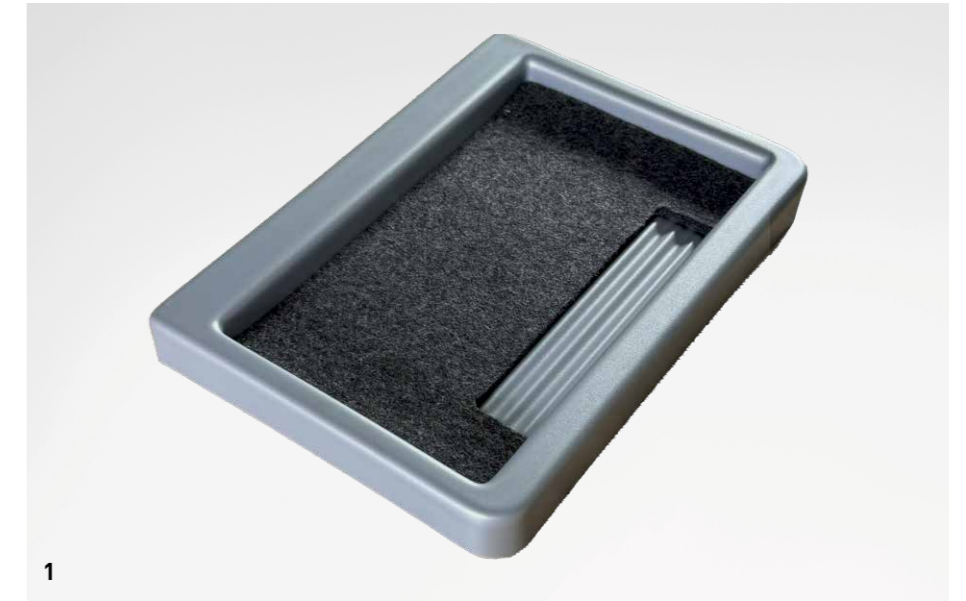
## 1 | STORAGE BOX

Versatile storage solution for any office. Ideal for keeping office supplies and personal items organized. Can be combined with all storage solutions and table systems.  
Dimensions: 310 x 372 x 151 mm (WxDxH)



## 1 | PRACTICAL PEN HOLDER

The plastic under-desk drawer provides practical storage space under the desk for smaller items. An integrated felt insert keeps the contents securely in place and ensures that nothing slips when opening and closing. Measuring 300 x 25 x 215 mm (WxDxH), it fits into any workplace concept in a space-saving manner.



## 2 | SAFELY STORED

With its integrated lock, it is ideal for storing confidential documents or valuables.

## 3 | MOUNTING RAILS

For mounting under a tabletop or shelf, available with or without placeholder.

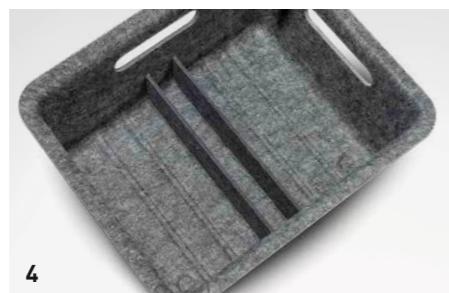


## 2 | SAFELY STORED

The flat design with cleverly designed pen slots makes it easy to store pens, tablets, cell phones, or wallets—everything stays handy and tidy. Available in grey and white.

## 4 | SEPARATORS

Optionally available with versatile dividers for practical and customized organization of the Storage Box.



## 5 | FALSE FLOOR

The practical intermediate shelf, which can be used flexibly and combined with the dividers, allows you to create a customized and flexible organization system in every Storage Box.



## 6 | MORE STABLE FOOTING

The practical nubs under each Storage Box ensure a secure footing on any surface.



# FELT ORGANIZER AND UTENSIL DRAWER

## 1 | FELT ORGANIZER

Multifunctional storage space. Perfect for storing small items such as smartphones, tablets, and stationery. Practical installation directly under the tabletop.



1



2

## 2 | MINIMALIST DESIGN

With its elegant design in dark gray and light gray, it blends harmoniously into almost any interior. Thanks to a load capacity of one kilogram, it offers space for all your important small items. Dimensions: 388 x 30 x 320 mm (WxHxD).



### MATERIAL

Felt made from 100% recycled polyester fibers



3

## 3 | UTENSIL DRAWER

Smooth-running ball bearing guides and concealed rails ensure gentle gliding. The optional cylinder lock and integrated locking mechanism offer additional security. With a load capacity of 20 kg, the drawer is perfect for storing all your important items. The internal dimensions are 332 x 38 x 288 mm (WxHxD), offering plenty of space for structured storage.

# UNDER-SHELF DRAWER



1

## 1 | LOCKABLE UNDER-CABINET DRAWER

The plastic under-desk drawer, available in black and white, provides practical storage space under the desk. The under-desk drawer can be attached directly under the tabletop or mounted using practical spacers.



2



2

## 2 | SAFELY STORED

The lockable lock allows you to store personal valuables such as tablets, cell phones, wallets, or other important items safely and securely.

## 3 | TIMELESS ELEGANCE

With its slim, unobtrusive design, the minimalist drawer fits seamlessly under the tabletop, creating an elegant, tidy look in the workspace.

### DIMENSIONS AND LOAD CAPACITY

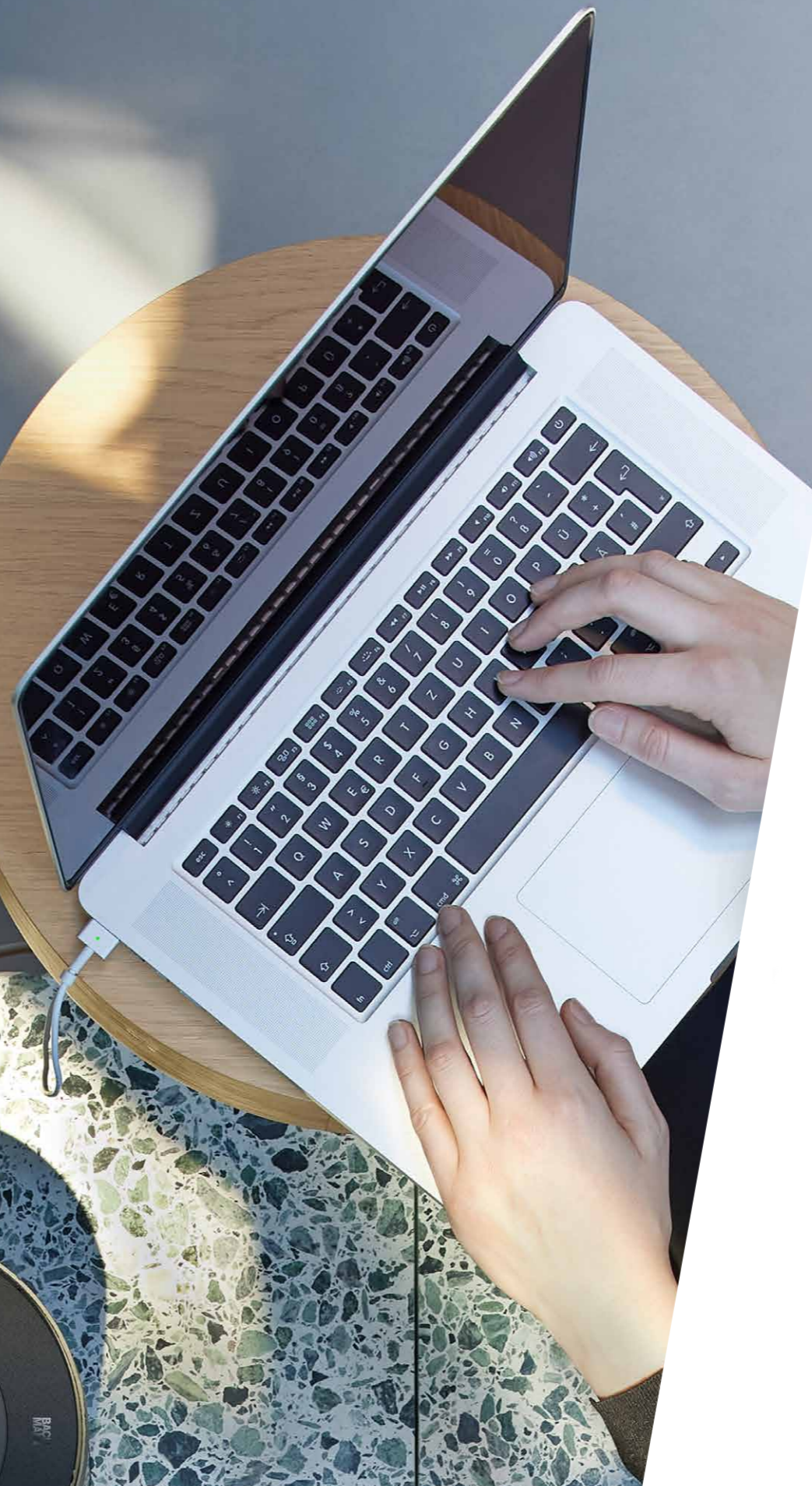
The under-sink drawer can hold up to 4 kg and, with external dimensions of 430 x 410 x 70 mm (WxDxH) and internal dimensions of 305 x 345 x 40 mm (WxDxH), offers enough space for all your important utensils.



3

# TECH ESSENTIALS

**FLEXIBLE POWER SUPPLY: PRACTICAL TECH ESSENTIALS FOR THE MODERN WORKPLACE.** Flexible electrical accessories are now as much a part of a well-organized workplace as pens and notepads. Elegant power outlets, modular power units, and mobile charging stations ensure that power connections are always available where they are needed. Thanks to adaptable and well-designed systems, laptops, smartphones, and other devices can be connected effortlessly. This keeps the workplace tidy, efficient, and ready for use at all times.



**MOV:E**  
Power Unit



**EVOLINE UP**  
Multiple outlet socket



**NETBOX SMART**



**VERSAQ**



# MOV:E POWER UNIT



1

## 1 | MOV:E POWER UNIT

If you want to be independent of building infrastructure and extension cables, MOV:E is the right choice for you. The XXL energy storage system provides enough power to operate and charge all common office devices – from laptops to digital flipcharts.

# EVOLINE UP MULTIPLE SOCKET OUTLET



1

## 1 | EVOLINE UP

The vertical electrification solution is a real space-saving miracle. The base of the vertical multiple socket can not only be screwed firmly to the floor, but can also be securely attached to any table surface and even glass using adhesive strips, and removed again without leaving any residue.



2



3

## 2 | EASY HANDLING

MOV:E impresses with its easy handling and high mobility. The user-friendly control panel allows for intuitive operation, while the ergonomic handle makes transport comfortable and easy.

## 3 | BATTERY AND OPERATING TIME

A replaceable 230 Wh lithium-ion battery with high energy efficiency of over 93% ensures a sustainable power supply. Thanks to fast charging in a maximum of 3 hours and automatic energy-saving functions, MOV:E can be used flexibly.



4



4

## 4 | MULTIFUNCTIONAL CONNECTIONS

MOV:E is equipped with various ports, including 230 V sockets, USB-A, USB-C, and DC ports, allowing multiple devices to be operated and charged simultaneously.



2



3

## 2 | MODULAR AND FLEXIBEL

A wide range of modules is available, including power outlet and data modules, which can be combined as desired. The interchangeable modules can be easily replaced at any time.

## 3 | VERSATILE CONNECTIONS

The integrated USB charger supplies cell phones, tablets, cameras, etc. with a charging current of up to 2.1 amps.

# POWER OUTLETS

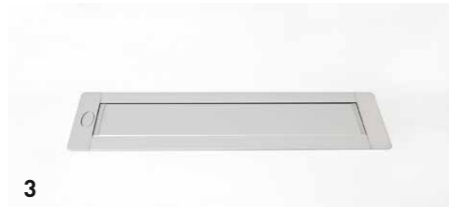
**1 | NETBOX SMART**  
 Practical socket solutions for power, data, and multimedia, ideal for everyday office use. The modular system allows for flexible configuration in accordance with international standards—both for regular workstations and conference tables.



**1 | FLEXIBLE ELECTRIFICATION SOLUTION**  
 The variable cable length offers data and multimedia connections, a rear cable entry, and compatibility with "Standard" and "GL" modules. It is made of aluminum and plastic and can be glued or clamped.



**2 | SOCKET CLAMP NETBOX SMART**  
 This is a clever holder for power outlets. It clips onto the edge of a table and the power outlet is stuck on, without any permanent installation. This means it can be moved quickly and easily from one table to another without the need for tools. Ideal for dynamic working environments and flexible office structures.



**3 | ROTARY POWER OUTLET NETBOX TURN**  
 Built-in sockets offer a space-saving and elegant power supply. The compact NETBOXES integrate inconspicuously into conference tables and remain virtually invisible thanks to a swivel mechanism or flap.



**4 | NETBOX POINT**  
 Impressive thanks to its compact and elegant design. With one power outlet and up to two USB ports, it offers a practical, space-saving solution for your office.

# VERSAQ

**1 | ASA VERSAQ**  
 The VersaQ multi-socket provides a fast internet connection without having to search for connections under the table. Thanks to its compact design, it is ideal for desks and co-working spaces and offers integrated charging functions in addition to power and data connections, for an organized and space-saving working environment.



**2 | CONNECTION OPTIONS**  
 Versatile connection options: A conventional power outlet as well as USB and USB-C ports enable multiple devices to be charged simultaneously and guarantee an efficient power supply at the workplace.



**3 | UNIVERSAL INSTALLATION**  
 The VersaQ multi-socket offers versatile mounting options: it can be attached to bevelled table edges with a C-clamp, placed freely on the table as a stand-alone solution, or mounted on or under the tabletop using adhesive tape or screws. The swivel cable entry can be adjusted up to 90° for maximum positioning flexibility.

**4 | DESIGN**  
 The VersaQ multi-socket impresses with its modern design and is available in black or white, allowing it to blend harmoniously into any office environment.

**5 | MOUNTING UNDER THE TABLETOP**  
 Can be easily attached under the tabletop, either with screws or double-sided adhesive tape.



# OFFICE CHARGER 2 AND CHARGEBOX

## 1 | OFFICE CHARGER 2

Reliably supplies every workplace with power. It charges two devices simultaneously, enables precise placement, and allows wireless charging of smartphones. Made from high-quality zinc alloy, it combines modern design with durable quality.



**Compatibility:** All iPhones from 12 and higher  
AirPods (2,3 & Pro) wireless  
**Dimensions:** 39 x 39 x 59.1 mm (WxDxH)  
**Weight:** 544 g

## 2 | ORDER WITH SYSTEM

Thanks to openings on all sides, cables can be flexibly fed in and out. This makes the CHARGEBOX easy to use and keeps your workplace tidy.



## 2 | FUNCTIONAL DESIGN

The CHARGEBOX impresses with its simple, functional design and is available in black and white. It also features a felt insert for cable passages and pre-drilled holes for easy wall mounting.  
**Dimensions:** 301.5 x 160 x 100 mm (WxDxH).

As a leading brand in the field of office furniture and room systems, König + Neurath develops solutions for individual work cultures.

König + Neurath works with specialist retailers to support its customers throughout the entire office design process. With distinctive styles, form-conscious furniture, and digital solutions, the family-owned company, founded in 1925, is helping to successfully shape the transformation of the working world.



Follow us on our social media channels

**Deutschland**

König + Neurath AG  
Industriestraße 1-3  
61184 Karben  
T +49 6039 483-0  
info@koenig-neurath.de

**Great Britain**

König + Neurath (UK) Ltd.  
Ground and Lower Ground Floor  
75 Farringdon Road  
London EC1M 3JY  
T +44 20 74909340  
london@koenig-neurath.de

**Nederland**

König + Neurath Nederland  
Beethovenstraat 530  
1082 PR Amsterdam  
T +31 20 4109410  
info@konig-neurath.nl

**Belgien/Luxemburg**

König + Neurath Nederland  
Beethovenstraat 530  
1082 PR Amsterdam  
T +32 475 270060  
koen.meyers@koenig-neurath.de

**France**

König + Neurath AG  
9 rue Ambroise Thomas  
75009 Paris  
T +33 1 44632393  
paris@koenig-neurath.de

**Schweiz**

König + Neurath (Schweiz) GmbH  
St. Gallerstrasse 106 d  
CH-9032 Engelburg / St. Gallen  
T +41 52 7702242  
st.gallen@koenig-neurath.de

