

JET.III

# A DESIGN THAT YOUR BODY UNDERSTANDS



IC0 2  
NIC 0  
AWA 1  
RDS 9

INNOVATIVE  
INTERIOR

winner

 KÖNIG +  
NEURATH

# GIVE YOUR TEAM THE SUPPORT THEY NEED



Products:  
JET.III swivel chair, ACTIVE.T double bench, ACTA.PLUS room divider shelving unit,  
QUICK.III, NET.WORK.PLACE, ACTA.PLUS lockers, HORIZONTE

Creativity and speed are just as important as flexibility in the workplace of tomorrow. What's the best way to support and motivate your employees? With furniture that allows creative and focused work.

**JET.III was designed specifically to meet user needs, and provides a variety of adjustment options.**

Not only can it be configured individually to follow the body shape, it can also be reset quickly for someone new. A task chair that supports the body contours and can be altered intuitively using just two levers.

# PERFECTION RIGHT DOWN TO THE LAST DETAIL

## NECK SUPPORT

To reduce strain on shoulder and neck muscles. It is adjustable in height and depth and can be retrofitted, also in combination with clothes hanger.

## BACKREST HEIGHT ADJUSTMENT

Quick and easy without a button.

## LUMBAR SUPPORT

Infinitely adjustable in height and depth, independently of the backrest.

## SYNCHRO MECHANISM

Seat tilt and backrest forward tilt adjustment via two-stage tilt cone (4° and 8°) and opening angle limit in 4 steps (locks in forward position).

## SYNCHRO MECHANISM

Combined quick weight-setting adjustment and seat height adjustment.

## STARBASE

Various models available. (Aluminium in various powder-coatings, chrome, polished aluminium or plastic).

## CLOTHES HANGER

Available as an option, can be retrofitted, also with neck support.

## ARMRESTS

There are five different types to choose from.

Quick weight adjustment feature

**45 – 150 KG**

A special spring arrangement ensures an optimum counter-pressure from the spectrum backrest across the full user weight (45 - 150 kg) and for every user height.



Max. load  
up to **130 KG**  
with plastic armrests\*  
up to **150 KG**  
with AL15 or  
without armrests

\* except AL43



SEAT TILT ADJUSTMENT  
VIA TILT CONE IS  
included as standard.  
Adjustable to 4° or 8°  
forward tilt.

4-8°  
cone tilt



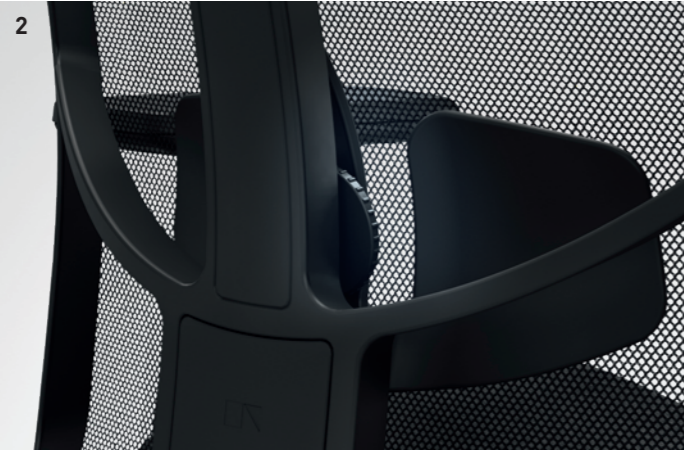
As a leading brand for office furniture and room systems, König + Neurath develops solutions for individual work cultures.

Together with specialist retailers, König + Neurath supports its customers throughout the entire process of outfitting offices. With differentiated style collections, design-conscious furniture and digital solutions, the family-owned company, established in 1925, helps its customers to adapt successfully to the changing nature of the workplace.

# DETAILS

## 1 | FOUR BACKREST STYLES

The backrest is available in fully upholstered, mesh fabric, 3D fabric or Soft upholstery.



## 2 | LUMBAR SUPPORT

Its height can be adjusted independently of the backrest, and there is also a handwheel to change the depth.



Backrest adjustment range through 80 mm in height

## 3 | TWO-COLOUR SEAT UPHOLSTERY (ZWS), second colour always black.

## 4 | BACK SUPPORT

Design feature: The König + Neurath logo and JET lettering are integrated into the backrest support.

## 5 | HEIGHT-ADJUSTMENT OF BACKREST

Quick and easy without a button.



## 6 | OPERATING INSTRUCTIONS

Integrated directly into the seat, easily accessible.

## 7 | SYNCHRO MECHANISM

The synchro-mechanism, specially developed by König + Neurath, provides an opening angle of 27° and ideal synchronous ratio of 1:2.2.

# PRODUCT OVERVIEW

## Technology

|                                        |                                                                        |   |
|----------------------------------------|------------------------------------------------------------------------|---|
| Mechanism                              | Synchro mechanism                                                      | ■ |
| Opening angle                          | 27°                                                                    | ■ |
| Synchro ratio                          | 1:2,2                                                                  | ■ |
| Quick weight adjustment                | 45 - 150 kg tested safety                                              | ■ |
| Max. load                              | 130 kg (except AL43 only 120 kg), 150 kg with AL15 or without armrests | ■ |
| Seat height adjustment                 | 420-550 mm                                                             | ■ |
| Seat depth adjustment                  | through 80 mm, in 7 steps                                              | □ |
| Seat tilt adjustment                   | via tilt cone, adjusts to 4° or 8° forward tilt                        | ■ |
| Limit to opening angle / backrest lock | 4 positions, locks in forward position                                 | ■ |
| Seat upholstery                        | Foam Standard                                                          | ■ |
|                                        | Foam Soft upholstery                                                   | □ |

## Backrest

|                                     |                                                                  |   |
|-------------------------------------|------------------------------------------------------------------|---|
|                                     | Mesh fabric                                                      | ■ |
|                                     | 3D mesh fabric                                                   | ■ |
|                                     | Upholstery on 3D mesh fabric                                     | ■ |
|                                     | Soft upholstery, black                                           | ■ |
| Height-adjustable                   | through 80 mm                                                    | ■ |
| Lumbar support                      | Height adjustable through 90 mm, depth adjustable through 20 mm  | □ |
| Neck support, can be retrofitted    | Height-adjustable through 70 mm, depth can be set in 3 positions | □ |
| Clothes hanger, can be retro-fitted | Black plastic, width 400 mm                                      | □ |

## Armrests

|                                        |                                                                                                    |   |
|----------------------------------------|----------------------------------------------------------------------------------------------------|---|
| 2D functional armrest (AL41)           | Adjustable in height and width                                                                     | □ |
| 3D multifunctional armrest (AL42)      | Adjustable in height, width and depth                                                              | □ |
| 4D multifunctional armrest (AL43)      | Adjustable in height, width and depth, pads swivel<br>Plastic armrest support                      | □ |
| 4D multifunctional armrest (AL15)      | Adjustable in height, width and depth, pads swivel<br>Polished aluminium armrest support           | □ |
| 4D Plus multifunctional armrest (AL34) | Adjustable in height, width and depth, pads swivel,<br>additional width adjustment via armrest pad | □ |

## Dimensions

|             |            |
|-------------|------------|
| Seat height | 420-550 mm |
| Seat width  | 500 mm     |
| Seat depth  | 400-480 mm |
| Back width  | 480 mm     |
| Back height | 600-680 mm |

## Colours

|               |                                                            |   |
|---------------|------------------------------------------------------------|---|
| Plastic parts | black                                                      | ■ |
| Starbase      | Black plastic                                              | ■ |
|               | Powder-coated aluminium                                    | ■ |
|               | Polished aluminium or chrome                               | □ |
| Castors       | Black or with grey running rings for hard floors           | ■ |
| Armrests      | Black plastic, armrest support polished aluminium for AL15 | □ |

■ Standard □ Optional



5 year warranty

**Deutschland**

König + Neurath AG  
Industriestraße 1-3  
61184 Karben  
T +49 6039 483-0  
info@koenig-neurath.de

**Great Britain**

König + Neurath (UK) Ltd.  
Ground and Lower Ground Floor  
75 Farringdon Road  
London EC1M 3JY  
T +44 20 74909340  
info@koenig-neurath.co.uk

**Nederland**

König + Neurath Nederland  
Beethovenstraat 530  
1082 PR Amsterdam  
T +31 20 4109410  
info@konig-neurath.nl

**France**

König + Neurath AG  
53, rue de Chateaudun  
75009 Paris  
T +33 1 44632393  
info@koenig-neurath.fr

**Schweiz**

König + Neurath (Schweiz) GmbH  
St. Gallerstrasse 106 d  
CH-9032 Engelburg / St. Gallen  
T +41 52 7702242  
info@koenig-neurath.de

**Österreich**

König + Neurath AG  
Gonzagagasse 1 / Morzinplatz  
1010 Wien  
T +43 676 4117512  
info@koenig-neurath.de

