

CONFERENCES + MEETINGS

CREATIVE SPACES. WE ORGANISE MEETINGS.



Get geared up for a new meeting culture - we'll get you ready!

The workplace is changing. A conference room used to be a static place with a representative character. Nowadays people congregate here to develop creative solutions. Communication, interaction, dynamics, atmosphere – a well-designed room can provide a platform for all those things. We can help. With functional and attractive solutions to meet the most diverse needs.

Prepare to be inspired!





AN ELEGANT ENVIRONMENT FOR HIGH-PROFILE CONFERENCES

Stylish furniture that offers maximum comfort. You can create an appropriate backdrop for important meetings with **TABLE.T** conference and our hand-crafted **AURAY** conference chairs. Distinctive design, quality materials and a luxurious feel – for people who value the special things in life.

Products:
TABLE.T conference table, AURAY high back conference chair, NET.WORK.PLACE lounge chair





CHANGE YOUR PERSPECTIVE EVERY NOW AND THEN

Convenience and mobility? It need not be a contradiction: adjust the height of the premium **TABLE.T** conference table with a single touch. This allows you to sit very comfortably with plenty of leg room – and you can switch to a standing position whenever you need a new perspective.



Products:
TABLE.T conference table,
AURAY low-back conference chair,
ACTA.MODUL storage



Height-adjustable table

An innovative touch function is integrated into the table top so that any meeting delegate can adjust the height conveniently. All they have to do is touch the profile from underneath.



Products:
TALO.S conference table, OKAY.II visitor chairs, ACTA.PLUS storage, ACTA.PLUS Mobile, HORIZONTE partitions



BROAD HORIZONS CREATE SPACE FOR GROWTH

Rethink the office! Thanks to the **HORIZONTE** room-in-room solution, you can create retreat areas for private meetings and undisturbed work without the need for disruptive structural changes. Use our classic, **TALO.S** conference, to furnish your newly created spaces elegantly and flexibly.

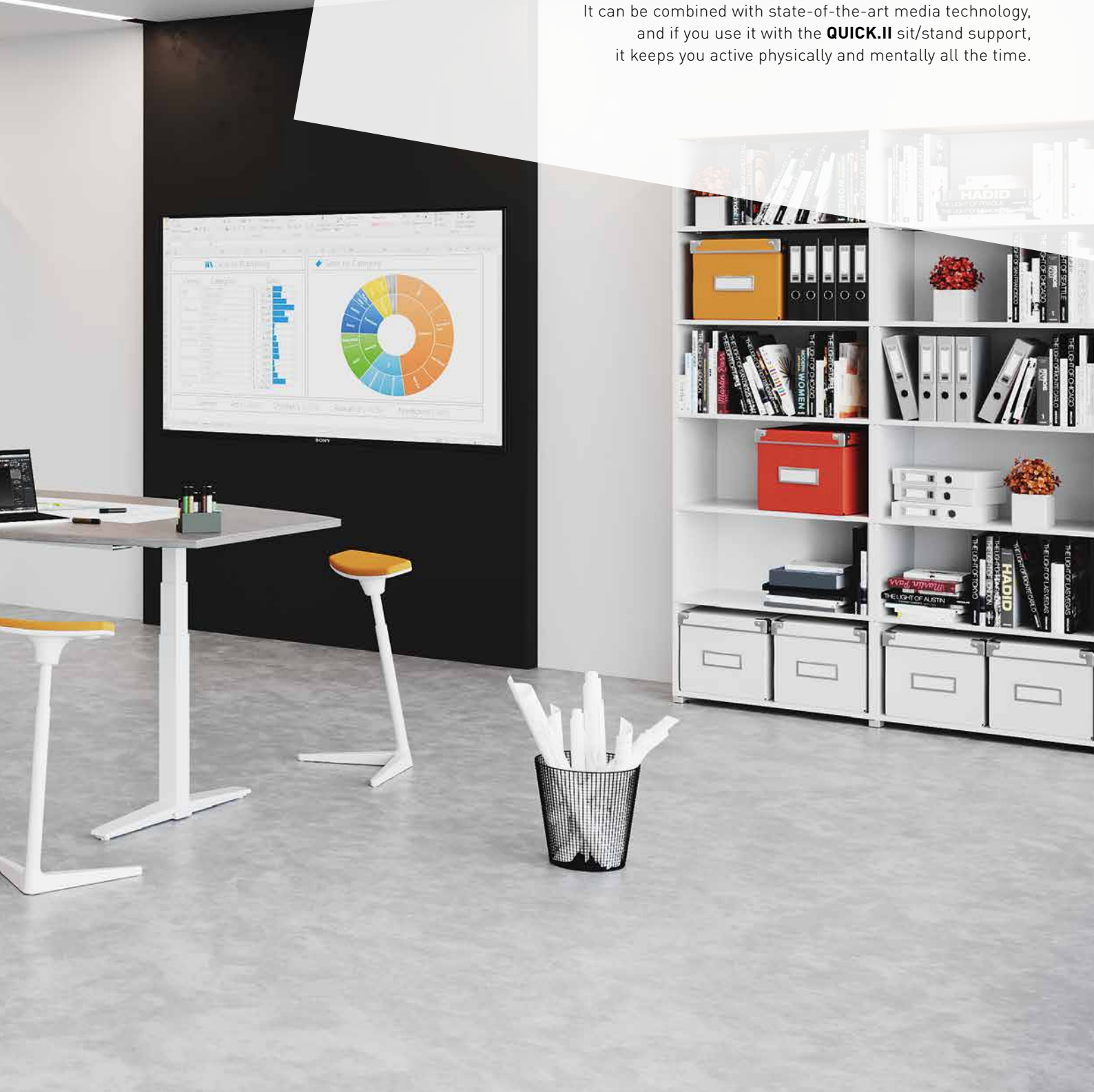


Products:

TALO.S conference table, QUICK.II standing support, ACTA.MODUL storage, INSIDE.CUBE, NET.WORK.PLACE lounge chair

SITTING? STANDING? IDEAS NEED MOTION!

Efficient meetings really call for agile furniture. **TALO.S** looks just as good whether you use it as a height-adjustable conference table or an individual workstation. It can be combined with state-of-the-art media technology, and if you use it with the **QUICK.II** sit/stand support, it keeps you active physically and mentally all the time.



A CLASSIC CONFERENCE OR PERHAPS A COSY BRAINSTORMING SESSION

Create a space in which ideas can move around freely.
LIFE.S is attractively designed to create fluid transitions
between classic conference scenarios and spontaneous
meetings. perfect for relaxed brainstorming: the modular
lounge system **NET.WORK.PLACE Organic**.



Products:
LIFE.S conference table, OKAY.II visitor chairs, NET.WORK.PLACE Organic elements





Products:
LIFE.S conference table and individual workstation, JET.II task chair and visitor chairs, ACTA.FERRO SYS storage



THE GOAL: A PLEASANT WORKING ENVIRONMENT

Office and meeting islands: a uniform design means a consistent look across a variety of office situations. With **LIFE.S** conference tables and **JET.II** cantilever chairs, you can furnish offices tastefully yet comfortably for different functions. **LIFE.S** comes across as clean and inviting in its organic form. Its four-leg frame provides plenty of legroom and space to move around.

THIS IS WHERE FUTURE STRATEGIES COME TO LIFE

Great ideas are born where clever brains come together and you can provide the right conditions: create a setting with a touch of prestige with a large table like **PLENUM.K** in an elegant boat-shaped design, which offers maximum leg room thanks to the cross beam, and the attractive **AGENDA.II** conference chairs.

Stylish electrics

The trim is an intelligent way of concealing the cables.



Products:
PLENUM.K, AGENDA.II conference chair, NET.WORK.PLACE elements



DEFINE THE FUTURE OF WORK YOURSELF

An inspiring workplace boosts performance and motivation. So **PLENUM.K** offers flexible solutions that can be customised to suit a variety of requirements: mobile, extendable and stacking tables and dynamic seating are ready to use right where they are needed.

Products:
PLENUM.K nesting table, NET.WORK.PLACE stool,
ACTA.CLASSIC lockers



COOPERATION AT ITS MOST BEAUTIFUL



If you can relax, you can be in touch with your own potential. **SUMMA** extends an invitation to visitors and colleagues to sit down at a conference table that's generously-sized and mobile. The **CHARTA** conference chairs, which are also mobile, ensure a relaxed position – perfect for inspiring yourself and others!



Products:
SUMMA conference table, CHARTA conference chair, ACTA.PLUS Mobile

ADVANCED THINKING ADVANCED LEARNING KNOWLEDGE SHARING

Be dynamic and inspired! Interaction fosters creativity, you see. Our solution, which is perfect for any type of training session or presentation, is **MOVE.ME**. The programme is designed to be agile, ideal for temporary uses and suitable for any situation in the workplace.





Products:
MOVE.ME table and chairs



Your flexible project team:
the tables and chairs in the MOVE.ME range have lightweight wire frames. The tables will fold, stack and extend, while the chairs can be stacked to save space.

THE MOST UNDERRATED ROOM THE KITCHEN!

All kinds of subjects come up in the coffee corner. So it's a good idea to set up informal meeting areas to appear positive and inviting – to allow scope for spontaneous discussion. **TABLE.H** is great for quick chats on the go – and you can always perch on the **MOVE.MIX** bar stools if you need to stay a little longer.

Products:
TABLE.H meeting table, MOVE.MIX bar stools, INSIDE.50 screen, HORIZONTE partitions



Ingenious cable management
The main power supply is concealed inside a fabric cable sleeve.

BRING SEMINARS TO LIFE

If you know more, you can move more. You can furnish seminar rooms flexibly with **MEMO.S** stacking tables. **MEMO.S** is not only linkable, it also has a fold-away leg frame to save space in storage. Pair this with the **JET.II** stacking chairs on castors for the perfect training team.

Equipped for any training scenario: tables are linked together with top connectors – no need for tools.





Products:
MEMO.S meeting table, JET.II on castors, NET.WORK.PLACE stool

“The first step towards a better work culture is the choice of the correct furniture”

TABLE.T
TALO.S
LIFE.S
PLENUM.K
SUMMA
MOVE.ME
TABLE.H
MEMO.S

CONFERENCE AND MEETING SOLUTIONS

1 | TABLE.T

Smart-looking conference tables. Perfectly constructed and available in many sizes, shapes and materials.



1

2 | TALO.S

An established range. TALO.S is characterised by its geometric design and versatile electrics options.



2



3



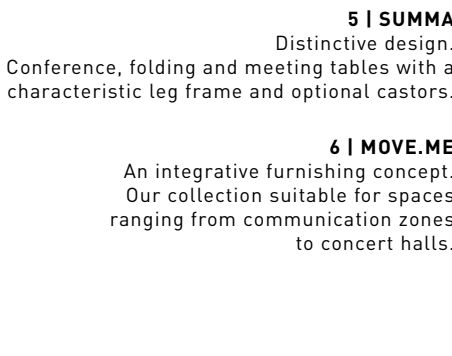
4

3 | LIFE.S

Attractive price-performance ratio. Different frame and material variants, as well as accessories, are available.

4 | PLENUM.K

Looks to reflect status. The conference system range features a variety of electrics and configuration options.



5 | SUMMA

Distinctive design. Conference, folding and meeting tables with a characteristic leg frame and optional castors.

6 | MOVE.ME

An integrative furnishing concept. Our collection suitable for spaces ranging from communication zones to concert halls.



5



6



7



8

7 | TABLE.H

The feel-good programme. A homely feel that's equally suitable for offices in the workplace or at home, with an impressively wide range of variants.

8 | MEMO.S

Flexible and mobile. Stacking table frames with fold-away legs and locking castors.

Expectations of desks and conference tables these days are far higher than they used to be:

they are compatible with state-of-the-art media technology, variable in height and can be designed specifically to suit your needs. We support you in the planning of your offices and work spaces – and deliver solutions that are not just cleverly conceived, they are also designed from the heart. Quality made in Germany.

Programme overview	Static conference form		Dynamic conference form			Electrics	Dynamic working	Areas of application	
	Single desk	Desk system	Folding table	Nesting/ fold up	Mobile	Cable management	Seat height	Multi-purpose rooms	Meeting, conference, seminar rooms
TABLE.T	■	■				■	■		■
TALO.S	■	■				■	■		■
LIFE.S	■	■				■	■		■
PLENUM.K	■	■		■	■	■		■	■
SUMMA	■		■		■	■			■
MOVE.ME	■			■		■		■	■
TABLE.H	■					■	■		■
MEMO.S	■			■	■	■		■	■

SEATING OPTIONS

AURAY



CHARTA



OKAY.II



JET.II



PUBLICA



MOVE.ME



SELECTION FABRICS AND COLOURS

AGENDA.II



LEATHER 50



50 | LC



50 | LT



50 | LW

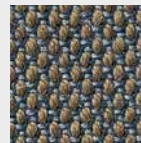


50 | LS

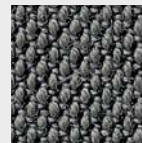
QUICK.II



PREMIUM 49



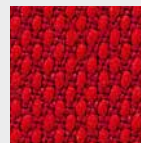
49 | 29



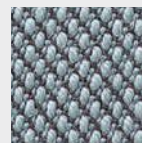
49 | 52



49 | 75



49 | 69



49 | 48



49 | 31

MOVE.MIX bar stool

PUBLICA bar stool



ELECTRICS



1 | INTELLIGENT SOCKET

Rotating electrics with 3, 4 and 5-gang options.

2 | VARIABLE ELECTRICS

Choose from all the usual electrics variants.

3 | EASY-ACCESS CABLE COVER

The cover opens from both sides, and can be accessed from either side.

4 | INTEGRAL CABLE COVER

The integral cable cover features variable sockets.

5 | DROP-DOWN ELECTRICS

The socket unit is concealed elegantly in the desk top, and is suitable for use with all carcass-design furniture.

6 | VERSATILE SOCKET

The desk top sockets clip flexibly onto the table, and can accommodate several connections.

7 | ELEGANT CABLE DUCT

The cable grommet is made of anodised aluminium.

8 | PRACTICAL CABLE OUTLET

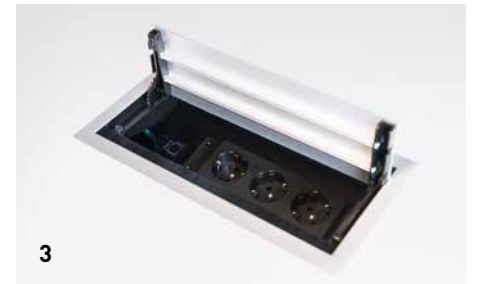
Functional and understated: the plastic grommet.

9 | TIDY SOLUTION

This flexible cable clip bundles up to eight cables together under the table top.

10 | ORGANISED CABLE MANAGEMENT

Cable management for up to five cables, mounted flexibly under the desk.



SURFACES

DESK TOP SURFACES

FRAME COLOURS

MELAMINE SOLID COLOUR	PATTERNED LAMINATE	VENEER	FENIX	POWDER-COATED METAL	CHROME/POLISHED ALUMINIUM
 GK Grey	 AA Acacia	 AH Canadian maple unstained	 7V Fenix black	 AL Aluminium coloured	 GC Chrome
 GW Off-white	 AO Maple	 BH Beech natural	 7M Fenix white	 AM Anthracite metallic	 6M Matt chrome
 KH Light grey	 ET Oak natural	 EN Oak natural	 7J Fenix dark grey	 GK Grey	 AP Polished aluminium
 KT Aluminium coloured	 MB Beech	 CK American cherry	 7I Fenix dark beige	 GW Off-white	
 UM Melange	 NM Walnut	 SN American walnut natural		 KH Light grey	
 WI Pure white	 UL Elm			 KS Black	
				 WI Pure white	
				 PK Metal clear varnish	

PRODUCT OVERVIEW



TABLE.T

*3, 4, 5, 6



TALO.S

*3, 4, 5, 6



LIFE.S

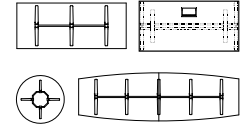
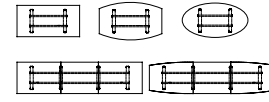
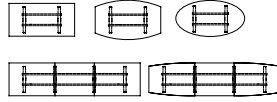
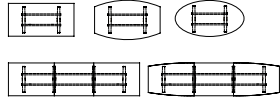
*3, 4, 5, 6



PLENUM.K

*3, 4, 5, 6

Selection of desk top configurations



Symmetrical T-leg

Symmetrical T-leg

Symmetrical T-leg
A-leg
4-legged frame

T-leg, chrome,
steel beam with support

Dimensions

	TABLE.T	TALO.S	LIFE.S	PLENUM.K
Widths	1200 mm, 1400 mm, 1600 mm, 1800 mm, 2000 mm, 2200 mm, 2400 mm	1200 mm, 1400 mm, 1600 mm, 1800 mm, 2000 mm, 2200 mm, 2400 mm	1200 mm, 1400 mm, 1600 mm, 1800 mm, 2000 mm, 2200 mm, 2400 mm	In 200 mm increments (nestling table) In 400 mm increments (stand-alone tables) In 800 mm increments (free-standing configurations)
Depths	800 mm, 1000 mm, 1400 mm, 1600 mm	800 mm, 1000 mm, 1200 mm, 1400 mm, 1600 mm	800 mm, 1000 mm, 1200 mm, 1400 mm, 1600 mm	800 mm, 1000 mm (nestling table) 900 mm, 1000 mm, 1200 mm (stand-alone tables) 1000 mm (free-standing configurations)

Height adjustment

	TABLE.T	TALO.S	LIFE.S	PLENUM.K
Fixed	750 mm ■	750 mm ■	750 mm ■	750 mm ■
Height-adjustable	Easy-height-adjust mechanism 662 – 902 mm <input type="checkbox"/> Standing height with motorised adjustment from 662 – 1262 mm <input type="checkbox"/> Motorised height adjustment (touch function) 662 – 1150 mm <input type="checkbox"/>	Easy-height-adjust mechanism 662 – 902 mm <input type="checkbox"/> Standing height with motorised adjustment from 662 – 1262 mm / 650 – 1250 mm <input type="checkbox"/>	Standing height with motorised adjustment from 680 – 1180 mm and 650 – 1250 mm <input type="checkbox"/> Four-legged frame with fixed height of 732 mm / 720 mm <input type="checkbox"/>	-

Worktop

	TABLE.T	TALO.S	LIFE.S	PLENUM.K
Wood-product panel Décor	25 mm top with edge-banding ■	25 mm top with edge-banding ■	25 mm top with edge-banding ■	25 mm top with edge-banding ■
Wood-product panel Verneer	13 and 25 mm top with edge-banding ■	13 and 25 mm top with edge-banding ■	13 and 25 mm top with edge-banding ■	13 and 25 mm top with edge-banding ■
Glass top	-	-	-	12 mm top, clear or opal glass, laminated, with matt foil (only for single desks and free-standing configurations) ■

Electrics

	TABLE.T	TALO.S	LIFE.S	PLENUM.K
Horizontal	Cable tray <input type="checkbox"/>	Cable tray <input type="checkbox"/>	Cable tray <input type="checkbox"/>	Cable tray <input type="checkbox"/>
Vertical	Cable tray <input type="checkbox"/>	Cable tray <input type="checkbox"/>	Cable tray <input type="checkbox"/>	Cable tray <input type="checkbox"/>



SUMMA

*1, 3, 4, 5, 6



MOVE.ME

*1, 2, 3, 4, 5, 6



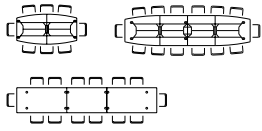
TABLE.H

*3, 4, 5, 6

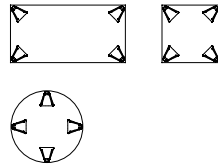


MEMO.S

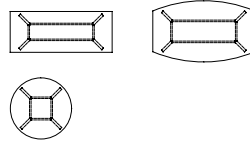
*1, 2, 3, 4, 5, 6



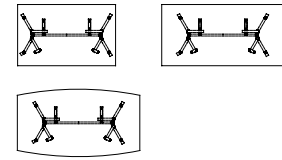
Free-form frame/Fixed/Folding frame



Wire frame



Real wood frame



Nesting frame

1200 mm, 1600 mm, 1800 mm, 2000 mm
Fixed/Folding frame: 2400 mm, 2800 mm, 5000 mm

1400 mm, 1600 mm (folding table),
Ø 1000 mm (round canteen table),
800 mm, 1000 mm (square canteen table),
1600 mm, 2000 mm (rectangular canteen table on wire frame)

1600 mm, 1800 mm, 2000 mm, 2200 mm

1600 mm, 2000 mm

800 mm, 1000 mm
Fixed/Folding frame: 900/1200 mm, 1000 mm

700 mm, 800 mm

800 mm, 900 mm, 1000 mm

800 mm, 900 mm, 1000 mm

720 mm

732 mm

732 mm

720 mm

25 mm top with straight edge with 3 mm ABS edge-banding

13 and 25 mm top with edge-banding

25 mm top with edge-banding
25 mm top with edge-banding and 15° undercut, real wood edging

25 mm top with edge-banding

MDF board, 25 mm, edge 45°, undercut with edge-banding

-

25 mm top with edge-banding
25 mm top with edge-banding and 15° undercut, real wood edging

25 mm top with edge-banding

Cable tray

Clip-on desk top socket

Cable tray

Rotating electrics set

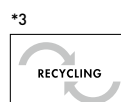
Cable chain

Cable duct

Cable duct

-

■ Standard
□ Option





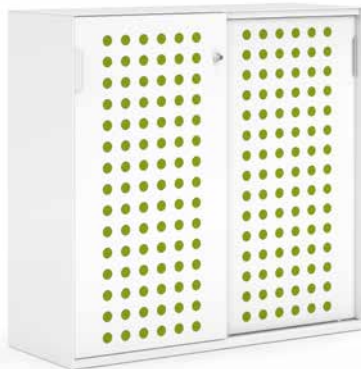
NET.WORK.PLACE Organic
For creating communication
areas within the office.



NET.WORK.PLACE Lounge Chair
Personal haven for distraction-
free communication or simply
a place to unwind.



ACTA.FERRO SYS
Storage space elements
Steel storage system
minimises background
noise and adds stylish
highlights.



ACTA.PLUS lockers
Storage options in mobile
working environments.



INSIDE.CUBE
Sophisticated and stylish
room-in-room solutions.



ACTA.MODUL
A variety of modular storage elements
to keep everything tidy in style.

As a leading brand for office furniture and room systems, König + Neurath develops solutions for individual work cultures

Together with specialist retailers, König + Neurath supports its customers throughout the entire process of outfitting offices. With differentiated style collections, design-conscious furniture and digital solutions, the family-owned company, established in 1925, helps its customers to adapt successfully to the changing nature of the workplace.



Deutschland

König + Neurath AG
Büromöbel-Systeme
Industriestraße 1-3
61184 Karben
T +49 6039 483-0
info@koenig-neurath.de

Great Britain

K + N International
(Office Systems) Ltd
52 Britton Street
London EC1M 5UQ
T +44 20 74909340
info@koenig-neurath.co.uk

Nederland

König + Neurath Nederland
Office Furniture
Beethovenstraat 530
1082 PR Amsterdam
T +31 20 4109410
info@konig-neurath.nl

France

König + Neurath AG
Showroom Paris
66, rue de la Victoire
75009 Paris
T +33 1 44632393
info@koenig-neurath.fr

Schweiz

König + Neurath (Schweiz) GmbH
Büromöbel-Systeme
St. Gallerstrasse 106 d
CH-9032 Engelburg / St. Gallen
T +41 52 7702242
info@koenig-neurath.de