

# ACTA.PRO

## AT LAST THERE'S A SYSTEM FOR CHANGE

**Lockable bar cabinet** with  
downward opening flipper door.

**Sliding rear panel** made  
from powder-coated  
expanded metal.  
Whiteboard also available.



The free-standing shelving combination provides storage,  
partitioning and structure. It can be supplied with **coloured acrylic  
glass** or **sustainable PET felt**.



**Locker modules** are  
available in various  
heights:  
1 FH, 2 FH, 3 FH and 4 FH.

Our **shelving combination with lockers** provides flexible storage.  
The melamine-faced carcasses are easy to fit between the ladder  
frames, and can be removed and repositioned again as required.

With **square or round  
tube frame** for flexible  
space zoning.



Whether you need **height transitions, space zoning for a corner  
configuration, or versatile outfitting options with cupboard modules** –  
with ACTA.PRO you have unlimited flexible planning  
and configuration potential.



# ONE SYSTEM – COUNTLESS OPTIONS

**DESIGNER PLANTER**  
In various sizes in an organic design, to improve the indoor climate.



**FLEECE**  
Made from recycled PET in a choice of light grey or dark grey.



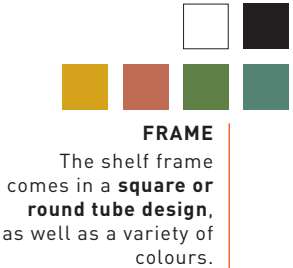
**ACRYLIC GLASS**  
Available in transparent white, green and orange.



**SHELVES AND CARCASSES**  
Choose from standard wood-effect designs and colours to match the frame.

**SHELF CONNECTION**  
In various designs.

**SLIDING FRONTS**  
Felt made from recycled PET, pinnable and used for visual screening, expanded metal or whiteboard for workshops and agile working scenarios.



**FRAME**

The shelf frame comes in a square or round tube design, as well as a variety of colours.

**WORK-TOP**

**SEAT PAD**

**LOCKER MODULES**  
Can be integrated into the shelf frame, a wide range of colours and a selection of lock variants are available.

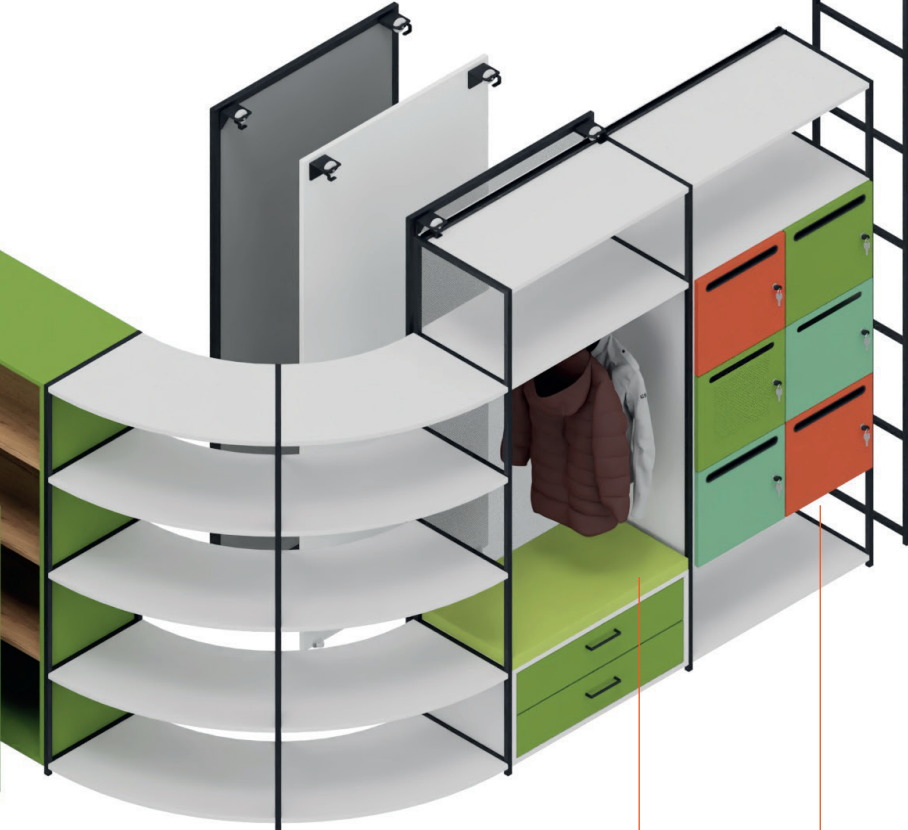
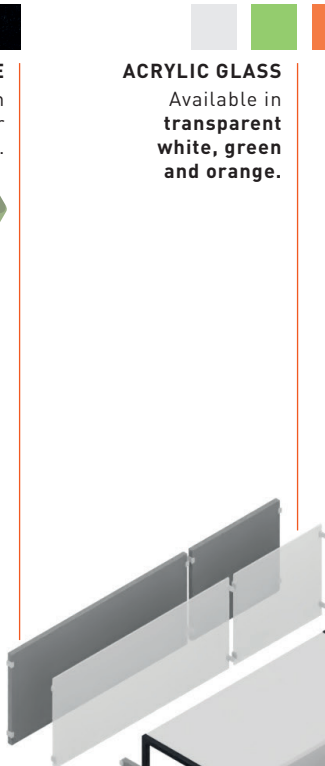
**CATERING TROLLEY**  
Available in two sizes.



**CARCASS**  
Made from recycled PET felt. Glazed display modules are optionally available too.

**CATERING BOX**  
With felt insert or watertight ABS plastic tray.

**PLANTER TOP BOX**





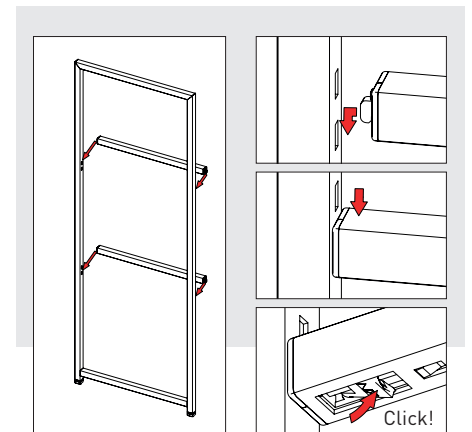
# ACTA.PRO INFOCARD

Welded steel frame, with crosspieces	■
Height incl. adjustable feet	405 mm (1 FH'), 780 mm (2 FH'), 1155 mm (3 FH'), 1530 mm (4 FH'), 1905 mm (5 FH'), 2280 mm (6 FH')
Widths	400 mm, 800 mm
Depths	Square design: 430 mm, Round design: 450 mm
<b>Modules</b>	
Shelves	■
Shelf connection inserts	□
Reinforcement element	■
Infill element	□
Worktop	□
Planter box, designer planter, catering box	□
Wardrobe rail	□
PET felt carcass with hinged door	□
<b>Carcass elements</b>	
Shelf element, hinged door element, display element with a glazed front	□
Cupboard with double drawer	□
Flipper element, sliding door element, locker element	□
<b>Sliding front</b>	
PET felt	□
Expanded metal	□
Whiteboard	□
<b>Accessories</b>	
Storage box, bookend	□
Catering trolley	□

■ Standard □ Optional 'FH' = Filing height



**1 | CLICK-CONNECTION TECHNOLOGY**  
To connect ladders and crosspieces.



**THE SYSTEM THAT CLICKS TOGETHER**  
The straightforward click system makes assembly and dismantling quick and easy. Shelves and cupboard carcasses are simply bolted onto the crosspieces.



## 2 | INFILLS

Made from recycled PET felt or coloured acrylic glass, tool-free clip-in fitting in variable configurations. Mix and match materials according to preference.



## 3 | CLOSED HINGED DOOR ELEMENT

Made from PET felt, practical single-part design that can be fitted between two ladders. Openings facilitate handling.



## 4 | STORAGE BOX

Made from PET felt, with variable positioning options, can either be fitted under a shelf or alternatively placed directly on the shelf. Optionally lockable.



## 5 | PLANTER

With integral plastic tray.