

# QUIET.BOX Duo and QUIET.BOX Duo Organic PEACE AND QUIET FOR TWO

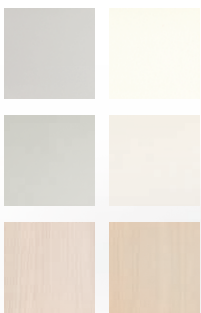
**VOICE LEVEL  
REDUCTION**  
Classification A  
according to  
ISO 23351-1

**BUILT-IN LED**  
for uniform illumination

**DOOR HINGES**  
3D-adjustable in silver,  
optional in white or black

**REAR WALL**  
Plastic/melamine, fabric or  
fixed glazing

**SOLID SURFACES**  
choose from the K+N fabric  
collection MFC (in plain and  
decorative finish)  
Acoustic insulation level  
Rw 42 dB



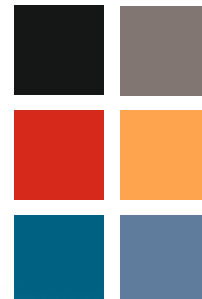
**SEAT UPHOLSTERY**  
choose from the K+N fabric  
collection



**CONTROL/ACCESSORIES**  
Customised equipment  
as required



**PROFILES**  
Available in a  
selection of colours,  
including RAL colours



**TEXTILE INSIDE  
SURFACES**  
for an ideal interior  
acoustic choose from the  
K+N fabric collection  
(Economy 13 and 71,  
Standard 22, 28, 201,  
202, 203, 901 and 902,  
Comfort 33 and 92 or  
Premium 42, 43 and 44)

**ACOUSTIC GLAZING**  
with acoustic insulation level  
Rw 38 dB. Door Rw 37 dB  
(optional DIN right/DIN left)



# QUIET.BOX Duo and QUIET.BOX Duo Organic INFOCARD



**INTERNAL VARIANT 1**  
NET.WORK.PLACE bench and side table



**INTERNAL VARIANT 2**  
Mini-office for focused working



**INTERNAL VARIANT 3**  
QUICK.III and side table



**QUIET.BOX Duo Organic**  
version with rounded corners

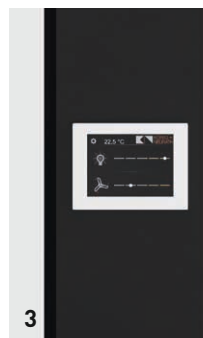
|                                       |  |
|---------------------------------------|--|
| Size                                  | 2,200 x 1,200 x 2,226 mm   |
| Required room height                  | 2,400 mm   |
| Ceiling                               | Acoustic ceiling in fabric   |
| Wall configuration                    | Unrestricted design  |
| Absorption (echo)                     | Yes  |
| Voice level reduction                 | Classification A according to ISO 23351-1                            |
| Door                                  | Hinged or sliding door   |
| Ventilation                           | Controllable, active ventilation                                     |
| Climate control                       | No   |
| Lighting                              | Built-in and pendant lights are available                            |
| Glass modules                         | Large areas  |
| Floor                                 | Does not have its own floor, barrier-free (Optional floor available) |
| Installation time (excl. transport)   | 3 –4 hours   |
| Reconfiguration on the same floor     | 3 hours  |
| Construction                          | Noisy  |
| Flexibility                           | All components can be reused   |
| Fastened to the floor of the building | No   |
| Wire management                       | Electrical post in the centre of the rear wall                       |
| Sound insulation                      | Solid walls up to 43 dB, glazed sections up to 38 dB                 |



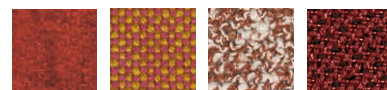
1 + 2



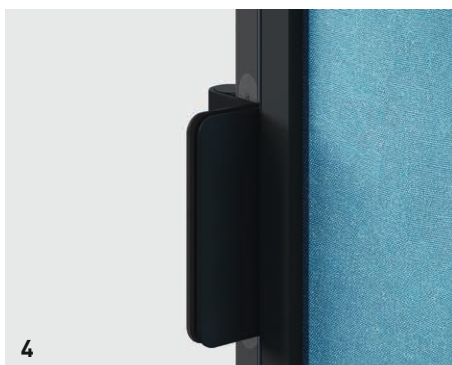
3



3



**1 | FABRIC CEILING**  
Acoustic properties



4



5

**2 | CEILING TRIM PROFILE**  
Neat covering for ceiling structure and concealed technology

**3 | OPERATING CONSOLE**  
Light and ventilation switches as standard version or available with touch function

**4 | DOOR HINGES**  
3D-adjustable in silver, optional in white or black

**5 | FLOOR CONNECTION**  
Flush-level entry, barrier-free.