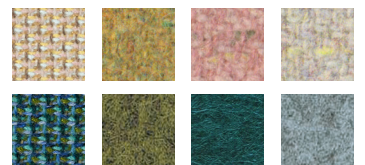


# PUBLICA CLEAR LINES FOR EVERY OCCASION.



**SEAT AND BACKREST**  
upholstered, unupholstered or  
fully upholstered - depending  
on the model.



**SHELL**  
Plastic in various designs -  
depending on model  
in white or black.



**OPTIONAL**  
row linking  
and / or armrest.

**FRAME COLOUR**  
chrome, white, black,  
aluminium-coloured,  
anthracite metallic.

Tested for a  
load capacity  
of up to 110 kg

**GLIDERS**  
in black for carpet  
or hard floors.



# PUBLICA INFOCARD

	Stacking chair	Bar stool
Frame	Rectangular steel tube, stackable up to 15 chairs	Rectangular steel-tube, 4-legged frame
Shell	- Plastic black or white - Upholstered / Seat cushion / Seat and backrest upholstery or fully upholstered	- Beech varnished white or black - Upholstered / Seat cushion / Seat and backrest upholstery
Seat height	420 / 430 mm	790 mm
Seat width	435 mm	385 mm
Seat depth	460 mm	430 mm
Spine width	425 mm	370 mm
Gliders	black	black
Options	- Armrests - Hinged shelf left or right - Series linking - Square and row numbering	

**EXTENSIVE PRODUCT FAMILY**  
Matching addition: bar stool and conference chair.



## 1 | STRAIGHT ARMREST

Chrome or powder-coated, regardless of frame colour. Armrest in black as standard, alternatively in wood.



## 2 | CONCATENATION AND NUMBERING

Can be linked with and without armrests, the row and seat numbering is easy to easily inserted.

## 3 | BRACKET ROW CONNECTION

For linking chairs with two armrests.

## 4 | FOLDING SHELF

Optional retrofittable shelf on the left or right side of the frame. Swivel shelf outwards for stacking.

## 5 | SPACE-SAVING

Stackable up to 15 chairs and mobile with stacking trolley.

