

# HUG.Y SUSTAINABLE OFFICE FURNISHINGS



## BACK

Distinctive plastic backrest made from CO<sub>2</sub> neutral production

Mesh (fabric group 12) made from 77% polyester, 23% recycled post-consumer polyester.



## THE BACK

The plastic back is manufactured 100 % CO<sub>2</sub> neutral production.

## ARMREST

Three different types of armrests available.

## LUMBAR SUPPORT

Height-adjustable and available as an option.

## SEAT PAD

Also available as a fully-upholstered option. The seat can be replaced quickly and easily.

## SYNCHROMAT

Automatic weight setting with fine adjustment.

## STAR BASE

Black plastic made from 100 % post-industrial recycle.

## OPTIONAL

delivery in component form, boxed.



Ergonomie  
Fertigung  
überwacht  
www.kn.com  
ID: 11104407



KÖNIG+  
NEURATH

# HUG.Y INFOCARD



**Three types of armrest to choose from:**  
A height-adjustable functional armrest (A), a 3D multifunctional armrest (B) and a 4D Plus multifunctional armrest (C) which meets the Dutch NPR guidelines.

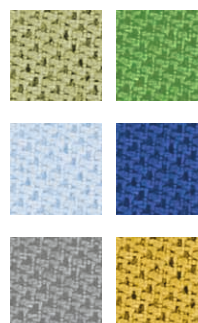
Mechanism	Synchromat
Opening angle	23°
Synchro ratio	1:2.9
Weight adjustment	45 - 130 kg
Seat depth adjustment	75 mm (NPR 100 mm)
Backrest lock	3 positions
Seat height	415 - 540 mm
Seat height (NPR)	410 - 555 mm
Seat width	470 mm
Seat depth	390 - 465 mm
Seat depth (NPR)	390 - 490 mm
Back width	430 mm
Back height	570 mm
Total width	645 mm

**Seat upholstery:**  
Standard upholstery (45 mm) or soft upholstery (60 mm)

**Sustainable fabrics made from recycled materials (polyester):**

FABRIC GROUP 13  
is made from 100% recycled post-consumer polyester

Sample selection of colours



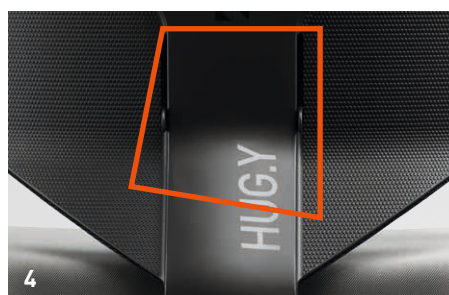
1



2



3



4

## 1 | ARMREST OPTIONS

Three different types to choose from.

## 2 | SYNCHROMAT

The automatic weight setting function with fine adjustment is designed for user weights of 45 to 130 kg.

## 3 | STAR BASE

in black plastic.

## 4 | LUMBAR SUPPORT

Height-adjustable and available as an option.

**OPTIONAL**  
delivery in component  
form, boxed.  
(not NPR version)

