



OVUCHECK[®]

Progesterone measurement



***Essential diagnostic tools to
optimize canine reproduction***

Biovet[®]

www.biovet.ca

order@biovet-inc.com

Progesterone measurement

DETERMINING THE BEST TIME TO BREED

A dog breeder can only prosper if mating is successful. Incorrectly identifying the mating period is the main cause of infertility in the bitch.

Traditional subjective indicators used (appearance of vaginal discharge, number of days after the beginning of vaginal bleeding, acceptance of the male) are not always reliable. Moreover, at least a third of bitches will have an irregular cycle during the estrus, that is the fertile period which may vary from heat to heat.

Monitoring progesterone levels allows you to accurately pinpoint optimal fertility in the female. Quick and easy to use, PREMATE® helps you determine the ideal time for breeding through semi-quantitative measurements.

Breeding at the right time also means better fertility and increased prolificacy rate.

WHY USE PROGESTERONE?

- ✓ Because, even though vaginal smears are quite simple to do, they do not always give an accurate picture of the estrus cycle;
- ✓ Because progesterone dosing is a recognized reliable indicator of the mating season.

OVUCHECK PREMATE®

Premate® is a test that is specially elaborated for dog breeding

- ✓ Fast results in 35 minutes
- ✓ Affordable
- ✓ Reliable
- ✓ Efficient
- ✓ Semi-quantitative
- ✓ No reader necessary
- ✓ No incubator necessary
- ✓ Point of care



WHY USE PREMATE®

- ✓ To increase breeding success
- ✓ To increase the prolificacy rate of litters
- ✓ To more accurately determine the whelping due date
- ✓ To reduce needless travel in the case of unsuccessful breeding



THE PRECISION OF A REFERENCE METHOD AT A MUCH LOWER COST!

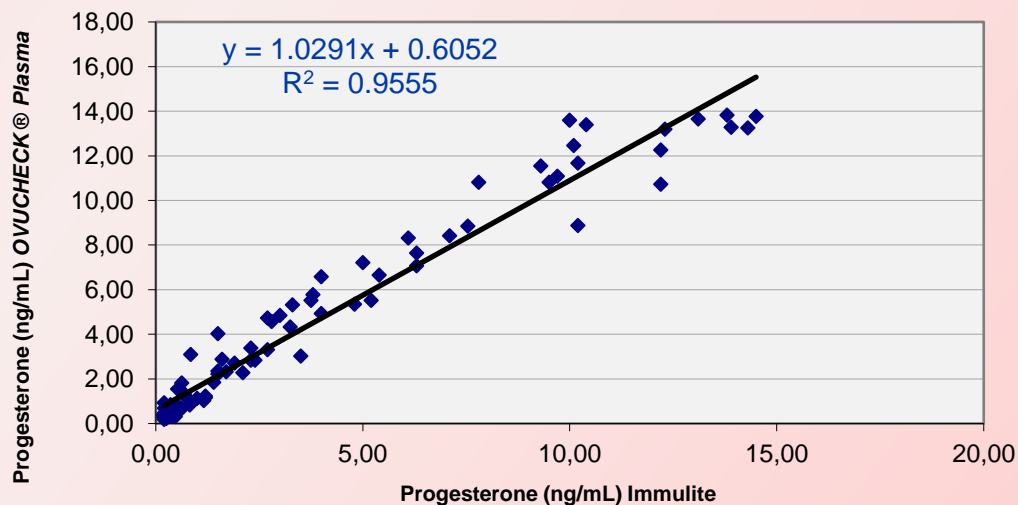
OVUCHECK® PLASMA

- ✓ No more waiting until the next day for results
- ✓ Reliable results within 85 minutes with an ELISA reader
- ✓ Precision comparable to that of a reference method (correlation R^2 of 0.96)
- ✓ Much lower cost analyzer
- ✓ Much lower cost reagent
- ✓ Precise progesterone analyses made more affordable than ever!



OVUCHECK® PLASMA results correlate closely with results obtained in reference laboratories that use Immulite* analyzer (R^2 of 0.96)

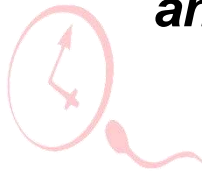
Tests performed using 91 sera from dogs with progesterone lower than 16 ng/mL



* Immulite is a trademark of Siemens

Breeding at the right time means better fertility and increased prolificacy

OVUCHECK® Plasma, Premate 5 - 10 and OVUCHECK Reader®



Fast



Affordable



Reliable



Efficient



	OVUCHECK® Plasma Immunoenzymatic ELISA test	OVUCHECK® Premate Immunoenzymatic ELISA test	
Progesterone measurement	quantitative	semi-quantitative $\left\{ \begin{array}{l} < 3 \text{ ng/mL} \\ 3-10 \text{ ng/mL} \\ > 10 \text{ ng/mL} \end{array} \right.$	
Sample	serum or plasma	serum or plasma	
Volume	10 µL	one drop	
Hands on Hands off	85 minutes	35 minutes	
Material required but not provided	micropipette 10 – 100 µL + tips strip reader (eg. Ovucheck Reader®) with 405 nm filter wash bottle distilled water	tap water	
Number of wells	96 wells	Premate 5 16 wells	Premate 10 32 wells
Number of samples to be tested	19 – 92	5 – 14	10 – 30
PRODUCT CODE	TRM-546	TRM-541	TRM-540



OVUCHECK READER®

ELISA strip reader

- Required or useful with *Ovucheck® Plasma* kits for improving testing accuracy;
- A portable, compact, accurate, easy-to-use and affordable device.

Product code: TRD-751

Rev.2017-06-16

For further information contact us:

UNITED STATES
1-877-8BIOVET
(824-6838)

www.biovet.ca
order@biovet-inc.com

CANADA & INTERNATIONAL
1-888-8BIOVET
(824-6838)