

CE IVD

# Immunofluorescence

Infectious Diseases complete panel

25  
years  
vircell   
MICROBIOLOGISTS



New!

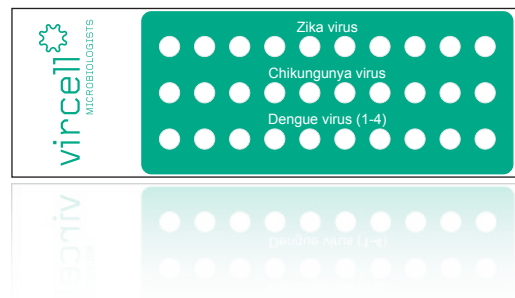
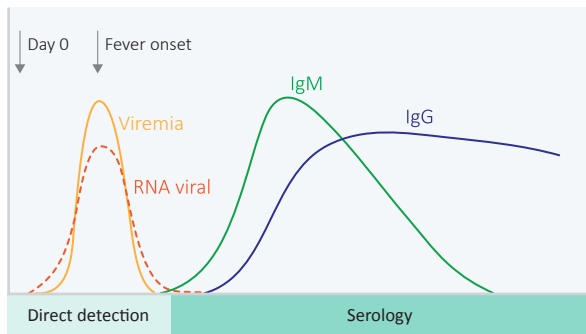
# Arbovirus Zika - Dengue - Chikungunya

Zika, Dengue and Chikungunya arbovirus infections share some clinical symptoms, circulate in the same geographical areas and are transmitted by the same vector, infected *Aedes* species mosquito.

At a clinical suspicion, laboratory confirmation is essential to:

- Differentiate diseases with very similar clinical symptoms
- Early detect new cases
- Epidemiological surveillance

The samples should be obtained as soon as possible after the onset of fever to maximize the diagnostic performance. However, these viremias are very short (5-8 days) and different technical approaches, depending on the stage of the disease, are required.



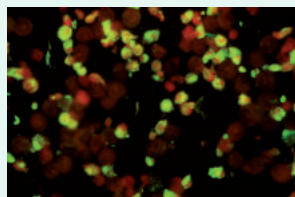
A week after the onset of symptoms, the PCR may give false-negative results and serological assays are more convenient.

Interpretation of serologic testing has a special relevance: Primary infections (first flavivirus infection) have shown minimal cross-reactions with other genetically related viruses and could be resolved by titration. However, sera from individuals with a previous history of infection with other flavivirus (specially dengue virus, West Nile and yellow fever- including its vaccine-) may have significant cross-reactions.

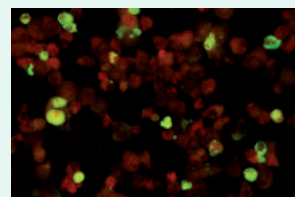
Cat. No.	Description	Pack size
PZDCG	ZIKV-DENV-CHIKV IFA IgG	100 tests
PZDCM	ZIKV-DENV-CHIKV IFA IgM	100 tests

## Easy reading and interpretation

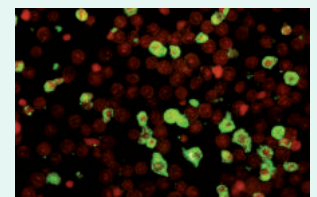
- Ø3mm wells separated and fully coated.
- Pool of infected and uninfected cells to detect samples with antinuclear antibodies that should be analyzed by a different technique.
- High contrast between infected and uninfected cells thanks to the use of Evans Blue dye in the conjugate.



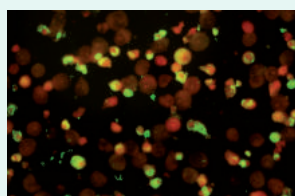
Zika IgG Positive



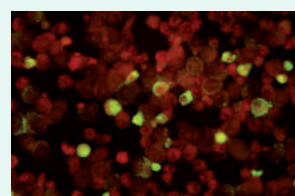
Dengue (1-4) IgG Positive



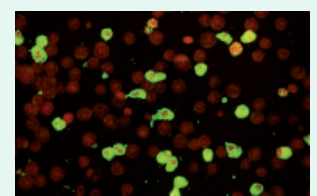
Chikungunya IgG Positive



Zika IgM Positive



Dengue (1-4) IgM Positive



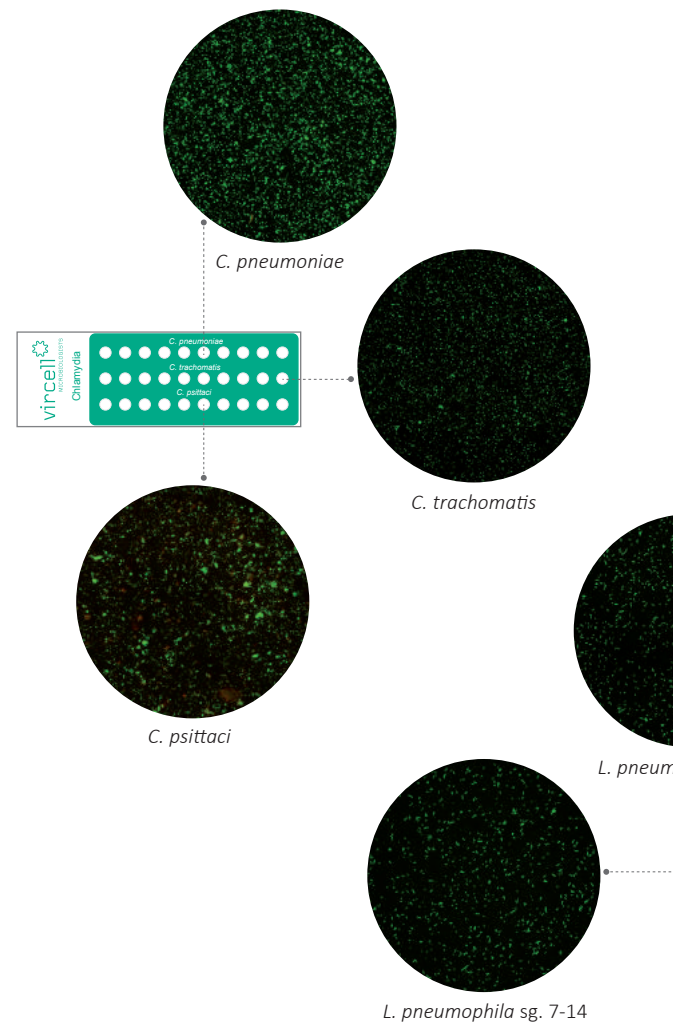
Chikungunya IgM Positive

# Bacterial infections

## Chlamydia

- **Micro-immunofluorescence** test for species-specific detection
- Differential diagnosis comparing **3 Chlamydia species** in fully coated separate wells
- **Elementary body antigen** (free from LPS) avoids cross-reactions

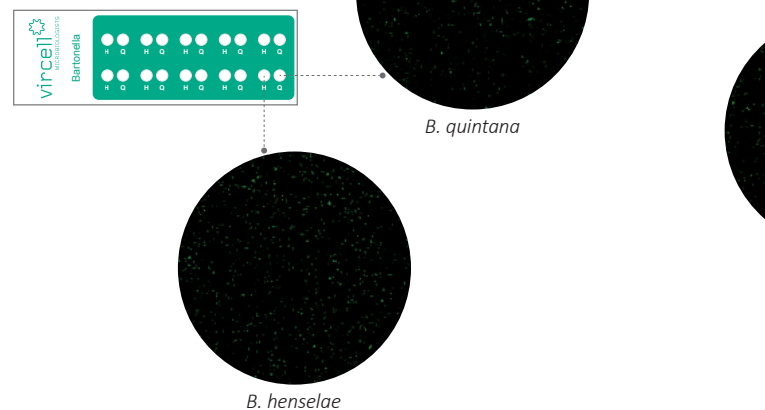
Cat. No.	Description	Pack size
PCHPNG	CHLAMYDOPHILA PNEUMONIAE IFA IgG	100 tests
PCHPNM	CHLAMYDOPHILA PNEUMONIAE IFA IgM	100 tests
SCHPN	CHLAMYDOPHILA PNEUMONIAE IFA SLIDE	100 tests

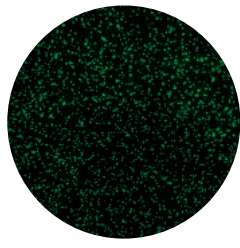


## Bartonella

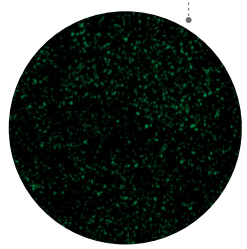
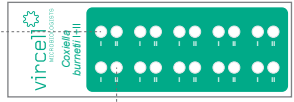
- **Differential diagnosis** of *B. henselae* and *B. quintana*
- Fully coated separated wells to **facilitate the reading of results**

Cat. No.	Description	Pack size
PBAHQG	BARTONELLA HENSELAE & QUINTANA IFA IgG	100 tests
PBAHQM	BARTONELLA HENSELAE & QUINTANA IFA IgM	100 tests
SBAHQ	BARTONELLA HENSELAE & QUINTANA IFA SLIDE	100 tests

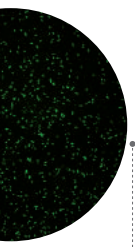




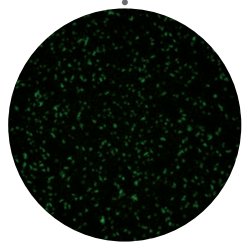
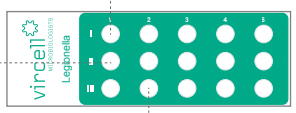
*C. burnetii* phase I



*C. burnetii* phase II



*Legionella pneumophila* sg. 1-6



Other *Legionella* species

## Coxiella

- Gold standard method for a **differential diagnosis** of acute and chronic disease
- *Coxiella burnetii* **phase I and phase II** antigen in fully coated separate wells to facilitate the reading of results
- **IgG, IgM and IgA conjugates** included

Cat. No.	Description	Pack size
PCOBUG	COXIELLA BURNETII IFA IgG	100 tests
PCOBUM	COXIELLA BURNETII IFA IgM	100 tests
PCOBU I+II	COXIELLA BURNETII I+II IFA IgG/IgM/IgA	100 tests
SCOBU	COXIELLA BURNETII IFA SLIDE	100 tests

## Legionella

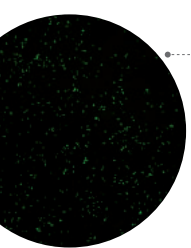
- **Non- filamentous forms antigen** to avoid false positive results
- **Complete panel** of products for detection of LPN serogroup 1, LPN serogroups 1-6 and *Legionella* sp.

Cat. No.	Description	Pack size
PLEPNG	LEGIONELLA PNEUMOPHILA IFA IgG	100 tests
PLEPNM	LEGIONELLA PNEUMOPHILA IFA IgM	100 tests
SLEPN	LEGIONELLA PNEUMOPHILA IFA SLIDE	100 tests
PLESXG	LEGIONELLA PNEUMOPHILA SG 1-6 IFA IgG	100 tests
PLESPG	LEGIONELLA SP IFA IgG	100 tests
PLESPG-5	LEGIONELLA SP IFA IgG	50 tests

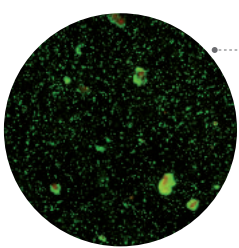
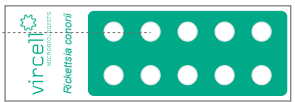
## Rickettsia

- **Complete panel** for *Rickettsia typhi* and *Rickettsia conorii* detection
- Gold standard method for an **early diagnosis without cross-reactions**

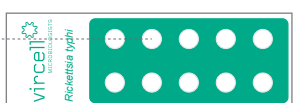
Cat. No.	Description	Pack size
PRICOG	RICKETTSIA CONORII IFA IgG	100 tests
PRICOM	RICKETTSIA CONORII IFA IgM	100 tests
SRICO	RICKETTSIA CONORII IFA SLIDE	100 tests
PRITYG	RICKETTSIA TYPHI IFA IgG	100 tests
PRITYM	RICKETTSIA TYPHI IFA IgM	100 tests
PRITY	RICKETTSIA TYPHI IFA IgG+IgM	100 tests
SRITY	RICKETTSIA TYPHI IFA SLIDE	100 tests



*R. conorii*



*R. typhi*



# Atypical pneumonia

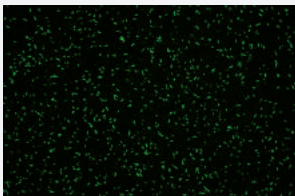
- Indirect immunofluorescence assay to simultaneously detect antibodies against the main viruses and bacteria causing atypical pneumonia
- MIF assay for more specific results in *C. pneumoniae*
- Easy results reading with fully coated separate wells
- Complete kits including all the necessary reagents to perform the technique

## PNEUMOSLIDE

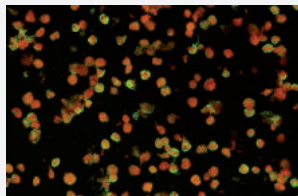
Adenovirus, Respiratory syncytial virus, Influenza A, Influenza B, Parainfluenza 1, 2 and 3, *Legionella pneumophila* sg 1, *Mycoplasma pneumoniae*, *Coxiella burnetii*, *Chlamydophila pneumoniae* and cell control

## PNEUMOBACT

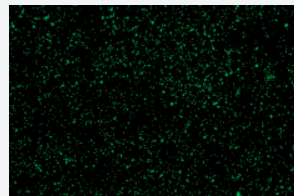
*Legionella pneumophila* sg 1, *Mycoplasma pneumoniae*, *Coxiella burnetii*, *Chlamydophila pneumoniae* and *Chlamydophila psittaci*



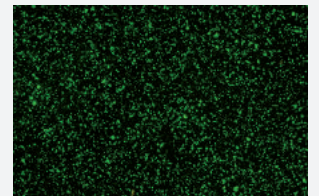
1. *Legionella pneumophila* sg 1



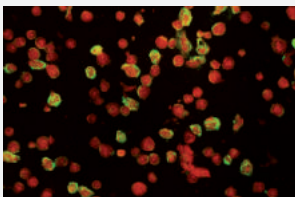
2. *Mycoplasma pneumoniae*



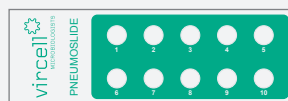
3. *Coxiella burnetii*



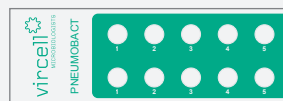
4. *Chlamydophila pneumoniae*



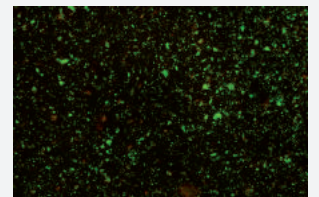
5. Adenovirus (NSLIDE)



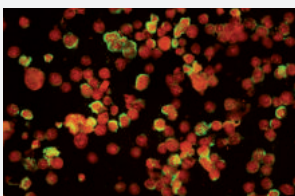
NSLIDEG-PNEUMOSLIDE IgG-20 tests  
NSLIDEM-PNEUMOSLIDE IgM-10 tests



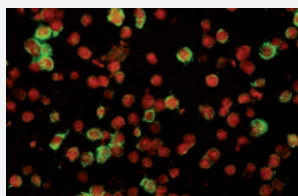
NBACT-PNEUMOBACT-20 tests



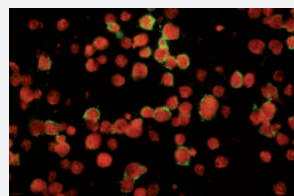
5. *Chlamydophila psittaci* (NBACT)



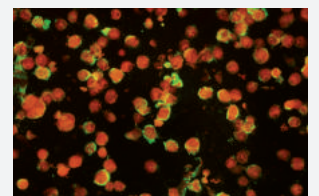
6. Respiratory syncytial virus



7. Influenza A



8. Influenza B



9. Parainfluenza 1, 2 and 3



# Ordering information

## Single Tests

Cat. No.	Description	Pack size
PADNG	ADENOVIRUS IFA IgG	100 tests
PADNM	ADENOVIRUS IFA IgM	100 tests
SADN	ADENOVIRUS IFA SLIDE	100 tests
PBAHQG	BARTONELLA HENSELAE & QUINTANA IFA IgG	100 tests
PBAHQM	BARTONELLA HENSELAE & QUINTANA IFA IgM	100 tests
SBAHQ	BARTONELLA HENSELAE & QUINTANA IFA SLIDE	100 tests
PCHAG	CHAGAS IFA IgG+IgM	100 tests
SCHAG	CHAGAS IFA SLIDE	100 tests
PCHPNG	CHLAMYDOPHILA PNEUMONIAE IFA IgG	100 tests
PCHPNM	CHLAMYDOPHILA PNEUMONIAE IFA IgM	100 tests
SCHPN	CHLAMYDOPHILA PNEUMONIAE IFA SLIDE	100 tests
PCOBUG	COXIELLA BURNETII IFA IgG	100 tests
PCOBUM	COXIELLA BURNETII IFA IgM	100 tests
PCOBU I+II	COXIELLA BURNETII I+II IFA IgG/IgM/IgA	100 tests
SCOBU	COXIELLA BURNETII IFA SLIDE	100 tests
PINFAG	INFLUENZA A IFA IgG	100 tests
PINFAM	INFLUENZA A IFA IgM	100 tests
SINFA	INFLUENZA A IFA SLIDE	100 tests
PINFBG	INFLUENZA B IFA IgG	100 tests
PINFBM	INFLUENZA B IFA IgM	100 tests
SINFB	INFLUENZA B IFA SLIDE	100 tests
PCAALG	INVASIVE CANDIDIASIS (CAGTA) IFA IgG	50 tests
PLEPNG	LEGIONELLA PNEUMOPHILA IFA IgG	100 tests
PLEPNM	LEGIONELLA PNEUMOPHILA IFA IgM	100 tests
SLEPN	LEGIONELLA PNEUMOPHILA IFA SLIDE	100 tests
PLESXG	LEGIONELLA PNEUMOPHILA SG 1-6 IFA IgG	100 tests
PLESPG	LEGIONELLA SP IFA IgG	100 tests
PLESPG-5	LEGIONELLA SP IFA IgG	50 tests
PLEDOG	LEISHMANIA IFA IgG	100 tests
SLEDO	LEISHMANIA IFA SLIDE	100 tests
PMYPNG	MYCOPLASMA PNEUMONIAE IFA IgG	100 tests
PMYPNM	MYCOPLASMA PNEUMONIAE IFA IgM	100 tests
SMYPN	MYCOPLASMA PNEUMONIAE IFA SLIDE	100 tests
PVSRG	RESPIRATORY SYNCYTIAL VIRUS IFA IgG	100 tests
PVSRM	RESPIRATORY SYNCYTIAL VIRUS IFA IgM	100 tests
SVSR	RESPIRATORY SYNCYTIAL VIRUS IFA SLIDE	100 tests

Cat. No.	Description	Pack size
PRICOG	RICKETTSIA CONORII IFA IgG	100 tests
PRICOM	RICKETTSIA CONORII IFA IgM	100 tests
SRICO	RICKETTSIA CONORII IFA SLIDE	100 tests
PRITYG	RICKETTSIA TYPHI IFA IgG	100 tests
PRITYM	RICKETTSIA TYPHI IFA IgM	100 tests
PRITY	RICKETTSIA TYPHI IFA IgG+IgM	100 tests
SRITY	RICKETTSIA TYPHI IFA SLIDE	100 tests

## MultiTests

Cat. No.	Description	Pack size
NSLIDEG	PNEUMOSLIDE IgG	20 tests
NSLIDEM	PNEUMOSLIDE IgM	10 tests
NBACT	PNEUMOBACT	20 tests
PZDCG	ZIKV-DENV-CHIKV IFA IgG	100 tests
PZDCM	ZIKV-DENV-CHIKV IFA IgM	100 tests

## Other IFA products

Cat. No.	Description	Pack size
S002	IFA SORBENT	100 tests
S002-100	IFA SORBENT	4,000 tests

### Vircell, S.L.

Parque Tecnológico de la Salud, Avicena 8  
18016 Granada. Spain. Tel. +34 958 441 264  
info@vircell.com [www.vircell.com](http://www.vircell.com)