

Unstained SDS PAGE Protein Marker 6.5 – 200 kDa Liquid Mix

Specifications

Proteins

8 unstained proteins ranging from 6.5 kDa up to 200 kDa

Protein content

0.1 to 0.4 mg/ml per protein component

Buffer

50 mM Tris HCl,
10 mM DTT, 2 % SDS,
10 % sucrose,
0.1 % bromophenol blue,
pH 6.8

Overall volume

0.5 ml, ready-to-use solution

Shelf life

12 months at -20 °C

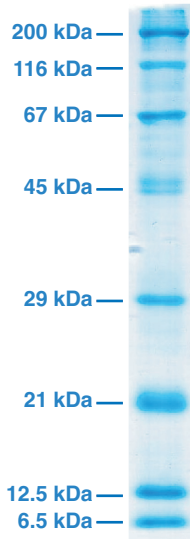
Ordering Information

Cat.-No. 39215.01 500 µl

- **Unstained marker proteins**
- **For precise molecular weight determination**
- **Ready-to-use solution**
- **Proteins are acetylated, reduced and denatured**
- **Eight proteins ranging from 6.5 kDa up to 200 kDa**

Product Description

The SERVA Unstained SDS PAGE Protein Marker 6.5 – 200 kDa Liquid Mix (cat.no. 39215) contains eight highly purified proteins which are provided unstained for accurate size determination. The molecular weights are 6.5, 12.5, 21, 29, 45, 67, 116 and 200 kDa. All components are delivered in similar amounts of 0.1 to 0.4 mg/ml in the mixture in order to provide bands of comparable intensity. The marker proteins are reduced, acetylated and denatured, and, therefore, ready-to-use.



Handling

Store the marker proteins at -20 °C. Avoid repeated thaw/freeze cycles. If necessary aliquot the marker proteins. Small aliquots may be stored at +4 °C for several days. To dissolve precipitated SDS please warm the marker solution to room temperature before loading. For mini gels use 5 μ l each lane when staining with SERVA Blue G, SERVA Blue R or similar. For silver staining dilute the liquid mix 1:5 using Laemmli buffer and load 5 μ l each lane.

Protein	Source	Size
Myosin	Bovine	200 kDa
β -Galactosidase	<i>E. coli</i> (recombinant)	116 kDa
Serum albumin	Bovine	67 kDa
Ovalbumin	Chicken egg	45 kDa
Carbonic anhydrase	Bovine erythrocytes	29 kDa
Trypsin inhibitor	Soybean	21 kDa
Lysozyme	Chicken egg	12.5 kDa
Aprotinin	Bovine lungs	6.5 kDa