

PRODUCT INFORMATION

SERVA Pink Color Protein Standard II **Cat. No.: 39259**

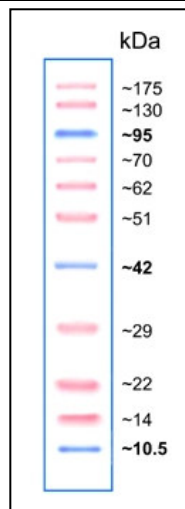
PRODUCT DESCRIPTION

SERVA Pink Color Protein Standard II is a dual color, ready-to-use protein marker. It is a mixture of 11 prestained proteins covering a wide range of molecular weights (10 – 175 kDa on Tris-Glycine gels). Due to the covalently bound chromo-phores, 11 proteins are visible during electrophoresis or Western Blotting. The chromophore also affects the apparent molecular weight of the proteins in SDS-PAGE, unstained protein standard should be used for accurate molecular weight determination. For easy identification the 10 kDa-, 40 kDa- and the 90 kDa band are blue-colored. All other protein bands are pink-colored.

Application SDS PAGE, Western Blotting

Features

- Number of bands: 11
- Dual colored
- Broad range size estimation: 10 – 175 kDa (on Tris-Glycine gels)
- Easy visualization during electrophoresis and evaluation of western transfer efficiency
- Ready-to-use: **No** heating to 95 °C, dilution or addition of reducing agents before use..
- Supplied in a buffer containing 20 mM trisphosphate pH 7.5, 2 % SDS, 1 mM 2-mercaptoethanol, 3.6 M urea, and 15 % (v/v) glycerol.



Storage

Long term storage at -20 °C: Please aliquot in a small volume to avoid repeated freezing and thawing.
Stable for up to 3 months at 4 °C.
Stable for up to 2 weeks at 25 °C.

Usage information

Thaw the marker at room temperature or at 37 – 40 °C for a few minutes to dissolve precipitates.

- 5 µl/lane on mini- and 10 µl/lane on large formate gels for SDS PAGE
- 2.5 µl/lane on mini- and 5 µl/lane on large formate gels for general Western transfer

Ver. 07/13