

VECTASHIELD® PLUS

Antifade Mounting Medium

Cat. No.: H-1900

Storage: 2-8 °C

Refractive Index: 1.45

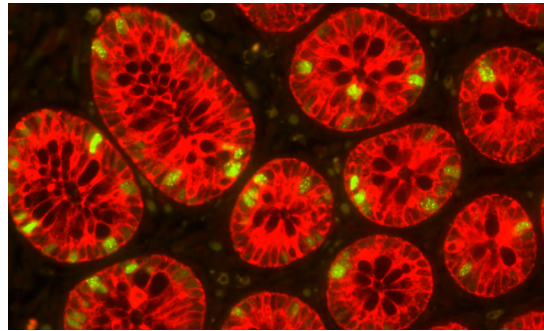
DESCRIPTION

VECTASHIELD PLUS Antifade Mounting Medium is a unique, stable formula for preserving fluorescence. VECTASHIELD PLUS Antifade Mounting Medium prevents rapid photobleaching of fluorescent proteins and fluorescent dyes (see website for compatibility).

Each lot is tested for photobleaching retardance with qualitative and quantitative methods.

VECTASHIELD Antifade Mounting Media Products:

Product	Counterstain	Cat. No.	Unit Size	Hardening
VECTASHIELD Antifade Mounting Medium	none	H-1000	10 ml	no
	DAPI	H-1200	10 ml	no
	PI	H-1300	10 ml	no
VECTASHIELD PLUS Antifade Mounting Medium	none	H-1900	2 ml, 10 ml	no
	DAPI	H-2000	2 ml, 10 ml	no
VECTASHIELD HardSet™ Antifade Mounting Medium	none	H-1400	10 ml	yes
	DAPI	H-1500	10 ml	yes
	TRITC-Phalloidin	H-1600	10 ml	yes
VECTASHIELD Vibrance™ Antifade Mounting Medium	none	H-1700	2 ml, 10 ml	yes
	DAPI	H-1800	2 ml, 10 ml	yes



Colon: Rabbit Anti-Cytokeratin and Mouse Anti-Ki67 detected simultaneously with VectaFluor™ Duet Immunofluorescence Double Labelling Kit (DK-8828); Dylight® 488 Anti-Mouse (green)/Dylight 594 Anti-Rabbit (red). Mounted in VECTASHIELD PLUS Antifade Mounting Medium.

APPLICATION

To mount tissues or cells on a slide dispense VECTASHIELD PLUS Antifade Mounting Medium onto the specimen using a disposable pipet or pipet tip. Coverslip the specimen and allow VECTASHIELD PLUS Antifade Mounting Medium to disperse over the entire section. Tightly seal the bottle with the screw cap after use and store in an upright position.

VECTASHIELD PLUS Antifade Mounting Medium does not solidify, but remains a liquid on the slide and can be stored without sealing. If desired, coverslips can be sealed around the perimeter with nail polish or a plastic sealant. Mounted slides should be stored at 2-8 °C, protected from light.

Slides can be viewed immediately after mounting, however optimal antifade performance is achieved after 1 hour.