



**SPACE ON
DEMAND**





Open up your camper van with our integrated, Vela popup or get space-on-demand with a Lippert slide-out. Our award-winning SmartRoom slide-out increases living space, all the while remaining compact when driving.

VELA

Pop-up roof

- Specifically designed for Fiat Ducato H2 vehicles
- Top and bottom panels are constructed with thermoformed technology using acrylonitrile butadiene styrene (ABS) and polymethyl methacrylate (PMMA) with closed-cell extruded polystyrene foam spacers
- Construction materials make this pop top lighter than standard rooftop units
- Canvas made from 100% double-coated polyester
- Two LED map lights illuminate the area around the bed for safety
- Pre-wired with electric cable to manage the roof light and solar panel (not included)
- Includes folding ladder for rooftop access
- Large aluminum bed frame with wooden slats provides ample sleeping space (mattress not included)
- Installation glue kit sold separately (#2021135968)



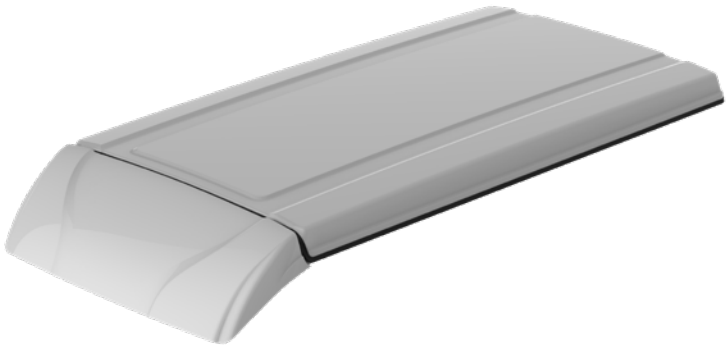
Provides an extra sleeping area with access through the roof of the unit



Integrated USB ports conveniently charge phones, tablets and more

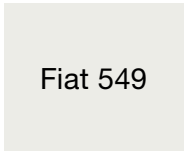


Two rooftop LED light strips provide overhead lighting



Part #	Space	↕ Length	↕ Width	↕ Height	📦	Solar Panel Allowance
2022015540	Closed	3.000 mm	1.620 mm	260 mm	150 kg	220 watts
	Opened	3.000 mm	1.620 mm	1.080 mm		
	Entrance	1.000 or 1.100 mm	600 mm	--		
	Bed base	1.950 mm	1.250 mm	35 mm		
	Accepts mattress size	1.950 mm	1.250 mm	50 mm		

Color options*



White



Window grey

* Color swatches are representative only. Please call for exact color specifications.

BELVEDERE

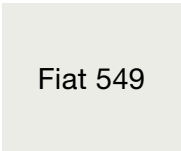
Pop-up roof

- Specifically designed for Ford Transit vehicles
- Provides an extra sleeping area with primary access through the roof of the unit
- Top is constructed out of fiberglass-laminated external sheets with closed-cell extruded polystyrene foam panels and a PVC frame
- Bottom panel is constructed with thermoformed technology using acrylonitrile butadiene styrene (ABS) and polymethyl methacrylate (PMMA) with closed-cell extruded polystyrene foam spacers
- Construction materials make this pop top lighter than standard rooftop units
- Thermo-insulated panels keep campers warm
- Canvas made from 100% double-coated polyester
- Two LED map lights illuminate the area around the bed for safety
- Integrated USB ports conveniently charge phones, tablets and more
- Includes folding ladder for rooftop access
- Large aluminum bed frame with wooden slats provides ample sleeping space (mattress not included)
- Available with or without blind spoiler



Part #	Space	↕ Length	↕ Width	↕ Height	🛒	Solar Panel Allowance
2022110788	Closed	2.910 mm	1.625 mm	170 mm	117 kg	220 watts
	Opened	2.910 mm	1.625 mm	1.050 mm		
	Entrance	600 mm	1.000 mm	--		
	Bed base	1.950 mm	1.180 mm	35 mm		
	Accepts mattress size	1.950 mm	1.180 mm	50 mm		

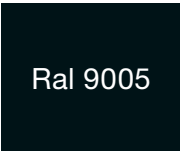
Color options*



White



Window grey



Jet black

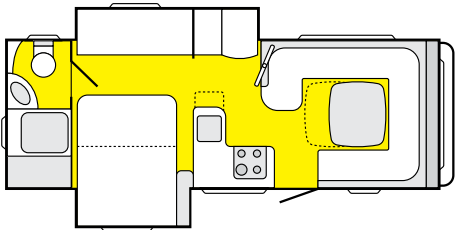
* Color swatches are representative only. Please call for exact color specifications.



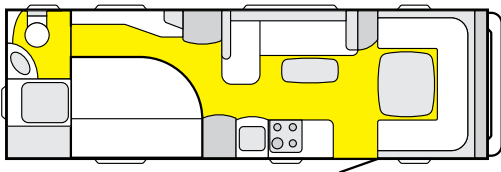
SMARTROOM®

Slide-out on-demand

- Lightweight room increases the living space within a caravan or motorcaravan
- Innovative design allows the vehicle to maintain its overall length
- No additional frame and chassis components required
- Easy to open and close with the push of a button
- For a complete SmartRoom®, slide-out kit and slide-out frame kit are required



SmartRoom version



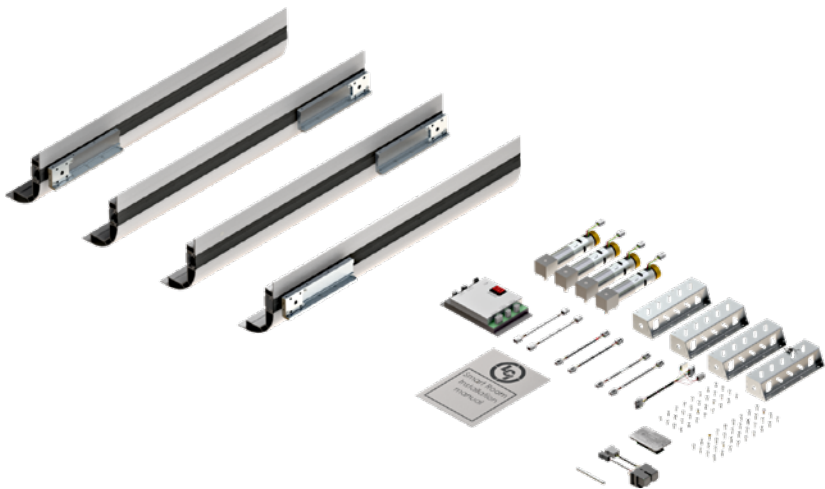
Standard version

Figure	Vehicle Weight	↕ Vehicle Length	↕ Living Area	↕ Vehicle Width
SmartRoom	1.868 kg	6.651 mm	17,60 sqm	2.286 mm
Standard	1.974 kg	7.464 mm	17,00 sqm	2.286 mm

SMARTROOM®

Slide-out kits

- Extends the vehicles's wall for increased living space
- Equipped with an sensor to alert users the slide-out is in the open position before they travel
- Includes versatile and flexible four-motor structure that moves on a rack and pinion system
- Kit includes four corners with pre-assembled motor, wiring, remote panel, control unit, relay kit and SmartRoom® drive key
- Panels not included

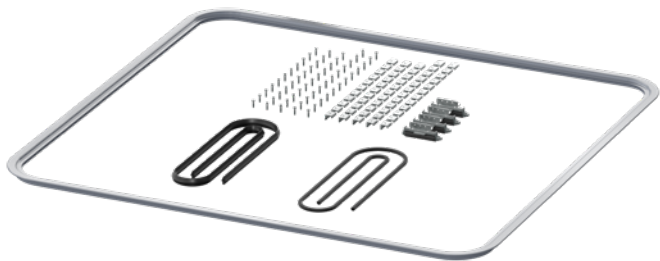


Part #	Max Stroke	↕ Max Dimensions		Absorption Per System	
				Nominal	Peak
2021104237	700 mm	3.500 mm x 2.000 mm	28 kg	12A	40A
2021104264	1.000 mm	3.500 mm x 2.000 mm	35 kg	12A	40A

SMARTROOM®

Slide-out frame kits

- Seal provides superior adherence to avoid water leaks and dirt accumulation
- Designed with a specific V-shape that works with the wide radius of the angle pieces and flat surfaces of the side walls
- Kit includes: frame, frame brackets, seal, screws and roller supports
- Panels not included



Part #	↕ W	↕ H	Color	Material
2021104221	1.600 mm	1.500 mm	White	Aluminum
2021104224	2.500 mm	2.000 mm	White	Aluminum
2021104218	3.500 mm	2.000 mm	White	Aluminum



