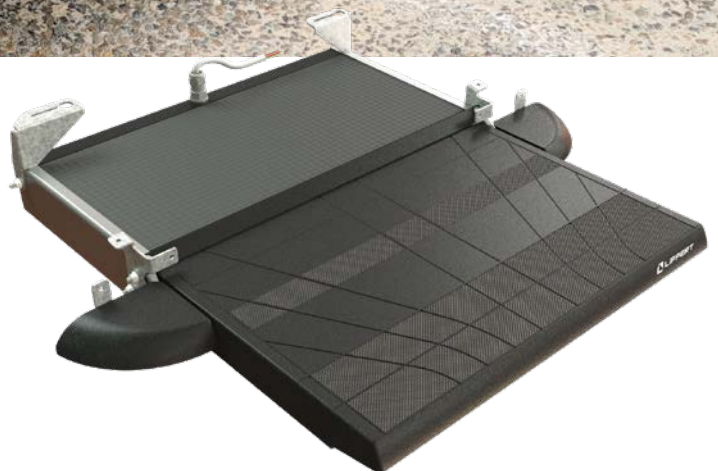




## ALANERA ELECTRIC SLIDE-OUT STEP

Automatically slide-out and step on the Alanera electric slide-out step. The Alanera offers ease of use, lightweight construction and is designed to meet the style of the modern motorcaravan with its sleek profile and high-quality finish.





## STEP WITH STYLE

### Sleek and stylish



Sleek, modern design to complement modern caravans and motorcaravans

### Unique drain system



Unique drain channels help keep the tread clean in any weather

### Easy to clean



Simply spray off with a hose

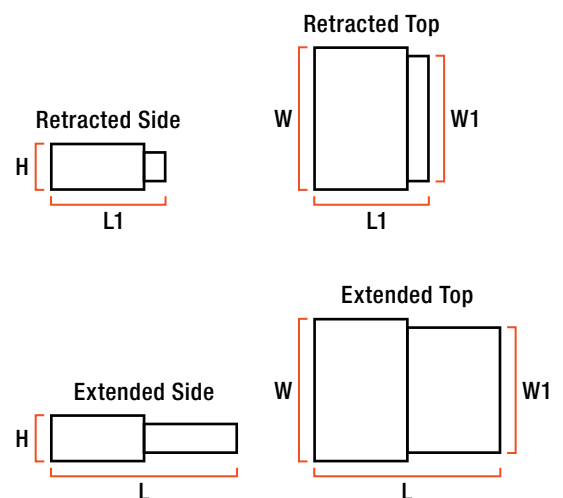
### Anti-slip surface



Anti-slip finish for safe entry and exit

### Additional Features

- High-power 12V motor
- Automatic slide-out motion for a safe, comfortable, unobtrusive step
- Lightweight yet durable construction with high-tech, injection molded polymer
- Weatherproof and tested for the outdoors
- Integrated motor sensor for 'open step' warning
- Integrated thermal breaker in case of excessive strain
- Includes manual, quick-release emergency system
- Anti-slip finish for safe entry and exit
- Side wings help integrate the step with the vehicle and can support a person's weight
- Automotive-quality finish for lasting resilience
- Installation wiring cables included with electric models
- Installation kits available for: Fiat Ducato, Citroen Jumper, Peugeot Boxer and Ford Transit



Includes	↕ H	↕ W	↕ W1	↕ L	↕ L1	🛒	🛒	⚡
Step and lateral wings (installation kits sold separately)	85 mm	562 mm	550 mm	692 mm	445 mm	5,9 kg	200 kg	2,5 A