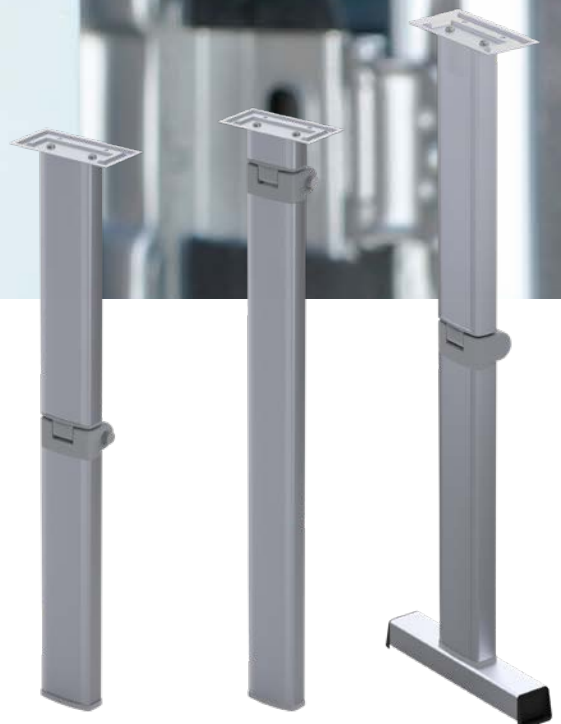




MAGNUM FOLDING SUPPORT TABLE LEGS

Fold your table away for compact storage with the Magnum folding support table leg. The Magnum offers an easy-to-use, lightweight construction with a durable and rust-resistant design.



STRONG, VERSATILE AND RELIABLE FOR THE PERFECT FIT

Fold away, compact storage



Fluted oval tube profile with folding design for compact storage

Durable design



Die-cast aluminum hinge and top plate

Magnum 1

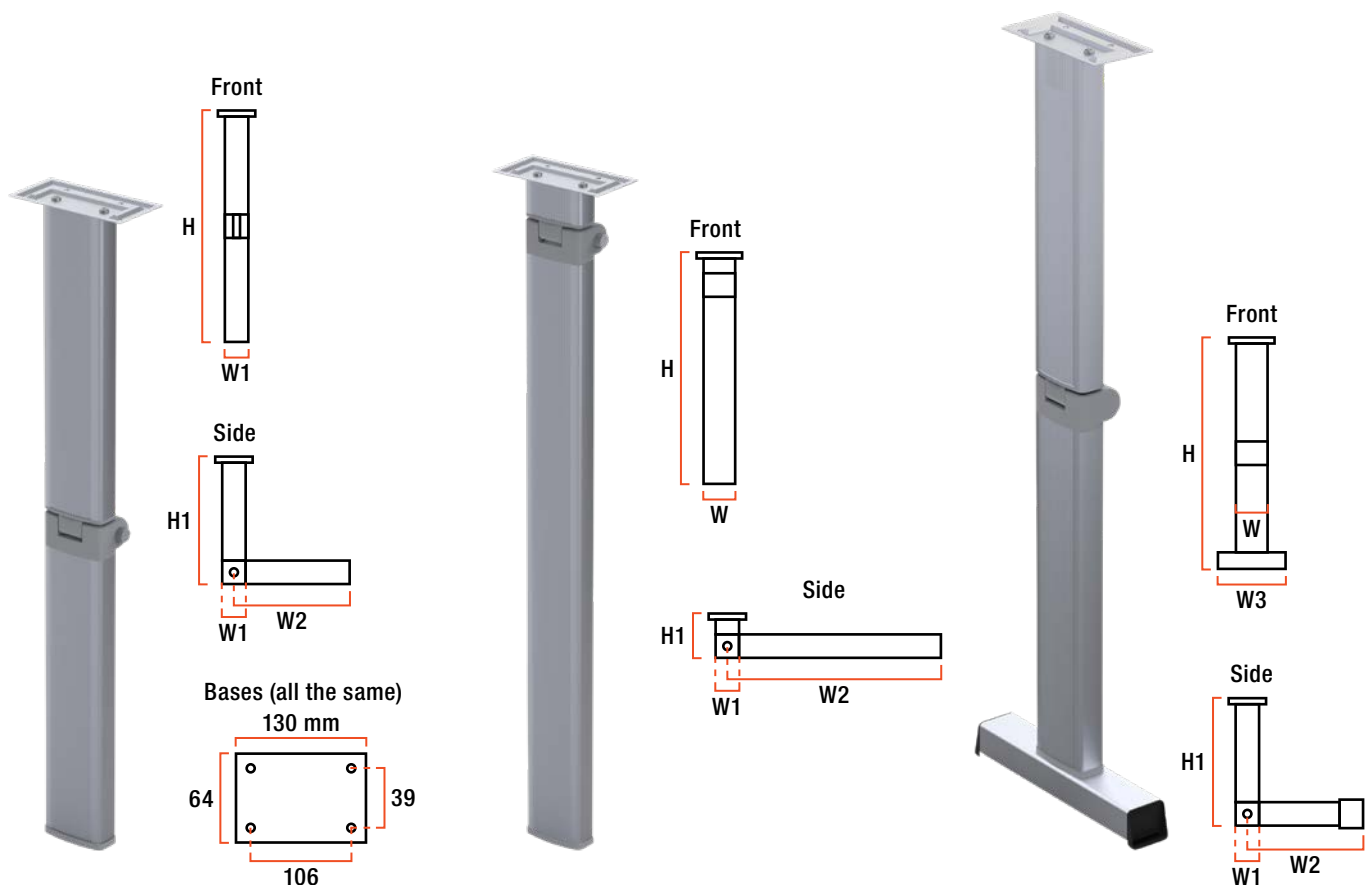
- Extruded, anodized aluminum to be strong and lightweight
- Fluted oval tube profile
- Customizable hinge position

Magnum 2

- Extruded, anodized aluminum to be strong and lightweight
- 70 x 30 mm fluted oval tube profile for a robust accent

Magnum 3

- Extruded, anodized aluminum to be strong and lightweight
- Fluted oval tube profile
- Bottom foot for increased stability
- Customizable hinge position



Version	Foot Style	↕ H	↕ H1	↕ W	↕ W1	↕ W2	↕ W3	↕ Foot Size
1	Simple	720 mm	380 mm	70 mm	33 mm	375 mm	--	75 x 38 mm
2	Simple	720 mm	100 mm	70 mm	33 mm	655 mm	--	75 x 38 mm
3	Simple	720 mm	380 mm	70 mm	33 mm	375 mm	235 mm	235 x 38 mm
3	Wheeled	720 mm	380 mm	70 mm	33 mm	375 mm	235 mm	235 x 38 mm