



VISTA DUCATO WINDOW SYSTEM

Open up to a panoramic view with the Vista Ducato fully-integrated, polymer framed window system. The Vista Ducato with integrated blind and flyscreen offers a unique aerodynamic design, links up smoothly with the vehicle curves and creates a pleasant ambiance.



OPEN UP TO A PANORAMIC VIEW

Integrated ventilation system



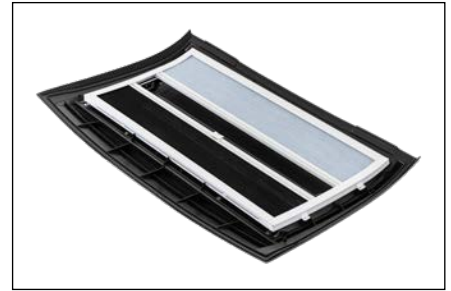
Integrated pleated-blind system

Manual operation



Manually operated panoramic roof window with a unique aerodynamic design

Easy assembly



Quick installation possible due to a complete pre-mounted assembly

Additional Features

- Intended use for an H2 vehicle with an X290 platform (Fiat Ducato, Peugeot Boxer, Citroën Jumper)
- Available as openable version or fixed
- Double pane, cast acrylic window with a thermoformed inner and outer sheet
- Injection molded black, polymer adapter
- Installation by gluing and mechanical fixation
- Tested at speeds up to 160 km/h
- Operation temperature of -20°C to 50°C
- Opens to a maximum of 20° for ventilation
- Upgrade in 2024
- Easy-to-install system comes pre-assembled, including adapter, window and blind system

Setting up your Vista Ducato

Contact our sales department to customize your complete window system, including sizes, standard parts and system options.

Step 1: Standard parts

The sales representative will walk you through the customization of standard parts required for installation and operation.

Standard

- Manual tubular stays with screwed installation
- Screwed catches with lock button

Step 2: System options

Customize the design with the options below.

	Standard	Other Options
Version	Openable	Fixed
Window color (outer sheet)	Grey	--
Window color (inner sheet)	Transparent	-
Screen print color	Black	--
Frame color	Black	--

Step 3: Parts for installation

Includes special fixation cones to cover up the screwing domes and screws. Special glue to apply inside the glue channel is not included and is required for installation. Contact the supplier for expert glue prescription.

Step 4: Contact us

↗ Wall Aperture Height	↗ Wall Aperture Width	Wall Aperture Radius	Build-Up Height From Wall	Product Weight
660 mm	1.270 mm	60 mm	80 mm	15 kg

All window systems should be installed by professionals