



ALANERA ELECTRIC SLIDE-OUT STEP

The Alanera slide-out step is designed to meet the style of the modern motorcaravan with its sleek profile and high-quality finish, combined with improvements in both weight savings and ease of use.



STEP WITH STYLE.

Sleek and stylish



Sleek, modern design to complement modern caravans and motorcaravans

Unique drain system



Unique drain channels help keep the tread clean in any weather

Easy to clean



Simply spray off with a hose

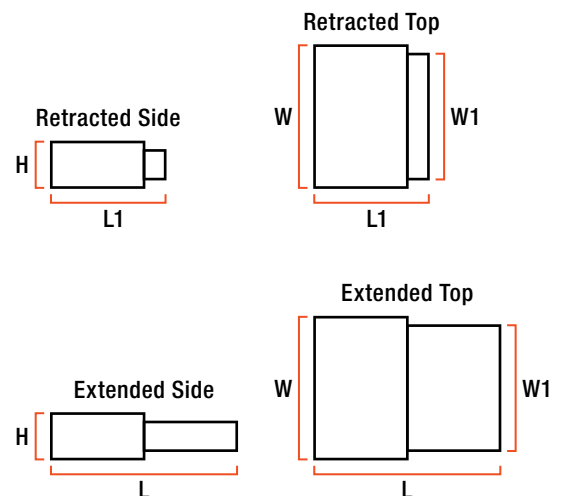
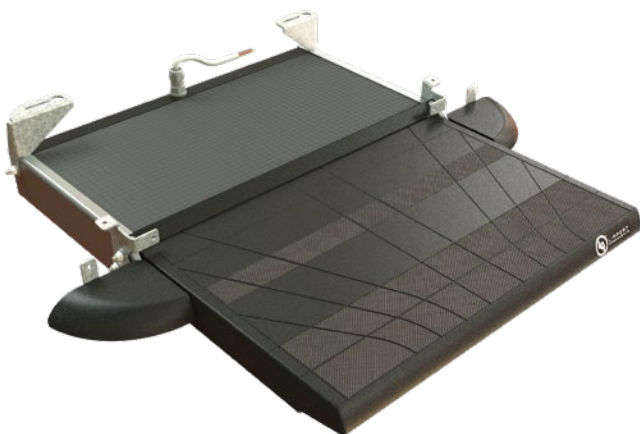
Anti-slip surface



Anti-slip finish for safe entry and exit

Additional Features

- High-power 12-volt motor fully extends step in 2,5 seconds
- Automatic slide-out motion for a safe, comfortable, unobtrusive step
- High-tech injection-molded polymer for a durable yet lightweight construction
- Side wings help integrate the step with the vehicle and can support a person's weight
- Automotive-quality finish for lasting resilience to the elements
- Combined absorption limit with Elektra.PLUS control unit (#2021104021): 6,8-amps
- Installation wiring cables included with electric models
- Installation kits available for:
Fiat Ducato / Citroen Jumper / Peugeot Boxer
Ford Transit / Mercedes-Benz Sprinter



Includes	↕ H	↕ W	↕ W1	↕ L	↕ L1	🛒	🛒	⚡
Step and lateral wings (installation kits sold separately)	85 mm	562 mm	550 mm	692 mm	445 mm	5,9 kg	200 kg	2,5 amps