



2023 CATALOG & APPLICATION GUIDES



**INTENTIONALLY LEFT BLANK
FOR TWO-PAGE VIEWING**

EVERYTHING YOU NEED

TO ENJOY THE ROAD AHEAD



Lippert is a leading, global manufacturer and supplier of highly engineered products and customized solutions dedicated to shaping, growing and bettering the RV, marine, automotive, commercial vehicle and building products industries. We combine our strategic manufacturing capabilities with the power of our winning team culture to deliver unrivaled customer service, award-winning innovation and premium products to every industry and person we serve.



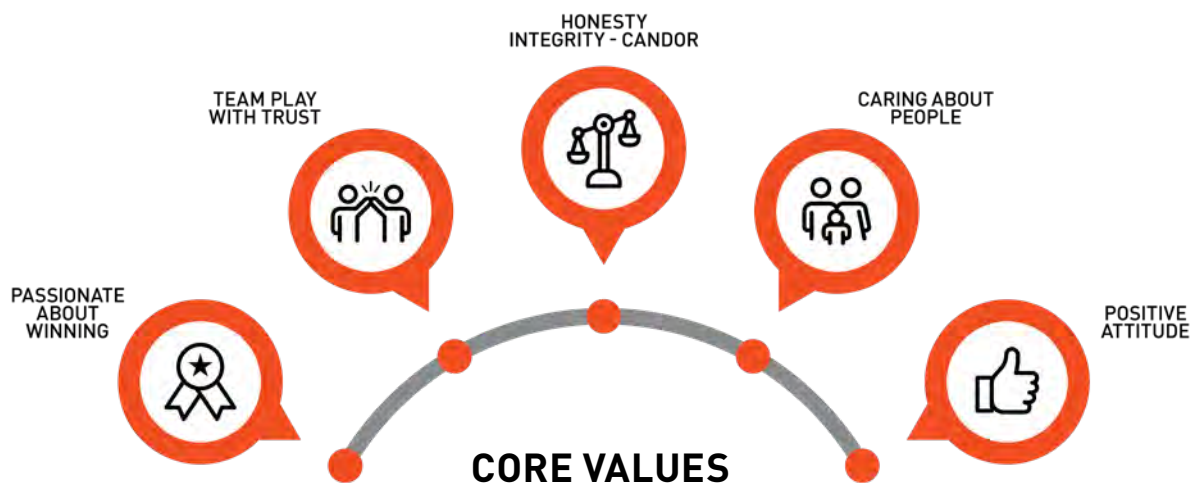
BUSINESS AS A FORCE FOR GOOD



Learn
how we're
making a
difference

OUR VISION: TO BE A FORCE FOR GOOD IN THE WORLD

Since 2016, Lippert has focused on designing a cultural foundation from which our success is based, and it stems from one simple driving force: At Lippert, Everyone Matters. From the shop floor to the C-suite, we simply care about people. Our culture is grounded in our five core values that we practice in our business every day.



OVER FIVE YEARS OF IMPACT



2,000+
non-profits served



550,000+
volunteer hours



\$2,000,000+
annually donated to charity



RANCH HAND®

WHAT SETS US APART.

Our priority is that you, your family and your vehicle are protected from the unpredictable. We've built a reputation for making the sturdiest products meticulously engineered for durability. You can ride in comfort knowing that everyone is safe behind the strength of our steel bumpers and grille guards.

MIDNIGHT™ SERIES

04

LEGEND™ SERIES

14

SUMMIT™ SERIES

36

SPORT™ SERIES

46

RUNNING STEPS

54

PUSH BARS

60



MIDNIGHT™

SERIES



A silver Ford pickup truck is shown from the side, parked on a sandy dune. The truck is a four-door model with a black side mirror and a black door handle. The background features a large, rolling sand dune under a cloudy sky. A dark, irregular shape is overlaid on the bottom right of the image, containing the text.

GO HARD OR GO HOME.

The Midnight™ series is built for those who go hard at everything they do, from the jobsite to the late-night and everything in between. Featuring a futuristic, form-fitted and lightweight design that is tailored to fit your truck like a glove, the Midnight™ series is made for those who press forward and don't have time for looking back.

MIDNIGHT™ FRONT BUMPER WITH GRILLE GUARD

Product Details

- Customizable, form-fitted and lightweight design with a modern, futuristic style
- 7-gauge sheet metal bumper with 1/4" steel brackets
- Welded grille guard with 12-gauge thick tubing for enhanced protection
- Perforated 12-gauge inserts provide protection to LED lights, light bar and grille
- Corrosion-resistant, 3/5mm thick, black carbide powder coat finish with liquid-A coat
- Accepts 32" light bar on trucks without sensors and 26" on trucks with sensors
- Retains factory fog lights or accepts 2" lights (tow hooks must be removed)
- Lower cutout for increased airflow to the engine bay
- Removable insert available to accommodate most front-facing cameras and sensors
- Black anodized stainless steel bolts for inserts
- Angled side wings provide increased wheel and ground clearance for off-road use
- Prominent Ranch Hand logo superimposed over a polished aluminum plate

See page 12 for application information



Designed for those who go hard. Any place, any time.



Built tough with 7-gauge smooth steel and form-fitted for a sleek, modern design. Includes 1/4" thick mounting brackets and 12-gauge perforated steel inserts



The fully-integrated grille guard features 12-gauge tubing that provides enhanced protection and safeguards the front-end from brush and road-debris



Features angled wings that provide extra wheel and ground clearance for off-road excursions and a lower cut-out for increased airflow to the engine

Finish & Material

Finish:
A-coat and
carbide black
powder coat

Material:
Carbon steel



Ram 1500



Ram 1500

MIDNIGHT™ FRONT BUMPER

Product Details

- Customizable, form-fitted and lightweight design with a modern, futuristic style
- 7-gauge smooth steel structure with 1/4" mounting brackets
- Perforated 12-gauge inserts provide protection to LED lights and light bar
- Corrosion-resistant, 3/5mm thick, carbide black powder coat finish
- Accepts 32" light bars on trucks without sensors and 26" on trucks with sensors
- Retains factory fog lights or accepts 2" lights (tow hooks must be removed)
- Angled side wings provide increased wheel and ground clearance for off-road use
- Lower cutout for increased airflow to the engine bay
- Compatible with front-facing cameras and sensors
- Black anodized stainless steel bolts for inserts

See page 12 for application information



Built for any adventure — day or night.



Perforated 12-gauge inserts provide protection to fog-lights and light-bars. Smooth 7-gauge steel provides tough yet light-weight protection for any adventure



Accepts a 26" or 32" light bar (depending on sensors); OEM fog lights or two 2" x 2" LED lights per side, and its inserts are removable to accommodate OEM cameras



Features angled wings that provide extra wheel and ground clearance for off-road excursions and a lower cut-out for increased airflow to the engine

Finish & Material

Finish:
A-coat and
carbide black
powder coat

Material:
Carbon steel



Chevrolet 1500



Ram 2500

MIDNIGHT™ REAR BUMPER

Product Details

- Form fitted and lightweight design with a modern, futuristic style
- 7-gauge smooth steel with 12-gauge inserts, 1/4" brackets and 3/4" shackles
- Corrosion-resistant, 3/5mm thick, carbide black powder coat finish
- Lightweight yet tough with improved strength through design and fabrication
- Incorporates spare tire lock cover
- Enables convenient access to factory receiver hitch
- Allows re-use of OEM trailer plug adapter
- Accommodates shackle brackets, LED license plate lights and integrated reverse lights (non-flush with floating mounts)
- Compatible with #LEDLICENSELIGHT
- Compatible with rear-facing sensors
- Perforated 12-gauge inserts provide protection to LED lights
- Angled wings for increased ground clearance
- Integrated cut-out for 7-way trailer socket

See page 12 for application information



Built tough and lightweight.



Midnight is hand fabricated with smooth, 7-gauge steel and 1/4" steel mounting brackets for unbeatable strength and durability



Form-fitted design sits tightly against the body, and angled wings provide improved ground clearance and an aggressive look



Features perforated 12-gauge steel inserts to protect LED lights, 3/4" shackle brackets, LED license plate and flush-mounted reverse lights

Finish & Material

Finish:
A-coat and
carbide black
powder coat

Material:
Carbon steel



Ram Bighorn



Scan for current applications
or visit ranchhand.com



MIDNIGHT™ SERIES APPLICATION GUIDE

Midnight Series Bumpers

Make / Model	Style	Years	Part #	Product Description	Retains			
					Parking Sensors	Front Camera	Tow Hooks	Fog Lights
Chevrolet								
Silverado 1500	Excluding diesel	19 - 21	MFC19HBM1	Front Bumper with Grille Guard	Yes	--	No	Yes
			MFC19HBMN	Front Bumper	Yes	--	No	Yes
			MBC19HBMSL	Rear Bumper	Yes	--	--	--
Silverado 1500 LTD	Excluding diesel	22 - 22	MFC19HBM1	Front Bumper with Grille Guard	Yes	--	No	Yes
			MFC19HBMN	Front Bumper	Yes	--	No	Yes
			MBC19HBMSL	Rear Bumper	Yes	--	--	--
Silverado 2500 HD / 3500 HD	--	20 - 22	MFC201BM1	Front Bumper with Grille Guard	Yes	Yes	Yes	Yes
			MFC201BMN	Front Bumper	Yes	Yes	Yes	Yes
			MBC201BMSL	Rear Bumper	Yes	--	--	--
		15 - 19	MFC151BM1	Front Bumper with Grille Guard	Yes	--	No	Yes
			MFC151BMN	Front Bumper	Yes	--	No	Yes
			MBC151BMSL	Rear Bumper	Yes	--	--	--
Dodge								
Ram 2500 / 3500	--	10 - 10	MFD101BM1	Front Bumper with Grille Guard	Yes	--	No	Yes
			MFD101BMN	Front Bumper	Yes	--	No	Yes
			MBD101BMSL	Rear Bumper	Yes	--	--	--
Ford								
F-150	--	21 - 22	MFF21HBM1	Front Bumper with Grille Guard	Yes	--	--	--
			MFF21HBMN	Front Bumper	Yes	--	--	--
		18 - 20	MFF18HBM1	Front Bumper with Grille Guard	Yes	Yes	No	Yes
			MFF18HBMN	Front Bumper	Yes	Yes	No	Yes
		15 - 22	MBF15HBMSL	Rear Bumper	Yes	--	--	--

Midnight Series Bumpers

Make / Model	Style	Years	Part #	Product Description	Retains			
					Parking Sensors	Front Camera	Tow Hooks	Fog Lights
Ford								
F-250 Super Duty	--	17 - 22	MFF201BM1	Front Bumper with Grille Guard	Yes	Yes	No	Yes
			MFF201BMN	Front Bumper	Yes	Yes	No	Yes
			MBF201BMSL	Rear Bumper	Yes	--	--	--
F-350 Super Duty	--	17 - 22	MFF201BM1	Front Bumper with Grille Guard	Yes	Yes	No	Yes
			MFF201BMN	Front Bumper	Yes	Yes	No	Yes
			MBF201BMSL	Rear Bumper	Yes	--	--	--
GMC								
Sierra 1500 (excluding diesel)	--	19 - 21	MFG19HBM1	Front Bumper with Grille Guard	Yes	--	No	Yes
			MFG19HBMN	Front Bumper	Yes	--	No	Yes
			MBC19HBMSL	Rear Bumper	Yes	--	--	--
Sierra 1500 Limited (excluding diesel)	--	22 - 22	MFG19HBM1	Front Bumper with Grille Guard	Yes	--	No	Yes
			MFG19HBMN	Front Bumper	Yes	--	No	Yes
			MBC19HBMSL	Rear Bumper	Yes	--	--	--
Sierra 2500 HD / 3500 HD	--	20 - 22	MFG201BM1	Front Bumper with Grille Guard	Yes	--	Yes	Yes
			MFG201BMN	Front Bumper	Yes	--	Yes	Yes
			MBC201BMSL	Rear Bumper	Yes	--	--	--
		15 - 19	MFG151BM1	Front Bumper with Grille Guard	Yes	--	No	Yes
			MFG151BMN	Front Bumper	Yes	--	No	Yes
			MBC151BMSL	Rear Bumper	Yes	--	--	--
Ram								
1500	Excluding diesel	19 - 22	MFD19HBM1	Front Bumper with Grille Guard	Yes	--	No	Yes
			MFD19HBMN	Front Bumper	Yes	--	No	Yes
			MBD19HBMSL	Rear Bumper	Yes	--	--	--
2500 / 3500	--	19 - 22	MFD191BM1	Front Bumper with Grille Guard	Yes	Yes	No	Yes
			MFD191BMN	Front Bumper	Yes	Yes	No	Yes
			MBD191BMSL	Rear Bumper	Yes	--	--	--
	Excluding Tradesman	11 - 18	MFD101BM1	Front Bumper with Grille Guard	Yes	--	No	Yes
			MFD101BMN	Front Bumper	Yes	--	No	Yes
			MBD101BMSL	Rear Bumper	Yes	--	--	--
Toyota								
Tacoma	--	16 - 22	MFT16MBM1	Front Bumper with Grille Guard	Yes	No	Yes	Yes
			MFT16MBMN	Front Bumper	Yes	Yes	Yes	Yes
			MBT16MBMSL	Rear Bumper	Yes	--	--	--
Tundra	--	14 - 21	MFT14HBM1	Front Bumper with Grille Guard	Yes	No	Yes	Yes
			MFT14HBMN	Front Bumper	Yes	Yes	Yes	Yes
			MBT14HBMSL	Rear Bumper	Yes	--	--	--

LEGEND™

SERIES





WHAT MAKES A LEGEND?

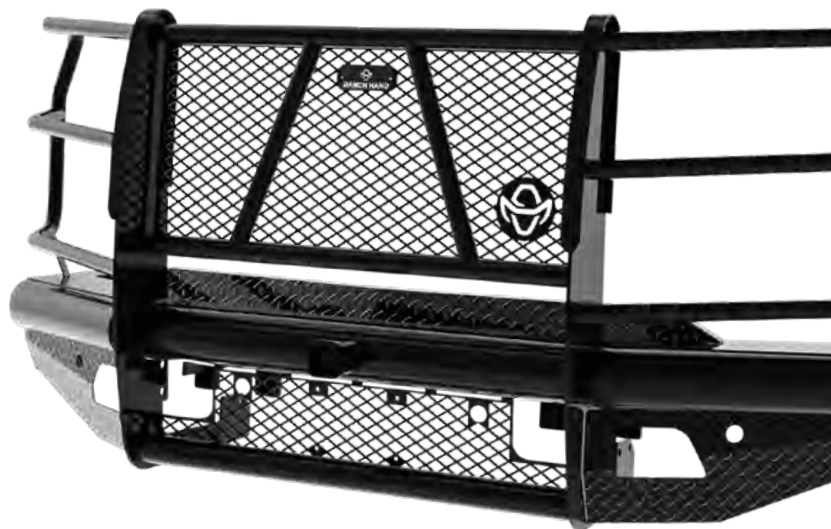
Legends aren't born — they're made. The Legend™ series is made for those who work hard. Fabricated by hand in Shiner, Texas, the Legend™ series is built tough and makes a statement that signals dependability and punctuality. It's an icon — it delivers on the job, won't punch out early and will give you one less thing to worry about.

LEGEND™ FRONT BUMPER WITH GRILLE GUARD

Product Details

- The original, heavy-duty, 'ranch-style' front bumper made for hardworking trucks
- Built from 4" schedule-40 pipe and diamond-plate steel for dependable strength
- One-piece welded fabrication prevents rattling, while perforated 12-gauge steel protects the truck grille from brush and road debris
- Constructed with 5/16" uprights for high-tensile strength and durability
- Frame-mounted in four locations to reduce vibration and ensure a secure fit
- Comes standard with 2" receiver for tow hook, winch mount or other attachments
- Super polyester black powder coat finish for superior corrosion resistance
- Retains factory fog lights and tow hooks, if equipped
- Compatible with front-facing sensors (Options available to accommodate front-facing cameras)

See page 26 for application information



Built for hard work and the ranching lifestyle.



The Legend front bumper with grille guard is the original, heavy-duty, "ranch style" front bumper, and is built to handle the day-to-day rigors of a hardworking truck



Features thick 4" schedule-40 pipe that fully contours and protects the front end and thick, diamond-plate steel that provides solid, reliable strength



The bumper and grille guard are fully welded together as one piece with no expanded metal, eliminating the rattling that takes place with multiple pieces

Finish & Material

Finish:
Gloss black powder coat

Material:
Carbon steel



Chevrolet 3500HD



Ram 3500 Longhorn

LEGEND™ BULLNOSE FRONT BUMPER

Product Details

- The original, heavy-duty, 'ranch-style' front bumper made for hard-working trucks
- Features 2" thick, 12-gauge bullnose for increased protection
- Contoured skirts to protect the underside of the truck
- Built from 4" schedule-40 pipe and diamond-plate steel for dependable strength
- One-piece welded fabrication prevents rattling and loosening of pieces
- Frame-mounted in four locations to reduce vibration and ensure a secure fit
- Comes standard with 2" receiver for tow hook, winch mount or other attachments
- Super polyester black powder coat finish for superior corrosion resistance
- Retains factory fog lights and tow hooks, if equipped
- Compatible with front-facing cameras and sensors
- Includes light mounting tabs and license plate mounting holes

See page 26 for application information



Add some serious style and attitude to your truck.



The Legend bullnose front bumper features 2", 12-gauge tubing and is designed with off-road, rally styling and contoured skirts that protect the underside of the truck



Features thick, 4" schedule-40 pipe that fully contours and protects the front end and thick diamond-plate steel that provides solid, reliable strength



Features a standard 2" receiver for towing or mounting a winch or other accessories, and includes tabs for mounting lights and pre-drilled license plate holes

Finish & Material

Finish:
Gloss black powder coat

Material:
Diamond-plate steel



Chevrolet 2500HD



Ford F-250

LEGEND™ REAR BUMPER

Product Details

- The original, heavy-duty, 'ranch-style' rear bumper made for hardworking trucks
- Built from 4" schedule-40 pipe and diamond-plate steel for dependable strength
- Tested for 10,000 lbs. towing capacity and 1,000 lbs. tongue weight (select models only rated for 5,000 lbs.)
- Super polyester black powder coat finish for superior corrosion resistance
- Optional bolt-on receiver hitch #RHUOO1BLB (see page 24)
- Select models come standard with LED lights
- Do not exceed vehicle towing capacity
- Integrated cut-out for 6- or 7-way trailer socket (varies by model)

See page 26 for application information



Made to tackle every tough job that comes its way.



The Legend rear bumper is the original, heavy-duty, "ranch style" front bumper, and is built to handle the day-to-day rigors of a hardworking truck



Features thick, 4" schedule-40 pipe that fully contours and protects the rear end and thick diamond-plate steel that provides solid, reliable strength



This rear bumper is V-5 tested up to 10,000 lbs. towing capacity (5,000 lbs. on select models) with an optional bolt-on receiver hitch (#RHUOO1BLB, see page 24)

Finish & Material



Finish:
Gloss black
powder coat

Material:
Carbon steel



Ford F-250

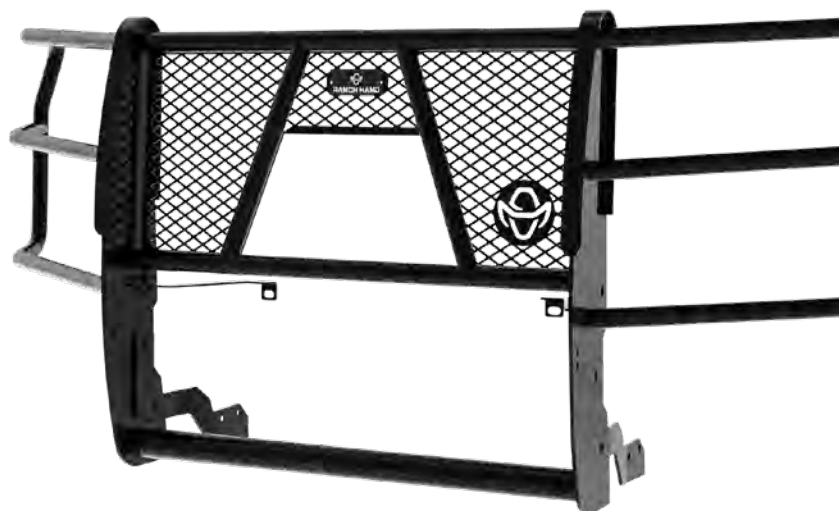


LEGEND™ GRILLE GUARD

Product Details

- Constructed from 12-gauge steel tubing to amplify strength and sturdiness
- One-piece welded fabrication prevents rattling and perforated 12-gauge steel protects the truck grille
- Frame-mounted in four locations to reduce vibration and ensure a secure fit
- Custom punched grille inserts to match truck manufacturer's grille pattern
- Wraparound brush guards for greater front-end coverage and a streamlined look
- Super polyester black powder coat finish for superior corrosion resistance
- Compatible with front-facing sensors (Options available to accommodate front-facing cameras)
- Vehicle-specific mesh pattern for OE look

See page 26 for application information



Unwavering strength and durability.



Made with 12-gauge tubing and 5/16" uprights for high tensile strength that provides unrivaled toughness and durability



Fully-welded into one piece with no expanded metal, eliminating the troublesome rattling that comes from multiple pieces



Frame-mounted in four locations for a secure fit and features custom punched grille inserts to match the truck's grille pattern

Finish & Material

Finish:
Gloss black
powder coat
Material:
Carbon steel



Ram 1500



Ford F-250 Super Duty



BUMPER ACCESSORIES

6" Oval LED Light

- Designed for use as a back-up light or flood light for extra night-time visibility
- 6" wide, flush-mount style flood light with oval design provides improved rear visibility
- Constructed with LEDs for bright, long-lasting light
- Fitted with blunt-cut wires to be readily installed
- Includes one LED light only

Part #	Fits
LEDLIGHTCLEAR	Select Legend and Sport rear bumpers



LEDLIGHTCLEAR



2" Bolt-On Bumper Hitch Receiver Tube

- Rated for 10,000 lbs. GTW and 1,000 lbs. TW
- Standard 2" receiver tube accepts a ball mount, tow hook or other accessories
- May reduce gross trailer weight and tongue weight capacity of the vehicle

Part #	Fits
RHU001BLB	Legend rear bumper



RHU001BLB



Universal Rubber Upright Pads

- Rubber stripping to protect grille guard uprights and finish
- Constructed from tough black rubber
- Easy, friction-fit installation
- Includes two rubber strips

Part #	Fits
RUPU	Legend grille guard and Legend, Summit and Sport front bumpers with grille guard



RUPU



LED License Plate Light

- Provides nighttime visibility to license plate
- Fits Ranch Hand rear bumper license plate light hole
- Constructed with LEDs for bright, long-lasting light
- Fitted with blunt-cut wires to be readily installed
- Includes one LED light only



LEDLICENSELIGHT

Part #	Fits
LEDLICENSELIGHT	Midnight, Legend and Sport rear bumpers

Sensor Relocation Bracket Kits

- Intended for relocating vehicle sensors after grille guard installation
- Strong 14-gauge steel construction
- Includes one relocation bracket, carriage bolts, nuts, pigtails and grommets
- Grille guard sold separately
- Fits select vehicle applications

See ranchhand.com for application information





Ford F-250 Super Duty



Toyota Tacoma



Scan for current applications
or visit ranchhand.com



LEGEND™ SERIES APPLICATION GUIDE

Legend Series Bumpers & Grille Guard

Make / Model	Style	Years	Footnote	Part #	Product Description	Lights	Retains			
							Park Sens	Frnt Cam	Tow Hks	Fog Lts
Chevrolet										
Avalanche	--	07 - 13	--	GGC07HBL1	Grille Guard	--	No	No	Yes	Yes
Avalanche 1500 / 2500	Excl. models with cladding	03 - 06	--	GGC06HBL1	Grille Guard	--	No	No	Yes	Yes
Blazer	--	92 - 99	--	FBC881BLR	Front Bumper with Grille Guard	--	No	No	Yes	No
			--	GGC881BL1	Grille Guard	--	No	No	Yes	Yes
C/K 1500	--	88 - 99	--	FBC881BLR	Front Bumper with Grille Guard	--	No	No	Yes	No
			--	GGC881BL1	Grille Guard	--	No	No	Yes	Yes
C/K 2500 / 3500	--	88 - 00	--	FBC881BLR	Front Bumper with Grille Guard	--	No	No	Yes	No
			--	GGC881BL1	Grille Guard	--	No	No	Yes	Yes
Silverado 1500	Excl. diesel	19 - 21	1	GGC19HBL1C	Grille Guard	--	No	Yes	Yes	Yes
			1	GGC19HBL1	Grille Guard	--	No	No	Yes	Yes
	--	16 - 18	2	GGC16HBL1	Grille Guard	--	No	No	Yes	Yes
		14 - 15	2	GGC14HBL1S	Grille Guard	--	No	No	Yes	Yes
		07 - 13	--	GGC08HBL1	Grille Guard	--	No	No	Yes	Yes
		03 - 06	--	GGC06HBL1	Grille Guard	--	No	No	Yes	Yes
		99 - 02	--	GGC99HBL1	Grille Guard	--	No	No	Yes	Yes
		99 - 06	11, 12, 14	BBC998BLS	Rear Bumper	No	No	--	--	--
Silverado 1500 Classic	--	07 - 07	--	GGC06HBL1	Grille Guard	--	No	No	Yes	Yes
			11, 12, 14	BBC998BLS	Rear Bumper	No	No	--	--	--
Silverado 1500 LD	--	19 - 19	2	GGC16HBL1	Grille Guard	--	No	No	Yes	Yes
Silverado 1500 LTD	Excl. diesel	22 - 22	1	GGC19HBL1C	Grille Guard	--	No	Yes	Yes	Yes
			1	GGC19HBL1	Grille Guard	--	No	No	Yes	Yes
Silverado 1500 HD	--	01 - 06	11, 12, 14	BBC998BLS	Rear Bumper	No	No	--	--	--

1. Use PSC19HBL1 for sensor accom.
2. Use PSC16HBL1 for sensor accom.
3. Use PSG19HBL1 for sensor accom.
4. Sport, Express, and Tradesman may require bumper trimming

5. Add'l GGF114BP bolt pack required
6. May trigger parking sensor on Denali
7. Denali requires grille trimming
8. Incl. knock out for engine block heater plug

9. Use PSF19MBP for sensor accommodation
10. Tow rating of 5,000 / 500 lbs.
11. Tow rating of 10,000 / 1,000 lbs.

12. Skirt length 8"
13. Skirt length 10"
14. Retains fact. rec.
15. Does not retain factory receiver

Legend Series Bumpers & Grille Guard

Make / Model	Style	Years	Footnote	Part #	Product Description	Lights	Retains				
							Park Sens	Frnt Cam	Tow Hks	Fog Lts	
Chevrolet (continued)											
Silverado 1500 HD Classic	--	07 - 07	11, 12, 14	BBC998BLS	Rear Bumper	No	No	--	--	--	
Silverado 2500	Excl. 2500 HD	99 - 04	11, 12, 14	BBC998BLS	Rear Bumper	No	No	--	--	--	
Silverado 2500 HD	--	20 - 22	--	BTC201BLR	Bullnose Front Bumper	--	Yes	Yes	Yes	Yes	
			--	FBC201BLRC	Front Bumper with Grille Guard	--	Yes	Yes	Yes	Yes	
			--	FBC201BLR	Front Bumper with Grille Guard	--	Yes	No	Yes	Yes	
			3	GGC201BL1C	Grille Guard	--	No	Yes	Yes	Yes	
			3	GGC201BL1	Grille Guard	--	No	No	Yes	Yes	
		15 - 19	--	BTC151BLR	Bullnose Front Bumper	--	Yes	No	Yes	Yes	
			--	FBC151BLR	Front Bumper with Grille Guard	--	Yes	No	Yes	Yes	
			--	GGC151BL1	Grille Guard	--	No	No	Yes	Yes	
			--	GGC151BLS	Grille Guard	--	Yes	No	Yes	Yes	
			--	BTC111BLR	Bullnose Front Bumper	--	No	No	Yes	Yes	
		11 - 14	--	FBC111BLR	Front Bumper with Grille Guard	--	No	No	Yes	Yes	
			--	GGC111BL1	Grille Guard	--	No	No	Yes	Yes	
			11, 13, 14	BBC110BLSL	Rear Bumper	Yes	Yes	--	--	--	
			07 - 10	--	BTC081BLR	Bullnose Front Bumper	--	No	No	Yes	Yes
				--	FBC081BLR	Front Bumper with Grille Guard	--	No	No	Yes	Yes
		11, 13, 14		BBC080BLSL	Rear Bumper	Yes	Yes	--	--	--	
		--		GGC081BL1	Grille Guard	--	No	No	Yes	Yes	
		03 - 06	--	BTC031BLR	Bullnose Front Bumper	--	No	No	Yes	Yes	
			--	FBC031BLR	Front Bumper with Grille Guard	--	No	No	Yes	Yes	
			--	GGC031BL1	Grille Guard	--	No	No	Yes	Yes	
		01 - 06	11, 13, 14	BBC010BLL	Rear Bumper	Yes	No	--	--	--	
		01 - 02	--	FBC011BLR	Front Bumper with Grille Guard	--	No	No	No	No	
			--	GGC011BL1	Grille Guard	--	No	No	Yes	Yes	
		Silverado 2500 HD Classic	--	07 - 07	--	BTC031BLR	Bullnose Front Bumper	--	No	No	Yes
--	FBC031BLR				Front Bumper with Grille Guard	--	No	No	Yes	Yes	
--	GGC031BL1				Grille Guard	--	No	No	Yes	Yes	
11, 13, 14	BBC010BLL				Rear Bumper	Yes	No	--	--	--	

1. Use PSC19HBL1 for sensor accom.
2. Use PSC16HBL1 for sensor accom.
3. Use PSG19HBL1 for sensor accom.
4. Sport, Express, and Tradesman may require bumper trimming

5. Add'l GGF114BP bolt pack required
6. May trigger parking sensor on Denali
7. Denali requires grille trimming
8. Incl. knock out for engine block heater plug

9. Use PSF19MBP for sensor accommodation
10. Tow rating of 5,000 / 500 lbs.
11. Tow rating of 10,000 / 1,000 lbs.

12. Skirt length 8"
13. Skirt length 10"
14. Retains fact. rec.
15. Does not retain factory receiver

Legend Series Bumpers & Grille Guard

Make / Model	Style	Years	Footnote	Part #	Product Description	Lights	Retains			
							Park Sens	Frnt Cam	Tow Hks	Fog Lts
Chevrolet (continued)										
Silverado 3500	--	03 - 06	--	BTC031BLR	Bullnose Front Bumper	--	No	No	Yes	Yes
			--	FBC031BLR	Front Bumper with Grille Guard	--	No	No	Yes	Yes
			--	GGC031BL1	Grille Guard	--	No	No	Yes	Yes
		01 - 02	--	FBC011BLR	Front Bumper with Grille Guard	--	No	No	No	No
			--	GGC011BL1	Grille Guard	--	No	No	Yes	Yes
Silverado 3500 Classic	--	07 - 07	--	BTC031BLR	Bullnose Front Bumper	--	No	No	Yes	Yes
			--	FBC031BLR	Front Bumper with Grille Guard	--	No	No	Yes	Yes
			--	GGC031BL1	Grille Guard	--	No	No	Yes	Yes
Silverado 3500 HD	--	20 - 22	--	BTC201BLR	Bullnose Front Bumper	--	Yes	Yes	Yes	Yes
			--	FBC201BLRC	Front Bumper with Grille Guard	--	Yes	Yes	Yes	Yes
			--	FBC201BLR	Front Bumper with Grille Guard	--	Yes	No	Yes	Yes
			3	GGC201BL1C	Grille Guard	--	No	Yes	Yes	Yes
			3	GGC201BL1	Grille Guard	--	No	No	Yes	Yes
		15 - 19	--	BTC151BLR	Bullnose Front Bumper	--	Yes	No	Yes	Yes
			--	FBC151BLR	Front Bumper with Grille Guard	--	Yes	No	Yes	Yes
			--	GGC151BL1	Grille Guard	--	No	No	Yes	Yes
			--	GGC151BLS	Grille Guard	--	Yes	No	Yes	Yes
		11 - 14	--	BTC111BLR	Bullnose Front Bumper	--	No	No	Yes	Yes
			--	FBC111BLR	Front Bumper with Grille Guard	--	No	No	Yes	Yes
			--	GGC111BL1	Grille Guard	--	No	No	Yes	Yes
			11, 13, 14	BBC110BLSL	Rear Bumper	Yes	Yes	--	--	--
		07 - 10	--	BTC081BLR	Bullnose Front Bumper	--	No	No	Yes	Yes
			--	FBC081BLR	Front Bumper with Grille Guard	--	No	No	Yes	Yes
			11, 13, 14	BBC080BLSL	Rear Bumper	Yes	Yes	--	--	--
			--	GGC081BL1	Grille Guard	--	No	No	Yes	Yes
Suburban	--		21 - 21	1	GGC21SBL1C	Grille Guard	--	No	Yes	Yes
		1		GGC21SBL1	Grille Guard	--	No	No	Yes	Yes
	Excl. Z71	15 - 20	--	GGC15HBL1	Grille Guard	--	No	No	Yes	Yes
	--	07 - 14	--	GGC07HBL1	Grille Guard	--	No	No	Yes	Yes
		00 - 06	--	GGC99HBL1	Grille Guard	--	No	No	Yes	Yes
			11, 12, 14	BBC008BLS	Rear Bumper	No	No	--	--	--
		92 - 99	--	FBC881BLR	Front Bumper with Grille Guard	--	No	No	Yes	No
--			GGC881BL1	Grille Guard	--	No	No	Yes	Yes	

1. Use PSC19HBL1 for sensor accom.
2. Use PSC16HBL1 for sensor accom.
3. Use PSG19HBL1 for sensor accom.
4. Sport, Express, and Tradesman may require bumper trimming

5. Add'l GGF114BP bolt pack required
6. May trigger parking sensor on Denali
7. Denali requires grille trimming
8. Incl. knock out for engine block heater plug

9. Use PSF19MBP for sensor accommodation
10. Tow rating of 5,000 / 500 lbs.
11. Tow rating of 10,000 / 1,000 lbs.

12. Skirt length 8"
13. Skirt length 10"
14. Retains fact. rec.
15. Does not retain factory receiver

Legend Series Bumpers & Grille Guard

Make / Model	Style	Years	Footnote	Part #	Product Description	Lights	Retains			
							Park Sens	Frnt Cam	Tow Hks	Fog Lts
Chevrolet (continued)										
Suburban 2500	--	07 - 14	--	GGC07TBL1	Grille Guard	--	No	No	Yes	Yes
		00 - 06	11, 12, 14	BBC008BLS	Rear Bumper	No	No	--	--	--
Tahoe	--	21 - 21	--	GGC21SBL1C	Grille Guard	--	Yes	Yes	Yes	Yes
			--	GGC21SBL1	Grille Guard	--	Yes	No	Yes	Yes
	Excl. Z71	15 - 20	--	GGC15HBL1	Grille Guard	--	No	No	Yes	Yes
	--	07 - 14	--	GGC07HBL1	Grille Guard	--	No	No	Yes	Yes
		00 - 06	--	GGC99HBL1	Grille Guard	--	No	No	Yes	Yes
			11, 12, 14	BBC008BLS	Rear Bumper	No	No	--	--	--
		92 - 99	--	FBC881BLR	Front Bumper with Grille Guard	--	No	No	Yes	No
		--	--	GGC881BL1	Grille Guard	--	No	No	Yes	Yes
Dodge										
Ram 1500	--	09 - 10	4	GGD09HBL1	Grille Guard	--	No	No	Yes	Yes
		06 - 08	--	BDT061BLR	Bullnose Front Bumper	--	No	No	Yes	Yes
			--	FBD061BLR	Front Bumper with Grille Guard	--	No	No	Yes	Yes
	Excl. extended crew cab	06 - 08	--	GGD06HBL1	Grille Guard	--	No	No	Yes	Yes
	--	03 - 08	--	GGD061BL1	Grille Guard	--	No	No	Yes	Yes
		03 - 08	11, 13, 15	BBD030BLL	Rear Bumper	Yes	No	--	--	--
		02 - 05	--	GGD02HBL1	Grille Guard	--	No	No	No	Yes
		94 - 01	11, 12, 14	BBD948BLS	Rear Bumper	No	No	--	--	--
	Excl. Sport	94 - 01	--	BDT941BLR	Bullnose Front Bumper	--	No	No	No	No
		94 - 01	--	FBD941BLR	Front Bumper with Grille Guard	--	No	No	No	No
		94 - 01	--	GGD941BL1	Grille Guard	--	No	No	No	Yes
Ram 2500 / 3500 (continued on following page)	--	10 - 10	11, 13, 15	BBD100BLL	Rear Bumper	Yes	No	--	--	--
			11, 13, 15	BBD100BLSS	Rear Bumper	No	Yes	--	--	--
			--	BDT101BLRS	Bullnose Front Bumper	--	Yes	No	Yes	Yes
			--	FBD101BLRS	Front Bumper with Grille Guard	--	Yes	No	Yes	Yes
			--	GGD101BL1	Grille Guard	--	No	No	Yes	Yes
		06 - 09	--	BDT061BLR	Bullnose Front Bumper	--	No	No	Yes	Yes
			--	FBD061BLR	Front Bumper with Grille Guard	--	No	No	Yes	Yes
		03 - 09	11, 13, 15	BBD030BLL	Rear Bumper	Yes	No	--	--	--
			--	GGD061BL1	Grille Guard	--	No	No	Yes	Yes
		03 - 05	--	BDT031BLR	Bullnose Front Bumper	--	No	No	Yes	Yes
		--	--	FBD031BLR	Front Bumper with Grille Guard	--	No	No	Yes	Yes

1. Use PSC19HBL1 for sensor accom.
2. Use PSC16HBL1 for sensor accom.
3. Use PSG19HBL1 for sensor accom.
4. Sport, Express, and Tradesman may require bumper trimming

5. Add'l GGF114BP bolt pack required
6. May trigger parking sensor on Denali
7. Denali requires grille trimming
8. Incl. knock out for engine block heater plug

9. Use PSF19MBP for sensor accommodation
10. Tow rating of 5,000 / 500 lbs.
11. Tow rating of 10,000 / 1,000 lbs.

12. Skirt length 8"
13. Skirt length 10"
14. Retains fact. rec.
15. Does not retain factory receiver

Legend Series Bumpers & Grille Guard

Make / Model	Style	Years	Footnote	Part #	Product Description	Lights	Retains			
							Park Sens	Frnt Cam	Tow Hks	Fog Lts
Dodge (continued)										
Ram 2500 / 3500 (continued from the previous page)	--	98 - 02	--	BTD941BLR	Bullnose Front Bumper	--	No	No	No	No
			--	FBD941BLR	Front Bumper with Grille Guard	--	No	No	No	No
		94 - 02	11, 12, 14	BBD948BLS	Rear Bumper	No	No	--	--	--
			--	GGD941BL1	Grille Guard	--	No	No	No	No
Ram 4500 / 5500	--	10 - 10	--	BTD101BLRS	Bullnose Front Bumper	--	Yes	No	Yes	Yes
			--	FBD101BLRS	Front Bumper with Grille Guard	--	Yes	No	Yes	Yes
Ford										
Bronco	With square headlights	92 - 96	--	FBF921BLR	Front Bumper with Grille Guard	--	No	No	No	No
Excursion	--	05 - 05	--	BTF051BLR	Bullnose Front Bumper	--	No	No	Yes	Yes
			--	FBF051BLR	Front Bumper with Grille Guard	--	No	No	Yes	Yes
			--	GGF051BL1	Grille Guard	--	No	No	Yes	Yes
		00 - 04	--	BTF991BLR	Bullnose Front Bumper	--	No	No	Yes	Yes
			--	FBF991BLR	Front Bumper with Grille Guard	--	No	No	Yes	No
			--	GGF99SBL1	Grille Guard	--	No	No	Yes	Yes
Expedition	--	18 - 21	--	GGF19HBL1C	Grille Guard	--	Yes	Yes	Yes	Yes
			--	GGF19HBL1	Grille Guard	--	Yes	No	Yes	Yes
		07 - 17	--	GGF07HBL1	Grille Guard	--	No	No	Yes	Yes
	4WD	99 - 02	--	GGF994BL1	Grille Guard	--	No	No	Yes	Yes
	--	97 - 02	--	FBF9X1BLR	Front Bumper with Grille Guard	--	No	No	Yes	No
Explorer	Police Interceptor	16 - 19	--	GGF16EBL1	Grille Guard	--	No	No	No	Yes
F-150	--	15 - 22	--	GGF21HBL1C	Grille Guard	--	Yes	Yes	Yes	Yes
			--	GGF21HBL1	Grille Guard	--	Yes	Yes	Yes	Yes
		09 - 14	--	GGF09HBL1	Grille Guard	--	No	No	Yes	Yes
		04 - 08	--	GGF06HBL1	Grille Guard	--	No	No	Yes	Yes
	4WD	99 - 03	--	GGF994BL1	Grille Guard	--	No	No	Yes	Yes
	With oval headlights	97 - 03	--	FBF9X1BLR	Front Bumper with Grille Guard	--	No	No	Yes	No
	With square headlights	92 - 96	--	FBF921BLR	Front Bumper with Grille Guard	--	No	No	No	No
	--	81 - 96	10, 12, 14	BBF928BLS	Rear Bumper	No	No	--	--	--
F-150 Heritage	--	04 - 04	--	FBF9X1BLR	Front Bumper with Grille Guard	--	No	No	Yes	No
	4WD	04 - 04	--	GGF994BL1	Grille Guard	--	No	No	Yes	Yes

1. Use PSC19HBL1 for sensor accom.
2. Use PSC16HBL1 for sensor accom.
3. Use PSG19HBL1 for sensor accom.
4. Sport, Express, and Tradesman may require bumper trimming

5. Add'l GGF114BP bolt pack required
6. May trigger parking sensor on Denali
7. Denali requires grille trimming
8. Incl. knock out for engine block heater plug

9. Use PSF19MBP for sensor accommodation
10. Tow rating of 5,000 / 500 lbs.
11. Tow rating of 10,000 / 1,000 lbs.

12. Skirt length 8"
13. Skirt length 10"
14. Retains fact. rec.
15. Does not retain factory receiver

Legend Series Bumpers & Grille Guard

Make / Model	Style	Years	Footnote	Part #	Product Description	Lights	Retains			
							Park Sens	Frnt Cam	Tow Hks	Fog Lts
Ford (continued)										
F-250	4WD	99 - 03	--	GGF994BL1	Grille Guard	--	No	No	Yes	Yes
	With oval headlights	97 - 99	--	FBF9X1BLR	Front Bumper with Grille Guard	--	No	No	Yes	No
	With square headlights	92 - 96	--	FBF921BLR	Front Bumper with Grille Guard	--	No	No	No	No
	--	81 - 96	10, 12, 14	BBF928BLS	Rear Bumper	No	No	--	--	--
F-250 / F-350 Super Duty	--	17 - 22	11, 12, 14	BBF171BLSS	Rear Bumper	No	Yes	--	--	--
			--	BTF201BLR	Bullnose Front Bumper	--	Yes	Yes	Yes	Yes
			--	FBF201BLRC	Front Bumper with Grille Guard	--	Yes	Yes	Yes	Yes
			--	FBF201BLR	Front Bumper with Grille Guard	--	Yes	No	Yes	Yes
	Excl. Tremor pkg with winch	17 - 22	--	GGF201BL1C	Grille Guard	--	Yes	Yes	Yes	Yes
			--	GGF201BL1	Grille Guard	--	Yes	No	Yes	Yes
	--	11 - 16	--	BTF111BLR	Bullnose Front Bumper	--	Yes	No	Yes	Yes
			--	FBF111BLR	Front Bumper with Grille Guard	--	No	No	Yes	Yes
			--	GGF111BL1	Grille Guard	--	No	No	Yes	Yes
		08 - 15	11, 13, 14	BBF080BLSL	Rear Bumper	Yes	Yes	--	--	--
		08 - 10	--	BTF081BLR	Bullnose Front Bumper	--	No	No	Yes	Yes
			--	FBF081BLR	Front Bumper with Grille Guard	--	No	No	Yes	Yes
			--	GGF081BL1	Grille Guard	--	No	No	Yes	Yes
		05 - 07	--	BTF051BLR	Bullnose Front Bumper	--	No	No	Yes	Yes
			--	FBF051BLR	Front Bumper with Grille Guard	--	No	No	Yes	Yes
			--	GGF051BL1	Grille Guard	--	No	No	Yes	Yes
		99 - 07	11, 13, 14	BBF050BLL	Rear Bumper	Yes	No	--	--	--
		99 - 04	--	GGF99SBL1	Grille Guard	--	No	No	Yes	Yes
	--		BTF991BLR	Bullnose Front Bumper	--	No	No	Yes	Yes	
	--		FBF991BLR	Front Bumper with Grille Guard	--	No	No	Yes	Yes	
F-350	--	81 - 97	10, 12, 14	BBF928BLS	Rear Bumper	No	No	--	--	--
	With square headlights	92 - 97	--	FBF921BLR	Front Bumper with Grille Guard	--	No	No	No	No

1. Use PSC19HBL1 for sensor accom.
2. Use PSC16HBL1 for sensor accom.
3. Use PSG19HBL1 for sensor accom.
4. Sport, Express, and Tradesman may require bumper trimming

5. Add'l GGF114BP bolt pack required
6. May trigger parking sensor on Denali
7. Denali requires grille trimming
8. Incl. knock out for engine block heater plug

9. Use PSF19MBP for sensor accommodation
10. Tow rating of 5,000 / 500 lbs.
11. Tow rating of 10,000 / 1,000 lbs.

12. Skirt length 8"
13. Skirt length 10"
14. Retains fact. rec.
15. Does not retain factory receiver

Legend Series Bumpers & Grille Guard

Make / Model	Style	Years	Footnote	Part #	Product Description	Lights	Retains			
							Park Sens	Frnt Cam	Tow Hks	Fog Lts
Ford (continued)										
F-450 Super Duty	--	17 - 22	11, 12, 14	BBF171BLSS	Rear Bumper	No	Yes	--	--	--
			--	BTF201BLR	Bullnose Front Bumper	--	Yes	Yes	Yes	Yes
	Excl. Tremor pkg with winch	17 - 22	--	GGF201BL1C	Grille Guard	--	Yes	Yes	Yes	Yes
		17 - 22	--	GGF201BL1	Grille Guard	--	Yes	No	Yes	Yes
	--	11 - 16	--	BTF111BLR	Bullnose Front Bumper	--	Yes	No	Yes	Yes
			--	FBF111BLR	Front Bumper with Grille Guard	--	No	No	Yes	Yes
			5	GGF111BL1	Grille Guard	--	No	No	Yes	Yes
	08 - 10	--	BTF081BLR	Bullnose Front Bumper	--	No	No	Yes	Yes	
		--	FBF081BLR	Front Bumper with Grille Guard	--	No	No	Yes	Yes	
		--	GGF081BL1	Grille Guard	--	No	No	Yes	Yes	
	05 - 07	--	BTF051BLR	Bullnose Front Bumper	--	No	No	Yes	Yes	
		--	FBF051BLR	Front Bumper with Grille Guard	--	No	No	Yes	Yes	
		--	GGF051BL1	Grille Guard	--	No	No	Yes	Yes	
	99 - 04	--	GGF99SBL1	Grille Guard	--	No	No	Yes	Yes	
		--	BTF991BLR	Bullnose Front Bumper	--	No	No	Yes	Yes	
		--	FBF991BLR	Front Bumper with Grille Guard	--	No	No	Yes	Yes	
F-550 Super Duty	--	17 - 22	--	BTF201BLR	Bullnose Front Bumper	--	Yes	Yes	Yes	Yes
			--	GGF201BL1C	Grille Guard	--	Yes	Yes	Yes	Yes
	Excl. Tremor pkg with winch	17 - 22	--	GGF201BL1	Grille Guard	--	Yes	No	Yes	Yes
			--	BTF111BLR	Bullnose Front Bumper	--	Yes	No	Yes	Yes
	--	11 - 16	--	BTF111BLR	Bullnose Front Bumper	--	Yes	No	Yes	Yes
			--	FBF111BLR	Front Bumper with Grille Guard	--	No	No	Yes	Yes
			5	GGF111BL1	Grille Guard	--	No	No	Yes	Yes
	08 - 10	--	BTF081BLR	Bullnose Front Bumper	--	No	No	Yes	Yes	
		--	FBF081BLR	Front Bumper with Grille Guard	--	No	No	Yes	Yes	
		--	GGF081BL1	Grille Guard	--	No	No	Yes	Yes	
	05 - 07	--	BTF051BLR	Bullnose Front Bumper	--	No	No	Yes	Yes	
		--	FBF051BLR	Front Bumper with Grille Guard	--	No	No	Yes	Yes	
		--	GGF051BL1	Grille Guard	--	No	No	Yes	Yes	
	99 - 04	--	GGF99SBL1	Grille Guard	--	No	No	Yes	Yes	
		--	BTF991BLR	Bullnose Front Bumper	--	No	No	Yes	Yes	
		--	FBF991BLR	Front Bumper with Grille Guard	--	No	No	Yes	Yes	
Ranger	--	19 - 22	9	GGF19MBL1	Grille Guard	--	No	--	Yes	Yes

1. Use PSC19HBL1 for sensor accom.
2. Use PSC16HBL1 for sensor accom.
3. Use PSG19HBL1 for sensor accom.
4. Sport, Express, and Tradesman may require bumper trimming

5. Add'l GGF114BP bolt pack required
6. May trigger parking sensor on Denali
7. Denali requires grille trimming
8. Incl. knock out for engine block heater plug

9. Use PSF19MBP for sensor accommodation
10. Tow rating of 5,000 / 500 lbs.
11. Tow rating of 10,000 / 1,000 lbs.

12. Skirt length 8"
13. Skirt length 10"
14. Retains fact. rec.
15. Does not retain factory receiver

Legend Series Bumpers & Grille Guard

Make / Model	Style	Years	Footnote	Part #	Product Description	Lights	Retains			
							Park Sens	Frnt Cam	Tow Hks	Fog Lts
GMC										
C/K 1500	--	88 - 99	--	GGC881BL1	Grille Guard	--	No	No	Yes	Yes
			--	FBC881BLR	Front Bumper with Grille Guard	--	No	No	Yes	No
C/K 2500 / 3500	--	88 - 00	--	GGC881BL1	Grille Guard	--	No	No	Yes	Yes
			--	FBC881BLR	Front Bumper with Grille Guard	--	No	No	Yes	No
Jimmy	--	92 - 99	--	GGC881BL1	Grille Guard	--	No	No	Yes	Yes
			--	FBC881BLR	Front Bumper with Grille Guard	--	No	No	Yes	No
Sierra 1500	--	19 - 21	3	GGG19HBL1C	Grille Guard	--	No	Yes	Yes	Yes
			3	GGG19HBL1	Grille Guard	--	No	No	Yes	Yes
		16 - 18	2	GGG16HBL1	Grille Guard	--	No	No	Yes	Yes
		14 - 15	--	GGG14HBL1	Grille Guard	--	No	No	Yes	Yes
		07 - 13	7	GGG08HBL1	Grille Guard	--	No	No	Yes	Yes
		03 - 06	--	GGG03HBL1	Grille Guard	--	No	No	Yes	Yes
		99 - 02	--	GGG99HBL1	Grille Guard	--	No	No	Yes	Yes
		99 - 06	11, 12, 14	BBC998BLS	Rear Bumper	No	No	--	--	--
Sierra 1500 Classic	--	07 - 07	--	GGG03HBL1	Grille Guard	--	No	No	Yes	Yes
			11, 12, 14	BBC998BLS	Rear Bumper	No	No	--	--	--
Sierra 1500 HD	--	01 - 06	11, 12, 14	BBC998BLS	Rear Bumper	No	No	--	--	--
Sierra 1500 HD Classic	--	07 - 07	11, 12, 14	BBC998BLS	Rear Bumper	No	No	--	--	--
Sierra 1500 Limited	--	22 - 22	3	GGG19HBL1C	Grille Guard	--	No	Yes	Yes	Yes
			3	GGG19HBL1	Grille Guard	--	No	No	Yes	Yes
		19 - 19	2	GGG16HBL1	Grille Guard	--	No	No	Yes	Yes
Sierra 2500	Excl. 2500HD	99 - 04	11, 12, 14	BBC998BLS	Rear Bumper	No	No	--	--	--
Sierra 2500 HD (continued on following page)	--	20 - 22	3	GGG201BL1C	Grille Guard	--	No	Yes	Yes	Yes
			3	GGG201BL1	Grille Guard	--	No	No	Yes	Yes
			--	FBG201BLRC	Front Bumper with Grille Guard	--	Yes	Yes	Yes	Yes
			--	FBG201BLR	Front Bumper with Grille Guard	--	Yes	No	Yes	Yes
			8	BTG201BLR	Bullnose Front Bumper	--	Yes	Yes	Yes	Yes
		15 - 19	--	GGG151BL1	Grille Guard	--	No	No	Yes	Yes
			6	GGG151BLS	Grille Guard	--	Yes	No	Yes	Yes
			--	FBG151BLR	Front Bumper with Grille Guard	--	Yes	No	Yes	Yes
			--	BTG151BLR	Bullnose Front Bumper	--	Yes	No	Yes	Yes
		11 - 14	7	GGG111BL1	Grille Guard	--	No	No	Yes	Yes
			--	FBG111BLR	Front Bumper with Grille Guard	--	No	No	Yes	Yes
			--	BTG111BLR	Bullnose Front Bumper	--	No	No	Yes	Yes
			11, 13, 14	BBC110BLSL	Rear Bumper	Yes	Yes	--	--	--

1. Use PSC19HBL1 for sensor accom.
2. Use PSC16HBL1 for sensor accom.
3. Use PSG19HBL1 for sensor accom.
4. Sport, Express, and Tradesman may require bumper trimming

5. Add'l GGF114BP bolt pack required
6. May trigger parking sensor on Denali
7. Denali requires grille trimming
8. Incl. knock out for engine block heater plug

9. Use PSF19MBP for sensor accommodation
10. Tow rating of 5,000 / 500 lbs.
11. Tow rating of 10,000 / 1,000 lbs.

12. Skirt length 8"
13. Skirt length 10"
14. Retains fact. rec.
15. Does not retain factory receiver

Legend Series Bumpers & Grille Guard

Make / Model	Style	Years	Footnote	Part #	Product Description	Lights	Retains			
							Park Sens	Frnt Cam	Tow Hks	Fog Lts
GMC (continued)										
Sierra 2500 HD (continued from the previous page)	--	07 - 10	7	GGG081BL1	Grille Guard	--	No	No	Yes	Yes
			11, 13, 14	BBC080BLSL	Rear Bumper	Yes	Yes	--	--	--
			--	FBG081BLR	Front Bumper with Grille Guard	--	No	No	Yes	Yes
		03 - 06	--	GGG031BL1	Grille Guard	--	No	No	Yes	Yes
			--	FBG031BLR	Front Bumper with Grille Guard	--	No	No	Yes	Yes
		01 - 02	--	GGC011BL1	Grille Guard	--	No	No	Yes	Yes
01 - 06	11, 13, 14	BBC010BLL	Rear Bumper	Yes	No	--	--	--		
Sierra 2500 HD Classic	--	07 - 07	--	FBG031BLR	Front Bumper with Grille Guard	--	No	No	Yes	Yes
			--	GGG031BL1	Grille Guard	--	No	No	Yes	Yes
			11, 13, 14	BBC010BLL	Rear Bumper	Yes	No	--	--	--
Sierra 3500	--	03 - 06	--	FBG031BLR	Front Bumper with Grille Guard	--	No	No	Yes	Yes
		03 - 06	--	GGG031BL1	Grille Guard	--	No	No	Yes	Yes
		01 - 02	--	GGC011BL1	Grille Guard	--	No	No	Yes	Yes
Sierra 3500 Classic	--	07 - 07	--	GGG031BL1	Grille Guard	--	No	No	Yes	Yes
		07 - 07	--	FBG031BLR	Front Bumper with Grille Guard	--	No	No	Yes	Yes
Sierra 3500 HD	--	20 - 22	3	GGG201BL1C	Grille Guard	--	No	Yes	Yes	Yes
			3	GGG201BL1	Grille Guard	--	No	No	Yes	Yes
			--	FBG201BLRC	Front Bumper with Grille Guard	--	Yes	Yes	Yes	Yes
			--	FBG201BLR	Front Bumper with Grille Guard	--	Yes	No	Yes	Yes
			8	BTG201BLR	Bullnose Front Bumper	--	Yes	Yes	Yes	Yes
		15 - 19	--	GGG151BL1	Grille Guard	--	No	No	Yes	Yes
			6	GGG151BLS	Grille Guard	--	Yes	No	Yes	Yes
			--	FBG151BLR	Front Bumper with Grille Guard	--	Yes	No	Yes	Yes
			--	BTG151BLR	Bullnose Front Bumper	--	Yes	No	Yes	Yes
		11 - 14	7	GGG111BL1	Grille Guard	--	No	No	Yes	Yes
			--	FBG111BLR	Front Bumper with Grille Guard	--	No	No	Yes	Yes
			--	BTG111BLR	Bullnose Front Bumper	--	No	No	Yes	Yes
			11, 13, 14	BBC110BLSL	Rear Bumper	Yes	Yes	--	--	--
		07 - 10	7	GGG081BL1	Grille Guard	--	No	No	Yes	Yes
			11, 13, 14	BBC080BLSL	Rear Bumper	Yes	Yes	--	--	--
			--	FBG081BLR	Front Bumper with Grille Guard	--	No	No	Yes	Yes
Suburban	--	92 - 99	--	FBC881BLR	Front Bumper with Grille Guard	--	No	No	Yes	No
			--	GGC881BL1	Grille Guard	--	No	No	Yes	Yes

1. Use PSC19HBL1 for sensor accom.
2. Use PSC16HBL1 for sensor accom.
3. Use PSG19HBL1 for sensor accom.
4. Sport, Express, and Tradesman may require bumper trimming

5. Add'l GGF114BP bolt pack required
6. May trigger parking sensor on Denali
7. Denali requires grille trimming
8. Incl. knock out for engine block heater plug

9. Use PSF19MBP for sensor accommodation
10. Tow rating of 5,000 / 500 lbs.
11. Tow rating of 10,000 / 1,000 lbs.

12. Skirt length 8"
13. Skirt length 10"
14. Retains fact. rec.
15. Does not retain factory receiver

Legend Series Bumpers & Grille Guard

Make / Model	Style	Years	Footnote	Part #	Product Description	Lights	Retains			
							Park Sens	Frnt Cam	Tow Hks	Fog Lts
GMC (continued)										
Yukon	--	07 - 14	--	GGG07HBL1	Grille Guard	--	No	No	Yes	Yes
		00 - 06	--	GGG99HBL1	Grille Guard	--	No	No	Yes	Yes
			11, 12, 14	BBC008BLS	Rear Bumper	No	No	--	--	--
			92 - 99	--	FBC881BLR	Front Bumper with Grille Guard	--	No	No	Yes
		--		GGC881BL1	Grille Guard	--	No	No	Yes	Yes
Yukon XL	--	07 - 14	--	GGG07HBL1	Grille Guard	--	No	No	Yes	Yes
		00 - 06	11, 12, 14	BBC008BLS	Rear Bumper	No	No	--	--	--
Yukon XL 1500	--	00 - 06	--	GGG99HBL1	Grille Guard	--	No	No	Yes	Yes
Ram										
1500	Excl. diesel	19 - 22	--	GGD19HBL1C	Grille Guard	--	Yes	Yes	No	Yes
	Excl. Rebel	11 - 18	4	GGD09HBL1	Grille Guard	--	No	No	Yes	Yes
1500 Classic	Excl. Warlock	19 - 22	4	GGD09HBL1	Grille Guard	--	No	No	Yes	Yes
2500 / 3500	--	19 - 22	--	BTD191BLR	Bullnose Front Bumper	Yes	Yes	Yes	Yes	Yes
			--	FBD191BLRC	Front Bumper with Grille Guard	--	Yes	Yes	Yes	Yes
			--	FBD191BLR	Front Bumper with Grille Guard	--	Yes	No	Yes	Yes
			--	GGD191BL1C	Grille Guard	--	Yes	Yes	Yes	Yes
			--	GGD191BL1	Grille Guard	--	Yes	No	Yes	Yes
	11 - 18	11, 13, 15	BBD100BLL	Rear Bumper	Yes	No	--	--	--	
		11, 13, 15	BBD100BLSS	Rear Bumper	No	Yes	--	--	--	
	Excl. Tradesman	11 - 18	--	BTD101BLRS	Bullnose Front Bumper	--	Yes	No	Yes	Yes
			--	FBD101BLRS	Front Bumper with Grille Guard	--	Yes	No	Yes	Yes
	--	11 - 18	--	GGD101BL1	Grille Guard	--	No	No	Yes	Yes
4500 / 5500	Excl. Tradesman	11 - 18	--	BTD101BLRS	Bullnose Front Bumper	--	Yes	No	Yes	Yes
			--	FBD101BLRS	Front Bumper with Grille Guard	--	Yes	No	Yes	Yes
Toyota										
Tacoma	--	16 - 22	--	GGT16MBL1	Grille Guard	--	No	No	Yes	Yes
		05 - 15	--	GGT05MBL1	Grille Guard	--	No	No	Yes	Yes
Tundra	--	22 - 22	--	GGT22BHL1	Grille Guard	--	Yes	Yes	No	Yes
		14 - 21	--	GGT14HBL1	Grille Guard	--	No	No	Yes	Yes
		07 - 13	--	GGT07HBL1	Grille Guard	--	No	No	Yes	Yes

1. Use PSC19HBL1 for sensor accom.
2. Use PSC16HBL1 for sensor accom.
3. Use PSG19HBL1 for sensor accom.
4. Sport, Express, and Tradesman may require bumper trimming

5. Add'l GGF114BP bolt pack required
6. May trigger parking sensor on Denali
7. Denali requires grille trimming
8. Incl. knock out for engine block heater plug

9. Use PSF19MBP for sensor accommodation
10. Tow rating of 5,000 / 500 lbs.
11. Tow rating of 10,000 / 1,000 lbs.

12. Skirt length 8"
13. Skirt length 10"
14. Retains fact. rec.
15. Does not retain factory receiver

SUMMIT™ SERIES





ESCAPE THE CITYSCAPE.

The Summit™ series is built for those who travel far away from concrete cityscapes. Built by hand in Shiner, Texas, the Summit™ offers robust strength and reduced weight. For those who venture far into the unknown, the Summit™ will stand up to unforeseen obstacles and will get you to your destination while protecting you along the way.

SUMMIT™ FRONT BUMPER WITH GRILLE GUARD

Product Details

- High-strength yet lightweight 12-gauge, diamond-plate steel construction
- Constructed with 5/16" uprights for high-tensile strength and durability
- One-piece welded fabrication prevents rattling
- Perforated 12-gauge steel protects the truck grille from brush and road debris
- Retains factory fog lights and tow hooks, if equipped
- Compatible with front-facing sensors (Options available to accommodate front-facing cameras)
- Super polyester black powder coat finish for superior corrosion resistance
- Easy, direct-bolt installation with no cutting, welding or drilling required

See page 42 for application information



Stands up to any challenge.



The Summit is constructed with high-strength, 12-gauge, diamond-plate steel and has a 5/16" upright thickness that increases durability and sturdiness



The wraparound brush guard is made from 12-gauge steel tubing and provides extra front-end protection to safeguard headlights and body from brush and road debris



Features a strong yet lightweight design which provides robust protection and is specific to the truck make and model for a custom, tailored fit and easy installation

Finish & Material

Finish:
Gloss black powder coat

Material:
Carbon steel



Ram 2500

BUMPER ACCESSORIES

Universal Rubber Upright Pads

- Rubber stripping to protect grille guard uprights and finish
- Constructed from tough black rubber
- Easy, friction-fit installation
- Includes two rubber strips

Part #	Fits
RUPU	Legend grille guard and Legend, Summit and Sport front bumpers with grille guard



SUMMIT™ BULLNOSE FRONT BUMPER

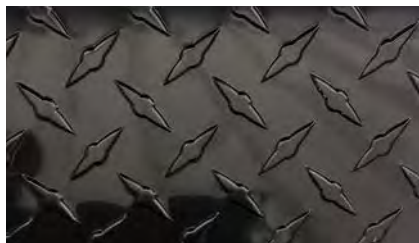
Product Details

- High-strength yet lightweight 12-gauge, diamond-plate steel construction with 2" thick 12-gauge bullnose
- Constructed with 5/16" uprights for high-tensile strength and durability
- Bullnose brush guard for extra front-end protection and an aggressive look
- Retains factory fog lights and tow hooks, if equipped
- Super polyester black powder coat finish for superior corrosion resistance
- Compatible with front-facing cameras and sensors
- Easy, direct-bolt installation with no cutting, welding or drilling required

See page 42 for application information



Unrivalled toughness and protection.



The Summit is constructed with high-strength, 12-gauge, diamond-plate steel and has a 5/16" upright thickness that increases durability and sturdiness



The 2" thick, 12-gauge bullnose provides extra front-end protection to safeguard the grille from obstacles and road debris while adding a sporty, baja-style look



Specifically designed for your truck, its direct-bolt-on installation method is straightforward and prevents the need to cut, weld or drill

Finish & Material



Finish:
Gloss black
powder coat

Material:
Carbon steel



GMC Denali HD



Toyota Tundra



Scan for current applications
or visit ranchhand.com



SUMMIT™ SERIES APPLICATION GUIDE

Summit Series Bumpers

Make / Model	Style	Years	FN	Part #	Product Description	Retains			
						Parking Sensors	Front Cams	Tow Hooks	Fog Lights
Chevrolet									
Avalanche 1500	Excl. models with cladding	03 - 06	--	FSC03HBL1	Front Bumper with Grille Guard	No	No	Yes	Yes
Avalanche 2500	Excl. models with cladding	03 - 06	--	FSC03HBL1	Front Bumper with Grille Guard	No	No	Yes	Yes
Silverado 1500	Excl. diesel	19 - 21	--	FSC19HBL1C	Front Bumper with Grille Guard	Yes	Yes	Yes	Yes
	Excl. diesel or fender flares	19 - 21	--	FSC19HBL1	Front Bumper with Grille Guard	Yes	No	Yes	Yes
	--	16 - 18	--	FSC16HBL1	Front Bumper with Grille Guard	Yes	No	Yes	Yes
			--	BSC16HBL1	Bullnose Front Bumper	Yes	No	Yes	Yes
		14 - 15	--	FSC14HBL1	Front Bumper with Grille Guard	Yes	No	Yes	Yes
			--	BSC14HBL1	Bullnose Front Bumper	No	No	Yes	Yes
		07 - 13	--	FSC08HBL1	Front Bumper with Grille Guard	No	No	Yes	Yes
			--	BSC08HBL1	Bullnose Front Bumper	No	No	Yes	Yes
		03 - 06	--	FSC03HBL1	Front Bumper with Grille Guard	No	No	Yes	Yes
	Excl. Z71	99 - 02	--	FSC99HBL1	Front Bumper with Grille Guard	No	No	Yes	Yes
Silverado 1500 Classic	--	07 - 07	--	FSC03HBL1	Front Bumper with Grille Guard	No	No	Yes	Yes
Silverado 1500 LD	--	19 - 19	--	FSC16HBL1	Front Bumper with Grille Guard	Yes	No	Yes	Yes
			--	BSC16HBL1	Bullnose Front Bumper	Yes	No	Yes	Yes
Silverado 1500 LTD	Excl. diesel	22 - 22	--	FSC19HBL1C	Front Bumper with Grille Guard	Yes	Yes	Yes	Yes
	Excl. diesel or fender flares	22 - 22	--	FSC19HBL1	Front Bumper with Grille Guard	Yes	No	Yes	Yes

1. Includes knock out for engine block heater plug

2. Requires cutting of the plastic bumper

Summit Series Bumpers

Make / Model	Style	Years	FN	Part #	Product Description	Retains			
						Parking Sensors	Front Cams	Tow Hooks	Fog Lights
Chevrolet (continued)									
Silverado 2500 HD	--	20 - 22	--	FSC201BL1C	Front Bumper with Grille Guard	Yes	Yes	Yes	Yes
			--	FSC201BL1	Front Bumper with Grille Guard	Yes	No	Yes	Yes
			--	BSC201BL1	Bullnose Front Bumper	Yes	Yes	Yes	Yes
		15 - 19	--	FSC151BL1	Front Bumper with Grille Guard	Yes	No	Yes	Yes
			--	BSC151BL1	Bullnose Front Bumper	Yes	No	Yes	Yes
		11 - 14	--	FSC111BL1	Front Bumper with Grille Guard	No	No	Yes	Yes
		07 - 10	--	FSC081BL1	Front Bumper with Grille Guard	No	No	Yes	Yes
		03 - 06	--	FSC031BL1	Front Bumper with Grille Guard	No	No	Yes	Yes
Silverado 2500 HD Classic	--	07 - 07	--	FSC031BL1	Front Bumper with Grille Guard	No	No	Yes	Yes
Silverado 3500	--	03 - 06	--	FSC031BL1	Front Bumper with Grille Guard	No	No	Yes	Yes
Silverado 3500 Classic	--	07 - 07	--	FSC031BL1	Front Bumper with Grille Guard	No	No	Yes	Yes
Silverado 3500 HD	--	20 - 22	--	FSC201BL1C	Front Bumper with Grille Guard	Yes	Yes	Yes	Yes
			--	FSC201BL1	Front Bumper with Grille Guard	Yes	No	Yes	Yes
			--	BSC201BL1	Bullnose Front Bumper	Yes	Yes	Yes	Yes
		15 - 19	--	FSC151BL1	Front Bumper with Grille Guard	Yes	No	Yes	Yes
			--	BSC151BL1	Bullnose Front Bumper	Yes	No	Yes	Yes
		11 - 14	--	FSC111BL1	Front Bumper with Grille Guard	No	No	Yes	Yes
		07 - 10	--	FSC081BL1	Front Bumper with Grille Guard	No	No	Yes	Yes
Suburban	--	00 - 06	--	FSC99HBL1	Front Bumper with Grille Guard	No	No	Yes	Yes
Tahoe	--	00 - 06	--	FSC99HBL1	Front Bumper with Grille Guard	No	No	Yes	Yes
Dodge									
Ram 1500	--	06 - 09	--	FSD061BL1	Front Bumper with Grille Guard	No	No	Yes	Yes
Ram 2500 / 3500	--	10 - 10	--	FSD101BL1S	Front Bumper with Grille Guard	Yes	No	Yes	Yes
	Excl. Express and Sport	10 - 10	--	BSD101BL1S	Bullnose Front Bumper	No	No	Yes	Yes
	--	06 - 09	--	FSD061BL1	Front Bumper with Grille Guard	No	No	Yes	Yes
		03 - 05	--	FSD031BL1	Front Bumper with Grille Guard	No	No	Yes	Yes
Ram 4500 / 5500	--	10 - 10	--	FSD101BL1S	Front Bumper with Grille Guard	Yes	No	Yes	Yes
	Excl. Express and Sport	10 - 10	--	BSD101BL1S	Bullnose Front Bumper	No	No	Yes	Yes

1. Includes knock out for engine block heater plug
2. Requires cutting of the plastic bumper

Summit Series Bumpers

Make / Model	Style	Years	FN	Part #	Product Description	Retains			
						Parking Sensors	Front Cams	Tow Hooks	Fog Lights
Ford									
F-150	--	21 - 22	--	FSF21HBL1	Front Bumper with Grille Guard	Yes	No	Yes	Yes
			--	FSF21HBL1C	Front Bumper with Grille Guard	Yes	Yes	Yes	Yes
			--	BSF21HBL1	Bullnose Front Bumper	Yes	Yes	Yes	Yes
		18 - 20	--	FSF18HBL1	Front Bumper with Grille Guard	No	Yes	Yes	Yes
			--	BSF18HBL1	Bullnose Front Bumper	No	No	Yes	Yes
		15 - 17	--	FSF15HBL1	Front Bumper with Grille Guard	Yes	Yes	Yes	Yes
			--	BSF15HBL1	Bullnose Front Bumper	No	No	Yes	Yes
		09 - 14	--	FSF09HBL1	Front Bumper with Grille Guard	Yes	Yes	Yes	Yes
			--	BSF09HBL1	Bullnose Front Bumper	No	No	Yes	Yes
06 - 08	--	FSF06HBL1	Front Bumper with Grille Guard	No	No	Yes	Yes		
F-250 / F-350 Super Duty	--	17 - 22	--	FSF201BL1C	Front Bumper with Grille Guard	Yes	Yes	Yes	Yes
			--	FSF201BL1	Front Bumper with Grille Guard	Yes	No	Yes	Yes
			--	BSF201BL1	Bullnose Front Bumper	Yes	Yes	Yes	Yes
		11 - 16	--	FSF111BL1	Front Bumper with Grille Guard	Yes	No	Yes	Yes
			--	BSF111BL1	Bullnose Front Bumper	No	No	Yes	Yes
F-450 / F-550 Super Duty	--	17 - 22	--	BSF201BL1	Bullnose Front Bumper	Yes	Yes	Yes	Yes
		11 - 16	--	FSF111BL1	Front Bumper with Grille Guard	Yes	No	Yes	Yes
			--	BSF111BL1	Bullnose Front Bumper	No	No	Yes	Yes
GMC									
Sierra 1500	--	16 - 18	--	FSG16HBL1	Front Bumper with Grille Guard	Yes	No	Yes	Yes
			--	BSG16HBL1	Bullnose Front Bumper	Yes	No	Yes	Yes
		14 - 15	--	FSG14HBL1	Front Bumper with Grille Guard	Yes	No	Yes	Yes
			--	BSG14HBL1	Bullnose Front Bumper	No	No	Yes	Yes
		07 - 13	--	FSG08HBL1	Front Bumper with Grille Guard	No	No	Yes	Yes
			--	BSG08HBL1	Bullnose Front Bumper	No	No	Yes	Yes
		03 - 06	--	FSG03HBL1	Front Bumper with Grille Guard	No	No	Yes	Yes
Sierra 1500 Classic	--	07 - 07	--	FSG03HBL1	Front Bumper with Grille Guard	No	No	Yes	Yes
Sierra 1500 Limited	--	19 - 19	--	FSG16HBL1	Front Bumper with Grille Guard	Yes	No	Yes	Yes
			--	BSG16HBL1	Bullnose Front Bumper	Yes	No	Yes	Yes
Sierra 2500 HD (continued on following page)	--	20 - 22	1	FSG201BL1C	Front Bumper with Grille Guard	Yes	Yes	Yes	Yes
			1	FSG201BL1	Front Bumper with Grille Guard	Yes	No	Yes	Yes
			1	BSG201BL1	Bullnose Front Bumper	Yes	Yes	Yes	Yes
		15 - 19	--	FSG151BL1	Front Bumper with Grille Guard	Yes	No	Yes	Yes
			--	BSG151BL1	Bullnose Front Bumper	Yes	No	Yes	Yes

1. Includes knock out for engine block heater plug
2. Requires cutting of the plastic bumper

Summit Series Bumpers

Make / Model	Style	Years	FN	Part #	Product Description	Retains			
						Parking Sensors	Front Cams	Tow Hooks	Fog Lights
GMC (continued)									
Sierra 2500 HD (continued from the previous page)		11 - 14	--	FSG111BL1	Front Bumper with Grille Guard	No	No	Yes	Yes
		07 - 10	--	FSG081BL1	Front Bumper with Grille Guard	No	No	Yes	Yes
		03 - 06	--	FSG031BL1	Front Bumper with Grille Guard	No	No	Yes	Yes
Sierra 2500 HD Classic	--	07 - 07	--	FSG031BL1	Front Bumper with Grille Guard	No	No	Yes	Yes
Sierra 3500	--	03 - 06	--	FSG031BL1	Front Bumper with Grille Guard	No	No	Yes	Yes
Sierra 3500 Classic	--	07 - 07	--	FSG031BL1	Front Bumper with Grille Guard	No	No	Yes	Yes
Sierra 3500 HD	--	20 - 22	1	FSG201BL1C	Front Bumper with Grille Guard	Yes	Yes	Yes	Yes
			1	FSG201BL1	Front Bumper with Grille Guard	Yes	No	Yes	Yes
			1	BSG201BL1	Bullnose Front Bumper	Yes	Yes	Yes	Yes
		15 - 19	--	FSG151BL1	Front Bumper with Grille Guard	Yes	No	Yes	Yes
			--	BSG151BL1	Bullnose Front Bumper	Yes	No	Yes	Yes
		11 - 14	--	FSG111BL1	Front Bumper with Grille Guard	No	No	Yes	Yes
		07 - 10	--	FSG081BL1	Front Bumper with Grille Guard	No	No	Yes	Yes
		Ram							
1500	Excl. diesel	19 - 22	--	FSD19HBL1C	Front Bumper with Grille Guard	Yes	Yes	No	Yes
	Excl. Express, Sport, Tradesman	13 - 18	--	FSD13HBL1	Front Bumper with Grille Guard	No	No	Yes	Yes
	Excl. Tradesman	13 - 18	--	BSD13HBL1	Bullnose Front Bumper	No	No	Yes	Yes
1500 Classic	Excl. Express, Sport, Tradesman	19 - 22	--	FSD13HBL1	Front Bumper with Grille Guard	No	No	Yes	Yes
	Excl. Tradesman	19 - 22	--	BSD13HBL1	Bullnose Front Bumper	No	No	Yes	Yes
2500 / 3500	--	19 - 22	--	FSD191BL1C	Front Bumper with Grille Guard	Yes	Yes	Yes	Yes
			--	FSD191BL1	Front Bumper with Grille Guard	Yes	No	Yes	Yes
			--	BSD191BL1	Bullnose Front Bumper	Yes	No	Yes	Yes
	11 - 18	--	FSD101BL1S	Front Bumper with Grille Guard	Yes	No	Yes	Yes	
	Excl. Express and Sport	11 - 18	--	BSD101BL1S	Bullnose Front Bumper	No	No	Yes	Yes
4500 / 5500	--	11 - 18	--	FSD101BL1S	Front Bumper with Grille Guard	Yes	No	Yes	Yes
	Excl. Express and Sport	11 - 18	--	BSD101BL1S	Bullnose Front Bumper	No	No	Yes	Yes
Toyota									
Tundra	--	14 - 21	2	FST14HBL1	Front Bumper with Grille Guard	No	No	Yes	Yes
			2	BST14HBL1	Bullnose Front Bumper	No	Yes	Yes	Yes
		07 - 13	2	FST07HBL1	Front Bumper with Grille Guard	No	No	Yes	Yes
			2	BST07HBL1	Bullnose Front Bumper	No	No	Yes	Yes

1. Includes knock out for engine block heater plug

2. Requires cutting of the plastic bumper

SPORT™

SERIES





IT CARRIES ITS OWN WEIGHT.

Built for those who work long days and even longer nights — the Sport™ series is made for heavy-duty work and recovery. Fabricated by hand in Shiner, Texas, and capable of housing a 16,500 lb.-winch — it's built for trips towards remote destinations and is ready to recover you from any kind of mishap you encounter on the backroads or jobsite.

SPORT™ FRONT BUMPER WITH GRILLE GUARD

Product Details

- Winch compatible on most models and rated for up to 16,500 lbs. of heavy-duty work and recovery
- High-strength, 1/4" formed C-channel and 3/16" thick diamond-plate steel construction for heavy-duty use
- One-piece welded fabrication prevents rattling
- Perforated 12-gauge steel protects the truck grille from brush and road debris
- Constructed with 5/16" uprights for high-tensile strength and unrivaled toughness and durability
- Custom punched grille inserts to match truck manufacturer's grille pattern
- Comes standard with 2" receiver for towing or other attachments
- Super polyester black powder coat finish for superior corrosion resistance
- Retains factory fog lights and tow hooks, if equipped
- Compatible with front-facing sensors (Options available to accommodate front-facing cameras)

See page 52 for application information



Supreme strength that is built to take a hit.



The Sport front bumper with grille guard is built for heavy-duty work and recovery and is made to house a 16,500 lb. Warn winch



Fabricated with high-strength, 1/4" formed C-channel steel and 3/16" diamond-plate steel for unrivaled strength and durability



Comes standard with a 12-gauge, wrap-around full grille guard and 2" receiver for towing for other attachments

Finish & Material

Finish:
Gloss black powder coat

Material:
Carbon steel



Ram 5500

BUMPER ACCESSORIES

Universal Rubber Upright Pads

- Rubber stripping to protect grille guard uprights and finish
- Constructed from tough black rubber
- Easy, friction-fit installation
- Includes two rubber strips

Part #	Fits
RUPI	Legend grille guard and Legend, Summit and Sport front bumpers with grille guard



SPORT™ REAR BUMPER

Product Details

- High-strength, 1/4" formed C-channel and 3/16" thick diamond-plate steel construction for heavy-duty use
- Super polyester black powder coat finish for superior corrosion resistance
- Built-in bumper step for easier truck bed access
- Comes standard with 6" LED oval lights for improved rear visibility
- Compatible with factory towing receiver hitch

See page 52 for application information



Built tough to protect, enhance and get every job done.



The Sport rear bumper is made with solid 3/16" formed C-channel and a diamond-plate steel construction for unrivaled strength and durability



Features built-in side-pocketed steps that provide easy, comfortable truck bed access (select applications)



The Sport comes standard with backup / work lights and retains use of your factory hitch for added convenience when upgrading

Finish & Material



Finish:
Gloss black
powder coat

Material:
Carbon steel



Ford F-250 Super Duty

BUMPER ACCESSORIES

| 6" Oval LED Light

- Designed for use as a back-up light or flood light for extra night-time visibility
- 6" wide, flush-mount style flood light with oval design provides improved rear visibility
- Constructed with LEDs for bright, long-lasting light
- Fitted with blunt-cut wires to be readily installed
- Includes one LED light only

Part #	Fits
LEDLIGHTCLEAR	Select Legend and Sport rear bumpers



LEDLIGHTCLEAR



| LED License Plate Light

- Provides nighttime visibility to license plate
- Fits Ranch Hand rear bumper license plate light hole
- Constructed with LEDs for bright, long-lasting light
- Fitted with blunt-cut wires to be readily installed
- Includes one LED light only

Part #	Fits
LEDLICENSELIGHT	Midnight, Legend and Sport rear bumpers



LEDLICENSELIGHT





Scan for current applications
or visit ranchhand.com



SPORT™ SERIES APPLICATION GUIDE

Sport Series Bumpers

Make / Model	Style	Years	FN	Part #	Product Description	Retains			
						Parking Sensors	Front Cams	Tow Hooks	Fog Lights
Chevrolet									
Silverado 1500	Dual exhaust only	19 - 21	--	SBC19HBLSE	Rear Bumper	Yes	--	Yes	Yes
	--	14 - 18	--	SBC14HBLSL	Rear Bumper	Yes	--	No	Yes
		07 - 13	1	SBC08HBLSL	Rear Bumper	Yes	--	Yes	Yes
Silverado 1500 LD	--	19 - 19	--	SBC14HBLSL	Rear Bumper	Yes	--	No	Yes
Silverado 1500 LTD	Dual exhaust only	22 - 22	--	SBC19HBLSE	Rear Bumper	Yes	--	Yes	Yes
Silverado 2500 HD 3500 HD	--	20 - 22	--	SBC201BLSL	Rear Bumper	Yes	--	Yes	Yes
		15 - 19	2	FBC155BLR	Front Bumper with Grille Guard	Yes	No	Yes	Yes
			--	SBC151BLSL	Rear Bumper	Yes	--	Yes	Yes
		11 - 14	2	FBC115BLR	Front Bumper with Grille Guard	No	No	Yes	Yes
		11 - 14	1	SBC111BLSL	Rear Bumper	Yes	--	Yes	Yes
		07 - 10	--	SBC081BLSL	Rear Bumper	Yes	--	Yes	Yes
Dodge									
Ram 1500	Side exhaust only	09 - 10	--	SBD09HBLSL	Rear Bumper	Yes	--	Yes	Yes
	Dual exhaust only	09 - 10	--	SBD09HBLSLE	Rear Bumper	Yes	--	Yes	Yes
	--	06 - 09	2	FBD065BLR	Front Bumper with Grille Guard	No	No	Yes	Yes
		03 - 09	--	SBD031BLL	Rear Bumper	No	--	Yes	Yes
	--	02 - 08	--	SBD031BLL	Rear Bumper	No	--	Yes	Yes
Ram 2500 / 3500	--	10 - 10	2	FBD105BLRS	Front Bumper with Grille Guard	Yes	No	Yes	Yes
	Side exhaust only	10 - 10	--	SBD09HBLSL	Rear Bumper	Yes	--	Yes	Yes
	--	06 - 09	2	FBD065BLR	Front Bumper with Grille Guard	No	No	Yes	Yes
		03 - 09	--	SBD031BLL	Rear Bumper	No	--	Yes	Yes
Ram 4500 / 5500	--	10 - 10	2	FBD105BLRS	Front Bumper with Grille Guard	Yes	No	Yes	Yes
Ford									
Excursion	--	05 - 05	2	FBF055BLR	Front Bumper with Grille Guard	No	No	No	Yes
		00 - 04	2	FBF995BLR	Front Bumper with Grille Guard	No	No	No	Yes

1. Can get to spare but cannot use lock

2. Winch capacity of 15,000 lbs.

Sport Series Bumpers

Make / Model	Style	Years	FN	Part #	Product Description	Retains			
						Parking Sensors	Front Cams	Tow Hooks	Fog Lights
Ford (continued)									
F-150	--	21 - 22	--	SBF21HBLSL	Rear Bumper	Yes	--	--	--
		15 - 20	--	SBF15HBLSL	Rear Bumper	Yes	--	Yes	Yes
	Crew cab	09 - 14	--	SBF09HBLSL	Rear Bumper	Yes	--	Yes	Yes
		06 - 08	--	SBF06HBLSL	Rear Bumper	Yes	--	Yes	Yes
F-250 F-350 Super Duty	--	17 - 22	2	FBF205BLR	Front Bumper with Grille Guard	Yes	Yes	Yes	Yes
			--	SBF171BLSL	Rear Bumper	Yes	--	Yes	Yes
		16 - 16	--	SBF161BLSL	Rear Bumper	Yes	--	Yes	Yes
		11 - 16	2	FBF115BLR	Front Bumper with Grille Guard	No	No	Yes	Yes
		08 - 15	--	SBF081BLSL	Rear Bumper	Yes	--	Yes	Yes
		08 - 10	2	FBF085BLR	Front Bumper with Grille Guard	No	No	Yes	Yes
		05 - 07	2	FBF055BLR	Front Bumper with Grille Guard	No	No	No	Yes
		99 - 04	2	FBF995BLR	Front Bumper with Grille Guard	No	No	No	Yes
F-450 Super Duty	--	17 - 22	--	SBF171BLSL	Rear Bumper	Yes	--	Yes	Yes
F-450 F-550 Super Duty	--	11 - 16	2	FBF115BLR	Front Bumper with Grille Guard	No	No	Yes	Yes
		08 - 10	2	FBF085BLR	Front Bumper with Grille Guard	No	No	Yes	Yes
		05 - 07	2	FBF055BLR	Front Bumper with Grille Guard	No	No	No	Yes
		99 - 04	2	FBF995BLR	Front Bumper with Grille Guard	No	No	No	Yes
GMC									
Sierra 1500	Dual exhaust only	19 - 21	--	SBC19HBLSE	Rear Bumper	Yes	--	Yes	Yes
	--	14 - 18	--	SBC14HBLSL	Rear Bumper	Yes	--	No	Yes
		07 - 13	1	SBC08HBLSL	Rear Bumper	Yes	--	Yes	Yes
Sierra 1500 Limited	Dual exhaust only	22 - 22	--	SBC19HBLSE	Rear Bumper	Yes	--	Yes	Yes
	--	19 - 19	--	SBC14HBLSL	Rear Bumper	Yes	--	No	Yes
Sierra 2500 HD / 3500 HD	--	20 - 22	--	SBC201BLSL	Rear Bumper	Yes	--	Yes	Yes
		15 - 19	--	SBC151BLSL	Rear Bumper	Yes	--	Yes	Yes
		11 - 14	2	FBG115BLR	Front Bumper with Grille Guard	No	No	Yes	Yes
		11 - 14	1	SBC111BLSL	Rear Bumper	Yes	--	Yes	Yes
		07 - 10	--	SBC081BLSL	Rear Bumper	Yes	--	Yes	Yes
Ram									
1500	Side exhaust only, excluding diesel	19 - 22	--	SBD19HBLSL	Rear Bumper	Yes	--	Yes	Yes
	Dual exhaust only	19 - 22	--	SBD19HBLSLE	Rear Bumper	Yes	--	Yes	Yes
	Side exhaust only	11 - 18	--	SBD09HBLSL	Rear Bumper	Yes	--	Yes	Yes
	Dual exhaust only	11 - 18	--	SBD09HBLSLE	Rear Bumper	Yes	--	Yes	Yes
1500 Classic	Side exhaust only	19 - 22	--	SBD09HBLSL	Rear Bumper	Yes	--	Yes	Yes
	Dual exhaust only	19 - 22	--	SBD09HBLSLE	Rear Bumper	Yes	--	Yes	Yes
2500 / 3500	--	19 - 22	2	FBD195BLRC	Front Bumper with Grille Guard	Yes	Yes	Yes	Yes
			--	SBD191BLSL	Rear Bumper	Yes	--	Yes	Yes
		11 - 18	2	FBD105BLRS	Front Bumper with Grille Guard	Yes	No	Yes	Yes
	Side exhaust only	11 - 18	--	SBD09HBLSL	Rear Bumper	Yes	--	Yes	Yes
4500 / 5500	--	11 - 18	2	FBD105BLRS	Front Bumper with Grille Guard	Yes	No	Yes	Yes
Toyota									
Tundra	--	14 - 21	--	SBT14HBLL	Rear Bumper	No	--	Yes	Yes
		07 - 13	--	SBT071BLL	Rear Bumper	No	--	Yes	Yes

1. Can get to spare but cannot use lock
2. Winch capacity of 15,000 lbs.

RUNNING STEPS





STEP UP & STAND OUT.

Step up into your rig with distinction and style. Ranch Hand running steps will secure your step when entering your rig while also providing protection from road debris. The wide steps and raised treads provide dependable traction for muddy, messy roads and jobsites and give a rugged look that'll separate your truck from the flock.

3"

RUNNING STEPS

Product Details

- 14-gauge 3" top pipe and 1-1/2" loop pipe for enhanced rigidity
- Truck-specific step configuration to match door layout and maximize safety
- 4" wide steps for comfortable entry and exit
- 12-gauge, punched steel foot plates with raised, high-traction treads
- Prominent Ranch Hand cowboy logo cut into each front step
- Durable black powder coat finish
- Co-cured in industry-leading, rust-resistant, liquid A-coat
- 3/16" thick brackets with truck-specific mounting points for easy installation
- Available in 4-step and 6-step configurations for easy access into extended cabs and truck beds
- Designed, cut, fabricated, welded and finished in the USA

See page 58 for application information



Step up confidently into your rig with style.



Ranch Hand running steps are constructed from 3" tubing and 3/16" thick brackets to secure the steps to the vehicle in the factory location without the need to drill extra holes



The front step plate is cut with the official Ranch Hand logo and features a 12-gauge punched pattern of raised steel treads to promote dependable traction



The steps are 4" wide, providing a spacious platform for comfortable entry and exit. Each set features 1-1/2" loop pipes for enhanced rigidity

Finish & Material



Finish:
A-coat and
gloss black
powder coat

Material:
Carbon steel



Ford F-350 Super Duty



Scan for current applications
or visit ranchhand.com

RUNNING STEPS APPLICATION GUIDE

Running Steps

Make / Model	Years	Cab Length	Bed Length	Bed Type	Part #	Steps	Step Length
Chevrolet							
Silverado 1500	19 - 22	Crew	--	--	RSC191C1B4S	4-step	Cab length
		Crew	6' 6"	Standard	RSC191C6B6S	6-step	Wheel-to-Wheel
	07 - 18	Crew	--	--	RSC071C1B4S	4-step	Cab length
		Crew	6' 6"	Standard	RSC071C6B6S	6-step	Wheel-to-Wheel
		Extended	6' 6"	Standard	RSC071Q6B6S	6-step	Wheel-to-Wheel
Silverado 1500 LD	07 - 18	Extended	6' 6"	Standard	RSC071Q6B6S	6-step	Wheel-to-Wheel
Silverado 1500 LTD	22 - 23	Crew	--	--	RSC191C1B4S	4-step	Cab length
		Crew	6' 6"	Standard	RSC191C6B6S	6-step	Wheel-to-Wheel
Silverado 2500 HD	20 - 23	Crew	--	--	RSC191C1B4S	4-step	Cab length
		Crew	6' 6"	Standard	RSC191C6B6S	6-step	Wheel-to-wheel
	07 - 19	Crew	--	--	RSC071C1B4S	4-step	Cab length
		Crew	6' 6"	Standard	RSC071C6B6S	6-step	Wheel-to-wheel
		Crew	8'	Standard	RSC071C8B6S	6-step	Wheel-to-wheel
	07 - 18	Extended	6' 6"	Standard	RSC071Q6B6S	6-step	Wheel-to-wheel
Silverado 3500 HD	20 - 23	Crew	--	--	RSC191C1B4S	4-step	Cab length
		Crew	6' 6"	Standard	RSC191C6B6S	6-step	Wheel-to-wheel
	07 - 19	Crew	--	--	RSC071C1B4S	4-step	Cab length
		Crew	6' 6"	Standard	RSC071C6B6S	6-step	Wheel-to-wheel
		Crew	8'	Standard	RSC071C8B6S	6-step	Wheel-to-wheel
	07 - 18	Extended	6' 6"	Standard	RSC071Q6B6S	6-step	Wheel-to-wheel
Dodge							
Ram 1500	09 - 10	Crew	--	--	RSD091C1B4S	4-step	Cab length
Ram 2500 / 3500	09 - 10	Crew	--	--	RSD091C1B4S	4-step	Cab length
		Crew	6' 6"	--	RSD101C6B6S	6-step	Wheel-to-wheel
	10 - 10	Crew	8'	--	RSD101C8B6S	6-step	Wheel-to-wheel
		Extended Crew	6' 6"	--	RSD101M6B6S	6-step	Wheel-to-wheel
Ford							
F-150	15 - 23	Crew	--	--	RSF151C1B4S	4-step	Cab length
		Crew	6' 6"	Standard	RSF171C6B6S	6-step	Wheel-to-wheel
		Extended	--	--	RSF151S1B4S	4-step	Cab length
		Extended	6' 6"	Standard	RSF151S6B6S	6-step	Wheel-to-wheel
		Extended	8'	Standard	RSF171S8B6S	6-step	Wheel-to-wheel

Running Steps

Make / Model	Years	Cab Length	Bed Length	Bed Type	Part #	Steps	Step Length
Ford (continued)							
F-250 Super Duty	17 - 23	Crew	--	--	RSF151C1B4S	4-step	Cab length
		Crew	6' 6"	Standard	RSF171C6B6S	6-step	Wheel-to-wheel
		Crew	8'	Standard	RSF171C8B6S	6-step	Cab length
	99 - 16	Crew	--	--	RSF991C1B4S	4-step	Cab length
		Crew	6' 6"	Standard	RSF991C6B6S	6-step	Wheel-to-wheel
		Crew	8'	Standard	RSF991C8B6S	6-step	Wheel-to-wheel
	17 - 23	Extended	--	--	RSF151S1B4S	4-step	Wheel-to-wheel
		Extended	6' 6"	Standard	RSF151S6B6S	6-step	Wheel-to-wheel
		Extended	8'	Standard	RSF171S8B6S	6-step	Wheel-to-wheel
F-350 Super Duty	17 - 23	Crew	--	--	RSF151C1B4S	4-step	Cab length
		Crew	6' 6"	Standard	RSF171C6B6S	6-step	Wheel-to-wheel
		Crew	8'	Standard	RSF171C8B6S	6-step	Wheel-to-wheel
		Crew	8'	Dually	RSF17DC8B6S	6-step	Wheel-to-wheel
	99 - 16	Crew	--	--	RSF991C1B4S	4-step	Cab length
		Crew	6' 6"	Standard	RSF991C6B6S	6-step	Wheel-to-wheel
		Crew	8'	Standard	RSF991C8B6S	6-step	Wheel-to-wheel
	17 - 23	Extended	--	--	RSF151S1B4S	4-step	Cab length
		Extended	6' 6"	Standard	RSF151S6B6S	6-step	Wheel-to-wheel
Extended		8'	Standard	RSF171S8B6S	6-step	Wheel-to-wheel	
F-450 Super Duty	17 - 23	Crew	--	--	RSF151C1B4S	4-step	Cab length
		Crew	8'	Dually	RSF17DC8B6S	6-step	Wheel-to-wheel
	99 - 16	Crew	--	--	RSF991C1B4S	4-step	Cab length
GMC							
Sierra 1500	19 - 23	Crew	--	--	RSC191C1B4S	4-step	Cab length
		Crew	6' 6"	Standard	RSC191C6B6S	6-step	Wheel-to-Wheel
	07 - 18	Crew	--	--	RSC071C1B4S	4-step	Cab length
		Crew	6' 6"	Standard	RSC071C6B6S	6-step	Wheel-to-Wheel
		Extended	6' 6"	Standard	RSC071Q6B6S	6-step	Wheel-to-Wheel
Sierra 1500 Limited	22 - 23	Crew	--	--	RSC191C1B4S	4-step	Cab length
		Crew	6' 6"	Standard	RSC191C6B6S	6-step	Wheel-to-Wheel
	07 - 18	Extended	6' 6"	Standard	RSC071Q6B6S	6-step	Wheel-to-Wheel
Sierra 2500 HD / 3500 HD	20 - 23	Crew	--	--	RSC191C1B4S	4-step	Cab length
		Crew	6' 6"	Standard	RSC191C6B6S	6-step	Wheel-to-wheel
	07 - 19	Crew	--	--	RSC071C1B4S	4-step	Cab length
		Crew	6' 6"	Standard	RSC071C6B6S	6-step	Wheel-to-wheel
		Crew	8'	Standard	RSC071C8B6S	6-step	Wheel-to-wheel
		Extended	6' 6"	Standard	RSC071Q6B6S	6-step	Wheel-to-wheel
Ram							
1500	19 - 23	Crew	--	--	RSD19HC1B4S	4-step	Cab length
	11 - 18	Crew	--	--	RSD091C1B4S	4-step	Cab length
		Crew	6' 6"	Standard	RSD101C6B6S	6-step	Wheel-to-wheel
1500 Classic	19 - 22	Crew	--	--	RSD091C1B4S	4-step	Cab length
		Crew	6' 6"	Standard	RSD101C6B6S	6-step	Wheel-to-wheel
2500 / 3500	11 - 23	Crew	--	--	RSD091C1B4S	4-step	Cab length
		Crew	6' 6"	Standard	RSD101C6B6S	6-step	Wheel-to-wheel
		Crew	8'	Standard	RSD101C8B6S	6-step	Wheel-to-wheel
		Extended Crew	--	--	RSD101M1B4S	4-step	Cab length
		Extended Crew	6' 6"	Standard	RSD101M6B6S	6-step	Wheel-to-wheel
Toyota							
Tundra	07 - 22	Crew	--	--	RST07HC1B4S	4-step	Cab length
		Extended Crew	--	--	RST07HQ1B4S	4-step	Cab length

PUSH BAR



TRUST WORTHY.

Trusted by our nation's firefighting, wildland and ambulance teams when emergencies call and chaos reigns. Hand-fabricated and built in Shiner, Texas, Ranch Hand push bars feature thick 5/16" steel that'll hold up to extreme demands when duty calls.

PUSH BAR

Scan for current applications
or visit ranchhand.com



Product Details

- Provides extra front-end protection, great for emergency response vehicles
- Frame-mounted in four locations for maximum strength and heavy-duty use
- Constructed with full-height 5/16" steel uprights for high-tensile strength and unrivaled toughness and durability
- Pre-drilled crossbar holds two to four lights
- Super polyester black powder coat finish for superior corrosion resistance
- Optional rubber upright pads available (#RUPU sold separately, see page 24)



Designed for emergency response vehicles.



Uniquely engineered for form, function and strength, this push bar makes an ideal police push bar, providing extra protection for emergency response and service vehicles



To promote maximum rigidity and front-end strength, this truck push bar bolts directly onto the frame of the vehicle and has full-height uprights



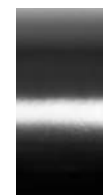
To easily outfit your vehicle with auxiliary lights, sirens, beacons, perimeter lights or cameras, this push bar has a pre-drilled crossbar

Application Guide

Push Bars

Make / Model	Years	Part #	Retains			
			Parking Sensors	Front Cameras	Tow Hooks	Fog Lights
Chevrolet						
Silverado 2500HD	20 - 22	PBC201BL1	Yes	No	Yes	Yes
Silverado 3500HD	20 - 22	PBC201BL1	Yes	No	Yes	Yes
Ford						
F-250 Super Duty	17 - 22	PBF201BL1	Yes	Yes	Yes	Yes
F-350 Super Duty	17 - 22	PBF201BL1	Yes	Yes	Yes	Yes
F-450 Super Duty	17 - 22	PBF201BL1	Yes	Yes	Yes	Yes
F-550 Super Duty	17 - 22	PBF201BL1	Yes	Yes	Yes	Yes

Finish & Material



Finish:
Gloss black
powder coat

Material:
Carbon steel

PARTNERSHIPS & MERCH

BOSQUE RANCH PARTNERSHIP

Lippert along with Ranch Hand and CURT announced their partnership with Bosque Ranch, a 1,000-acre complex and premiere equine facility in North Texas, owned by Taylor Sheridan. The Ranch is also home of the NCHA Brazos Bash, the training center of NCHA Million Dollar rider Geoffrey Sheehan, 2018 NRCHA World's Greatest Horseman rider Kelby Phillips, NRHA million-dollar rider Matt Mills, filming location for Yellowstone, 1883, and more. The purpose of the partnership is to further our brands' commitment and support of the equine and performance horse industry.

bosqueranchheadquarters.org



See what we are
doing together

NRCHA PARTNERSHIP

Ranch Hand is thrilled to announce the newly formed partnership between CURT, Ranch Hand and the National Reined Cow Horse Association (NRCHA), all which share a common goal of protecting reined cow horses and their riders on the road. The partnership will be vital in providing safety, efficiency, and protection for reined cow horses and their riders on the road through the comprehensive line-up of products offered by Ranch Hand combined with the reined cow horse lifestyle and culture offered by the NRCHA.

nrcha.com



Check it out
on Facebook

AMBASSADOR MATT MILLS

Matt Mills has been named as the brand ambassador for the Ranch Hand and CURT brands. Mills is the premier horse trainer for Bosque Ranch, an equine training facility in North Texas and the official filming location for the popular television shows *Yellowstone* and *1883*. Mills is a fierce competitor and has a resume of impressive accomplishments, which includes gold medalist from the World Equestrian Games (WEG) in Aachen, Germany. He also holds the title for the 2006 United States Equestrian (USEF) Open Reining Championship.



Learn more
about Matt

APPAREL STORE

Ranch Hand has launched an apparel store! Check with your local dealers to ask if they are stocking the merchandise.



See our
selection



LIMITED LIFETIME WARRANTY

RANCH HAND provides limited lifetime warranty coverage against defects in factory workmanship and materials for RANCH HAND products ("Products") sold by factory authorized dealers for use by retail (end use) consumers. This Limited Warranty is provided only to the original Product consumer, and applies only to the original installation. This Limited Warranty is not transferrable and does not extend or apply to anyone else. For consumers in the U.S.: this Limited Warranty gives you specific legal rights; you also may have other rights, which vary from state to state.

This Limited Warranty is the sole and exclusive warranty provided by RANCH HAND, and all other warranties and conditions are excluded and disclaimed. **UNDER THE LAW OF CERTAIN STATES, THERE MAY BE NO IMPLIED CONDITIONS OR WARRANTIES FROM RANCH HAND APPLICABLE TO YOUR PRODUCT, AND ALL IMPLIED CONDITIONS OR WARRANTIES (INCLUDING ANY WARRANTY OF MERCHANTABILITY OR FITNESS FOR A PARTICULAR PURPOSE) ARE EXCLUDED AND DISCLAIMED WHERE ALLOWED BY LAW.** If implied warranties are imposed under any applicable state law, all such implied warranties are limited to the duration of the applicable provisions of this Limited Warranty. For consumers in the U.S.: some states do not allow limitations on how long an implied warranty lasts, so the above limitation may not apply to you.

COVERED PRODUCTS AND LIMITATIONS

RANCH HAND provides the following Limited Warranty coverage:

Product	Workmanship & Materials	Components & Parts	Finishings & Coatings
All powder coat over carbon steel	Limited lifetime	1-year	1-year
Electrical and wiring	1-year	1-year	1-year
Other accessories	Limited lifetime	1-year	1-year

Each of the warranty coverage periods runs from the date of purchase of the Product (proof of purchase is required) and applies only to warranted defects that first occur and are reported to RANCH HAND within the applicable warranty period. RANCH HAND retains the right to determine to its reasonable satisfaction whether any claimed defect is covered by this Limited Warranty.

Certain items are excluded from Limited Warranty coverage by RANCH HAND, and this **Limited Warranty coverage does not apply to:**

- Wear and tear from normal use, including damage from road debris
- Improper product selection, application, installation or maintenance
- Modifications, including the attachment of other hardware or components
- Misuse, abuse, overloading, improper trailering or hauling, accident
- Corrosion or damage due to environmental conditions

REMEDIES UNDER THIS LIMITED WARRANTY

If a defect covered by this warranty occurs, RANCH HAND will repair or replace the Product, or refund the purchase price, in its sole discretion. This "repair, replacement or refund" remedy is the **sole and exclusive remedy** under this Limited Warranty. RANCH HAND has **no responsibility or liability for any incidental or consequential damages**, such as loss of use of vehicles or trailers, towing charges, storage charges, labor and service charges for removing or reinstalling products, loss of or damage to personal property, or interest or finance charges, all of which are specifically **excluded and disclaimed** from this Limited Warranty. For consumers in the U.S.: some states do not allow the exclusion or limitation of incidental or consequential damages, so the above limitation or exclusion may not apply to you.

RESPONSIBILITY OF PURCHASER

The Purchaser must have proof of purchase to obtain service under this Limited Warranty. Contact RANCH HAND for a Returned Goods Authorization (RGA) and return instructions; RANCH HAND will not accept Products unless an RGA has been issued. The Purchaser must deliver the Product to RANCH HAND or an authorized RANCH HAND dealer along with the RGA number and proof of purchase.

The RANCH HAND Limited Warranty policy in effect on the date you purchased your Product determines the applicable warranty coverage, and subsequent or prior RANCH HAND warranties are not applicable to your Product. The terms of this Limited Warranty cannot be changed or modified, except by a written agreement signed by an officer of RANCH HAND. RANCH HAND reserves the right to improve its products through changes in design or materials without being obligated to the owners of the Products of the same or similar models.

Contact information:

RANCH HAND Headquarters
6208 Industrial Drive
Eau Claire, WI 54701
800.366.9712



**BUILT BY
OUR HANDS.
BUILT TO
TAKE A HIT.**



Starting from a small shop in south Texas, Ranch Hand was one of the first manufacturers to enter the truck accessories industry. Since then, business experience, knowledge and determination have expanded Ranch Hand's presence to tens of thousands of trucks and SUVs across the nation.

Our number one priority is that you, your family and your vehicle are protected from the unpredictable. We've built a reputation in the truck accessories industry for making the sturdiest products, meticulously engineered for durability. You can ride in comfort knowing that you and your family are safe behind the strength of our steel bumpers and grille guards.

Decades of manufacturing and design experience – paired with top-notch engineering, product development and marketing teams – have revolutionized our brand and allowed Ranch Hand to find new solutions to increasing demand. We are proud of our heritage and excited about what is to come.

**TO SEE OUR WARRANTY,
VISIT RANCHHAND.COM**

All product names, logos, brands, and other trademarks shown are the property of their respective trademark holders, and use of them does not imply any affiliation with or endorsement by them.



CONNECT WITH US



PHONE
877.287.8634



WEB
RANCHHAND.COM



SOCIAL MEDIA
@RANCHHANDTRUCK
#RANCHHANDTRUCK

LOCATIONS

HEADQUARTERS

6208 INDUSTRIAL DRIVE
EAU CLAIRE, WI 54701

SHINER

959 STATE HIGHWAY 95 NORTH
SHINER, TX 77984