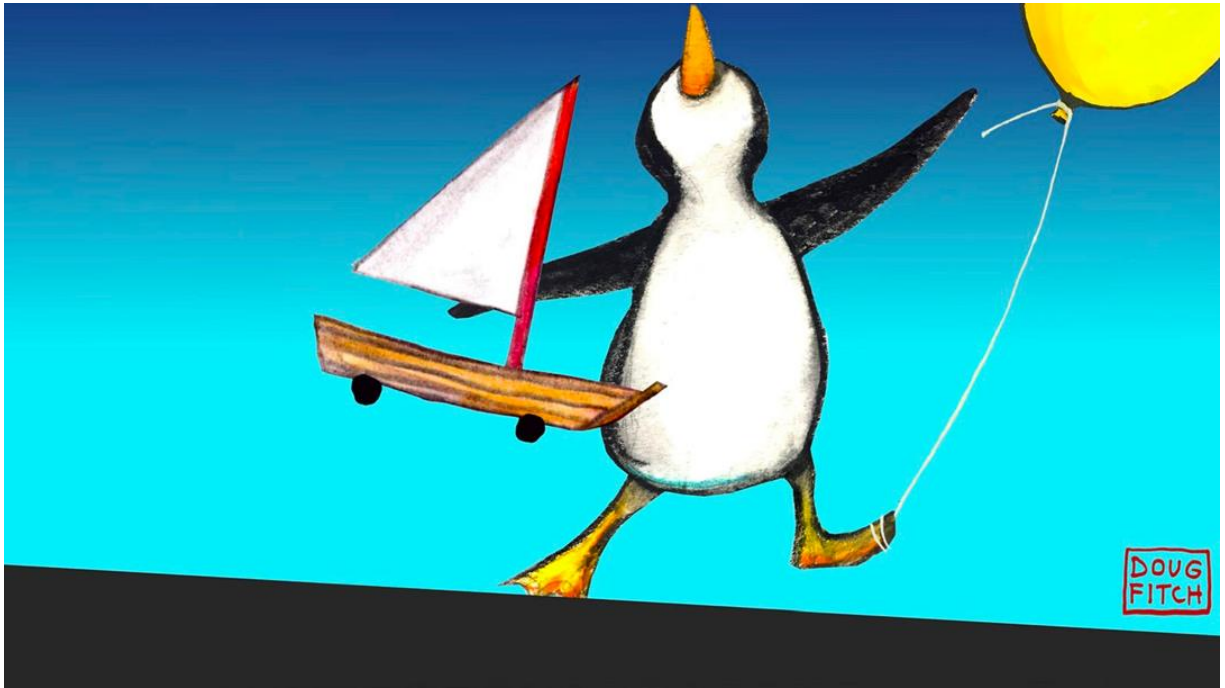


Philharmonic Playdates: Games and Toys with the New York Philharmonic at the Stanley H. Kaplan Penthouse



Imagine having a playdate with the orchestra—where musical instruments are toys, songs become games, and we can make believe whatever our hearts desire! Join Philippe the Penguin and NY Phil musicians to make new friends and share in the joy of music. There will be hands-on activities and musical games before the 30-minute, hosted concert, geared towards neurodiverse audiences. The performance includes music from Schubert's Trout Quintet.

This performance takes place in the Stanley H. Kaplan Penthouse on the tenth floor of the Samuel B. and David Rose Building, located at 165 West 65th Street.

The Stanley H. Kaplan Penthouse



The Stanley H. Kaplan Penthouse is on the 10th floor of the Rose Building (circled in red), located on the North side of West 65th Street between Broadway and Amsterdam Avenue.

About the Show



Attendees will be invited to join music-making activities with New York Philharmonic Teaching Artists, introducing instruments for attendees to listen to, touch, hold and play.

Musicians will then perform for 30 minutes, telling a story in between each piece of music.

Audiences can sit on the floor or in chairs and are welcome to move around the space, change seats, leave the room and come back as needed.

Getting to the Kaplan Penthouse

BY SUBWAY: The Samuel Rehearsal Studio is a short distance from the **1** train at West 66th Street. It is a slightly longer distance from the **A, B, C, D** or **1** trains at 59th Street—Columbus Circle. Both subway stations are accessible via elevator.



Subway icons: white letters and numbers in colorful circles: 1 red, B orange, D orange, A blue, C blue.

BY BUS: The **M5, M7, M10, M11, and M104** bus lines all stop within one block of the Samuel Rehearsal Studio.

Access-A-Ride: The recommended Access-A-Ride address for drop off closest to the main entrance is 165 West 65th Street (between Amsterdam Avenue and Broadway).

Parking:

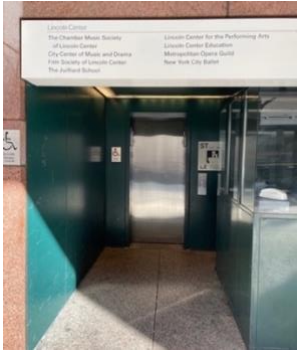
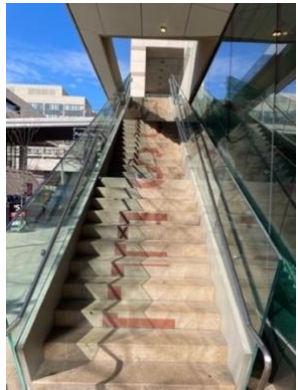
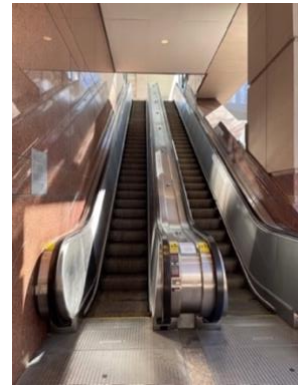
Main Campus Parking (operated by ICON)

- Designated accessible parking spaces are located in the yellow section of the garage
- Entrance for Reserved Parking Section is on Amsterdam Avenue at 64th Street
- Parking permit and/or sticker must be displayed
- Advance reservations for parking include a \$5 service charge
- Height restrictions for vans apply

To reserve parking, call CenterCharge at 212-721-6500 or visit online at LincolnCenterParking.org.

Venue Access:

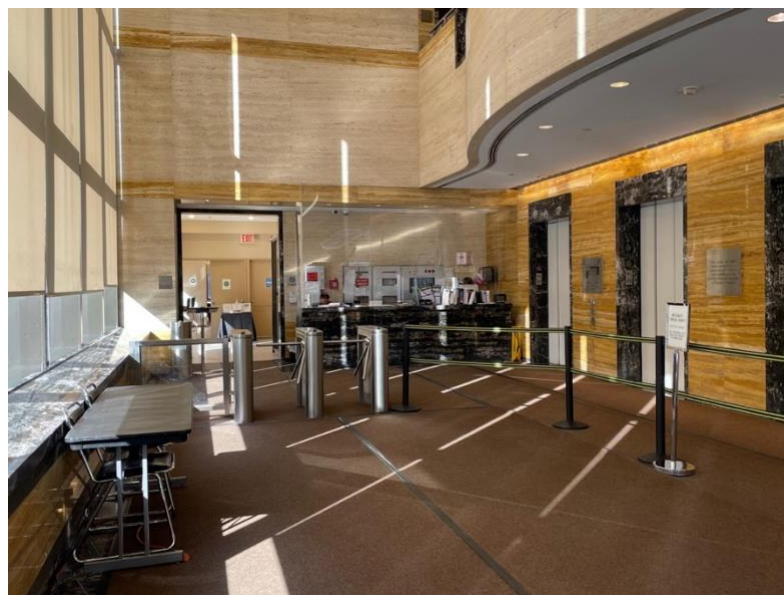
The Samuel B. and David Rose Building is accessible from West 65th Street by elevator, stairs, and escalator.

	<p>This is the entrance to the elevator on the street level. It is located near the northeast corner of 65th Street and Amsterdam Avenue.</p>
	<p>This is the Rose Building staircase that reads "Rose" on the steps. It is located in the middle of West 65th Street, facing towards Columbus Avenue.</p>
	<p>This is the base of the street-level escalators, located next to the elevator.</p>

The entrance to the Samuel B. and David Rose Building has manual, revolving, and automatic door options.

Audience Entrance and Security Gate:

The Box Office for Kaplan Penthouse performances is located in the lobby of the Rose Building. Guests will be greeted by Lincoln Center staff and will be directed to enter through a security gate to reach the elevators.



To get to the Kaplan Penthouse, guests can enter the Samuel B. and David Rose Building go past the security gate and use the elevators to get to the 7th floor.

Accommodations:

This venue has **accessible routes**, with **designated wheelchair and companion seating**.



FM assistive listening devices with headsets and neck loops are available for all performances. Additionally, guests are welcome to bring their own headphones and standard jack headsets.



American Sign Language interpreters integrated into performance. ASL-viewing seats are marked toward the front of the stage.



Live captioning is available on personal devices via QR code posted at the Information Desk.



Noise-reducing headphones, earplugs, fidgets, and other sensory items are available to borrow. There is a chill out space on the opposite side of the elevator bank from the performance space.



Access Concierge Service: Access Reps, trained to support guests with disabilities, are available to provide 1:1 support for individual guests and their party. **Must be scheduled in advance**



If you require any additional accommodations, please contact access@lincolncenter.org or 212 875 5375.

Restrooms

Gendered restrooms with one accessible stall each are located down the hall to the right across from the theater on the 10th Floor. Lincoln Center welcomes guests to use the restroom that most closely aligns with their gender identity or expression, while the law requires gender binary signs.



Food and Drink:

Refillable water station is located near restrooms.

Food trucks are available from 11:00am to 6:00pm in Damrosch Park.

Jerrell's Betr Brgr

Lil Betr Brgr \$10

SINGLE BETR BRGR with Impossible™ patty, vegan cheese, lettuce & tomato, grilled onions, pickles & Jerrell's special sauce.

O.G. Betr brgr \$14

DOUBLE BETR BRGR with two Impossible™ patties, vegan cheese, lettuce & tomato, grilled onions, pickles & Jerrell's special sauce.



Maya's Snack Bar

Fruit Cup- \$8

Strawberries and Cream- \$10

Mexican Street Corn- \$8

Mango Chamoyada- \$13

Paletas- \$5

(all items are nut free, gluten free, and dye free. Some items can be made dairy free)



Bel-Fries

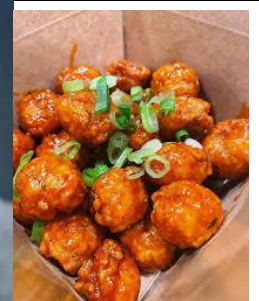
Cone of Bel-Fries- \$9

Cone of Popcorn chicken- \$14

Mixed Cone- \$14

(All cones are dairy free, nut free and dye free)

Sauces: \$2



While You Wait

Visual Art stations on the 10th Floor and in Damrosch Park are open from 11:00am to 6:00pm for drop in arts exploration.



Photo Credit: Lawrence Sumulong

Guests who arrive early can explore the public areas on campus while they wait. The **Josie Robertson Plaza** features a large fountain and spectacular views of Lincoln Center.

David Geffen Hall's lobby is an indoor space with a coffee bar, restrooms and seating.

Hearst Plaza is a wonderful area with green space and seating to enjoy the cityscape.



FRIDAY APRIL 12	SATURDAY APRIL 13	SUNDAY APRIL 14
11:00 AM TREE A WORLD IN ITSELF BY THÉÂTRE MOTUS Samuel Rehearsal Studio	11:00 AM LACHI David Rubenstein Atrium	11:00 AM TREE A WORLD IN ITSELF BY THÉÂTRE MOTUS Samuel Rehearsal Studio
2:00 PM TREE A WORLD IN ITSELF BY THÉÂTRE MOTUS Samuel Rehearsal Studio	11:00 AM TREE A WORLD IN ITSELF BY THÉÂTRE MOTUS Samuel Rehearsal Studio	12:30 PM PLAYFUL TIGER BY BARROWLAND BALLET Clark Studio Theater
3:30 PM PLAYFUL TIGER BY BARROWLAND BALLET Clark Studio Theater	12:30 PM PLAYFUL TIGER BY BARROWLAND BALLET Clark Studio Theater	1:30 PM CREATIVE WORKSHOPS ANIMALS IN MOTION Stanley H. Kaplan Penthouse
	2:00 PM TREE A WORLD IN ITSELF BY THÉÂTRE MOTUS Samuel Rehearsal Studio	2:00 PM TREE A WORLD IN ITSELF BY THÉÂTRE MOTUS Samuel Rehearsal Studio
	3:30 PM PLAYFUL TIGER BY BARROWLAND BALLET Clark Studio Theater	2:30 PM CREATIVE WORKSHOPS ANIMALS IN MOTION For Teaching Artists, Administrators and Educators Stanley H. Kaplan Penthouse
	5:00 PM GAMES AND TOYS IN COLLABORATION WITH THE NEW YORK PHILHARMONIC Stanley H. Kaplan Penthouse	3:30 PM PLAYFUL TIGER BY BARROWLAND BALLET Clark Studio Theater
	7:00 PM LACHI David Rubenstein Atrium	5:00 PM CREATIVE WORKSHOPS ANIMALS IN MOTION Stanley H. Kaplan Penthouse

ALL-DAY ACTIVITIES | 11:00 AM–6:00 PM | DAMROSCH PARK
ARCHITECTS OF AIR'S DAEDALUM, FOOD TRUCKS, CHILL OUT SPACES, & VISUAL ART ACTIVITY STATIONS

LincolnCenter.org/BigUmbrella

