

Relaxed Open Rehearsal: The Beethoven Effect at Lincoln Center



This Relaxed Rehearsal with the Festival Orchestra of Lincoln Center will provide a peek behind the scenes as the Festival Orchestra prepares this program for performance.

This ticketed event has a running time of 2 hours and 30 minutes, with a 15-minute intermission halfway through the rehearsal. It is also part of our Relaxed Performance series, open to all ages and designed for people with autism, sensory or communication disorders or learning disabilities.

Program Information

In this Open Rehearsal, the **Festival Orchestra of Lincoln Center** is rehearsing for their concert that night and the following night. The pieces the orchestra will practice can be accessed through links below.

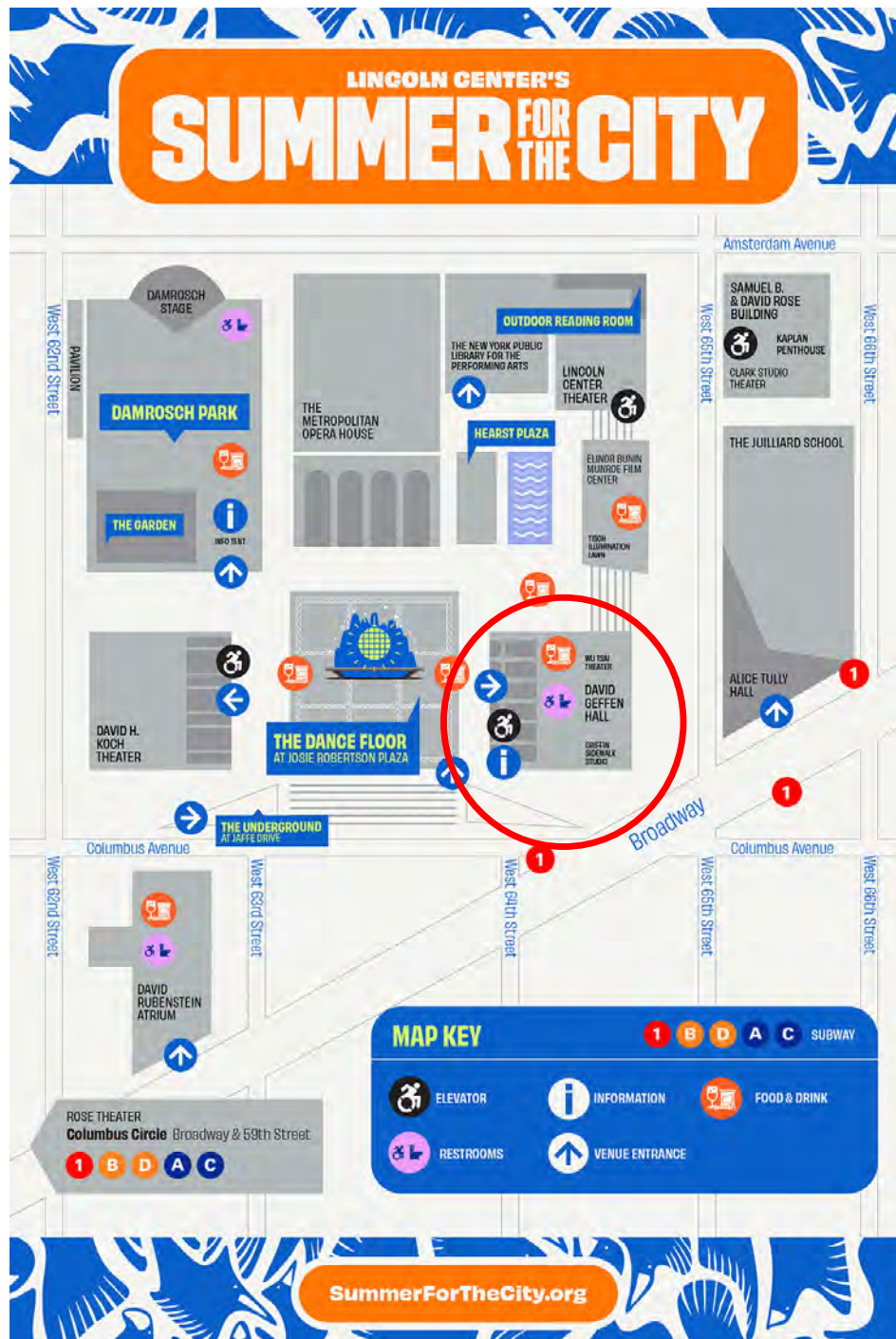
- [Iman Habibi *Jeder Baum spricht*](#): [Performed by the Boston Symphony Orchestra, estimated 2:00 minutes]
- [Ludwig van Beethoven Concerto in C major for Violin, Cello, and Piano “Triple Concerto”](#): [Performed by the Frankfurt Radio Symphony Orchestra, estimated 40:00 minutes]
- [Louise Farrenc Overture No. 1 in E minor](#) [Performed by the North German Radio Symphony Orchestra, estimated 7:00 minutes]
- [Ludwig van Beethoven Symphony No. 7 in A major](#): [Performed by the West-eastern Divan Orchestra, estimated 36:00 minutes]

The music will ebb and flow, and there will be moments of “booms” from the timpani. Guest soloists will be positioned at the front and center of the stage during the Ludwig van Beethoven Concerto in C Major for Violin, Cello, and Piano.

The rehearsal and the performances will be conducted by Jonathon Heyward, who is in his second year as Music & Artistic Director of the Festival Orchestra of Lincoln Center.

Venue Information

David Geffen Hall is located between West 64th and 65th Street on Columbus Avenue. It is next to Josie Robertson Plaza and across from the David H. Koch Theater.



Getting to David Geffen Hall

Travel Options:

David Geffen Hall is located on the West side of Columbus Avenue between 64th and 65th Street.

BY SUBWAY: David Geffen Hall is a short distance from the **1** train at West 66th Street and a slightly longer distance from the **A, B, C, D** or **1** trains at 59th Street—Columbus Circle. Both subway stations are accessible via elevator.



BY BUS: The **M5, M7, M10, M11, M66,** and **M104** bus lines all stop within one block of Lincoln Center.

Access-A-Ride:

20 Lincoln Center Plaza is Lincoln Center's designated Access-A-Ride drop-off, on Columbus between 63rd and 64th Street.

Parking:

Main Campus Parking (operated by SP+) is available.

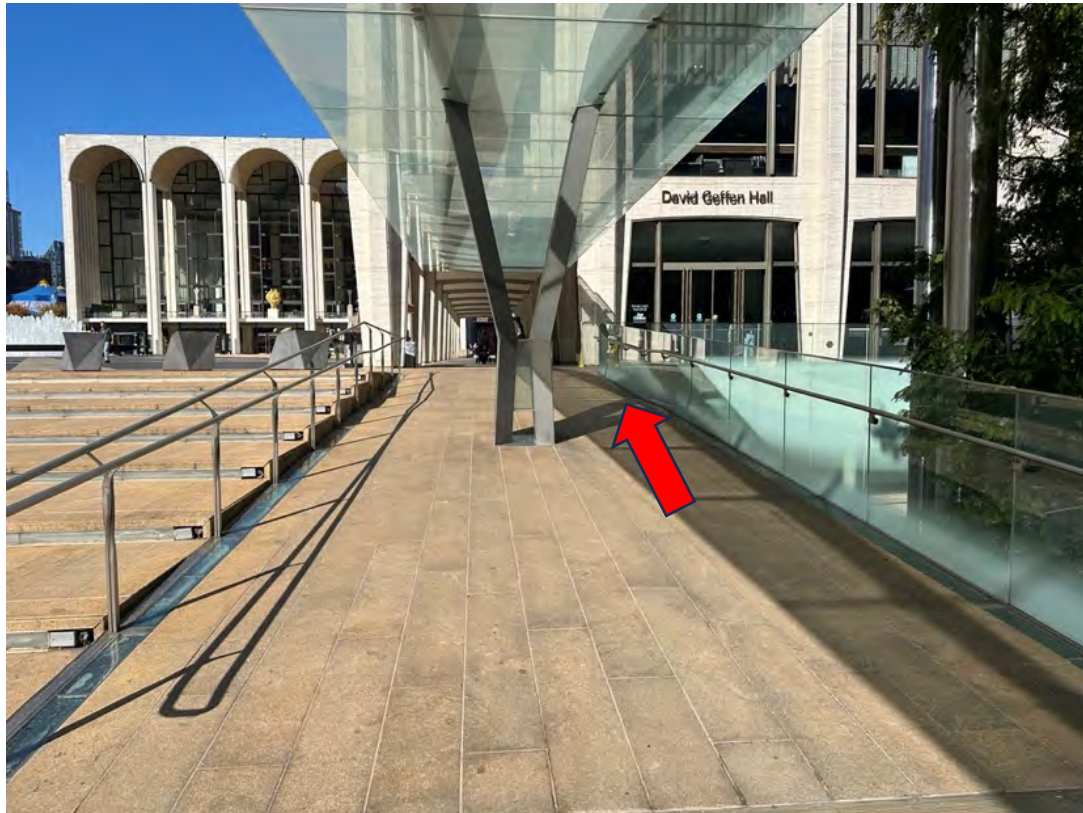
- Designated accessible parking spaces are located in the yellow section of the garage.
- Entrance for the Reserved Parking Section is on Amsterdam Avenue at 64th Street.
- Parking permit and/or sticker must be displayed.
- Advance reservations for parking include a \$5 service charge.
- Height restrictions for vans apply.

To reserve parking, visit online at LincolnCenterParking.org.

Lobby and Welcome Center:

David Geffen Hall is accessible from Columbus Avenue by ramps and stairs, as well as from the concourse level via escalator.

The building will open at 9:30am.



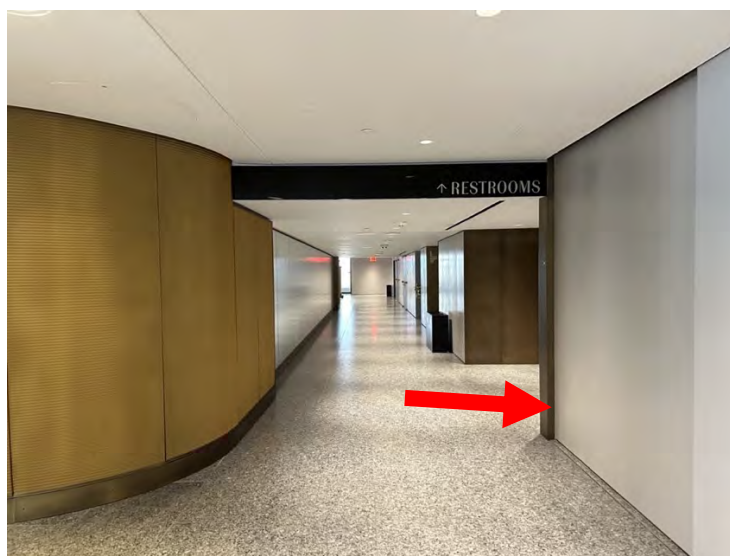
The Welcome Center includes the Box Office, seating, and coffee and snacks available for purchase. It is on the corner of West 64th and Columbus Avenue inside David Geffen Hall.

The LeFrak Lobby in David Geffen Hall includes chairs, tables, benches, and couches and is a comfortable place to sit before the rehearsal begins. It will open to the public starting at 9:30am and will stay open to the public all day.



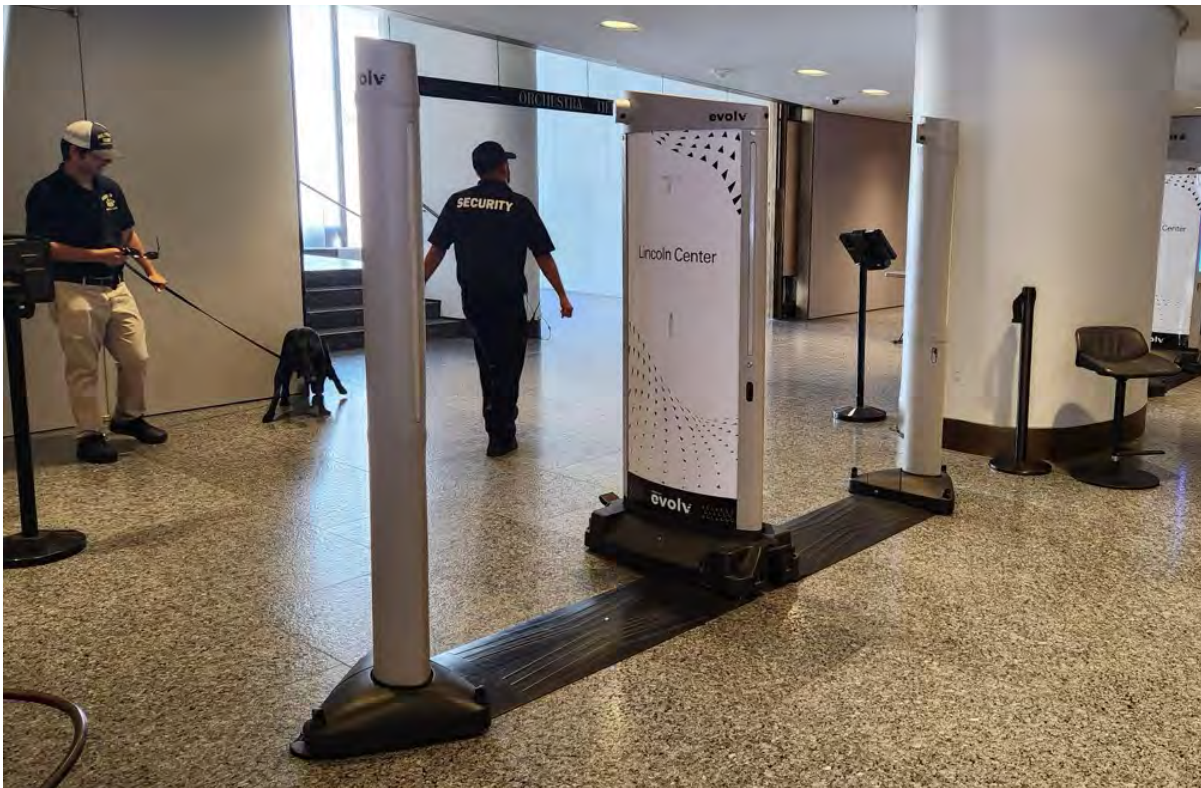
Photo by Nicholas Knight

All gender accessible restrooms and a water bottle filling station are available in the LeFrak Lobby. Free Coat check is available in the LeFrak Lobby behind the large lobby screen. After the rehearsal, guests are welcome to stay in the LeFrak Lobby or in the Welcome Center to relax and eat.



Audience Entrance and Security Gate:

At about 9:45am, ticket scanners and security guards will be ready to welcome guests to go up to the theater. Have your ticket ready to show before going through an Evolv machine at the security checkpoint. It might light up or make noise. A security guard might ask to check bags, and a working dog might sniff guests or their belongings.



Guests can take the escalator, stairs, or elevator up to Orchestra, Tier 1 and Tier 2 and sit in any open seat. Theater doors open at 9:45am.



Visit the Grand Promenade for space to eat or drink. In the theater, bottled water is permitted.

Restrooms:

Accessible companion restrooms, single restrooms designed for one person who uses a wheelchair and one companion, are located on the orchestra level and all tiers.

Infant changing tables are available at every level.

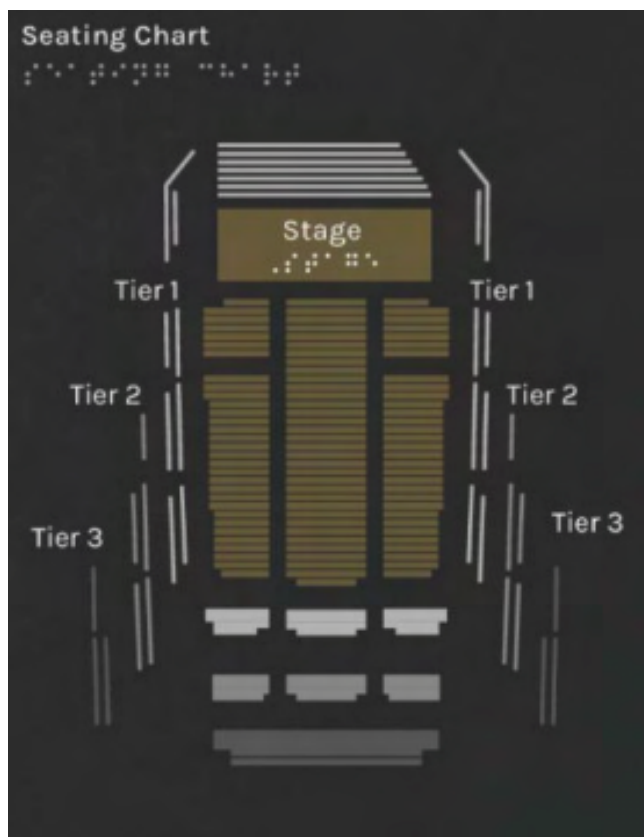
Adult changing tables are available upon request. If you require this feature, please contact access@lincolncenter.com or 212 875 5375 to arrange for features to meet your needs.

About the Performance Space

This Relaxed Rehearsal will take place in the Wu Tsai Theater inside of David Geffen Hall. The theater has an orchestra, with long rows of seating with steps between most rows, and two balconies with seating that wraps around four sides of the theater.



This is a ticketed performance with general admission seating. Guests are welcome to sit in any open seat that best fits their needs.



There are seats on accessible routes on each level of the Wu Tsai Theater.

Elevators are available to reach accessible seating locations. Staff are available to direct guests to their seats.

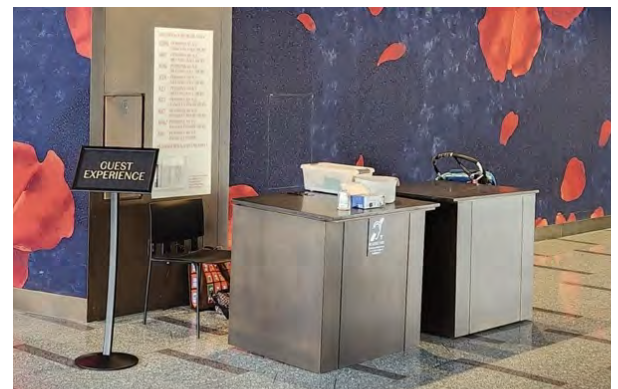
During the Rehearsal:



Photo Credit: Lawrence Sumulong

This is a working rehearsal. You may notice the musicians pause, discuss, or replay sections of music. At about 11:45 am, the musicians will take a 15-minute break, marking the beginning of intermission. Guests can use this time to use the bathroom, get a snack, or take a break. Guests can also stay in their seats and wait for the musicians to resume practicing. The rehearsal will end at about 12:50 pm.

Guests can enter and leave the theater during the rehearsal and move around the hall as needed. Guests are welcome to applaud or make sound while enjoying the rehearsal. Staff are present near theater doors and at the Guest Experience podium on the Grand Promenade to source accommodations or provide assistance.



During the rehearsal, phones and personal devices are welcome for access needs, however we encourage all guests to turn ringers off. Photos or videos are not permitted inside the hall.

About the Program

Past meets present in this captivating program led by Jonathon Heyward. Explore Beethoven in a new light with Iman Habibi's *Jeder Baum spricht*, a meditation on nature and the environment written in dialogue with Beethoven's Fifth and Sixth symphonies and commissioned for the 250th anniversary of his birth. Discover the relatively unknown music of Louise Farrenc, with her powerful Overture No. 1, written in 1834 and inspired by the Viennese classicism of Beethoven. Hear the titan himself with Beethoven's Seventh Symphony and his famed "Triple Concerto," featuring soloists from the orchestra, concertmaster Ruggero Alliffranchini and principal cellist Ilya Finkelshteyn, alongside pianist Leonora Armellini.

The orchestra may not play every piece in full. The time musicians spend working on each piece will depend on what needs to be rehearsed.

Festival Orchestra of Lincoln Center

The Festival Orchestra of Lincoln Center is a chamber orchestra that comes together during Lincoln Center's *Summer for the City* to celebrate and share the beauty of classical music. The ensemble, formerly the Mostly Mozart Festival Orchestra, is comprised of world class musicians who perform year-round as soloists, chamber musicians, and in other ensembles across Lincoln Center's campus and around the globe.

What to Expect at a Relaxed Rehearsal

- Guests are able to enter and leave the audience space throughout the event, as needed
- Guests can vocalize or move throughout audience space
- Fellow audience members are asked to create a no “shushing” zone
- House lights adjusted so that venue is never fully dark
- Attention to bright lights, loud noises, and surprise sensory elements, described in advance
- Chill Out Space for guests to take a break and rejoin performance when ready
- Visual guide, with clear instructions, shared before event
- Noise-reducing headphones and fidgets available to borrow
- Staff members and artists are trained in access and inclusion best practices

For more relaxed performances, visit lincolncenter.org/relaxed

Festival Orchestra of Lincoln Center



Photo Credit: Lawrence Sumulong

Jonathon Heyward, *Renée and Robert Belfer Music Director*

Violins

Ruggero Alliffranchini
(Concertmaster)
Emily Nebel (Associate
Concertmaster)
Laura Frautschi (Principal Second)
Martin Agee
Lilit Gampel
Michael Gillette
Suzanne Gilman
Amy Kauffman
Sophia Kessinger
Siwoo Kim



Violins

Katherine Livolsi-Landau
Kayla Moffett
Maureen Nelson
Ronald Oakland
Michael Roth
Deborah Wong



Violas

Shmuel Katz (Principal)
Chihiro Allen
Meena Bhasin
Danielle Farina
Elzbieta Weyman



Cellos

Ilya Finkelshteyn (Principal)
Ted Ackerman
Ann Kim
Alvin McCall



Double Basses

Jeffrey Turner (Principal)
Lou Kosma



Flutes

Jasmine Choi (Principal)
Tanya Dusevic Witek



Oboes

Ryan Roberts (Principal)
Nick Masterson



Clarinets

Jon Manasse (Principal)
Christopher Pell



Bassoons

Marc Goldberg (Principal)
Tom Sefčovic



French Horns

Lawrence DiBello (Principal)
Richard Hagen



Trumpet

Neil Balm (Principal)



Timpani

David Punto (Principal)



Librarian

Nishana Dobbeck

Personnel Managers

Neil Balm

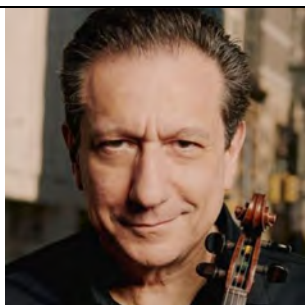
Jonathan Haas

Sean Statser

Gemini Music Productions, Ltd.

Soloists

These three musicians will be featured soloists for the rehearsal. They will play their part of the music while the rest of the orchestra supports them.



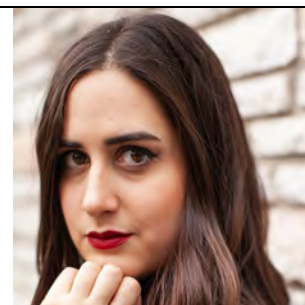
Violin

Ruggero Alliffranchini



Cello

Ilya Finkelshteyn



Piano

Leonora Armellini

Chill Out Spaces:

Chill Out spaces are available on each level for guests to take a break during the rehearsal. Each chill out space has a variety of seating options, sensory materials like fidgets, weighted lap pads, and sunglasses, and mindfulness cards for self-regulation.

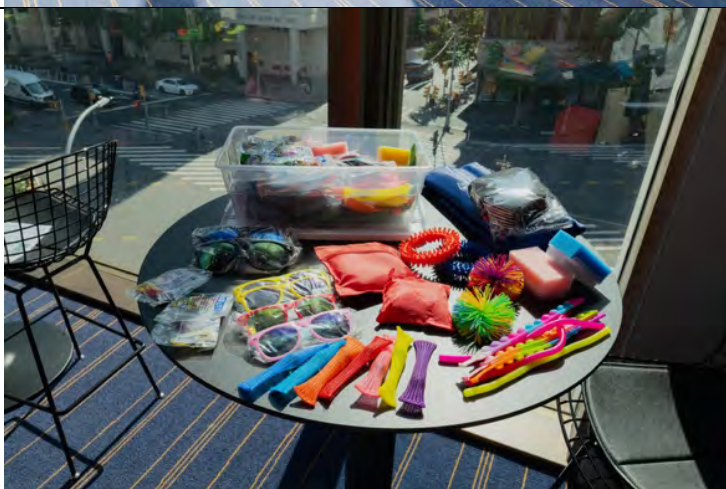
Grand Promenade, outside the Orchestra Level on the right side of the house, has seating and a screen to watch and listen to the performance.



First Tier, in the Music Box, a room with a closed door, away from the crowd and noise of the lobby and the performance.



Second Tier, in the Music Box overlook, a room with a closed door, away from the crowd and noise of the lobby and performance.



Accommodations:

Large Print and Braille programs will be available at the Head Usher Podium.

Hearing Loops are installed in the Wu Tsai Theater, as well as in commerce points, including Welcome Center's Box Office, Coat Check, Guest Experience Podium on the Grand Promenade, the Lobby Bar and the Center Bar on the Grand Promenade.

Guests can access the sound wirelessly through the hearing loop through their own telecoil-enabled hearing devices. Loop receivers are available.



Chill Out Spaces are located on the Grand Promenade, the First Tier, and the Second Tier of David Geffen Hall. **Noise-reducing headphones, earplugs, fidgets, and other sensory items** are also available to borrow at the Head Usher Podium.



Access Concierge Service: Access Reps, trained to support guests with disabilities, are available to provide 1:1 support for individual guests and their party. **Must be scheduled in advance.**



If you require any additional accommodations, please contact access@lincolncenter.org or 212 875 5375.

After the Rehearsal:

After the event, please visit the feedback station in the Grand Promenade, outside the Orchestra level of the hall, to share your experience at the performance.



For more information about Relaxed Performances at Lincoln Center, visit lincolncenter.org/relaxed or contact access@lincolncenter.org or 212 875 5375.

Explore Lincoln Center's Campus:

Food and Drinks:

Lincoln Center has many different nearby food options on campus:

- **The Coffee Bar** at the Welcome Center in David Geffen Hall serves a variety of coffee, tea and pastries.
- **[The Independent Café](#)** serves all-day breakfast, lunch, snacks, coffee, and dessert. This café is located at 61 West 62nd Street, inside the David Rubenstein Atrium.

Hearst Plaza is open to the public and has seating, corn hole, and a display of bird sculptures flying over the Reflecting Pool.



On Josie Robertson Plaza, a giant disco ball hangs over the Revson Fountain, surrounded by a blue dance floor.



Photo by Lawrence Sumulong

For more information about Lincoln Center Summer for the City programming, venues, and neighborhood recommendations, please visit our website: www.lincolncenter.org/series/summer-for-the-city