

Welcome to Restart Stages at Lincoln Center!



Photo by Richard Termine

We are thrilled to welcome you to Restart Stages at Lincoln Center, including 10 outdoor performance and rehearsal spaces.

This performance takes place in Hearst Plaza, located along West 65th Street between Amsterdam Avenue and Broadway.

Getting to Lincoln Center

Travel Options:

Lincoln Center is on the Upper West Side of Manhattan, between West 62nd and 66th Streets and Columbus and Amsterdam Avenues.

BY SUBWAY: Lincoln Center is a short distance from the **1** train at West 66th Street and a slightly longer distance from the **A, B, C, D** or **1** trains at 59th Street—Columbus Circle. Both subway stations are accessible via elevator.



BY BUS: The **M5, M7, M10, M11, M66,** and **M104** bus lines all stop within one block of Lincoln Center.

Access-A-Ride:

If you need an address for Access-A-Ride we suggest **144 West 65th Street** (near Film at Lincoln Center).

Pick-Up/Drop-Off:

West 62nd Street or the David Geffen Hall or David H. Koch Theater entrance ramps on the corner of West 63rd and 65th Streets and Columbus Avenue. Accessible Entry: Guests can enter via the glass elevator on West 65th Street between Broadway and Amsterdam Avenue.

Performance Venue: Hearst Plaza



The performance is in **Hearst Plaza** which is located between the Metropolitan Opera House and the Laurie M. Tisch Illumination Lawn. The stage is in front of The New York Public Library for the Performing Arts.

Accessible Entry:

The accessible entrance is located on West 65th Street (between Amsterdam Avenue and Broadway) between the Elinor Bunin Munroe Film Center and the Lincoln Center Theater.

Guests can take the stairs or the large glass elevator which will bring me up to the plaza level. Lincoln Center staff may ask visitors to wait in line before entering the plaza level.



Ticketing & Security Checkpoint:

Visitors will be greeted by Lincoln Center staff who will scan tickets. Masks are required for all visitors, including fully vaccinated guests.



Photos by Sachyn Mital



Accommodations:

There will be an Accessibility table to assist with accommodations including ear plugs, and Assistive Listening Devices with headsets and neck loops.

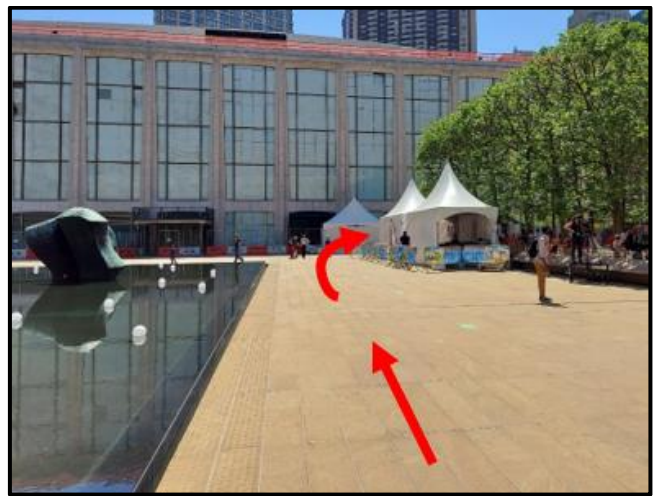
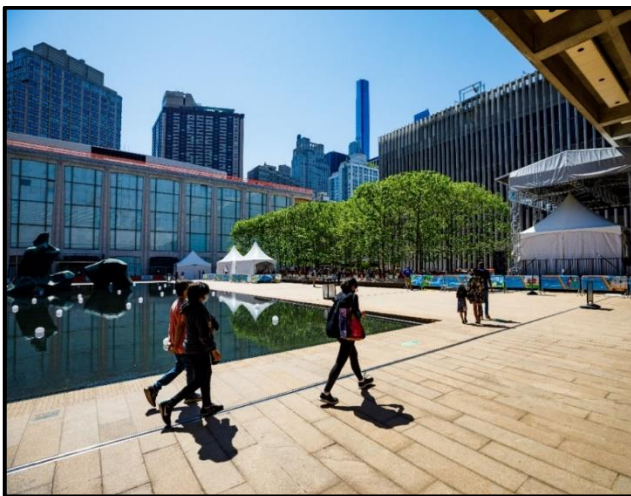


Guests are encouraged to bring their own headphones and standard jack headsets.

Wheelchairs are available to borrow during the performance and on campus. If you require any additional accommodations, please contact access@lincolncenter.org or [212 875 5375](tel:2128755375).

Performance Space:

After the Security Checkpoint, guests will be directed to the performance space, around the Paul Milstein Reflecting Pool and past the white tents. Lincoln Center staff will be available for questions or assistance in finding accessible routes.



Restrooms:

Visitors who arrive early are advised to use the restroom if needed. Guests are encouraged to remain in their pod during the performance.

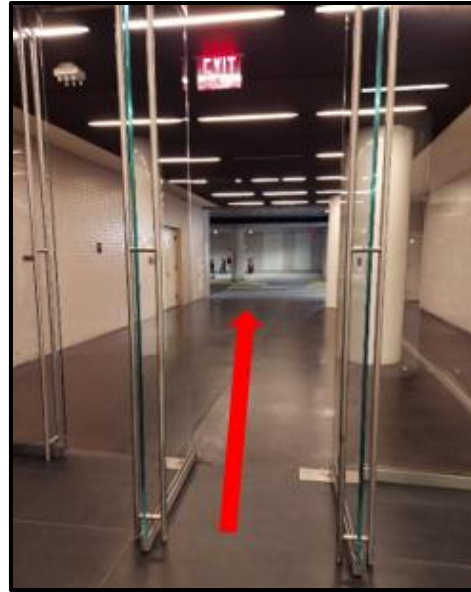
Before entering Hearst Plaza, there are restrooms located on the Concourse Level of Lincoln Center, accessible through the glass doors under the Lincoln Center Theater awning on West 65th Street.



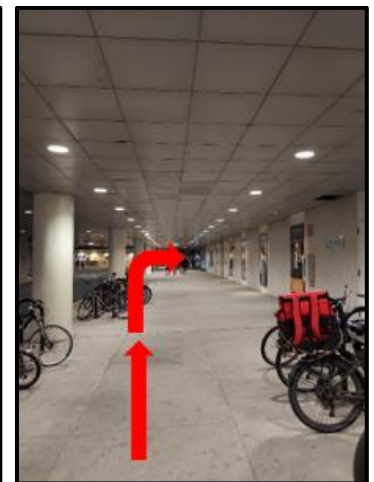
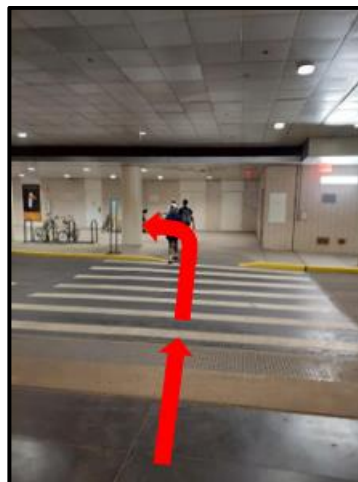
Guests will walk down a long hallway with black floor tiles and large white poles until you reach another set of glass doors.



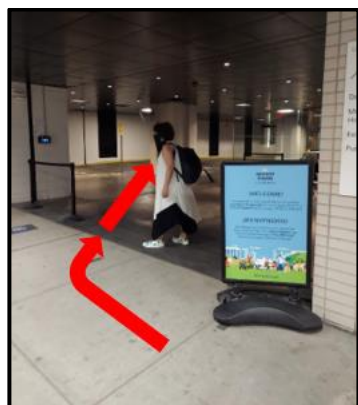
After the long hallway, walk through the glass doors to a crosswalk (check to make sure there are no cars before crossing).



Then, cross the street and turn left past some bike racks. Keep walking along the sidewalk until there is a glass wall on the right.



Walk past the glass wall and the restrooms will be on the right.



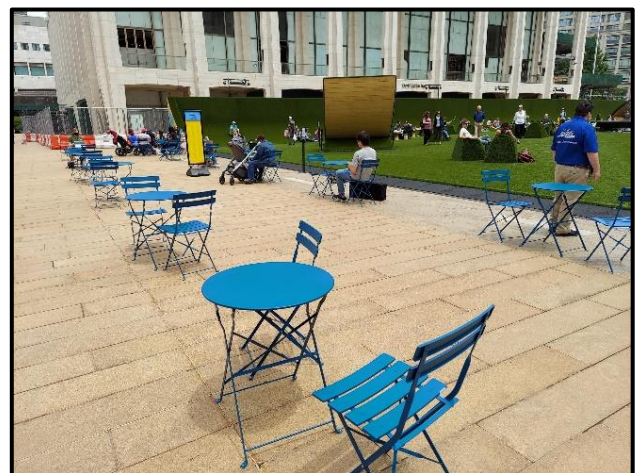
While You Wait

Guests who arrive early can explore the public areas on campus while they wait.

The GREEN is an installation of grass-like material surrounding the large fountain in Josie Robertson Plaza.



This space is open to the public and includes a snack bar to get food or drinks before the show. [Click here](#) to learn more about The GREEN.



Photos by Sachyn Mital

The New York Public Library for the Performing Arts has opened an **Outdoor Reading Room and seating area**.

This space is located on the corner of Amsterdam Avenue and 65th Street. Visit the library's website to [learn more](#).



There will also be **on-campus art installations** if you would like to see the visual art featured on campus. [Click here](#) to learn more about **“We Belong Here.”**



Photo: Andrew Kerekes