



12,000 BTU/H SIRIUS HEAT WALL MOUNTED HEAT PUMP

SUBMITTAL COVER SHEET

SIRIUS HEAT™

PROJECT NAME _____

LOCATION _____

ARCHITECT _____

ENGINEER _____

CONTRACTOR _____

REFERENCE _____

SUBMITTED BY _____ DATE _____

| Indoor Unit (IDU): DRAW12F1B | Outdoor Unit (ODU): DRA1H12S1A | Wireless Remote Control |
|---|---|--|
|  |  |  |

PRODUCT FEATURES

- Up to 100% heating capacity at 0°F
- Low ambient heating down to -22°F
- Low ambient cooling down to 5°F
- Wireless Remote Control with "Follow Me" Technology
- Variable Speed Inverter Compressor
- Auto Restart
- Sleep Mode
- Turbo Mode
- Quiet operation
- 46°F Freeze Protection
- Included base pan heater
- Refrigerant leak detection
- Anti-corrosive fin coating

| SYSTEM DATA | |
|------------------------------|--------------------|
| Refrigerant Type | R-410A |
| Refrigerant Charge (oz.) | 41.62 |
| Design Pressure (PSIG) | 550/340 |
| Indoor/ Outdoor Coil Coating | Golden Fin Coating |

| EFFICIENCY DATA | |
|-----------------|------|
| SEER2 | 23.1 |
| EER2 | 13.0 |
| HSPF2 | 10.5 |
| SEER | 22.0 |
| EER | 13.0 |
| HSPF | 12.7 |
| COP at 47°F | 3.60 |
| COP at 5°F | 1.88 |

| CAPACITIES | | |
|---------------------------|------------------------------|-------|
| Cooling Capacity (BTU/hr) | Rated at 95°F ¹ | 12000 |
| | Sensible at 5°F ³ | 8210 |
| | Minimum | 3700 |
| | Maximum | 13300 |
| Heating Capacity (BTU/hr) | Rated at 47°F ² | 12000 |
| | Maximum at 5°F ⁴ | 11000 |
| | Minimum | 5100 |
| | Maximum | 14300 |



Specifications are subject to change without notice.

© 2023 Ferguson Enterprises LLC
www.durastar.com



12,000 BTU/H SIRIUS HEAT WALL MOUNTED HEAT PUMP

SPECIFICATIONS

SIRIUS HEAT™

| LINE SET REQUIREMENTS | |
|---------------------------------|-----------------|
| Connection Type | Flare |
| Liquid | Ø1/4" (Ø6.35mm) |
| Gas | Ø1/2" (Ø12.7mm) |
| Pre-Charge Length | 25' |
| Minimum Length | 10' |
| Maximum Length | 82' |
| Maximum Height Differential | 33' |
| Additional Refrigerant (oz./ft) | 0.16 |

| OUTDOOR UNIT | | |
|---|--------------------------|-----------|
| Unit Dimensions | Width | 31-11/16" |
| | Depth | 13" |
| | Height | 21-13/16" |
| Carton Dimensions | Width | 36" |
| | Depth | 14-9/16" |
| | Height | 24-3/16" |
| Net Weight | 74 lbs. | |
| Gross Weight | 80 lbs. | |
| Cooling Operating Temperature | 5°F - 122°F | |
| Heating Operating Temperature | -22°F - 75°F | |
| Voltage/Phase/Frequency | 208-230V, 1 Phase, 60 Hz | |
| Voltage Range | 187-253V | |
| Recommended Breaker (Amps) | 15 | |
| Minimum Circuit Ampacity (Amps) | 15 | |
| Communication Wire Size | 14*4 AWG Stranded | |
| Rated Current - Cooling (Amps) ¹ | 2.5 | |
| Rated Current - Heating (Amps) ² | 4.3 | |
| Sound Pressure (dB(A)) | 56 | |

| INDOOR UNIT | | |
|------------------------------|---------------|-----------|
| Unit Dimensions | Width | 31-9/16" |
| | Depth | 7-7/8" |
| | Height | 11-5/8" |
| Carton Dimensions | Width | 34-7/16" |
| | Depth | 11-1/4" |
| | Height | 14-15/16" |
| Net Weight | 18.7 lbs. | |
| Gross Weight | 24.3 lbs. | |
| Indoor Unit Air Flow (CFM) | Low | 153 |
| | Medium | 194 |
| | High | 291 |
| Moisture Removal (Pints/day) | 73.55 | |
| Drain Port O.D. | Ø5/8" (Ø16mm) | |
| Recommended Breaker (Amps) | 15 | |
| Sound Pressure (dB(A)) | Low | 24 |
| | Medium | 36 |
| | High | 42 |

| COMPRESSOR | |
|------------------|--------------------|
| Type | DC Rotary Inverter |
| Oil Type | Ester Oil VG74 |
| Oil Charge (oz.) | 11.8 (350 ml) |

¹ AHRI Rated at 95°F (AFull).

² AHRI Rated at 47°F (H1Full).

³ Sensible Capacity: Indoor 80°F DB, 67°F WB // Outdoor 5°F DB, 4°F WB

⁴ AHRI Rated Capacity at 5°F (H42)

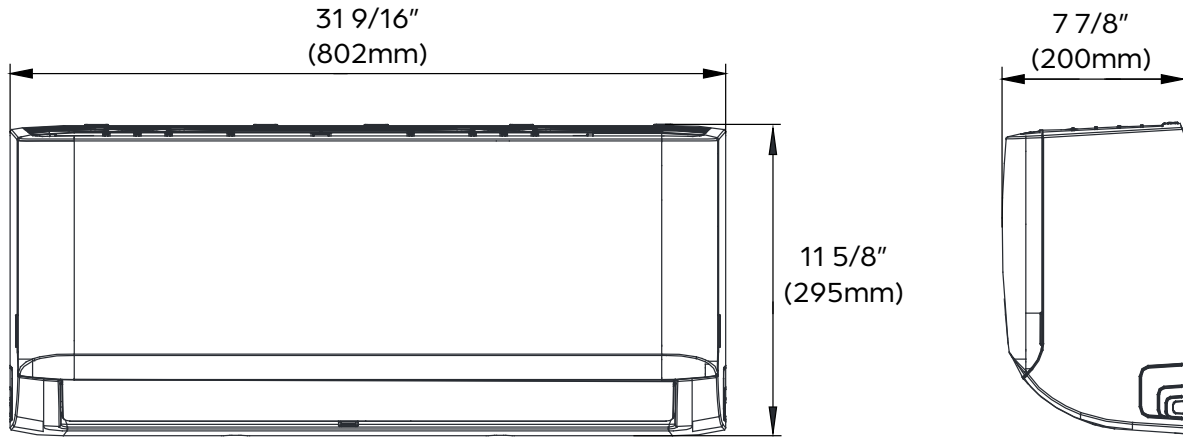


SIRIUS HEAT™

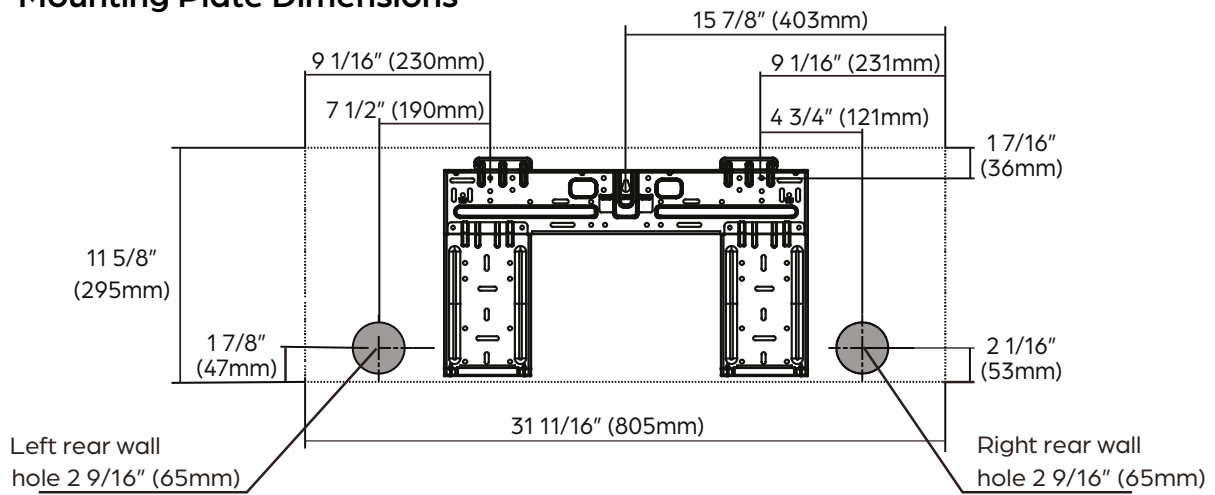
12,000 BTU/H SIRIUS HEAT WALL MOUNTED HEAT PUMP

IDU DIMENSIONS - DRAW12F1B

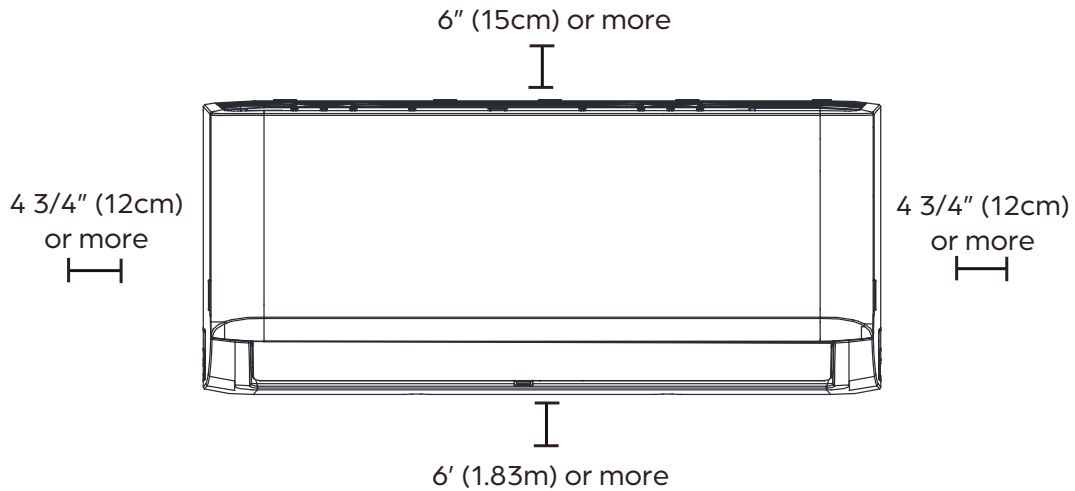
Unit Dimensions



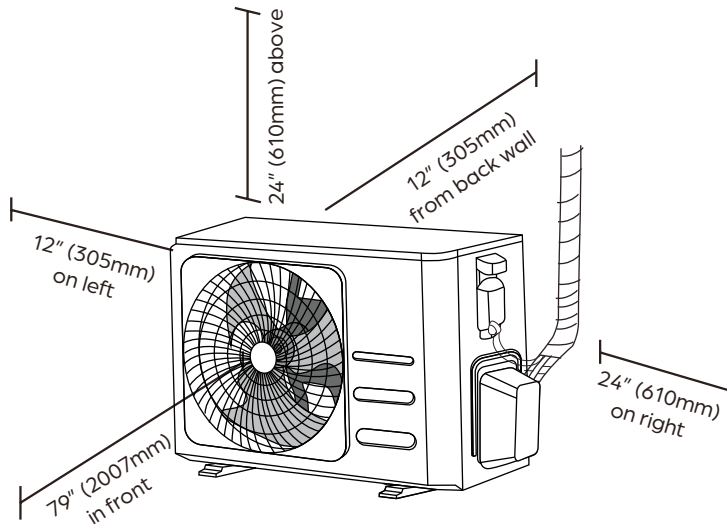
Mounting Plate Dimensions



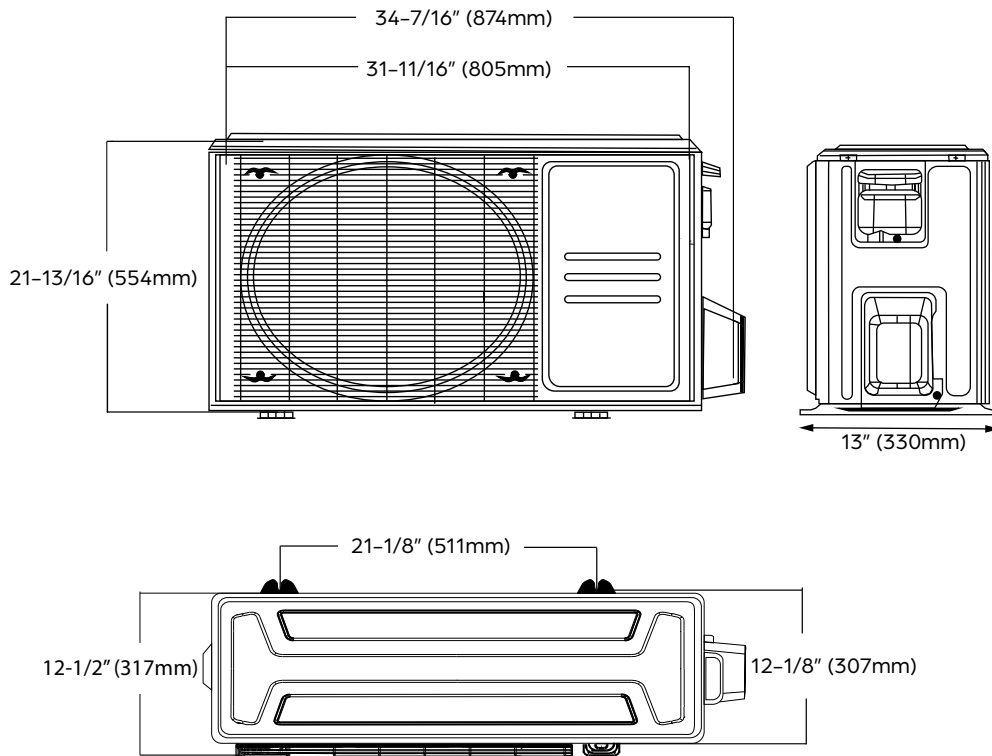
Clearance Distances



Clearances



Dimensions



NOTE

- Illustrations in this document are for explanatory purposes. The actual shape of your mini-split equipment may vary slightly.