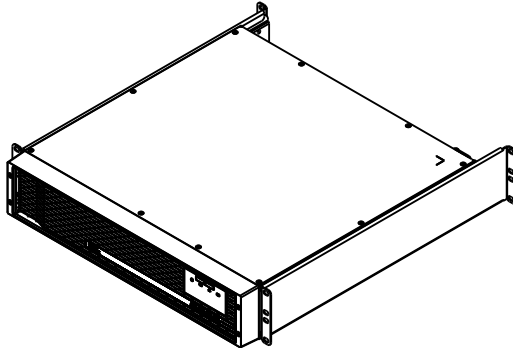
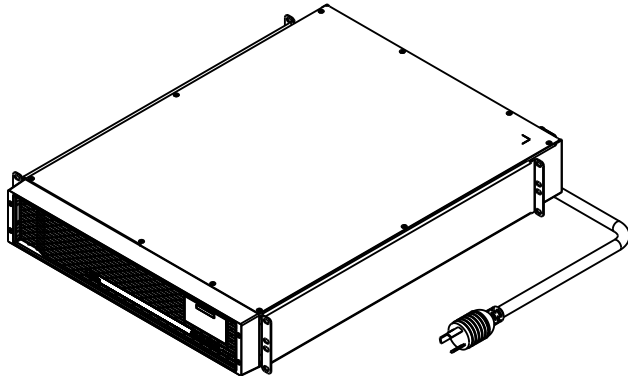
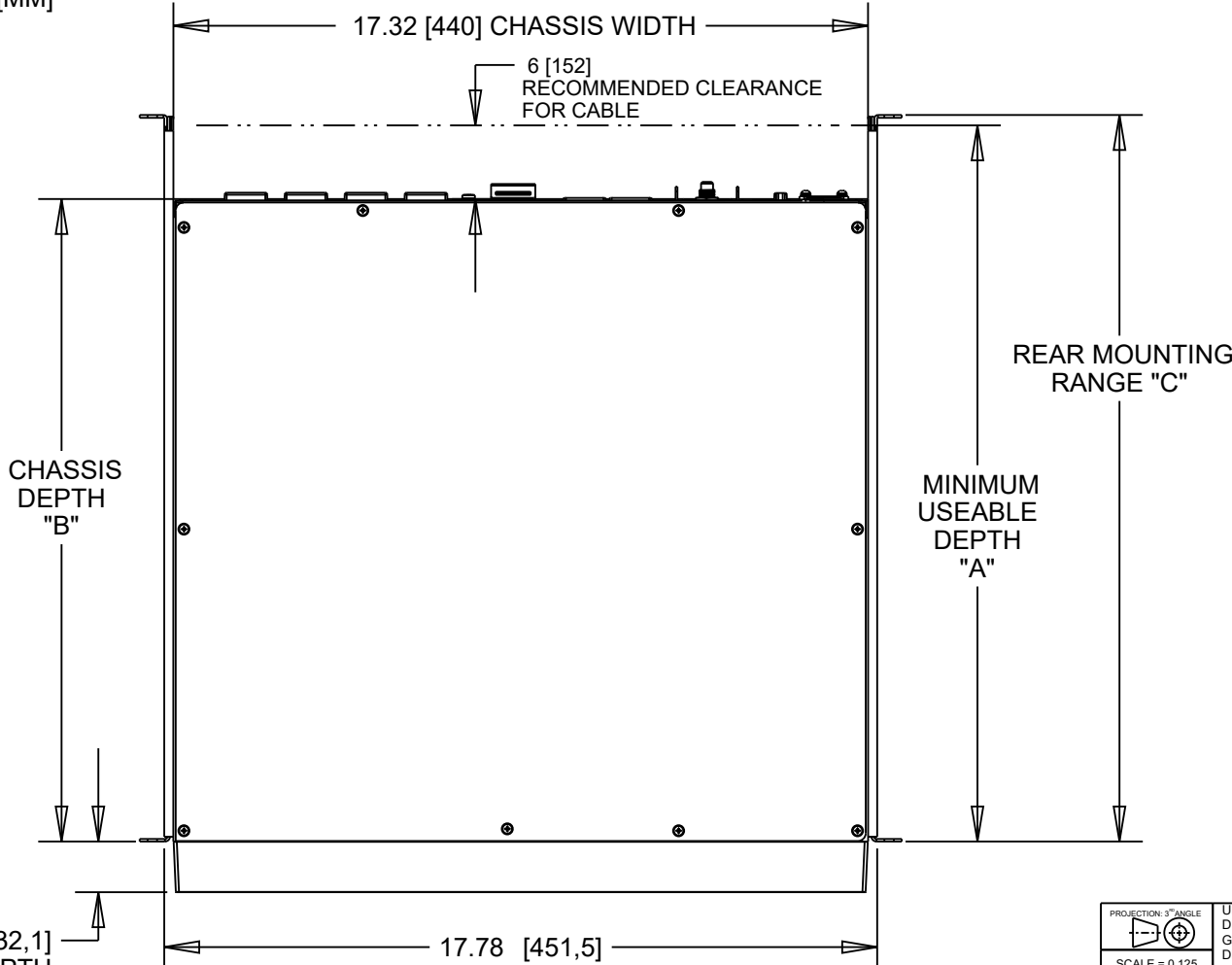
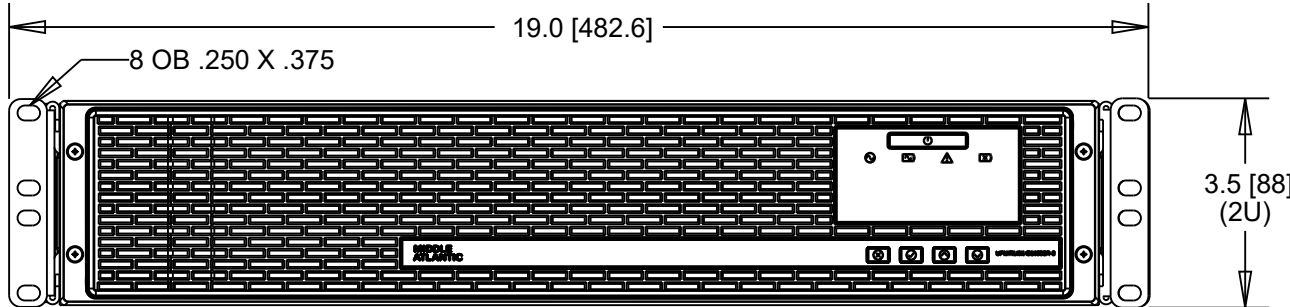
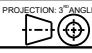


1		2		3		4		5		6		7		8									
MODEL#		TITLE		MINIMUM USEABLE DEPTH "A"		CHASSIS DEPTH "B"		REAR MOUNTING RANGE "C"		AMPERAGE RATING		REV		DESCRIPTION		REV BY	REV DATE	APP'D BY	DATE APP.				
UPX-OL1000R-2		1000VA 120V OL UPS LOCAL BANK CONTROL		22 [559]		16 [406]		18-32 [457-813]		15AMP		A		PRODUCTION RELEASE		LM	01/16/24	NK	01/18/24				
UPX-OL1500R-2		1500VA 120V OL UPS LOCAL BANK CONTROL		22 [559]		16 [406]		18-32 [457-813]		15AMP		<div><p>UPX-OL1000R-2, UPX-RLNK-OL1000R-2, UPX-RLNK-OL1000R-8 UPX-OL1500R-2, UPX-RLNK-OL1500R-2, UPX-RLNK-OL1500R-8 UPX-OL2000R-2, UPX-RLNK-OL2000R-2, UPX-RLNK-OL2000R-8</p><div><p>UPX-OL3000R-2 UPX-RLNK-OL3000R-2 UPX-RLNK-OL3000R-6</p></div></div>											
UPX-OL2000R-2		2000VA 120V OL UPS LOCAL BANK CONTROL		22 [559]		16 [406]		18-32 [457-813]		20AMP													
UPX-OL3000R-2		3000VA 120V OL UPS LOCAL BANK CONTROL		28 [711]		22 [559]		20-36 [508-915]		30AMP													
UPX-RLNK-OL1000R-2		1000VA 120V OL UPS RLNK BANK CONTROL		22 [559]		16 [406]		18-32 [457-813]		15AMP													
UPX-RLNK-OL1500R-2		1500VA 120V OL UPS RLNK BANK CONTROL		22 [559]		16 [406]		18-32 [457-813]		15AMP													
UPX-RLNK-OL2000R-2		2000VA 120V OL UPS RLNK BANK CONTROL		22 [559]		16 [406]		18-32 [457-813]		20AMP													
UPX-RLNK-OL3000R-2		3000VA 120V OL UPS RLNK BANK CONTROL		28 [711]		22 [559]		20-36 [508-915]		30AMP													
UPX-RLNK-OL1000R-8		1000VA 120V OL UPS RLNK OUTLET CONTROL		22 [559]		16 [406]		18-32 [457-813]		15AMP													
UPX-RLNK-OL1500R-8		1500VA 120V OL UPS RLNK OUTLET CONTROL		22 [559]		16 [406]		18-32 [457-813]		15AMP													
UPX-RLNK-OL2000R-8		2000VA 120V OL UPS RLNK OUTLET CONTROL		22 [559]		16 [406]		18-32 [457-813]		20AMP													
UPX-RLNK-OL3000R-6		3000VA 120V OL UPS RLNK OUTLET CONTROL		28 [711]		22 [559]		20-36 [508-915]		30AMP													
ALL UNITS IN INCHES [MM]																							
<div></div>																							
<div></div>																							
<div><div><div>PROJECTION: 3° ANGLE</div><div></div><div>SCALE = 0.125</div></div><div>SHEET 1 OF 11</div></div>										<div>UNLESS OTHERWISE SPECIFIED, ALL DIMENSIONS ARE IN INCHES GENERAL TOLERANCES: DEC: 1 PLACE +/-0.1 ANGLE: +/-1° 2 PLACE +/-0.3 FRAC: +/-1/32 3 PLACE +/-0.010 HOLE SIZE: +/-0.002</div>		<div>APPROVALS</div> <div>MODELED LM</div> <div>DRAWN LM</div>		<div>DATE</div> <div>09/21/2023</div> <div>09/21/2023</div>		<div>MIDDLE ATLANTIC</div> <div>A brand of Eldecap</div>				<div>TITLE</div> <div>UPX ONLINE SERIES</div> <div>DWG NO. 120-00046_UPX_ONLINE_SERIES</div> <div>A</div>			
THIS DRAWING CONTAINS TRADE INFORMATION DEEMED TO BE CONFIDENTIAL AND PROPRIETARY PROPERTY OF MIDDLE ATLANTIC PRODUCTS, INC. AND IS TO BE USED ONLY FOR THE PURPOSES FOR WHICH IT IS SUBMITTED AND FURTHER SHALL NOT BE COPIED IN WHOLE OR PART WITHOUT WRITTEN PERMISSION FIRST OBTAINED FROM MIDDLE ATLANTIC PRODUCTS, INC.																							

THIS DRAWING CONTAINS TRADE INFORMATION DEEMED TO BE CONFIDENTIAL AND PROPRIETARY PROPERTY OF MIDDLE ATLANTIC PRODUCTS, INC. AND IS TO BE USED ONLY FOR THE PURPOSES FOR WHICH IT IS SUBMITTED AND FURTHER SHALL NOT BE COPIED IN WHOLE OR PART WITHOUT WRITTEN PERMISSION FIRST OBTAINED FROM MIDDLE ATLANTIC PRODUCTS, INC.

DATE: 2024 REV: B - 07/14/24

A

B

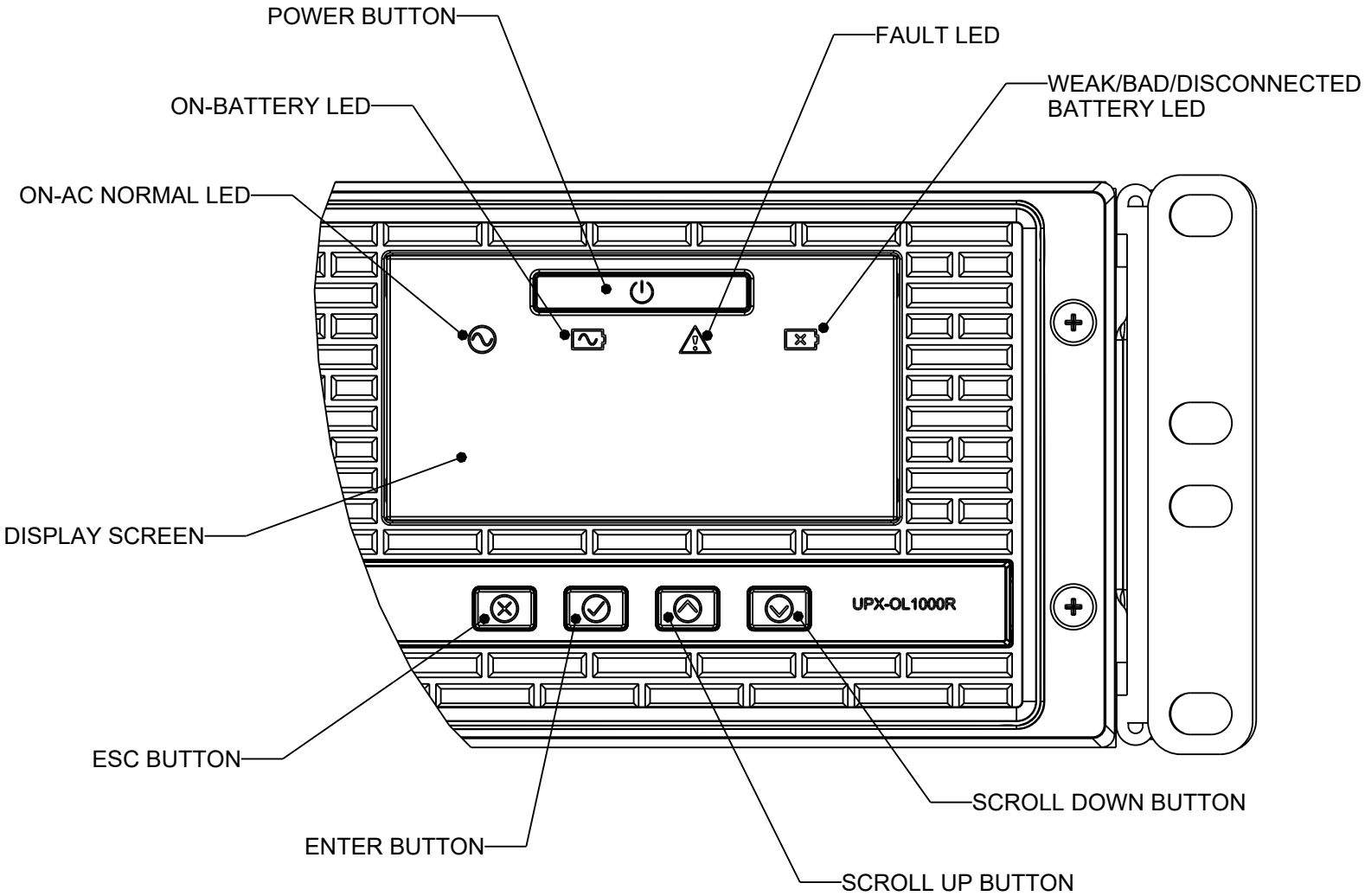
C

D

E

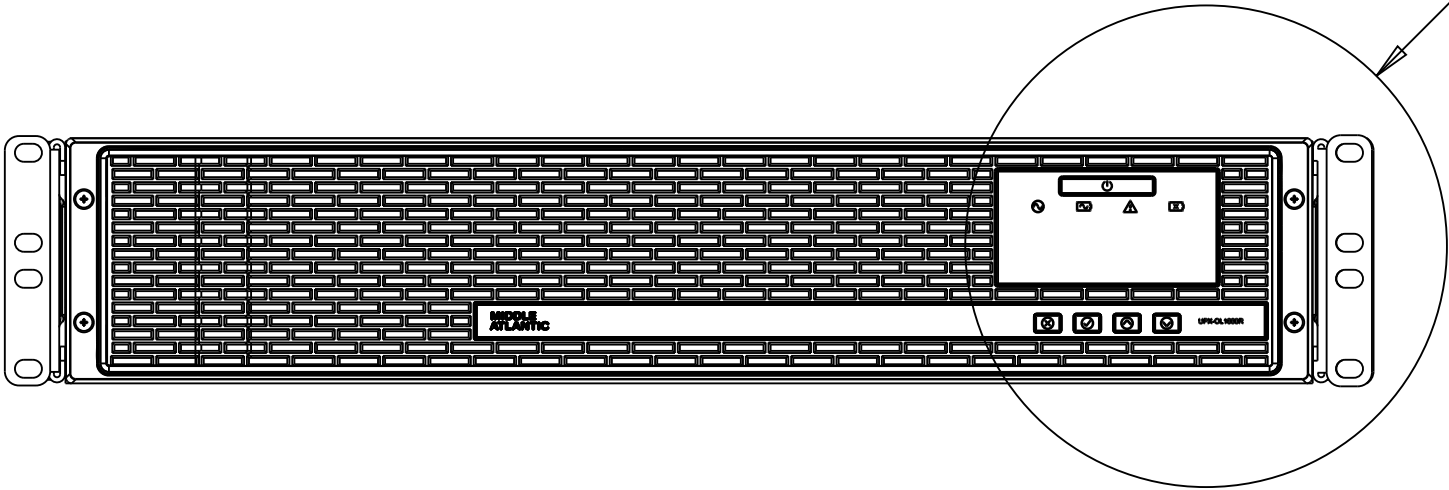
MODEL#	TITLE
UPX-OL1000R-2	1000VA 120V OL UPS LOCAL BANK CONTROL
UPX-OL1500R-2	1500VA 120V OL UPS LOCAL BANK CONTROL
UPX-OL2000R-2	2000VA 120V OL UPS LOCAL BANK CONTROL
UPX-OL3000R-2	3000VA 120V OL UPS LOCAL BANK CONTROL
UPX-RLNK-OL1000R-2	1000VA 120V OL UPS RLNK BANK CONTROL
UPX-RLNK-OL1500R-2	1500VA 120V OL UPS RLNK BANK CONTROL
UPX-RLNK-OL2000R-2	2000VA 120V OL UPS RLNK BANK CONTROL
UPX-RLNK-OL3000R-2	3000VA 120V OL UPS RLNK BANK CONTROL
UPX-RLNK-OL1000R-8	1000VA 120V OL UPS RLNK OUTLET CONTROL
UPX-RLNK-OL1500R-8	1500VA 120V OL UPS RLNK OUTLET CONTROL
UPX-RLNK-OL2000R-8	2000VA 120V OL UPS RLNK OUTLET CONTROL
UPX-RLNK-OL3000R-6	3000VA 120V OL UPS RLNK OUTLET CONTROL

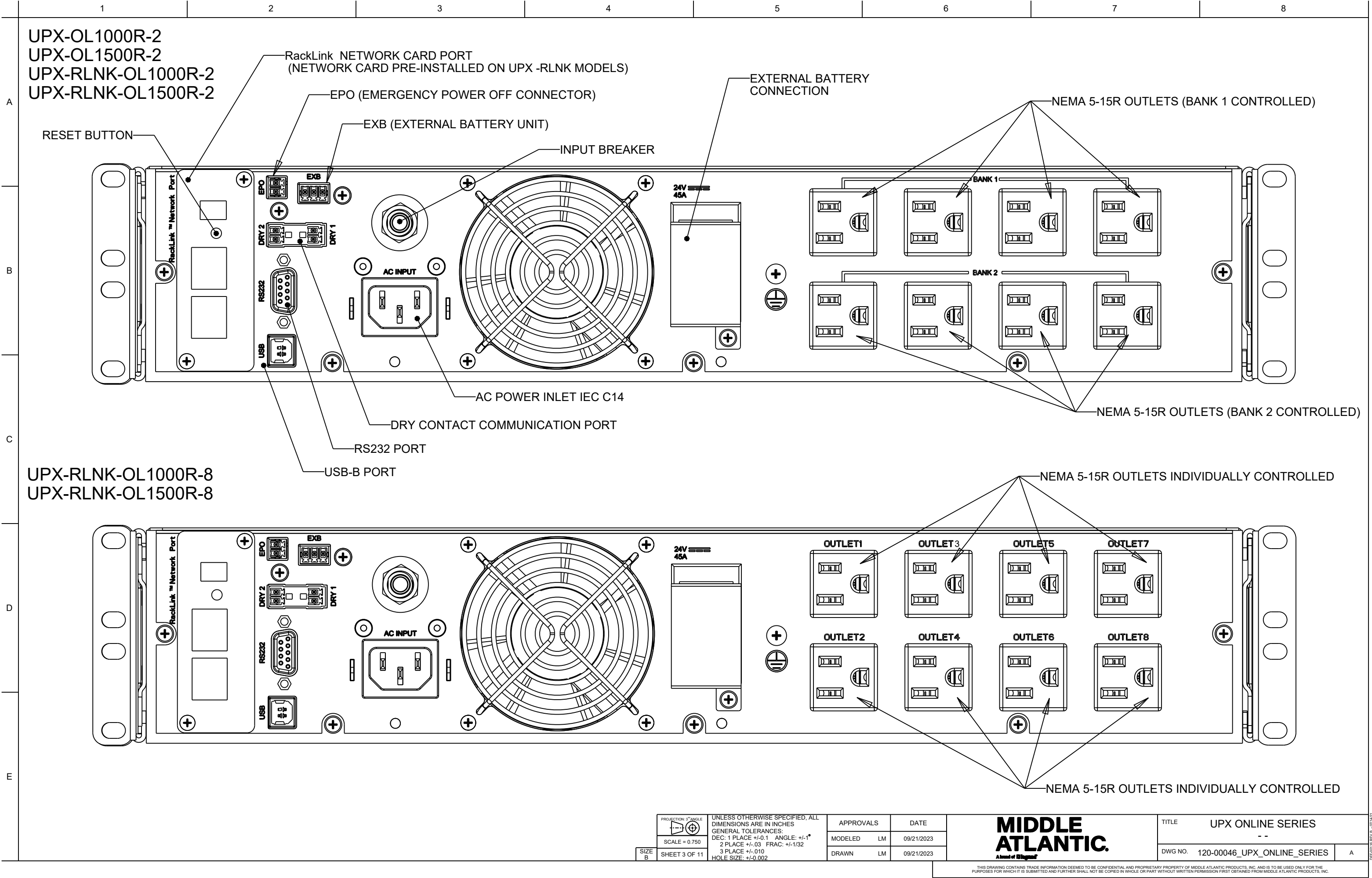
THE FRONT INTERFACE IS THE SAME FOR ALL MODELS.



SEE DETAIL A

MODEL UPX-OL1000R SHOWN





A

B

C

D

E

UPX-OL2000R-2
UPX-RLNK-OL2000R-2

RackLink NETWORK CARD PORT
(NETWORK CARD PRE-INSTALLED ON UPX-RLNK MODELS)

EPO (EMERGENCY POWER OFF CONNECTION)

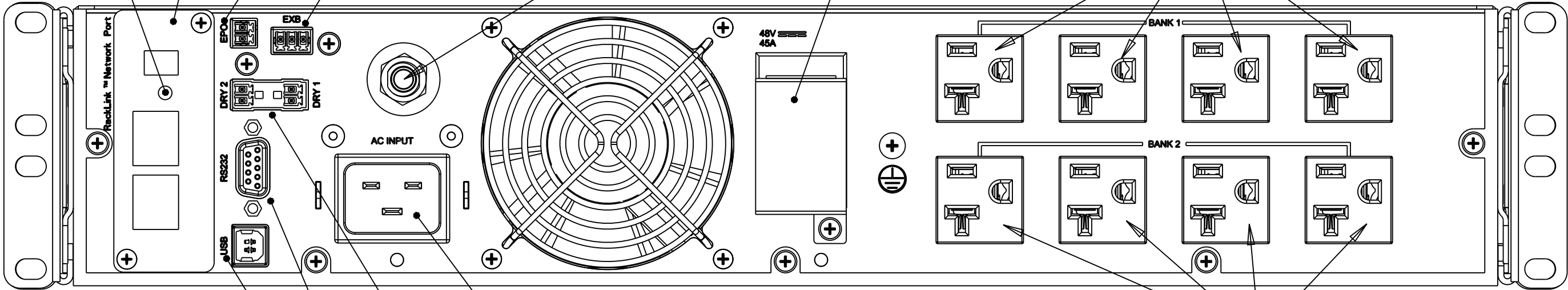
EXB (EXTERNAL BATTERY UNIT)

INPUT BREAKER

EXTERNAL BATTERY
CONNECTION

NEMA 5-20R OUTLETS BANK 1 CONTROLLED

RESET BUTTON



AC POWER INLET IEC C14

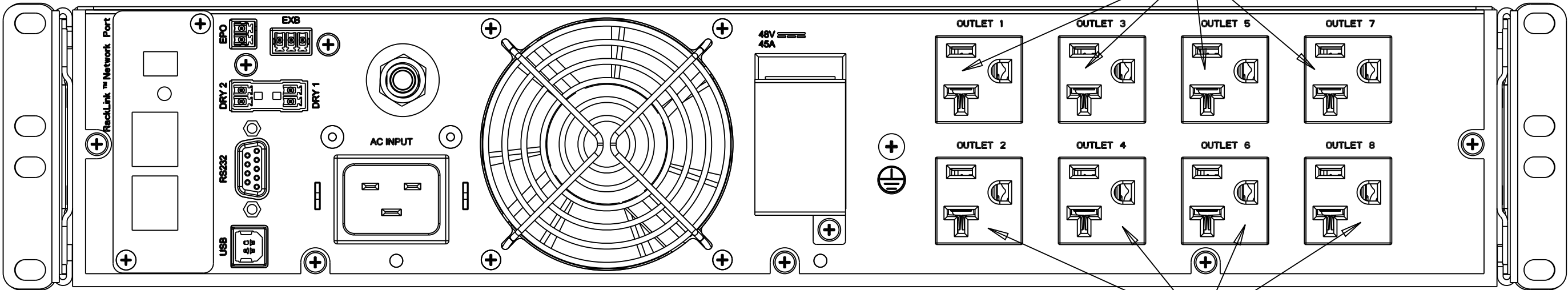
DRY CONTACT COMMUNICATION PORT

RS232 PORT

USB-B PORT

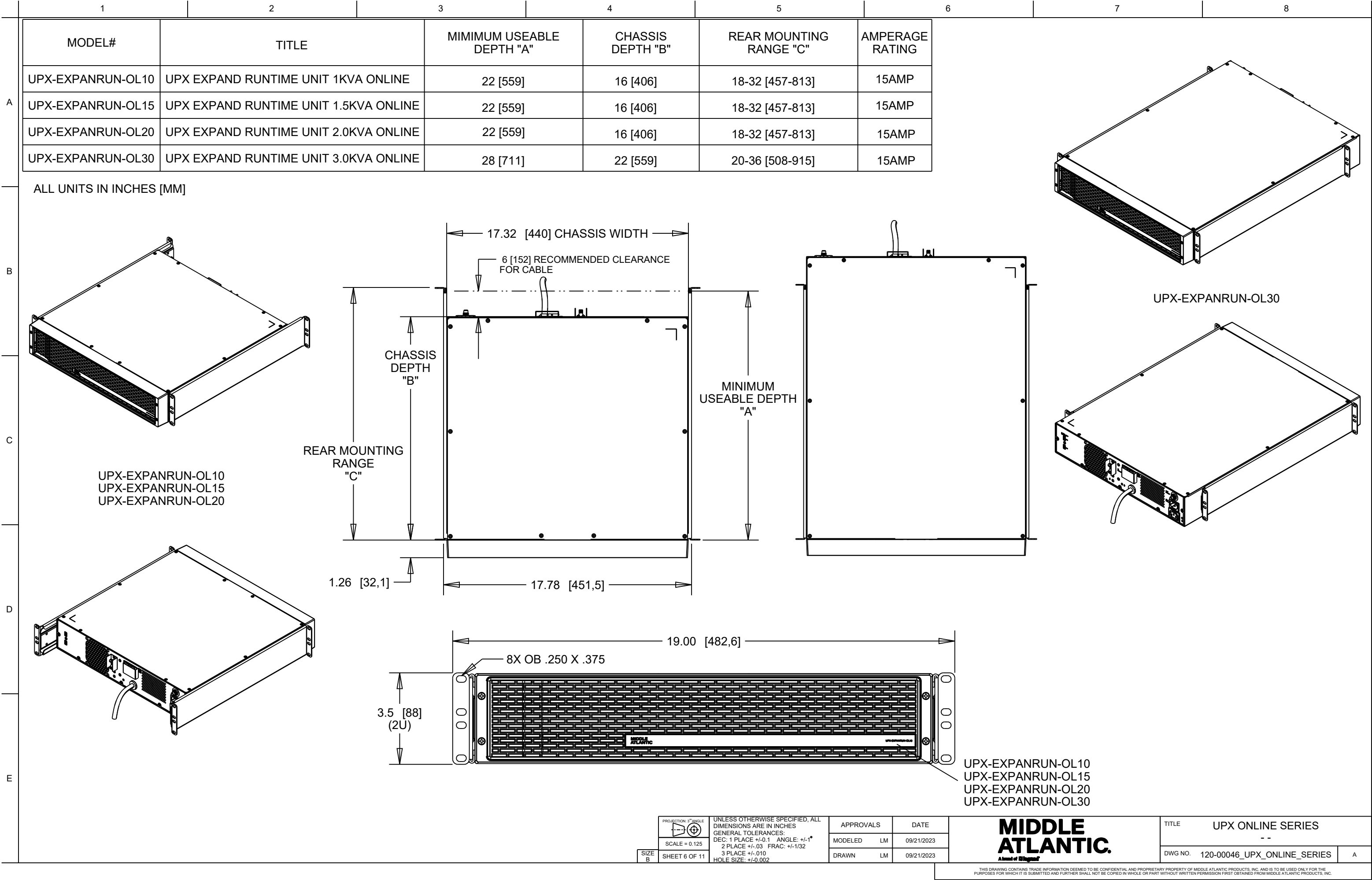
NEMA 5-20R OUTLETS BANK 2 CONTROLLED

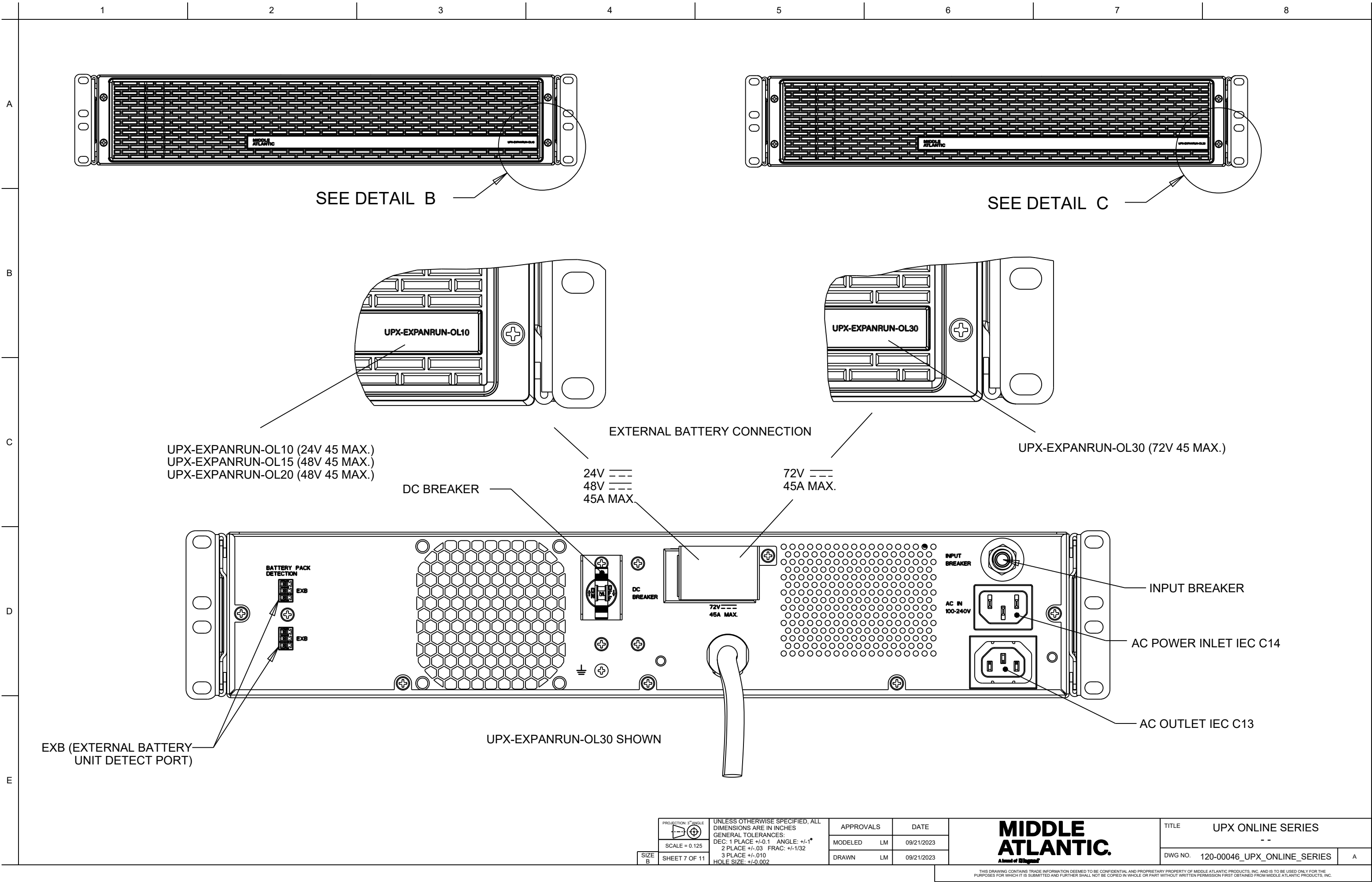
UPX-RLNK-OL2000R-8



NEMA 5-20R OUTLETS INDIVIDUALLY CONTROLLED

NEMA 5-20R OUTLETS INDIVIDUALLY CONTROLLED





	1	2	3	4	5	6	7	8	
A	NEXSYS Online UPS								
	Model	UPX-OL1000R-2 UPX-RLNK-OL1000R-2 UPX-RLNK-OL1000R-8	UPX-OL1500R-2 UPX-RLNK-OL1500R-2 UPX-RLNK-OL1500R-8	UPX-OL2000R-2 UPX-RLNK-OL2000R-2 UPX-RLNK-OL2000R-8	UPX-OL3000R-2 UPX-RLNK-OL3000R-2 UPX-RLNK-OL3000R-6				
	UPS Topology	Online							
	Waveform on Battery	Pure Sine Wave							
	VA	1000VA	1500VA	2000VA	3000VA				
	Watts	1000W	1350W	1800W	2700W				
	Power Factor	0.99	0.9						
	Input								
	Nominal Voltage	120VAC							
	Voltage Range	50V - 150V							
B	Frequency	50-60Hz Autosensing							
	Input Plug Type	SignalSAFE IEC to 5-15P 6' (1.83M)			SignalSAFE IEC to 5-20P 6' (1.83M)		Fixed L5-30P 10' (3.05M)		
	Output								
	Waveform	Pure Sine Wave							
	Selectable Battery Voltage	110/120/127 Vac ±5% (Note: 110Vac selection derates UPS to 90%)							
	On Battery Frequency	50Hz or 60Hz ±5%							
	No. of Outlets	8				7			
	Outlet type	NEMA 5-15R			NEMA 5-20R		(6)NEMA 5-20R & (1) L5-30R		
	Surge Protection	1000 joules							
	Overload Protection	Circuit Breaker							
C	Charger Input Voltage	50VAC-150VAC	50VAC-150VAC	50VAC-150VAC	50VAC-150VAC				
	Transfer Time (line mode<-> battery mode)	0ms							
	Transfer Time (bypass <-> line mode)	4-6ms							
	Fan / Audible Noise	40dB @ 1m variable speed fan when load < 70%	45dB @ 1m variable speed fan when load < 70%	50dB @ 1m variable speed fan when load < 70%					
	BTU's	337	475	593	830				
	Full Load Run Time	2 minutes							
	Half Load Run Time	9 minutes							
	D								
E									

PROJECTION: 3rd ANGLE

SCALE = 0.125

SIZE B

SHEET 8 OF 11

UNLESS OTHERWISE SPECIFIED, ALL DIMENSIONS ARE IN INCHES

GENERAL TOLERANCES:

DEC: 1 PLACE +/-0.1 ANGLE: +/-1°

2 PLACE +/-0.03 FRAC: +/-1/32

3 PLACE +/-0.010

HOLE SIZE: +/-0.002

APPROVALS

DATE

MODELED LM 09/21/2023

DRAWN LM 09/21/2023

MIDDLE ATLANTIC

ALMOST AS ELEGANT

THIS DRAWING CONTAINS TRADE INFORMATION DEEMED TO BE CONFIDENTIAL AND PROPRIETARY PROPERTY OF MIDDLE ATLANTIC PRODUCTS, INC. AND IS TO BE USED ONLY FOR THE PURPOSES FOR WHICH IT IS SUBMITTED AND FURTHER SHALL NOT BE COPIED IN WHOLE OR PART WITHOUT WRITTEN PERMISSION FIRST OBTAINED FROM MIDDLE ATLANTIC PRODUCTS, INC.

TITLE


UPX ONLINE SERIES

DWG NO. 120-00046_UPX_ONLINE_SERIES

A

	1	2	3	4	5	6	7	8												
A	Battery																			
	Recharge time		6-8hrs																	
	Battery Maintenance		Hot Swappable Front Access																	
	Battery Pack Details		(2) 12V 9Ah Sealed Maintenance Free Lead Acid Batteries	(4) 12V 7Ah Sealed Maintenance Free Lead Acid Batteries	(4) 12V 9Ah Sealed Maintenance Free Lead Acid Batteries	(6) 12V 9Ah Sealed Maintenance Free Lead Acid Batteries														
	Replacement Battery Part Number		UPX-RPLBATT-E	UPX-RPLBATT-F	UPX-RPLBATT-C	UPX-RPLBATT-G														
B	Environment																			
	Operating Temperature & Relative Humidity		32 DEG F (0 c) - 104 DEG F (40 c) 0% - 95% Non-condensing																	
	Storage Temperature		5 DEG F (-15 c) - 113 DEG F (45 c)																	
C	Communication																			
	NEXSYS Management Software		Supports Windows® 7/8/10/11 and Windows Server 2008, 2012, 2016, 2019 Windows 2008/2012 Server Core, Hyper-V 2008/2012																	
	Ports		USB, RS232, EPO, Dry Contacts, EXB Auto Detect and RackLink Network Card Option																	
	Control																			
D	Load Shed		Programmable Bank 1 and Bank 2 (standard)																	
	Active On /Off		Manually turn power recepticles on or off using the front panel LCD or the UPS Manager Software.																	
	Scheduling		Fully programmable scheduling available for bank or outlet switching																	
	RackLink Network Card Option																			
	Features		SNMP V3, HTTP, HTTPS, TLS 1.2, SSH, Imbedded Web GUI w/ Dashboard. RADIUS, TCP/IP, Telnet, FTP																	
E	Front LCD Interface																			
	Notification		LED = Normal Mode, AVR Mode, Battery Mode, Internal Fault, Battery Fault																	
	Audible Alarms		On Battery, Low Battery, Battery Disconnected, Fault or Overload																	
Dimensions																				
Width (W) x Height (H) x Depth (D)		17.3" (440mm) x 3.4" (86.5mm) x 17.3" (440mm)				17.3" (440mm) x 3.4" (86.5mm) x 23.6" (600mm)														
Weight																				
Product Weight		32.4 lbs (14.7kg)	45.7 lbs (20.7kg)	46.3 lbs (21.1kg)	67.3 lbs (30.5kg)															
Shipping Weight		38.9 lbs (17.6kg)	52.1 lbs (23.6kg)	52.7 lbs (23.9kg)	75.6 lbs (34.3kg)															
<div><div><div><div><div>PROJECTION: 3rd ANGLE</div><div></div></div><div><div>SCALE = 0.125</div><div>SIZE B SHEET 9 OF 11</div></div></div><div><div>UNLESS OTHERWISE SPECIFIED, ALL DIMENSIONS ARE IN INCHES</div><div>GENERAL TOLERANCES:</div><div>DEC: 1 PLACE +/-0.1 ANGLE: +/-1°</div><div>2 PLACE +/-0.03 FRAC: +/-1/32</div><div>3 PLACE +/-0.010 HOLE SIZE: +/-0.002</div></div><div><table><tr><td>APPROVALS</td><td>DATE</td></tr><tr><td>MODELED LM</td><td>09/21/2023</td></tr><tr><td>DRAWN LM</td><td>09/21/2023</td></tr></table></div><div><div>MIDDLE ATLANTIC</div><div>Always at the Edge of Intelligent</div></div><div><table><tr><td>TITLE</td><td colspan="2">UPX ONLINE SERIES</td></tr><tr><td>DWG NO.</td><td>120-00046_UPX_ONLINE_SERIES</td><td>A</td></tr></table></div></div><div><div>THIS DRAWING CONTAINS TRADE INFORMATION DEEMED TO BE CONFIDENTIAL AND PROPRIETARY PROPERTY OF MIDDLE ATLANTIC PRODUCTS, INC. AND IS TO BE USED ONLY FOR THE PURPOSES FOR WHICH IT IS SUBMITTED AND FURTHER SHALL NOT BE COPIED IN WHOLE OR PART WITHOUT WRITTEN PERMISSION FIRST OBTAINED FROM MIDDLE ATLANTIC PRODUCTS, INC.</div><div>SEP 2023 10:28 AM EST - 037474Z</div></div></div>									APPROVALS	DATE	MODELED LM	09/21/2023	DRAWN LM	09/21/2023	TITLE	UPX ONLINE SERIES		DWG NO.	120-00046_UPX_ONLINE_SERIES	A
APPROVALS	DATE																			
MODELED LM	09/21/2023																			
DRAWN LM	09/21/2023																			
TITLE	UPX ONLINE SERIES																			
DWG NO.	120-00046_UPX_ONLINE_SERIES	A																		

	1	2	3	4	5	6	7	8
A								
B	Certifications							
	Safety Standards		cTUVus Tested to UL 1778 & CAN CSA-C22.2 standards					
	EMI Standards		FCC Class A					
	Environmental		RoHS 3 / REACH Compliant					
	Energy Efficiency		Energy Star 2.0					
C	Features							
	Load Shedding		Yes					
	Site fault detection		Yes					
	Cold Start		Yes					
	Warranty							
	Standard		3 Years Limited (2 Years Battery)					
For warranty information, refer to legrandav.com/policies/warranty_information								
Continue on sheet 11 for NEXSYS OnLine UPS Expandable Runtime Battery Option (EBR)								
E								

<div>PROJECTION: 1" ANGLE</div> <div></div> <div>SCALE = 0.125</div>		<div>UNLESS OTHERWISE SPECIFIED, ALL DIMENSIONS ARE IN INCHES</div> <div>GENERAL TOLERANCES:</div> <div>DEC: 1 PLACE +/-0.1 ANGLE: +/-1°</div> <div>2 PLACE +/-0.03 FRAC: +/-1/32</div> <div>3 PLACE +/-0.010</div> <div>HOLE SIZE: +/-0.002</div>		<div>APPROVALS</div> <div>DATE</div>		<div>MIDDLE ATLANTIC.</div> <div>A brand of Schneider</div>		<div>TITLE</div> <div>UPX ONLINE SERIES</div> <div>- -</div>	
SIZE B		SHEET 10 OF 11		<div>MODELED LM</div> <div>09/21/2023</div>		<div>DRAWN LM</div> <div>09/21/2023</div>		<div>DWG NO.</div> <div>120-00046_UPX_ONLINE_SERIES</div> <div>A</div>	
<div>THIS DRAWING CONTAINS TRADE INFORMATION DEEMED TO BE CONFIDENTIAL AND PROPRIETARY PROPERTY OF MIDDLE ATLANTIC PRODUCTS, INC. AND IS TO BE USED ONLY FOR THE PURPOSES FOR WHICH IT IS SUBMITTED AND FURTHER SHALL NOT BE COPIED IN WHOLE OR PART WITHOUT WRITTEN PERMISSION FIRST OBTAINED FROM MIDDLE ATLANTIC PRODUCTS, INC.</div>									

[illegible]