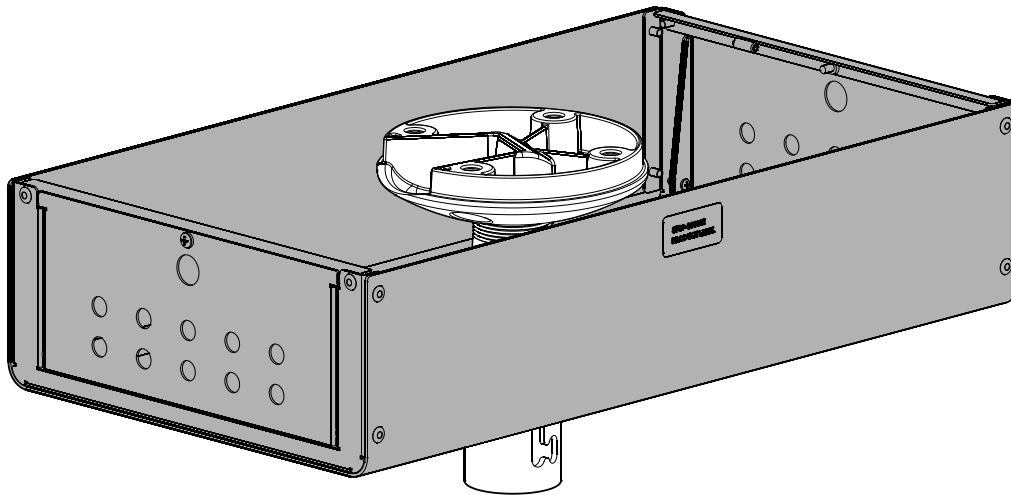

INSTALLATION INSTRUCTIONS



Below Ceiling Enclosure

DISCLAIMER

Legrand | AV and its affiliated corporations and subsidiaries (collectively "Legrand | AV"), intend to make this manual accurate and complete. However, Legrand | AV makes no claim that the information contained herein covers all details, conditions or variations, nor does it provide for every possible contingency in connection with the installation or use of this product. The information contained in this document is subject to change without notice or obligation of any kind. Legrand | AV makes no representation of warranty, expressed or implied, regarding the information contained herein. Legrand | AV assumes no responsibility for accuracy, completeness or sufficiency of the information contained in this document.

Chief® is a registered trademark of Legrand | AV Inc.



IMPORTANT WARNINGS AND CAUTIONS!



WARNING: A WARNING alerts you to the possibility of serious injury or death if you do not follow the instructions.



CAUTION: A CAUTION alerts you to the possibility of damage or destruction of equipment if you do not follow the corresponding instructions.



WARNING: Failure to read, thoroughly understand, and follow all instructions can result in serious personal injury, damage to equipment, or voiding of factory warranty! It is the installer's responsibility to make sure all components are properly assembled and installed using the instructions provided.

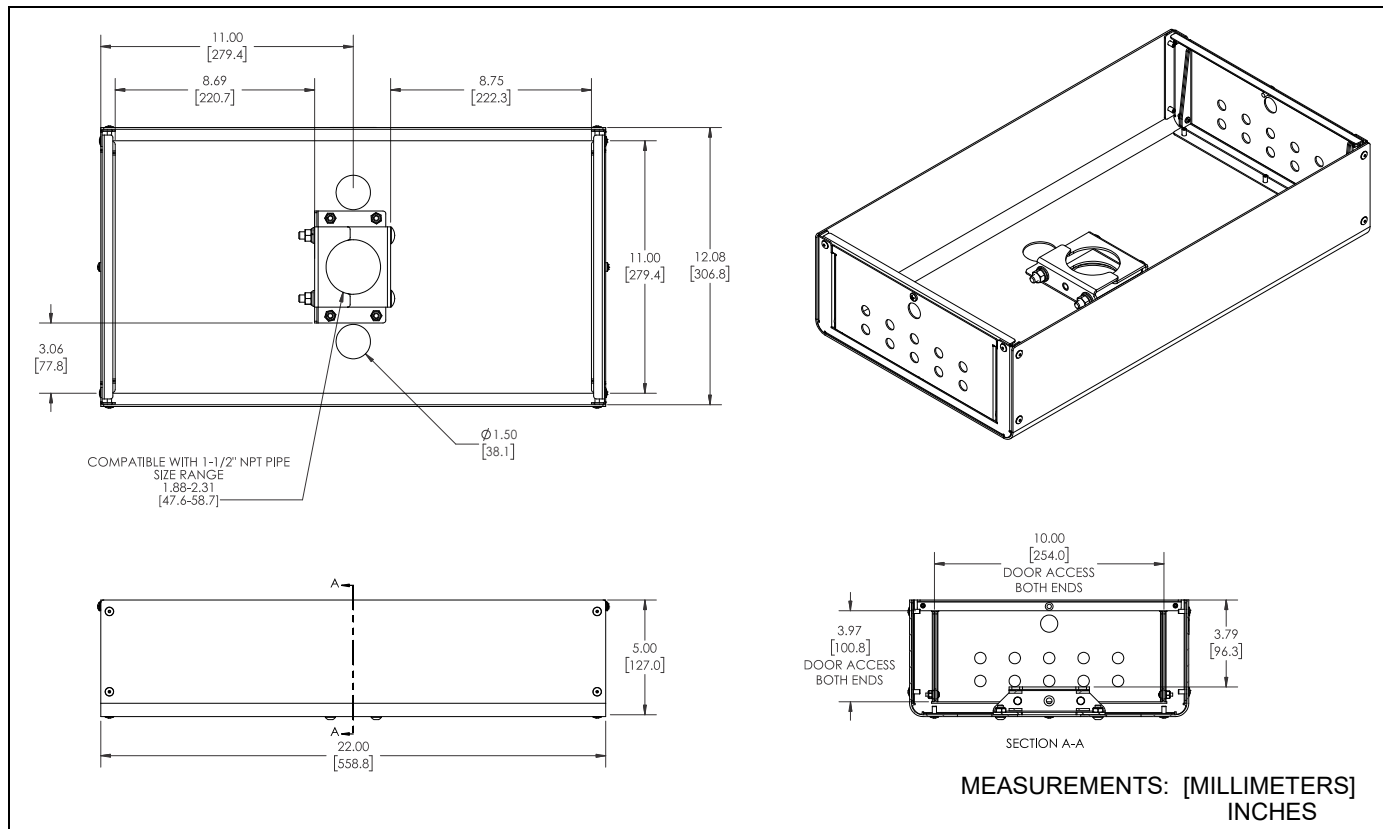


WARNING: Failure to provide adequate structural strength for this component can result in serious personal injury or damage to equipment! It is the installer's responsibility to make sure the structure to which this component is attached can support five times the combined weight of all equipment. Reinforce the structure as required before installing the component.

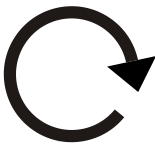

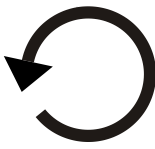




WARNING: Exceeding the weight capacity can result in serious personal injury or damage to equipment! It is the installer's responsibility to make sure the combined weight of all components located in the CMA480 does not exceed 25 lbs (11.3 kg).

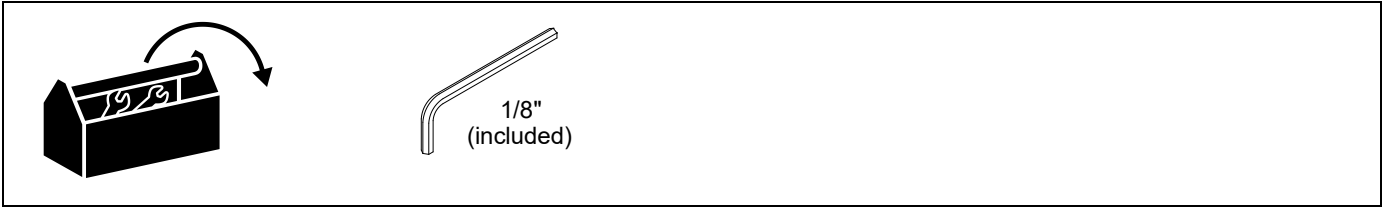
DIMENSIONS



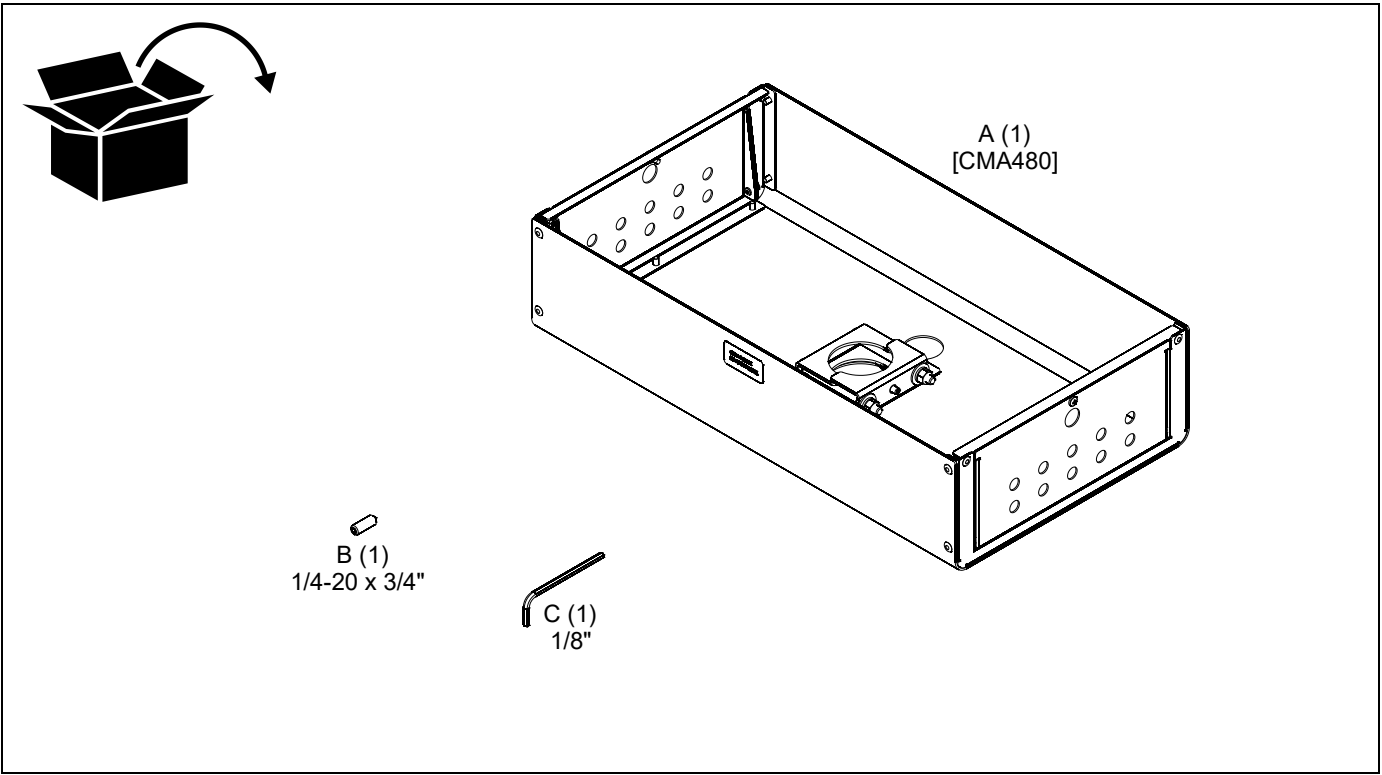
LEGEND

	Tighten Fastener Apretar elemento de fijación Befestigungsteil festziehen Apertar fixador Serrare il fissaggio Bevestiging vastdraaien Serrez les fixations		By Hand A mano Von Hand Com a mão A mano Met de hand À la main
	Loosen Fastener Aflojar elemento de fijación Befestigungsteil lösen Desapertar fixador Allentare il fissaggio Bevestiging losdraaien Desserrez les fixations		Hex-Head Wrench Llave de cabeza hexagonal Sechskantschlüssel Chave de cabeça sextavada Chiave esagonale Zeskantsleutel Clé à tête hexagonale
	Open-Ended Wrench Llave de boca Gabelschlüssel Chave de bocas Chiave a punte aperte Steeksleutel Clé à fourche		

TOOLS REQUIRED FOR INSTALLATION



PARTS



INSTALLATION



WARNING: Failure to provide adequate structural strength for this component can result in serious personal injury or damage to equipment! It is the installer's responsibility to make sure the structure to which this component is attached can support five times the combined weight of all equipment. Reinforce the structure as required before installing the component.

1. Install ceiling plate following instructions included with the ceiling plate.

NOTE: The ceiling plate may be an above-ceiling model (such as the CMA440), or a standard below-ceiling plate (such as the CMS115).

2. Install extension column following instructions included with the extension column.
3. Remove one screw from door at each end of CMA480. (See Figure 1)

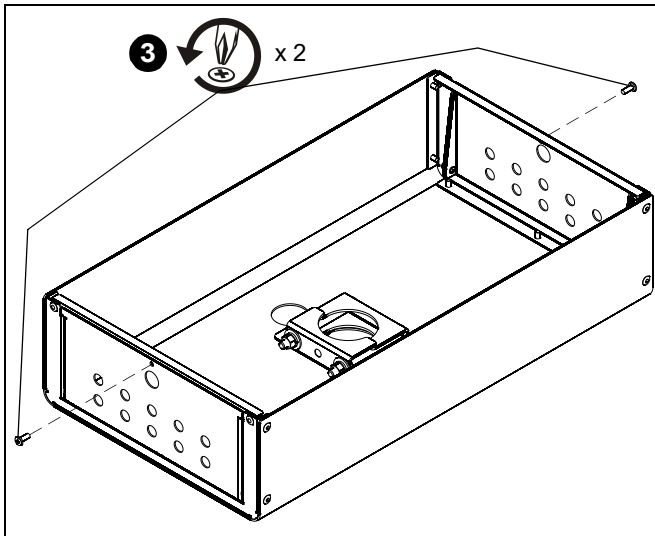


Figure 1

4. Open doors of CMA480. (See Figure 2)

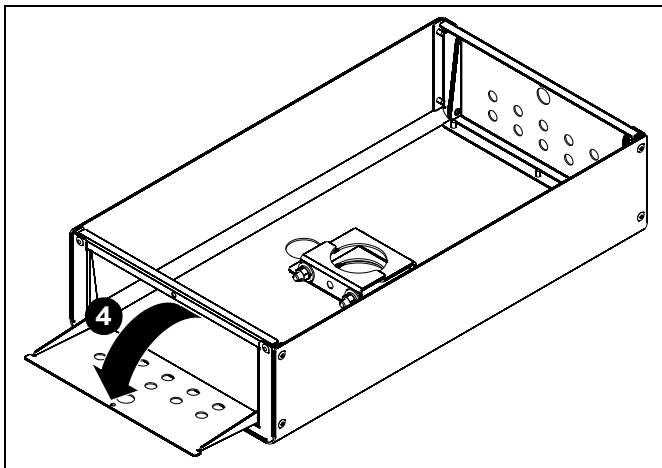


Figure 2

5. Loosen carriage bolts and open clamp bracket. (See Figure 3)

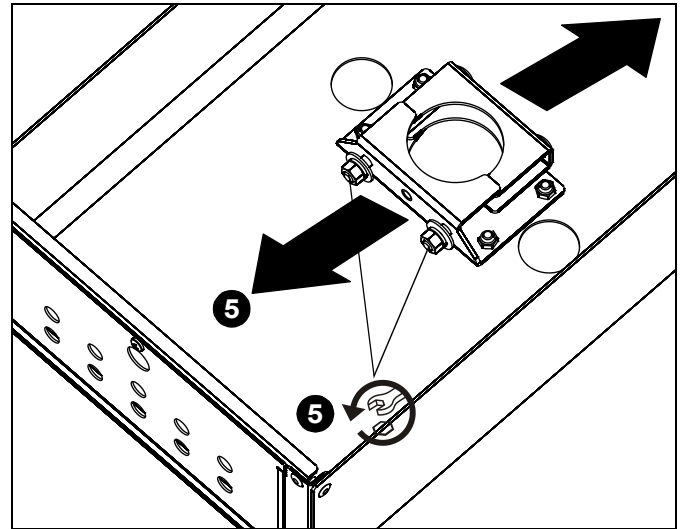


Figure 3

6. Lift CMA480 up and onto extension column, and place CMA480 flush with the ceiling.
7. Tighten clamp bracket around column, and tighten carriage bolts. (See Figure 4)

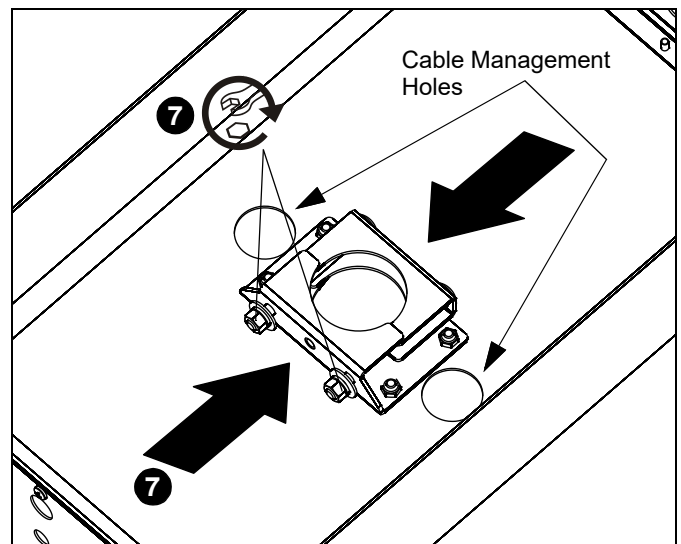


Figure 4

8. Insert one 1/4-20 x 3/4" set screw (B) into CMA480 enclosure clamp, and tighten against extension column. (See Figure 5)

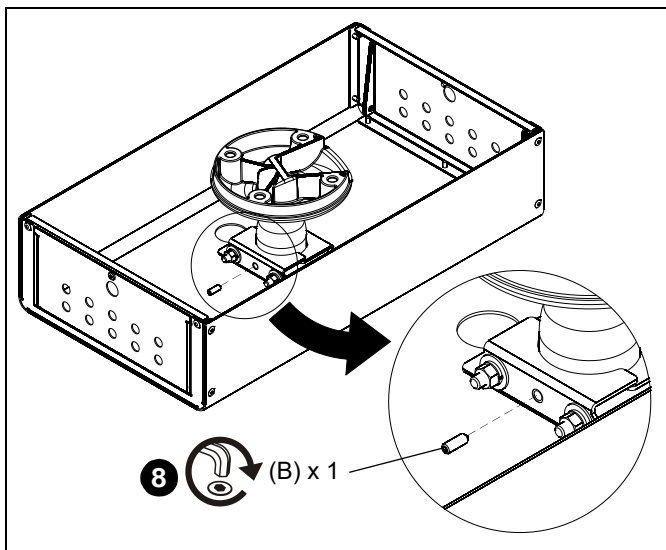


Figure 5

9. Power cords and cables may be run through the cable management holes. (See Figure 4)
10. Close CMA480 door(s) and secure with screw(s) removed in Step 3. (See Figure 6)

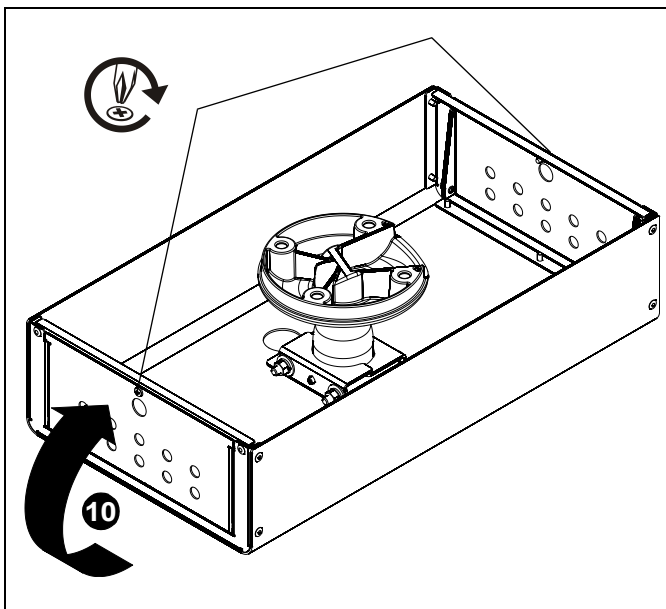


Figure 6

CHIEF®

A brand of **legrand®**

8800-003380 Rev00
©2023 Legrand | AV
www.legrandav.com
01/2023

- | | |
|--------------------------|--|
| USA/International | A 6436 City West Parkway, Eden Prairie, MN 55344
P 800.582.6480 / 952.225.6000
F 877.894.6918 / 952.894.6918 |
| Europe | A Franklinstraat 14, 6003 DK Weert, Netherlands
P +31 (0) 495 580 852
F +31 (0) 495 580 845 |
| Asia Pacific | A Office No. 918 on 9/F, Shatin Galleria
18-24 Shan Mei Street
Fotan, Shatin, Hong Kong
P 852 2145 4099
F 852 2145 4477 |

